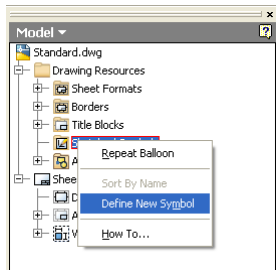

Autodesk Products Tip & Tricks

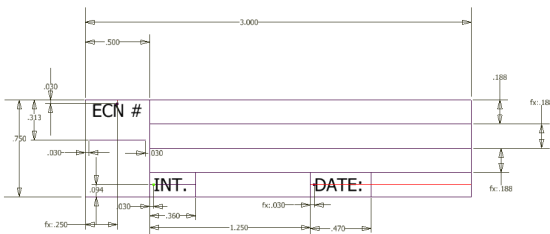
Product: Autodesk Inventor
Topic: Sketch Symbols the Equivalent of AutoCAD Blocks
Written by: Craig L. Bashor, Technical Engineer
Date: January 1, 2009

Have you ever wondered while in an Inventor IDW/DWG, “how do I create a block?” With the [DWG Trueconnect](#) you can copy and paste a block out of AutoCAD and into Inventor. Doing a copy and paste from AutoCAD there is some limited functionality, for example having a leader attached to the AutoCAD block. In this tip, I will show you how to create a Sketch Symbol and use it in an IDW/DWG.

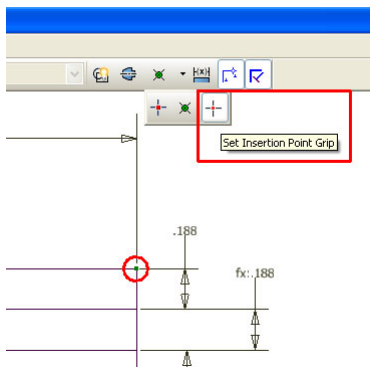
1. With an IDW/DWG open, expand the Drawing Resources, right click on the Sketch Symbols folder and select Define a Symbol.



2. Now begin sketching the geometry you will use in the symbol. Use dimensions and constraints to fully constrain the geometry.

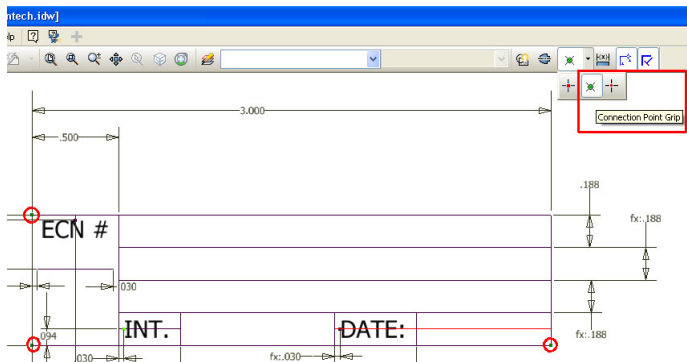


3. Select a point anywhere on the geometry and then select the Set the Insertion Point Grip command for the insertion point.

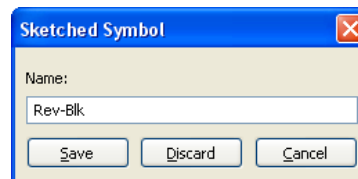
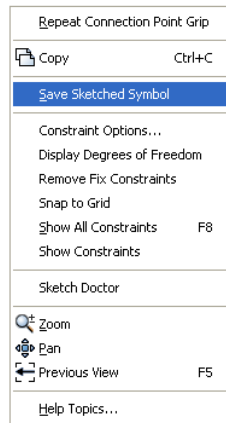


Autodesk Products Tip & Tricks

- Now you may want to select the other corners and select the Connection Point Grip command so that the symbol can snap to the other symbols, the title block and border.



- Next, right click anywhere in the screen and select Save Sketch Symbol. Then in the Sketch Symbol dialog give your new symbol a name.



- Now locate your new symbol in the browser under the Sketch Symbols folder, right click on it and select either Symbols... or the Insert command to use it in your drawing.

