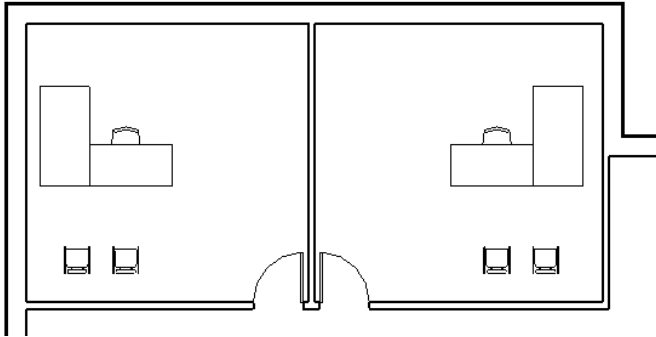


Autodesk Products Tip & Tricks

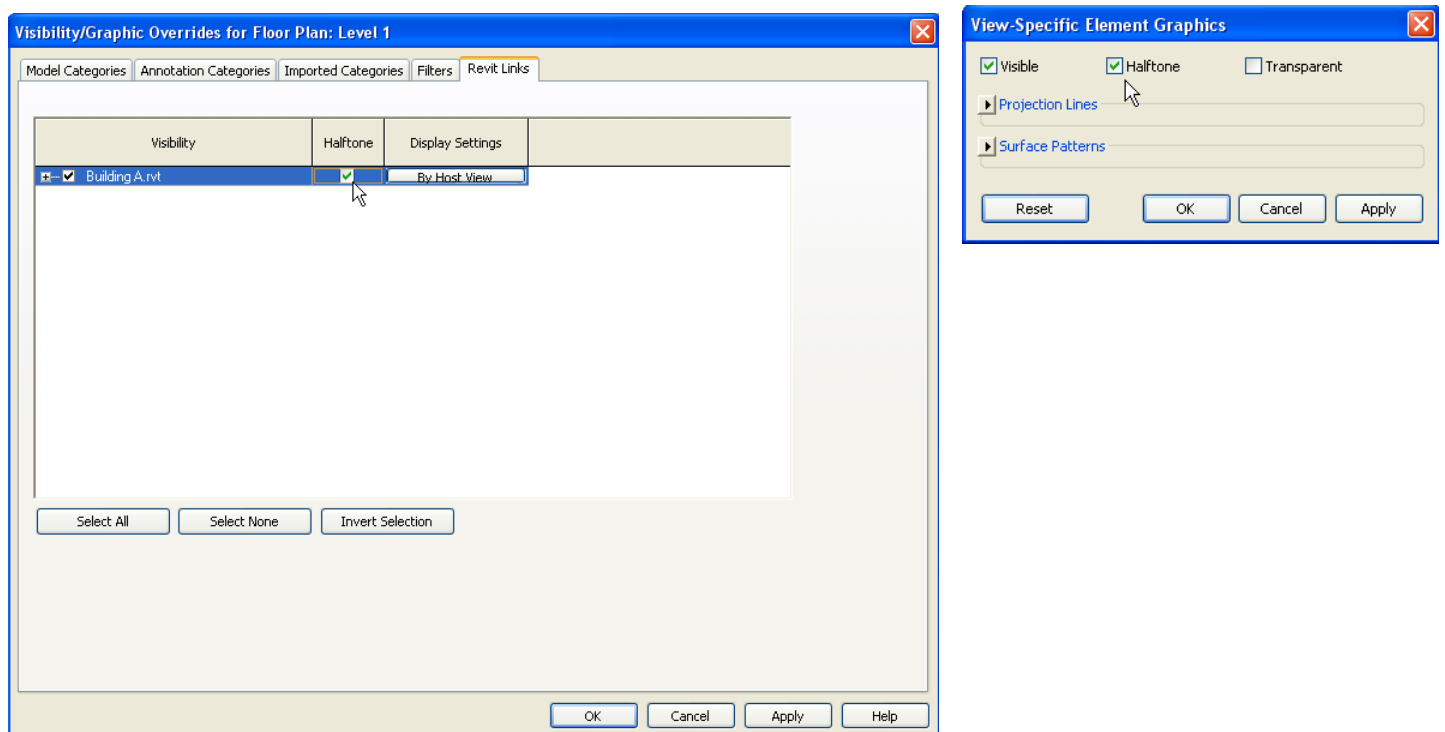
Product: Revit Architecture 2010
Topic: Halftone Controls
Written by: Kristen Fierro, Senior Applications Engineer
Date: June 29, 2009

We now have control over what half tone means. After an object, category, or link is set to halftone, by changing the Visibility Graphics we can control how dark or light they appear.

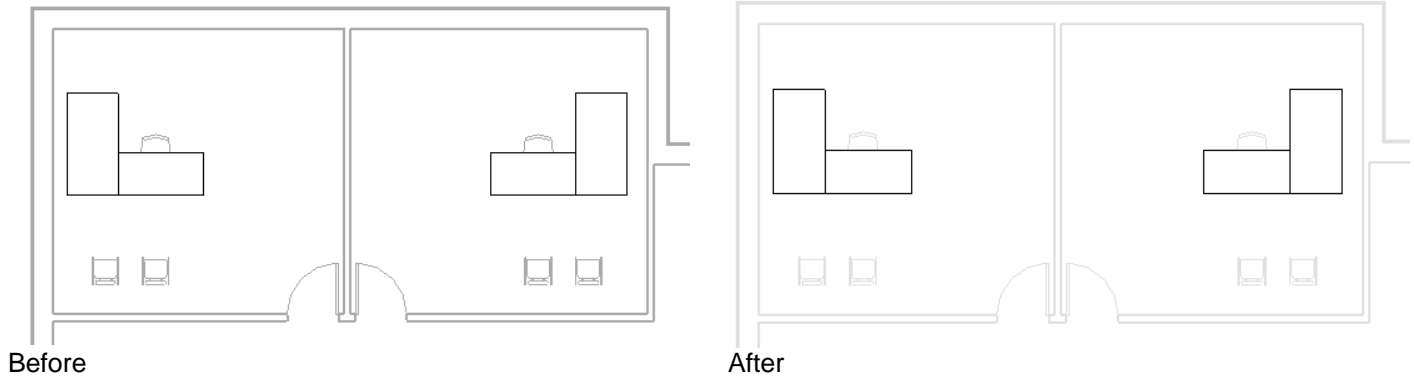
Let us take a look at the following view:



We will set the Visibility Graphics to halftone, and override the visibility of the chairs.



Autodesk Products Tip & Tricks



We can then go to the Manage tab, select halftone/underlay and modify the brightness.

