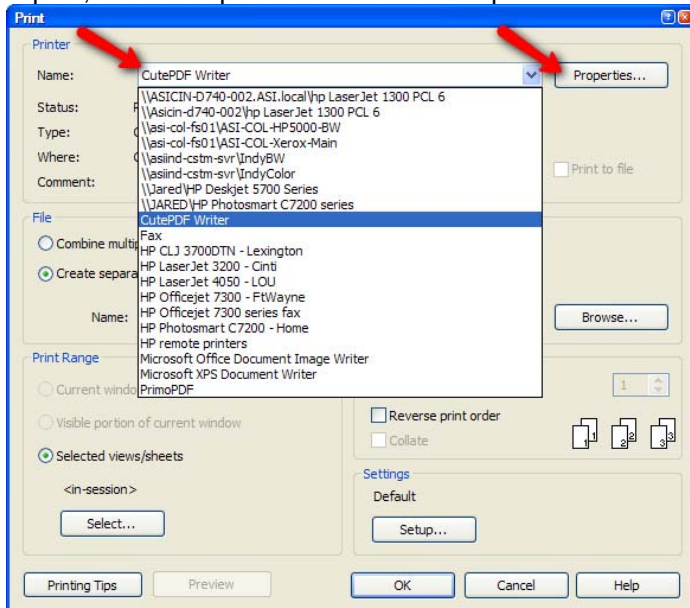


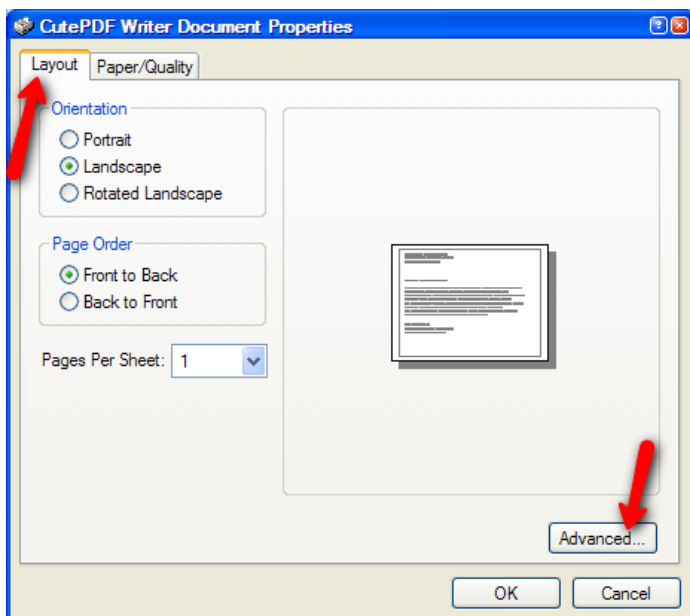
Autodesk Products Tip & Tricks

Product: Revit Architecture
Topic: Custom Plot Sizes
Written by: Brenda Thomas, BSD Technical Engineer
Date: June 30, 2009

To look at and edit the plotter settings, go to File>Print menu to open the print dialog box. Once the dialog is 'Open', select the plotter name in the Drop-down menu and then select Properties.



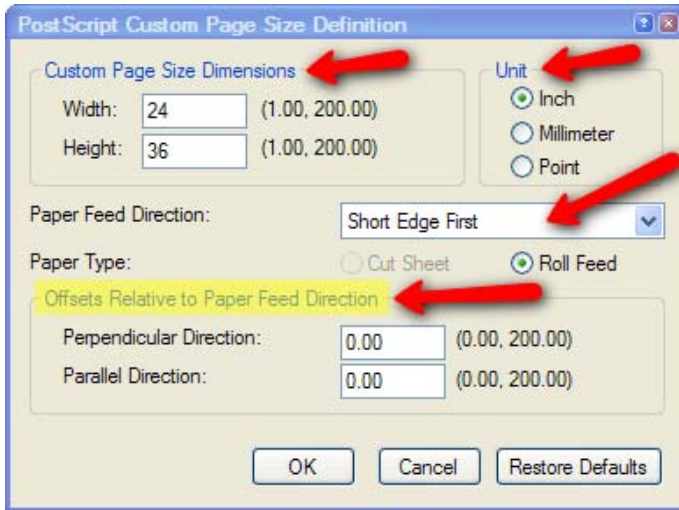
In the Plotter Properties Dialog box, select the Layout Tab along the top and the 'Advanced' button in the lower right corner.



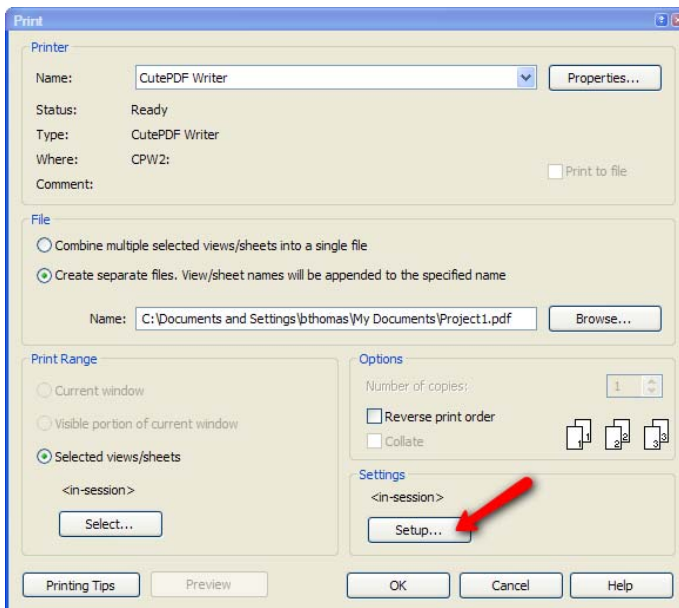
Autodesk Products Tip & Tricks

In the Advanced Options dialog box, Confirm that all of the settings for the plotter – including page size, print quality, and scaling, are all accurately set.

If the page size is still incorrect, try creating a custom page size by selecting custom in the page sizes dialog box and setting the custom size information in the Definition dialog box.

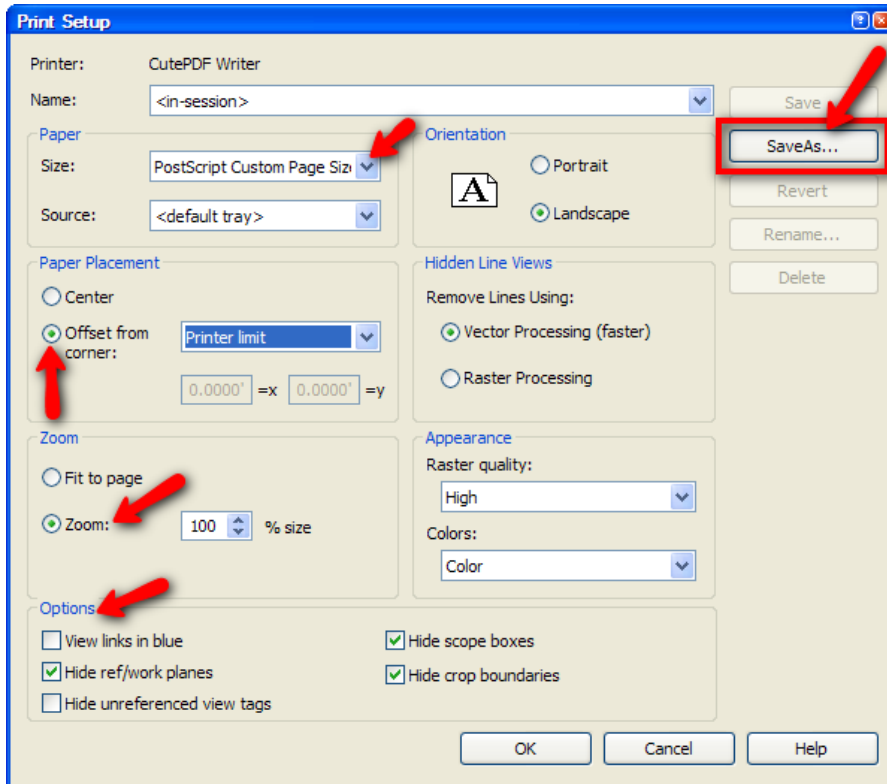


Be sure to edit the Page Size Dimensions, Units, Paper Feed Direction (Short or Long edge first), and the Offsets Relative to the paper feed direction (if applicable). After updating the custom settings, click 'OK' several times till you are back to the first dialog box for the print settings. In the print settings dialog, select Setup in the Settings.



In the Print Setup, select the custom paper size, Determine the Paper placement, select the Zoom to 100% (not scaled to fit), set your options for what prints, determine the page orientation and then finally, select 'Save As' and name this print setup so it is saved in the project and can be selected again in the future.

Autodesk Products Tip & Tricks



Finally, select 'OK' and then 'OK' in the Print Dialog.