

Autodesk Products Tip & Tricks

Product: Autodesk Vault 2009
Topic: Mapping Autoloader to a Folder Other Than “Designs”
Written by: Mark Beman, ASI Support Specialist
Date: August 29, 2008

When using Autoloader, it seems we’re forced to use the default folder name of “Designs” when adding our files to the Vault. Not true, this can be changed by editing a small text file hidden in the root of the Vault if we’ve used Autoloader already. If Autoloader hasn’t been used yet the file can be created in notepad.

The first step if Autoloader has been used to Vault files is to make the .XML file visible by checking “Show hidden files” in the Vault Explorer Options. (Figure 1)

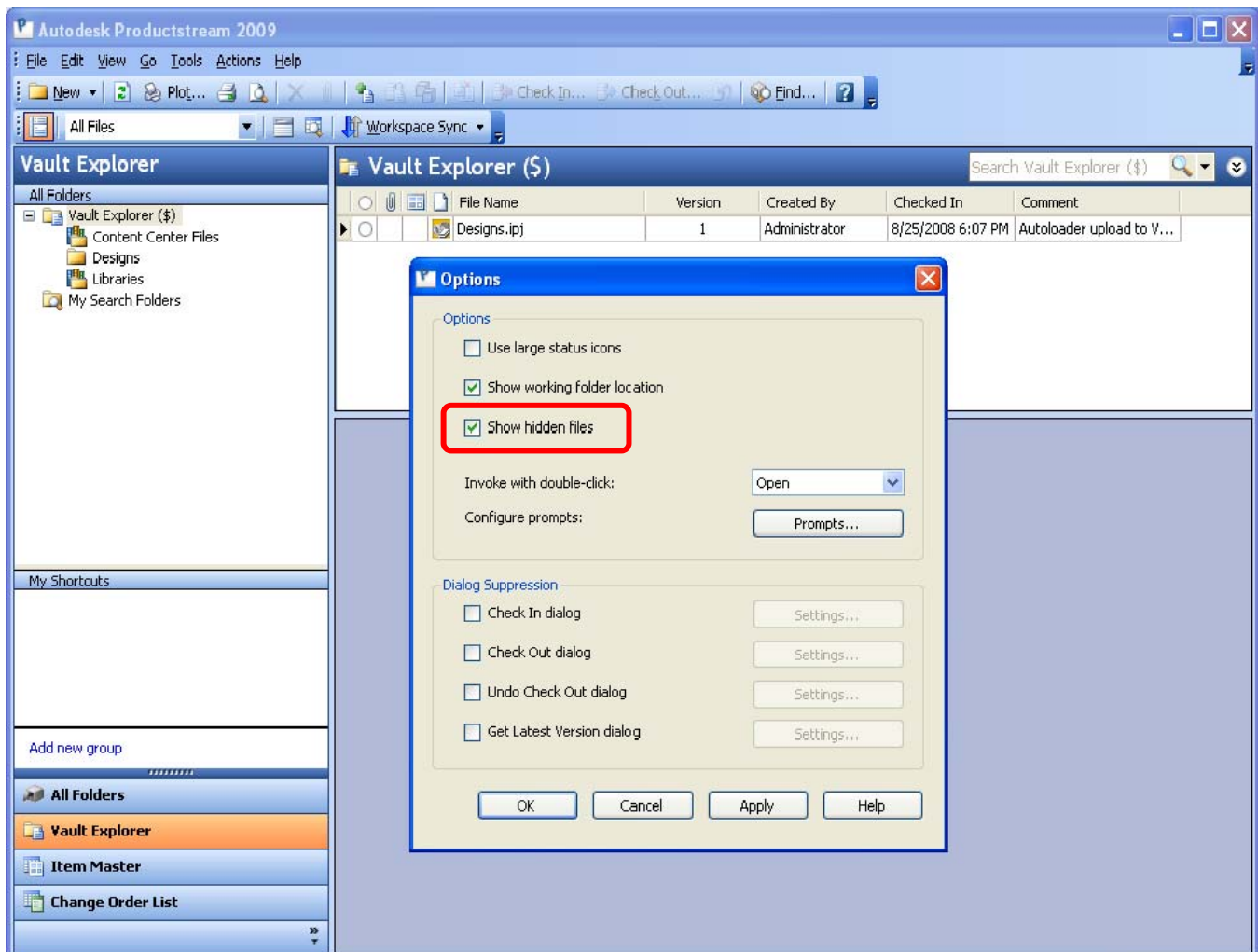


Figure 1

Autodesk Products Tip & Tricks

Next, check out the BUU.xml file and open it with notepad. (Figures 2 & 3)

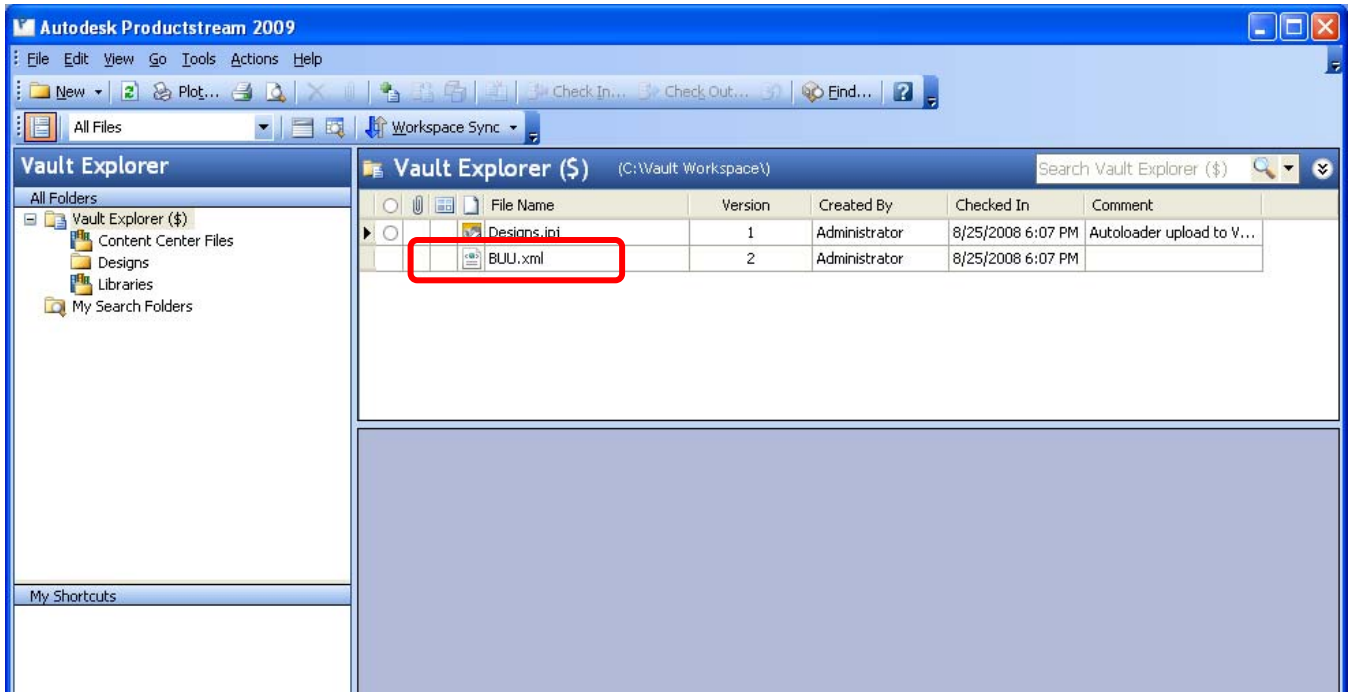


Figure 2

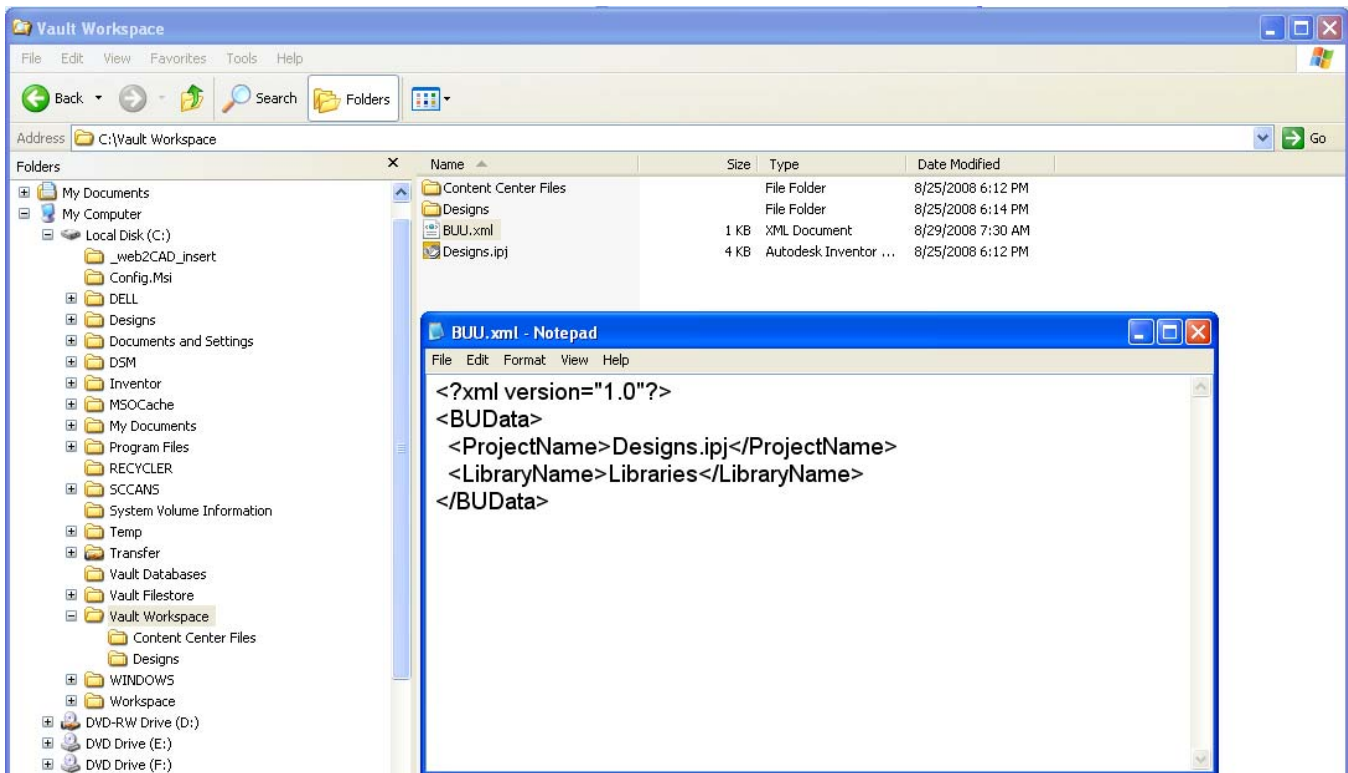


Figure 3

Autodesk Products Tip & Tricks

If the file doesn't exist, create a new text file in notepad, copy and paste the following text, and then replace "Designs" with the name of your project folder, and "Libraries" with the name of your library as in Figure 4.

```
<?xml version="1.0">  
<BUData>  
<ProjectName>Designs.ipj</ProjectName>  
<LibraryName>Libraries</LibraryName>  
</BUData>
```

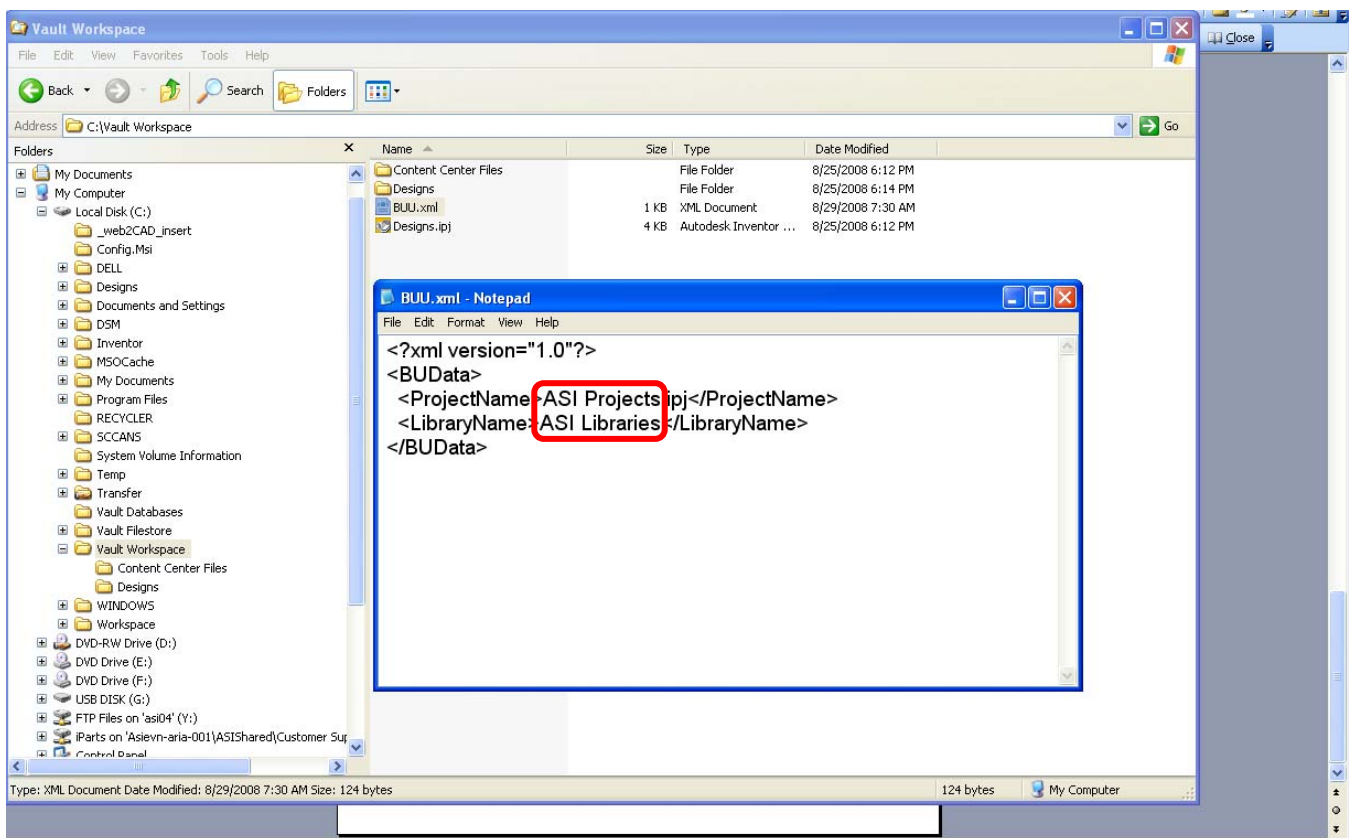


Figure 4

Save the file and check it back into the Vault; or add it to the Vault if it's a new file.

Autodesk Products Tip & Tricks

Your project can now be mapped to your folders in Vault. (Figure 5)

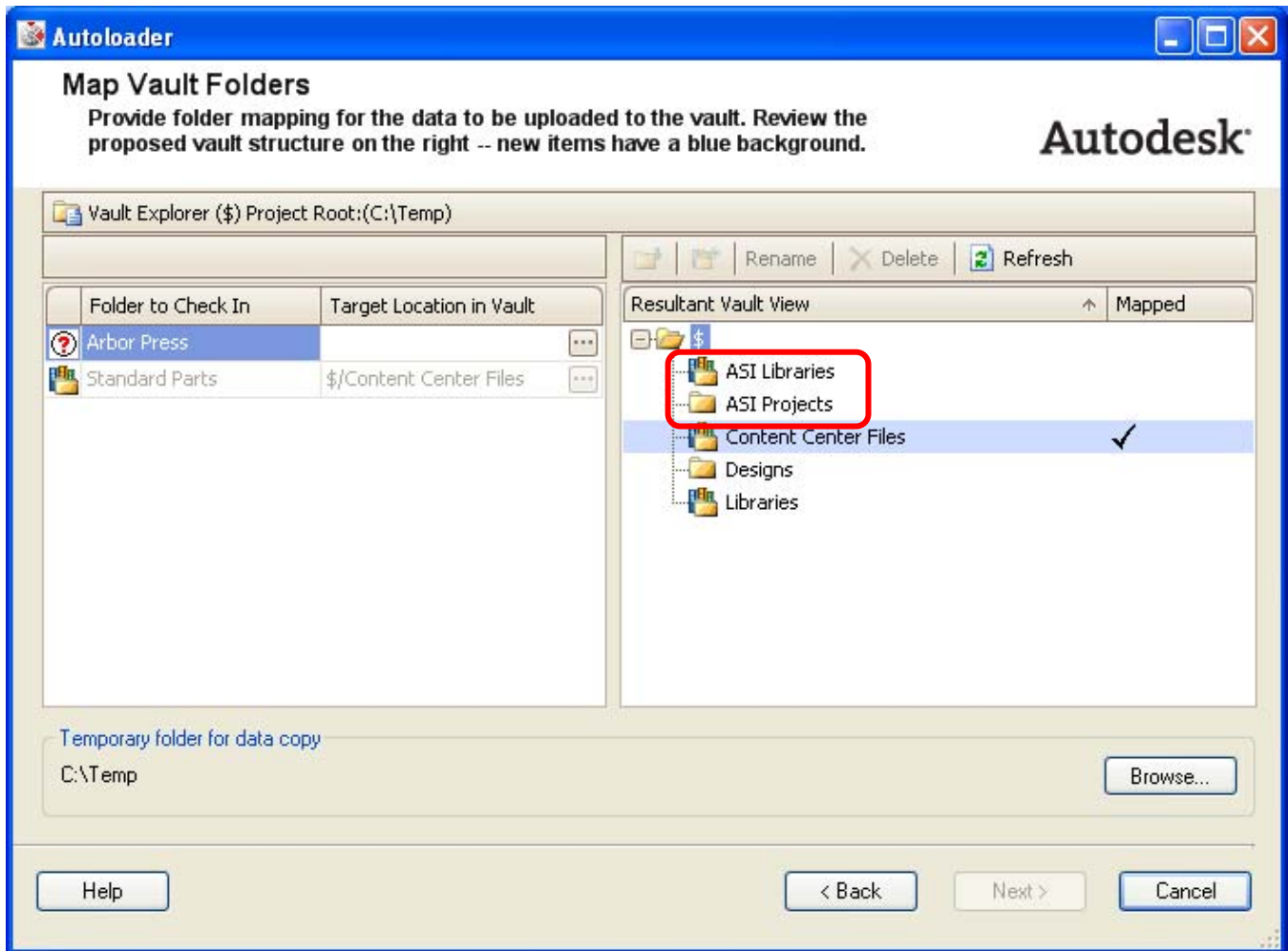


Figure 5