

Autodesk Products Tip & Tricks

Product: AutoCAD 2009
Topic: Accelerate Erase Command
Written by: Justin Chartier, Manufacturing Technical Engineer
Date: November 26, 2008

Hello and welcome to our Tips & Tricks session.

The erase command is a widely used command when using AutoCAD. It allows you to delete or remove your selection.

In this Session, I will show you how to speed up your erase command by eliminating a confirmation step.

To access your Erase Command's Property Macros:
From the Tools Tab → Customize → Interface
Or type **cui** at the command prompt.

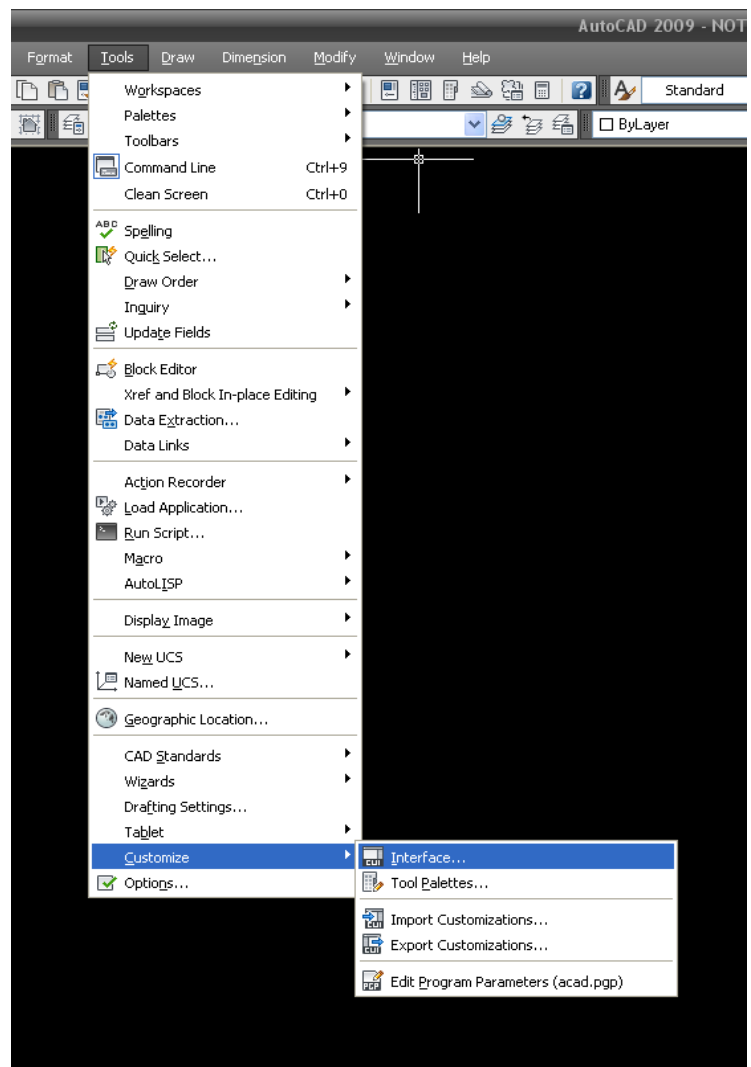


Figure 1

Autodesk Products Tip & Tricks

Next under the Customization tab → in the “Customization in all CUI Files” Pane → select Toolbars → select Modify → select erase to display the Macro

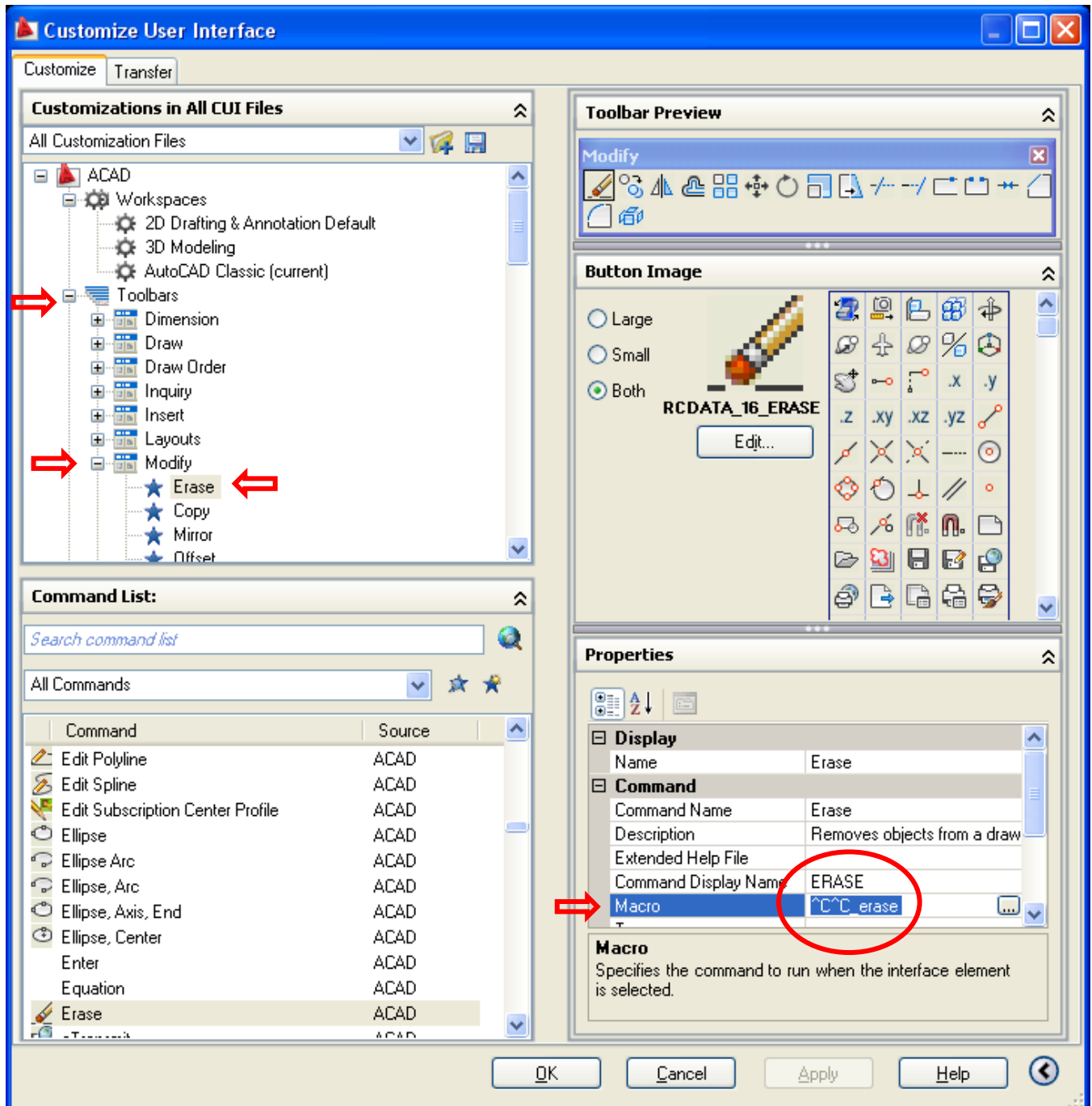


Figure 2

Autodesk Products Tip & Tricks

Now you can see the current Erase Macro which reads **^C^C_erase**.

- Manually add an asterisk (*) before the first carrot.
- Next skip a space after the word erase, then type the word **single**.
- So the new Erase Macro should read ***^C^C_erase single**

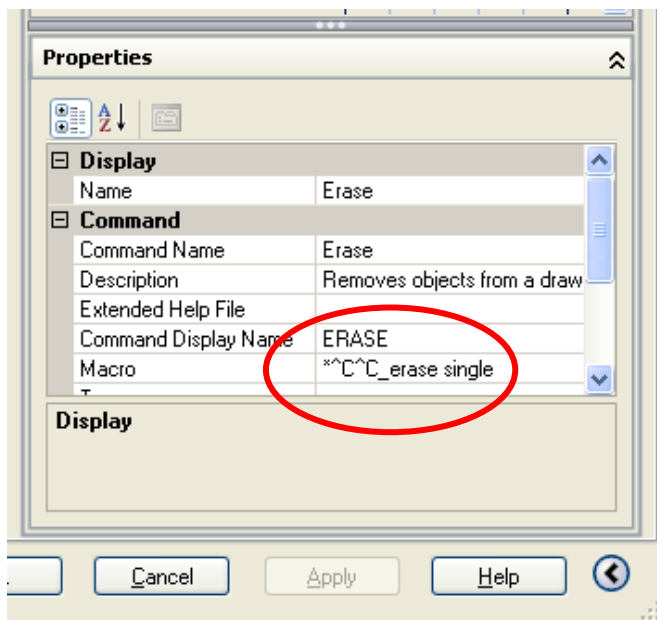


Figure 3

This modification will reduce the time it takes to delete objects by eliminating the additional confirmation step with your RMB. Once you click on the object, it will erase without any additional steps, allowing you to be more efficient.

Thank You for viewing this session of Tips & Tricks.