

Autodesk Products Tip & Tricks

Product: NavisWorks Manage 2009
Topic: Selection and Search Sets in NavisWorks
Written by: Nick Bower, Assoc. AIA BSD Technical Engineer
Date: November 26, 2008

Selection and Search Sets are a critical tool in NavisWorks. They can be used for visualization purposes, clash detection, time lines and walkthroughs. Selection Sets allow you to highlight objects from either the Selection Tree or the Find Items function and save them into groups.

The following is an example of saving Selection Sets

On the Selection Tree, you have the ability to select objects in multiple ways. In this case, we will select objects by their Revit Name. After a series of objects have been selected, right click in the Selection Sets menu (Figure 1).

Choose the option of Save Current Selection. This will give you the opportunity to give the Selection Set a unique name (Figure 2).

You will notice that the objects saved in the Selection Set are highlighted (Figure 3). We can then use the Unselected Hidden to hide all the objects except the ones contained in the Selection Set (Figure 4).

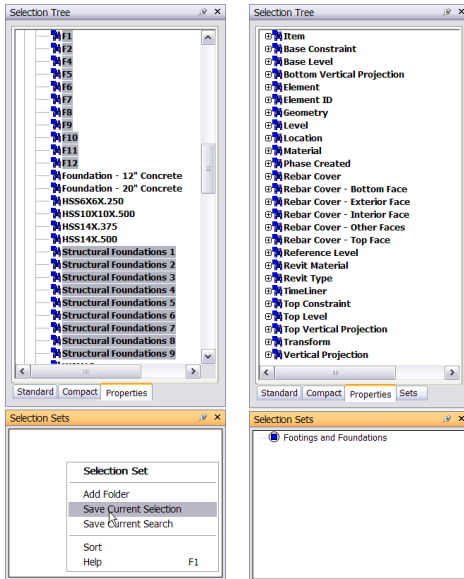


Figure 1

Figure 2

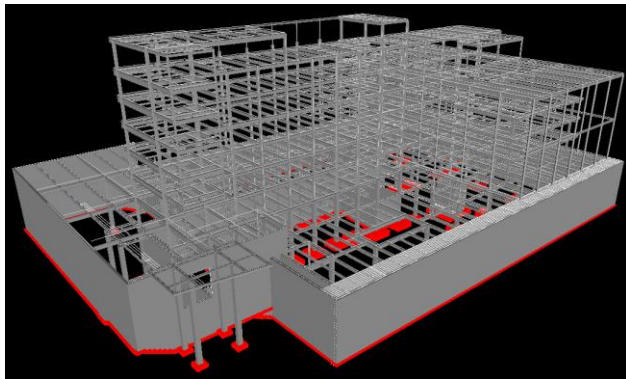


Figure 3

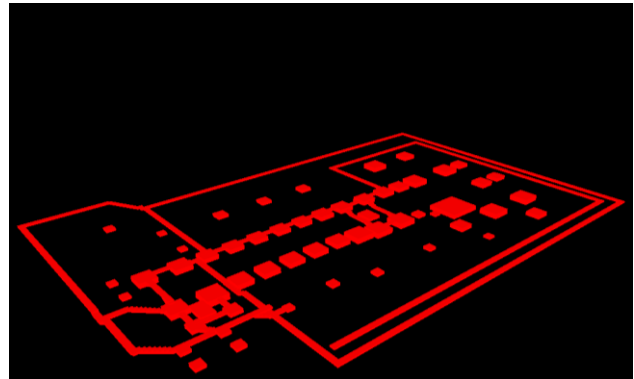


Figure 4

Autodesk Products Tip & Tricks

Much like Selection Sets, Search Sets allow an object or group of objects to be selected and saved. One great thing you can do with Search Sets is Export them out to an .xml file. This will give you the ability to import the Search Properties into a different NavisWorks file. For Example:

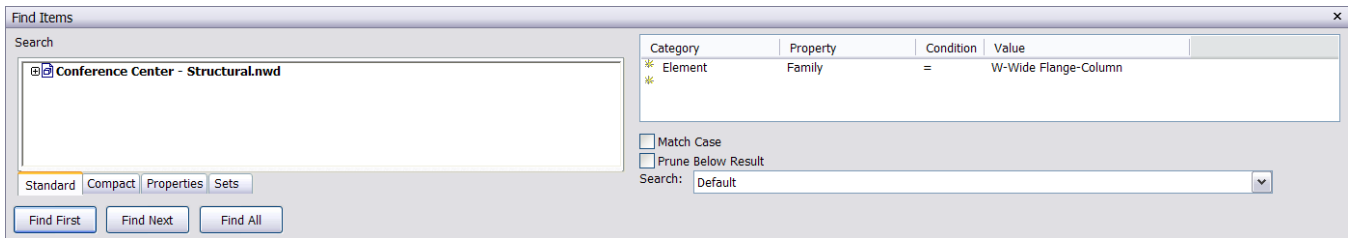


Figure 5

You can use the Find Items tool to search for Revit objects whose property is W-Wide Flange-Column (Figure 5). After all the objects that fit that criterion are found, you can save the Search Set in the Selection Sets menu (Figure 6).

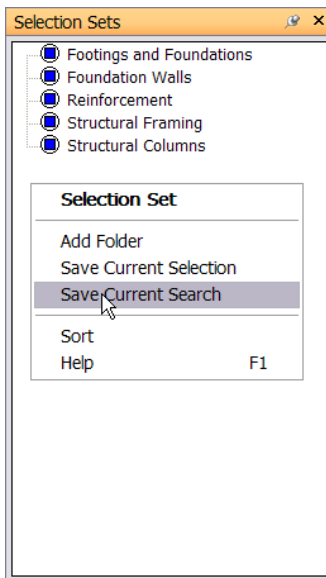


Figure 6

After the Search Set is saved, it can be exported to an .xml file. To export the Search Set go to File > Export > Search Sets XML (Figure 7).

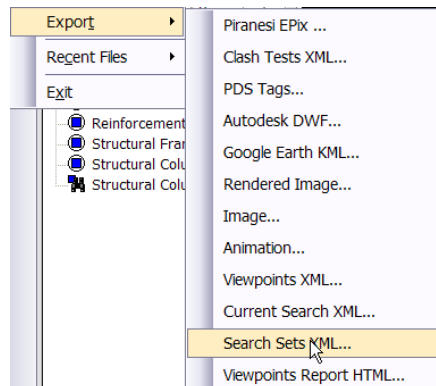


Figure 7

Open a different NavisWorks file and import the Search Set file (Figure 8) that was just saved. See that the search Set appears in the Selection Sets menu (Figure 9).

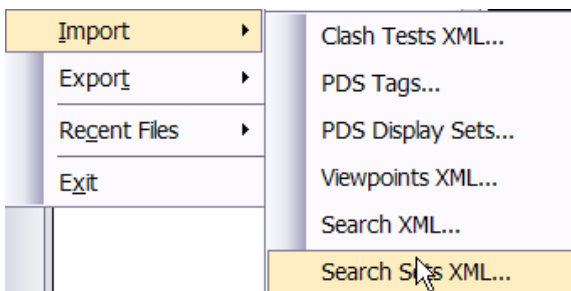


Figure 8

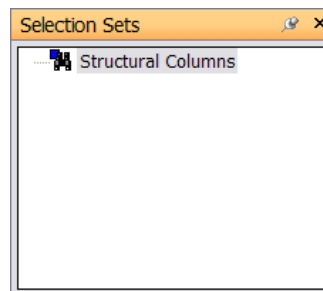


Figure 9

Autodesk Products Tip & Tricks

At this point, you can select the Search Set and hide all but selected to show just the structural columns (Figures 10 & 11).

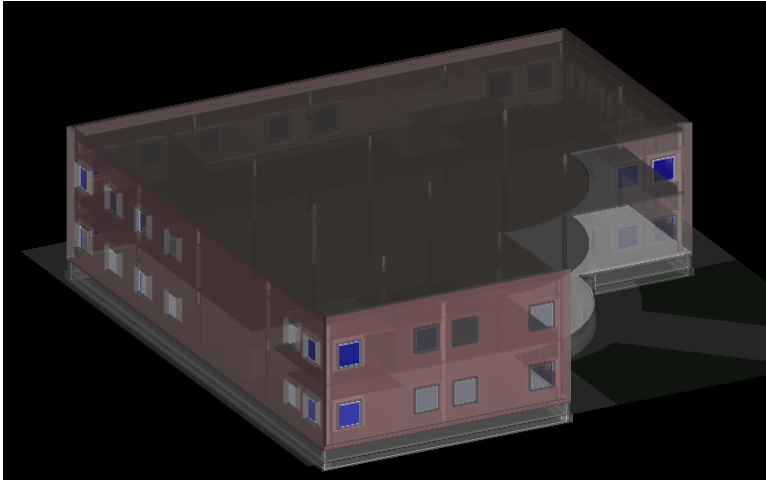


Figure 10

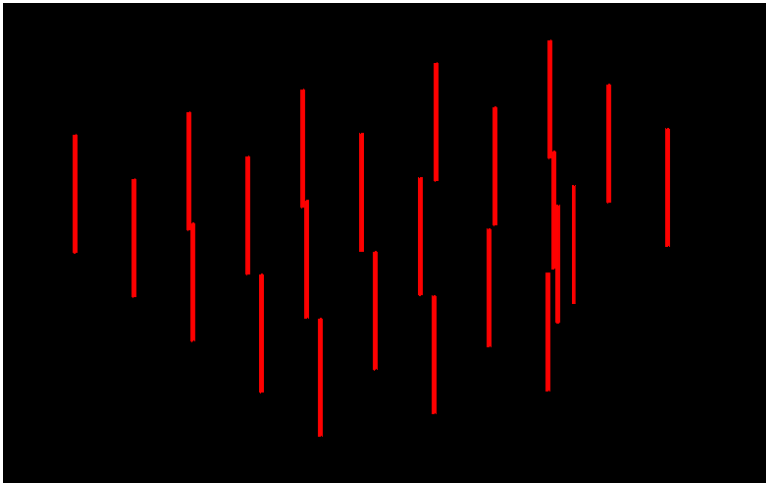


Figure 11