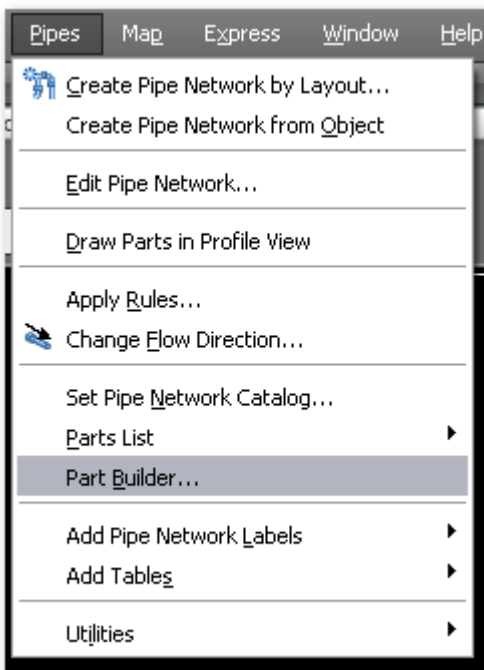

Autodesk Products Tip & Tricks

Product: AutoCAD Civil 3D 2009
Topic: Creating a new Part Family for HDPE pipe.
Written by: Scott Underwood, PE, Technical Engineer
Date: December 17, 2008

Step 1:

Launch Part Builder.

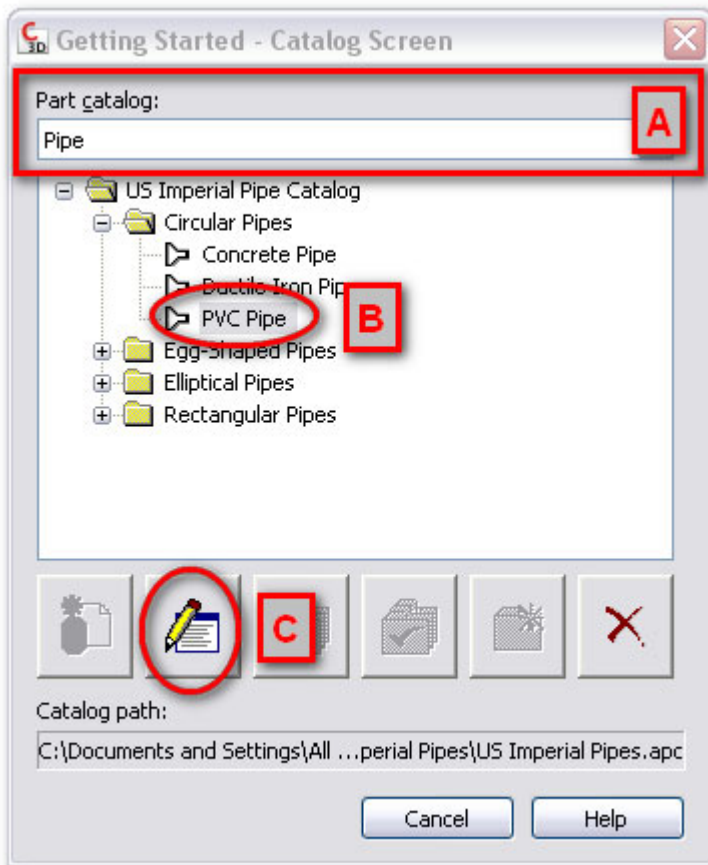


Select Part Builder from the Pipes Menu or Type PARTBUILDER <enter> at the command prompt.

Autodesk Products Tip & Tricks

Step 2:

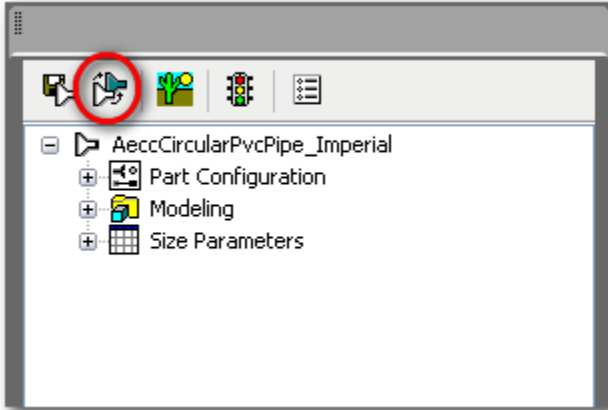
- A: Set the Part Catalog drop down to Pipe
- B. Select the Part Family you want to copy.
- C. Click the edit Button.



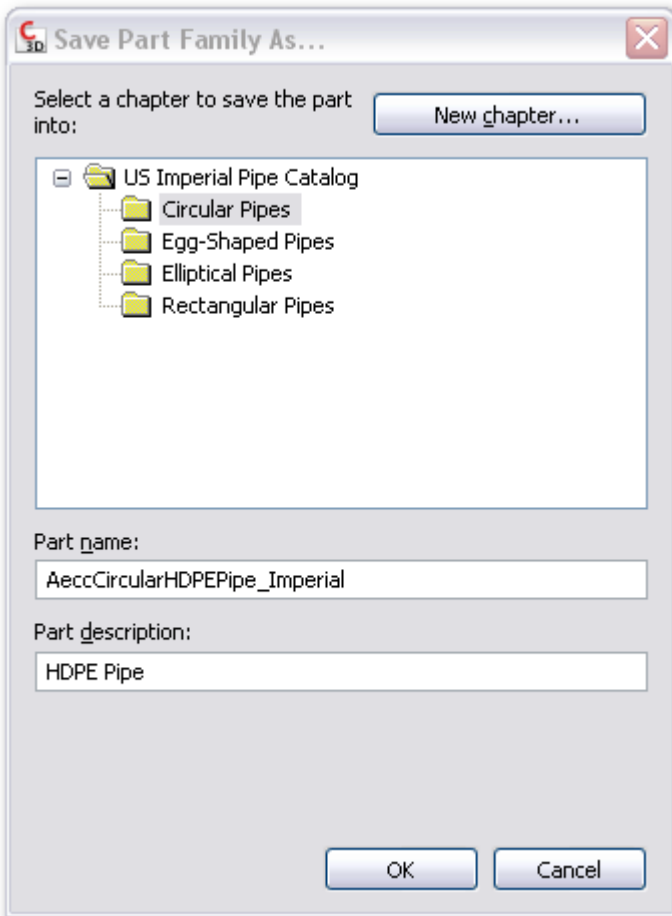
Step 3:

Click the Save As part family button as shown.

Autodesk Products Tip & Tricks



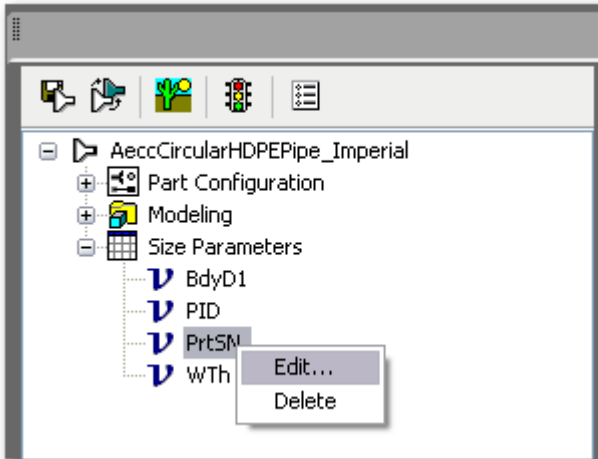
Save as follows for HDPE pipe.



Step 4:

In the Content Builder Interface Left Click to select the PrtSN Size Parameter, then right click and select Edit.

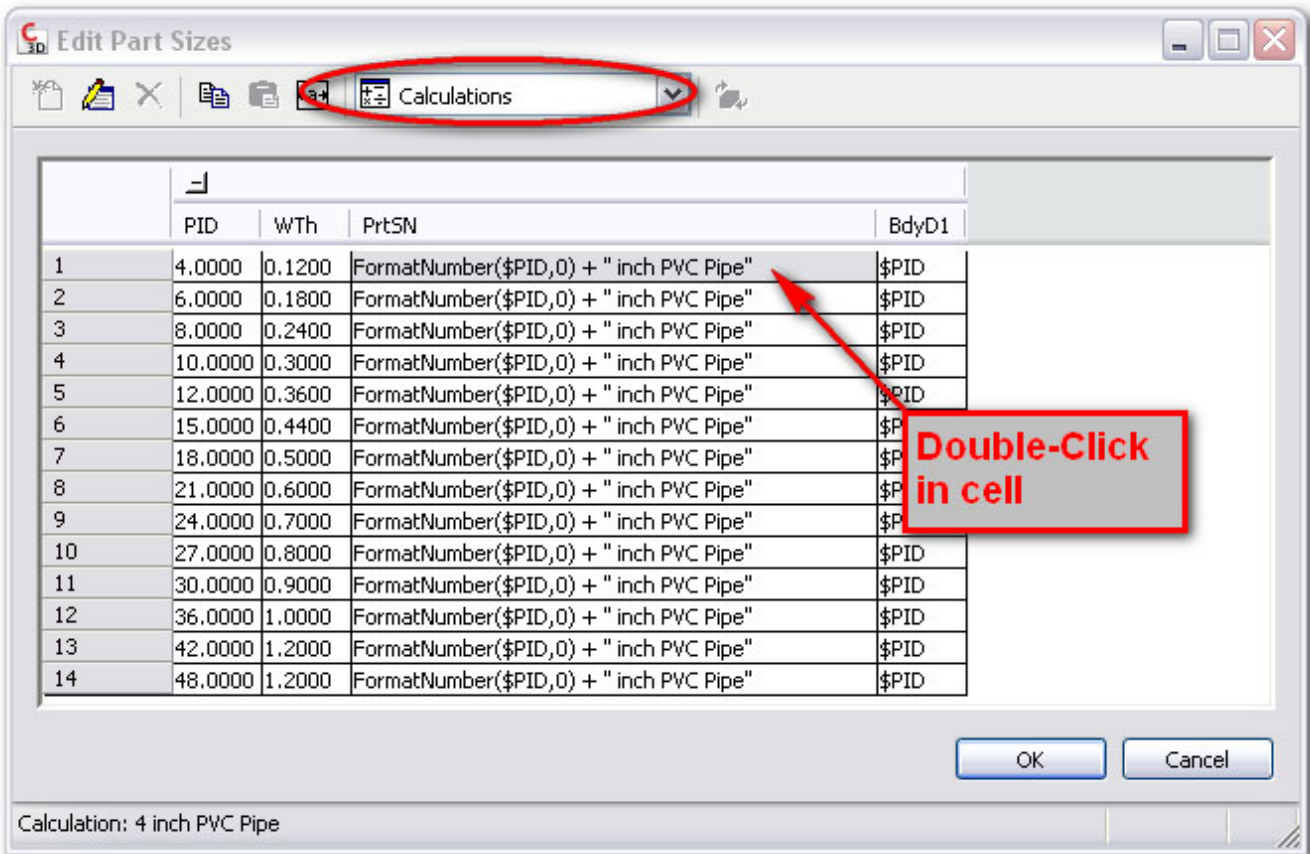
Autodesk Products Tip & Tricks



Step 5:

In the part size editor select Calculations from the drop down.

Then double-click in one of the PrtSN cells to open the Calculation Assistant.

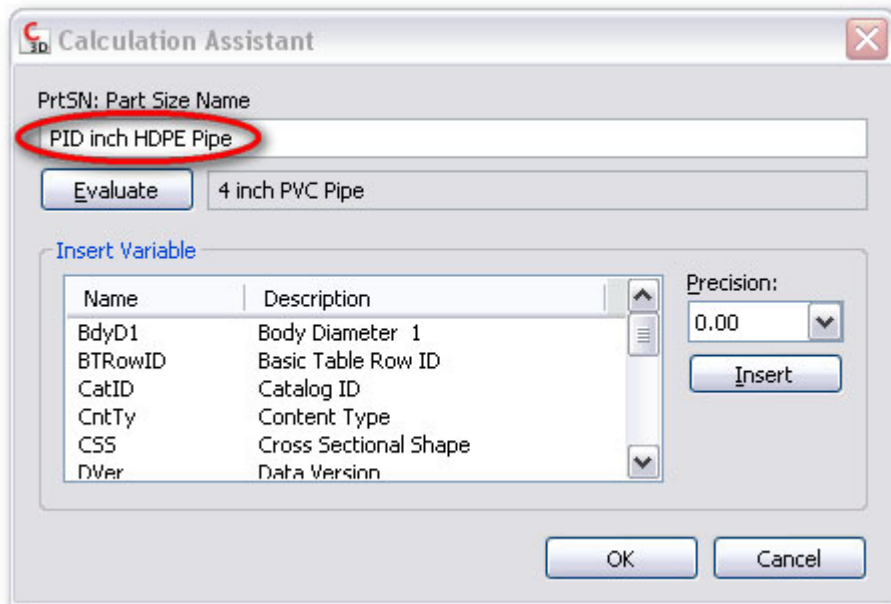


Autodesk Products Tip & Tricks

Step 6:

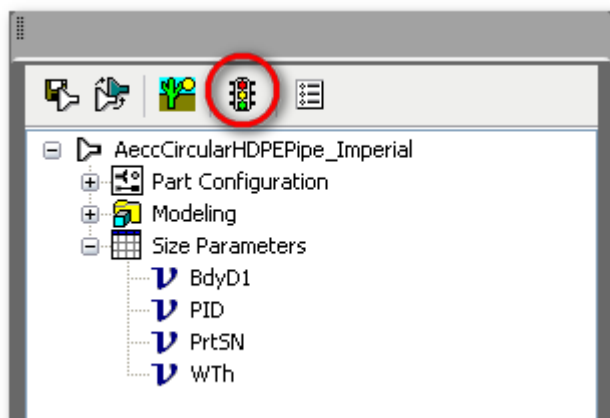
In the calculation assistant change PVC to HDPE then click OK.

Note you only need to change this once and it will update the entire part family.



Step 7:

Validate the part family. Select the validate button shown below on the Content Builder Interface.



You will receive a message that the part family validation was successful at the bottom of the Content Builder Interface.

Autodesk Products Tip & Tricks

Step 8:

Click the Save button which is the first button on the Content Builder Interface (three buttons to the left of the validate button.)

Close the Content Builder Interface.

Step 9:

Create a new parts list and select add a family.

Choose the newly created part family.

Add the part sizes.