


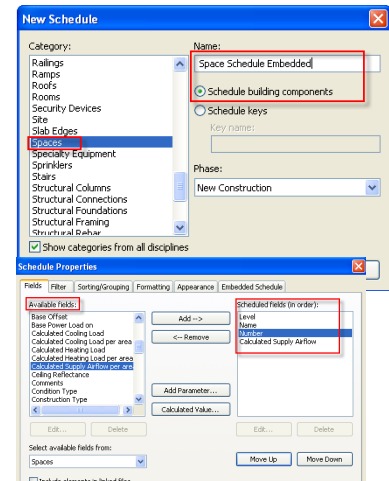
## Autodesk Products Tip & Tricks

**Product:** Revit MEP  
**Topic:** Embedded Schedules  
**Written by:** Paul C. Sills III, Sr App. Eng.  
**Date:** December 19, 2008

An embedded schedule in Revit MEP allows you to create for an example a space schedule and embed the air terminal parameters in your space schedule. With embedded schedules, we can have space, rooms, electrical, air, piping, plumbing, or fire protection systems and associate other type of object parameters together. For our example, we will use a space schedule and embed an air terminal schedule.

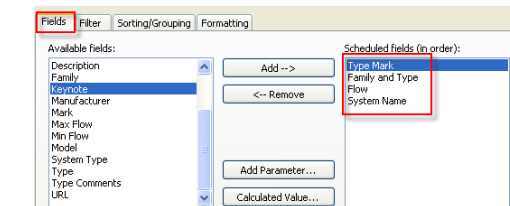
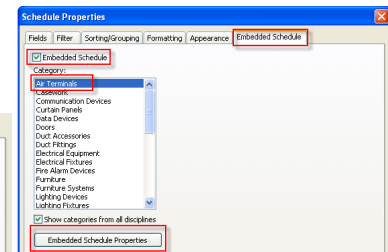
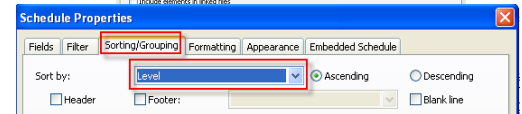
### I. Creating a Schedule

- Select the Schedule/Quantity icon on the design bar or select view - new - Schedule/Quantity to create a schedule.  Schedule/Quantities...
- Select Spaces under Category and name your schedule, I will use Space Schedule Embedded for my example.
- Select OK
- From Available fields select; Name, Number, Level, and Calculated Supply Airflow. I will place them as follows: Level, Number, Name and Calculated Supply Airflow.
- Select the Sorting tab and select Sort by; Level. This will list the level in order.



### II. Adding an Embedded Schedule

- Select the Embedded Schedule tab
  - Select Air Terminals under Category and select the Embedded Schedule Properties.
  - Under the Available Fields, areas select; Type Mark, Family and Type, Flow and System Name. I will place these categories in this order.
  - Select the Sorting tab and for Sort By select Type Mark
  - Select OK to exit all dialogs.
- You can see our schedule below.



Level	Name	Number	Calculated Supply Airflow
Type Mark	Family and Type	Flow	System Name
Level 1	Open	104	2265 CFM
	Return Diffuser - Hosted Workplane-based Return Diffuser	325 CFM	Default Return Air (customer name)
	Return Diffuser - Hosted Workplane-based Return Diffuser	325 CFM	Default Return Air (customer name)
	Supply Diffuser - Hosted Workplane-based Supply Diffuser	255 CFM	Mechanical Supply Air 3
	Supply Diffuser - Hosted Workplane-based Supply Diffuser	255 CFM	Mechanical Supply Air 9
	Supply Diffuser - Hosted Workplane-based Supply Diffuser	255 CFM	Mechanical Supply Air 9
	Supply Diffuser - Hosted Workplane-based Supply Diffuser	255 CFM	Mechanical Supply Air 3
	Supply Diffuser - Hosted Workplane-based Supply Diffuser	255 CFM	Mechanical Supply Air 3
	Supply Diffuser - Hosted Workplane-based Supply Diffuser	255 CFM	Mechanical Supply Air 3
	Supply Diffuser - Hosted Workplane-based Supply Diffuser	255 CFM	Mechanical Supply Air 7
	Supply Diffuser - Hosted Workplane-based Supply Diffuser	255 CFM	Mechanical Supply Air 7
Level 1	Stairwell	114	Not Computed
Level 1	Office	113	344 CFM
	Supply Diffuser - Hosted Workplane-based Supply Diffuser	175 CFM	Mechanical Supply Air 8
	Supply Diffuser - Hosted Workplane-based Supply Diffuser	175 CFM	Mechanical Supply Air 8
Level 1	Office	112	252 CFM
	Supply Diffuser - Hosted Workplane-based Supply Diffuser	250 CFM	Mechanical Supply Air 6
Level 1	Office	111	329 CFM
	Supply Diffuser - Hosted Workplane-based Supply Diffuser	165 CFM	Mechanical Supply Air 6
	Supply Diffuser - Hosted Workplane-based Supply Diffuser	165 CFM	Mechanical Supply Air 6
Level 1	Office	110	285 CFM
	Supply Diffuser - Hosted Workplane-based Supply Diffuser	145 CFM	Mechanical Supply Air 5
	Supply Diffuser - Hosted Workplane-based Supply Diffuser	145 CFM	Mechanical Supply Air 5