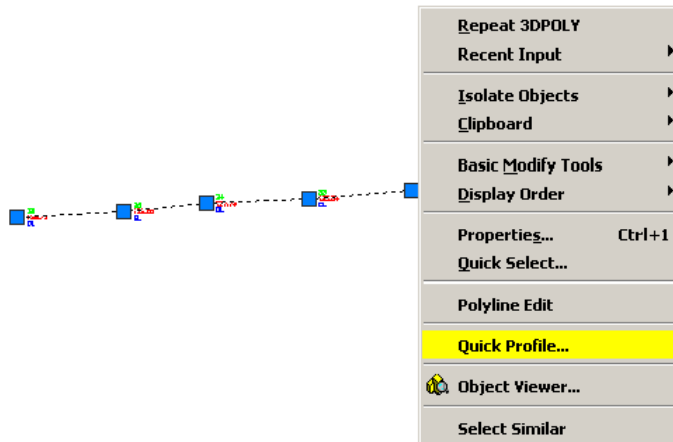

Autodesk Products Tip & Tricks

Product: Civil 3D 2009
Topic: Profiles from Centerline Survey Only
Written by: Leo Lavayen, ISD Tech.
Date: December 22, 2008

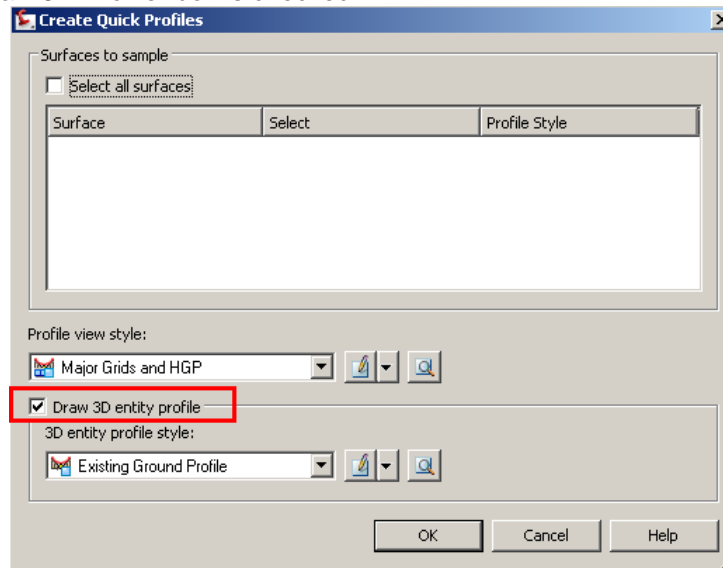
Problem: An Existing Grade Profile is needed, but only centerline survey is available. In most cases, this isn't enough points to create a Surface and Sample it.

Solution: Create a Quick Profile of a 3D Polyline or Feature Line and Use LandXML.

1. Create line work with true 3D elevations along points by using a Feature Line or 3DPoly.
2. Select the line, Right Click > Quick Profile...

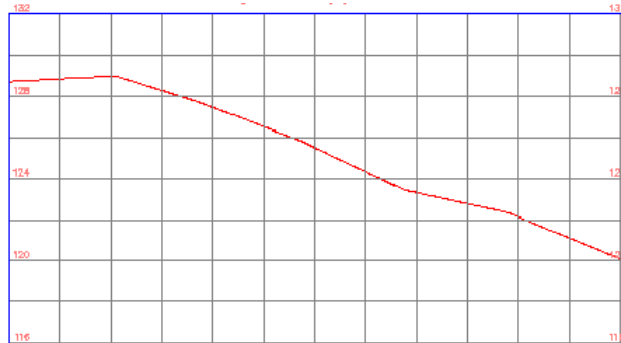


3. Ensure that the "Draw 3D Profile" box is checked.

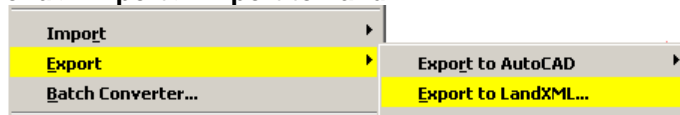


4. Place the Profile View in drawing.

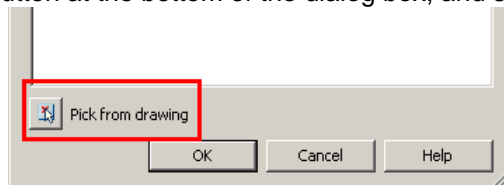
Autodesk Products Tip & Tricks



5. Then go to the **File Menu > Export > Export to LandXML...**



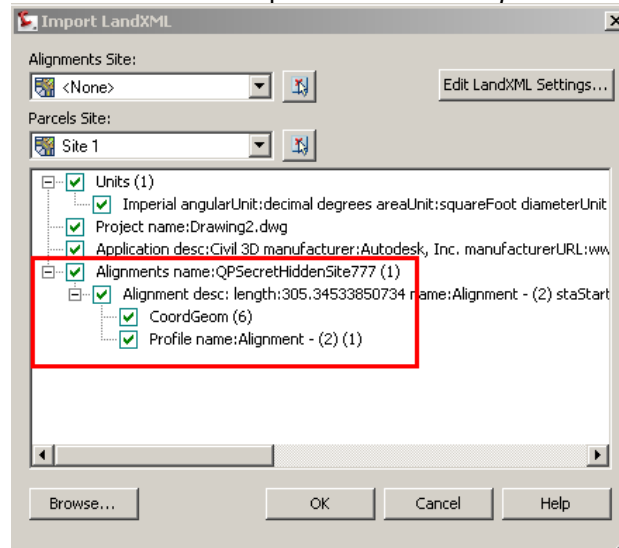
6. Use the *Pick from Drawing* button at the bottom of the dialog box, and select on screen the Profile.



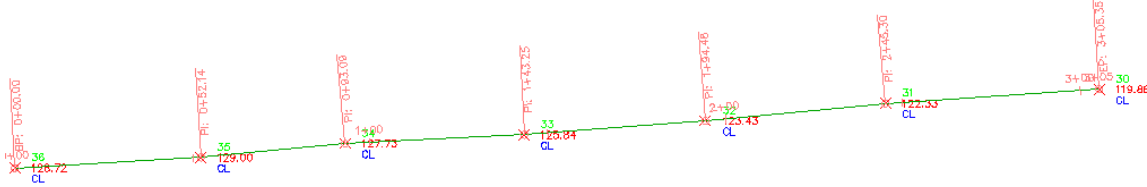
7. Save the XML file to a easy to find Location.
8. Return to the **File Menu > Import > Import LandXML...**



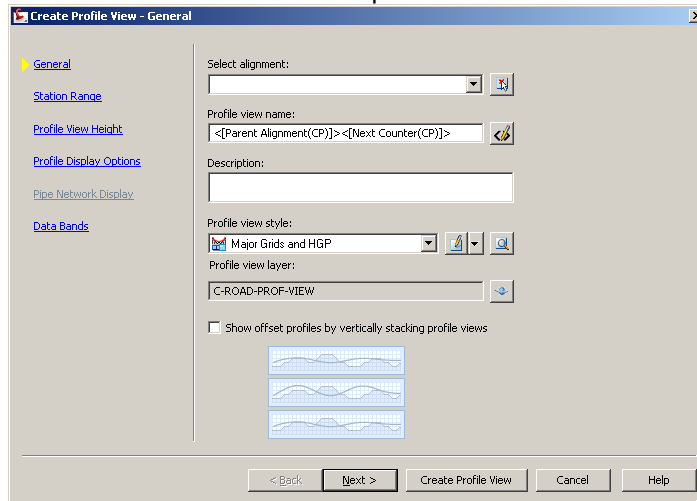
9. And browse to save XML file.
10. Notice how an Alignment and Profile will be imported from the “*Super Secret Hidden Site*”



Autodesk Products Tip & Tricks



11. Now create a Profile View from the data that was imported. **Profile Menu > Create Profile View...**



12. Place the Profile view in desired location.

