



## Hercules Wireless N150 USB Pico (HWNUp-150)

Quick Start Guide  
 Guide de démarrage rapide  
 Schnellstart-Anleitung  
 Beknopte handleiding  
 Guía de inicio rápido  
 Guida Rapida  
 Guia de início rápido  
 Краткое руководство пользователя



**UK/US** – Box contents  
**F** – Contenu de la boîte  
**D** – Packungsinhalt  
**NL** – Beknopte handleiding  
**E** – Contenidos de la caja  
**I** – Contenuto della Confezione  
**P** – Conteúdo da caixa  
**Русский** – Содержимое упаковки



**UK/US** – Insert the installation CD-ROM (included in the box) into your computer's drive  
**F** – Insérez le CD Rom d'installation fourni dans la boîte  
**D** – Legen Sie die Installations-CD-ROM (in der Box enthalten) in Ihr Computer-Laufwerk  
**NL** – Plaats de meegeleverde installatie-cd in uw computer  
**E** – Inserta el CD-ROM de instalación (incluido en la caja) en el lector del ordenador  
**I** – Inserire il CD-ROM d'installazione (contenuto nella confezione) nel lettore del computer  
**P** – Insira o CD-ROM de instalação (incluído na caixa) na unidade do computador  
**Русский** – Вставьте установочный диск (входит в комплект поставки) в привод на компьютере

2



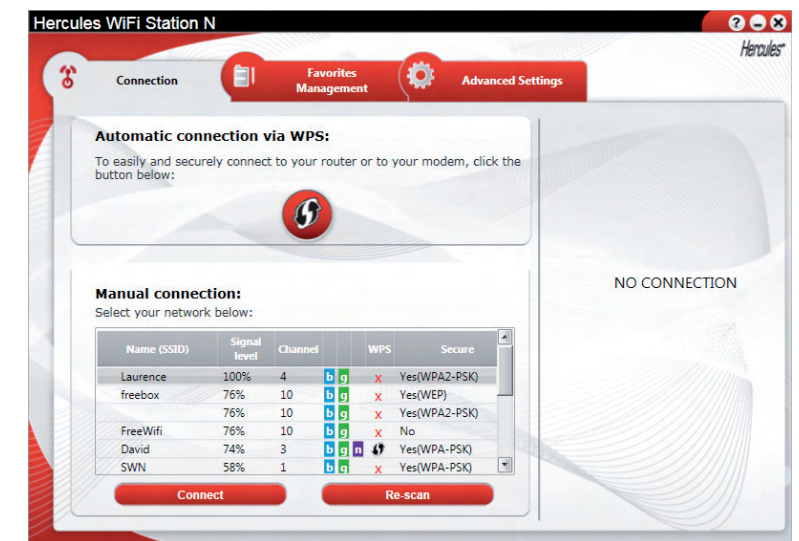
**UK/US** – The installation menu appears automatically. If the installation menu does not appear automatically, explore the files on the CD-ROM and double-click on setup.exe. Click "Install WiFi Station N" and follow the instructions.  
**F** – Le menu d'installation apparaît automatiquement. Si le menu d'installation ne se lance pas automatiquement, explorez les fichiers du CD-ROM et double cliquez sur setup.exe. Cliquez sur « Installer WiFi Station N » et suivez les instructions.  
**D** – Das Installationsmenü startet automatisch. Falls dies nicht geschehen sollte, durchsuchen Sie die Dateien auf der CD-ROM und doppelklicken auf setup.exe. Klicken Sie auf "WiFi Station N installieren" und folgen den Instruktionen.  
**NL** – Het installatiemenu wordt automatisch weergegeven. Als het installatiemenu niet automatisch wordt weergegeven, gaat u met een venkener naar de bestanden op de cd en dubbelklikt u op setup.exe. Klik op "WiFi Station N installeren" en volg de instructies.  
**E** – Aparecerá automáticamente el menú de instalación. Si el menú de instalación no aparece automáticamente, explore los archivos del CD-ROM e haz doble clic en setup.exe. Haz clic en "Instalar WiFi Station N" y sigue las instrucciones.  
**I** – Appare automaticamente il menu d'installazione. Qualora il menu d'installazione non dovesse apparire automaticamente, aprire il contenuto del CD-ROM e fare doppio clic sul file setup.exe. Fare clic su "Installare WiFi Station N" e seguire le istruzioni.  
**P** – O menu de instalação surge automaticamente. Se o menu de instalação não surgir automaticamente, explore os ficheiros no CD-ROM e faça duplo clique em setup.exe. Clique em "Instalar o WiFi Station N" e siga as instruções.  
**Русский** – Установочное меню появится автоматически. Если установочное меню не появилось автоматически, запустите файл setup.exe в корневой папке диска двойным нажатием кнопки мыши. Выберите "Установка WiFi Station N" и следуйте инструкциям.

3



**UK/US** – Connect the WiFi key to a free USB port on your computer, when prompted to do so by the installation assistant.  
**F** – Insérer la clé WiFi dans un port USB libre, lorsque l'assistant d'installation le demande  
**D** – Stecken Sie den WiFi Key in einen freien USB-Port an Ihrem Computer, wenn Sie der Installationsassistent dazu auffordert.  
**NL** – Sluit de WiFi-stick aan op een USB-poort van uw computer wanneer de installatie-assistent u hierom vraagt.  
**E** – Conecta la llave WiFi a un puerto USB libre del ordenador cuando el asistente de instalación te pida que lo hagas.  
**I** – Quando vi verrà richiesto dalla configurazione guidata, connettere la chiavetta WiFi a una porta USB libera del computer.  
**P** – Ligue a chave WiFi a uma porta USB livre do computador quando o assistente de instalação lhe pedir que o faça.  
**Русский** – Подключите ключ WiFi к свободному USB-порту на компьютере, когда установочная программа выведет сообщение об этом.

4



**UK/US** – The WiFi Station N software is launched: your WiFi key is now ready for use  
**F** – Le logiciel WiFi Station se lance, votre clé WiFi est prête à être utilisée  
**D** – Die WiFi Station N Software startet: Ihr WiFi Key kann nun benutzt werden  
**NL** – De WiFi Station N-software wordt gestart: uw WiFi-stick is nu gereed voor gebruik  
**E** – Se ejecutará el software WiFi Station N: la llave WiFi ya está lista para usar  
**I** – Viene lanciato il software WiFi Station N: la vostra chiavetta WiFi è ora pronta all'uso  
**P** – O software WiFi Station N é executado: a sua chave WiFi está agora pronta para ser utilizada  
**Русский** – Программа WiFi Station N запущена и ключ WiFi готов к работе

5



**UK/US** – To connect using the WPS function  
**F** – Pour vous connecter avec la fonction WPS  
**D** – Zum Verbinden nutzen Sie bitte die WPS Funktion  
**NL** – Een verbinding maken met behulp van de WPS-functie  
**E** – Para conectar mediante la función WPS  
**I** – Per collegarti utilizzando la funzione WPS  
**P** – Para ligar através da função WPS  
**Русский** – Чтобы подключить с использованием функции WPS

## Information

### UK/US: TECHNICAL SUPPORT

If you encounter a problem with your product, please go to <http://ts.hercules.com> and select your language. From there you will be able to access various utilities (Frequently Asked Questions (FAQ), the latest versions of drivers and software) that may help to resolve your problem. If the problem persists, you can contact the Hercules products technical support service. Technical support details available in the PDF manual included on the CD-ROM.

### FR: ASSISTANCE TECHNIQUE

Si vous rencontrez un problème avec votre produit, rendez-vous sur le site <http://ts.hercules.com> et sélectionnez votre langue. Vous aurez alors accès à différents services (Foire Aux Questions (FAQ), dernières versions du firmware) susceptibles de résoudre votre problème. Si le problème persiste, vous pouvez contacter notre support technique. Coordonnées du support dans le manuel PDF sur le CD-ROM.

### D: TECHNISCHER SUPPORT

Wählen Sie Ihre Sprache. Von dort aus können Sie auf verschiedene Instrumente zugreifen (Fragen und Antworten (FAQ), die neuesten Versionen von Treibern und Software), die Ihnen bei der Lösung Ihres Problems helfen könnten. Falls das Problem weiterhin besteht, können Sie mit dem technischen Support der Hercules Produkten in Kontakt treten. Details zum technischen Support finden Sie im PDF-Handbuch, das auf der CD-ROM enthalten ist.

### NL: TECHNISCHE ONDERSTEUNING

Als u problemen hebt met uw product, gaat u naar <http://ts.hercules.com> en selecteer de gewenste taal. Vanaf hier hebt u toegang tot verschillende onderwerpen zoals hulpprogramma's, de FAQ (veelgestelde vragen) en de meest recente drivers en software die u helpen bij het vinden van oplossingen. Als het probleem zich blijft voordoen, neem dan contact op met de Hercules product technical support service. Informatie over technische ondersteuning vindt u in de PDF-handleiding op de meegeleverde cd.

### E: SOPORTE TÉCNICO

Si encuentras un problema con tu producto, visita <http://ts.hercules.com> y selecciona tu idioma. Desde allí podrás acceder a distintas utilidades (preguntas frecuentes (Frequently Asked Questions, FAQ), las últimas versiones de controladores y software) que pueden ayudarte a resolver tu problema. Si el problema persiste, puedes contactar con el servicio de soporte técnico de los productos de Hercules. Datos de soporte técnico disponibles en el manual en PDF incluido en el CD-ROM.

### I: ASSISTENZA TECNICA

Se avessi riscontrassi un problema riguardante il tuo prodotto, visita il sito <http://ts.hercules.com> e seleziona la tua lingua. Da questo sito, potrai accedere a vari servizi (Risposte alle domande più frequenti (FAQ), le versioni più recenti di driver e software) che potrebbero aiutarti a risolvere il tuo problema. Qualora il problema persistesse, puoi contattare il servizio di assistenza tecnica per i prodotti Hercules. I dettagli sul Servizio di assistenza tecnica sono disponibili nel manuale PDF incluso nel CD-ROM.

### P: SUPORTE TÉCNICO

Se tiver algum problema com o seu produto, por favor vá até <http://ts.hercules.com> e selecione a sua língua. A partir daqui poderá aceder a vários utilitários (Perguntas Mais Frequentes (FAQ), as versões mais recentes dos controladores e software) que podem ajudá-lo a resolver o seu problema. Se o problema se mantiver, pode contactar o serviço de suporte técnico dos produtos Hercules. Os detalhes de suporte técnico estão disponíveis no manual em PDF incluído no CD-ROM.

### WARRANTY

Worldwide, Guillemot Corporation S.A. ("Guillemot") warrants to the consumer that this Hercules product will be free from material defects and manufacturing flaws for a period of two (2) years from the original date of purchase. Should the product appear to be defective during the warranty period, immediately contact Technical Support, who will indicate the procedure to follow. If the defect is confirmed, the product must be returned to its place of purchase (or any other location indicated by Technical Support).

Within the context of this warranty, the consumer's defective product will, at Technical Support's option, be either repaired or replaced. Where authorized by applicable law, the full liability of Guillemot and its subsidiaries (including for indirect damages) is limited to the repair or replacement of the Hercules product. The consumer's legal rights with respect to legislation applicable to the sale of consumer goods are not affected by this warranty.

This warranty shall not apply: (1) if the product has been modified, opened, altered, or has suffered damage as a result of inappropriate or abusive use, negligence, an accident, normal wear, or any other cause not related to a material defect or manufacturing flaw; (2) in the event of failure to comply with the instructions provided by Technical Support; (3) to software not published by Guillemot, said software being subject to a specific warranty provided by its publisher.

## Certifications

### DECLARATION OF CONFORMITY WITH EU DIRECTIVES

This device can be used in: AT, BE, FR, DE, IE, IT, LU, NL, PL, ES, SE, GB, FI, CH.  
 Hereby, GUILLEMOT CORPORATION, Carentoir France, declares that this Hercules HWNU-150 is in compliance with the essential requirements and other relevant provisions of Directive 1999/5/EC. The Declaration of Conformity can be consulted at this website address: [http://ftp.hercules.com/wifi/DoC/HWNU-150/DoC-eng\\_Hercules\\_HWNU-150](http://ftp.hercules.com/wifi/DoC/HWNU-150/DoC-eng_Hercules_HWNU-150)

CE 1177

Hercules is a division of Guillemot Corporation.

**FRANCE:** When this equipment is used outdoors, output power is limited to within the frequency bands listed below. For more information, consult the ART website: [www.art-telecom.fr](http://www.art-telecom.fr).

Location	Frequency band (MHz)	Power (EIRP)
Indoor (no restrictions)	2400 – 2483.5	100mW (20dBm)
Outdoor	2400 – 2454	100mW (20dBm)
	2454 – 2483.5	10mW (10dBm)

Operation of this equipment in a residential environment may give rise to radio interference; if so, it is incumbent upon the user to rectify the situation.

**ITALY:** This device complies with the National Radio Interface and the requirements of the Frequency Allocation Table. Use of this wireless product outside of the boundaries of the owner's property requires a general authorization. For more information, consult the website [www.comunicazioni.it](http://www.comunicazioni.it).

### FCC FEDERAL COMMUNICATION COMMISSION INTERFERENCE STATEMENT

This equipment has been tested and found to comply with the limits for a Class B digital device, pursuant to Part 15 of the FCC Rules. These limits are designed to provide reasonable protection against harmful interference in a residential installation. This equipment generates, uses and can radiate radio frequency energy and, if not installed and used in accordance with the instructions, may cause harmful interference to radio communications. However, there is no guarantee that interference will not occur in a particular installation. If this equipment does cause harmful interference to radio or television reception, which can be determined by turning the equipment off and on, the user is encouraged to try to correct the interference by one of the following measures:

- Reorient or relocate the receiving antenna.
- Increase the separation between the equipment and receiver.
- Connect the equipment into an outlet on a circuit different from that to which the receiver is connected.
- Consult the dealer or an experienced radio/TV technician for help.

This device complies with Part 15 of the FCC Rules. Operation is subject to the following two conditions: (1) This device may not cause harmful interference, and (2) this device must accept any interference received, including interference that may cause undesired operation. This device and its antenna(s) must not be co-located or operating in conjunction with any other antenna or transmitter. FCC Caution: Any changes or modifications not expressly approved by the party responsible for compliance could void the user's authority to operate this equipment.

### IMPORTANT NOTE: FCC Radiation Exposure Statement:

This equipment complies with FCC radiation exposure limits set forth for an uncontrolled environment. This equipment should be installed and operated with minimum distance 20cm between the radiator & your body.



### ENVIRONMENTAL PROTECTION RECOMMENDATION

At the end of its working life, this product should not be disposed of with standard household waste, but rather dropped off at a collection point for the disposal of Waste Electrical and Electronic Equipment (WEEE) for recycling. This is confirmed by the symbol found on the product, user manual or packaging. Depending on their characteristics, the materials may be recycled. Through recycling and other forms of processing Waste Electrical and Electronic Equipment, you can make a significant contribution towards helping to protect the environment. Please contact your local authorities for information on the collection point nearest you.

**Please contact your local authorities for information on the collection point nearest you.**

### Copyright – Registered Trademarks

© Guillemot Corporation S.A. 2010. All rights reserved. Hercules® is a registered trademark of Guillemot Corporation S.A. Microsoft® Windows®, XP®, Vista® and 7 are registered trademarks of Microsoft Corporation in the United States and/or other countries. All other trademarks and brand names are hereby acknowledged and are property of their respective owners. Illustrations not binding.

## Also available



Hercules Wireless N300 USB Mini  
(HWNUm-300)



Hercules Wireless N Router  
(HWNRI-300)

5090795