

INTRODUCTION

A local area **WiFi** network allows users to easily exchange data between computers located in the same room or in different rooms, share an Internet connection and/or a printer among several computers, play network games and, above all, does away with the need for kilometers worth of cables.

By following the instructions in this manual, you will be able to install a local area WiFi network and secure it.

MORE DETAILED INFORMATION

Once installation of the drivers for your key is complete, you can access a more detailed manual, in PDF format, directly on your computer by clicking **Start - All Programs - Hercules Wireless N USB**. In it, you will find all of the information you need to learn how to configure and use your Hercules Wireless N USB.

HERCULES WIRELESS N USB INSTALLATION



Before connecting your Hercules Wireless N USB, you must first install Hercules WiFi Station, which includes the drivers and the WiFi Station application, a utility for detecting networks and configuring network settings.


1 - Installing the WiFi Station pack and the USB key

To install Hercules WiFi Station, proceed as follows:

- Insert the included installation CD-ROM into your CD-ROM drive.

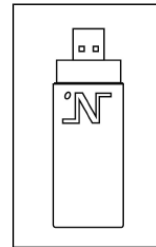
The installation menu appears automatically.

If the installation menu does not launch automatically:

- Double-click **My Computer** or **Computer** (Windows Vista).
- Double-click  **WiFi**.
- If necessary, double-click **Setup.exe**.
- Click **Install WiFi Station – USB version**.
- Follow the on-screen instructions.

Windows XP/2000/Vista

- When the installation Assistant prompts you to connect your WiFi adapter, **connect your Hercules Wireless N USB to a USB port**. For information on the different ways to connect the Hercules Wireless N USB to your computer, please refer to the manual - Chapter **2.2 Connecting Hercules Wireless N USB to your computer**.



ENGLISH

FRANÇAIS

DEUTSCH

NEDERLANDS

ITALIANO

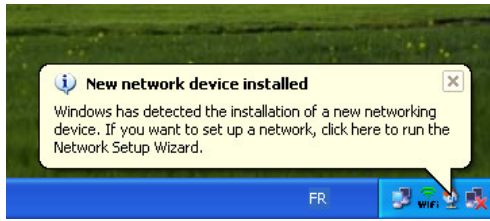
ESPAÑOL

PORTUGUES

Русский

The Assistant automatically detects your adapter and continues the installation. If the Windows **New Hardware Found** window appears, wait until it closes.

Once installation is complete, the Hercules WiFi Station icon appears in the taskbar and WiFi Station is launched automatically.



If the New network device installed message appears in the taskbar:

- Do not click the information bubble: wait for it to disappear or click the X to close it.
- Please refer to the Manual - Chapter 5. **Welcome to the Wireless Attitude!** for details on how to configure your network.

2 - Connecting to a network

With your Hercules Wireless N USB key, there are 2 ways to connect to a network: the quick and easy method by simply pressing the button located on the side of the key, or via the standard method of selecting the network you wish to connect to in the list of networks detected.

The button connection method (WPS):

The button method is only possible if the network to which you want to connect is equipped with the "WiFi

Protected Setup" function. This function is generally indicated by way of the WPS logo



If you own a Hercules device from the "Wireless N" range, you can use this connection method; if not, please first verify whether your equipment features this function.

1. Press the button on the device managing the network to which you want to connect (a router, for example).
2. Press the button located on the side of the Hercules Wireless N USB key.

The process takes about 2 minutes from the time you press the button on the device managing the network. When this amount of time has elapsed, you will be connected to the network and you won't have to repeat this procedure for the next connection.

The button method automatically generates a WPA2 security key if no key has been previously defined.

NB 1: If the device managing the network does not have a button but is compatible with the WPS function, please refer to the **user manual** available on the installation CD-ROM.

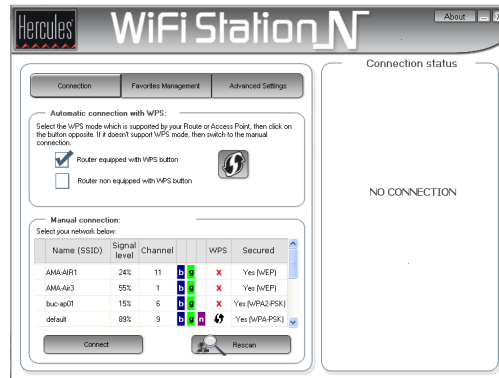
NB 2: It is possible not to press the button on the Hercules Wireless N USB key using the method known as PIN. The WiFi Station software gives you access to a user interface, and will guide you through this procedure.

The list of networks connection method:

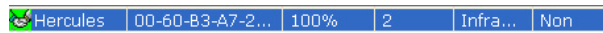
Please launch the WiFi Station software if it is not already running, and refer to the main page; a scan of available WiFi networks is carried out automatically. The **List of detected networks** lists all security-enabled, non security-enabled or hidden networks, of Infrastructure or Ad hoc type.

To connect to a network:

- Select your choice of network.
- Click the **Connect to the network** button.
- If the network is **security-enabled**, enter the associated key when prompted to do so.



After a few seconds, a green icon is displayed next to the network name to indicate that you are connected to the network.



Please refer to the manual for more detailed information.

ENGLISH

FRANÇAIS

DEUTSCH

NEDERLANDS

ITALIANO

ESPAÑOL

PORTUGUES

Русский

TECHNICAL SUPPORT

If you encounter a problem with your product, please go to <http://ts.hercules.com> and select your language. From there you will be able to access various utilities (Frequently Asked Questions (FAQ), the latest versions of drivers and software) that may help to resolve your problem. If the problem persists, you can contact the Hercules products technical support service ("Technical Support"):

By email:

In order to take advantage of technical support by email, you must first register online. The information you provide will help the agents to resolve your problem more quickly.

Click **Registration** on the left-hand side of the Technical Support page and follow the on-screen instructions. If you have already registered, fill in the **Username** and **Password** fields and then click **Login**.

By telephone:

United Kingdom	08450800942 Charges at local rate	Monday to Friday from Noon to 4pm and 5pm to 10pm Saturday from 9am to Noon and 1pm to 7pm Sunday from 9am to Noon and 1pm to 4pm
United States	1-866-889-5036 Free	Monday to Friday from 7am to 11am and from Noon to 5pm Saturday and Sunday from 7am to Noon (Eastern Standard Time)
Canada	1-866-889-2181 Free	Monday to Friday from 7am to 11am and from Noon to 5pm Saturday and Sunday from 7am to Noon (Eastern Standard Time)
Denmark	80887690 Free	Monday to Friday from 1pm to 5pm and 6pm to 11pm (English) Saturday from 9am to 1pm and 2pm to 8pm Sunday from 10am to 1pm and 2pm to 5pm
Sweden	0200884567 Free	Monday to Friday from 1pm to 5pm and 6pm to 11pm (English) Saturday from 9am to 1pm and 2pm to 8pm Sunday from 10am to 1pm and 2pm to 5pm
Finland	0800 913060 Free	Monday to Friday from 2pm to 6pm and 7pm to Midnight (English) Saturday from 10am to 2pm and 3pm to 9pm Sunday from 11am to 2pm and 3pm to 6pm

WARRANTY

Worldwide, Guillemot Corporation S.A. ("Guillemot") warrants to the consumer that this Hercules product will be free from material defects and manufacturing flaws for a period of two (2) years from the original date of purchase. Should the product appear to be defective during the warranty period, immediately contact Technical Support, who will indicate the procedure to follow. If the defect is confirmed, the product must be returned to its place of purchase (or any other location indicated by Technical Support).

Within the context of this warranty, the consumer's defective product will, at Technical Support's option, be either repaired or replaced. Where authorized by applicable law, the full liability of Guillemot and its subsidiaries (including for indirect damages) is limited to the repair or replacement of the Hercules product. The consumer's legal rights with respect to legislation applicable to the sale of consumer goods are not affected by this warranty.

This warranty shall not apply: (1) if the product has been modified, opened, altered, or has suffered damage as a result of inappropriate or abusive use, negligence, an accident, normal wear, or any other cause not related to a material defect or manufacturing flaw; (2) in the event of failure to comply with the instructions provided by Technical Support; (3) to software not published by Guillemot, said software being subject to a specific warranty provided by its publisher.

Copyright – Registered Trademarks

© Guillemot Corporation S.A. 2008. All rights reserved. Hercules® is a registered trademark of Guillemot Corporation S.A. Microsoft® Windows® and vista® are registered trademarks of Microsoft Corporation in the United States and/or other countries. All other trademarks and brand names are hereby acknowledged and are property of their respective owners. Illustrations not binding.

Declaration of conformity with EU directives

This device can be used in: AT, BE, FR, DE, IE, IT, LU, NL, PL, ES, SE, GB, FI, CH.

Hereby GUILLEMOT CORPORATION, Carentoir France, declares that this **Hercules HWNU2-300** is in compliance with the essential requirements and other relevant provisions of Directive 1999/5/EC. The Declaration of Conformity can be consulted at this website address:

ftp://ftp.hercules.com/wifi/DoC/HWNU2-300/DoC-eng_Hercules_HWNU2-300.pdf



Hercules is a division of Guillemot Corporation.

FRANCE:

When this equipment is used outdoors, output power is limited to within the frequency bands listed below. For more information, consult the ART website: www.art-telecom.fr.

Location	Frequency band (MHz)	Power (EIRP)
Indoor (no restrictions)	2400 – 2483.5	100mW (20dBm)
Outdoor	2400 – 2454	100mW (20dBm)
	2454 – 2483.5	10mW (10dBm)

Operation of this equipment in a residential environment may give rise to radio interference; if so, it is incumbent upon the user to rectify the situation.

ITALY:

This device complies with the National Radio Interface and the requirements of the Frequency Allocation Table. Use of this wireless product outside of the boundaries of the owner's property requires a general authorization. For more information, consult the website www.comunicazioni.it.

ENGLISH

FRANÇAIS

DEUTSCH

NEDERLANDS

ITALIANO

ESPAÑOL

PORTUGUES

Русский



Federal Communication Commission Interference Statement

This equipment has been tested and found to comply with the limits for a Class B digital device, pursuant to Part 15 of the FCC Rules. These limits are designed to provide reasonable protection against harmful interference in a residential installation. This equipment generates uses and can radiate radio frequency energy and, if not installed and used in accordance with the instructions, may cause harmful interference to radio communications. However, there is no guarantee that interference will not occur in a particular installation. If this equipment does cause harmful interference to radio or television reception, which can be determined by turning the equipment off and on, the user is encouraged to try to correct the interference by one of the following measures:

- Reorient or relocate the receiving antenna.
- Increase the separation between the equipment and receiver.
- Connect the equipment into an outlet on a circuit different from that to which the receiver is connected.
- Consult the dealer or an experienced radio/TV technician for help.

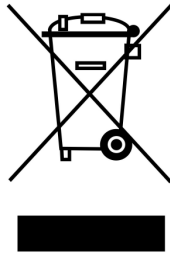
This device complies with Part 15 of the FCC Rules. Operation is subject to the following two conditions: (1) This device may not cause harmful interference, and (2) this device must accept any interference received, including interference that may cause undesired operation. This device and its antenna(s) must not be co-located or operating in conjunction with any other antenna or transmitter. FCC Caution: Any changes or modifications not expressly approved by the party responsible for compliance could void the user's authority to operate this equipment.

IMPORTANT NOTE:

Federal Communication Commission (FCC) Radiation Exposure Statement

This EUT is compliance with SAR for general population/uncontrolled exposure limits in ANSI/IEEE C95.1-1999 and had been tested in accordance with the measurement methods and procedures specified in OET Bulletin 65 Supplement C.

ENVIRONMENTAL PROTECTION RECOMMENDATION



At the end of its working life, this product should not be disposed of with standard household waste, but rather dropped off at a collection point for the disposal of Waste Electrical and Electronic Equipment (WEEE) for recycling.

This is confirmed by the symbol found on the product, user manual or packaging.

Depending on their characteristics, the materials may be recycled. Through recycling and other forms of processing Waste Electrical and Electronic Equipment, you can make a significant contribution towards helping to protect the environment.

Please contact your local authorities for information on the collection point nearest you.