

iTwinkle™ Pre-Lit Tree

IMPORTANT SAFETY INSTRUCTIONS

75 LED G35 lights with 500 Constant ON mini lights iTwinkle light show
Item Number: 00680

When using electrical products, basic precautions should always be followed including the following:

READ AND FOLLOW ALL SAFETY INSTRUCTIONS

- This is an electrical product - not a toy! To avoid the risk of fire, burns, personal injury and electric shock it should not be played with or placed where small children can reach it.
- Do not use seasonal products outdoors unless marked suitable for indoor and outdoor use. When products are used in outdoor applications, connect the product to a Ground Fault Circuit Interrupting (GFCI) outlet. If one is not provided contact a qualified electrician for proper installation.
- This seasonal use product is not intended for permanent installation or use.
- Do not mount or place near gas or electric heaters, fireplaces, candles or other similar sources of heat.
- Do not secure the wiring of the product with staples or nails, or place on sharp hooks or nails.
- Do not let lamps rest on the supply cord or on any wire.
- Unplug the product when leaving the house, when retiring for the night, or if left unattended.
- Do not use this product for other than its intended use.
- Do not hang ornaments or other objects from cord, wire, or light string.
- Do not place lighting string on carpeting, drapes, furniture or allow it to contact vinyl siding while the power is on.
- Do not perform any maintenance or troubleshoot for bad/broken lamps while the power is on.
- Do not close doors or windows on the product or extension cord as this may damage the wire insulation.
- Do not cover the product with cloth, paper or any material not part of the product when in use.
- This product has a polarized plug (one blade is wider than the other) as a feature to reduce the risk of electric shock. This plug will fit in a polarized outlet only one way. If the plug does not fit fully in the outlet, reverse the plug. If it still does not fit, contact a qualified electrician. Do not use with an extension cord unless plug can be fully inserted. Do not alter or replace the plug.
- This product is equipped with push-in type lamps. Do not twist lamps
- This product employs overload protection (fuse). A blown fuse indicates an overload or short-circuit situation. If the fuse blows, unplug the product from the outlet. Also, unplug any additional strings or products that may be attached to the product. Replace the fuse as per the User Servicing instructions (follow product marking for proper fuse rating) and check the product. If the replacement fuse blows, a short-circuit may be present and the product should be discarded.
- Read and follow all instructions that are on the product or provided with the product.

SAVE THESE INSTRUCTIONS

USE AND CARE INSTRUCTIONS

- When the product is placed on a live tree, the tree should be well maintained and fresh. Do not place on live trees in which the needles are brown or break off easily. Keep the tree holder filled with water.

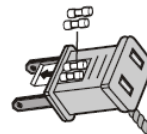
USE AND CARE INSTRUCTIONS (Continued)

- If the product is placed on a tree, the tree should be well secured and stable.
- Before using, or reusing, inspect product carefully. Discard any products that have cut, damaged or frayed wire insulation or cords, cracks in the lampholders or enclosures, loose connections, or exposed copper wire.
- When storing the product, carefully remove the product from wherever it is placed, including trees, branches, or bushes, to avoid any undue strain or stress on the product conductors, connections and wires.
- When not in use, store neatly in a cool, dry location protected from sunlight.

USER SERVICING INSTRUCTIONS

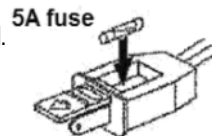
String Fuse Replacement: Most often fuses blow because too many sets have been strung end-to-end.

- Before changing fuses, make sure the set is unplugged.
- Grasp plug and remove from the receptacle or other outlet device. Do not unplug by pulling on cord.
- Using a flathead screwdriver, open fuse cover. Slide open the fuse access cover on top of attachment plug towards blades.
- Remove fuses carefully.
- Risk of fire. Replace fuse only with 3 Amp, 125 Volt fuse (provided with product).
- Close fuse cover. Slide closed the fuse access cover on top of attachment plug. Make sure door is fully closed and fuses are completely covered.
- Risk of fire. Do not replace attachment plug. Contains a safety device (fuse) that should not be removed. Discard product if the attachment plug is damaged.



Control Box Fuse Replacement: Replace the fuse.

- Grasp the plug and remove from the receptacle or other outlet device. Do not unplug by pulling on cord.
- Using a flathead screwdriver, open fuse cover. Slide open the fuse access cover on top of attachment plug towards blades.
- Remove fuses carefully.
- Risk of fire. Replace fuse only with 5 Amp, 125 Volt fuse (provided with product).
- Close fuse cover. Slide closed the fuse access cover on top of attachment plug. Make sure door is fully closed and fuses are completely covered.
- Risk of fire. Do not replace attachment plug. Contains a safety device (fuse) that should not be removed. Discard product if the attachment plug is damaged.



Install Class 2 Power Supply To String:

NOTE: Use only this GE branded, Class 2 Power Supply, Model SA3A-050-3000, manufactured by TDC that was provided with this product. **DO NOT** use this adapter with any other product.

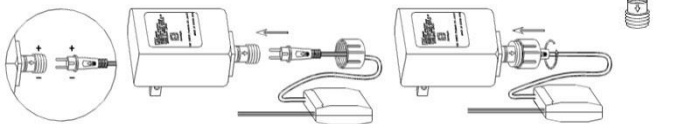


Fig. 1

Fig. 2

Fig. 3

1. Remove the Power Supply from its packing box.
2. The LED string is fitted with a 2-pronged fitting.
3. Align the notch in fitting with the inner tab on end of Power Supply {Fig. 1}
4. Fully insert the fitting into the Power Supply {Fig. 2}
5. Screw the collar completely onto the Power Supply turning clockwise {Fig. 3}

WARNING This string contains two different types of Replaceable bulbs - steady-illuminating and fuse. **REPLACEABLE FUSED BULBS** are identified with white bases. There is one fuse bulb for each lighted circuit of 50 bulbs. Always replace burned-out bulbs promptly. If a number of bulbs are burned out, extra stress is put on the remaining bulbs in the circuit. **REPLACEABLE FUSED BULBS** identified with a white base. This may cause additional bulbs to burn out prematurely. When a fuse bulb fails the entire circuit will not light.

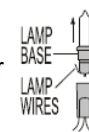


Note: G35 LED's are non-replaceable. Tampering with this set voids the warranty.

Replace Steady Bulb: Before changing bulbs, make sure set is unplugged.

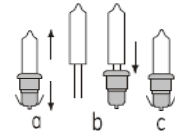
NOTE: Steady and Fuse bulbs are not interchangeable.

- Grasp plug and remove from the receptacle or other outlet device. Do not unplug by pulling cord.
- Hold bulb by the plastic base and pull bulb/base straight out of socket.
- Replace bulb with only 2.5 Volt, 0.425Watt super bright midjet push-in type lamp provided with product.
- Push spare bulb/base assembly into socket. Do not twist bulb when inserting into socket. If bulbs are twisted, part of the set will not light.



Follow a)-b) above If the spare bulbs provided with the product have no plastic base or the plastic base does not fit.

Then 1) Remove the old bulb by straightening the bulb wires and pulling bulb straight from the base. (Fig. a), 2) Replace the new bulb by straightening the bulb leads and aiming each wire into a separate hole in the plastic base (Fig. b), 3) Make sure each bulb lead comes out an exit opening at the bottom of the plastic base. Now bend each lead up such that each bulb lead fits closely against the narrow side and in the center of the plastic base (Fig. c).



Replace Fuse Bulb:

NOTE: Fuse bulbs are secured in the base with adhesive. Do not attempt to remove. Remove old fuse bulb and replace with only 2.5 Volt, 0.425Watt fuse bulbs provided with product.

CAUTION:

- To reduce the risk of fire and electric shock:
 - Do not install on trees having needles, leaves or branch coverings of metal or materials which look like metal, and
 - Do not mount or support strings in a manner that can cut or damage wire insulation.
- To reduce the risk of overheating, replace burned-out lamps promptly. Use 2.5 Volt, 0.425Watt lamps only.
- This Pre-Lit tree is rated 219 Watts (1.825 Amps), do not overload.
- Risk of fire. This product employs overload protection (fuse bulb) in each series circuit to provide overload protection in addition to the fuse(s) located in the plug. Do not replace the fuse bulb contained in this set with any other type of bulb. Use only spare fuse bulbs provided with this product.



IMPORTANT!

Read Carefully

Keep for future use

7.5 ft. / 2.2 m Pre-Lit Christmas Tree with Pre-shaped Technology Allows tree branches to spring into shape Just assemble and decorate!

With proper use and care, your tree will provide years of use and memories. Carefully follow the instructions below on how to assemble and disassemble your tree. If you should have any problems with your tree, or if the tree does not light after assembly, please refer to the trouble shooting section of this manual or call our toll free number: **1-877-398-7337** and a customer service representative will assist you. Our customer service center is open Monday through Friday 10:00 AM to 7:00 PM EST with additional hours throughout the holiday season. You can also visit us on the web at: www.geholidaylighting.com
Enjoy your holidays!

Before you Begin:

- * The tree needs to be placed in a clear area, on a flat surface with no obstructions.
- * Remove and unwrap all parts. Retain shipping carton for future storage.

Preassembly:

- * Refer to the iTwinkle TREE™ Assembly Diagram.
- * Loosen thumbscrew in stand for legs to open and pole to insert.
- * Place stand where desired as assembled tree is heavy to move.

Disclaimer: DO NOT USE OR INSTALL ANY ADDITIONAL CHRISTMAS LIGHTING OR ORNAMENTATION THAT IS POWERED BY A LIGHT BULB SOCKET. DOING THIS MAY RESULT IN DAMAGE TO YOUR CHRISTMAS TREE OR CAUSE PERSONAL INJURY. DOING THIS, WILL RESULT IN A VOID OF THE LIMITED WARRANTY OF THIS PRODUCT.

This device complies with Part 15 of the FCC Rules.

Operation is subject to the following two conditions:

- this device may not cause harmful interference, and
- this device must accept any interference received, including interference that may cause undesired operation.

Modifications not approved by the party responsible for compliance could void user's authority to operate the equipment.

NOTE: This equipment has been tested and found to comply with the limits for Class B digital device, pursuant to Part 15 of the FCC Rules. These limits are designed to provide reasonable protection against harmful interference in a residential installation. This equipment generates, uses and can radiate radio frequency energy and, if not installed and used in accordance with the instructions, may cause harmful interference to radio or television reception, which can be determined by turning the equipment off and on, the user is encouraged to try to correct the interference by one or more of the following measures:

- * Reorient or relocate the receiving antenna.
- * Increase the separation between the equipment and the receiver.
- * Connect the equipment into an outlet on a circuit different from that to which the receiver is connected.
- * Consult the dealer or an experienced radio/TV technician for help.

iTwinkle™ LIGHT
Tree Assembly Diagram



6. Holding the treetop with one hand gently pull down the outer layer of branches. Then align the treetop post with the top of Pole B and insert fully. (See picture on left)



5. Untie the **RED** twist-tie to release the branch panels. All branches should fall into place with a gentle pull on the outer layer of branches.

3. Assemble Pole B into Pole A after first removing the protective green cap. **NOTE:** On a bottom branch near the pole is a special 3-prong male LED connector. See insert at top.

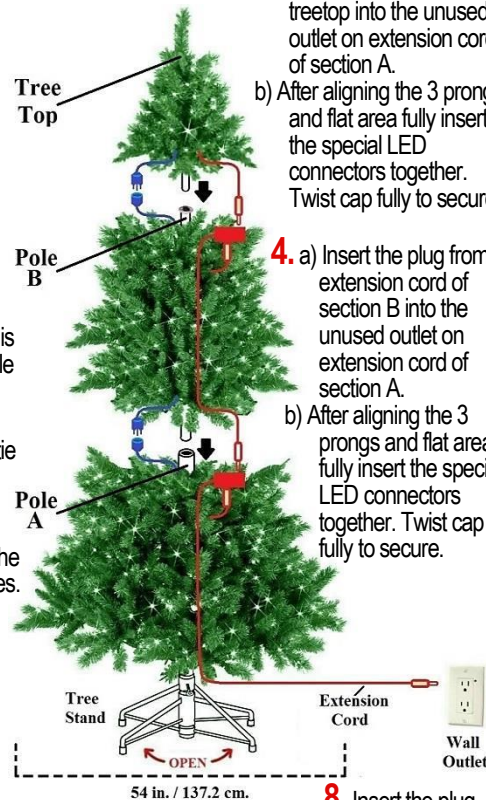
2. Untie the **RED** twist-tie to release the branch panels. All branches should fall into place with a gentle pull on the outer layer of branches. **NOTE:** On a top branch near the Pole is a special 3-holed female LED Connector. See insert at top.

1. Open the tree stand, remove the protective red cap from Pole A, insert this pole into the stand and tighten the screw. **NOTE:** Remove the white twist-tie around looped cord at bottom with plug, extend cord and set aside until Step 8.

7. a) Insert the plug from the treetop into the unused outlet on extension cord of section A.
b) After aligning the 3 prongs and flat area fully insert the special LED connectors together. Twist cap fully to secure.

4. a) Insert the plug from extension cord of section B into the unused outlet on extension cord of section A.
b) After aligning the 3 prongs and flat area fully insert the special LED connectors together. Twist cap fully to secure.

8. Insert the plug from the Step 1 **NOTE** directly into an electrical wall outlet to turn the tree lights on.



If needed, adjust branch tips to make the tree look fuller.

Congratulations!

Your lighted tree is complete and ready to use with your selected Apple device.

Trouble shooting Tips:

If tree does not illuminate, the tree may be plugged into a controlled wall outlet. Make sure the switch is turned ON. If a tree section does not light, check:

- * Sections A, B or Treetop: Recheck all the factory and your assembly connections.
- * If a portion of a section does not light, check for loose lamps or missing mini lamps or fuses. Check that the connector on the plug adapter is fully secured.

Trouble shooting Tips (Continued)

- * The LED reflectors are not removable.
- * The LED are not replaceable.

Most Frequently Asked Questions

Q. Can I add a lighted decorative tree top to my tree?

A. Yes, There is an outlet at the back of the bladed plug of the tree top.

Q. Can I put blinking or flashing bulbs on my tree?

A. No

Q. Can I add extra string sets to my pre-lit tree?

A. No

Q. Can I put my pre-lit tree outside?

A. No. Pre-lit trees are for indoor use only.

Q. Can I hang glass ornaments on a pre-lit tree?

A. Yes, however do not hang directly on the wires of the lights.

Q. Can I remove a light string bulb and add a pig tailed illuminated or animated ornament or motor?

A. No, removing the bulbs and inserting any additional device into lamp holder will cause the light set to cease to operate and may revoke the limited warranty of this product.

Tree Storage:

Remove the plug from the wall outlet. Starting from the treetop, first remove the plug from the extension cord in section B. Then untwist the securing cap to pull apart the connectors. Lift the treetop straight up from section B.

Step A: Gently and carefully fold the branches up toward the center to avoid bulb damage. Place the treetop into your original shipping carton. Next remove the plug from section B to section A. Set aside after repeating **Step A**. Then while holding the tree pole of section A, loosen the thumb screw located on the tree stand. Remove section A from the tree stand. Repeat **Step A** and place into the carton. To close the tree stand for storage, loosen thumbscrew and push the legs inward. Place tree stand and section B into the carton. Seal the carton closed.

Important: Store your carton neatly in a cool, dry location protected from sunlight to prolong the tree life and keep the light sets in working order.

Spare Parts: Your Tree includes a plastic bag containing spare steady and fuse bulbs, spare 30-amp fuses, as replacements for the lighting strings and (1) 5-amp fuse.

NOTE: The 5-amp spare fuse is ONLY to replace an open fuse in the SHORT extension cord WITHIN the tree section. The spare 7 amp fuse for the LONG extension cord at the BOTTOM of your tree is located within the plug cavity.

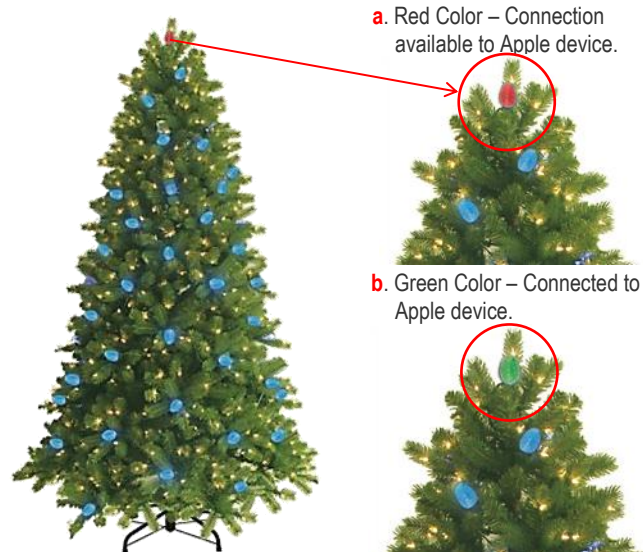
iTwinkleLight™ Operating Instructions



Just follow these quick and easy steps to set up and use your new iTwinkleLIGHT™ product.

Fully assemble the tree according to the instructions on the opposite side.

Step 1. Plug in your tree to automatically enable Bluetooth. The top G35 lamp indicates the connection status:



a. Red Color – Connection available to Apple device.

b. Green Color – Connected to Apple device.

Note: Blue color shows the product is searching for a Bluetooth device.

Step 2: With your iPad® iPhone® iPod touch®: Touch Settings, General, Bluetooth, turn **ON** to search for active devices.



Note: The effective operating range between your device and the string set is up to 33' (10m).

Step 3. Search your device to find "00680 75L Tree". Touch it.

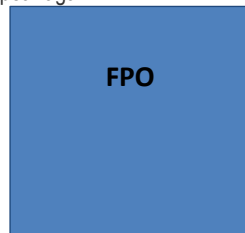
Note: To install application your device must have Internet capability (If you haven't installed the App Software).



Step 4. Once connected a window will appear prompting you to install the free App software.



Step 5. Touch 'Yes' to install. Once installed this window will not appear again.



Step 7. Once installed the iTwinkleLight icon will appear on your screen. Find it. Touch it to launch program.

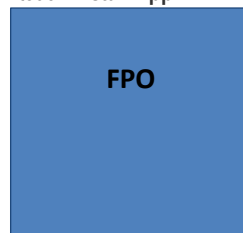


Step 9. The iTwinkleLight Main Menu appears with 4 items per screen. Scroll to select your item.

Note: A green circle shows your Apple device is connected to your product. A red dash shows your product is not connected.



Step 6. The free iTwinkleLight App appears. Touch **Free** and then touch **Install App**



Step 8. If this screen appears your Bluetooth device is available. Touch **Allow** to connect or **Ignore** to search for other devices.



Step 10. Product features screen will now appear. Touch any icon at the bottom of the screen to activate that feature.



iTwinkleLight™ Features

Note: Touch the house icon in the upper right corner to return to the iTwinkleLight Main Menu

Icon	Feature	Displays	Description
	myColor	Color Disc	Touch the circle to change colors. Slide to adjust brightness. Choose from over 2000 colors.
	Music	Music Player	Touch iTwinkle Music to enjoy 1 of 8 pre-loaded songs and light shows. Touch My Music to select songs from your iTunes music library and play songs from any country.
	Voice	Microphone	Speak... the LED lights flash to your voice. Select an icon to hear your message replayed in a child-like or Santa voice.
	Pattern	Pattern Icons	Scroll icons to select 1 of 8 programmed light shows. Note: This pattern is used for the myColor feature.
	Tap Me	Shake Icon	Tap to change color of lights. Hold the device securely; SHAKE wrist to change colors.

"Made for iPod," "Made for iPhone," and "Made for iPad" mean that an electronic accessory has been designed to connect specifically to iPod, iPhone, or iPad, respectively, and has been certified by the developer to meet Apple performance standards. Apple is not responsible for the operation of this device or its compliance with safety and regulatory standards. Please note that the use of this accessory with iPod, iPhone, or iPad may affect wireless performance.

©2013 Nicolas Holiday Inc.,
9F., No. 37, Guangfu N. Rd
Taipei, Taiwan 10560
All rights reserved

For Indoor Use Only 120 V 60 Hz
This is not a toy, for decorative use only.

To view these instructions online please visit us at www.geholidaylighting.com
or call customer support toll free at 1-877-398-7337

Holiday magic at your touch.

Scan this QR Code
with your smart
phone to learn more
about iTwinkle



Made for
iPod iPhone iPad



PRINTED IN CHINA

FP13