

# **3G tele-health modem Instruction**

**(H3G-850)**

**H3 System Co., Ltd**

< Revision Notes >

No.	Date	Version	Content	Author
1	2017. 3. 21	0.1		

## **USA-Federal Communications Commission (FCC)**

This device complies with part 15 of the FCC Rules. Operation is subject to the following two conditions: (1) This device may not cause harmful interference, and (2) this device must accept any interference received, including interference that may cause undesired operation.

This equipment has been tested and found to comply with the limits for a Class B digital device, pursuant to Part 15 of FCC Rules. These limits are designed to provide reasonable protection against harmful interference in a residential installation. This equipment generates, uses, and can radiate radio frequency energy. If not installed and used in accordance with the instructions, it may cause harmful interference to radio communications. However, there is no guarantee that interference will not occur in a particular installation.

If this equipment does cause harmful interference to radio or television reception, which can be determined by tuning the equipment off and on, the user is encouraged to try and correct the interference by one or more of the following measures:

- Reorient or relocate the receiving antenna
- Increase the distance between the equipment and the receiver.
- Connect the equipment to outlet on a circuit different from that to which the receiver is connected.
- Consult the dealer or an experienced radio/TV technician for help.

Any changes or modifications not expressly approved by the party responsible for compliance could void the user's authority to operate the equipment.

## Welcome

- Thank you for purchasing 3G tele-health modem (H3G-850).
- The 3G tele-health modem receive health data from devices such as blood pressure monitor, glucometer, and weight scale
- The 3G tele-health modem transmit them into a healthcare center through 3G(verizon) mobile network

## Packaging List

- Modem Main
- AC Adapter (5V/3A)

### 0. Overview

This document describes instructions regarding the H3 3G tele-health modem (H3G-850, H3 System) and the related components. This document includes

- How to install and configure the H3 3G tele-health modem
- How to use the H3 3G tele-health modem
- How to setup a server system for the H3 3G tele-health modems

### 1. Specification

Item	Specification		
MCU	STM32F207VC 32bit Cortex-M3		
MEMORY	Internal FLASH	256KB	
	External FLASH	1MB	
	SRAM	128KB	
RF Transceiver	15C	Freq. Range	2402.0 ~ 2480.0 MHz
		POWER	0.343mW/MHz(Typ) / Class2
		Freq. Range	
		POWER	
		Freq. Range	
		POWER	
INTERFACE	ANT	SMA Type	
	USB	OTG	
	Upgrade	4pole jack	
Operating Environment	Temperature	-10°C ~ 40°C(14 °F to 104 °F)	
	Humidity	< 90%	
POWER	Adapter	DC 5V/3A Rechargeable(Li-polymer Battery 4.2V)	

Dimension	Size	125 x 100 x 33 mm
	Weight	160g

- Available devices

- Lifescan Onetouch Ultra/Mini with Bluetooth adapter(BA-110,BA-300)
- **Weight : 160g**
- A&D weighting scale (UC-321PBT)
- A&D blood pressure monitor (UA-767PBT)
- IEM blood pressure monitor (Stabil-O-Graph)
- ForaCare's thermometer (FORA IR20b)
- Beijing Choice's Pulse Oximeter (MD300C318)
- Omron blood pressure monitor (HEM-9200T)
- Omron weighting scale (HN-290T)
- Welch Allyn blood pressure monitor (RPM-BP100)
- Welch Allyn weighting scale (RPM-Scale100)
- P1ng Pedometer (PB-001)

## 2. 3G tele-health modem installation

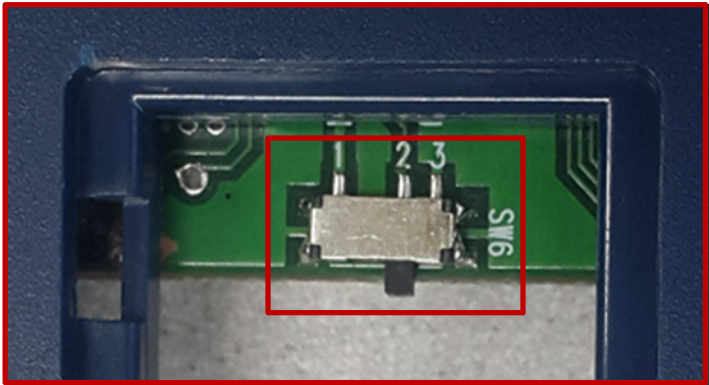
- 1) Preparation for deployment
  - A. **3G** tele-health modem configuration
    - i. Turn off the 3G tele-health modem. (Figure 1.)
    - ii. Connect a serial cable (provided by H3 System) to a 3G tele-health modem and a PC.
    - iii. Run the configuration software.
    - iv. Turn on the 3G tele-health modem.
    - v. Configure the 3G tele-health modem with the configuration software. For the details, please see the section below, "3G tele-health modem configuration."
  - B. Pairing and testing
    - i. Pair with devices. Please see "Pairing" section below. (Figure 2.)
    - ii. Take readings and confirm if the readings are successfully delivered to a server. Please see "Measurement and data transmission" section.
  - C. Final inspection
    - i. Confirm Simcard Installed
    - ii. Prepare dry cells for backup batteries.
    - iii. Close the bottom cover.
- 2) Installation at user's home
  - A. Place a 3G tele-health modem at a suitable place.
  - B. Connect a power adapter.
  - C. Insert dry cells if required.
  - D. Insert Simcard.



Figure 1. Power ON Switch



Figure 2. FW Download Console mode Selection



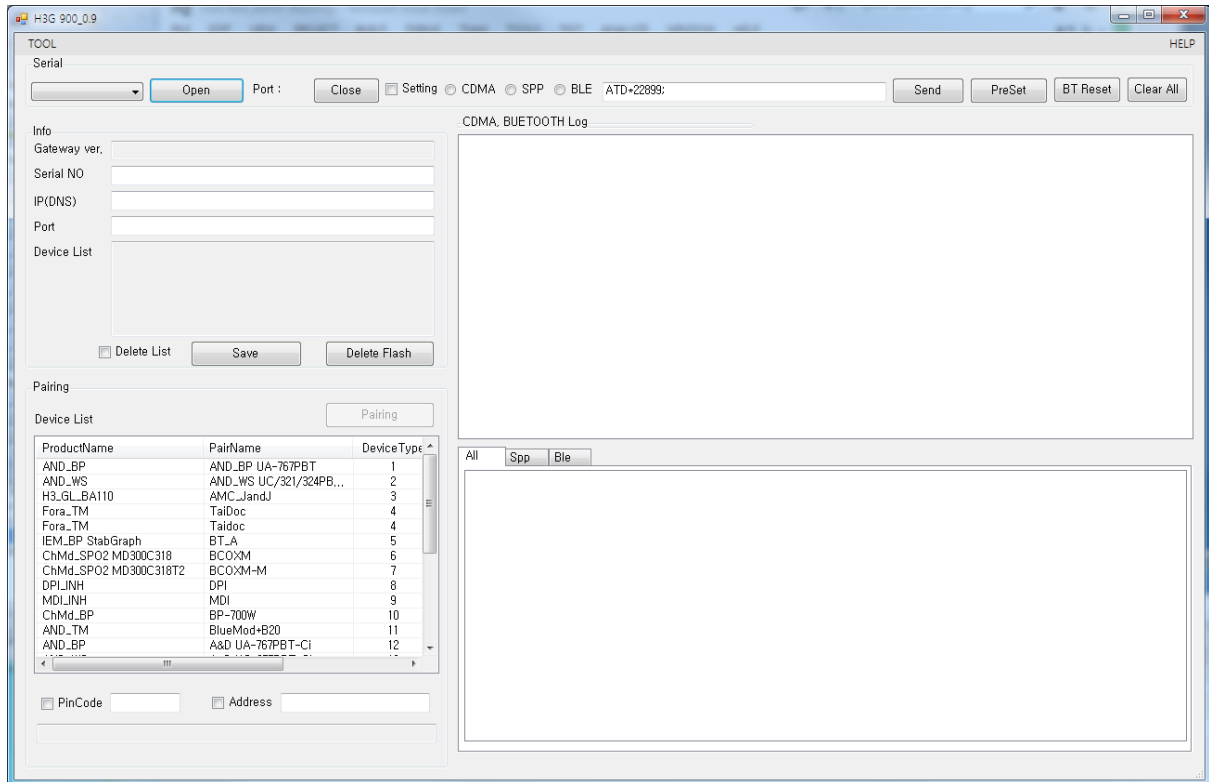
1(Booting) left  
3(Download) right

# 1. 3G tele-health modem configuration

## 1) Components

- A. A serial cable provided by H3 System
- B. Configuration software
  - i. For admin: Serial numbers can be modified.
  - ii. For user: Serial number change is not allowed.

## 2) Descriptions



A. Configuration software for an admin: Serial No. modification is enabled.

## B. Items

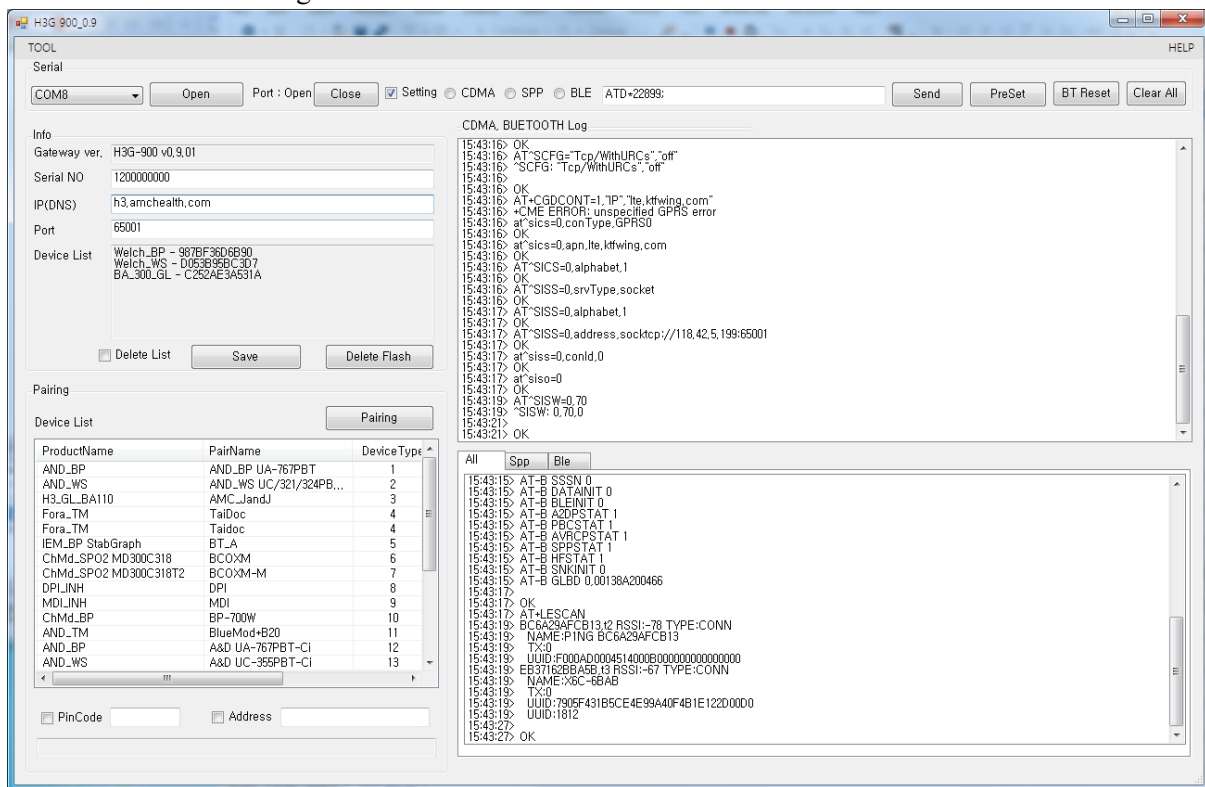
- i. Open: Open the serial port
- ii. Setting: Shall be checked for changing 3G tele-health modem configurations
- iii. Serial No: Serial number of the 3G tele-health modem. It's only enabled for the Admin version
- iv. IP(DNS): DataCollection Server IP or DNS
- v. Port: DataCollection Server port
- vi. Devices List: List of paired devices. Types and BT addresses.
- vii. Delete List CheckBox: save GWInfo, delete Pair info, Delete Saved Flash Data.
- viii. if Setting Checkbox Check and Check CDMA,SPP,BLE Radio Button : Send, Rreset AT Command to individual module.
- ix. Clear Button: Clear window
- x. 3G, Bluetooth Log listbox shows GW log data



- xi. 3G Log: 3G AT-command logs  
. Save Folder : C:\log
- xii. Menu :  
NetworkPairing submenu : Network Pairing Management UI  
FirmWare submenu : FOTA File Generate Management UI

3) Steps

- A. Turn off the 3G tele-health modem.
- B. Connect a serial cable (provided by H3 System) to a 3G tele-health modem and a PC.
- C. Run the configuration software.
- D. Select the suitable COM port (You can check the COM port at the device manager.) and click “Open.”
- E. If you want to modify configuration, then check “Setting.” Otherwise uncheck “Setting.”



- F. Turn on the 3G tele-health modem.
- G. The current configuration and paired devices info are shown.
- H. Change the parameters and click “Send.”
- I. If you want to delete the pairing info, check “Delete List” and click “Send.”
- J. Before clicking “Send”, please double check the settings.
- K. Turn off the 3G tele-health modem and disconnect the serial cable.

2. Pairing

- 1) Pairing (Figure 2.)

- A. Admin UI Pairing mode
- B. Network Pairing mode
- 2) Admin UI Pairing mode
  - A. General process
    - i. Turn on the 3G tele-health modem.
    - ii. When 3G tele-health modem turns on, 3G tele-health modem shows the number of currently paired devices with LEDs for 5 seconds. **(Even at the mode “N”)**

Number of paired devices	SENDING LED	READING LED
0	Off	Red On
1	Green On	Off
2	Green On	Green On
3	Green On	Red On
4	Red On	Off
5	Red On	Green On

- iii. AdminUI Setting CheckBox check
- iv. CDMA, Bluetooth Log listbox log scroll will stop and pairing standby
- v. Let the device be at pairing mode.
- vi. In the Pairing Device List listview, Select record and click Pairing button
- vii. Pairing will start
- viii. During pairing process, the “Readings” LED turns GREEN.
- ix. At successful pairing, the “Readings” LED blinks GREEN 5 times.
- x. At successful Admin UI Info Device List listbox will add pair info.
- xi. At failure, the “Readings” LED blinks RED 5 times.
- xii. **The 3G tele-health modem goes to the step “v.”**
- xiii. **You can pair another device at the same pairing mode successively.**
- xiv. **After completion of pairing, UnCheck AdminUI Setting CheckBox, 3G tele-health modem will normal operation.**
- xv. **For failure, just let the device at pairing mode and find the result. (Step “vii” and “viii”) Don’t turn off the 3G tele-health modem and restart the whole procedure again.**

- 3) Network Pairing mode
  - A. Prepare
    - 1. AMC or patient requests BT device pairing with target GW and BT device information.  
(H3G-850(GW), target Bluetooth (BT) device).
    - 2. AMC confirms the corresponding information and registers the information into AMC’s DB.  
(btaddress. Serial, Pincode, devtype)
    - 3. AMC can register several BT device.
  - B. Pairing
    - 1. AMC turns on the pairing start flag of the relevant DB record.
    - 2. GW Network Pairing(NP) process.
      - AMC asks the patient to restart the patient’s GW.
      - Patient checks the GW's standby mode by looking at the LED light.
      - AMC instructs the patient to make the BT device be at pairing mode.
    - 3. GW's LED indicates the pairing status.

4. After completion, GW's LED indicates whether the pairing succeeds or fails.
5. GW automatically updates the pairing results into AMC's DB through DC SW.
6. AMC checks whether the process is successfully completed through AMC's DB.
7. If register several BT device, AMC has to guide Patient set BT device in pairing mode sequentially,

C. Final

1. AMC can find out all BT device pairing is completed via DB info
2. AMC confirms whether the Bluetooth device is functioning properly.

### **3. Measurement and data transmission**

- 1) How to use
  - A. Take a reading, and then the reading is transmitted to the 3G tele-health modem by Bluetooth.
  - B. And the reading is automatically transmitted to the server via mobile networks.
  - C. At server access failure, it tries 9 more times, in total 10 times at most with 1 hour period until success.
- 2) Clock setup
  - A. Clock of the 3G tele-health modem is automatically set with 3G connection.
  - B. Clocks of measuring devices can be set during communication with the 3G tele-health modem.
  - C. But, regarding the IEM's blood pressure monitor, clock must be set manually.
- 3) LED indications
  - A. During Bluetooth communication, the "Readings" LED turns GREEN.
  - B. At success, the "Readings" LED blinks GREEN 5 times.
  - C. At failure, the "Readings" LED blinks RED 5 times.
  - D. During server connections, the "Sending" LED turns GREEN.
  - E. At success, the "Sending" LED blinks GREEN 5 times.
  - F. At failure, the "Sending" LED blinks RED 5 times.
- 4) Notification for power failure
  - A. The 3G tele-health modem is supposed to connect to a server when an AC adapter is connected and disconnected.
  - B. It sends "Power up" and "Power down" signals, respectively.
  - C. Backup batteries are required.
- 5) Heart beat
  - A. Server access is taken every six hours for indication "I'm alive."
  - B. If there is any reading unsent, the reading is sent to a server together.

#### 4. Data collection software

##### 1) Setup

###### A. Default path :

C:\Program Files\H3SYSTEM\DataCollection\_GPRS\DataCollection\_GPRS.exe

###### B. Configuration file name: gprs\_config.ini

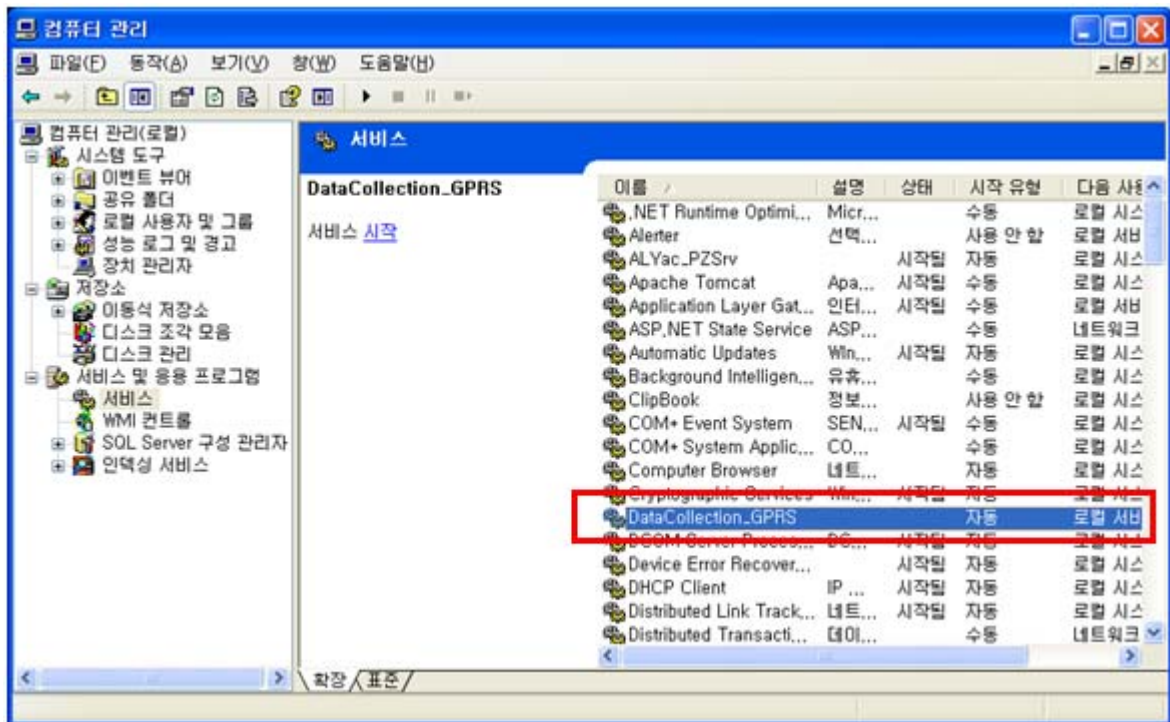
###### C. Contents of configuration file (gprs\_config.ini)

- i. LOG\_PATH=C:\gprs\log <= Log file path
- ii. DATA\_PATH=C:\gprs\data <= Data XML file path
- iii. PORT=65001 <= TCP/IP port

###### D. Change of configuration

- i. Stop the corresponding windows service
- ii. Change the configuration file, gprs\_config.ini
- iii. Re-start the windows service

###### E. To start the windows service: At “Windows Service”, select “DataCollection\_GPRS” and run.



##### 2) Data files and communication log files

###### A. Data XML files will be generated at the folder defined at “DATA\_PATH.”

###### B. Log files will be generated at the folder defined at “LOG\_PATH.”

###### C. Examples

Ex) Data XML file name: H3\_20101004194422\_111111111.xml

Creation logic of xml file name: Datetime + 3G tele-health modem serial no

Ex) Log file name: H3\_20101004194422\_156.log

Creation logic of log file name: Datetime

#### 5. XML file

```

<?xml version="1.0" encoding="utf-8"?>
<Measure serial="1111000002" dc="1" battery="1.2">
  <Info servertime="20111221132941" gwtime="20111221132941" sim="310260760561444"
  fw="H3G-700 v1.0.28" signal="99.99" />
  <Device type="Pressure_AND">
    <Data id="5080600120" measuretime="20111109132941" sys="155" dia="98" pul="77"
    battery="2.63"
    con_gwtime="20111221132941" con_devtime="20111221132941" />
  </Device>
  <Device type="Weight">
    <Data id="2222222201" measuretime="20110901142303" result="068.60" unit="kg"
    battery="2.3"
    con_gwtime="20111221132941" con_devtime="20111221132941" />
  </Device>
  <Device type="Glucose">
    <Data id="ZH33064BY" measuretime="20111109142303" result="463" unit="0" model="1"
    adapter="1"
    con_gwtime="20111221132941" con_devtime="" />
  </Device>
  <Device type="Glucose">
    <Data id="ZH33064BY" measuretime="20111109142303" result="463" unit="0" model="1"
    adapter="2" battery="3.0" con_gwtime="20111221132941" con_devtime="" />
  </Device>
  <Device type="Thermometer">
    <Data id="00123E0019B5" measuretime="20100101001000" otemp="97.88" btemp="83.66"
    unit="F" />
  </Device>
  <Device type="Pressure_IEM">
    <Data id="61102DM2" measuretime="20110215151641" sys="157" dia="100" pul="091"
    con_gwtime="20111221132941" con_devtime="20111221132941" />
  </Device>
  <Device type="OXI">
    <Data id="0018E41E7B7F" measuretime="20100116012117" pid="001" temp="000" pr="075"
    spo2="90"
    battery="10" con_gwtime="20111221132941" con_devtime="" />
  </Device>
  <Device type="OXI">
    <Data id="0018E41E7B7F" measuretime="20100116012117" pid="001" temp="000" pr="075"
    spo2="90" battery="10" />
  </Device>
</Measure>

```

Item		Description
Common	serial="2222222222"	3G tele-health modem Serial No

	dc="0"	Power Adapter Connection Status ( 0 : Connected ,1 : unconnected)
	battery="1.2"	3G tele-health modem battery
	type="glucose"	Device - Glucose : Glucometer - Pressure_AND : Blood pressure(AND) - Pressure_IEM : Blood pressure(IEM) - Weight : weight scale(AND) - Thermometer : Thermometer - OXI : Pulse Oximeter
	id="ZH306CBY"	Device Serial No
	measuretime="20100101001250"	Measurement time
	con_gwtime="20111221132941"	3G tele-health modem's time stamp during communication between the measuring device and 3G tele-health modem
	con_devtime="20111221132941"	Measuring device's time stamp during communication between the measuring device and 3G tele-health modem (If the measuring device supports sending device's current time)
Glucometer	result="103"	Measurement value
	unit="0"	Unit (0 : mg/dL, 1 : mmol/L)
	model="1"	Glucometer Model (0:Ultra, 1:Ultra2, 2:Mini/Easy)
	adapter="1"	Glucometer Adapter (0 : N/A, 1: BA-100, 2: BA-110)
	battery="3.0"	Battery level (only for BA-110)
BP Monitor (AND)	sys="139"	Systolic
	dia="091"	Diastolic
	pul="094"	Pulse rate
	battery="2.63"	Battery
Weight Scale	result="066.80"	Measurement value
	unit="kg"	Unit (kg or lb)
	battery="2.32"	Battery
Thermometer	otemp="98.42"	Object Temperature (Body temperature)
	btemp="74.84"	Back-ground temperature (Outside temperature)
	unit="F"	Unit (F : Fhar)
BP Monitor (IEM)	sys="157"	Systolic
	dia="100"	Diastolic
	pul="091"	Pulse rate
Oximeter	pid="001"	PID
	temp="000"	Temperature
	pr="075"	Pulse rate
	spo2="90"	Spo2
	battery="10"	Battery level (Unit: %) 10 for less than 10%

<p>3G tele-health modem information</p>	<pre>&lt;Info servertime="20111221132941" gwtime="20111221132941" sim="310260760561444" fw="H3G-700 v1.0.28" signal="99,99" /&gt;</pre>	<p>servertime: timestamp of DataCollection Server during communication between 3G tele-health modem and server</p> <p>gwtime: timestamp of 3G tele-health modem during communication between 3G tele-health modem and server</p> <p>sim: SIM card ID including carrier info</p> <p>fw : 3G tele-health modem firmware version</p> <p>signal: signal strength (format : signal="rssi,ber")</p>
---	---	---