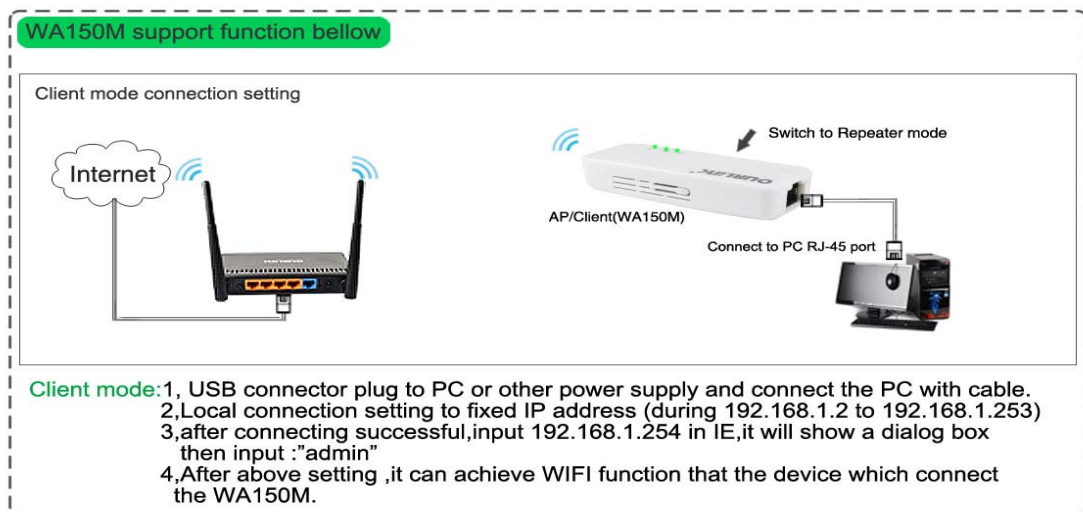


# **WA150M WIRELESS CLIENT**

## **User Manual**

When the Mode Switch is shift to Repeater, the working mode is in Client Mode. The diagram below illustrates a typical client configuration.



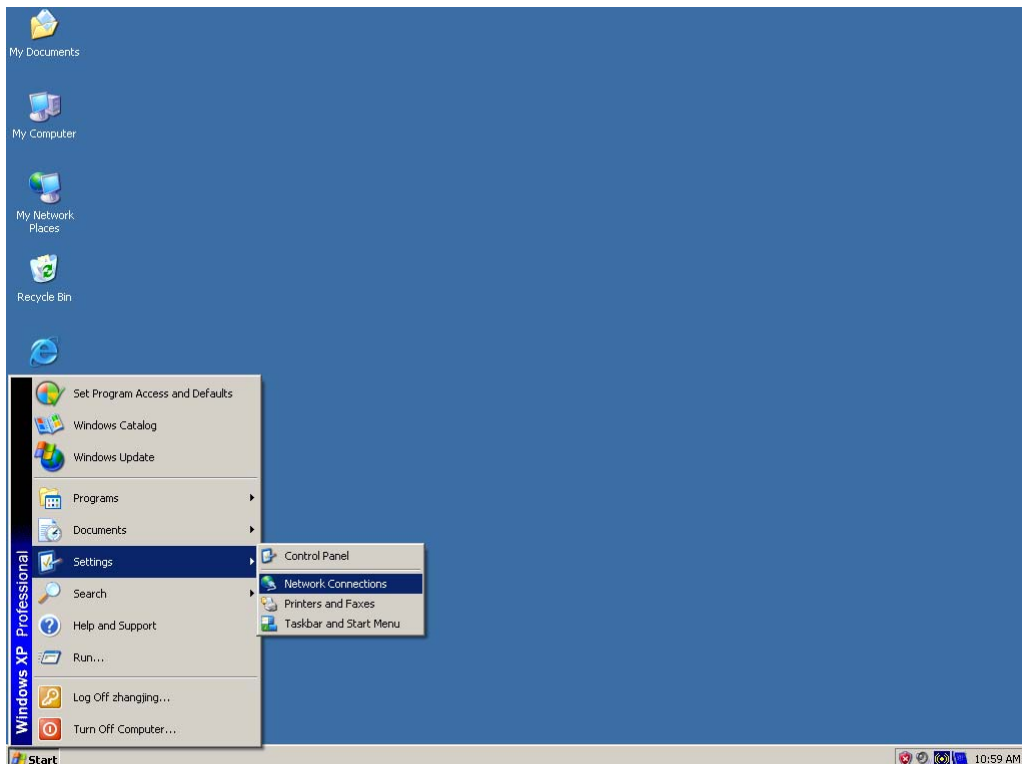
Please see below for detail information

## 1 .Connecting Device

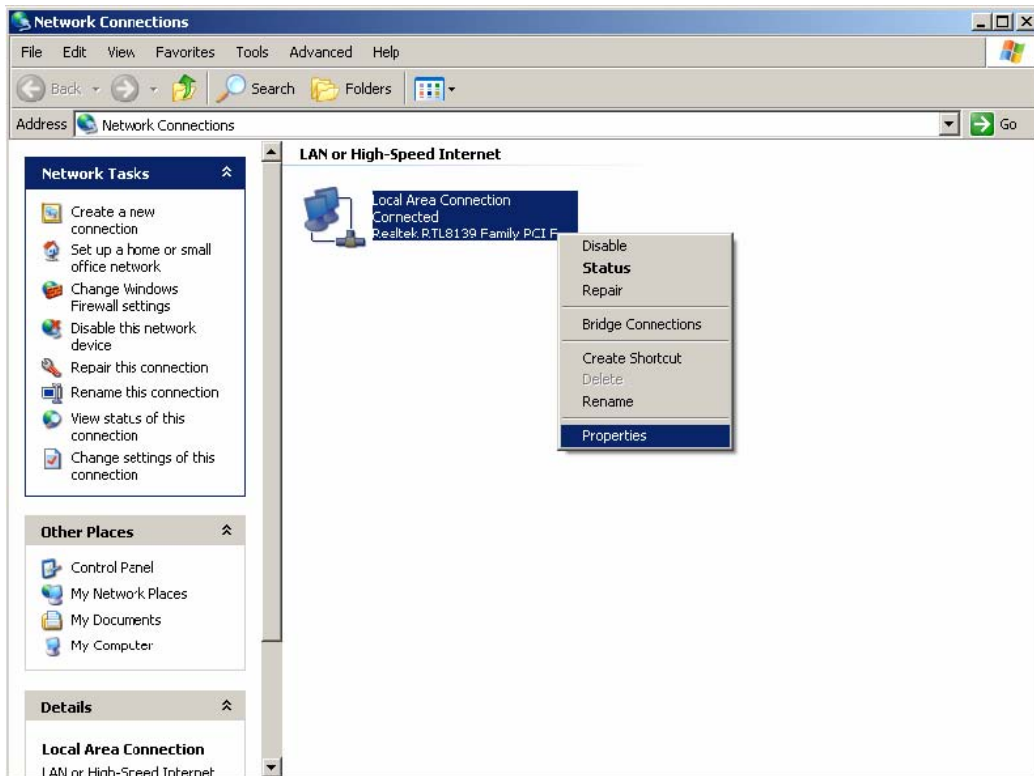
Device's usb port connect to the PC or other DC5V power supply and device's ethernet port connect to the PC with ethernet cable.

## 2. Configure Computer

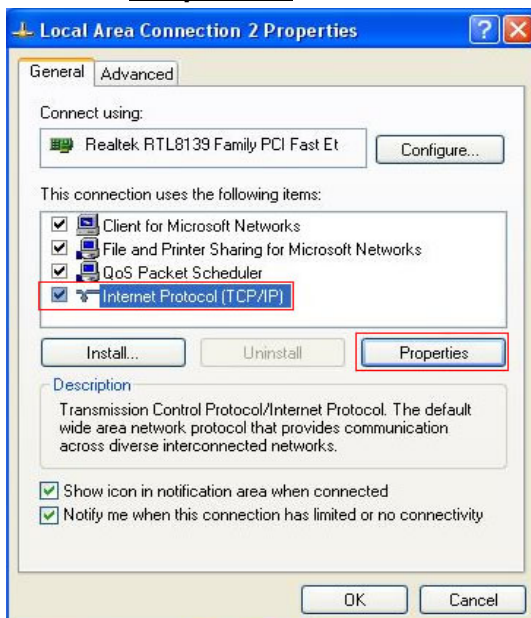
Follow the instructions below to configure a computer running Windows XP:  
 1). From the **Start** menu on your desktop, go to **Settings**, and then click on Network Connections.



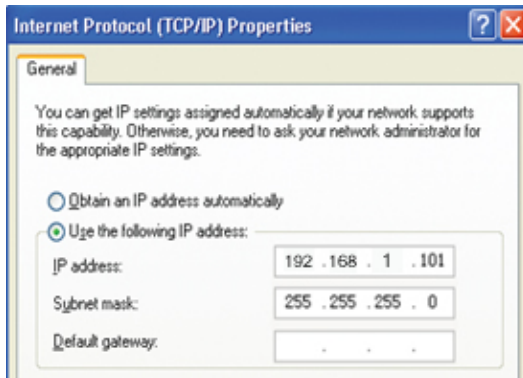
2). In the **Network Connections** window, right-click on **Local Area Connection**, then click **Properties**.



3). In the **General** tab of **Local Area Connection Properties**, Click **Internet Protocol (TCP/IP)** under "This connection uses the following items:". Then click on the **Properties** button.



4).Select "**Use the following IP address**" by clicking the radio-button.



In the IP address field, enter the address **192.168.1.x** (x should be replaced by a number between 2 and 253, such as 101). In the Subnet mask field, enter **255.255.255.0**

### 3. Login

Input the website <http://192.168.1.254> in Internet explorer address column, User should see the login page, input the user name and password (default user name and password is "**admin**"),login windows as below:



click "**OK**" button enter the main page

### 4. Connect to the AP/Router

[open all](#) | [close all](#)

- Router
  - Setup Wizard
  - Operation Mode
  - Internet Settings
  - Wireless Settings
  - Administration

## Repeater Feature

You could configure Repeater parameters here.

Wireless Network						
Network Name(SSID)		POCKET 3G				
Ap List						
	Channel	SSID	BSSID	Single	Security	Wifi Mode
<input type="radio"/>	1	office	00:0c:43:50:00:18	44	WPAPSK/TKIP	11b/g/n
<input type="radio"/>	6	HLY	00:e0:4c:81:96:c1	70	WPA2PSK/AES	11b/g/n
<input type="radio"/>	6	QA300M	00:e0:4c:81:96:b1	39	NONE	11b/g/n
<input type="radio"/>	6	VAP1	00:e0:4c:81:96:c2	70	WPAPSK/AES	11b/g/n
<input type="radio"/>	11	GeckoLAN	00:e0:4c:00:05:e1	70	NONE	11b/g/n
<input type="button" value="ReScan"/>						

Repeater Parameters	
Channel	1
Root SSID	
BSSID	
Security	Open
Encryption Type	None
WEP Default Key	Key 1
WEP Keys	WEP Key 1 : <input type="text"/> Hex
	WEP Key 2 : <input type="text"/> Hex
	WEP Key 3 : <input type="text"/> Hex
	WEP Key 4 : <input type="text"/> Hex
<input type="button" value="Connect"/> <input type="button" value="Cancel"/>	

**Ap List:** Display nearby wireless devices, Click **ReScan** refresh the list. Choose your current list of wireless router and Click the **Connect** button to connect.

If your wireless AP/Router has security setting, need to enter a router's wireless password, then click **Connect**.

## **FCC STATEMENT**

1. This device complies with Part 15 or the FCC Rules.

Operation is subject to the following two conditions:

- (1) This device may not cause harmful interference, and
  - (2) This device must accept any interference received, including interference that may cause undesired operation.
2. Changer or modifications not expressly approved by the party responsible for compliance could void the user's authority to operate the equipment.

### **FCC Radiation Exposure Statement:**

The device has been evaluated to meet general RF exposure requirement.

The device can be used in portable exposure condition without RF striction.

**NOTE:** This equipment has been tested and found to comply with the limits for a Class B digital, pursuant to Part 15 or the FCC Rules. These limits are designed to provide reasonable protection against harmful interference in a residential installation. This equipment generates, uses and can radiate radio frequency energy and, if not installed and used in accordance with the instructions, may casue harmful interference to radio communications, However, there is no guarantee that interference will not occur in a particular installation. If the equipment does cause harmful interference to radio or television reception, which can be determined by turning the equipment off and on, the user is encouraged to try to correct the interference by one or more of the following measures:

- Reorient or relocate the receiving antenna.
- Increase the separation between the equipment and receiver.
- Connect the equipment into an outlet on a circuit different from that to which the receiver is connected.
- Consult the dealer or an experienced radio/ TV technician for help.

### **FCC Radiation Exposure Statement:**

The device has been evaluated to meet general RF exposure requirement.

The device can be used in portable exposure condition without RF striction.