

STAR WARS

THE CLONE WARS™

Jedi™ COMMUNICATORS

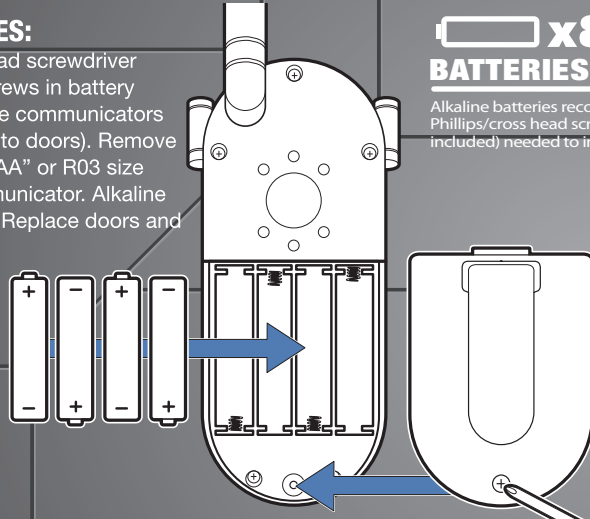
Frequency: 27.145 MHz

AGES 4+

97815

TO INSERT BATTERIES:

Using a Phillips/cross head screwdriver (not included), loosen screws in battery compartment doors in the communicators (screws remain attached to doors). Remove doors. Insert 4 x 1.5V "AAA" or R03 size batteries into each communicator. Alkaline batteries recommended. Replace doors and tighten screws.



x8 1.5V AAA or R03 size
BATTERIES REQUIRED
NOT INCLUDED

Alkaline batteries recommended.
Phillips/cross head screwdriver (not included) needed to insert batteries.

IMPORTANT: BATTERY INFORMATION



CAUTION:

1. As with all small batteries, the batteries used with this toy should be kept away from small children who still put things in their mouths. If they are swallowed, promptly see a doctor and have the doctor phone (202) 625-3333 collect. If you reside outside the United States, have the doctor call your local poison control center.
2. Always follow the instructions carefully. Use only batteries specified and be sure to insert them correctly by matching the + and - polarity markings.
3. Do not mix old batteries and new batteries or standard (carbon-zinc) with alkaline batteries.
4. Remove exhausted or dead batteries from the product.
5. Remove batteries if product is not to be played with for a long time.
6. Do not short-circuit the supply terminals.
7. Should this product cause, or be affected by, local electrical interference, move it away from other electrical equipment. Reset (switching off and back on again or removing and re-inserting batteries) if necessary.
8. RECHARGEABLE BATTERIES: Do not mix these with any other types of batteries. Always remove from the product before recharging. Recharge batteries under adult supervision. DO NOT RECHARGE OTHER TYPES OF BATTERIES.

ARTECH
Solution of Graphics Communication

Customer Code: 5008/97815_SW_communicators.indd
2009-10-0343/Tomy/2009-10-30/EP1_CT_Coated

瀛能設計制作(深圳)有限公司
www.artechgraphics.com.hk | info@artechgraphics.com.hk | Tel 755-3322 8070

K

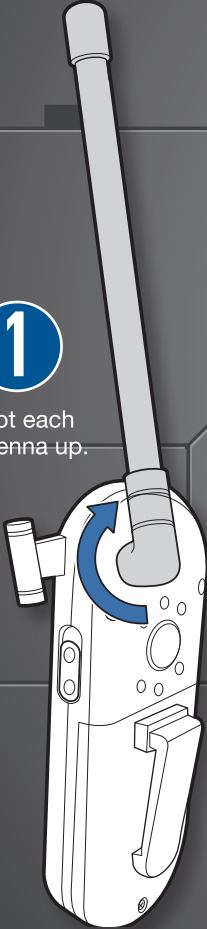
294

294

OPERATION

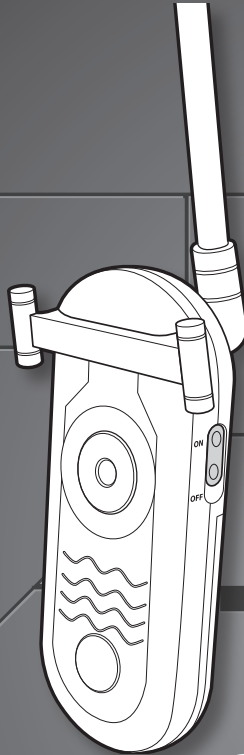
1

Pivot each antenna up.



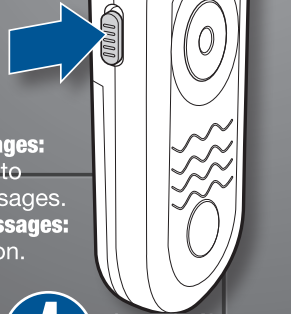
2

Slide **ON/OFF** switch on each communicator to **ON**.



3

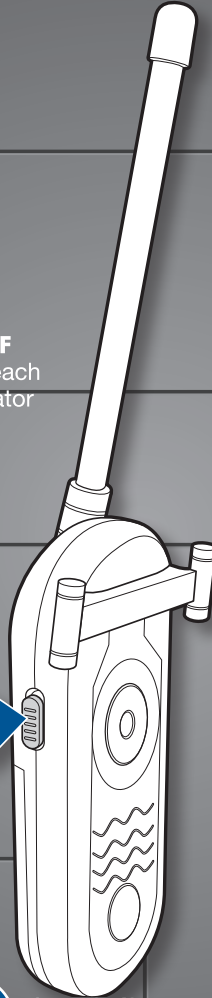
To send messages:
Press button to transmit messages.
To receive messages:
Release button.



NOTE: For best results do not touch antenna while sending or receiving messages.

4

Slide **ON/OFF** switches to **OFF** when not using communicators.



FCC Statement:

This device complies with part 15 of the FCC Rules. Operation is subject to the following two conditions: (1) This device may not cause harmful interference, and (2) this device must accept any interference received, including interference that may cause undesired operation.

"Caution: Changes or modifications to this unit not expressly approved by the party responsible for compliance could void the user's authority to operate the equipment.



NOTE TO UK CONSUMERS: This product and its batteries must be disposed of separately at your local waste recycling centre. Do not dispose of in your household waste bin.



Product and colors may vary.
© 2010 Lucasfilm Ltd. & © or TM where indicated.
All rights reserved.
®* and/or TM* & © 2009 Hasbro. All Rights Reserved.
TM & © denote U.S. Trademarks.



Not suitable for children under 3 years because of small parts — choking hazard.

P/N 701782000

ARTECH
Solution of Graphics Communication

Customer Code: 5008/97815_SW_communicators.indd
2009-10-0343/Tomy/2009-10-30/EP1_CT_Coated

灑能設計制作(深圳)有限公司
www.artechgraphics.com.hk | info@artechgraphics.com.hk | Tel 755-3322 8070

K

294

294