

Desktop PC Series

User's Guide

Welcome! Thank you for purchasing the desktop PC. You will find yourself quickly at ease and full of control using the desktop PC by reading the user's guide carefully. It will help you get started using the new PC right away.

This guide provides you with the information of steps of "Setting up the PC", basic operation, software and hardware setup, safe precautions and the trouble-shooting help and so on. We have tried our best to make the guide easily understood and overall. Before using your computer for the first time, it will be helpful to read all the materials of it.

Notes, Notices and Cautions

Note: A **NOTE** indicates important information that helps you use your computer better.

Notice: A **NOTICE** indicates either potential damage to hardware or loss of data and tells you how to avoid this kind of problems.

Caution: A **CAUTION** indicates potential situations of property loss, bodily injury, or even death.

Changes or modifications not expressly approved by the party responsible for compliance could void the user's authority to operate the equipment.

SHENZHEN HASEE COMPUTER CO., LTD

Model No. : D400P

FCC ID : V3KHCD86895TSDL

This device complies with part 15 of the FCC rules.

Operation is subject to the following conditions:

- (1) This devices may not cause harmful interference, and
- (2) this device must accept any interference received including interference that may cause undesired operation.

DECLARATION:

The information in this user's manual is subject to change without notice.

The manufacturer or reseller shall not be liable for errors or omissions contained in this guide and shall not be liable for any consequential damages, which may result from the performance or use of this guide.

All rights reserved.

Thank you!

TABLE OF CONTENTS

- 1. Safety Instructions and Information of Your Computer**
- 2. Setting Up and Using Your Computer**
- 3. Safety & Comfort Guide**
- 4. Guide of the computer system optimization**
- 5. General Troubleshooting and solutions**

1. Safety Instructions and Information of Your Computer

1.1 Safety Instructions

Use the following safety guidelines to help ensure your own personal safety and to help protect your computer and working environment from potential damage.

- Read all the relevant documents about your computer. If there are insert pages, please read it firstly.
- To help prevent electric shock, plug the computer and device power cables into properly grounded electrical outlets. These cables are equipped with 3-prong plugs to help ensure proper grounding. Do not use adapter plugs or remove the grounding prong from a cable. If you must use an extension cable, use a 3-wire cable with properly grounded plugs.
- To help avoid the potential hazard of electric shock, do not connect or disconnect any cables or perform maintenance or reconfiguration of this product during an electrical storm.
- Before you move your computer, disconnect the computer from the electrical outlet.
- To help avoid possible damage to the system board, wait 5 seconds after turning off the computer before disconnecting a device from the computer.
- To avoid damage to your operation system, motherboard and hard disk, do not push the power and reset button constantly. Do not cut the power unexpectedly, or it will damage the system.
- Do not attempt to service the computer yourself unless you are a trained service technician. Always follow installation instructions closely.
- Clean your computer with a soft cloth dampened with water. Do not use liquid or aerosol cleaners, which may contain flammable substances.
- Keep your computer away from radiators and heat sources. Do not push any objects into the openings of your computer. Doing so can cause fire or electric shock by shorting out interior components.
- **Warning:** There is a danger of a new battery exploding if it is incorrectly installed. Replace the battery only with the same or equivalent type recommended by the manufacturer. Do not dispose of the battery along with household waste. Contact your local waste disposal agency for the address of the nearest battery deposit site.

1.2 Information of Your Computer

Please check out the items of product specification before you set up your computer.

Product Name:

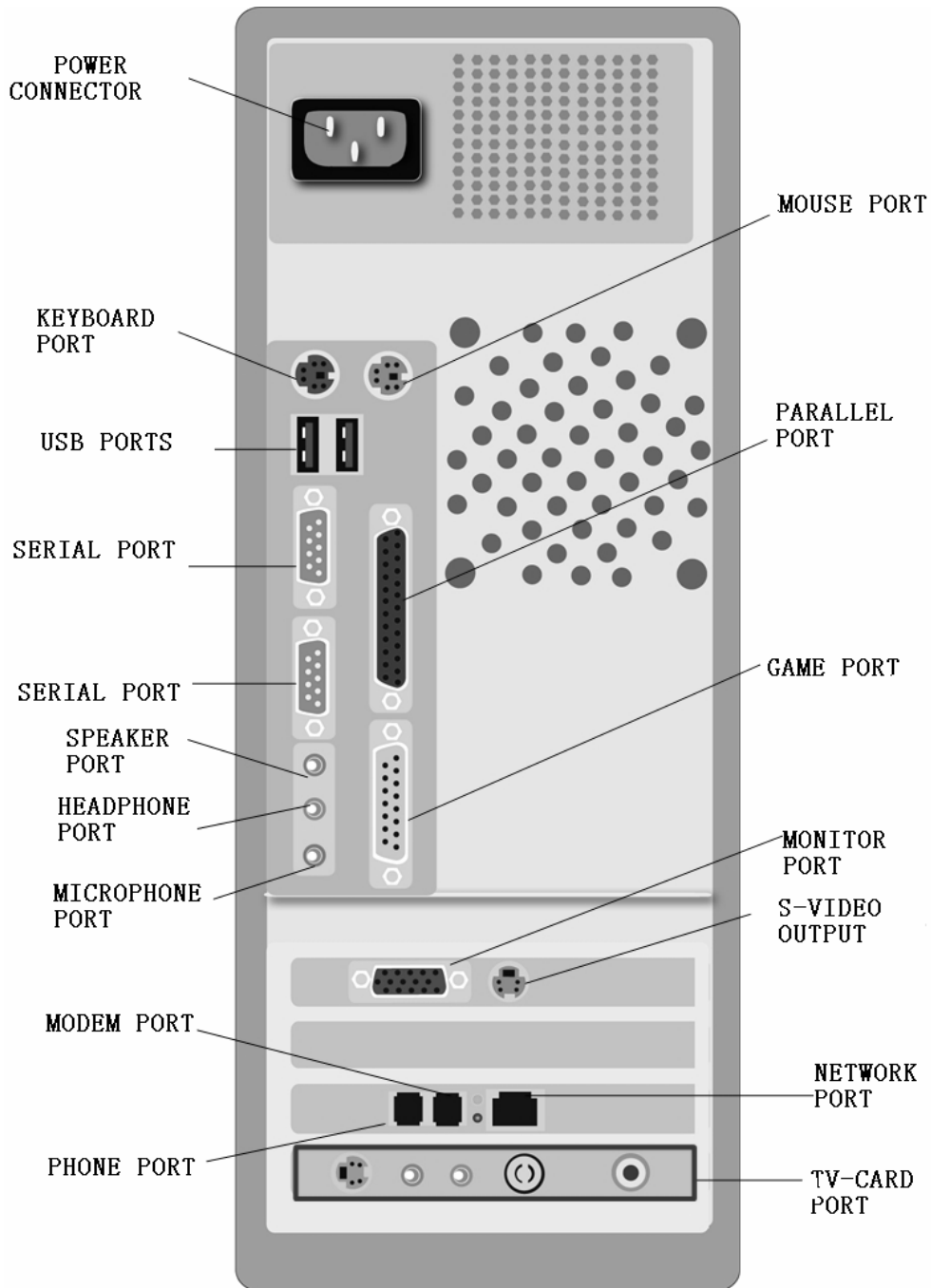
Desktop PC

Product Components:

Please read the product specification.

2. Setting up the Computer

2.1 Connecting the Computer



Follow the setup poster to set up your computer. The locations and the colors follow as PC99 model. Match the colors to connect the components.

Keyboard	Pale Purple	Mouse	Green(PS/2)
Audio-amplifier/ Earphone	Pale Green	Microphone	Pink
Line In	Blue	USB	Black
Parallel	Mauve	Game Port	Golden Yellow

Note:

1. The number of connectors may vary by the PC specification. The items such as the TV card and the network interface adapter may not be provided with your PC.
2. Locations and directions of some models may be different from the picture. It will not affect the normal setup and using of your computer.
3. Connect the power at last.
4. Connect AUDIO-OUT on the TV card to LINE-IN on the audio card when setting up the TV card.
5. The product is subject to material object, the product specification is subject to change without notice.

2.2 Driver Installation Guide (reference for your installation by yourself)

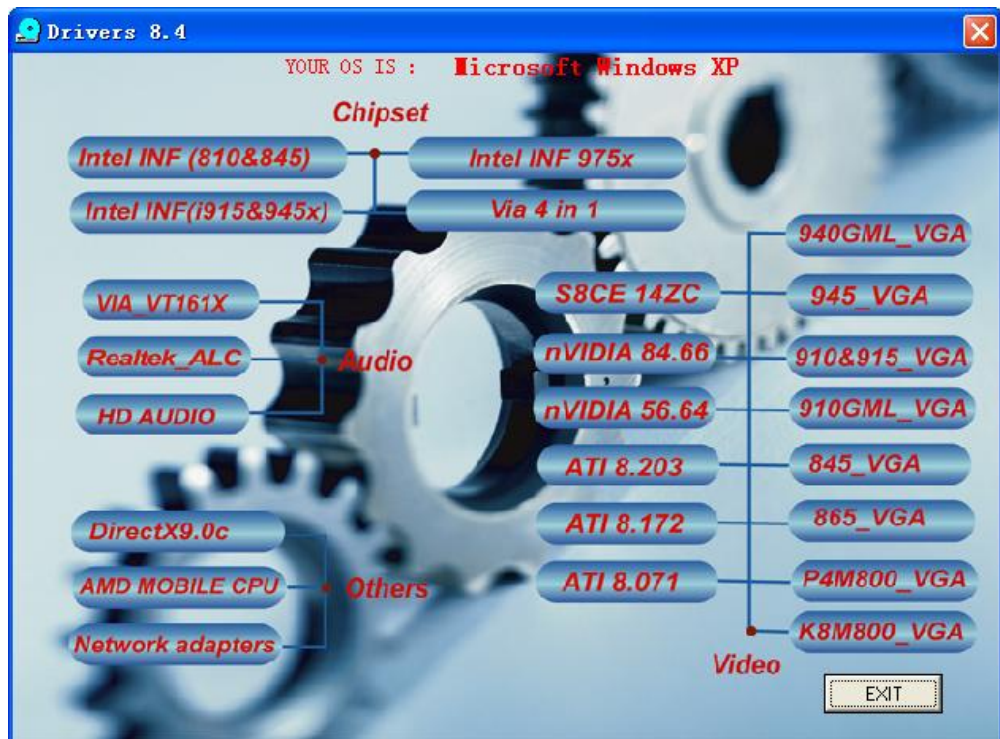
You must install the driver after your completing installation of OS. Please follow the steps below: (for example: driver installation for Windows XP)

2.2.1 OS Installation

You can install the OS what you need. Format your disk and install new OS.

2.2.2 Show the Setup Screen

Insert the attached CD into the CD-ROM drive. The auto run program screen will appear as follow: (If there is no such screen, please double click "My Computer" and click right button on CD-ROM icon to choose play automatically)



Notice: There will be some differences from the actual screen because of different OS and driver updating.

2.2.3 Motherboard Driver Installation

Please select the relevant driver with your motherboard model.

For example: ①VIA chipset(P4M-E PRO(P4X266E)、P4X400、4V5DM(P4X533)、HA-P4M800-ML、HA-P4X800-ML、HA-P4M800PRO-ML、HA-P4M800n-ML、HA-K8T890-ML、HA-K8T890-L、HA-K8T800-ML、HA-K8M800-ML and so on): You must install the driver of “**VIA 4in 1**”.

②INTEL810、845 serial chipset: You must install “ **Intel INF (810&845)** ” for 810T、845GL、845GV、845PE and so on. Install “**Intel INF(i915&945X)**”for INTEL 865、i915&925x、i945 serial. Install “**Intel INF 975X**”for INTEL 975 serial.

Note: some VIA chipset motherboards need to install SATA drive, you can searching the driver at: **X:\DRIVER\VIA_BOARD\SATA\setup.exe**.

Because of the constant updating of driver and chipset, the interface content and setup methods may be different. Please ask professional technician for help for any questions during using your computer.

2.2.4 DirectX Installation

This installation will be helpful for operating game and multimedia.

After resetting, open the setup screen again (refer to step 2.2.2). Click **DirectX9.0c** , when the auto run program shows the setup screen. Follow the on-screen instructions to complete the installation. Windows XP+ SP2 system can auto-provide the drive of **DirectX9.0c**, you need not to install it.

2.2.5 Graphics Card Driver Installation

Open the setup screen again. Please select the relevant driver according to your graphics card model.

Install driver of the unattached graphics card:

①S8CE series graphics card: **S8CE 14ZC**

②nvidia graphics card (AGP graphics card): **nVIDIA 56.64**

nvidia graphics card (PCIE graphics card): **nVIDIA 84.66**

③ATI graphics card (AGP graphics card): **ATI8.071**

ATI graphics card (PCIE graphics card :X300、X550、X700): **ATI8.172**

ATI graphics card (PCIE graphics card :X1300、X1600、X1800): **ATI8.203**

Install driver of the integrated graphics card:

④INTEL940GML、945GM(motherboard chipset): **940GML_VGA**

INTEL945G (motherboard chipset): **945_VGA**

INTEL910、915GV (motherboard chipset): **910&915_VGA**

INTEL910GML、915GM (motherboard chipset): **910GML_VGA**

INTEL845G/GE/GL/GV(motherboard chipset): **845_VGA**

INTEL865 (motherboard chipset): **865_VGA**

⑤HA-P4M800-ML、HA-P4M800N-ML、HA-P4M800PRO-ML(motherboard chipset):**P4M800_VGA**

⑥K8M800 (motherboard chipset): **K8M800_VGA**

2.2.6 Audio Card Driver Installation

Please select the relevant driver according to your audio card model.

You can select “**Via_VT161X**” for Via_VT1617 or “**Realtek_ALC**” for Realtek_ALC or “**HD AUDIO**” for ALC880/ALC260/ALC861.

2.2.7 AMD MOBILE CPU Driver Installation

If your PC is K8 series, you need install the AMD Mobile CPU Driver. Open the setup screen again, then select the AMD Mobile CPU Driver.

2.2.8 USB2.0 Driver Installation

We suggest user install Windows XP + SP1 or Windows XP + SP2,system can auto-identify the drive device of USB2.0

2.2.9 LAN card Driver Installation (optional)

Searching the driver at: **X: \Driver\NETCARD**. System will identify the device if your OS is Windows XP. Select relevant catalogue according to your LAN card model, then select relevant OS catalogue.

Note: It is normal to find that the speed of starting system become slower after the LAN card setup.

2.2.10 Keyboard Driver Installation

The keyboard with multimedia button has partial button to installation driver.

(For instance: JME-5111P, searching at: **X:\ DRIVERS\ Keyboard\JME-5111P.**)

Note:

1. Installation for Windows XP: Click **Continue** when the installation program show **Not Certified by Microsoft**.
2. The setup screen will be changed because of driver updating. It will not affect the setup.
3. Check the items as the product specification, and install the relevant driver.
4. Update the driver :

We suggest the Driver Home website: <http://www.mydrivers.com>

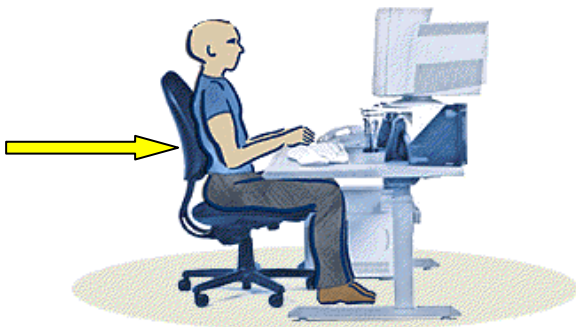
3. Safety & Comfort Guide

This guide describes proper workstation setup, posture, and health and work habits for computer users. In addition, this guide contains electrical and mechanical safety information applicable to computers.

Warning: there may be a risk of serious physical injuries from working at your computer workstation.

3.1 Improve Your Posture

Rather than working in a single posture, find your comfort zone. Your comfort zone is a range of positions that is generally appropriate and comfortable for your given work situation.



I. Back:

Use your chair to fully support your body. Distribute your weight and use the entire seat and backrest to support your body.



II. Legs:

Make sure your feet can rest solidly and comfortably on the floor while sitting. Use an adjustable work surface and

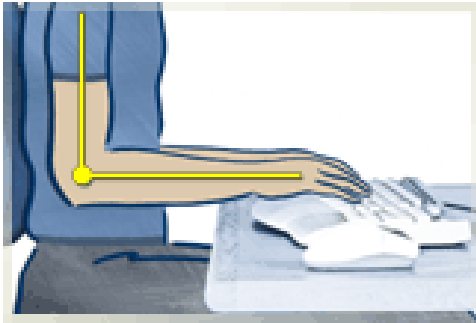


chair that allow your feet to rest firmly on the floor, or use a footrest.

III. Shoulders and Elbows:

To minimize muscle tension, your shoulders

should be relaxed, not elevated or drooped, and your elbows should be placed comfortably in relation to your keyboard height.



IV. Wrists and Hands:

While typing and using a pointing device, keep your wrists and hands in their neutral comfort zone. When typing, don't anchor or rest your wrists on your work surface, your thighs, or a palm rest.



V. Neck:

Don't slouch forward. Keep the contour of your spine.

VI. Eyes:

Rest your eyes.

Clean your monitor and glasses.

Have your eyes examined.

3.2 Take Breaks

When you work at your computer for long periods, take short breaks at least once per hour and preferable more often. You may find that frequent, short breaks will benefit you more than fewer, longer breaks.

During your breaks, stand up and stretch, especially any muscles and joints you may have held in an extended static posture while using the computer.

3.3 Keep Health

Cultivate your health and fitness. Additionally, your overall health and tolerance for the rigors of work typically can be improved by avoiding adverse health conditions

and by exercising regularly to improve and maintain your physical fitness.

4. Guide of the computer system optimization

4.1 Change Monitors Refresh Frequency

To protect your eyesight, it is intensely advised that you change the refresh frequency of the monitor.

Use the mouse to right click on the desktop, choose “display properties” on the pop-up menu to enter the setting screen, choose “Highest (32bit)” in the “Color quality” panel, and the “Screen resolution” is recommended to be changed to 800*600 or 1024*768, click “apply”.

Enter “Advance” to (Default Monitor) and properties, click “monitor” panel, to change the refresh frequency (it is suggested the frequency be 75Hz, immoderately high frequency will lead to display errors; and immoderately low frequency will lead to the effect of flicker on the screen.)

4.2 BIOS Settings

The BIOS has been best optimized and the computer is in the excellent performance. We don't suggest the non-advanced user to change the setting. If the change of setting leads to error, please recover the BIOS settings to default.

You may need to change the boot order if you are to reinstall OS or to run some special program.

If the main board BIOS is Award BIOS, restart the computer, press “Delete” key before the OS begins to run, choose “Advanced Bios Features”, change the First boot Device to the driver you need to boot with. If “Floppy” is chosen, the computer will boot from the floppy driver, if “CDROM”, the computer will boot from CD-ROM driver and if “HDD-0” the computer will boot from the hard disk.

If the main board BIOS is AMI BIOS, you should set the boot order as the following step:

restart the computer, press “Delete” key before the OS begins to run, choose “Boot Configuration Setup”, then “Boot Device Priority”, enter, choose the First boot Device to the driver you need to boot with. The final step is to use “+” key to adjust the target device to the top.

Booting from hard disk can accelerate the booting speed.

4.3 Open DMA channel

The open hard driver's and optical driver's DMA channel can accelerate the files transfer speed, for example: installing PC games or copying large sized files and documents.

Right click on “My Computer”→Properties→Hardware→Device Manager

→IDE ATA/ATAPI controllers→Primary IDE Channel→Transfer mode→DMA if available.

P.S: Windows XP users are not required to run this process, the system default setting has already opened DMA.

4.4 IP address configuration

If you have already installed the LAN card driver, right click My Network Places→Properties→Local Area Connection→Properties →(Double click) Internet Protocol (TCP/IP). Choose “use the following IP address” and fill in you IP, Subnet mask, default gateway which your LAN administrator provides to you. (Users who have not got Ethernets, may fill in 192.168.0.1 and 255.255.255.0, don't fill in “Default gateway”)

By configuration of your IP address, you can accelerate the booting speed of your computer.

5. General Troubleshooting and solutions

The computer stops responding

Turn off the computer – If your computer locks up and you are unable to get a response by pressing a key on your keyboard or moving your mouse, press and hold the power button for at least 8 to 10 seconds until the computer turns off. Then press the power button again to turn on the computer. You might lose data if you are unable to perform an operating system shutdown.

A program stops responding

End the program –

1. Press <Ctrl><Shift><Esc> simultaneously.
2. Click **Applications**.
3. Click the program that is no longer responding.
4. Click **End Task**.

A program crashes repeatedly

NOTE: Software usually includes installation instructions in its documentation or on a floppy disk or CD.

Check the software documentation – Many software manufacturers maintain websites with information that may help you solve the problems. Ensure that properly installed and configured the program. If necessary, uninstall and reinstall the program. Then press the power button again to turn on the computer. The relevant program automatically runs during the start-up process. Follow the instructions on the screen.

A solid blue screen appears

Turn the computer off – If the computer does not respond to a keystroke or a proper shutdown, press the power button at least 8 to 10 seconds until the computer turns off.

Other software problems

Check the software documentation or contact the software manufacturer for troubleshooting information.

Check for viruses – Use a virus-scanning program to check the hard device, floppy disk or CDs.

Restart your computer – Save and close any open files, exit any programs, and then shut down your computer through the **Start** menu instead of pressing the

power button.

Check for compatibility – Ensure that the program is compatible with the operating system installed on your computer and that your computer meets the minimum hardware requirements needed to run the software. See the software documentation for information.