

Note: Exposure to loud noises from any source for extended periods of time may temporarily or permanently affect your hearing. The louder the radio's volume, the less time is required before your hearing could be affected. Hearing damage from loud noise is sometimes undetectable at first and can have a cumulative effect.

Avoid Burns



Antennas

- Do not use any portable radio that has a damaged antenna. If a damaged antenna comes into contact with the skin when the radio is in use, a minor burn can result.

Batteries (If appropriate)

- When the conductive material such as jewelry, keys or chains touch exposed terminals of the batteries, may complete an electrical circuit (short circuit the battery) and become hot to cause bodily injury such as burns. Exercise care in handling any battery, particularly when placing it inside a pocket, purse or other container with metal objects

Long transmission

- When the transceiver is used for long transmissions, the radiator and chassis will become hot.

Safety Operation



Forbid

- Do not use charger outdoors or in moist environments, use only in dry locations/conditions.
- Do not disassemble the charger, that may result in risk of electrical shock or fire.
- Do not operate the charger if it has been broken or damaged in any way.

FCC Radiation Exposure Statement

This equipment complies with FCC radiation exposure limits set forth for an uncontrolled environment.

This transmitter must not be co-located or operating in conjunction with any other antenna or transmitter.

ISED Radiation Exposure Statement:

This equipment complies with ISED RF radiation exposure limits set forth for an uncontrolled environment.

This transmitter must not be co-located or operating in conjunction with any other antenna or transmitter.

Cet appareil est

conforme aux limites d'exposition de rayonnement RF ISED établies pour un environnement non contrôlé.

Cet émetteur ne doit pas être co-implanté ou fonctionner en conjonction avec toute autre antenne ou transmetteur.

- Do not place a portable radio in the area over an air bag or in the air bag deployment area. The radio may be propelled with great force and cause serious injury to occupants of the vehicle when the air bag inflates.

To reduce risk

- Pull by the plug rather than the cord when disconnecting the charger.
- Unplug the charger from the AC outlet before attempting any maintenance or cleaning.
- Contact Reteless for assistance regarding repairs and service.
- The adapter shall be installed near the equipment and shall be easily accessible
- Risk of explosion if battery is replaced by an incorrect type. Dispose of used batteries according to the instructions.
- Adapter shall be installed near the equipment and shall be easily accessible.
- The plug considered as disconnect device of adapter.
- The operating temperature of the EUT can't exceed the specified range.

Approved Accessories



- This radio meets the RF exposure guidelines when used with the Reteless accessories supplied or designated for the product. Use of other accessories may not ensure compliance with the RF exposure guidelines and may violate regulations.

- For a list of Reteless-approved accessories for your radio model, visit the following website:
<http://www.Reteless.com>



RETELESS

TT105

Wireless Transmission System



Henan Eshow Electronic Commerce Co., Ltd

Facebook: [facebook.com/RetelessWirelessSystem](https://www.facebook.com/RetelessWirelessSystem)

E-mail: support@reteless.com

Web: www.reteless.com



MADE IN CHINA

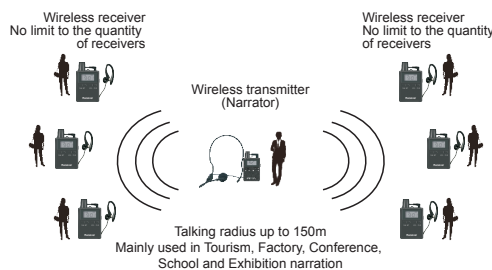
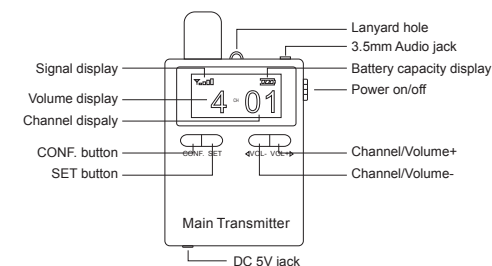
EU Importer:

Name: Germany Retevis Technology GmbH

Address: Uetzenacker 29, 38176 Wendeburg

Buttons and Functions

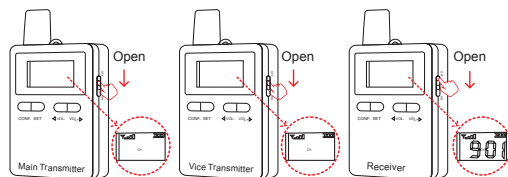
This product permits two person to speak to hundreds of or thousands of people at one time without noise. It means two Transmitters can work with thousands of Receivers together with long distance.(Only Main Transmitter sends the signal to the Receivers and the Vice Transmitter.)



Operation Instruction:

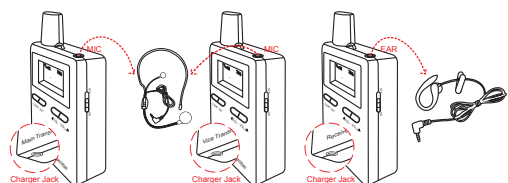
Step 1: Turn on transmitter/receiver

Turn on transmitter/receiver first by pulling down "on/off" button. Status of signal, battery, volume and channel will display on screen. Signal of receiver appears only once it was controlled by transmitter.



Step 2: Insert microphone/earphone

Insert MIC into "MIC" jack in transmitter and earphone into "EAR" jack in receiver TIGHTLY. DO NOT put Microphone/Earphone wrongly into charge jack harshly to avoid damage the charging pin inside.



Step 3: Adjust Volume

Press "Vol-" button to turn down the volume. Press "Vol+" button to turn up the volume. Max volume of transmitter is 4 and max volume of receiver is 9.

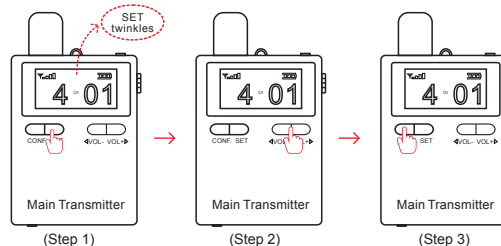


Step 4: Select Channel: Channel can be selected manually or by one-key

- By manual

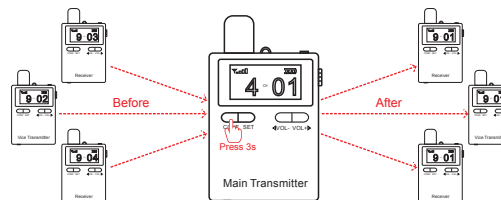
- 1) Press SET button, you will see "SET" twinkles on Screen
- 2) Select the channel you want by pressing "Vol-" button to turn down channels and pressing "Vol+" button to turn up the channels.
- 3) Press "CONF." button to confirm the channel just selected, then word SET disappears. The channel is successfully selected.

Note: Both main transmitter & vice transmitter & receiver apply to above operations



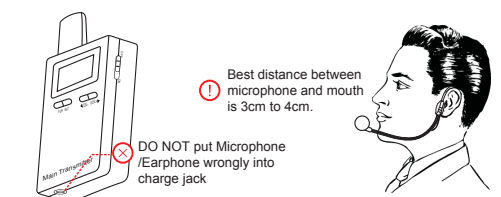
By one-key

Receivers synchronize with push of a button: if need adjust the channels of all the receivers quickly, just press "CONF." button of Transmitter for 3-5 seconds, then the channels of Receivers will be same as the Transmitter's. At the same time, make sure the receivers are turned on and are within 180 meters. Customers no need adjust the channels for receivers one by one.

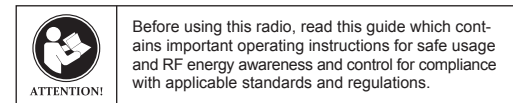


Notice:

1. Turn off transmitter before charging. Red led will flash during charging and it will stop flashing once finished charging.
2. Kindly handle it carefully and avoid falling it down.
3. Already controlled receivers' channel won't be changed by its neighbouring transmitters from other groups at any time at same place by any operations.
4. DO NOT use the same channel for different groups at same place and at the same time.
5. Best distance between microphone and mouth is 3cm to 4cm.
6. For simultaneous interpretation. It is suggested to use channel with bigger gap



RF ENERGY EXPOSURE AND PRODUCT SAFETY GUIDE



This radio uses electromagnetic energy in the radio frequency (RF) spectrum to provide communications between two or more users over a distance. RF energy, which when used improperly, can cause biological damage.

Radio License (if appropriate)

Governments keep the radios in classification, business radios operate on radio frequencies that are regulated by the local radio management departments (FCC, ISSED, OFCOM, ANFR, BFTK, Bundesnetzagentur ...). To transmit on these frequencies, you are required to have a license issued by them. The detailed classification and the use of your radios, please contact the local government radio management departments. Use of this radio outside the country where it was intended to be distributed is subject to government regulations and may be prohibited.

Unauthorized modification and adjustment

Changes or modifications not expressly approved by the party responsible for compliance may void the user's authority granted by the local government radio management departments to operate this radio and should not be made. To comply with the corresponding requirements, transmitter adjustments should be made only by or under the supervision of a person certified as technically qualified to perform transmitter maintenance and repairs in the private land mobile and fixed services as certified by an organization representative of the user of those services.

Replacement of any transmitter component (crystal, semiconductor, etc.) not authorized by the local government radio management departments equipment authorization for this radio could violate the rules.

FCC Requirements:

Any Changes expressly or modifications not approved by the party responsible for compliance could void the user's authority to operate the equipment.

- This device complies with part 15 of the FCC Rules. Operation is subject to the following two conditions:

- (1) This device may not cause harmful interference, and
- (2) this device must accept any interference received, including interference that may cause undesired operation.

- This equipment has been tested and found to comply with the limits for a Class B digital device, pursuant to Part 15 of the FCC Rules. These limits are designed to provide reasonable protection against harmful interference in a residential installation.

This equipment generates uses and can radiate radio frequency energy and, if not installed and used in accordance with the instructions, may cause harmful interference to radio communications. However, there is no guarantee that interference will not occur in a particular installation. If this equipment does cause harmful interference to radio or television reception, which can be determined by turning the equipment off and on, the user is encouraged to try to correct the interference by one or more of the following measures:

- Reorient or relocate the receiving antenna.
- Increase the separation between the equipment and receiver.
- Connect the equipment into an outlet on a circuit different from that to

which the receiver is connected.
- Consult the dealer or an experienced radio/TV technician for help.

CE Requirements:

- (Simple EU declaration of conformity) Henan Eshow Electronic Commerce Co., Ltd declares that the radio equipment type is in compliance with the essential requirements and other relevant provisions of RED Directive 2014/53/EU and the ROHS Directive 2011/65/EU and the WEEE Directive 2012/19/EU; the full text of the EU declaration of conformity is available at the following internet address: www.retekeess.com.

Disposal

The crossed-out wheeled-bin symbol on your product, literature, or packaging reminds you that in the European Union, all electrical and electronic products, batteries, and accumulators (rechargeable batteries) must be taken to designated collection locations at the end of their working life. Do not dispose of these products as unsorted municipal waste. Dispose of them according to the laws in your area.

IC Requirements:

Licence-exempt radio apparatus

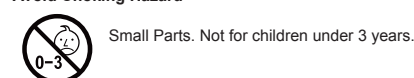
This device contains licence-exempt transmitter(s)/receiver(s) that comply with Innovation, Science and Economic Development Canada's licence-exempt RSS(s). Operation is subject to the following two conditions:

- (1) This device may not cause interference.
- (2) This device must accept any interference, including interference that may cause undesired operation of the device.

Le présent appareil est conforme aux CNR d'Industrie Canada applicables aux appareils radio exempts de licence. L'exploitation est autorisée aux deux conditions suivantes :

- (1) l'appareil ne doit pas produire de brouillage;
- (2) l'utilisateur de l'appareil doit accepter tout brouillage radioélectrique subi, même si le brouillage est susceptible d'en compromettre le fonctionnement.

Avoid Choking Hazard



Protect your hearing:

- Use the lowest volume necessary to do your job.
- Turn up the volume only if you are in noisy surroundings.
- Turn down the volume before adding headset or earpiece.
- Limit the amount of time you use headsets or earpieces at high volume.
- When using the radio without a headset or earpiece, do not place the radio's speaker directly against your ear
- Use careful with the earphone maybe possible excessive sound pressure from earphones and headphones can cause hearing loss