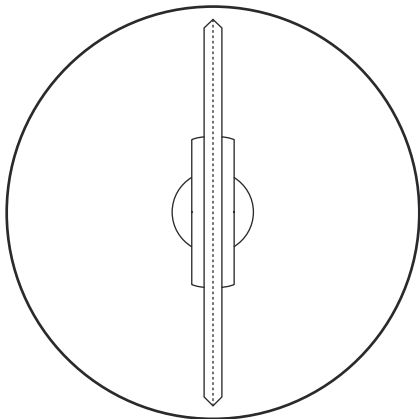


HOLO-18
HOLO-26
HOLO-50
HOLO-65

USER MANUAL



Hologruf

3D Hologram Display Solutions



SAFETY WARNINGS

**DO NOT TOUCH THIS DEVICE WHEN IT IS
IN OPERATION! YOU WILL BE INJURED
DUE TO ANY VIOLATION OTHERWISE!**

3D Hologram Display Solutions

Hologruf, Inc.

Cary, North Carolina, USA



ATTENTION: Do not disassemble the device, nor replace the TF card without permission! Any violation will void manufacturer's warranty.

For safety and protection purposes during the transportation, please use the following recommended couriers:



FedEx



德邦

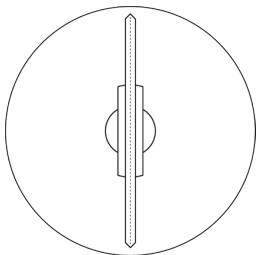
Packaging List

Goods	Quantity
Main Display	1
Power adapter	1
Remote control	1
Wall mouting parts	1
Gaskets	6
User manual	1

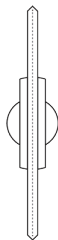
Product instruction

The Holo-65 or Holo-26 is one of Hologruf displays empowered by a fully-patented Persistence of Vision (POV) technology that rotates images or videos through one belt of ultra-high-density LED lights and presents in 3D hologram visual effects. This device comes with the characters of ultra-thin exterior design, ultra-low power consumption, ultra-high attractiveness, and design for portable.

Product view

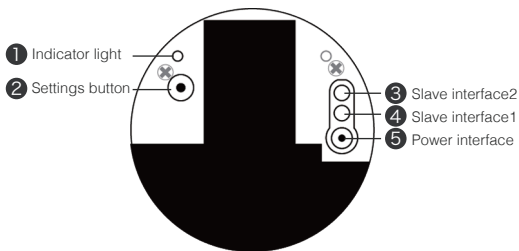
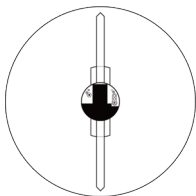


Device with an
acrylic cover



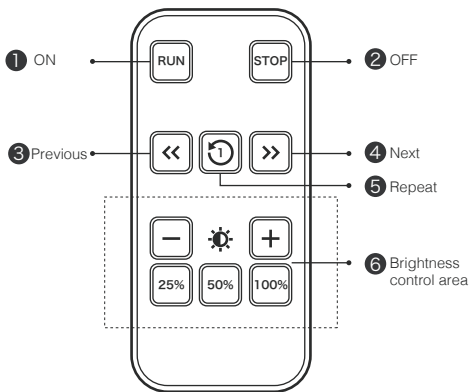
Device without
the cover

Description of back interfaces



- 1 Indicator light: Indicates the power, ON/OFF, Mode-switching and so on.
- 2 Setting button: Switching Mode, Pairing remote control .
- 3 Slave interface: Used in slave mode (See "Slave mode")
- 4 Power interface: Plug in the power adapter.

Remote control instruction



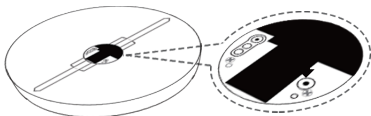
- 1 ON**: Turn on the device, switch stand-by status to operating status
- 2 OFF**: Turn off the device, switch operating status to stand-by status
- 3 Previous**: Play the previous content from the list
- 4 Next**: Play the next content from the list
- 5 Repeat**: Repeat to play the current content
- 6 Brightness control**: This feature might not be available

Connect power:

1

After plugging in the power adapter to the device, you will see the LED lights lit up, also the indicator light on the back panel will be on in red.

2

**Remote Pairing:**

When the display is in the standby mode, press the "Setting" button on the backplane. The indicator light will change in color from red to blue. Then, point the remote control to the display, then press and hold the "100%" button till the blue light flashes and turns into red. Now the pairing process is completed.

ON/OFF:

3

To turn on the display:

Point the remote control to the display, and press "Run".

To turn off the display:

Point the remote control to the display, and press "Stop".

Play contents

To play a different content:

4

Point the remote control to the display, and press ">>" to play the next content from the playlist.

Point the remote control to the display, and press "<<" to play the previous content from the playlist.

Host vs. Slave mode

5

The display can be set to Host mode or Slave mode. By default, the host mode displays the content as a single device. While in the slave mode, the display needs to be connected with another display that is in the host mode. In such 'networking' setup, all displays interconnected can be used to present a bigger display area. The display can not be used alone, nor be controlled by a remote control if this display is in the slave mode.

1. Change the mode

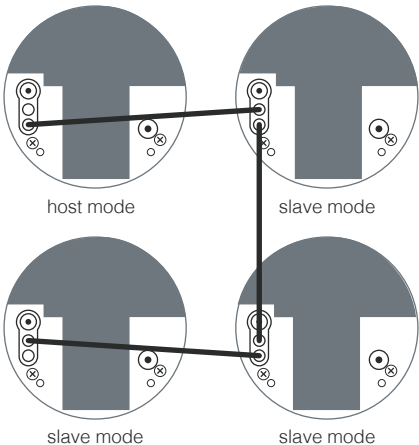
When the display is standby, press and hold the "setting" button on the backplane. When the indicator light is on in red, the display is in the host mode. When the indicator light is on in blue, the display is in the slave mode.

2. Networking

To set up a 'networking' using multiple Hologruf displays, connect these displays as follows:

Slave socket 2 of display #1 (in host mode) is connected to slave socket 1 of display #2 (in slave mode). Slave socket 2 of display #2 is connected to slave socket 1 of display #3 (in slave mode), and so on. Once this 'networking' setup is completed, only the display #1 in the host mode can be controlled.

Four displays networking example



Hologruf Mobile App

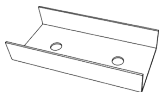
The "Hologruf" mobile app (iPhone and Android apps) is dedicated for controlling (turn on/off) the Hologruf displays and managing content playing (content uploading, deletion, playlist, and etc.).

Installation instruction

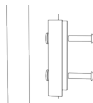


Holo-26 and Holo-65 displays can be installed on wall.

1



Wall-hung fixing part



Installation diagram

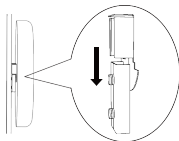
Mounting parts

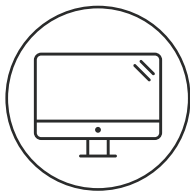
You need expansion screws or common screws to install the mounting parts on the wall first prior to mounting the display to the wall. You need three gaskets between the wall and mounting parts to minimize any potential movement of the mounting part after the installation of the display.

2

Display Installation

Slide down the metal bracket behind the display to insert into the mounting parts to complete the display installation on the wall.





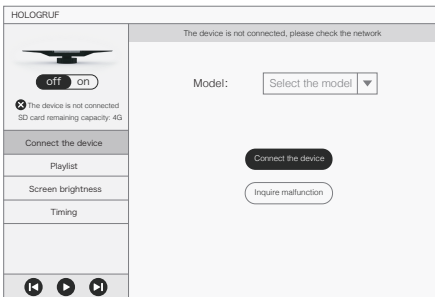
**PC Application
for device control &
content management**

1

Download software

Download the PC software from <http://www.hologruf.com>

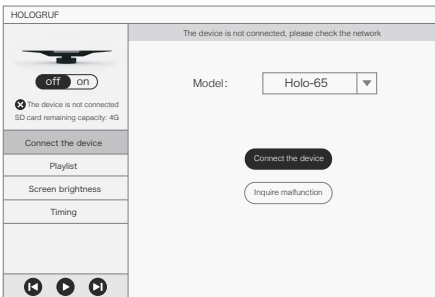
2



Install software

Download the software package, unzip file "PC_Hologruf+version No.zip", double click "POV.exe" to run the schedule manager, and it will prompt you to check network connection.

3



Connect the device

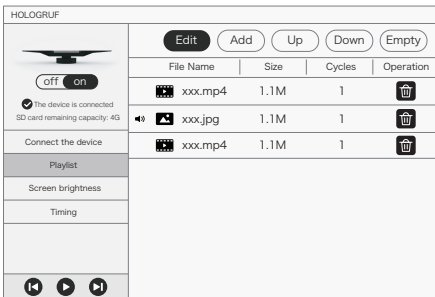
PC needs to be connected to the Hologruf device via WiFi. Select the device model to connect the device, if it displays "connection failed", click the button "Inquire malfunction" to check the error.

4

ON/OFF

Click the power ON button, the device will be turned on and start to rotate. Click the OFF button, the device stops from the rotation, and shutdown completely. You can also use the remote control to operate.






Playlist

- 1 Edit:** Select the corresponding playback file, click the Edit button, modify the repeat times.
- 2 Add:** Click the Add button, you will see the select option, select the content you want to play.
- 3 Up:** Select the corresponding play file, click the Up button, move the play file
- 4 Down:** Select the corresponding play file, click the Down button, move the play file.
- 5 Delete:** Select the content you want to delete in the clip list, and click the Delete icon.
- 6 Empty:** Click the Empty button, then you can empty all of the contents in the list.

6

HOLOGRUF



off on

✓ The device is connected
SD card remaining capacity: 4G

Connect the device


Playlist

Screen brightness

Timing

Screen brightness

..... 7




Screen brightness

Move the bar indicator to adjust the brightness.

7

HOLOGRUF



off on

✓ The device is connected
SD card remaining capacity: 4G


Connect the device

Playlist


Screen brightness

Timing

Timing

○ Timing start-up 

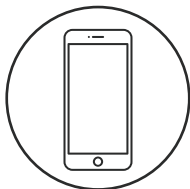
0 0 : 0 0 : 0 0

○ Timing shutdown 

0 9 : 2 1 : 0 0

Timing

Enter your schedule to turn on or turn off the HologrUF display.



**The Hologruf
Mobile APP
for device control &
content management**

1

Software downloads

Download the "Hologruf" iPhone app directly from Apple app store. Also the "Hologruf" Android phone app can be downloaded directly from the Google Play app store.


2

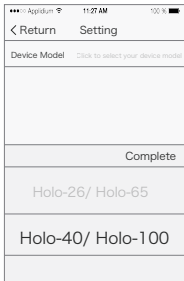
Wifi connection

Power on the Hologruf device, and wait no longer than 3 minutes, you should be able to see the device shows up on the Wi-Fi list, being listed as e.g. Hologruf...-<Wifi-ID>. Type in the Wi-Fi password to connect securely.

3

Select the device model

Click the Settings button  in the upper right corner of the home page to select the type of device.



4



Connect device

After connecting to the Hologruf device via Wi-Fi, click "ON" to turn on the device.



5


Upload Video and Image

Open the playlist, choose , click the upload button  to select the file, enter the file name and click OK.



6

Empty the playlist






Empty the playlist : Click the emptying button 






7

Delete single file:

Left slide the corresponding file, the Delete button will appear, click the button to complete

 xxxx.mp4	Cycles: 1		
 xxxx.mp4	Cycles: 4		
xx.mp4	Cycles: 6		
 xxxx.mp4	Cycles: 10		

8

 xxxx.mp4	Cycles: 1		
 xxxx.mp4	Cycles: 4		
xx.mp4	Cycles: 6		
 xxxx.mp4	Cycles: 10		

×

File Name: xxxx.mp4

Cycles:

Cancel
OK

Setting repeat times of playing the file

Left slide the corresponding file, the Edit button will appear, click to edit dialog box (Note: 0 stands for a single file loop)

FCC Statement

This equipment has been tested and found to comply with the limits for a Class B digital device, pursuant to part 15 of the FCC rules. These limits are designed to provide reasonable protection against harmful interference in a residential installation. This equipment generates, uses and can radiate radio frequency energy and, if not installed and used in accordance with the instructions, may cause harmful interference to radio communications. However, there is no guarantee that interference will not occur in a particular installation. If this equipment does cause harmful interference to radio or television reception, which can be determined by turning the equipment off and on, the user is encouraged to try to correct the interference by one or more of the following measures:

- Reorient or relocate the receiving antenna.
- Increase the separation between the equipment and receiver.
- Connect the equipment into an outlet on a circuit different from that to which the receiver is connected.
- Consult the dealer or an experienced radio/TV technician for help.

To assure continued compliance, any changes or modifications not expressly approved by the party.

Responsible for compliance could void the user's authority to operate this equipment. (Example- use only shielded interface cables when connecting to computer or peripheral devices).

This equipment complies with Part 15 of the FCC Rules. Operation is subject to the following two conditions:

- (1) This device may not cause harmful interference, and
- (2) This device must accept any interference received, including interference that may cause undesired operation.

FCC Radiation Exposure Statement:

The equipment complies with FCC Radiation exposure limits set forth for uncontrolled environment. This equipment should be installed and operated with minimum distance 20cm between the radiator and your body.