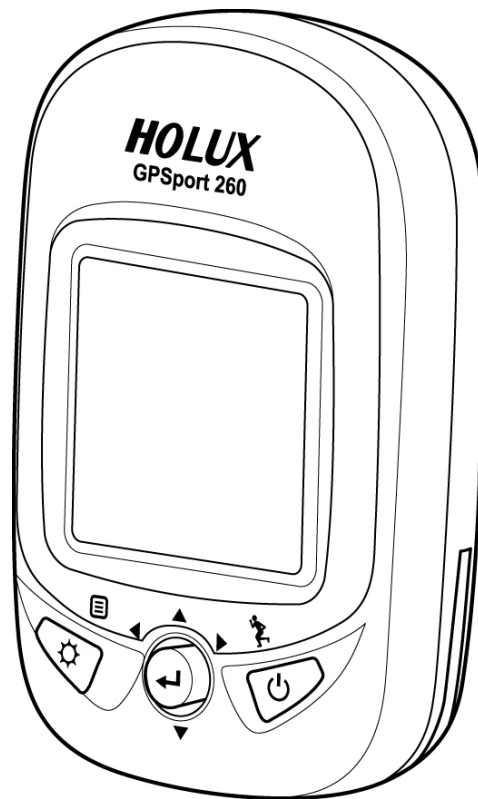


# GPSport 260



## User's Guide

## Safety Precautions

- Use the power adapter included with the package, using power adapters other than the one provided will result in malfunction and could prove dangerous.
- Do not use the power adapter in a wet environment. When hands and feet are wet, do not touch the power adapter.
- While using the power adaptor ensure that the area is well ventilated. Do not let paper or other material cover the power adaptor, as this will interfere with cooling. Do not use the power adaptor whilst it is in a bag.
- Do not attempt to repair the device. If device is damaged or is in a wet environment, replace the device immediately.
- This device is waterproof (meets IPX 7 standard) but not protected against water immersion.

## Warranty Information

The GPSport 260 is warranted to be free from defects in material and functions for a period of one year from the date of purchase. If there is a product failure of within this period (under normal conditions), a replacement will be provided at no charge to the customer.

## Copyright Information

No part of this manual, including the products and software described in it, may

be reproduced, transmitted, transcribed, stored in a retrieval system, or translated into any language in any form or by any mean, without the express written permission of Holux Technology, Inc.

Copyright© 2008 Holux Technology, Inc. All Rights Reserved.

## **Federal Communications Commission (FCC) Statement**

This equipment has been tested and found to comply with the limits for a Class B digital device, pursuant to Part 15 of the FCC Rules. These limits are designed to provide reasonable protection against harmful interference in a residential installation. This equipment generates, uses and can radiate radio frequency energy and, if not installed and used in accordance with the instructions, may cause harmful interference to radio communications. However, there is no guarantee that interference will not occur in a particular installation. If this equipment does cause harmful interference to radio or television reception, which can be determined by turning the equipment off and on, the user is encouraged to try to correct the interference by one or more of the following measures:

- Reorient or relocate the receiving antenna.
- Increase the separation between the equipment and receiver.
- Connect the equipment into an outlet on a circuit different from that to which the receiver is connected.
- Consult the dealer or an experienced radio/TV technician for help.

## **CAUTION**

Any changes or modifications not expressly approved by the grantee of this device could void the user's authority to operate this equipment.

This device complies with Part 15 of the FCC Rules. Operation is subject to the following two conditions: (1) This device may not cause harmful interference, and (2) this device must accept any interference received, including interference that may cause undesired operation.

For product available in the USA/Canada market, only channel 1~11 can be operated. Selection of other channels is not possible.

## **RF Exposure Warning**

This equipment must be installed and operated in accordance with provided instructions and the antenna(s) used for this transmitter must be installed to provide a separation distance of at least 20 cm from all persons and must not be co-located or operated in conjunction with any other antenna or transmitter. End-users and installers must be provided with antenna installation instructions and transmitter operating conditions for satisfying RF exposure compliance.

# Table of Contents

Getting Started .....	7
FEATURES.....	7
UNIT APPEARANCE.....	8
BUTTON.....	9
ACCESSORIES.....	10
CHARGING THE BATTERY .....	12
Using the AC Charger .....	12
INSTALLING BIKE MOUNT.....	13
CONNECTING TO A PC.....	15
DRIVER INSTALLATION .....	16
Using the GPSport 260 .....	19
Turn on system power.....	19
Turn off system power.....	19
Menu.....	19
Status Icons.....	19
Sport Mode .....	22
Plot Mode .....	24
Multi Finder.....	25
Pedometer Mode.....	26
Self Training Mode .....	26
Follow Course Mode .....	27
Weather Forecast Mode .....	29
History Mode .....	30
Setting Mode .....	32

Normal Care and Maintenance..... 41

Specifications ..... 43

## Getting Started

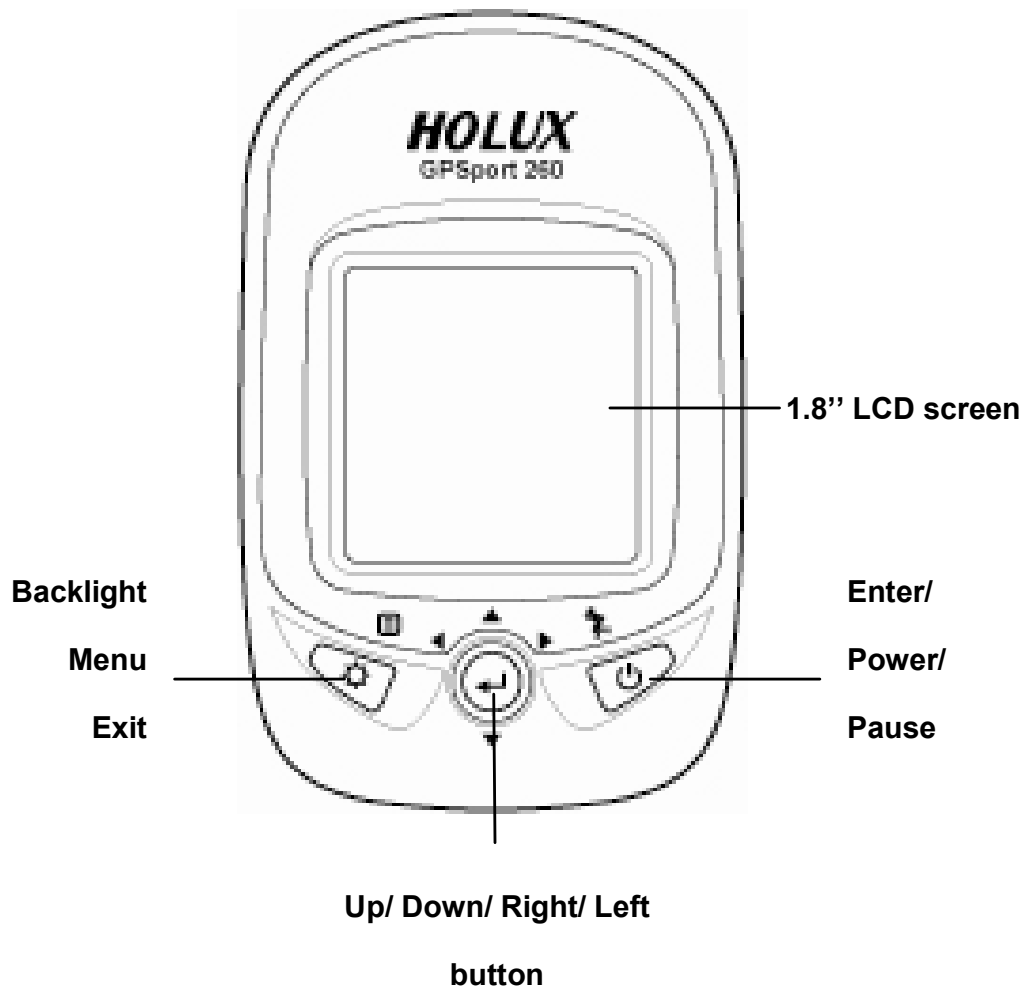
Thank you for purchasing the GPSport 260. The GPSport 260 is a compact and lightweight device designed for sporting use. It is equipped with GPS tracking to calculate the amount of CO<sup>2</sup> emissions reduced and the amount of calories consumed by not driving.

## Features

- GPS positioning
- Automatic page flipping
- Auto power off after a specified interval with no signal
- Multi Finder can record up to 10 locations and supports return to starting point
- Can simulate an analog speedometer or use a large-font display
- 4 sport modes for calorie calculations
- Track Log function can start recording after satellite fix
- One touch POI recording
- Supports metric and imperial measurements
- Supports time zones
- Supports 12-hour or 24-hour time display
- 2.4G wireless heart sensor and pedometer

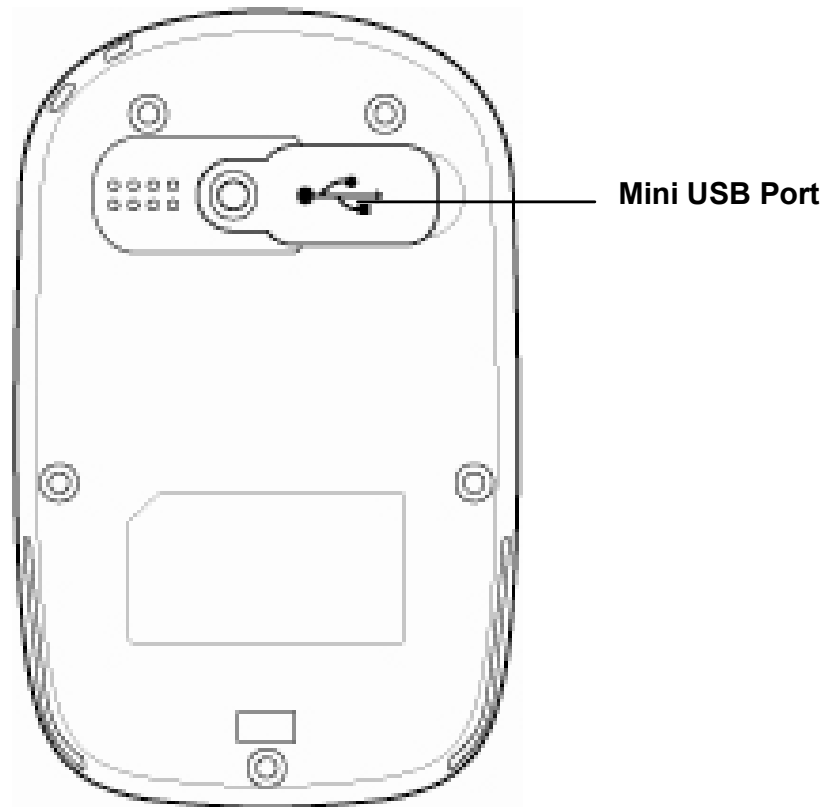
# Unit Appearance

## Front View







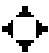


## Rear View




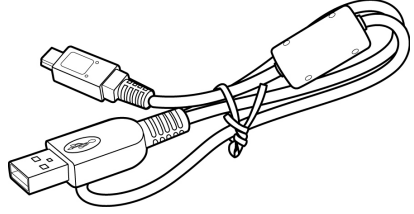

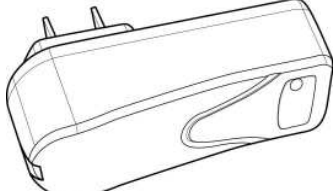

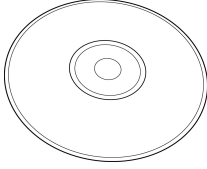
## Button

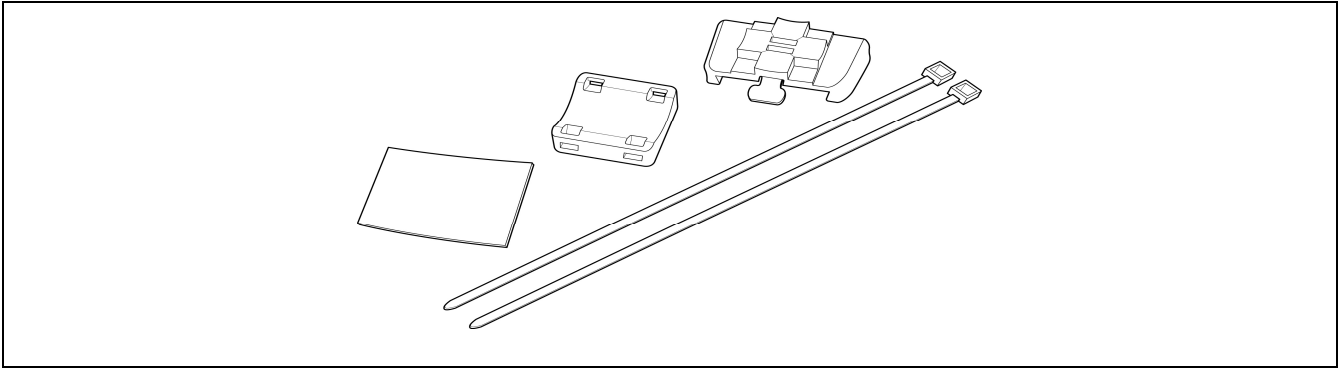
### Basic button functions

Name	Icon	Function
Power button	 	Turn unit on or off.
Menu Exit	 	Exit menu.
Cursor buttons		Use Up, Down, Left and Right to select an option. Press the Enter button in the middle to confirm input.

## Accessories

Please make sure the following accessories are included in the box. Please contact your supplier immediately if there are any missing items.

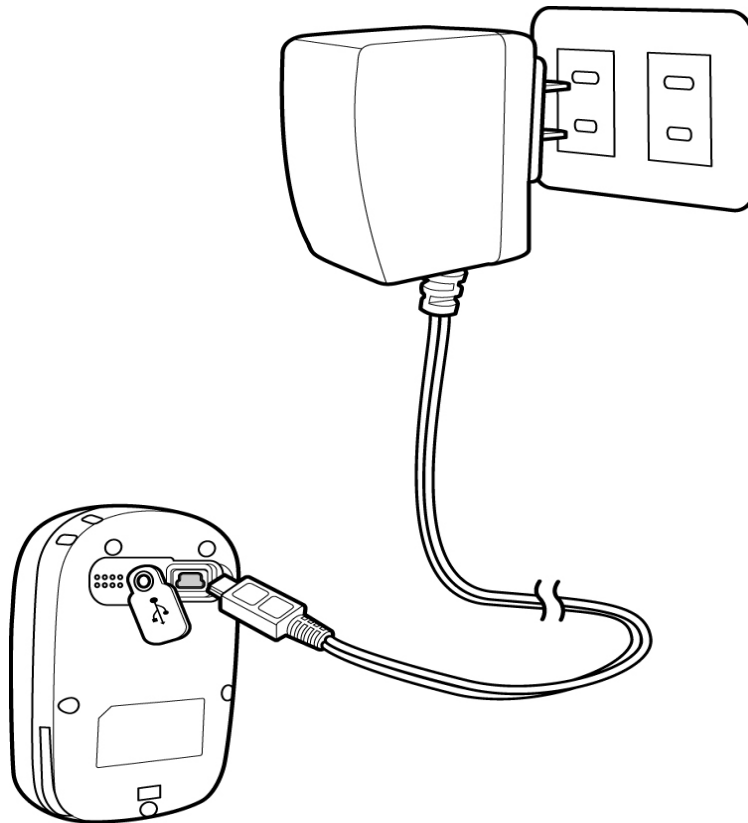
<p><i>GPSport 260</i></p> 	<p><i>USB cable</i></p> 
<p><i>Quick Guide</i></p> 	<p><i>AC Adapter</i></p> 
<p><i>Warranty Card</i></p> 	<p><i>CD-ROM</i></p> 
<p><i>Bicycle Mounting Kit</i></p>	





## Charging the Battery

### Using the AC Charger

1. Plug the mini USB plug of the AC charger into the mini USB port on the top of the handset.
2. Plug the AC charger into a wall outlet.

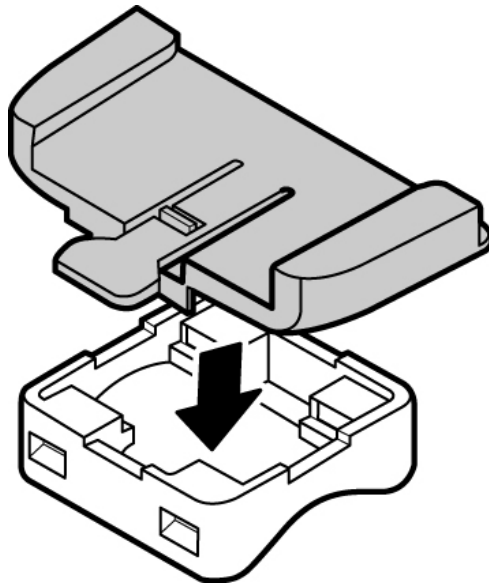


When charging, the Power indicator shows . After charging is complete, the Power indicator shows .

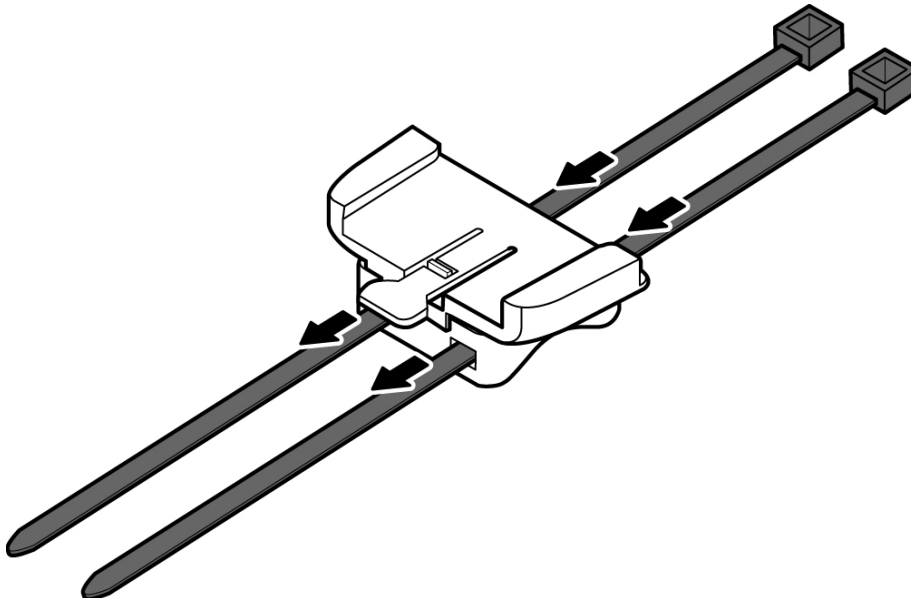
## Installing Bike Mount

You can install the bike mount and the GPS on the left or right side of the handlebar or on the stem.

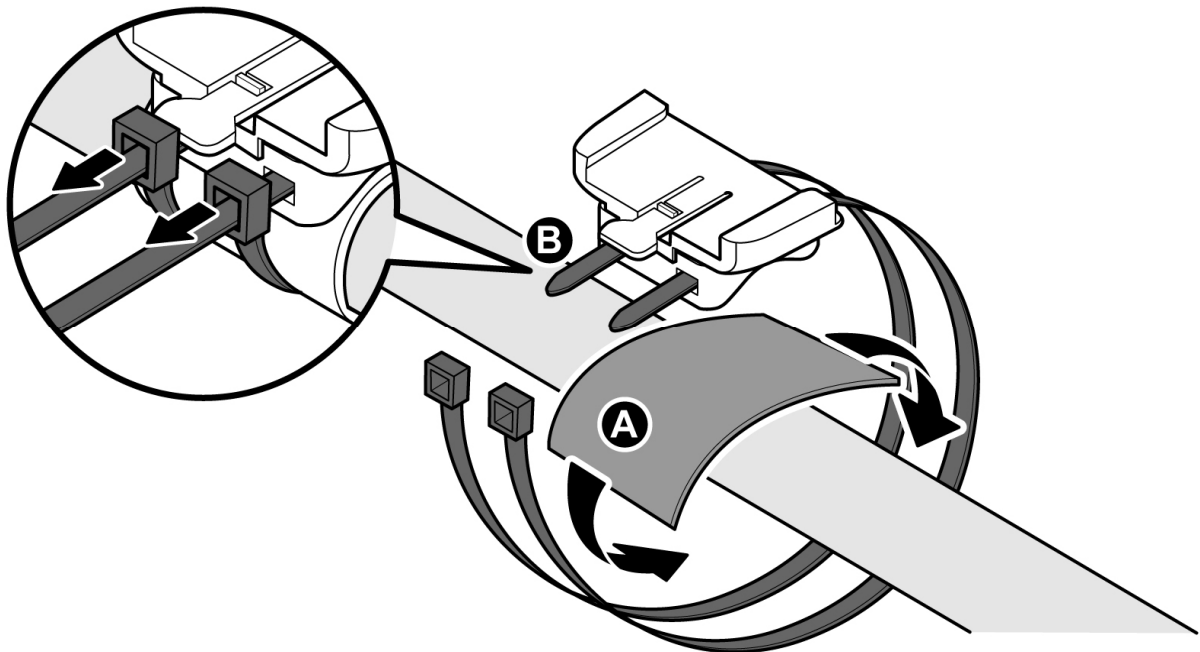
1. Attach the bracket to the bracket holder.



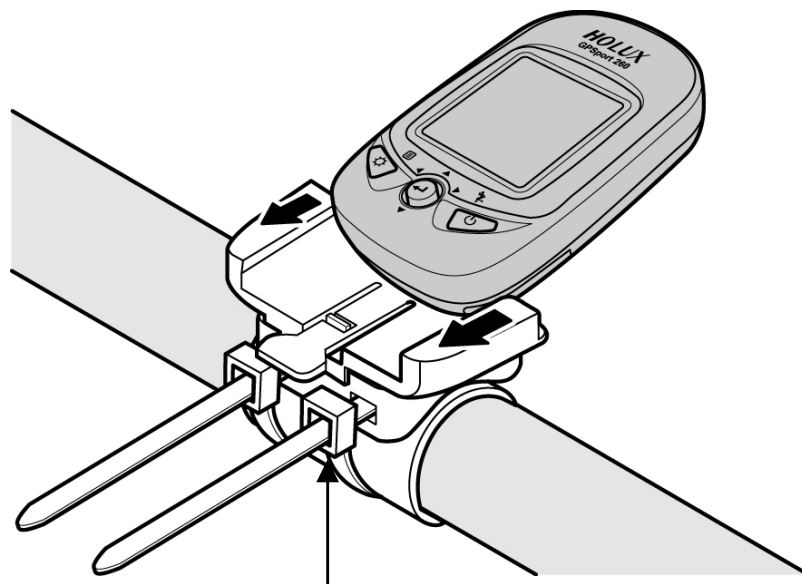
2. Thread the two cable ties through the slots of the bracket holder.



3. Place the rubber pad under the bike mount and attach the bike mount securely to the bike stem using the two cable ties.



4. Slide in the GPS on top of the bike mount until it snaps into place.

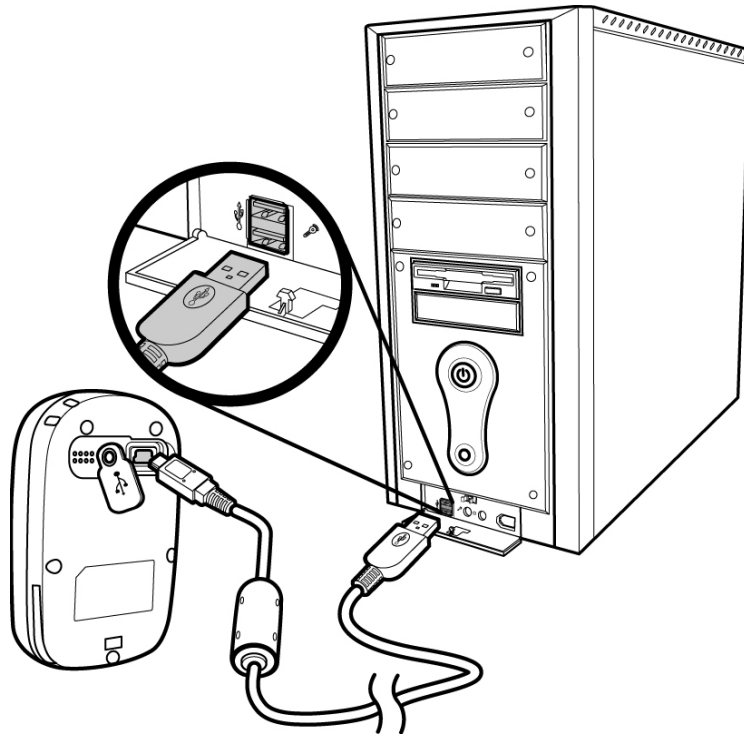


Push here to release

※ Cable ties are reusable

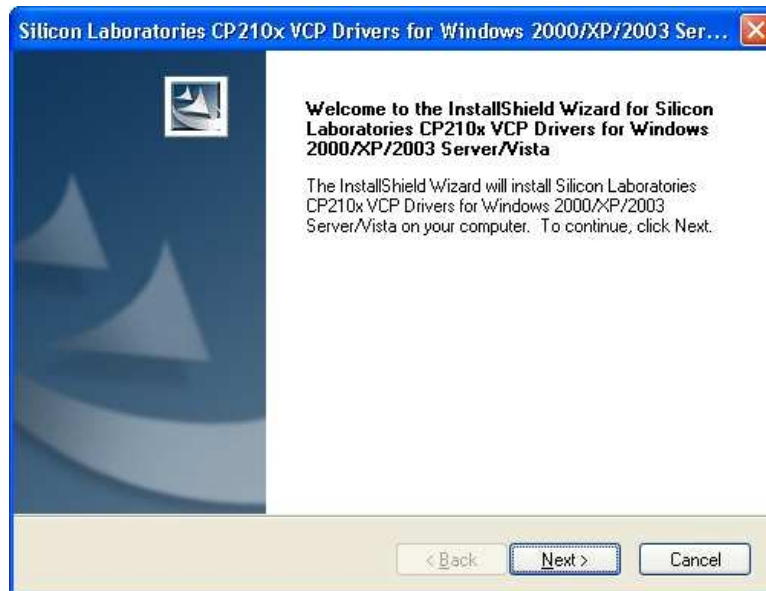
## Connecting to a PC

1. Connect the mini USB plug (smaller) of the USB cable to the mini USB port on the top of the system.
2. Connect the USB plug (larger) or the USB cable to a USB port on your computer.

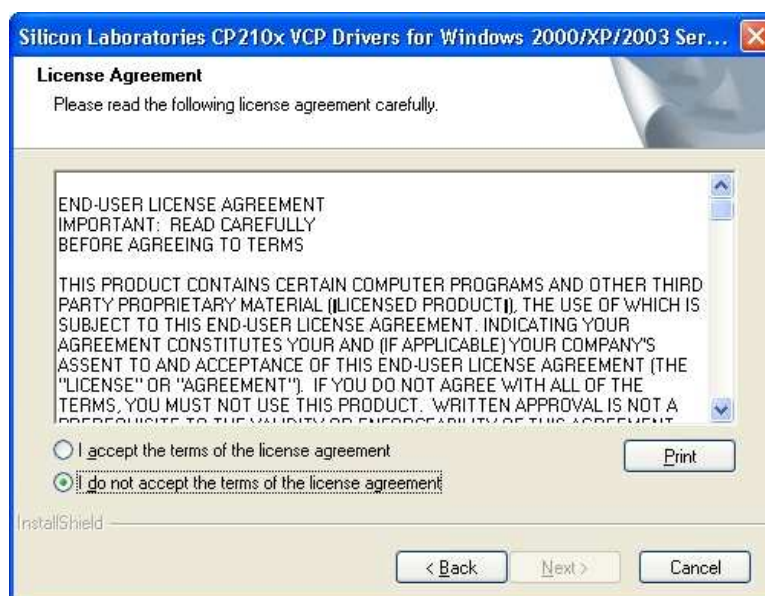


## Driver installation

1. Insert the provided installation CD into the computer's CD drive. The introductory screen appears automatically. If the screen does not appear, open the Autorun.exe file on the CD.

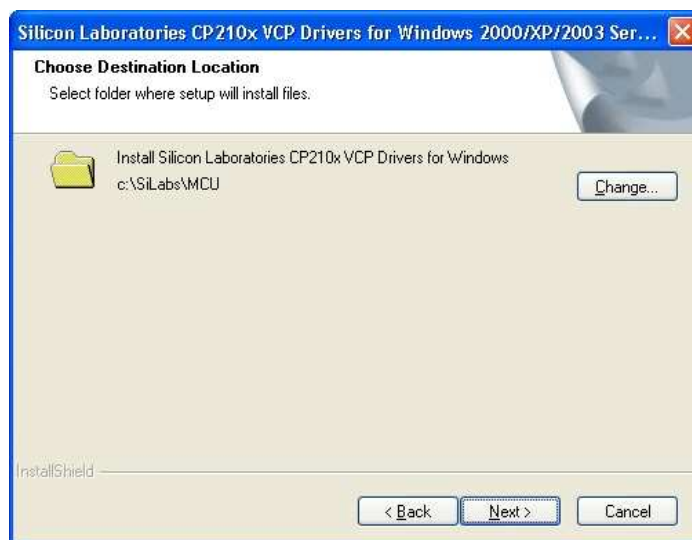


2. Click Next to begin the installation. The License Agreement screen opens.

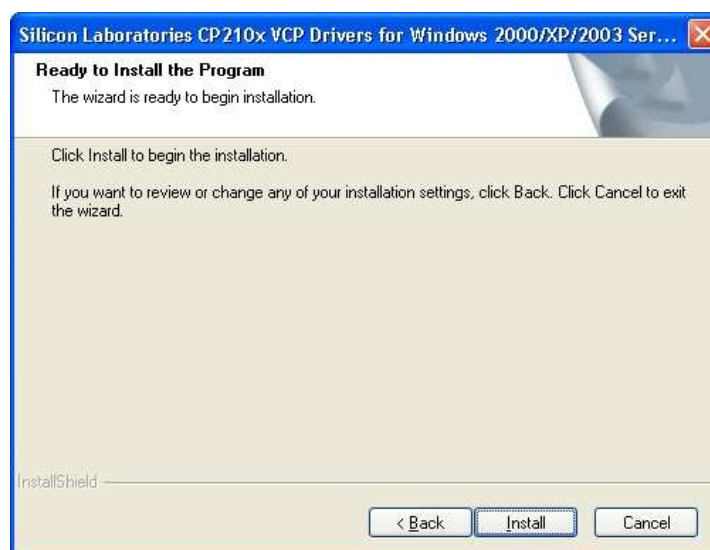




3. Read the agreement, click I accept the terms of the license agreement, then click Next. The Destination Folder screen opens.
4. To install the driver in the default location, click Next. The Ready to Install the Program screen opens. Or, to change the location, click Change, type the location, then click Next. The Ready to Install the Program screen opens.



5. Click Install to continue installation. The Driver Installer screen opens.



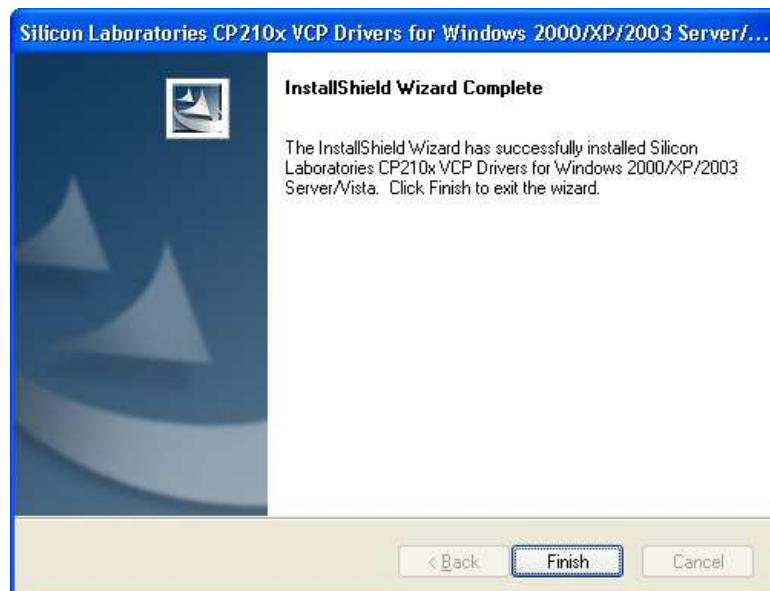
6. Click Install to start driver installation or click Change Install Location to change installation folder.



7. Installation is done. Click OK to continue.



8. Click Finish to exit the wizard.



# Using the GPSport 260

## Turn on system power

Hold down the Power button until the startup screen appears on the LCD.

## Turn off system power

Hold down the Power button until the LCD shuts off.

## Menu



The GPSport 260 offers 9 operating modes. Use the cursor buttons to cycle through the options. Press OK to enter the selected mode.





## Status Icons

The status icons indicates Sport mode, Auto Turn Page, POI, Backlight, Satellite Status, Memory Mode and Battery.





Sport mode offers calorie calculation or indicates that logging is currently active. When the Sport mode icon disappears, it means the logging function is stopped or paused.



### Sport mode icons:

-  Bicycle mode
-  Running mode
-  Walking mode
-  Vehicle mode

### Track Log icons:

-  Track currently being logged
-  Track currently not being logged

### Compass icons:

-  The black arrow points north
-  The compass needs calibrating

### Backlight icon:

-  Backlight is on

### Satellite mode icons:

-  Satellite fix acquired

 Device currently attempted to acquire satellite fix

### Memory mode icons:



Overwrite: Memory now in Overwrite mode



Full Stop: Show % of remaining memory

### Battery status icons:



Battery fully charged



Battery now charging

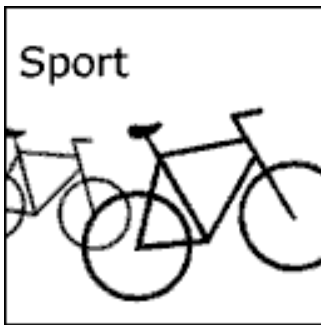


Battery has been charged



Low battery warning

## Sport Mode

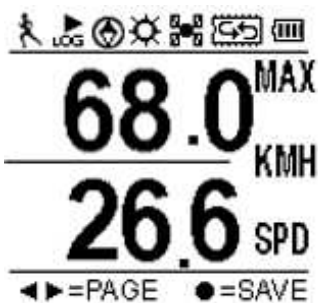


In Sport mode, the Left and Right buttons can be used to cycle between different pages of information.



### Dashboard:

Displays the speedometer (simulates the analog dashboard seen in most transportation). The user can customize the text to display including speed + travel time, speed + current time, or speed + distance.



### Speed:

Displays maximum speed and current speed.



### Distance and Time:

Displays distance and time travelled since log started.



**Altitude:**

Displays change in altitude.



**Calories:**

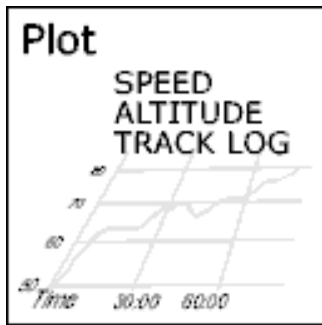
Displays calories consumed per lap and total calories consumed today.



**Carbon Saving:**

Displays amount of carbon dioxide emissions avoided or number of trees planted by not driving for one journey.

## Plot Mode

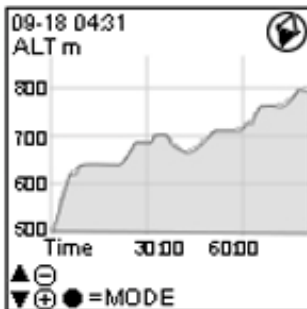


Plot mode can show a graph of the track log. It can also show the track in real time.

**Track Log**  
 Altitude / Speed Plot  
 Track-View Mode  
 Track-Zoom / Pan Mode  
 Hide Track log (Show)  
 Information  
 [Menu] = [Back]    ▲▼    ●=OK

### View Plot

Displays the graph for altitude versus time. Use the up and down buttons to zoom in and out. Use the right button to select the x- and y- axis for the graph.



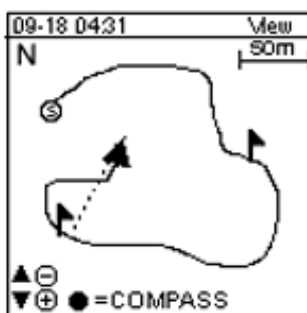
The following x- and y-axis combinations are available:

Altitude + Time

Altitude + Distance

Speed + Time

Speed + Distance

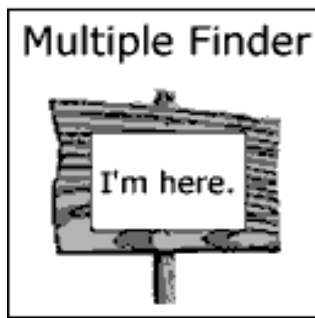


### Track

Show real-time track



## Multi Finder



Multiple Finder mode can show the direction to the start of the track and lead you back to the starting point; alternatively, enter the coordinates for the destination to be guided by direction and distance.



### Finder Board

Displays destination name as well as direction and distance to destination.

▼=LIST ▲=SHOW ►=SET

List Points	
TripStart	1116 09:00
1.Home	1117 09:55
2.Parking	1118 14:25
3.Meeting	1121 16:46
4.Start	0920 16:20
5.Landmark	1020 07:12
6.Entrance	1121 06:30
7.Exit	1122 08:32
8.Camping	1020 08:11
9.Secret	1011 09:12

### List Points

Can store up to 10 records

Select a Point	
N	00" 00' 00.00
E	000"00'00.00
1. Home	
2. Parking	
3. Meeting	

### Set Points

Save current coordinates to a POI on the List.

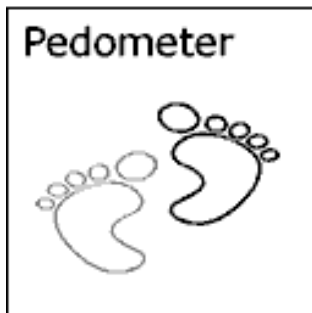
▲▼ ►=NAME ●=SET

```
Current Point
N 00" 00' 00.00
E 000"00'00.00
Home Point
N 00" 00' 00.00
E 000"00'00.00
-----
▼=CORD ▲=LIST ↵=EDIT
```

Show

Displays the coordinates of current location and the destination.

### Pedometer Mode



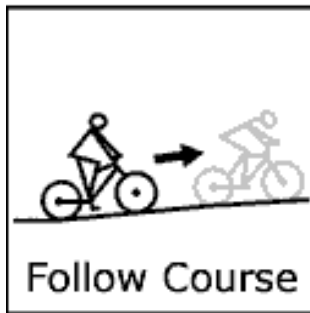
Pedometer mode counts and records the number of steps taken.

### Self Training Mode



The user can set a target value to reach in Self Training mode.

## Follow Course Mode



Follow course mode can be used to follow the recorded track.



Tracks can be downloaded from the PC to the GPSport 260.

LIST	LENG
001 Bicycl..	1.6km
002 Down..	7.8km
003 Leis..	24.0km
004 Mou. 33.2km	
005 Yang. 22.0km	

☰=↵ ▲▼ ●=OK

### List

Displays the tracks currently stored on the GPSport 260 as well as the total distance of each track.

Bicycle Trip	
DST	55.4 km
TIME	00:00:32
SPD <sub>MAX</sub>	24.4 kmh
SPD <sub>AVG</sub>	12.6 kmh
CAL	4465
ALT VAR	-2436 m

●=REV ▲▼ 🚴=CPT

Track details: distance, time, maximum speed, average speed, calories, altitude, carbon reduction, trees planted, and the number of check points in that track.

Check Points
1 Start
2 Rest Area
3 Water Supply
4 Rest Area
5 Water Supply
6 Destination

☰=↵ ▲▼ 🚴=GO

### Check Points

The details of check points in one track.

**Bicycle Trip**  
CO2↓ 0.86kg  
Tree 1.2  
Check points 6

---

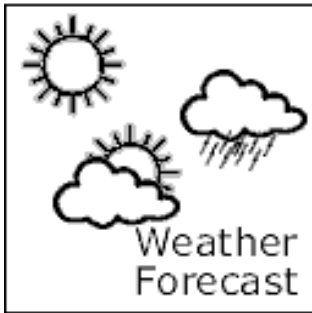
●=REV ▲▼ =CPT

## Reverse Course

Reverse the order of check points in one track

Example: Go from the track's finish to the starting point instead.

## Weather Forecast Mode

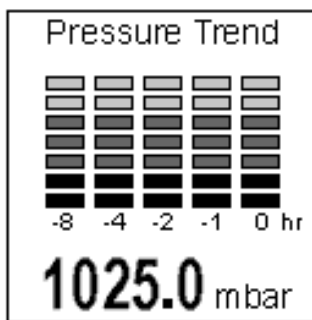


### Weather Forecast

Displays sunrise/sunset time, temperature and air pressure.



The sunrise/sunset time, temperature and forecasted weather in three hours' time for the current location.

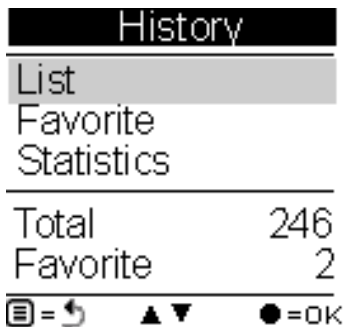


Air pressure trend over time

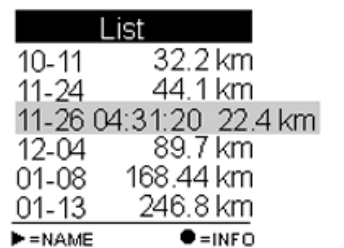
## History Mode



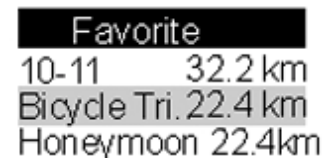
History shows track details



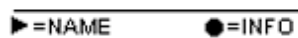
Displays total number of tracks. Tracks can also be set as Favorite.



Track List records track time and distance.



Favorite



The statistics for all tracks or favorites.



List	1 Day
DST	55.4 km
TIME	00:00:32
SPD <sub>MAX</sub>	24.4 kmh
CAL	1405
CO2	265
Tree	110

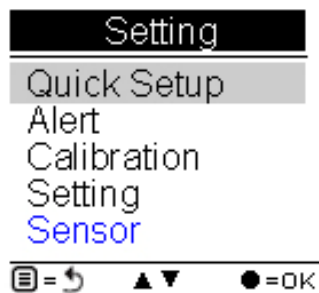
☰ = ↻    ◀▶

Track statistics. Use the left and right buttons to cycle between different intervals (1 day, 2 days... etc.)

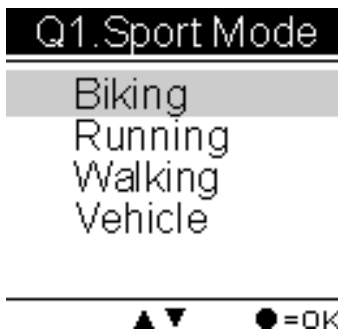
## Setting Mode




Various setting information





## Setting Menu




Quick Setup Item 1 – set Sport mode

 Bicycle Mode: Calculate the calories consumed while cycling

 Running mode: Calculate the calories consumed while running

 Walking mode: Calculate the calories consumed while walking

 Vehicle mode: Calories are not counted in Vehicle mode



Q2. Weight

Quick Setup Item 2 – set user weight

060.0 Kg



Q3. Odometer

Quick Setup Item 3 – total distance

Odometer A=ODA  
Odometer B=ODE



Menu

Set Alert

Quick Setup  
Alert  
Calibration  
Setting



Alert

Different types of alert can be set.

Time  
Speed  
Distance  
Altitude  
Reset All

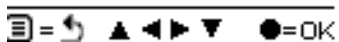


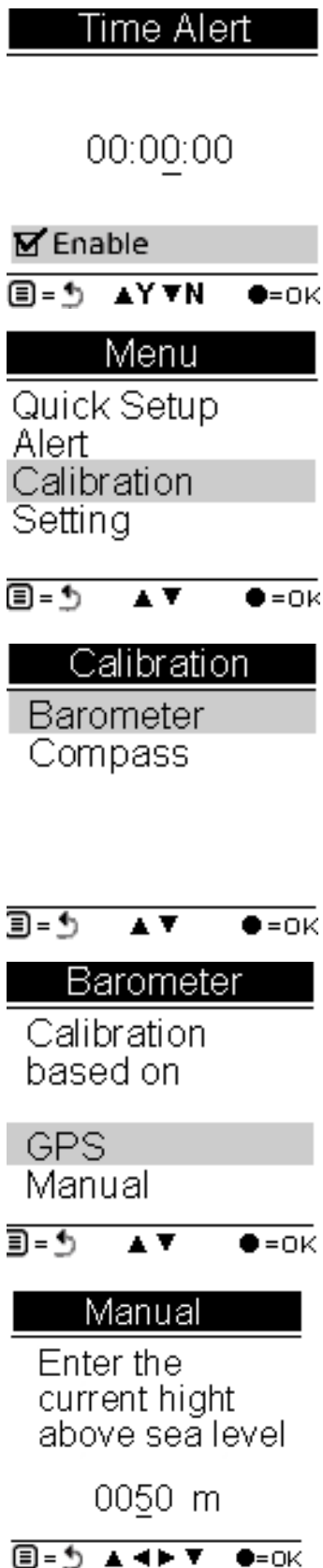
Time Alert

Use the cursor buttons to set the values.

00:00:00

Enable





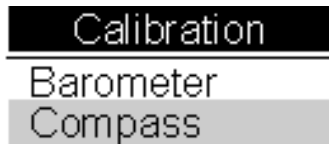
Tick the Enable option below to activate the alarm.

Sensor calibration

Calibrate barometer

Use GPS to calculate the correct altitude.

Manually enter the correct altitude.



## Calibrate compass

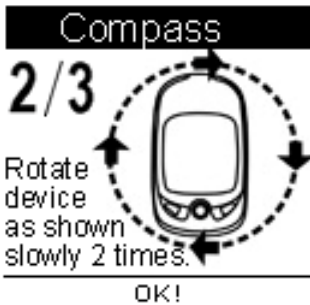


Step 1: Place GPSport 260 on a level surface

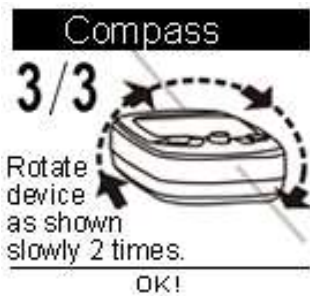
Place the device on a level surface and press ●



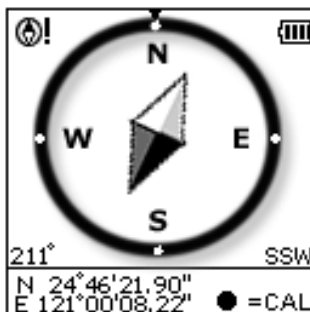
Step 2: Horizontally rotate the GPSport 260



Step 3: Vertically rotate the GPSport 260



The compass will be displayed if calibration was successful.



**Menu**

Quick Setup  
Alert  
Calibration  
Setting

☰=↻ ▲▼ ●=OK

**Setting**

General  
Log  
GPS  
System

☰=↻ ▲▼ ●=OK

**General**

Speed Meter  
Set Backlight  
Auto Flip Page  
Memory Mode  
Auto Power Off

☰=↻ ▲▼ ●=OK

**Speed Meter**

Show Speed Meter  
User Define

☰=↻ ▲▼ ●=OK

**Backlight**

Always on  
10 sec  
30 sec  
60 sec  
120 sec

☰=↻ ▲▼ ●=OK

Other Settings

General Settings

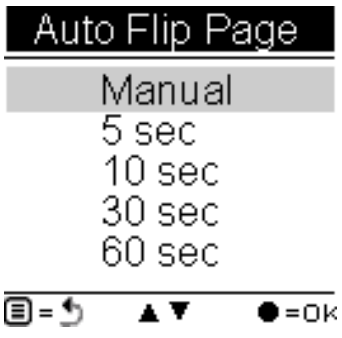
General settings include the Speed Meter, Backlight, Auto Flip Page, Memory Mode and Auto Power Off.

Set Speed Meter

Set the information for the Speed Meter to display

Set Backlight

Set how long the backlight should be on for



### Auto Flip Page

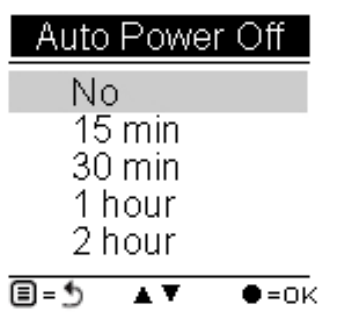
Set number of seconds between auto page flips



### Memory Mode

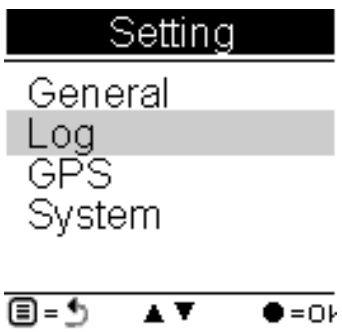
Overwrite: Automatically write over old memory when track log is full

Full Stop: Stop recording when track log is full

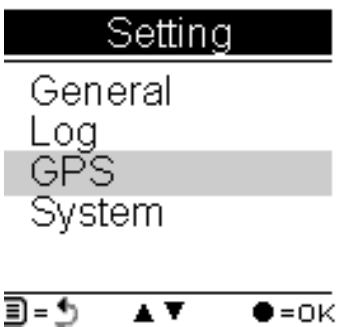


### Auto Power Off

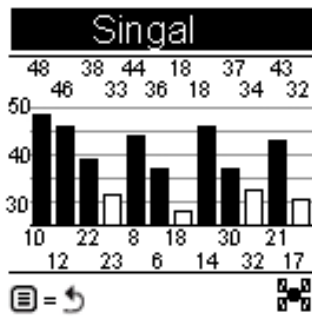
Set how long after GPS signal is lost before automatically powering off.



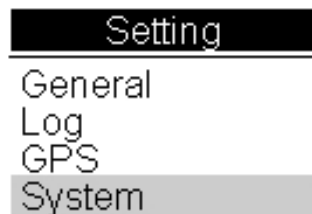
### Log Settings



### GPS Settings



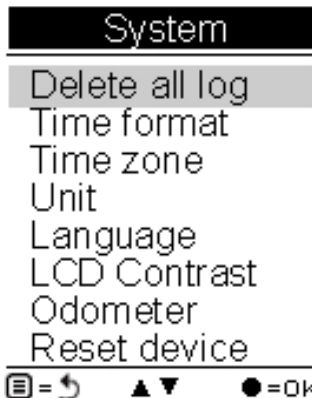
The Signal page shows the name and strength of satellite signals currently being picked up.



## System Settings



System settings include Time Format, Time Zone, Unit, Language, LCD Contrast, Odometer, Delete all log and Reset Device.



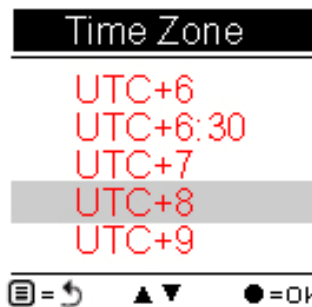
## Set Time Format

Select time format to display.



## Set Time Zone

Select your time zone.





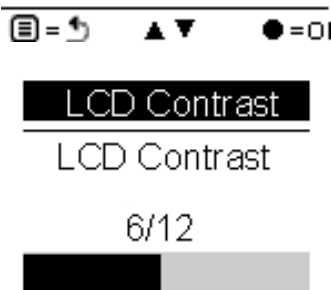
### Set Unit

Select unit of measurement to display.



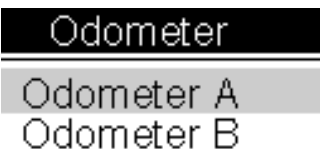
### Set Language

Select display language.



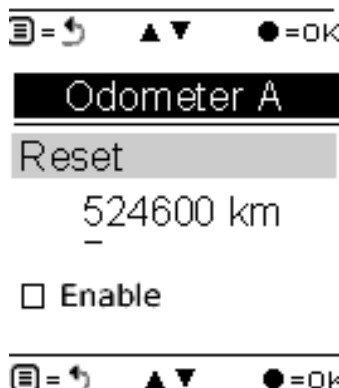
### Set LCD Contrast

Select LCD contrast



### Set Odometer

Select total distance to set



### Odometer

Reset sets odometer back to zero. The total distance can also be edited using the Up, Down, Left and Right buttons. Tick the Enable option to continue adding total distance traveled.

**Reset Device**

Reset to  
factory setting.

Are you sure?



=



● =OK

Reset Device

Reset device to factory default



## **Normal Care and Maintenance**

To ensure the unit's normal operation and extended life span, please note the following while using and storing:

### **Keep dry**

This product is not waterproof. If it comes into contact with water spray or is submerged it will seriously damage the components, resulting in irreversible damage.

### **Do not drop the unit**

If violently impacted or shocked, serious damage may be caused.

### **Avoid sudden temperature changes**

Condensation may occur when entering a warm room on a cold day. To prevent condensation from damaging the unit, please place into an airtight plastic bag before sudden temperature changes.

### **Keep away from strong magnetic fields**

When using or storing, please keep away from strong electromagnetic/radioactive or magnetic field equipment.

### **Operating temperature**

The products operating temperature is between 0°C ~ 40°C; please do not operate under extreme temperatures.

### **Avoid exposure to sunlight**

Please avoid long periods of sunlight or high temperature exposure.

## **Using the stylus**

The LCD screen is easily scratched; please use only the stylus for operation. Do not use any other sharp objects on the screen to avoid damaging the LCD screen.

## **Cleaning the screen**

Using a soft clean cloth to wipe the screen is recommended; do not use ordinary tissue to wipe the screen.

## **Do not disassemble**

Please do not disassemble the product, this may void the warranty and damage the unit.

## **Storage**

When the product is not being used for a long period, store the device in a cool and dry place. For long-term storage, keeping the unit in a dry box is recommended.

Please do not keep the product in the following environments:

1. Unventilated and humid locations.
2. In a car window that is exposed to excessive amounts of sunlight.
3. In an environment where humidity is over 90%.

## Specifications

<b>GPS Chip</b>	<p>Chipset: MTK 3329</p> <p>Cold Start: 36 sec</p> <p>Warm Start: 33 sec</p> <p>Hot Start: 1 sec</p> <p>Refresh Rate: &lt; 1 second continuously</p>
<b>Dimensions</b>	81.7x 54x 22 mm
<b>Weight</b>	<72g
<b>Battery</b>	Rechargeable 1050 mAh lithium battery
<b>Button</b>	<p>2 buttons + 1 keypad:</p> <p>Menu / Power / Direction keys</p>
<b>Antenna</b>	Built-in patch antenna
<b>IO Interface</b>	Mini USB
<b>Sensor</b>	2.4G wireless heart sensor and pedometer
<b>Display</b>	<p>High-contrast electro-luminescent backlit display, 4-level grayscale LCD.</p> <p>Dimensions: 33.5 × 33.5 mm, 1.8"</p> <p>Resolution: 128 x 128 pixels</p>
<b>Environmental Temperature</b>	<p>Operating Temperature: -10°C to 60°C</p> <p>Storage Temperature: -20°C to 70°C</p>
<b>Water proof</b>	IPX7
<b>Supported Languages</b>	English