

U S E R ' S M A N U A L

T60H835

Mini-PCI Type IIIB 802.11a/b/g WLAN CARD

Ambit Microsystems Corporation

5F-1, 5 Hsin-An Rd., Hsinchu Science-Based Industrial Park, Hsinchu, Taiwan, R.O.C.
TEL: 886-3-5784975, FAX: 886-3-5782924, Internet: Ambit@shts.seed.net.tw

Canadian Regulatory Wireless Notice

Operation is subject to the following two conditions: (1) this device may not cause interference, and (2) this device must accept any interference, including interference that may cause undesired operation of the device.

To prevent radio interference to the licensed service, this device is intended to be operated indoors and away from windows to provide maximum shielding. Equipment (or its transmit antenna) that is installed outdoors is subject to licensing.

To prevent radio interference to the licensed service (i.e. co-channel Mobile Satellite systems) this device is intended to be operated indoors and away from windows to provide maximum shielding. Equipment (or its transmit antenna) that is installed outdoors is subject to licensing. Operation in 5150-5250 MHz is exclusively for indoor usage to reduce potential for harmful interference to co-channel Mobile Satellite systems.

When using antennas with a gain greater than 0dBi at 5250-5350 MHz, the maximum permitted EIRP level for this frequency may not be exceeded. Because high power radars are allocated as primary users (meaning they have priority) in 5250-5350 MHz, these radars could cause interference and/or damage to license exempt LAN devices.

The installer of this radio equipment must ensure that the antenna is located or pointed such that it does not emit RF field in excess of Health Canada limits for the general population; consult Safety Code 6, obtainable from Health Canada's website www.hc-sc.gc.ca/rpb

Contents

SECTION ONE: INTRODUCTION.....	1
1-1 FEATURES.....	1
1.1.1 WIRELESS LAN FUNCTION	1
1-2 FCC NOTICE.....	3
1.2.1 FCC COMPLIANCE	3
1.2.2 FCC CLASS B STATEMENT	4
CANADIAN REGULATORY WIRELESS NOTICE	5
EUROPEAN UNION NOTICE.....	5
SECTION TWO: WIRELESS LAN INSTALLATION.....	6
2-1 SYSTEM REQUIREMENTS.....	6
2-2 INSTALLATION AND UNINSTALL PROCESS.....	6
SECTION THREE: WIRELESS UTILITY AND CONFIGURATION.....	11
3-1 WINDOWS 98SE/NT4/2000/XP WIRELESS UTILITY	11
3-2 CURRENT STATUS TAB.....	11
3-3 PROFILE MANAGEMENT	13
3-3-1 <i>Create or Modify a Profile</i>	14
3-3-2 <i>Security Settings in Profile Management</i>	16
3-3-3 <i>Advanced settings in Profile Management</i>	18
SECTION FOUR: WINDOWS XP WIRELESS UTILITY AND CONFIGURATION	20
4-1 WINDOWS XP WIRELESS UTILITY	20
APPENDIX A GLOSSARY.....	27

The information contained in this manual has been verified at the time of this manual printing. The manufacturer reserves the right to make any changes and improvements in the product described in this manual at any time and without notice.

All registered trademarks are the property of their respective owners.

Section One: Introduction

Ambit Wireless Mini-PCI Module complied with IEEE 802.11a/b/g Standard, it can be used to provide a variety of low-cost wireless network interface card to connect your wireless LAN via fitting into the Mini-PCI Type III slot. The Wireless Mini-PCI Module that complies with this specification and combines networking with high-speed Internet access will let people connect to the Internet anywhere, anytime.

With seamless roaming, fully interoperability and advanced security with WEP standard, Wireless Mini-PCI Module can allow user to switch to different vendors' Access Points through the wireless networks and to prevent from eavesdropping.

1-1 Features

1.1.1 Wireless LAN Function

802.11a

Wireless LAN Compliance	IEEE 802.11a
Operating Frequency	5.15~5.25GHz (lower band) for US/Canada/Japan 5.25~5.35GHz (middle band) for US/Canada 5.725~5.825GHz (high band) for US
Modulation Schemes	OFDM, QPSK, BPSK, 16-QAM and 64-QAM
WLAN Data Rate	54Mbps with fall back rates of 48, 36, 24, 18, 12, 9, and 6Mbps
Media Access Protocol	CSMA/CA with ACK
Transmitter Output Power	Typical 12 dBm for 54Mbps Typical 13 dBm for 48Mbps Typical 16 dBm for 36Mbps Typical 17 dBm for 24, 18, 12, 9, 6Mbps
Receiver Sensitivity	Typical -72 dBm for 54Mbps @ 10% PER Typical -75 dBm for 48Mbps @ 10% PER Typical -80 dBm for 36Mbps @ 10% PER Typical -84 dBm for 24Mbps @ 10% PER Typical -87 dBm for 18Mbps @ 10% PER

	Typical –89 dBm for 12Mbps @ 10% PER
	Typical –91 dBm for 9Mbps @ 10% PER
	Typical –91 dBm for 6Mbps @ 10% PER
Current Consumption	550mA at transmit mode (typically)
	310mA at receive mode (typically)

802.11b

Radio Technology	IEEE 802.11b Direct Sequence Spread Spectrum
Operating Frequency	2412 ~ 2484MHz ISM band
Modulation Schemes	DQPSK, DBPSK and CCK
Channel Numbers	IEEE 802.11b compliant
	11 channels for United States
	13 channels for Europe Countries
	14 channels for Japan
Data Rate	11Mbps with fall back rates of 5.5, 2, and 1Mbps
Spreading	11-chip Barker Sequence
Media Access Protocol	CSMA/CA with ACK
Transmitter Output Power	15dBm typically
Receiver Sensitivity	Typical –83dBm for 11Mbps @ 8% PER
	Typical –85dBm for 5.5Mbps @ 8% PER
	Typical –86dBm for 2Mbps @ 8% PER
	Typical –90dBm for 1Mbps @ 8% PER
Current Consumption	500mA at transmit mode (typically)
	350mA at receive mode (typically)
	40mA at normal power saving mode (typically)
	30mA at max power saving mode (typically)

802.11g

Radio Technology	IEEE 802.11b/g draft standard compliant
Operating Frequency	2412 ~ 2484MHz ISM band
Modulation Schemes	OFDM, DQPSK, DBPSK and CCK
Channel Numbers	11 channels for United States
	13 channels for Europe Countries

	14 channels for Japan
Data Rate	54Mbps with fall back rates of 48, 36, 24, 18, 12, 9, and 6Mbps
Media Access Protocol	CSMA/CA with ACK
Transmitter Output Power	Typical 15 dBm for 54Mbps Typical 16 dBm for 48Mbps Typical 17 dBm for 36Mbps Typical 18 dBm for 24, 18, 12, 9, 6Mbps Typical 19dBm for 11, 5.5, 2, 1Mbps
Receiver Sensitivity	Typical -76 dBm for 54Mbps @ 10% PER Typical -79 dBm for 48Mbps @ 10% PER Typical -83 dBm for 36Mbps @ 10% PER Typical -87 dBm for 24Mbps @ 10% PER Typical -90 dBm for 18Mbps @ 10% PER Typical -91 dBm for 12Mbps @ 10% PER Typical -91 dBm for 9Mbps @ 10% PER Typical -91 dBm for 6Mbps @ 10% PER
Current Consumption	510mA at transmit mode (typically) 320mA at receive mode (typically)

1-2 FCC Notice

1.2.1 FCC Compliance

This Equipment complies with Part 68 of the FCC Rules. On this equipment is a label that contains, among other information, the FCC registration number and Ringer Equivalence Number (REN) for this equipment. You must, upon request, provide this information to your telephone company.

If your telephone equipment causes harm to the telephone network, the Telephone Company may discontinue your service temporarily. If possible, they will be notify in advance. But if advance notice isn' t practical, you will notified as soon as possible. You will be informed of your right to file a complaint with the FCC.

Your telephone company may make changes in its facilities, equipment, operations or

procedures that could affect proper operation of your equipment. If they do, you will be notified in advance to give you an opportunity you maintain uninterrupted telephone service. The FCC prohibits this equipment's should fail to operate properly, disconnect the equipment from the phone line to determine if it is causing the problem. If the problem is with the equipment, discontinue use and contact your dealer or vendor.

1.2.2 FCC Class B Statement

This equipment has been tested and found to comply with the limits for a Class B digital device, pursuant to Part 15 of the FCC Rules. These limits are designed to provide reasonable protection against harmful interference in a residential installation. This equipment generates, uses and can radiate radio frequency energy, and if not installed and used in accordance with the instructions, may cause harmful interference will not occur in a particular installation. If this equipment does cause harmful interference to radio or television reception, which can be determined by turning the equipment off and on, the user is encouraged to try to correct the interference by one or more of the following measures:

- Reorient or relocate the receiving antenna
- increase the separation between the equipment and the receiver
- Connect the equipment into an outlet on a circuit different from that to which the receiver is connected
- Consult the dealer or an experienced radio/TV technician for help

This device complies with Part 15 of the FCC Rules. Operation is subject to the following two conditions: (1) This device may not cause harmful interference, and (2) this device must accept any interference received, including interference that may cause undesired operation. FCC Caution: Any changes or modifications not expressly approved by the party responsible for compliance could void the user's authority to operate this equipment.

IMPORTANT NOTE:

FCC Radiation Exposure Statement:

This equipment complies with FCC radiation exposure limits set forth for an uncontrolled environment. This equipment should be installed and operated with minimum distance 20cm between the radiator & your body.

This device is intended only for OEM integrators under the following conditions:

- 1) The antenna must be installed such that 20 cm is maintained between the antenna and users, and
- 2) The antenna should be integral if the end device is intended to be operated in 5.15 ~ 5.25GHz frequency range.

As long as 2 conditions above are met, further transmitter test will not be required.

However, the OEM integrator is still responsible for testing their end-product for any additional compliance requirements required with this module installed (for example, digital device emissions, PC peripheral requirements, etc.).

IMPORTANT NOTE: In the event that these conditions can not be met (for example certain laptop configurations or co-location with another transmitter), then the FCC

authorization is no longer considered valid and the FCC ID can not be used on the final product. In these circumstances, the OEM integrator will be responsible for re-evaluating the end product (including the transmitter) and obtaining a separate FCC authorization.

End Product Labeling

This transmitter module is authorized only for use in device where the antenna may be installed such that 20 cm may be maintained between the antenna and users (T60H835). The final end product must be labeled in a visible area with the following: ‘FCC ID: MCLT60H835 ’.

Manual Information That Must be Included

The OEM integrator has to be aware not to provide information to the end user regarding how to install or remove this RF module in the users manual of the end product which integrate this module.

The users manual for OEM integrators end users must include the following information in a prominent location “ IMPORTANT NOTE: To comply with FCC RF exposure compliance requirements, the antenna used for this transmitter must be installed to provide a separation distance of at least 20 cm from all persons and must not be co-located or operating in conjunction with any other antenna or transmitter”.

If the end product integrating this module is going to be operated in 5.15 ~ 5.25GHz frequency range, the warning statement in the user manual of the end product should include the restriction of operating this device in indoor could void the user’ s authority to operate the equipment

Notice: (1)Shielded cables, if any, must be used in order to comply with the emission limits. (2) Any change or modification not expressly approved by the grantee of the equipment authorized could void the user authority to operate the equipment.

Caution: For your health sake, please keep at least 20 cm away from your Notebook LCD Panel while using wireless LAN.

For products marketed in the USA, the 2.4 GHz frequency band is limited to provide only 11 channels, achieved by software controlled in the USA.

European Union Notice

Products bearing the CE marking comply with the R&TTE Directive (1999/5/EC), EMC Directive (89/336/EEC) and the Low Voltage Directive (73/23/EEC) issued by the Commission of the European Community.

Section Two: Wireless Lan Installation

2-1 System Requirements

In order to install Wireless LAN driver and Utility and use the Wireless LAN card in your notebook computer.

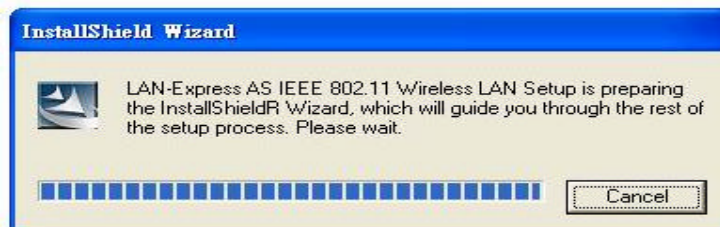
Your notebook system must meet the following requirements:

- Ambit Mini-PCI Wireless LAN Card already inserted
- Windows 98SE,2K,ME,XP OS Support

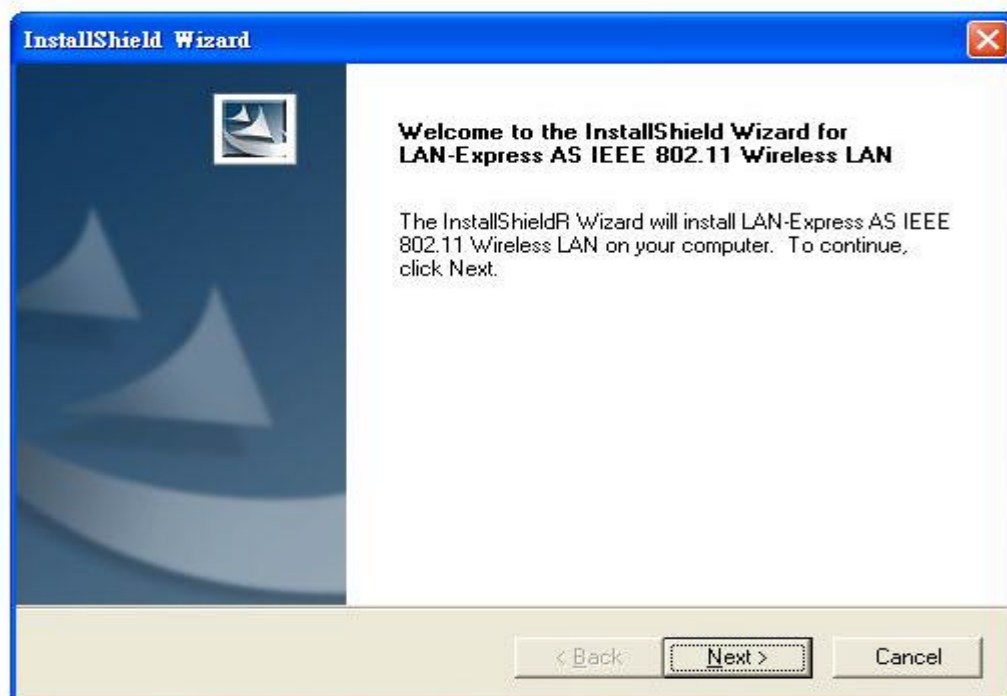
2-2 Installation and Uninstall Process

Install Wireless LAN (Windows 98/2K/ME/XP)

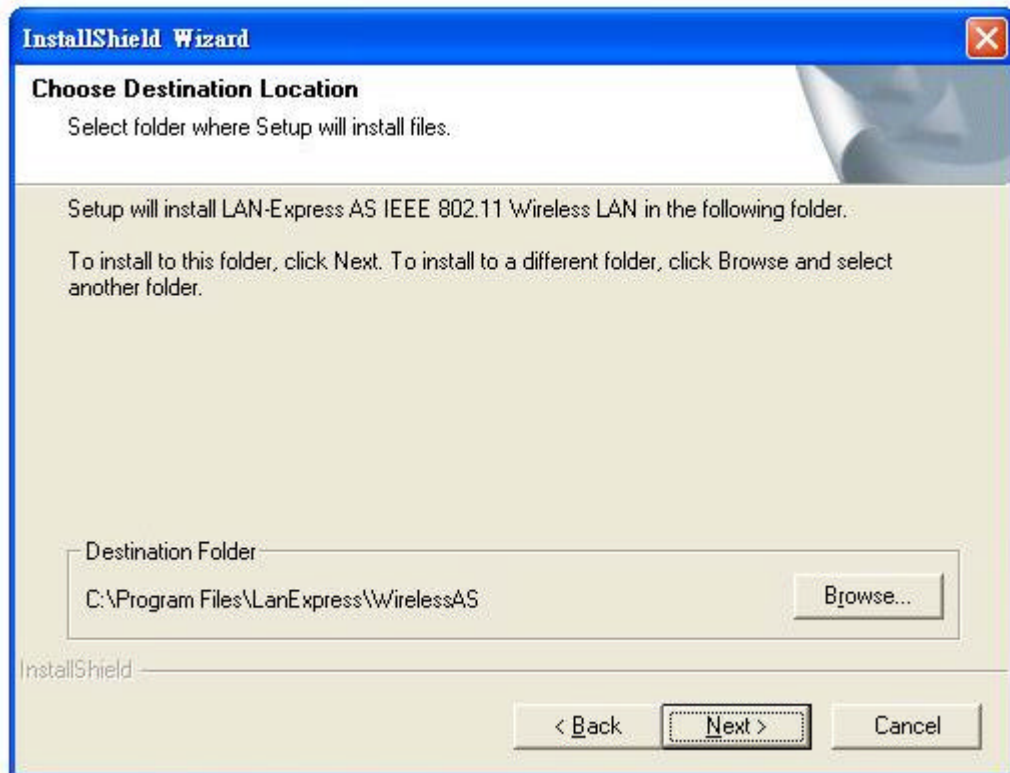
1. While starting the Windows system, if it detect the 802.11a/b card exist, then it will pop up the following message to start Install process.



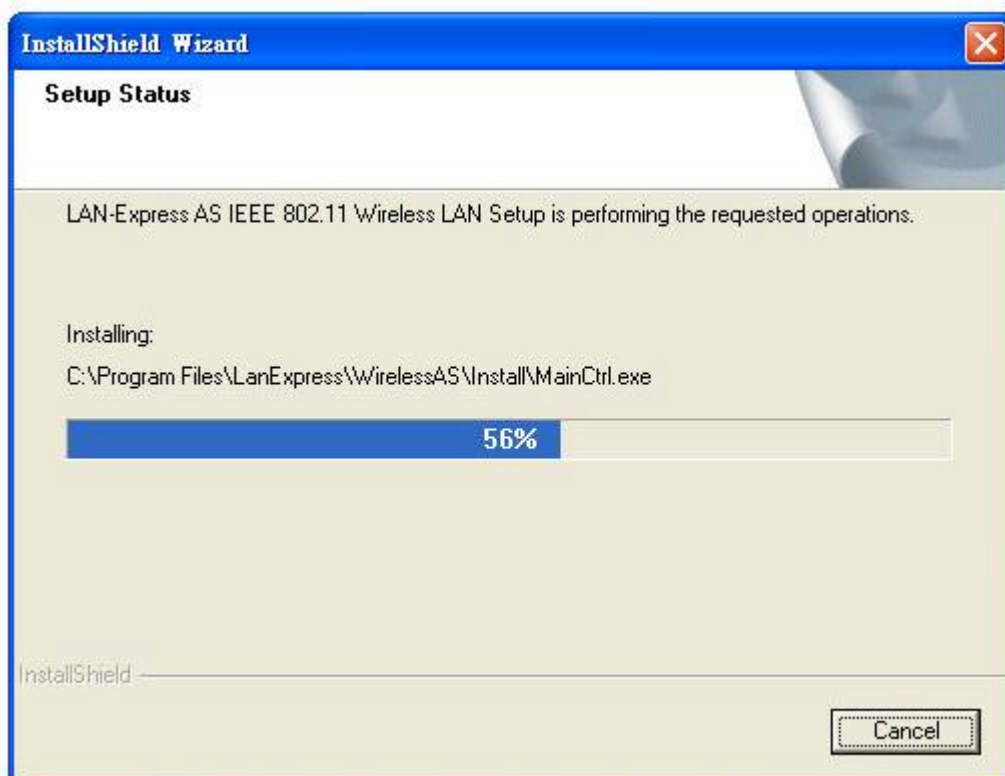
2. You can execute the program 'Setup.exe' in the CD. Windows displays the dialog as below. Press 'Next' button to continue.



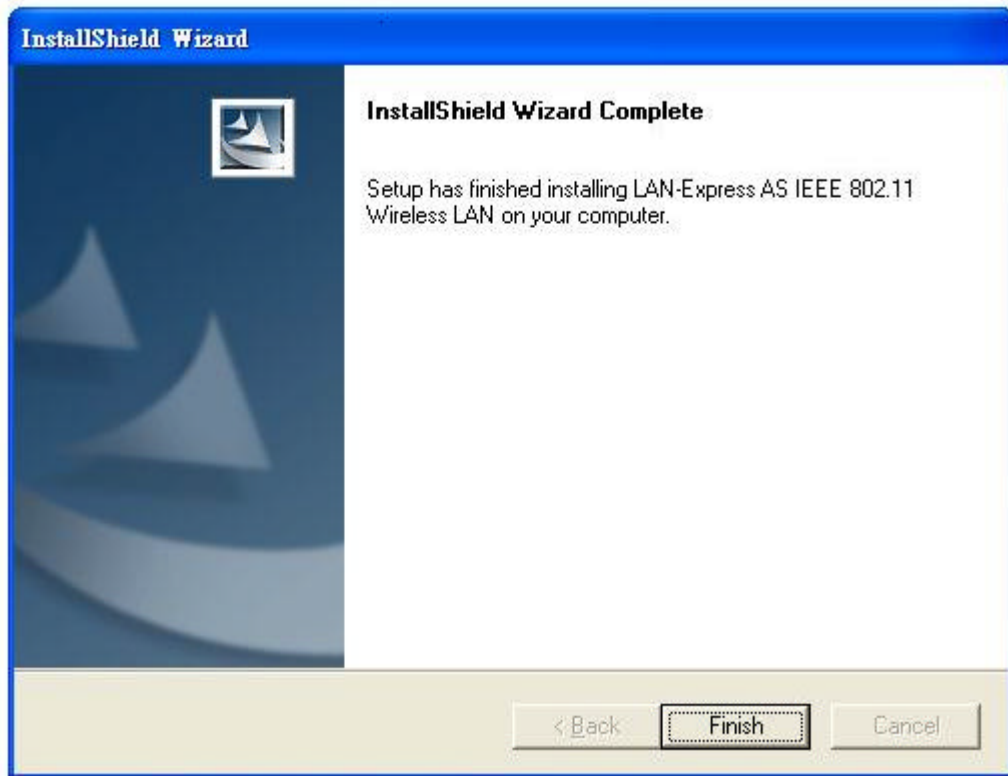
3. Select the destination folder that you want to place the files.



4. Wait for the install program to do the installation.



5. Congratulations! Wireless LAN has been installed successfully. Please click **'Finish'** to complete setup and go to the next step. Please remove any disks from any drives before your click **'Finish'**.

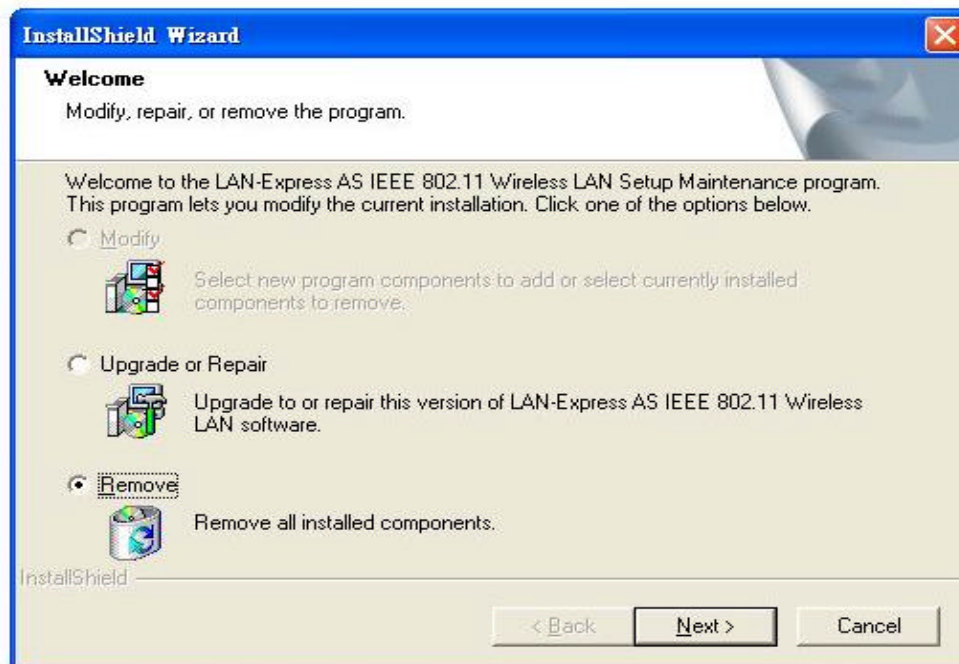


Uninstall Wireless LAN (Windows 98/2K/ME/XP)

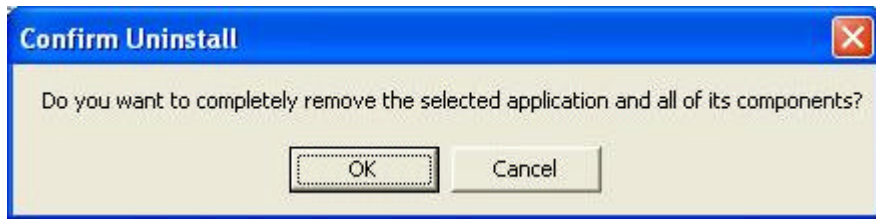
1. One can remove the Wireless LAN via the 'Add or Remove Programs' in the 'Control Panel'. Click '**Change or Remove Programs**' button and select 'Wireless LAN', the dialog as below displays. Then click '**Change/Remove**' button to perform the un-installation.



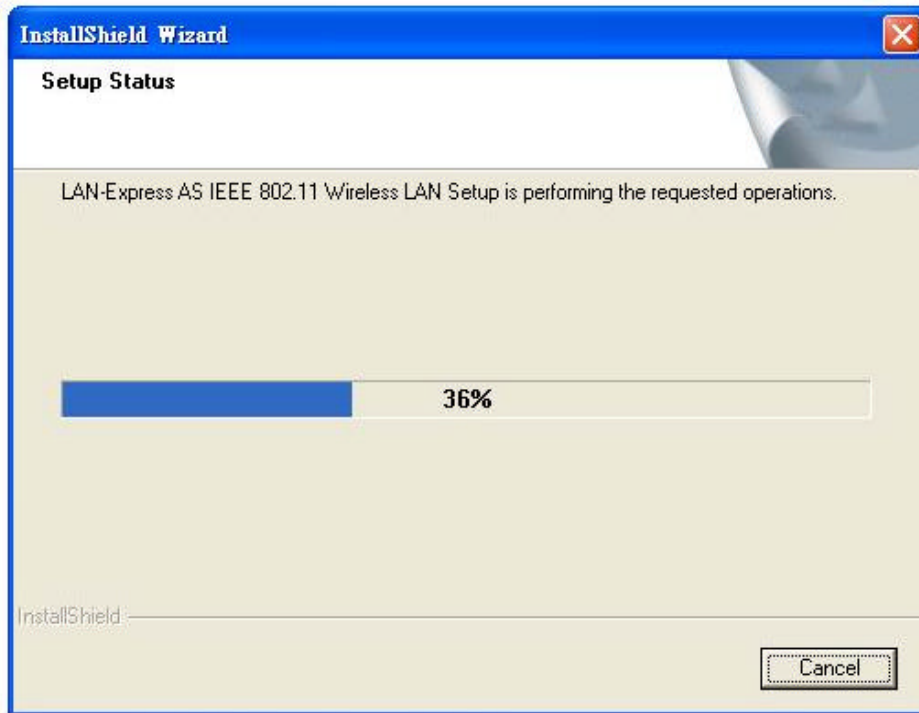
2. Select 'Remove' and then click the 'Next' button to perform the un-installation. Click 'OK' button if you really want to remove the Wireless LAN.



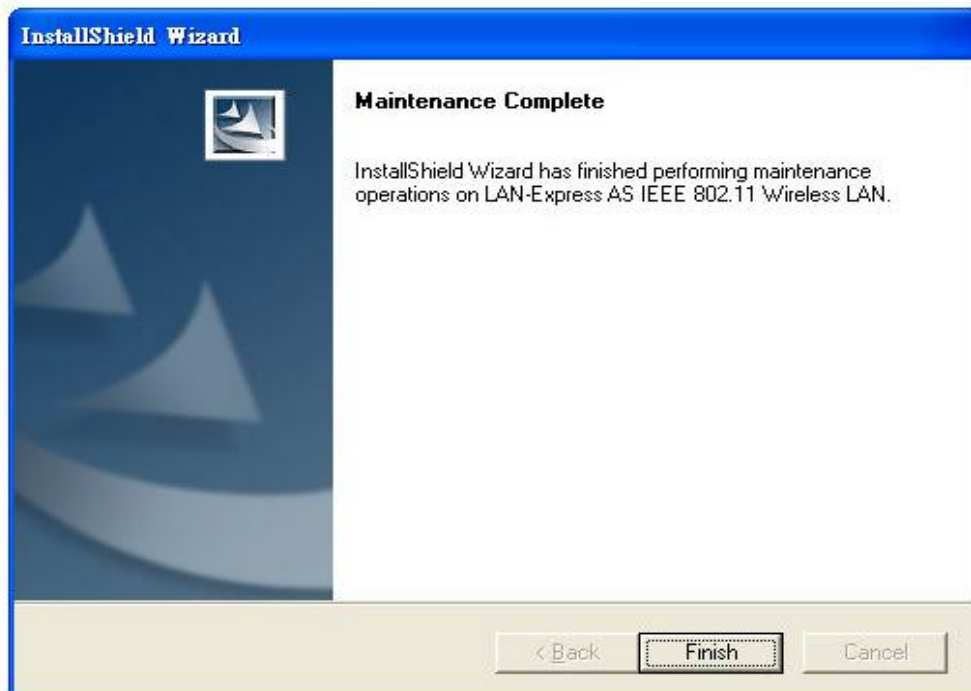
3. Click **'OK'** button if you really want to remove the Wireless LAN.



4. Wait for the un-installation to do its work.



5. Click **'Finish'** to complete the un-Installation.



Section Three: Wireless Utility and Configuration

The following sections describe the Wireless Network Configuration Utility. This utility provides quick access and friendly interface to configure the card setup.

3-1 Windows 98SE/NT4/2000/XP Wireless Utility

After installation is completed, a Wireless LAN Utility icon will appear in the system tray each time your computer is restarted. Click it, then you will see the display of Wireless Client Utility.

3-2 Current Status Tab

The current status tab displays the following information about your wireless connection.

- Profile Name – The current name of the selected configuration profile.
- Network Type – The current type of wireless network that is either Access Point or Ad-hoc.
- Current Mode – The current mode is the frequency and data rate that has been selected.
- Current Channel – Specifies the current channel that the WLAN 802.11a/b/g is connected to or scanning on.
- Link Status – The link can be either connected or disconnected to an Access point or other wireless client.
- Encryption Type – Describes whether or not the wireless traffic is encrypting.
- IP Address – The current IP address of the WLAN 802.11a/b/g

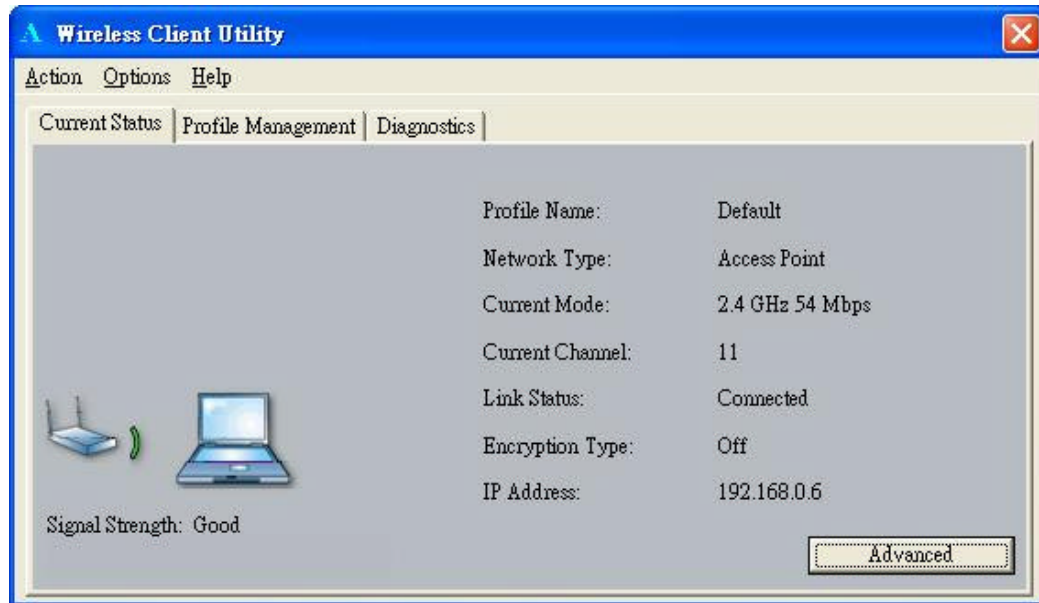


Figure 3-1

The Advanced button provides more detailed information regarding your wireless connection.

- Country – The country the card is set for.
- Transmit Power Level – Provides current setting of Radio output power.
- Network Name (SSID) – The wireless network name (SSID) that the device is currently connected with.
- Power Save Mode – The type of Power Savings that is configured on the device.
- Frequency – The current frequency that the Wireless device is connected or scanning on.
- Transmit Rate – The transmit rate (Mbps) for the current connection for the wireless driver.
- Receive Rate –The receive rate (Mbps) for the current connection for the driver.



Figure 3-2

3-3 Profile Management

The Profile Management tab allows the user to configure several different user defined profiles. Each profile can be configured to match the appropriate settings of a unique wireless network.

The Profile box lists all the configured profiles. The Details dialog describes the basic settings (SSID), Network Type, Security Mode) of the highlighted profile. The active profile will be displayed with the wireless icon next to it. To make a profile active, highlight the profile and click on the Activate button. By setting a Profile active, you configure the wireless device to search for wireless networks that match up to those specific profile wireless settings.

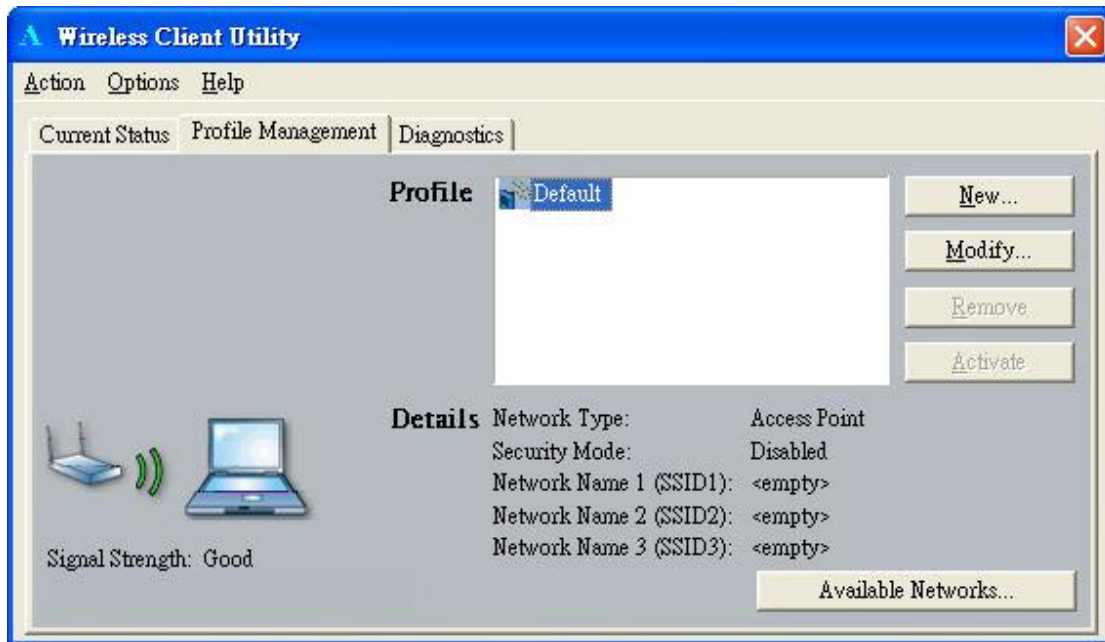


Figure 3-3

The Available networks button allows the user to view a list of all available wireless network that are within range of the WLAN 802.11a/b/g . Each wireless network entry displays the SSID, encryption settings, signal strength level, channel and wireless mode information. You can create a new profile utilizing Available networks button by highlighting the wireless network you want to create a profile for and clicking on the Activate button.

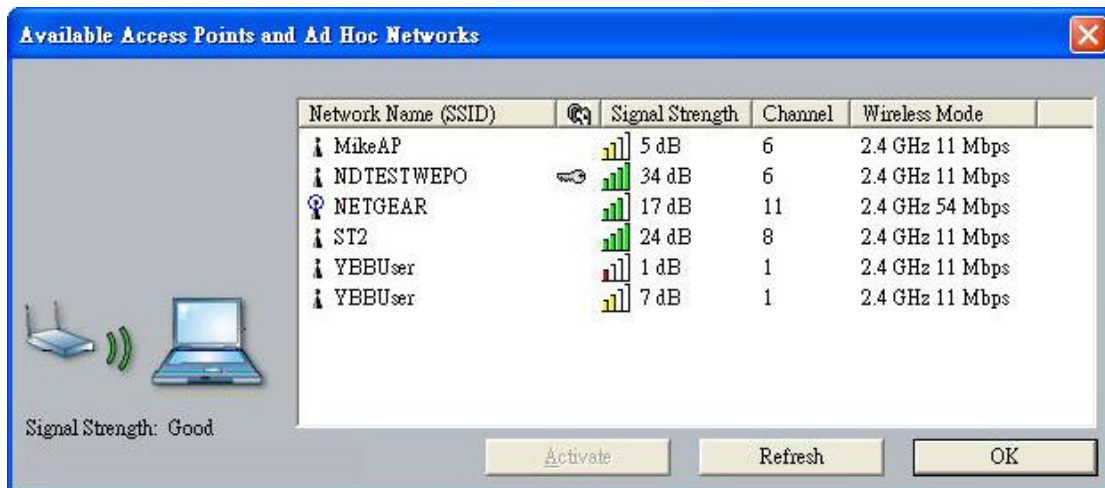


Figure 3-4

3-3-1 Create or Modify a Profile

1. From the Profile Management tab Click on the New or Modify button
2. The Network Configuration Settings dialog box will appear

3. In the Profile Name box, type in a unique name that describes the wireless network you are configuring the settings to connect to.
4. In the SSID boxes type in the SSID that matches up with the wireless network you are trying to configure the profile to connect with. There are three SSID selections (SSID1, SSID2, SSID3) available; this feature allows you to configure a single profile to match up to 3 different SSID' s.

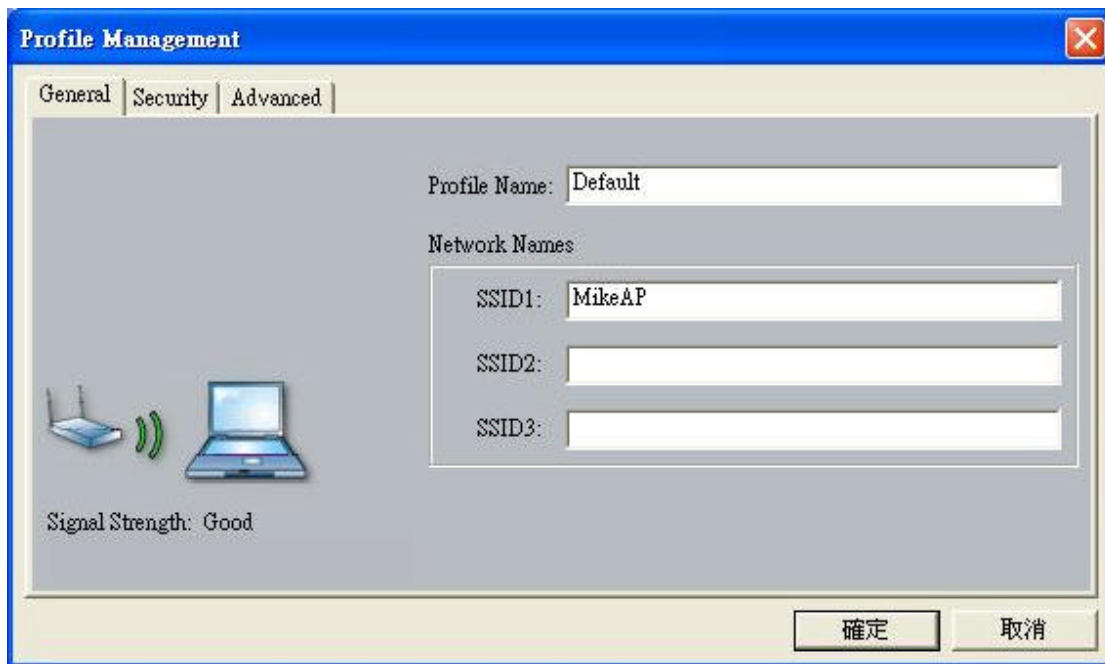


Figure 3-5

5. Select the Security Tab to manage the security settings associated with this profile



Figure 3-6

6. Choose the security setting that is required on the wireless network. Once the appropriate security mode is chosen the button next to the selection will enable you to include any additional information required by that security mode.

3-3-2 Security Settings in Profile Management

The Security Tab allows you to configure the WLAN 802.11a/b/g device to match the security settings of the Wireless LAN network.

Select the appropriate security mode

- **Pre-Shared Keys** – This mode is commonly referred to as WEP encryption, and allows for setting of all four WEP keys. The pre-shared key selection also allows for setting of a unique key, which is used with higher forms of encryption such as AES.
- **None** – Use this mode when there is no security authentication or encryption is currently enabled on your Wireless LAN network.



Figure 3-7

Setting Pre-Shared Keys

Pre-Shared keys can be defined using the “Define Pre-Shared Keys” box

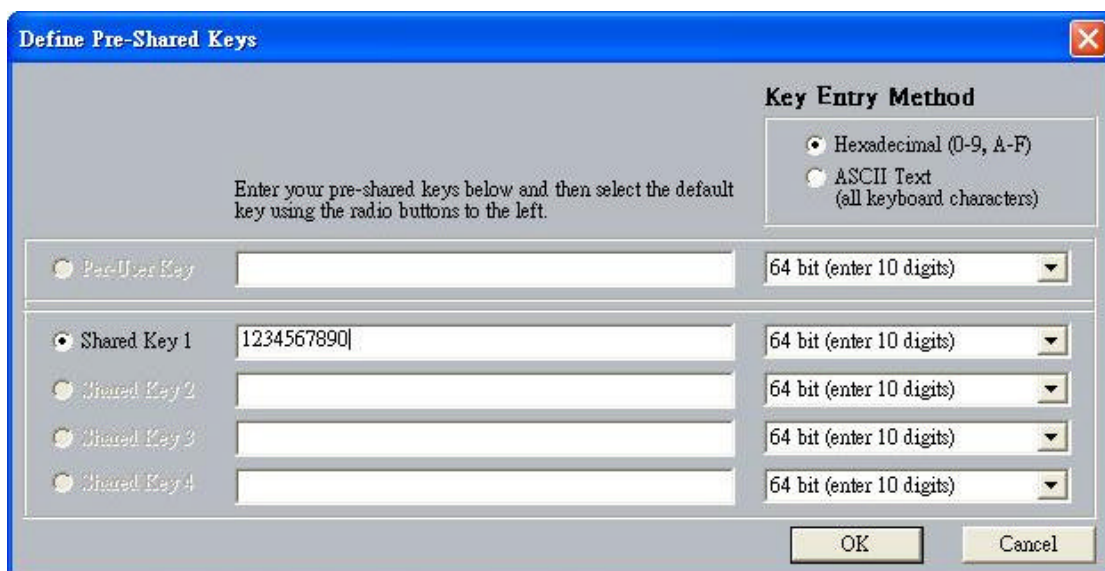


Figure 3-8

Key Entry Method – Determines the entry method for an encryption key:

- Hexadecimal (0-9, A-F)
- ASCII text (any keyboard characters, A-Z, 0-9).

Pre User Key – Defines the unique encryption key for network configuration security. The Pre User key is used with many authentication mechanism and encryption

Shared Keys – Determines a set of shared encryption keys (First, Second, Third, Fourth) used for wireless encryption and security. At least one Shared Key field must be populated to enable security using a shared key. If more than one key is defined then Click on the radio button to select a key as the default encryption key.

Key Length – The options for Key Length are

- 64 bit encryption (10 digits)
- 128 bit encryption (26 digits)
- 152 bit encryption (32 digits)

The number of available characters allowed to be entered in the encryption key field will automatically be determined by the Key length setting.

None

Select this mode when there is no authentication or encryption enabled on the wireless LAN network.

3-3-3 Advanced settings in Profile Management

The advanced tab provide more complex wireless settings and these settings should only be modified if there is a specific requirement on your wireless network.

- a. **Power Save Mode** - allows the user to minimize power utilized by the WLAN 802.11a/b/g device. Note: Setting Power Save Mode to enabled (Normal or Maximum) may cause the user to experience an extended connection delay of up to one minute.
- b. **Network Type** - allows the user to configure the WLAN 802.11a/b/g device as either an Ad-hoc or Access point type network
- c. **802.11b Preamble** - allows setting the preamble support to match up with the specified wireless network.
- d. **Transmit Power Level** - allows the user to modify the power output of the radio. Setting. Note: Setting this to any other value except 100% will decrease range of your WLAN 802.11a/b/g device.

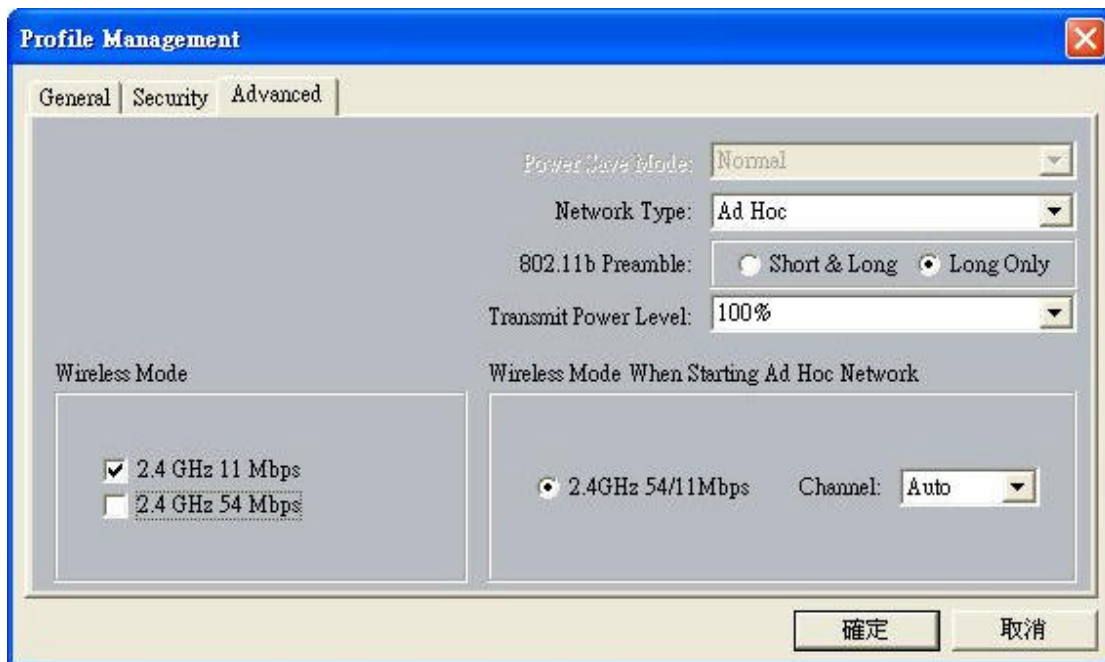


Figure 3-9

Wireless Mode Setting

The wireless Mode settings allow the user to specify which wireless frequency and data rate the wireless network is operating at. If all selections are chosen, the WLAN 802.11a/b/g device will automatically search all frequencies and data rates for wireless networks that match up to the profile settings.

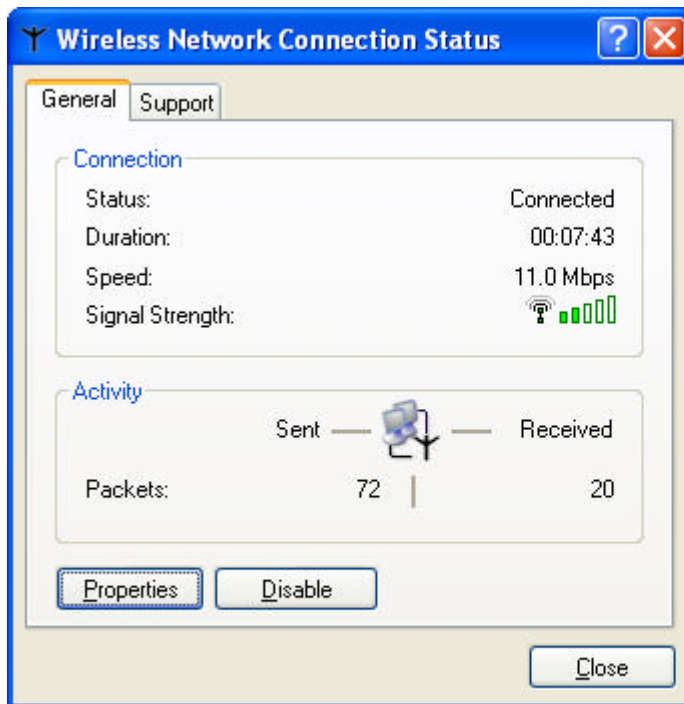
Wireless Mode when starting Ad-Hoc setting

The “Wireless Mode when starting ad-hoc setting” allows the user to determine the type of ad-hoc network to be started. Note: This setting will only take effect if there are no other ad-hoc networks with the same SSID currently operating within range. If existing ad-hoc networks with the same SSID are currently operating, then the WLAN 802.11a/b/g device will connect using the frequency and data rate provided by the exiting ad-hoc network.

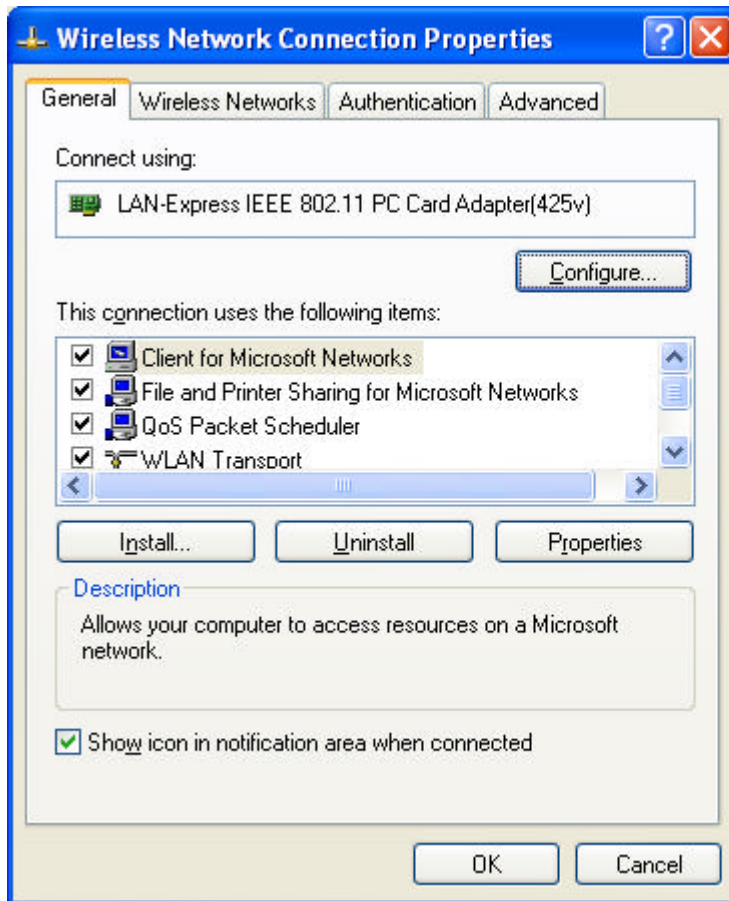
Section Four: Windows XP Wireless Utility and Configuration

4-1 Windows XP Wireless Utility

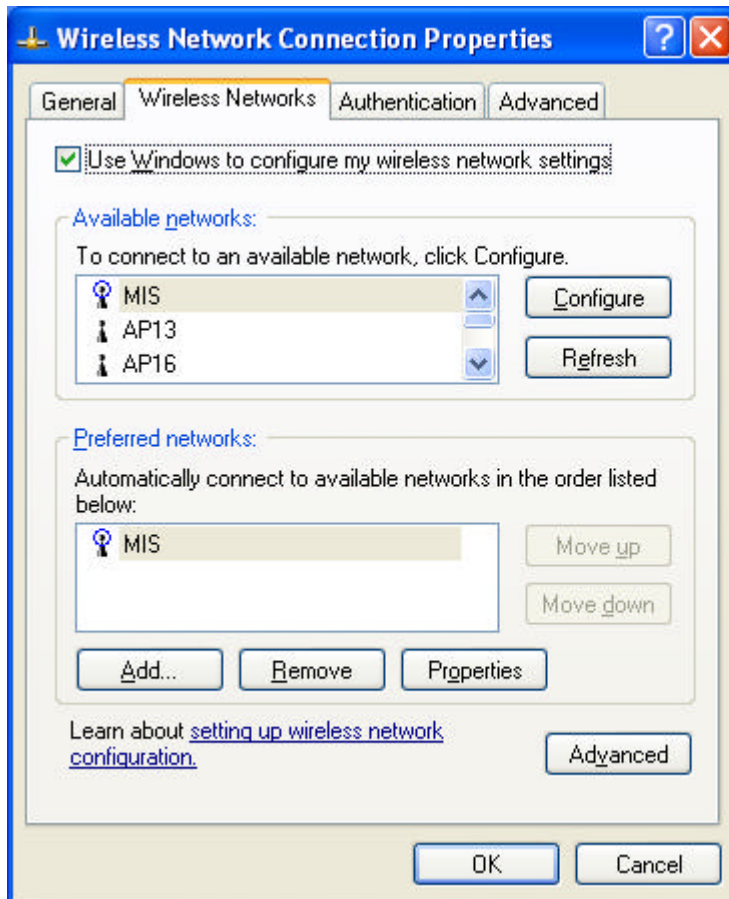
1. To configure the wireless card setting, you can select Start\Settings\Network Connection in the Windows XP. Choose the wireless network connection, then you will see below screen. From this screen, you can see wireless connection status and wireless signal level.



2. Select 'Properties' in the above screen. The following windows will show up. In 'General' page, Wireless LAN card information and networking protocol have been displayed. Extra networking protocol can be installed in this page.



3. Select Wireless Networks page, you can see available wireless networks in your nearby area. You can add your preferred wireless Access Point to your list, so your wireless card will search for specific wireless networks.



Configure

To connect to an existing access point (infrastructure) network, under Available networks, click the network name, and then click 'Configure' to setup wireless security and data encryption.

Refresh

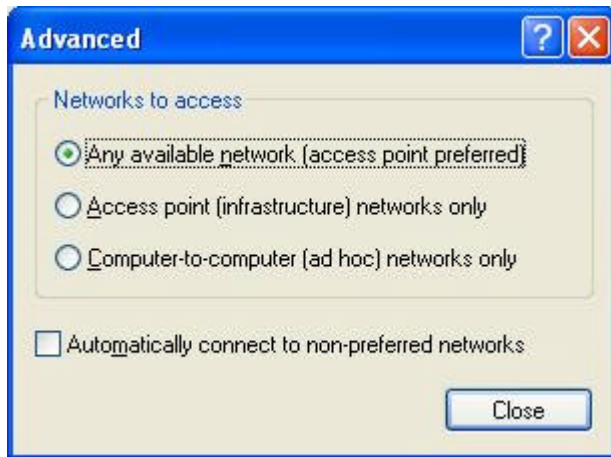
To update the list of available networks that are within range of your computer, click Refresh.

Add

To connect to an access point (infrastructure) network that you know is available but that does not appear under Available networks, under Preferred networks, click Add. In Wireless Network Properties, specify the network name (Service Set Identifier).

Remove

To remove a wireless network from the list of preferred networks.



Advanced

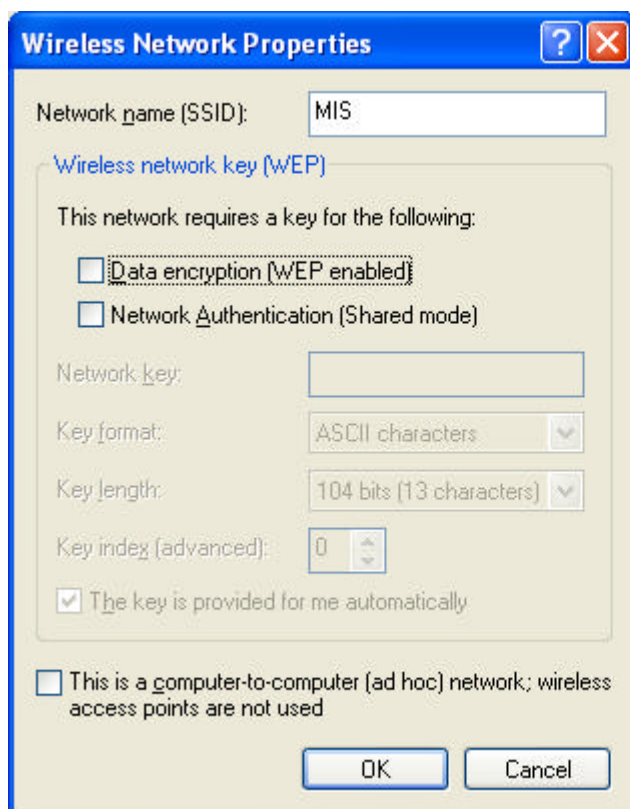
*If your network are configuring to a computer-to-computer (ad hoc) network, select ‘Computer-to-computer (ad hoc) network only’ .

*If you want to connect to a computer-to-computer and access point (infrastructure) networks are within range of your computer, click ‘ Access point (infrastructure)network only’ .

*If you want to connect to a computer-to-computer (ad hoc) network and both computer-to-computer and access point (infrastructure) networks are within range of your computer, click ‘ Any available network (access point preferred)’ .

To automatically connect to available networks that do not appear in the Preferred networks list, click Advanced, and then select the Automatically connect to non-preferred networks check box.

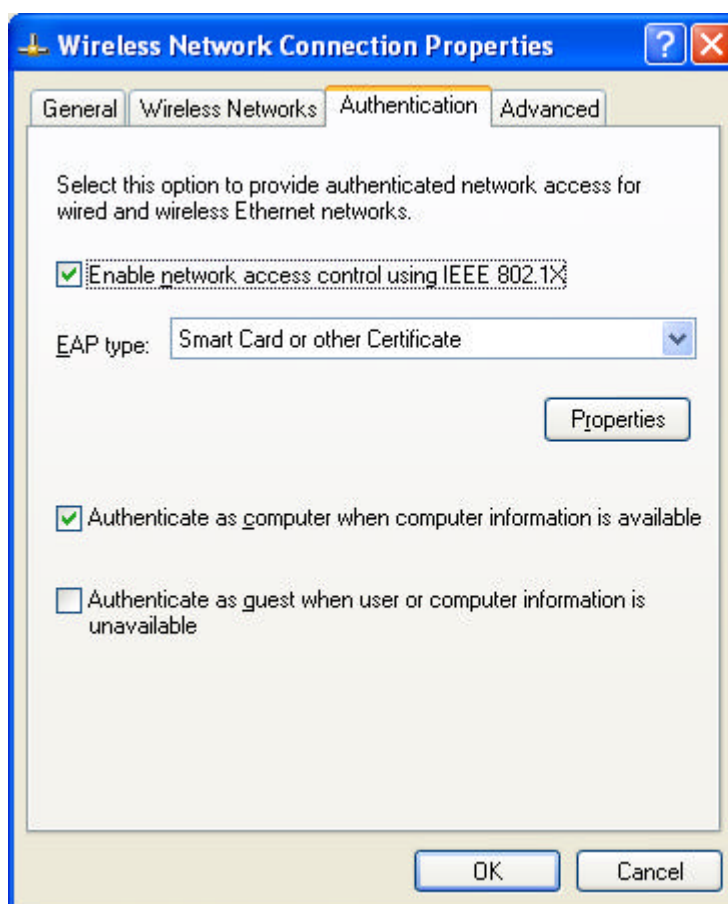
Define your network name (SSID) in the following windows, so you can join a specific wireless network. Check AP has WEP on or not. Your wireless network will need to have same WEP setting with AP in order to communicate. If your wireless network don't have any AP, check the **'This is computer-to computer (ad-hoc) network; wireless access points are not used'**



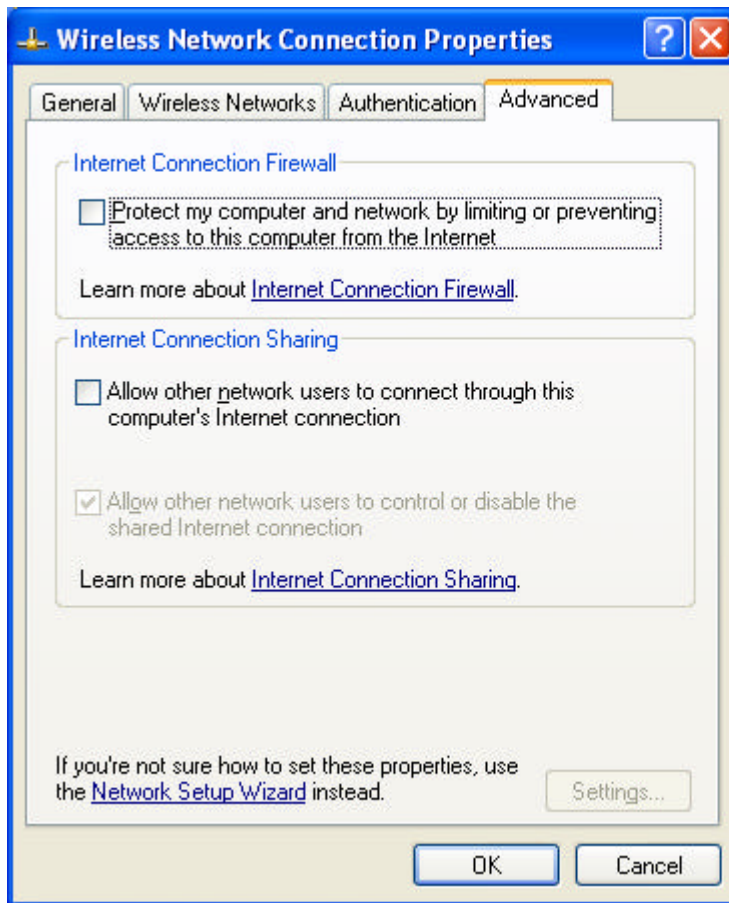
This window provides authentication via 802.1X. 802.1X, an IEEE standard that provides an authentication framework for 802-based LANs. 802.1X takes advantage of an existing authentication protocol known as the Extensible Authentication Protocol. 802.1x, giving someone secure, encrypted, wireless access on a Microsoft network will be as easy as setting a flag on the users domain account.

What does this mean for the Home Network user?

802.1x will ensure that if and when you make the change over to Wireless Ethernet, your neighbor will not be able to access your wireless LAN!



The 'Advanced' window offers Firewall and Internet Connection Sharing functions. Depends on your networking environment, you can select below functions.



Appendix A Glossary

Access Point - An internetworking device that seamlessly connects wired and wireless networks together.

Ad-Hoc - Ad-Hoc is a peer- to-peer wireless network without Access Point. A group of wireless clients consistent an independent wireless LAN.

Backbone - The core infrastructure of a network, the portion of the network that transports information from one central location to another central location. The information is then off-loaded onto a local system.

BSS - Stands for “Basic Service Set.” An Access Point associated with several wireless stations.

ESS - Stands for “Extended Service Set.” More than one BSS can be configured as an Extended Service Set. An ESS is basically a roaming domain.

Infrastructure - An integrated wireless and wired LAN is called an Infrastructure configuration.

MINI-PCI TYPE III– Mini-PCI is a small form factor version of the PCI specification. The Mini-PCI format comes in several different form factors: the Type I, Type II, and Type III. The Mini-PCI Type III card is the most popular of the Mini-PCI standards. The Mini-PCI Type III golden finger plugs into a 124-pin card edge type connector that is similar to the SODIMMS type. Mini-PCI provides the same 32bit 33MHz performance that you have come to expect from the PCI bus. Mini-PCI is still pretty much an OEM product, as you are not yet able to go to a store and purchase a Mini-PCI card.

Roaming - A function that allows one to travel with a mobile end system (wireless LAN mobile station, for example) through the territory of a domain (an ESS, for example) while continuously connecting to the infrastructure.

Wired Equivalent Privacy (WEP) - To prevent access from the unauthorized wireless stations to the data that is transmitting through the network, the Wireless LAN card provides the WEP (Wired Equivalent Privacy) level of security that was part of the original 802.11 standard. The wireless LAN card supports both 64 bits WEP and 128 bits data encryption based on the RC4 algorithm.

SSID - Short for Service Set Identifier. The SSID differentiates one WLAN from another, so all access points and all devices attempting to connect to a specific WLAN must use the same SSID. A device will not be permitted to join the BSS unless it can provide the unique SSID.