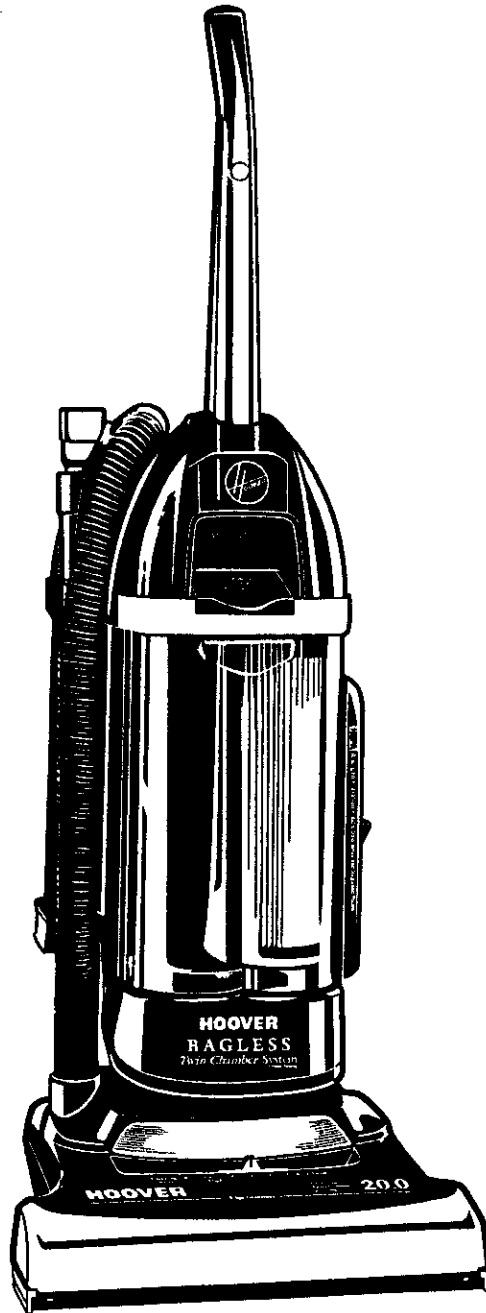
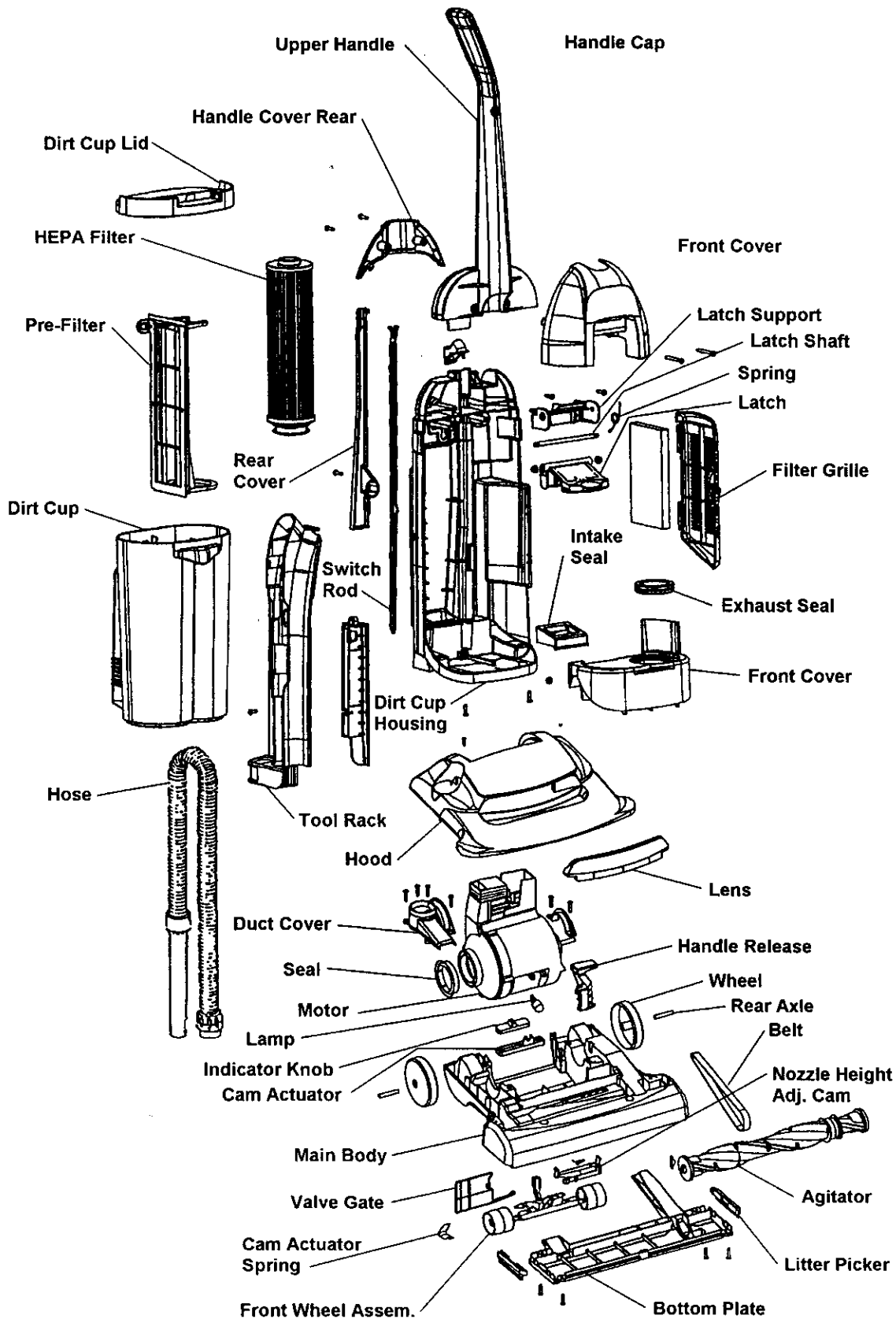


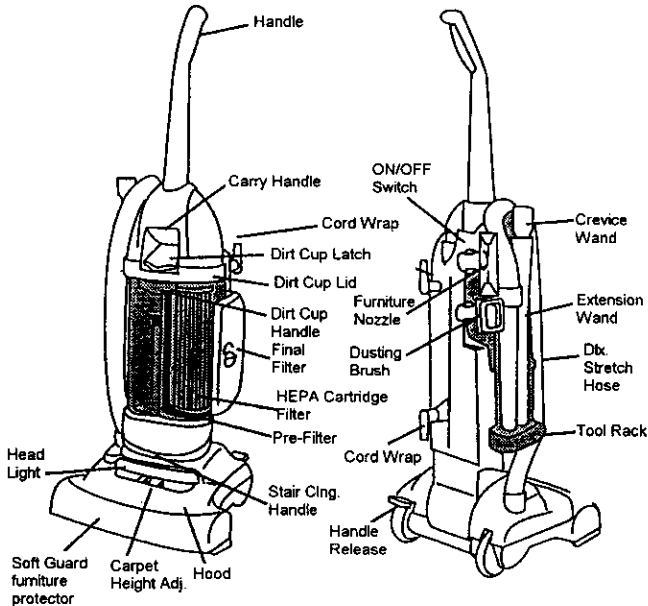
SERVICE INSTRUCTIONS HOOVER - BAGLESS CLEANERS





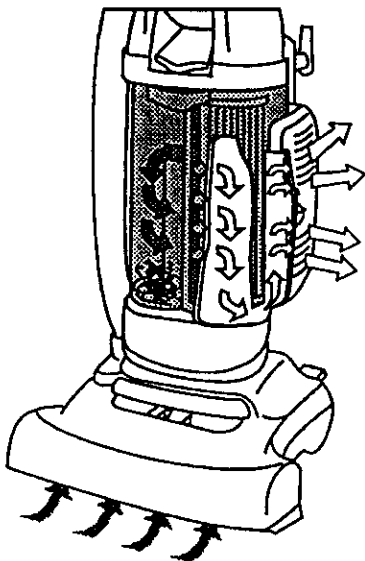
I. General

The Hoover Twin Chamber™ Bagless upright cleaners were first introduced in mid - 2000. The initial line consisted of three models.

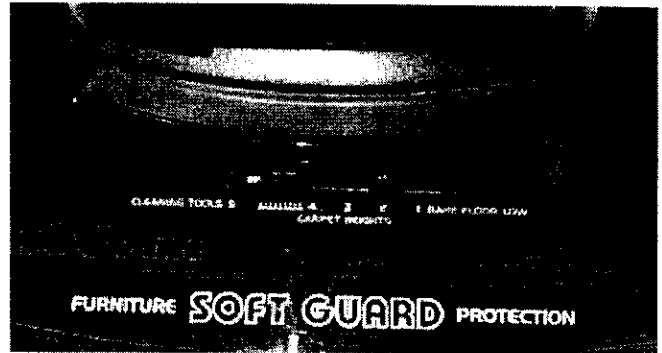


II. Operation

These Bagless models operate on a direct (or dirty) air system. The air that brings the dirt into the unit passes the motor fan area and goes directly to the dirt receptacle, in this case, the dirt cup. It is filtered and exhausts back into the room (See diagram below). (The motor is cooled from a separate air source.)

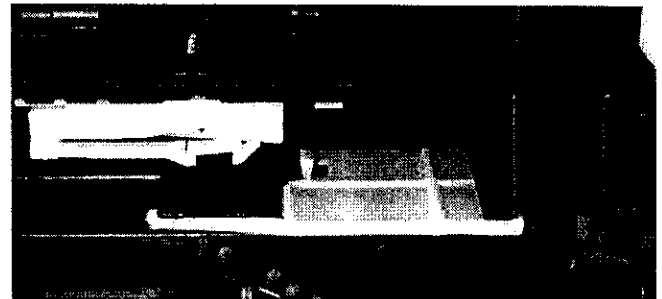


The carpet height adjustment lever has 4 settings for carpet cleaning and one for top tool conversion.

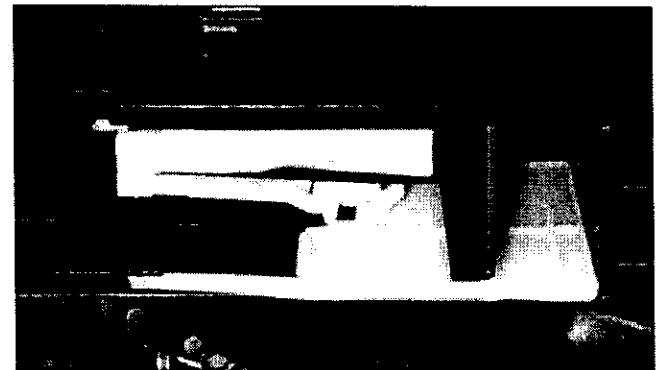


It is important that the unit be in the proper setting (carpet - for cleaning, and cleaning tools - when using the hose and tools). This will ensure optimum performance.

The cleaning tool hose is permanently attached to the unit. The air is directed to the hose by adjusting the nozzle control knob to the cleaning tool position. The valve gate operates in conjunction with the height adjustment lever. When the lever is in any one of the four carpet settings the valve gate is open. The cam is not contacting the valve gate.



As the lever is moved to the cleaning tools position the cam locks onto the valve gate and slides it to shut off suction to the agitator cavity.

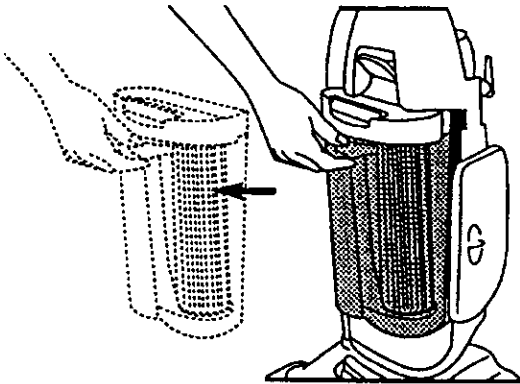


Note: The illustrations are shown without the bottom plate or wheel assembly in place.

III. Disassembly

A. Twin Chamber™ Dirt Cup Assembly

1. Remove Dirt Cup Assembly by lifting Dirt Cup Latch and sliding Dirt Cup out of position as illustrated.

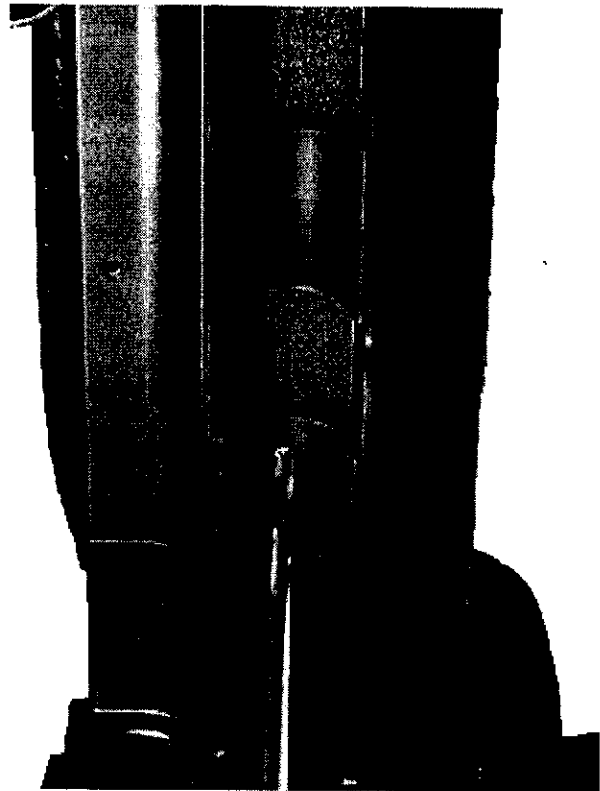


2. To remove the Pre-Filter and HEPA filter pull straight upward on the Pre-Filter Assembly while slightly flexing the dirt cup outward as shown.



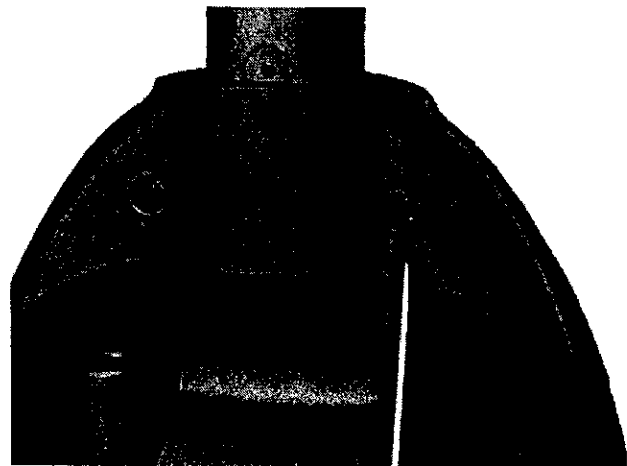
B. Tool Rack

1. To remove Tool Rack, remove screw as illustrated and slide tool rack up and off of cleaner.



C. Handle Cover / Handle Cover Rear

1. To remove the Handle Cover Rear remove 2 screws as illustrated.

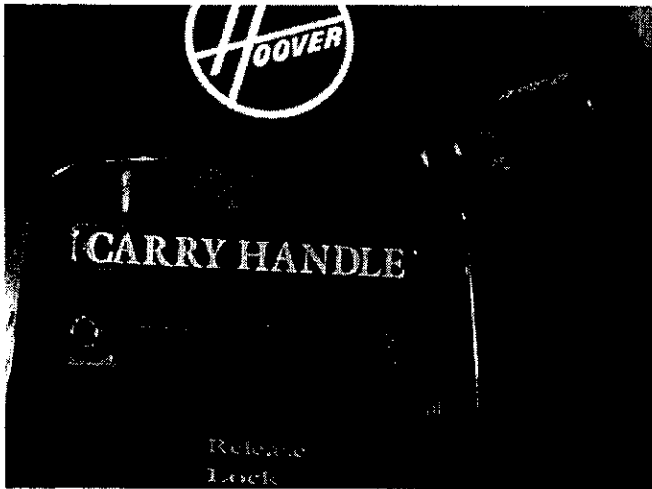


2. Remove Handle Cover Rear by pivoting top of Cover backwards and lifting out of place.

3. Remove 2 screws holding Handle Cover in place as shown.



4. To remove handle cover, pry handle cover as shown and pull forward out of position.



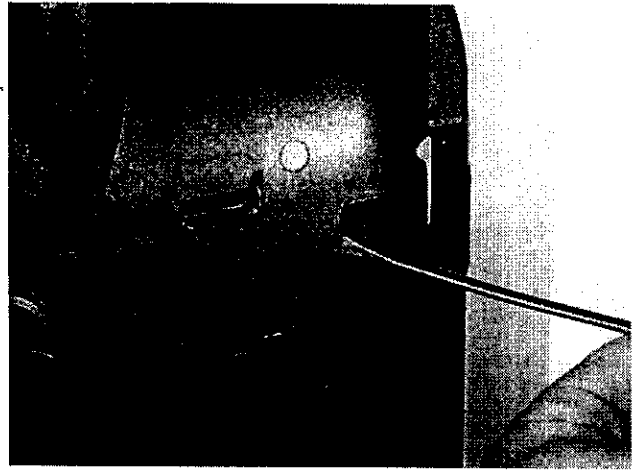
D. Dirt Cup Latch

1. Remove 2 screws as illustrated and pull Dirt Cup Latch straight forward and off of Upper Handle Assembly.



E. Upper Handle Assembly

1. Pry out ward on back panel of Upper Handle to release tabs on back of handle as shown. While prying pull handle up to release from cleaner.



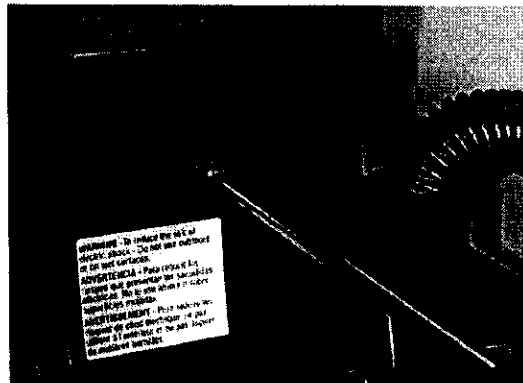
F. Lower Handle / Attachment Cord

1. To replace Attachment Cord, once the Upper Handle has been removed, the strain relief can be lifted out of position.

Note routing of cord through hook at top of handle.



2. Remove bolt located as shown so that Lower Handle can be removed. Once the bolt has been removed the Handle can be pulled straight up and off of the cleaner.



3. Once the Lower Handle has been removed from the base of cleaner the Attachment Cord can be lifted out of Lower Handle and replaced.

Note: The attachment cord has a small bump located on the end of the plug. This prevents the cord from easily sliding out of the Lower Handle.



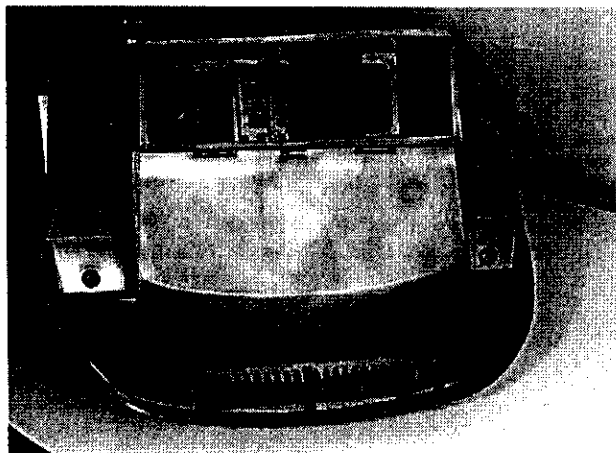
G. Final Filter / Final Filter Grille

1. The Final Filter Grille can be removed by unsnapping the grille from the hinges on the Dirt Cup Housing.
2. The Final Filter is placed into the holder with the green side of the filter facing outward.

G. Front Cover

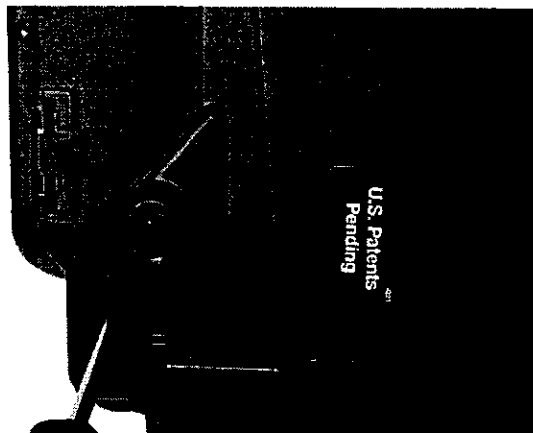
1. The Front Cover is replaced by removing the 2 screws as illustrated below. Once the screws are removed the Front Cover can be lifted off of the Dirt Cup Housing.

Note: The Final Filter Grille should be opened (if it has not been removed) to ease removal of Front Cover.



H. Switch Control / Rear Cover

1. Remove 1 screw inside lower cord hook.



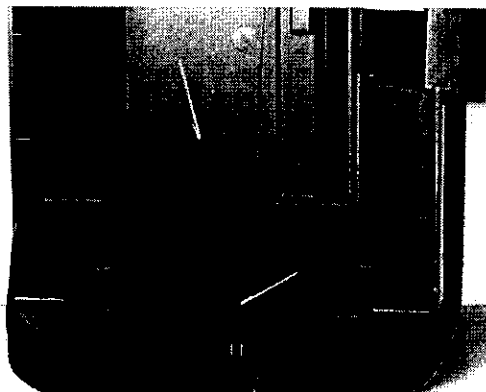
2. Release clips located on upper end of Rear Cover by prying and lifting Rear Cover as illustrated.



3. Once Rear Cover is removed the ON/OFF button can be released and the Switch Rod slid up and out of the cleaner.

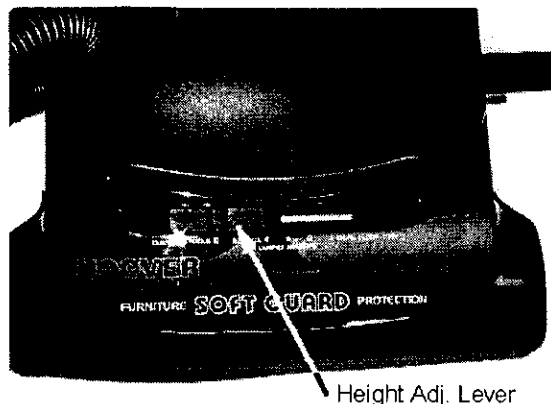
I. Intake Seal

1. The Intake Seal can be replaced by lifting out of position. Upon reassembly insure that tab on back of seal is positioned inside slot on Lower Handle.

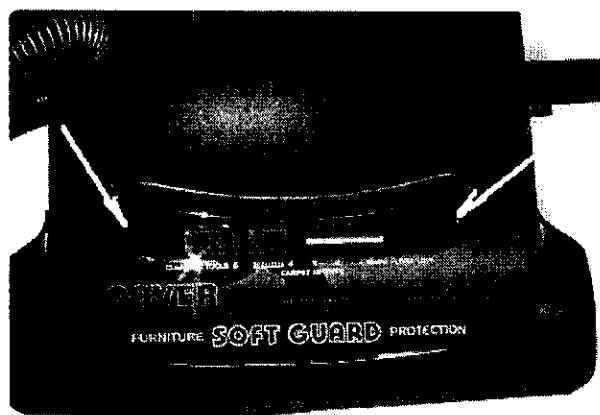


J. Hood

1. Remove height adjustment lever.



2. Remove four screws as illustrated

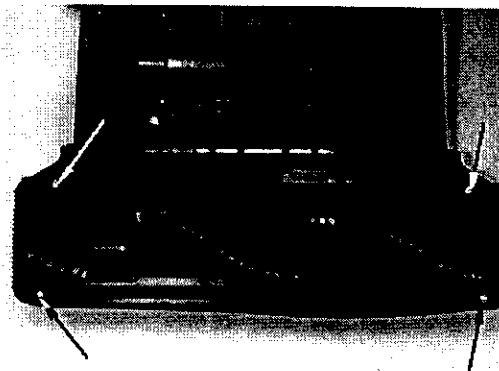


K. Headlight

1. Remove hood.
2. Remove bulb by pulling straight out of socket; push new bulb into socket until it locks in place.

L. Bottom Plate

1. Turn cleaner upside down.
2. Remove four screws securing bottom plate.



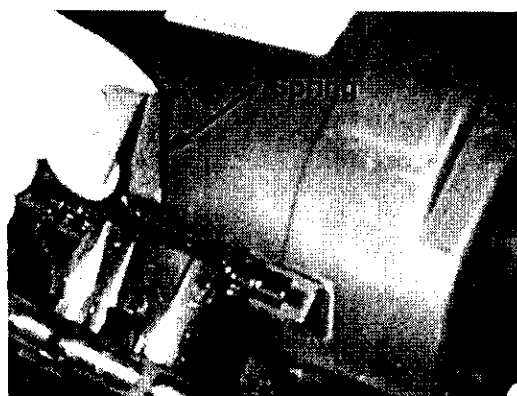
3. Lift bottom plate up and off of unit.

M. Agitator / Belt

1. Remove bottom plate.
2. Lift agitator out of housing and slide agitator out from belt.
3. Remove belt from around motor shaft.

N. Front Wheel Assembly

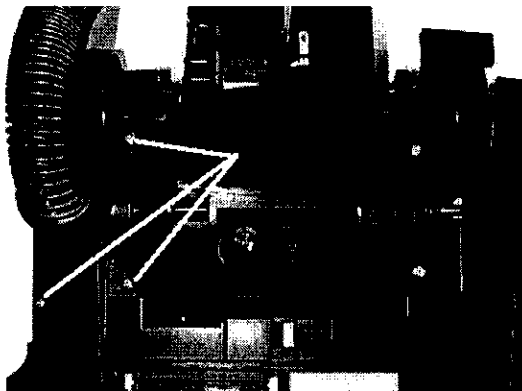
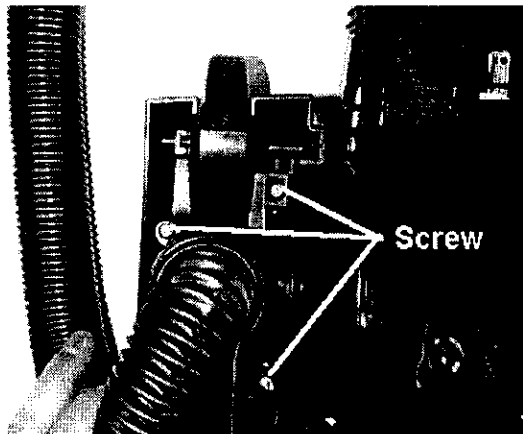
1. Remove cam actuator spring from the front wheel support retaining boss and remove by pulling out of the main body retention pocket.



2. Pivot front wheel assembly upward and slide from retaining slots in main body.

O. Hose

1. Remove four screws securing L.H. motor retainer.



2. Hose can be removed from motor retainer by releasing two tabs from under side of retainer.

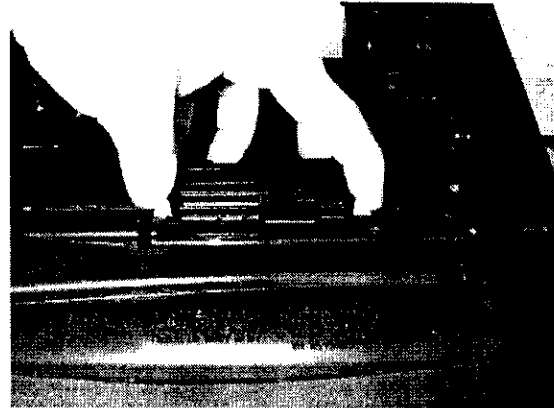
P. Motor

1. Remove motor retainer R.H. two screws and motor retainer L.H. four screws.
2. Lift motor assembly upward and off of main body.

Note: When reassembling motor to main body be careful not to damage motor seal between motor and main body.

Q. Nozzle Height Adjustment Cam / Cam Actuator

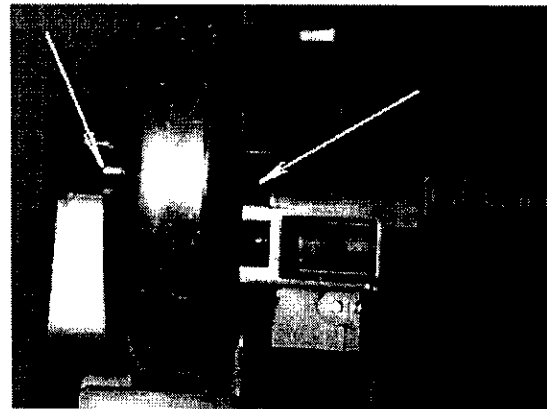
1. Remove bottom plate.
2. Remove valve gate.
3. Remove front wheel support.
4. Remove hood.
5. Release the two nozzle height adjustment cam retention tabs.



The spring on the cam is replaceable.

R. Rear Wheels.

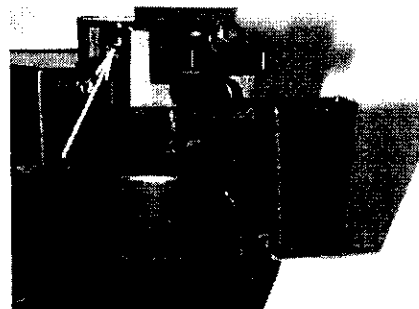
1. Release the rear wheel shaft from the main body retention slots.



Note: The main body must be flexed on one side or the other of the rear wheels while pulling upward on the rear wheel shaft and then on the other side of the rear wheel to facilitate removal.

S. Handle Release Lever

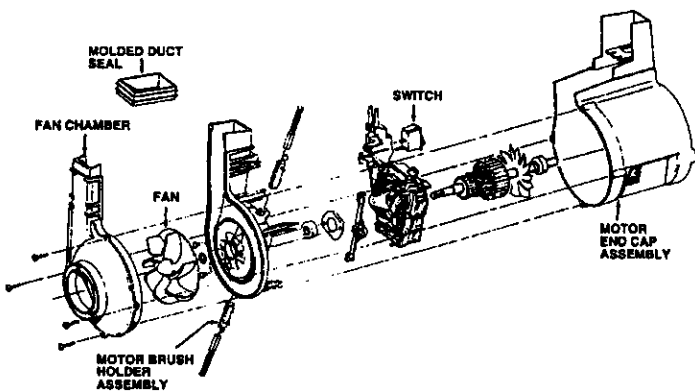
1. Remove hood.
2. Lower handle to its lowest position.
3. Release the handle lever shaft protrusion from the main body retention slots.



T. Motor Assembly

1. Remove handle.
2. Remove hood.
3. Release belt from motor shaft.
4. Remove motor retainer R.H. and L.H.
5. Lift motor off the main body. Check for the seal at the inlet to the fan chamber. This seal is friction fit and slides out of the housing.

Motor service



Serviceable components are listed on the above schematic. Failure of any component not listed requires replacement of the entire motor.

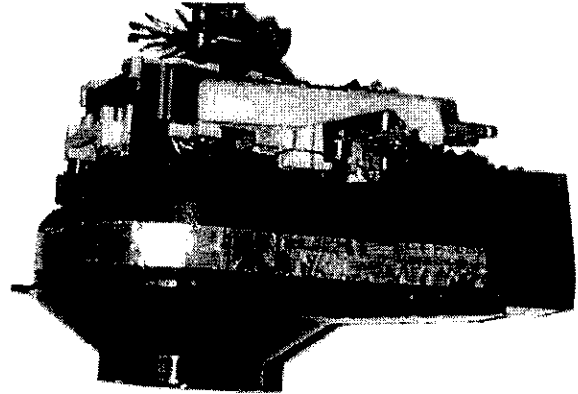
Fan

1. Remove light bulb by pulling straight out of the socket.
2. Remove four screws which retain the fan chamber to the motor end cap assembly.
3. Remove motor end cap assembly by sliding it off the fan chamber and motor housing assembly.
4. Remove the molded duct seal by sliding it off the housings.



5. Lift off fan chamber and remove fan (LH thread)

At this point, you have broken a latex paint seal between the motor housing and fan chamber cover. It is important that aluminum tape be installed in its place as shown below. Motor Brush Holder Assembly



(Replaced as an assembly which includes motor brush and holder)

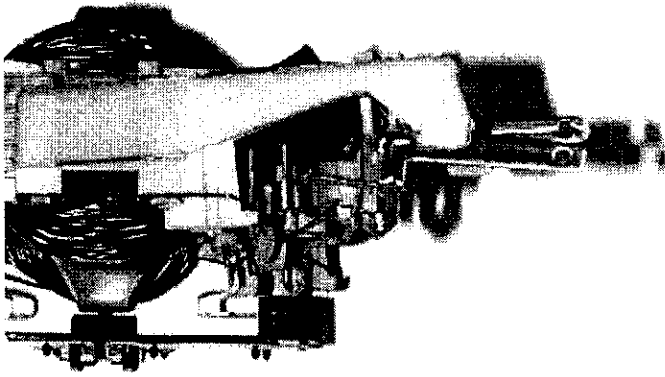
1. Remove four screws which retain fan chamber to motor end cap assembly.
2. Slide fan chamber and motor housing assembly out of motor end cap assembly.
3. Grasp motor brush holder assemblies with pliers and slide then outward to release the terminal connection.

Upon reassembly of new motor brush holder assemblies, position holders and slide them into place insuring the field terminal connection and continue to insert until they stop.

Do not grasp outside of brush holder with pliers as it could damage the holder and cause the carbon brush to stick.

On/off switch

1. Remove fan.
2. Remove brush holders.
3. Remove armature.
4. Remove field assembly
5. Remove switch/attachment cord terminal blade.



6. Remove field winding lead from switch terminal by uncrimping connection.

7. Remove switch by releasing switch pressure tabs and snapping switch out of holder.

Note: When installing a new switch, the field winding lead must be securely crimped to the proper switch terminal.

Troubleshooting check list - Hoover Bagless Cleaner

The following is a guide to aid in determining the origin of a problem for which these models could conceivably be brought in for service.

PROBLEM	POSSIBLE CAUSE	POSSIBLE SOLUTION
A. Motor won't run	<ol style="list-style-type: none"> 1. Not firmly plugged in. 2. No voltage in customer's wall plug. 3. On/off switch bad. 4. Open in attachment cord. 5. Open circuit in motor. 6. Fan jammed by foreign object. 7. Broken switch control rod. 	<ol style="list-style-type: none"> 1. Check power cord for proper connections. 2. Plug into known good voltage source. 3. Replace switch 4. Replace cord. 5. Check motor wiring (armature & field). 6. Remove obstruction. 7. Replace switch control rod.
B. Motor runs cleaner won't pickup.	<ol style="list-style-type: none"> 1. Agitator belt broken or worn. 2. Dirt Cup full. 3. Worn agitator brushes. 4. Warped or damaged bottom plate. 5. Blocked air flow system. 6. Nozzle control knob in "cleaning tools" position. 	<ol style="list-style-type: none"> 1. Replace belt. 2. Empty Dirt Cup / Clean HEPA filter. 3. Replace agitator. 4. Replace bottom plate. 5. Clear blockage. 6. Adjust to one of the four carpet cleaning positions.
C. Motor intermittent	<ol style="list-style-type: none"> 1. Loose wire connection. 2. Defective on/off switch. 3. Worn carbon brushes. 4. Motor brush hanging in holder. 	<ol style="list-style-type: none"> 1. Check all connections. 2. Check and change switch. 3. Replace motor brush holder assembly. 4. Replace motor brush holder assembly.
D. Motor runs hot	<ol style="list-style-type: none"> 1. Refer to 2 and 5 under Item B Replace motor. 2. Worn carbon brushes. 3. Shorted or overloaded field coil. 4. Shorted or overloaded armature. 5. Loose wire connection. 6. Motor air vent clogged. 7. Tight motor bearings. 	<ol style="list-style-type: none"> 1. The items referred can cause the motor to run hot because all restrict the air supply. Field and armature will be generally discolored. 2. Replace motor brush holder assembly. 3. Replace motor. 4. Replace motor. 5. Connections should be tight to prevent high resistance. Tighten connections or replace as necessary. 6. Clear air restriction. 7. Check and replace motor if necessary.
E. Cleaner noisy	<ol style="list-style-type: none"> 1. Interference between bottom plate and agitator. 2. Broken blade(s) on fan. 3. Agitator bearings dry or worn. 4. Warped agitator. 	<ol style="list-style-type: none"> 1. Check to see if bottom plate is damaged or mis - positioned. 2. Replace fan. 3. Grease or replace bearings. 4. Replace agitator.
F. No pickup using tools	<ol style="list-style-type: none"> 1. Cleaner not set to "cleaning tools" position. 2. Obstruction in hose. 3. Valve gate not functioning. 	<ol style="list-style-type: none"> 1. Check setting. 2. Clear obstruction. 3. Remove bottom plate and check operation

		NEW	PARTS	
		USER	DEALER	SEARS
U5288-900				
32541004	LATCH SHAFT	\$0.62	\$0.42	\$0.28
36153064	LATCH - DIRT CUP	\$2.34	\$1.56	\$1.03
36153065	LATCH SUPPORT	\$1.87	\$1.25	\$0.83
36426043	PRE FILTER	\$7.80	\$5.20	\$3.43
36433145	TOOL RACK	\$13.62	\$9.10	\$6.01
36923011	TOOL RACK GUIDE	\$1.25	\$0.83	\$0.55
37245037	BOTTOM PLATE	\$12.48	\$8.32	\$5.49
37249007	FRONT COVER	\$8.84	\$5.93	\$3.91
37257261	FILTER GRILLE	\$1.56	\$1.04	\$0.69
37258052	REAR COVER	\$0.94	\$0.62	\$0.41
37258056	HANDLE COVER REAR	\$1.72	\$1.14	\$0.75
37258127	HANDLE COVER	\$7.49	\$4.99	\$3.29
37259001	DIRT CUP HOUSING	\$30.16	\$20.12	\$13.28
38355013	SPRING	\$0.21	\$0.16	\$0.11
38775072	DIRT CUP	\$29.12	\$19.76	\$13.04
38783026	INTAKE SEAL	\$2.34	\$1.56	\$1.03
38784079	EXHAUST SEAL	\$0.99	\$0.68	\$0.45
40201189	HANDLE HARDWARE ASSEM	\$0.62	\$0.42	\$0.28
42249005	DIRT CUP LID	\$6.24	\$4.16	\$2.75
42252A89	HOOD ASSEMBLY	\$19.66	\$13.10	\$8.65
43611042	FILTER (HEPA)	\$29.99	\$19.99	\$13.19
46388025	ATTACHMENT CORD	\$12.48	\$8.32	\$5.49
51632007	LABEL - FILTER GRILLE	\$0.31	\$0.21	\$0.14
51869058	DIRT CUP WARNING LABEL	\$0.52	\$0.36	\$0.24
51879031	DIRT CUP REMOVAL LABEL	\$0.10	\$0.06	\$0.04
56511A76	OWNER MANUAL	\$0.00	\$0.00	\$0.00
58175145	CARTON	\$0.00	\$4.16	\$2.75