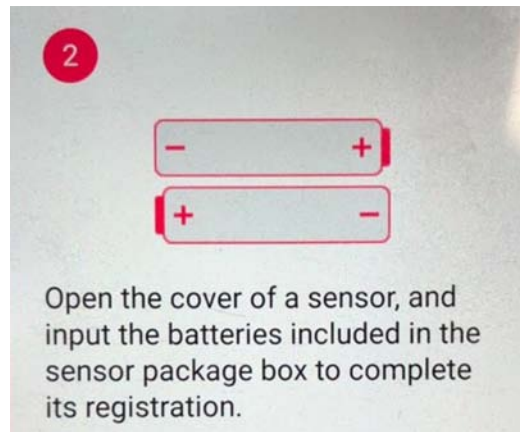
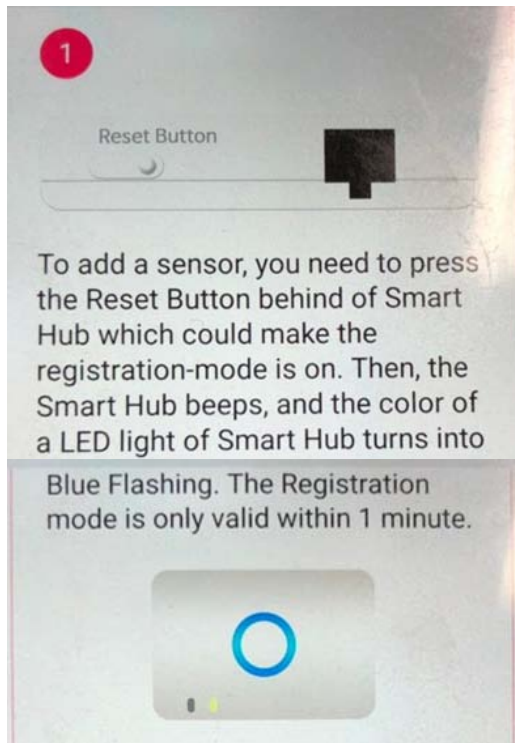


# KEYPAD

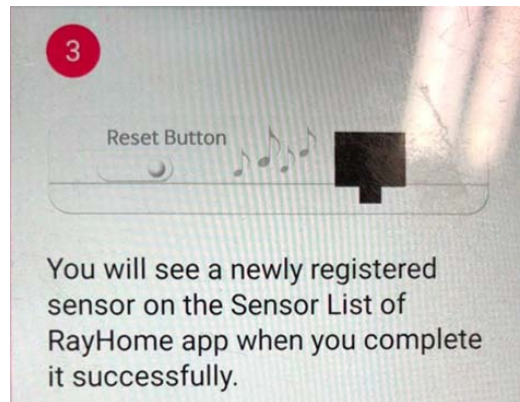
User Manual



## 1) Sensor(Remote Controller) registration

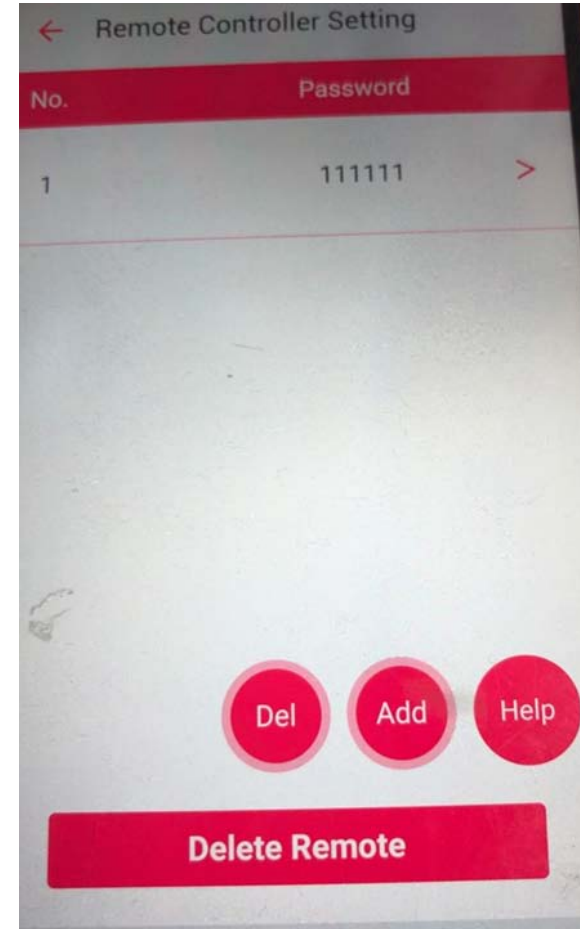
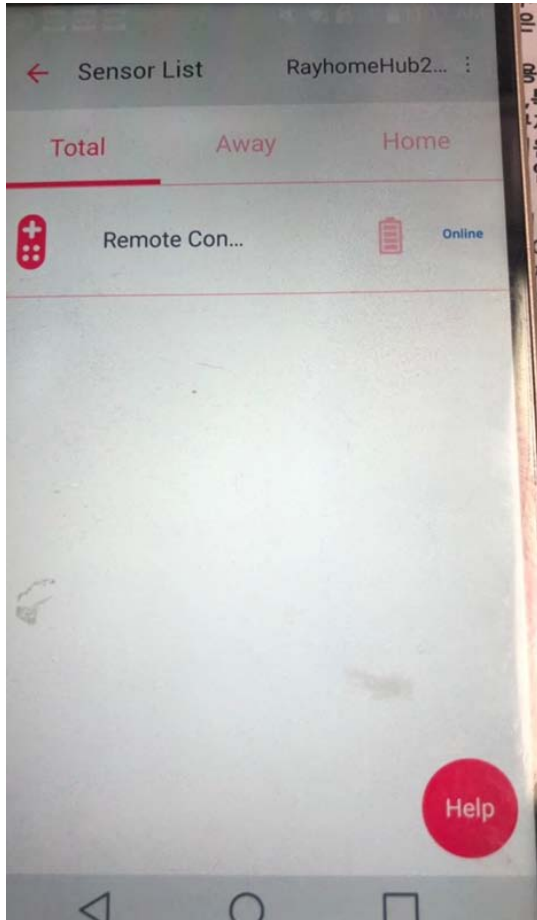


\* If you could not finish the sensor registration within 10 seconds to the Smart Hub/RayHome app, please go back to the first step of the sensor registration manual, and install it again.



- ① To add a sensor, you need to press the Reset Button behind of Smart Hub which could make the registration-mode is on. Then, the Smart Hub beeps, and the color of a LED light of Smart Hub turns into Blue Flashing. The Registration mode is only valid within 1 minute.
- ② Open the cover of a sensor, and input the batteries included in the sensor package box to complete its registration.
- ③ You will see a newly registered sensor on the Sensor List of RayHome app when you complete it successfully. If you could not finish the sensor registration within 10 seconds to the Smart Hub/RayHome app, please go back to the first step of the sensor registration manual, and install it again.

## 2) Password registration



In the sensor list page from RayHome application, user shall choose the selected Remote Controller device and then type in new 6 digit password for registration.

### 3) Delete Password



In the sensor list page from RayHome application, user shall choose the selected Remote Controller device to go into the setting, and then select the Remote Controller device to delete the passcode.

#### 4)-1 ARM

Press registered 6 digit passcode and then press LOCK button to ARM setting up.

#### 4)-2 DISARM

Press registered 6 digit passcode and then UNLOCK button to DISARM setting up.

#### 5) SOS call

From the Remote Controller button, user shall press and hold the LOCK icon button and UNLOCK icon button for 2 seconds sim

This device complies with part 15 of the FCC Rules. Operation is subject to the following two conditions:

- (1) This device may not cause harmful interference, and
- (2) This device must accept any interference received, including interference that may cause undesired operation.

#### FCC Information to User

This equipment has been tested and found to comply with the limits for a Class B digital device, pursuant to Part 15 of the FCC Rules. These limits are designed to provide reasonable protection against harmful interference in a residential installation. This equipment generates, uses and can radiate radio frequency energy and, if not installed and used in accordance with the instructions, may cause harmful interference to radio communications. However, there is no guarantee that interference will not occur in a particular installation. If this equipment does cause harmful interference to radio or television reception, which can be determined by turning the equipment off and on, the user is encouraged to try to correct the interference by one of the following measures:

- Reorient or relocate the receiving antenna.
- Increase the separation between the equipment and receiver.
- Connect the equipment into an outlet on a circuit different from that to which the receiver is connected.
- Consult the dealer or an experienced radio/TV technician for help.

#### Caution

THE GRANTEE IS NOT RESPONSIBLE FOR ANY CHANGES OR MODIFICATIONS NOT EXPRESSLY APPROVED BY THE PARTY RESPONSIBLE FOR COMPLIANCE. SUCH MODIFICATIONS COULD VOID THE USER'S AUTHORITY TO OPERATE THE EQUIPMENT.