



Expanding Possibilities

HP

2500C/C+/CM

Professional Series Color Printer



GETTING STARTED GUIDE

Acknowledgments

HP ColorSmart II, HP PhotoREt II and HP ZoomSmart Scaling Technology are trademarks of Hewlett-Packard Company.

Microsoft is a U.S. registered trademark of Microsoft Corporation.

Windows is a trademark of Microsoft Corporation.

Adobe is a U.S. registered trademark of Adobe Systems Incorporated.

PostScript 3 is a trademark of Adobe Systems Incorporated.

NetWare and Novell are registered trademarks of Novell Corporation.

Notice

The information contained in this document is subject to change without notice.

Hewlett-Packard makes no warranty of any kind with regard to this material, including, but not limited to, the implied warranties of merchantability and fitness for a particular purpose.

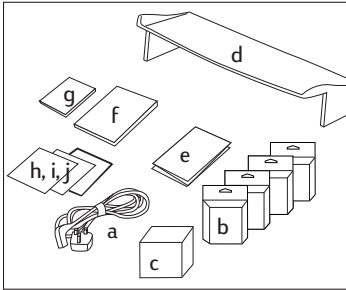
Hewlett-Packard shall not be liable for errors contained herein or for incidental or consequential damages in connection with the furnishing, performance, or use of this material.

No part of this document may be photocopied, reproduced, or translated to another language without the prior written consent of Hewlett-Packard Company.

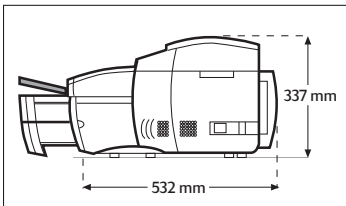
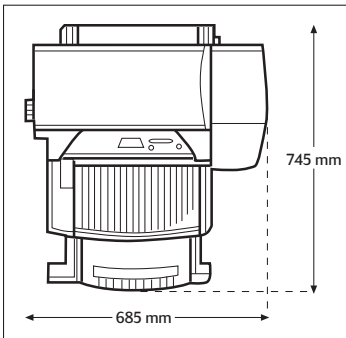
Edition 2 – June 1999

©Copyright 1999 by Hewlett-Packard Company
450 Alexandra Road
Singapore 119960
Singapore

HP	2500C/C+/CM	Contents
	Step 1 - Unpack the Printer	2
	Step 2 - Remove All Tapes from the Printer	3
	Step 3 - Connect Cables	3
	Step 4 - Set LCD Language Preference	4
	Step 5 - Install Ink Cartridges	5
	Step 6 - Install Printheads	6
	Step 7 - Load Paper in Tray 2	7
	Step 8 - Load Paper in Tray 3	9
	Step 9 - Align Printheads	10
	Step 10 - Install the Printer Software	11
	Customer Support	12
	HP Supplies and Accessories	15
	Printer Specifications	17
	Hewlett-Packard Limited Warranty Statement	21
	Declaration of Conformity	24
	Regulatory Notices	25



1. Check that the following items are included with the printer:
 - a. Power Cord
 - b. Four HP No. 10 Ink Cartridges (black, cyan, magenta and yellow)
 - c. Four HP No. 10 Printheads (black, cyan, magenta and yellow)
 - d. Extended Tray Cover
 - e. Setup Poster
 - f. Getting Started Guide
 - g. Quick Reference Guide
 - h. Starter CD
 - i. HP JetDirect CD (HP 2500CM printer only)
 - j. PCL 5Ce CD (standard with HP 2500C+, and for Europe only, standard with HP 2500C/CM)



2. Prepare printer location.

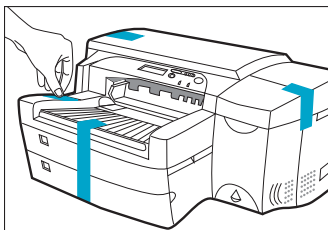
The location requirements for the printer are:

 - A sturdy, level surface for placement
 - Space allowance around the printer
 - A well ventilated room
 - No exposure to direct sunlight or chemicals, including ammonia based cleaning solutions
 - Adequate power supply
 - A stable environment – no abrupt temperature or humidity changes
 - Relative humidity 20% to 80%
 - Room temperature 59° to 95°F (15° to 35°C)

HP

2500C/C+/CM

Step 2 - Remove All Tapes from the Printer

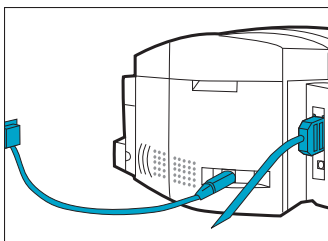


1. Remove the four tapes securing the printer. Open the top cover and remove the fifth tape from the inside of the printer.

HP

2500C/C+/CM

Step 3 - Connect Cables

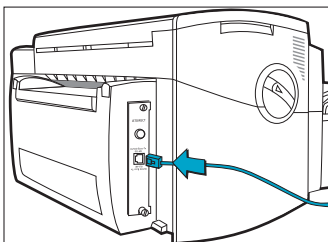


1. Ensure that the computer is turned off.
2. Plug the power connector firmly into the printer's power socket.
3. Plug the power plug into an electrical outlet.

To connect the printer directly to the computer:

1. Connect the printer end of the parallel cable firmly to the parallel port on the printer.
2. Snap both clips onto the notches on the connector.
3. Connect the computer end of the parallel port on your computer and tighten the screws on the connector.

The HP 2500CM Professional Series Color Printer comes with a built-in HP JetDirect internal print server.



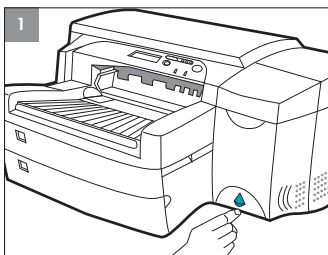
To connect the HP 2500CM printer to the network, plug the network cable into the network port on the print server. For more information on configuring the printer in a network environment, [refer to the Network Guide which is available on your HP 2500C/C+/CM Starter CD.](#)

You can set the LCD Panel to display printer messages in one of the following languages:

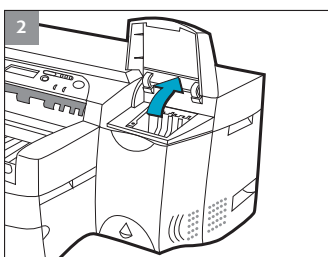
- | | |
|--------------|-------------|
| • English | • Norwegian |
| • German | • Finnish |
| • French | • Swedish |
| • Dutch | • Danish |
| • Portuguese | • Polish |
| • Italian | • Czech |
| • Spanish | • Russian |

To do so:

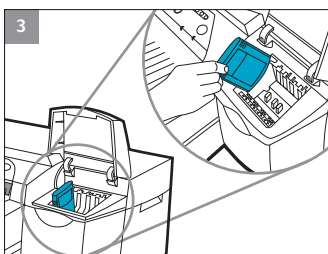
1. Ensure that the printer is turned off.
2. Press and hold [Menu] and turn on the printer.
3. Continue to hold down [Menu] until the LCD displays "LANG = X" (where "X" is the current language setting).
4. Press [Value] to scroll through the language list.
5. Press [Select] to choose and confirm your language selection.



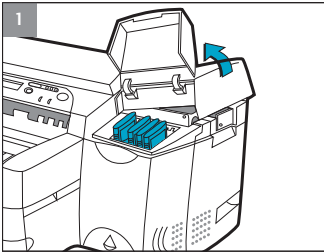
1. Press the Power button to turn on the printer.



2. Lift to open the Ink Cartridge door.

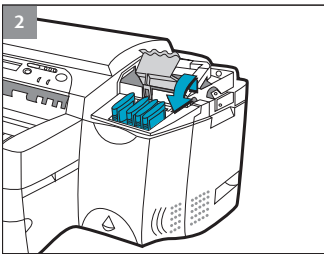


3. Remove all four ink cartridges from their packaging and insert each ink cartridge into its own color-coded slot. **Make sure that each cartridge is pressed firmly into place.**



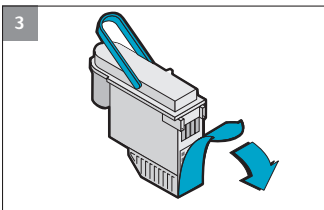
1. Make sure that the Ink Cartridge Door is open. Grasp the side of the Printhead Access Cover and lift up firmly to snap the cover open and completely remove it from the printer. You may have to use some force to open the cover.

Note: If the cradle cannot be found under the cover, it means that the tape securing the cradle has not been removed. Open the Top Cover, remove the tape securing the cradle, turn off the printer and turn on again.

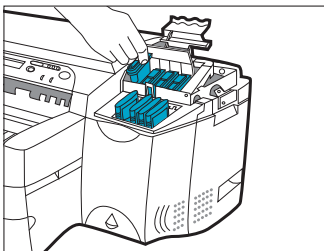


2. Make sure the printer is turned ON.

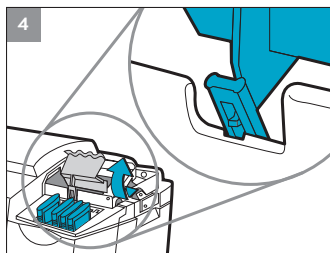
The cradle will move away slightly. Open the purple printhead latch by lifting the latch from the rear. Pull the latch forward and down to release the latch hook from the purple carriage lock. Then lift and push the latch toward the back of the printer.



3. Remove each printhead from its package.
Remove the protective tape from each printhead.

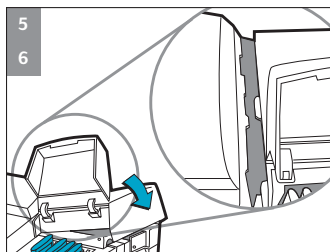


Insert each printhead into its own color-coded socket.
Push the printheads down firmly.



4. Close the printhead latch. Be sure that the hook on the printhead latch catches the carriage lock.

Note: You may have to use some force to close the printhead latch.

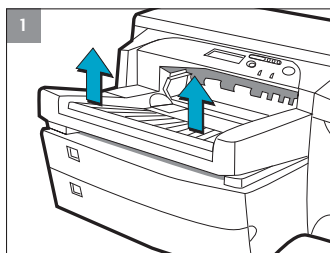


5. Ensure that the Ink Cartridge Door is lifted. Align the tabs of the cover with the tabs on the printer.
6. Lower and snap to close the cover.
7. Close the Ink Cartridge Door.

HP

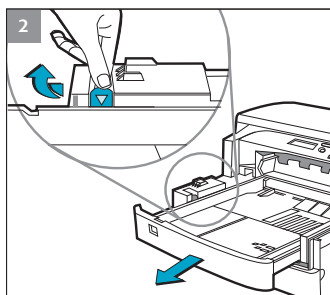
2500C/C+/CM

Step 7 - Load Paper in Tray 2

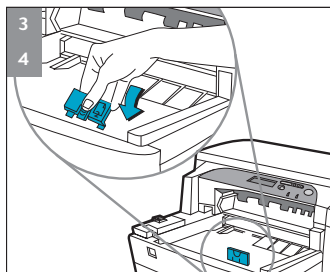


Note: Tray 2 is a fixed tray. Tray 1 has to be removed before Tray 2 can be accessed. Tray 2 is designed to hold up to 150 sheets of paper and can accommodate paper sizes such as Letter, A4, Legal, B4, A3, 11" x 17", 13" x 19" and 330 x 483 mm.

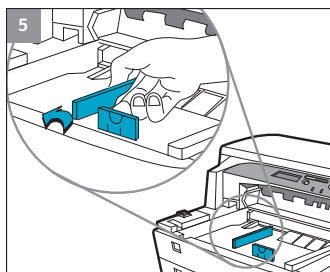
1. Remove Tray 1 and set it aside.



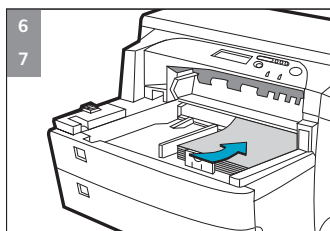
2. If you are loading paper sizes such as B4, A3, 11" x 17" and 330 x 483 mm, unlock the tray lock, extend the tray and re-lock the tray lock.



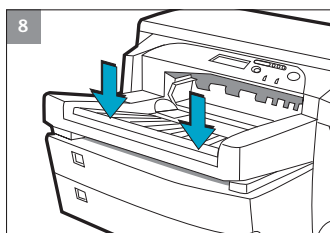
3. Unpack the Paper Length and Width guides.
4. Insert the Paper Length guide into the slot of the paper size you wish to load.



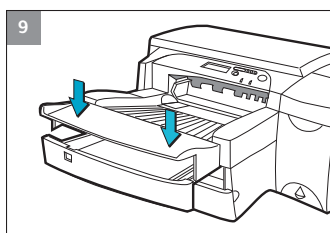
5. Insert the Paper Width guide into the slot of the paper size you wish to load.



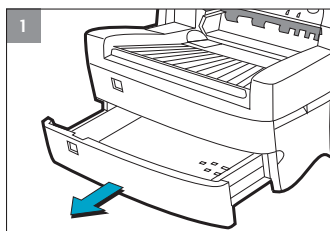
6. Insert paper, print side down into the printer.
7. Tap the left side of the stack of paper to ensure that it is flush against the right side of the tray.



8. Replace Tray 1.

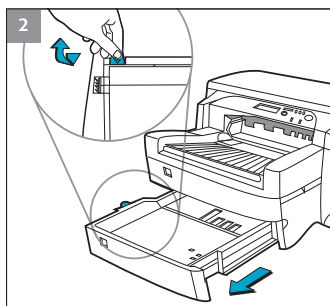


9. If Tray 2 is extended, place the Extended Tray Cover over the tray.
10. On the Control Panel, press [Menu] until PAPER HANDLING MENU appears.
11. Press [Item] to select TRAY 2 TYPE=
12. Press [Value] to select the media type you have loaded into the tray and press [Select].

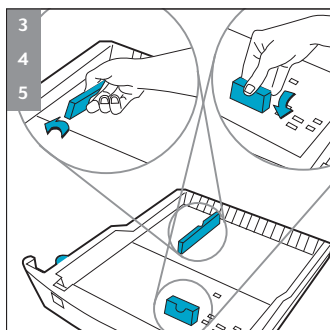


Note: Tray 3 is designed to hold up to 250 sheets of paper and can accommodate paper sizes such as Letter, A4, Legal, B4, A3, 11" x 17", 13" x 19" and 330 x 483 mm.

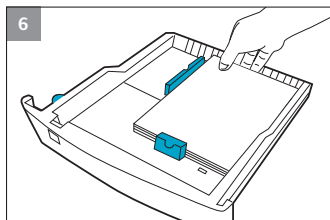
1. Grasp the sides of Tray 3 and pull it out of the printer.



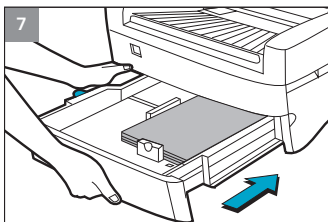
2. If you are loading paper sizes such as B4, A3, 11" x 17" and 330 x 483 mm, unlock the tray lock, extend the tray and re-lock the tray lock.



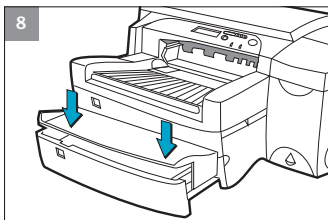
3. Unpack the Paper Length and Width guides.
4. Insert the Paper Length guide into the slot of the paper size you wish to load.
5. Insert the Paper Width guide into the slot of the paper size you wish to load.



6. Load paper by aligning the paper edge to the Paper Length guide first. Tap the other end of the paper to ensure that the paper is properly loaded. Tap the left side of the stack of paper to ensure that it is flush against the right side of the tray.



7. Re-insert Tray 3 into the printer.



8. If Tray 3 is extended, place the Extended Tray Cover over the tray.
9. On the Control Panel, press [Menu] until PAPER HANDLING MENU appears.
10. Press [Item] to select TRAY 3 TYPE=
11. Press [Value] to select the media type you have loaded into the tray and press [Select].

HP

2500C/C+/CM

Step 9 - Align Printheads

1. Press [Menu] until DIAGNOSTICS MENU appears.
2. Press [Item] until ALIGN PRNT-HDS appears.
3. Press [Select]
4. The printer will print a page with 5 sets of alignment patterns.
5. In each set (A, B, C, D, or E) select the most aligned (straightest) pair of lines (1, 2, 3, 4 or 5).
6. Enter the corresponding numbers in the Control Panel by pressing [Value].
7. When you have entered a value for a set, press [Item] to move to the next.
8. When you have finished entering the values, press [Select].
9. The printer will print a confirmation page consisting of 2 squares and a cross.
10. Check the confirmation page to see if the lines on the squares and the cross are aligned.
11. Re-align the printheads if the confirmation page is not satisfactory.

Before you can use the printer, you must install the printer software. To install the printer software, you need at least 8 MB of RAM and Microsoft Windows 3.1x, 95 or 98 installed in your computer.

To install the printer software in Windows NT 4.0, you need at least 16 MB of RAM and Windows NT 4.0 installed in your computer.

Installing the PCL 3 Printer Software from the Starter CD into a PC

Note: The Starter CD includes a utility to easily copy the HP 2500C/C+/CM software to 3.5-inch high-density diskettes as well as to copy files to a server. This allows you to use the diskettes to install the software on systems that do not have a CD-ROM drive.

1. Start Microsoft Windows and make sure no other Windows applications are running.
2. Insert the Starter CD into your CD-ROM drive. The installation program will run automatically.
3. Click the **Printer Driver** option followed by **Install** in the CD menu to install your printer software or **Download** to download the printer software to either a hard disk, network drive or floppy disks. If installation does not automatically run, follow the instructions below.

Installing PCL 3 Printer Software from Floppy Disks (or the Starter CD, if the installation program does not run automatically)

1. Start Microsoft Windows and make sure no other Windows applications are running.
2. Insert Disk 1 into your computer's floppy drive (or the CD into the CD-ROM drive).
3. Select **File, Run** in Windows 3.1 or select **Start, Run** in Windows 95/98/NT 4.0.
4. At the Command Line Box,
 - For floppy disk installation, type the letter of your computer's floppy disk drive followed by **: \SETUP** (for example, a:\setup).
 - For CD installation, type the letter of your computer's CD-ROM drive followed by **: \INSTALL** (for example, d:\install).
5. Follow the instructions that appear on the screen to complete installation.

Customizing the Printer Software

You may choose to customize the printer software so that certain items or features such as Toolbox and bi-directional printing will be disabled the next time you install the printer software. This feature is useful if you want to install a customized configuration on several computers in a network.

To do this:

1. Download the printer software. During download, you will be asked if you wish to customize the printer software. If you choose not to, you may run the Installer Configuration Utility later by double-clicking on the HPINSCFG.EXE icon in the driver directory of the Starter CD.
2. Choose the options you wish to install.
3. Click **OK**.
4. The printer software will be installed according to this configuration the next time you run SETUP.EXE

Installing PCL 5Ce Printer Software from the PCL 5Ce CD into a PC

1. Start Microsoft Windows and make sure no other applications are running.
2. Insert the PCL 5Ce CD into your CD-ROM drive.
3. Select **Printers** in the Control Panel.
4. *Windows 3.1:* Click **Add**, select **Install Unlisted and Updated Printer** and click **Install**.
Windows 95/NT 4.0: Double-click on the **Add Printer** icon.
5. Select the printer driver INF file in the CD, <language>/<operating system>/disk 1.
6. Follow the instructions that appear on the screen to complete the installation.

Installing the PostScript Printer Software into a PC

Note: The PostScript Printer Software is available when you purchase a HP 2500CM Printer or the HP 2500C PostScript upgrade kit. For more information, see [HP Supplies and Accessories](#).

1. Start Microsoft Windows and make sure no other Windows applications are running.
2. Insert the **PostScript CD** into your CD-ROM drive.
3. Select **File, Run** in Windows 3.1 or select **Start, Run** in Windows 95/98/NT4.0.
4. At the Command Line Box, type the letter of your computer's CD-ROM drive followed by: **INSTALL** (for example, d:\install).
5. Follow the instructions that appear on the screen to complete instructions.

HP FIRST

HP FIRST is an automated information fax retrieval service which provides toll-free, 24-hour technical information to you by fax. Call HP FIRST at the following telephone numbers:

For US and Canada	(800) 333-1917
For customers in Europe	
U.K.	0800 96 02 71
For service in English outside U.K.	+ 31 20 681 5792
Austria	0600 8128
Belgium (Dutch)	0800 11906
Belgium (French)	0800 17043
Denmark	800 10453
Finland	800 13134
France	0800 905900
Germany	0130 810061
Italy	1678 59020
Norway	800 11 319
Portugal	05 05 31 33 42
Spain	900 993123
Sweden	020 795743
Switzerland (French)	0800 551 526
Switzerland (German)	0800 551 527
The Netherlands	0800 022 2420
For customers in Asia-Pacific	
Australia	613 9272 2627
China	86 10 6564 5735
Hong Kong	2506 2422
India	9111 622 6420
Indonesia	21-352 2044
Korea	822 769 0543
Malaysia	03 298 2478
New Zealand	64 09 356 6642
Philippines	(65) 275 7251
Singapore	275 7251
Taiwan	(02) 719 5589
Thailand	662 661 3511

HP Telephone Support

During warranty period, you may obtain assistance from the HP Customer Care Center. Before calling, please fill in the following information to be ready to help your Customer Care Center representative:

What is the serial number of your printer? (Check under the printer Top Cover or at the back of your printer.)

What model printer do you have? **HP 2500C**
HP 2500C+
HP 2500CM

What is the brand and model of your computer?

What version of the printer software are you using and what driver have you selected? (check the titlebar of the HP 2500C Toolbox.)

Run the HP 2500C Toolbox software utility by double-clicking on the icon in the program group in Windows 3.1x or on the desktop in Windows 95/98/NT 4.0. Click the Maintenance tab, and select "Display system information". Have this information ready when you call the support line.

The HP Customer Care Center can be reached at any of the following numbers:

For U.S. (208) 323-2551
For Canada (905) 206-4663

For Latin America

Argentina	(541) 787 4061/69
Brazil	55 11 709 1444
Chile	562 800 360999
Mexico city	01-800-22147000/1-800-9052900
Mexico Guadalajara	(525) 264 2075
Mexico Monterey	91800 22147
Venezuela	582 239 5664

For Europe

Africa/Middle East	41 22/780 71 11
Austria	0660 6386
Belgium (Dutch)	02 6268806
Belgium (French)	02 6268807
Czech Republic	42 (2) 471 7327
Denmark	3929 4099
Finland	203 47288
France	01 43 62 34 34
Germany	180 5258 143
Greece	0168 96 411
Hungary	36 (1) 252 4505
Ireland	01662 5525
Italy	02 264 10350
Norway	22 11 6299
Poland	48 22 37 50 65
Portugal	01 441 7199
Russia	7095 923 50 01
Spain	902 321 123
Sweden	08 619 2170
Switzerland	0848 80 11 11
The Netherlands	020 606 8751
Turkey	90 1 224 59 25
United Kingdom	0171 512 5202

For Asia-Pacific

Australia	(61-3) 9272-8000
China	86 10 6564 5959
Hong Kong	800 96 7729
India	9111 682 6035
Indonesia	21 350 3408
Korea	(82-2) 3270-0700
Malaysia	03 295 2566
New Zealand	09 356-6640
Philippines	2 867 3551
Singapore	272 5300
Taiwan	866-2-7170055
Thailand	02 661 4011
Vietnam	8823 4530

Number	Description
	Accessories
C3289A	HP 2500C Adobe Postscript Upgrade Kit
C2950A	IEEE 1284-Compliant Parallel Cable 2m
C2951A	IEEE 1284-Compliant Parallel Cable 3m
C3390A	HP 2500C PCL5 Upgrade Kit
C3391A	HP 16 MB (1 x 16 MB) 60ns EDO SIMM
C3392A	HP 32 MB (1 x 32 MB) 60ns EDO SIMM
	Any HP JetDirect MIO print server cards
	Printheads
C4800A	HP Black No.10 Printhead
C4801A	HP Cyan No.10 Printhead
C4802A	HP Magenta No.10 Printhead
C4803A	HP Yellow No.10 Printhead
	Ink Cartridges
C4844A	HP No.10 Large Black Ink Cartridge
C4841A	HP No.10 Cyan Ink Cartridge
C4842A	HP No.10 Yellow Ink Cartridge
C4843A	HP No.10 Magenta Ink Cartridge
	HP Bright White Inkjet Paper
C1857A	US B-size, 200 sheets: 11 x 17 in.
C1858A	A3, 200 sheets: 297 x 420 mm
C1824A	US Letter, 500 sheets: 8.5 x 11 in.
C1825A	A4, 500 sheets: 210 x 297 mm
	HP Premium Inkjet Paper
C1855A	US B-size, 100 sheets: 11 x 17 in.
C1856A	A3, 100 sheets: 297 x 420 mm
51634Y	US Letter, 200 sheets: 8.5 x 11 in.
51634Z	A4, 200 sheets: 210 x 297 mm
	HP Premium Inkjet Heavyweight Paper
C1852A	US Letter, 100 sheets: 8.5 x 11 in.
C1853A	A4, 100 sheets: 210 x 297 mm

	HP Premium Photo Paper
C6058A	US B-size, 100 sheets: 11 x 17 in.
C6059A	A3, 20 sheets: 297 x 420 mm
C6039A	US Letter, 15 sheets: 8.5 x 11 in.
C6040A	A4 (European), 15 sheets: 210 x 297 mm
C6043A	A4 (Asian), 15 sheets: 210 x 297 mm
	HP Premium Transparency Film
C3834A	US Letter, 50 sheets: 8.5 x 11 in.
C3828A	US Letter, 20 sheets: 8.5 x 11 in.
C3835A	A4, 50 sheets: 210 x 297 mm
C3832A	A4, 20 sheets: 210 x 297 mm
	HP Premium Inkjet Rapid-Dry Transparencies
C6051A	US Letter, 50 sheets: 8.5 x 11 in.
C6053A	A4, 50 sheets: 210 x 297 mm
	HP Iron-On T-Shirt Transfers
C6049A	US Letter, 10 sheets: 8.5 x 11 in.
C6050A	A4, 10 sheets: 210 x 297 mm
	HP Greeting Card Paper
C1812A	US Letter, 20 sheets, 20 envelopes
C6042A	A4, 20 sheets, 20 envelopes
	HP White Labels
92296A	1" x 2 5/8" Addressing Labels
92296B	1 1/3" x 4" Addressing Labels
92296C	1" x 4" Addressing Labels
92296D	2" x 4" Shipping Labels
92296E	3 1/3" x 4" Shipping Labels
92296F	1/2" x 1 3/4" Return Address Labels
92296K	8 1/2" x 11" White Full Sheet Labels
92296L	99.1 x 38.1 mm Addressing Labels
92296M	99.1 x 33.8 mm Addressing Labels
92296N	63.5 x 38.1 mm Addressing Labels
92296P	100 x 51 mm Addressing Labels
92296R	199.6 x 289 mm, Full Sheet Labels
C4296A	99.1 x 67.7 mm, Parcel Labels
C4297A	63.5 x 46.6 mm Addressing Labels

HP

2500C/C+/CM

Printer Specifications

Print Method	Plain paper drop on-demand thermal inkjet printing		
Print Speed ¹ Black	Black Text	Letter / A4	11 x 17 / A3
	Econofast Mode	11 ppm	7 ppm
	Normal Mode	9 ppm	5 ppm
	Best Mode	7.5 ppm	4.5 ppm
Print Speed ¹ Color	Color Highlights	Letter / A4	11 x 17 / A3
	Econofast Mode	9 ppm	5.5 ppm
	Normal Mode	6.5 ppm	3.5 ppm
	Best Mode	5.5 ppm	2.5 ppm
	Mixed Text & Graphics	Letter / A4	11 x 17 / A3
	Econofast Mode	9 ppm	6 ppm
	Normal Mode	3 ppm	2 ppm
	Best Mode	1.5 ppm	1 ppm
	Full Page Color Highlights	Letter / A4	11 x 17 / A3
	Econofast Mode	2.5 ppm	1.7 ppm
	Normal Mode	1.2 ppm	0.7 ppm
	Best Mode	0.4 ppm	0.3 ppm
	¹ Approximate figures. Exact speed is dependent on the system configuration, software program, and document complexity		
Black Resolution	Up to 600x600 dpi		
Color Resolution	PhotoREt II for photo quality		
Printhead Nozzles	304 black, 912 color (304 per color printhead)		
Printer Command Language	HP PCL 3e HP PCL 5Ce (standard with HP 2500C+, and for Europe only, standard with HP 2500C/CM) Adobe® PostScript® 3™ (with HP 2500CM only)		
Font Capability	9 built-in bitmap typefaces at selected sizes HP FontSmart v2.5 (110 TrueType fonts for Windows) (Euro symbol support available in all fonts) HP FontSmart software provides easy-to-use font management capabilities 136 PostScript fonts with Adobe PostScript Level 3 (Euro symbol supported in the Symbol font)		
Memory	HP 2500C 4 MB standard RAM 12 MB standard RAM (for Europe only) HP 2500C+ 12 MB standard RAM Two 72-pin SIMM slots for additional memory (EDO, 60 ns) expansion up to a total of 76 MB		

Memory	<p>HP 2500CM 20 MB standard RAM Two 72-pin SIMM slots for additional memory (EDO, 60ns) expansion up to a total of 76 MB</p> <p><i>SIMM Memory upgrade apply only to PostScript and PCL 5Ce and are to be in increments of 16MB.</i></p>
Connectivity / Network Management	<p>HP 2500C & HP 2500C+ Network-capable printer for DOS and Windows environments HP PCL 3e Windows Driver Support for Windows NT 4.0, Windows 3.1x/95/98, Optional PCL 5Ce (PCL 5Ce is standard with HP 2500C+ and for Europe, standard with HP 2500C/CM) Centronics parallel, IEEE 1284 compliant One network interface slot accepts optional HP MIO Print Servers with support for Novell Netware, Microsoft LAN Manager, Windows for Workgroups, Windows NT, IBM LAN Server, IBM OS/2 Warp* and AppleTalk* (EtherTalk)</p> <p>HP 2500CM Network-ready printer for DOS, Windows and Macintosh environments HP PCL 3e Windows Driver Support for Windows NT 4.0, Windows 3.1x/95/98, Optional PCL 5Ce (for Europe, this is standard with HP 2500CM) Centronics parallel, IEEE 1284 compliant HP MIO 10/100T/BNC print server with support for Novell Netware Microsoft LAN Manager, Windows for Workgroups, Windows NT, IBM LAN Server, IBM OS/2 Warp*, Unix environment* and AppleTalk* (EtherTalk) Supports networking protocols IPX/SPX, TCP/IP, DLC/LLC, AppleTalk* and NetBEUI Adobe PostScript 3 drivers for Windows and Macintosh* Automatic switching between languages and ports.</p> <p>HP JetAdmin printer management software provides easy printer setup, configuration and management. Latest versions available from HP's web site (http://www.hp.com/go/jetadmin) HP WebJetAdmin printer management software available from HP's web site (http://www.hp.com/go/webjetadmin) for simple installation, configuration and management from a common web browser.</p> <p>*Macintosh Postscript support will be available to Postscript users as a free upgrade in Summer 1999.</p>

Paper Size Handling	<p>Minimum Width: 76.2 mm (4 in.) x 127.0 mm (6 in.) Maximum Width: 330 mm (13 in.) x 483 mm (19 in.)</p>
Maximum Print Area	<p>PCL: 320 mm (12.61 in.) x 470 mm (18.49 in.) on 13 in. x 19 in. media PostScript: 289.56 mm (11.4 in.) x 441.96 mm (17.4 in.) or 302.26 mm (11.9 in.) x 426.72 mm (16.8 in.) on 13 in. x 19 in. media.</p>
Media Size, Type and Handling Support	<p>Standard input capacity of 400 sheets through two trays (Tray 2 & 3) of 150 sheet and 250 sheet capacity. Standard output capacity of 150 sheets (face-up) Rear Manual feed – single sheet or card only Built-in media size sensors prevents printing on the wrong size of media</p> <p>Tray 1 (Input / Output Tray) Sheets / Labels : up to 10 60 to 135 g/m² (16 to 36 lb. Bond) Cardstock : up to 4 110 to 200 g/m² (110 lb. index maximum) Users are recommended to use the rear manual feed if thicker media does not pick.</p> <p><i>Media sizes supported:</i> Paper: All standard paper sizes from 4 in.x6 in. (101.6mm x 152.4mm) to 13in.x19in. (330 mm x 483 mm) Transparencies: U.S. Letter 8.5 x 11 in., European A4 210 x 297 mm Cards: U.S. Index card 4 x 6 in., Index card 5 x 8 in.; European A5 card 148.5 x 210 mm, European A6 105 x 148.5 mm, Postcard 100 x 148 mm supported via Tray 1 and the rear manual feed only Labels: U.S. Labels, 8.5 x 11 in.; European A4 labels, 210 x 297 mm</p> <p>Tray 2 (Upper Tray) Sheets / Labels : up to 150 60 to 135 g/m² (16 to 36 lb. Bond) Cardstock : up to 60 110 to 200 g/m² (110 lb. index maximum) Users are recommended to use the rear manual feed if thicker media does not pick</p> <p><i>Media sizes supported:</i> Paper: U.S. Super B 13 x 19 in., U.S. Tabloid 11 x 17 in., U.S. Legal 8.5 x 14 in., U.S. Letter 8.5 x 11 in., European Super A3 330 mm x 483 mm, European A3 297 x 420 mm, European A4 210 x 297 mm, European B4 257 x 364 mm Transparencies: U.S. Letter 8.5 x 11 in., European A4 210 x 297 mm Labels: U.S. Labels, 8.5 x 11 in.; European A4 labels, 210 x 297 m</p>

Media Size, Type and Handling Support	<p>Tray 3 (Lower Tray)</p> <p>Sheets : up to 250 60 to 135 g/m² (16 to 36 lb. Bond)</p> <p><i>Media sizes supported:</i> Paper: U.S. Super B 13 x 19 in., U.S. Tabloid 11 x 17 in., U.S. Legal 8.5 x 14 in., U.S. Letter 8.5 x 11 in., European Super A3 330 mm x 483 mm, European A3 297 x 420 mm, European A4 210 x 297 mm, European B4 257 x 364 mm Transparencies: U.S. Letter 8.5 x 11 in., European A4 210 x 297 mm Labels: U.S. Labels, 8.5 x 11 in.; European A4 labels, 210 x 297 mm</p> <p>Rear Manual Feed Paper, transparency, label or cards up to 0.3 mm thickness (0.012 in.) or approx. 200 g/m² (110 lb. index maximum)</p> <p><i>Media sizes supported:</i> All media sizes from 4 in.x6 in. (101.6mm x 152.4mm) to 13in.x19in. (330 mm x 483 mm) Media types supported is similar to Tray 1</p>
Recommended Media Weight	<p>All input paths handle the following paper weights with the rear straight-through paper path handling up to 0.3mm thickness of paper</p> <p>Paper: 60 to 135 g/m² (16 to 36 lb. Bond) Cards: 110 to 200 g/m² (110 lb. Index) Straight-through path: up to 0.3 mm thickness (0.012 in.) or 220 g/m² (110 lb. Index)</p>
Smart Software Features	<p>Built-in printer software features: HP ZoomSmart scaling technology, Billboard, Handout (N-up printing), Mirror, Watermark, Print Preview, Quick Sets, LaserJet Margin Emulation, 2-sided Printing (manual duplex), Booklet</p>
Control Panel	<p>Intuitive operation and complete, easy-to-understand messages Two-line LCD display and 2 LEDs Buttons: (Go), Job Cancel, Menu, Item, Value, Select Indicators: Attention, Ready Messages can be displayed in 14 languages: English, French, Italian, German, Spanish, Portuguese, Dutch, Norwegian, Finnish, Swedish, Danish, Polish, Czech and Russian</p>
Operating Environment	<p>Operating temperature: 5° to 40°C (41° to 104°F) Recommended operating conditions: 15° to 35°C (59° to 95°F) Storage temperature: -40° to 60°C (-4° to 140°F) Relative Humidity: 20 to 80% RH non-condensing Noise levels per ISO 9614-1: Sound Pressure, LwAM 62 dB(A)</p>

Power Supply	Built-in Universal Power Supply
Power Requirements	Input Voltage 100 – 240 AC (±10%), 50/60 Hz (±3 Hz)
Power Consumption	Less than 2 watts when off, 8 watts maximum non-printing, 35 watts average printing, 65 watts printing
Dimensions	<p>With paper tray closed 685 mm (26.97 in.) W x 610 mm (24.02 in.) D x 337 mm (13.27 in.) H</p> <p>With paper tray fully extended 685 mm (26.97 in.) W x 745 mm (29.33 in.) D x 337 mm (13.27 in.) H</p> <p>Desk Space Required 685 mm (26.97 in.) W x 532 (20.94 in.) D</p>
Weight	<p>26.5 kg (58.48 lb.) without ink cartridges and printheads</p> <p>27.0 kg (59.2 lb.) with ink cartridges and printheads</p>
Reliability & Estimated Usage	up to a peak of 12,000 pages/month
System Requirements	<p>Minimum: Windows 3.1x: 486DX-66, 8MB RAM Windows 95/98: 486DX-100, 8MB RAM Windows NT 4.0: 486DX-100, 16MB RAM Macintosh System: 7.5.3: 68040, 8MB RAM</p> <p>Recommended: Windows 3.1x: Pentium 150/166, 16 MB RAM Windows 95/98, Pentium 150/166, 16 MB RAM Windows NT 4.0, Pentium 150/166, 32MB RAM Macintosh System 8 or later: PowerPC, 16MB RAM</p> <p>50 MB Free HardDisk space for 11 x 17 or A3 size printing. Graphics intensive files may require more disk space.</p>
Warranty	1 year on-site warranty
Year 2000 Compliance	HP 2500C series printers are Year 2000-compliant
Product Certifications HP 2500C/CM	<p>Safety Certifications: CCIB (China), CSA (Canada), PSB (Singapore), UL (USA), NOM-I-NYCE (Mexico), TUV-GS (Germany), SABS (South Africa), JUN (Korea), LS (Lithuania), EEI (Estonia), CE (European Union), B mark (Poland), GOST (Russia)</p> <p>EMC/EMI Certifications: FCC Title 47 CFR Part 15 Class A/B (USA), ICES-003 (Canada), CTICK (Australia & New Zealand), VCCI (Japan), CE (European Union), BCIQ (Taiwan), RRL (Korea)</p> <p>Pantone Calibrated</p>
Product Certifications HP 2500C+	<p>Safety Certifications: CSA (Canada), UL (USA), NOM-I-NYCE (Mexico)</p> <p>EMI Certifications: FCC Title 47 CFR Part 15 Class B (USA), ICES-003 (Canada)</p>

HP Product	Duration of Limited Warranty
Software	90 Days
Ink Cartridges	90 Days
Printheads	1 Year
Printer	1 Year

A. Extent of Limited Warranty

1. Hewlett-Packard (HP) warrants to the end-user customer that the HP products specified above will be free from defects in materials and workmanship for the duration specified above, which duration begins on the date of purchase by the customer.
Customer is responsible for maintaining proof of date of purchase.
2. For software products, HP's limited warranty applies only to a failure to execute programming instructions. HP does not warrant that the operation of any product will be uninterrupted or error free.
3. HP's limited warranty covers only those defects which arise as a result of normal use of the product, and do not apply to any:
 - a. Improper or inadequate maintenance or modification;
 - b. Software, interfacing, media, parts, or supplies not provided or supported by HP; or
 - c. Operation outside the product's specifications.
4. For HP printer products, the use of a non-HP ink cartridge or a refilled ink cartridge does not affect either the warranty to the customer or any HP support contract with the customer. However, if printer failure or damage is attributable to the use of a non-HP or refilled ink cartridge, HP will charge its standard time and materials charges to service the printer for the particular failure or damage.
5. If HP receives, during the applicable warranty period, notice of a defect in any software, media, or ink cartridge product which is covered by HP's warranty, HP shall replace the defective product. If HP receives, during the applicable warranty period, notice of a defect in any hardware product which is covered by HP's warranty, HP shall either repair or replace the defective product, at HP's option.
6. If HP is unable to repair or replace, as applicable, a defective product which is covered by HP's warranty, HP shall, within a reasonable time after being notified of the defect, refund the purchase price for the product.
7. HP shall have no obligation to repair, replace, or refund until the customer returns the defective product to HP.

8. Any replacement product may be either new or like-new, provided that it has functionality at least equal to that of the product being replaced.
9. HP's limited warranty is valid in any country where the covered HP product is distributed by HP except for the Middle-East, Africa, Argentina, Brazil, Mexico, Venezuela, and France's "Départements D'Outre-Mer"; for those excepted areas, the warranty is valid only in the country of purchase. Contracts for additional warranty services, such as on-site service, may be available for any authorized HP service facility where the listed HP product is distributed by HP or an authorized importer.

B. Limitations of Warranty

1. TO THE EXTENT ALLOWED BY LOCAL LAW, NEITHER HP NOR ITS THIRD PARTY SUPPLIERS MAKE ANY OTHER WARRANTY OR CONDITION OF ANY KIND, WHETHER EXPRESS OR IMPLIED, WITH RESPECT TO THE HP PRODUCTS, AND SPECIFICALLY DISCLAIM THE IMPLIED WARRANTIES OR CONDITIONS OF MERCHANTABILITY, SATISFACTORY QUALITY, AND FITNESS FOR A PARTICULAR PURPOSE.

C. Limitations of Liability

1. To the extent allowed by local law, the remedies provided in this Warranty Statement are the customer's sole and exclusive remedies.
2. TO THE EXTENT ALLOWED BY LOCAL LAW, EXCEPT FOR THE OBLIGATIONS SPECIFICALLY SET FORTH IN THIS WARRANTY STATEMENT, IN NO EVENT SHALL HP OR ITS THIRD PARTY SUPPLIERS BE LIABLE FOR DIRECT, INDIRECT, SPECIAL, INCIDENTAL, OR CONSEQUENTIAL DAMAGES, WHETHER BASED ON CONTRACT, TORT, OR ANY OTHER LEGAL THEORY AND WHETHER ADVISED OF THE POSSIBILITY OF SUCH DAMAGES.

D. Local Law

1. This Warranty Statement gives the customer specific legal rights. The customer may also have other rights which vary from state to state in the United States, from province to province in Canada, and from country to country elsewhere in the world.

2. To the extent that this Warranty Statement is inconsistent with local law, this Warranty Statement shall be deemed modified to be consistent with such local law. Under such local law, certain disclaimers and limitations of this Warranty Statement may not apply to the customer. For example, some states in the United States, as well as some governments outside the United States (including provinces in Canada), may:
 - a. Preclude the disclaimers and limitations in this Warranty Statement from limiting the statutory rights of a consumer (e.g. the United Kingdom);
 - b. Otherwise restrict the ability of a manufacturer to enforce such disclaimers or limitations; or
 - c. Grant the customer additional warranty rights, specify the duration of implied warranties which the manufacturer cannot disclaim, or not allow limitations on the duration of implied warranties.
3. FOR CONSUMER TRANSACTIONS IN AUSTRALIA AND NEW ZEALAND, THE TERMS IN THIS WARRANTY STATEMENT, EXCEPT TO THE EXTENT LAWFULLY PERMITTED, DO NOT EXCLUDE, RESTRICT, OR MODIFY, AND ARE IN ADDITION TO, THE MANDATORY STATUTORY RIGHTS APPLICABLE TO THE SALE OF HP PRODUCTS TO SUCH CUSTOMERS.

DECLARATION OF CONFORMITY

according to ISO/IEC Guide 22 and EN 45014

Manufacturer's Name: Hewlett-Packard Singapore (Pte) Ltd
Manufacturer's Address: Asia Hardcopy Manufacturing Operation
 20 Gul Way, Singapore 629196

declares, that the product

Product Name: HP2500C, HP2500Cse, HP2500Cxi, HP2500C+, HP2500CM*
Model Number: C2684A/B, C2686A, C2687A, C2692A, C2685A/B
Product Options: All

conforms to the following Product Specifications:

Safety: IEC 950: 1991 + A1 + A2 + A3 + A4/ EN 60950: 1992 + A1 + A2 + A3 + A4
 IEC825-1: 1993 / EN 60825-1:1994 class I for LEDs

EMC: CISPR 22: 1993 Class B / EN 55022: 1994 Class B
 CISPR 22: 1993 Class A / EN 55022: 1994 Class A*
 EN 50082-1: 1992
 IEC 801-2: 1991 / prEN 55024-2: 1992, 4kV CD, 8kV AD
 IEC 801-3: 1984 / prEN 55024-3: 1991, 3 V/m
 IEC 801-4: 1988 / prEN 55024-4: 1992, 0.5kV Signal Lines, 1kV Power Lines
 IEC 1000-3-2: 1995 / EN61000-3-2: 1995
 IEC 1000-3-3: 1994 / EN61000-3-3: 1995
 FCC Title 47 CFR, Part 15 Class B / VCCI-2
 FCC Title 47 CFR, Part 15 Class A / VCCI-I*
 AS / NZS 3548: 1995/ ICES-003, Issue 2

Supplementary Information:

- (1) The product herewith complies with the requirements of the Low Voltage Directive 73/23/EEC and the EMC Directive 89/336/EEC, and carries the CE Marking accordingly.
 - (2) The product was tested in a typical configuration with Hewlett Packard personal computer systems.
 - (3) This Device complies with Part 15 of the FCC Rules. Operation is subject to the following two conditions: (1) this device may not cause harmful interference, and (2) this device must accept any interference received, including interference that may cause undesired operation.
- *This printer contains Local Area Network (LAN) options. When the interface cable is attached to either of the IEEE802.3 connectors, the printer meets the requirements of CISPR 22: 1993 Class A / EN 55022: 1994 Class A

Singapore, May 1999

Chan Kum Yew, Quality Manager

Australia Contact: Product Regulations Manager, Hewlett-Packard Australia Ltd, 31-41 Joseph Street, Blackburn, Victoria 3130, Australia

European Contact: Your Local Hewlett-Packard Sales and Service Office or Hewlett-Packard GmbH, Department HQ-TRE / Standards Europe, Herrenberger Straße 130, D-71034 Böblingen (FAX: +49-7031-14-3143)

USA Contact: Corporate Product Regulations Manager, Hewlett-Packard Company, 3000 Hanover Street, Palo Alto, CA 94304 (Phone: 415-857-1501)

Power Cord Statement

The power cord cannot be repaired. If it is defective it should be discarded or returned to the supplier.

LEDs Classification

CLASS 1 LED PRODUCT
LED KLASSE
APPARECCHIO LED DI CLASSE
PRODUCT KLASY 1 z DIODAMI (ZWIECYCYMI) LED
Appareil à Diode Electroluminescente de Classe 1
ZARÍZENÍ LED TRÍdy 1
KLASS 1 LED APPARAT
LUOKAN 1 LED

Energy Consumption



この装置は、情報処理技術者電気障害自主規制協議会（VCCI）の基準に基づきクラスB情報技術装置です。この装置は、家庭環境で使用することをお勧めしています。この装置がラジオやテレビジョン受信機に近接して使用をせむると受信障害を引起すことがあります。取り扱い説明書に従って正しい取り扱いをして下さい。

Energy Star is a US registered service mark of United States Environmental Protection Agency

Safety Information



WARNING

Always follow basic safety precautions when using this product to reduce risk of injury from fire or electric shock.

1. Read and understand instructions in the User's Guide.
2. Use only a grounded electrical outlet when connecting this product to a power source. If you do not know whether the outlet is grounded, check with a qualified electrician.
3. Observe all warnings and instructions marked on the product.
4. Unplug this product from wall outlets before cleaning.
5. Do not install product or use this product near water, or when you are wet.
6. Install the product securely on a stable surface.

7. Install the product in a protected location where no one can step on or trip over the line cord, and the line cord will not be damaged.
8. If the product does not operate normally, see “Troubleshooting” section in the User’s Guide.

FCC Regulations

This equipment has been tested and found to comply with the specifications of Part 15 of the FCC rules. These limits are designed to provide reasonable protection against harmful interference in a residential installation. This equipment generates, uses, and can radiate radio frequency energy, and if not installed and used in accordance with the instructions, may cause harmful interference to radio communications. However, there is no guarantee that interference will not occur in a particular installation. If this equipment does cause harmful interference to radio or television reception, which can be determined by turning the equipment off and on, the user is encouraged to try to correct the interference by one or more of the following measures:

- Reorient or relocate receiving antenna.
- Increase separation between equipment and receiver.
- Connect equipment to an outlet on a circuit different from that to which the receive is connected.
- Consult your dealer or an experienced radio/TV technician.



Expanding Possibilities

Printed on recycled paper 

©Copyright 1999
Hewlett-Packard Company

Printed in Germany
Manual Part No. C2684-90023

450 Alexandra Road
Singapore 119960
Singapore.
<http://www.hp.com/go/hp2500>



C2684-90023