

hp photosmart 7150

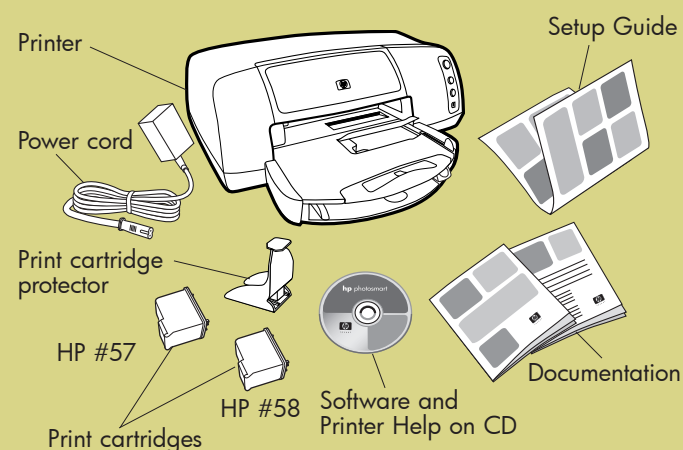
setup guide



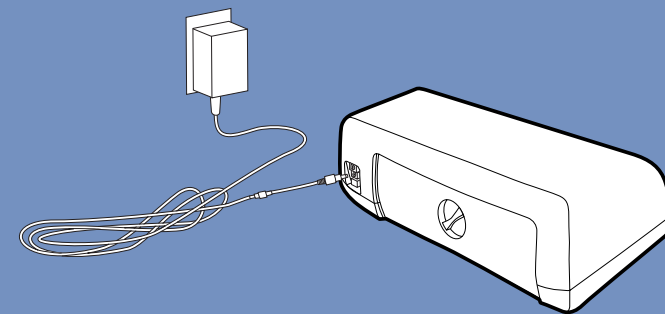
Windows PC:
Be sure to insert the HP
Photosmart CD before you
connect the printer to your
computer with the USB cable.



1 unpack your hp printer

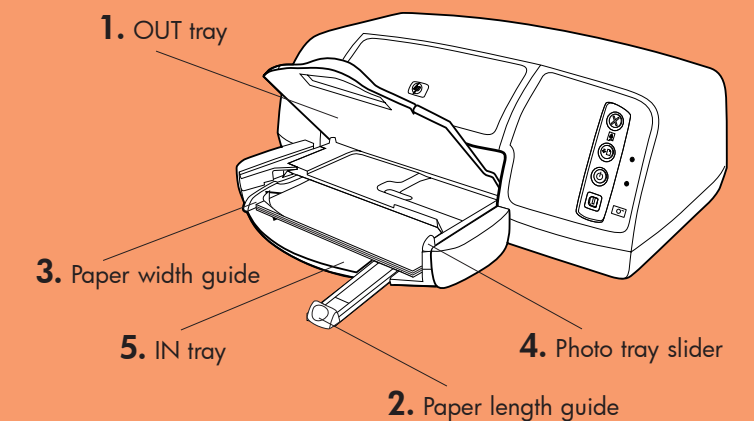


2 plug in the power cord



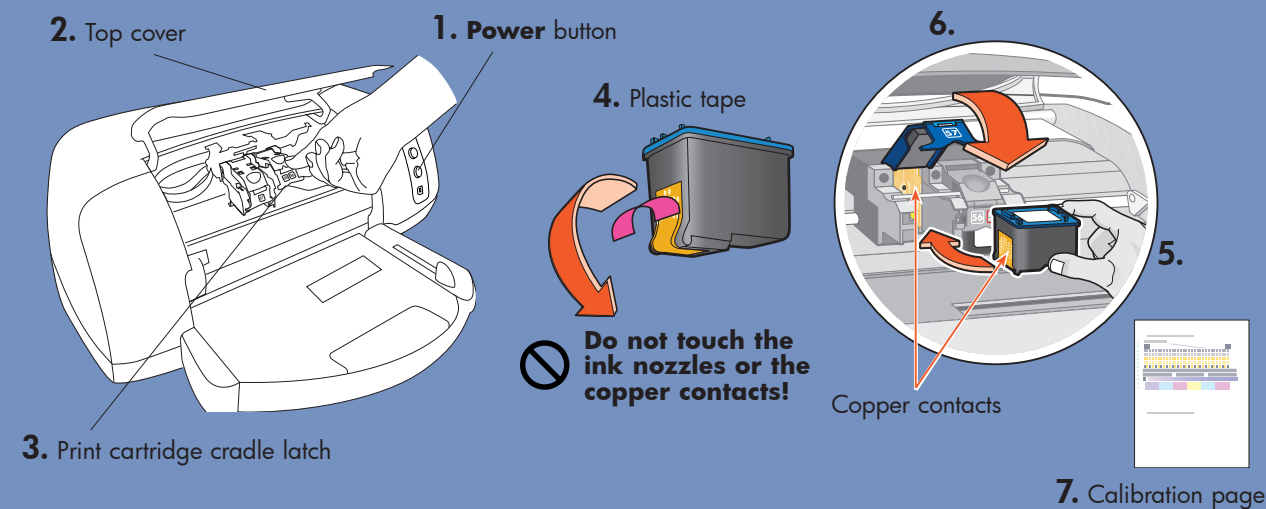
3 load plain paper in the IN tray

1. Lift the OUT tray.
2. Pull out the paper length guide on the IN tray.
3. Slide the paper width guide as far to the left as it will go.
4. Move the photo tray slider toward you until it stops. This disengages the photo tray.
5. Place a stack of plain paper into the IN tray.
6. Adjust the paper width guide and paper length guide to fit close to the edges of the paper without bending the paper.
7. Lower the OUT tray.



4 install the print cartridges

1. Press the **Power** button to turn the printer on.
2. Open the top cover. The print cartridge cradle moves to the center of the printer.
3. Pull out the bottom of the print cartridge cradle latches to open them.
4. Remove the plastic tape from each print cartridge.
5. Insert the **HP #57 tri-color** print cartridge in the left stall. Insert the **HP #58 photo** print cartridge in the right stall.
6. Close both print cartridge cradle latches by pulling the bottom of the latch out, pressing down, then releasing the latch.
7. Close the top cover. Wait while the printer performs internal diagnostics. After two minutes, a calibration page prints automatically. This verifies that the print cartridges are installed correctly.



install a black print cartridge

Be sure to purchase an HP #56 black print cartridge separately.

- To print text documents faster and better, replace the photo print cartridge in the right stall with an HP #56 black print cartridge.
- To go back to printing beautiful photos, remove the black print cartridge and reinstall the HP #58 photo print cartridge in the right stall.

Store the unused print cartridge in the protector that came with your printer.



Q1604-90182

5 install the hp photosmart printer software



Important: You must insert the HP Photosmart CD to install the printer software.

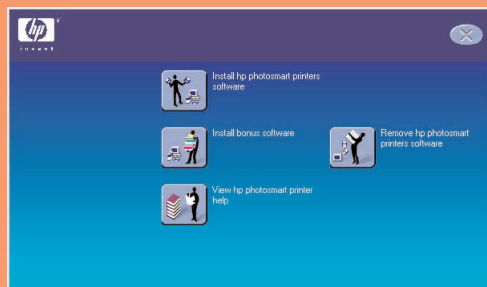
Note: For more detailed instructions or troubleshooting information, see the *HP Photosmart Software Setup & Product Support* booklet.

Windows PC

1. Be sure you have completed steps 1 through 4. If your computer is off, turn it on.

Important: Do not connect the printer to your computer until prompted. Disable virus-checking software before you install the printer software.

2. Insert the HP Photosmart CD into your computer's CD-ROM drive. The following dialog box appears.



3. Click **Install hp photosmart printers software**. Follow the onscreen instructions to install the printer software.

Note: If the dialog box does not appear, use Windows Explorer or My Computer to locate your CD-ROM drive, then double-click **setup.exe**. The HP Photosmart printer dialog box appears. Click **Install hp photosmart printers software**.

Important: Do not connect the printer to your computer until prompted.

4. Continue with step 6 to connect the printer to your computer.

Macintosh

1. Be sure you have completed steps 1 through 4. If your computer is off, turn it on.

Important: Disable virus-checking software before you install the printer software.

2. Continue with step 6 to connect the printer to your computer.

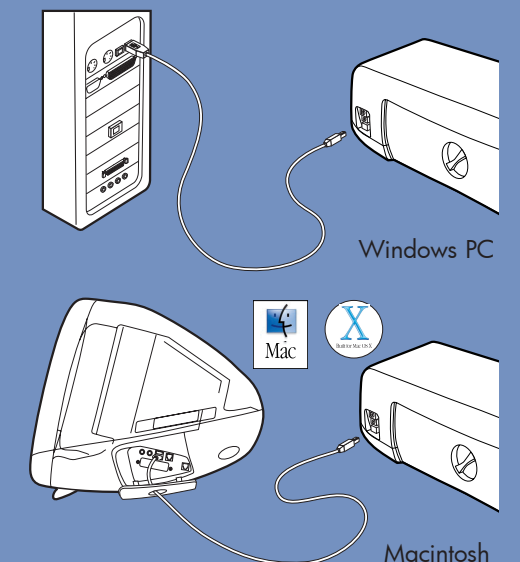
6 connect the printer to your computer

1. Purchase a USB-compliant interface cable separately. The cable must be less than 3 meters long.
2. Plug one end of the USB cable into your computer's USB port.
3. Plug the other end of the USB cable into the USB port on the **back** of your printer.

Note: Do **not** plug the USB cable into the camera port on the front of your printer. That port is for your HP direct-printing digital camera.

Important: Be sure the printer is connected directly to your computer. Installing the printer software when the printer is connected to the computer through a USB hub can cause errors and prevent a successful installation.

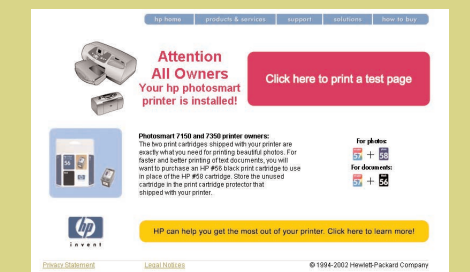
4. Continue with step 7 to finish the software installation.



7 finish installing the hp photosmart printer software

Windows PC

1. After connecting the printer to your computer, continue following the onscreen instructions to finish installing the HP Photosmart Printer Software and the HP Photo & Imaging Software.
2. At the end of the installation, the computer restarts. A welcome window appears. Click where it says **Click here to print a test page**.



Macintosh

1. After connecting the printer to your computer, insert the HP Photosmart CD into your computer's CD-ROM drive. Double-click the **HP Photosmart CD** icon.
2. Double-click the **HP Photosmart install** icon. Follow the onscreen instructions to install the printer software.

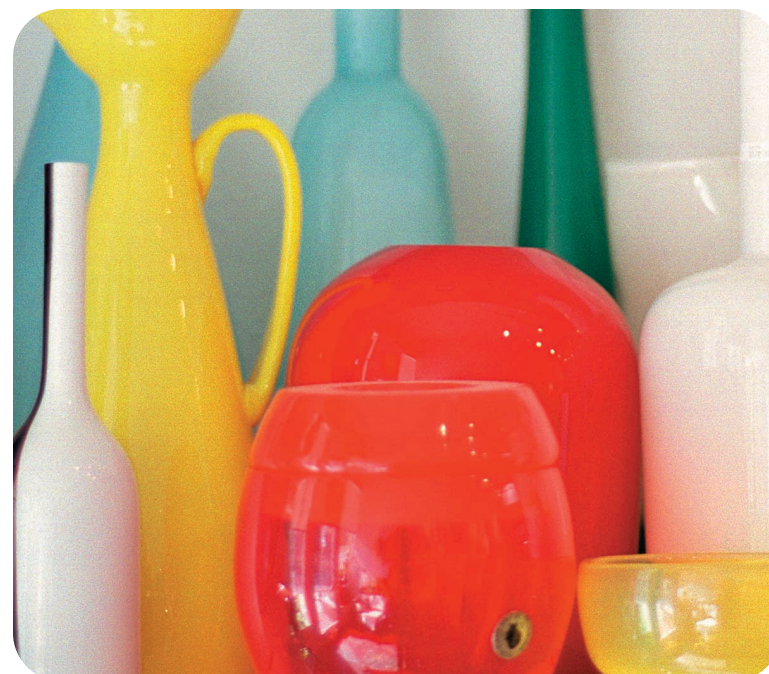
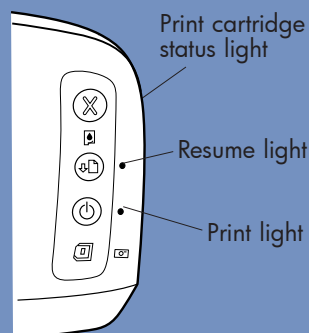
printer lights

Print cartridge status light — When this light is on or flashing, check the print cartridges.

Resume light — When this light is on or flashing, the printer is out of paper or has a paper jam.

Print light — When this light is on, the power is on. When this light flashes green, the printer is busy.

When all three lights are flashing, turn off the printer and unplug the power cord. Wait one minute, then plug the power cord back in and turn the printer on.




fun features

The HP Photosmart Printer Help tells you how to:

- Print photos directly from your digital camera without using your computer
- Use the included software to improve the quality of your photos
- Print high-quality photos using 4 x 6 inch (10 x 15 cm) photo paper in the photo tray
- Print photo album pages, transparencies, and other documents from your computer

getting assistance

- *HP Photosmart 7150 Basics Guide*
- *HP Photosmart Software Setup & Product Support* booklet
- HP Photosmart Printer Help
- www.hp.com/support
- 208.323.2551 (U.S.)

Printed in USA 08/02 v3 • Printed on recycled paper 
 © 2002 Hewlett-Packard Company
 Windows is a registered trademark of Microsoft Corporation
 Macintosh is a registered trademark of Apple Computer, Inc.