

hp psc 700 series



i n v e n t



**Macintosh Users
Your Basic Guide**

©Copyright Hewlett-Packard Company 2001

All rights are reserved. No part of the document may be photocopied, reproduced, or translated to another language without the prior written consent of Hewlett-Packard Company.

Portions Copyright © 1989-2001 Palomar Software Inc. The HP PSC 700 Series includes printer driver technology licensed from Palomar Software, Inc. www.palomar.com

Copyright © 1999-2001 Apple Computer, Inc.

Apple, the Apple logo, Mac, Mac logo, Macintosh, and Mac OS are trademarks of Apple Computer, Inc., registered in the U.S. and other countries.

Publication number: C6736-90144

First edition: March 2001

Printed in U.S.A., Mexico, Germany, or Singapore

Notice

The information contained in this document is subject to change without notice and should not be construed as a commitment by the Hewlett-Packard Company.

Hewlett-Packard assumes no responsibility for any errors that may appear in this document, nor does it make expressed or implied warranty of any kind with regard to this material, including, but not limited to, the implied warranties of merchantability and fitness for a particular purpose. The Hewlett-Packard Company shall not be liable for incidental or consequential damages in connection with, or arising out of the furnishing, performance, or use of this document and the program material which it describes.

Note: Regulatory information can be found in the "Technical information" section.



It is not lawful in many places to make copies of the following items. When in doubt, check with a legal representative first.

- Governmental paper or documents:
 - Passports
 - Immigration papers
 - Selective service papers
 - Identification badges, cards, or insignias
- Governmental stamps:
 - Postage stamps
 - Food stamps
- Checks or drafts drawn on Governmental agencies
- Paper currency, traveler's checks, or money orders
- Certificates of deposit
- Copyrighted works

Safety Information



WARNING

To prevent fire or shock hazard, do not expose this product to rain or any type of moisture.

Always follow basic safety precautions when using this product to reduce risk of injury from fire or electric shock.

WARNING: Potential Shock Hazard

- 1 Read and understand all instructions in the Setup Poster.
- 2 Use only a grounded electrical outlet when connecting the unit to a power source. If you do not know whether the outlet is grounded, check with a qualified electrician.
- 3 Observe all warnings and instructions marked on the product.
- 4 Unplug this product from wall outlets before cleaning.
- 5 Do not install or use this product near water or when you are wet.
- 6 Install the product securely on a stable surface.
- 7 Install the product in a protected location where no one can step on or trip over the line cord, and where the line cord will not be damaged.
- 8 If the product does not operate normally, see the online Troubleshooting help.
- 9 No operator-serviceable parts inside. Refer servicing to qualified service personnel.
- 10 Use in a well-ventilated area.

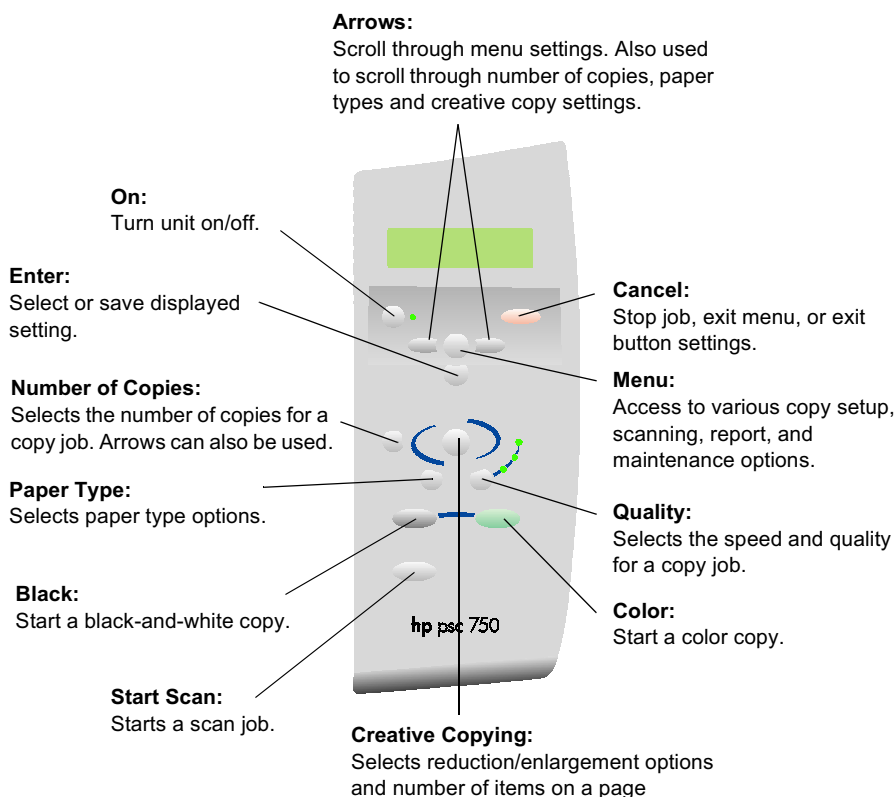
Contents

1	Review your unit's front panel.	1
2	Use your HP PSC with a computer	3
	Review the Director	3
	Customize the Director	4
	Review the Toolbox	5
3	Get help	7
	Where can I find help?	7
4	Load paper or transparency film, or load originals	9
	Load the input tray with letter-, legal-, or A4-size paper	9
	Review tips for loading specific types of paper	11
	Load the input tray with envelopes (only works with printing)	13
	Set the paper type	14
	Load originals on the glass	15
	Avoid paper jams	16
5	Use the workplace features	17
	Access the HP Workplace	17
	Annotate a document	18
	Create links	18
	Use links	19
6	Use the print features	21
	Start a print job	21
7	Use the scan features	23
	Begin a scan	24
8	Use the copy features	27
	Make copies	28
	Initiate the copy process from your HP PSC	28
	Initiate the copy process from your computer	28
	Reduce or enlarge a copy	29
	Lighten or darken a copy	30
	Shift the side margins	30
	Perform special copy jobs	31
	Make copies automatically fit	31
	Print several copies on one page	31
	Make a poster	32
	Stop copying	32

9	Additional setup information	33
	Remove and reinstall your HP PSC software	33
	Change the front-panel country or language	33
	Connect your USB port	34
10	Use Hewlett-Packard's support services	35
	Internet	35
	HP Customer Support	35
	HP Distribution Center	37
11	Technical information	39
	Power specifications	39
	Order print cartridges	39
	Regulatory notices	39
	Declaration of Conformity	41
	HP PSC Menu	45
	Creative Copy Menu	46

Review your unit's front panel

You can perform many functions using either the front panel or the HP PSC 700 Series software. The method you choose may depend on the function you need to perform, or it may depend on which is the most convenient.



Even if you do not connect your HP PSC to a computer (also called stand-alone use), you can use the front panel to process copy jobs. You can change a wide variety of settings using the front-panel buttons and menu system. Depending on your model, your front panel may look slightly different from the diagram.

Use your HP PSC with a computer

If you connect your HP PSC to a computer, you can work from the front panel or from the HP PSC 700 Series software.

For comprehensive information, see the fully searchable Onscreen Guide. To access the guide, go to the Director, click Tools, and choose View Onscreen Guide.

Review the Director

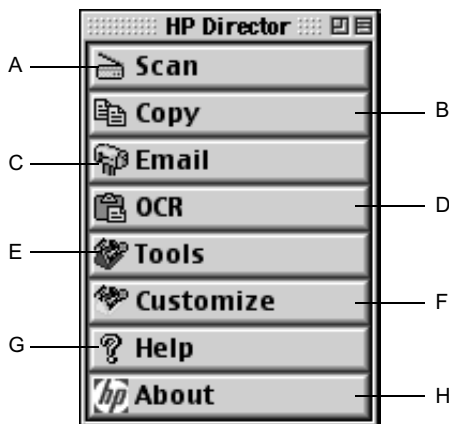
The Director is available through the desktop shortcut.

- Double-click the **HP Director** shortcut on the desktop.

It provides centralized access to all the capabilities of the HP all-in-one software.

The Director dynamically displays only the buttons that pertain to the attached HP PSC. You can customize the buttons that are displayed by clicking the Customize button. For more information, see “Customize the Director.”

The following graphic shows some of the features available through the Director. Consult the legend for a brief explanation of a specific feature.



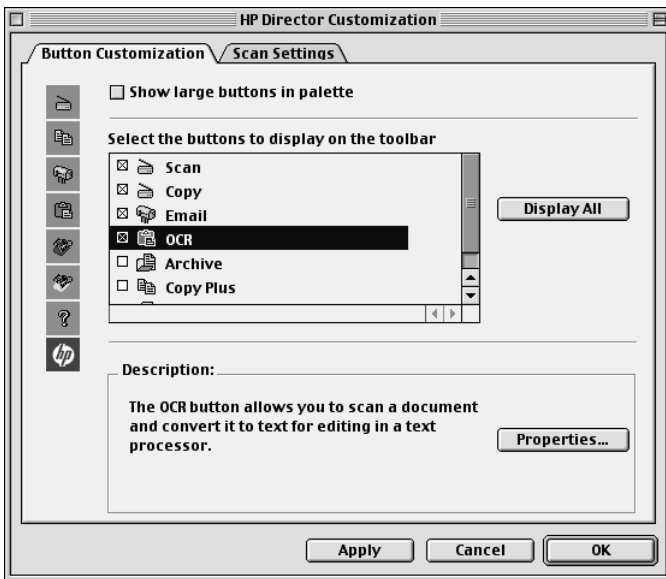
Feature	Purpose
A	Scan a document or photo and view it with HP Image Viewer, then send it to a destination.
B	Copy in black and white or color.
C	Scan a document or photo and attach it to an e-mail message.
D	Scan a document and convert it to text for editing in a text processor.
E	Access the Toolbox for device maintenance and configuration.
F	Customize the appearance and functionality of the Director.
G	Access Help for assistance with the HP software.
H	Access copyright information about the HP software.

Customize the Director

You can customize the Director to display different functions.

- 1 In the Director, click **Customize**.
The HP Director Customization dialog box appears.
- 2 In the **Customization** tab, check the box next to the buttons you want to display on the Director Toolbar.

TIP To display all buttons, click display all.



- 3 After you have selected the buttons, click **Apply**, and then click **OK** to close the dialog box.

Review the Toolbox

The Toolbox allows you to choose and configure your HP PSC.

- To access the Toolbox, go to the Director, and click **Tools**.



The Toolbox provides access to the following functions.

- **Device Chooser** opens the Chooser.
- **Device Configuration** opens the HP All-in-One Device Settings dialog box. This dialog box allows you to specify configuration options for the HP PSC.
- **View OnScreen Guide** displays the Onscreen Guide. The Onscreen Guide provides information on how to operate and maintain your HP PSC.
- **View Help** displays the Help. The Help provides a help system containing information on using your HP all-in-one software.

Get help

For comprehensive information, see the fully searchable Onscreen Guide. To access the guide, go to the Director, click Tools, and choose View Onscreen Guide.

Where can I find help?

For hardware and setup information:

- See the *HP PSC 700 Series: Setup Poster*. The printed Setup Poster comes in the box with your unit.

For software information:

- See the *HP PSC 700 Series: Onscreen Guide*.
- To access the Onscreen Guide, go to the Director, click Help, then click on Onscreen Guide. To access Help, go to the Director, click Tools, and then click View Help from the HP Toolbox dialog box.

For technical support:

- See the HP OfficeJet support website at www.officejetsupport.com

Load paper or transparency film, or load originals

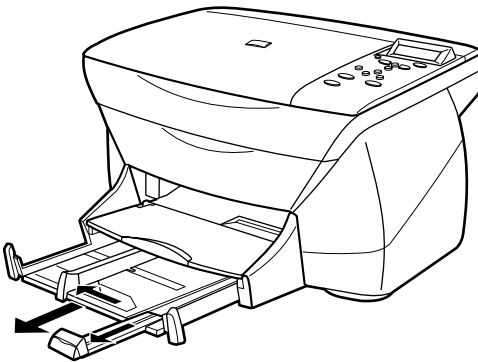
You can print and copy onto a variety of transparency films and paper types, weights, and sizes. It is important, however, that you choose the right paper and make sure that it is not damaged.

For comprehensive information, see the fully searchable Onscreen Guide. To access the guide, go to the Director, click Tools, and choose View Onscreen Guide.

Load the input tray with letter-, legal-, or A4-size paper

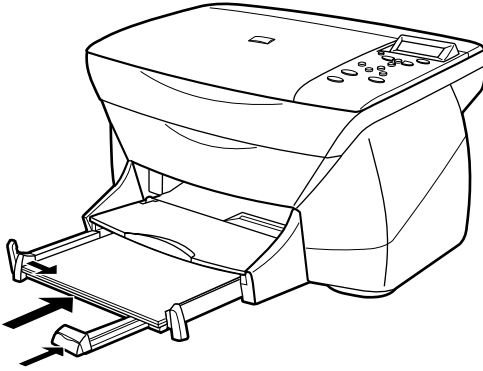
For best results, adjust the paper settings each time you change paper types or paper sizes. For more information, see “Set the paper type.”

- 1 Pull out the bottom (input) tray, and slide the paper-width and -length adjusters to their outermost positions.

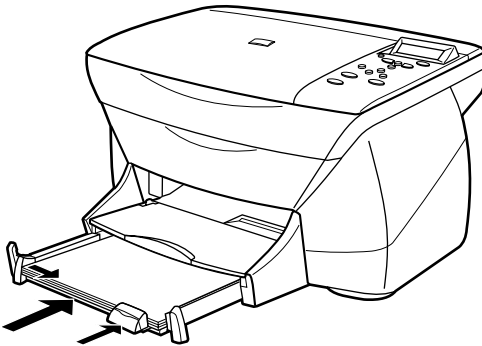


- 2 Tap the stack on a flat surface to even the edges of the paper, and then check the paper for the following:
 - Make sure it is free of rips, dust, wrinkles, and curled or bent edges.
 - Make sure all the paper in the stack is the same size and type, unless you are working with photo paper.
- 3 Insert paper into the input tray, print-side down and letterhead or top of page first, until it stops.

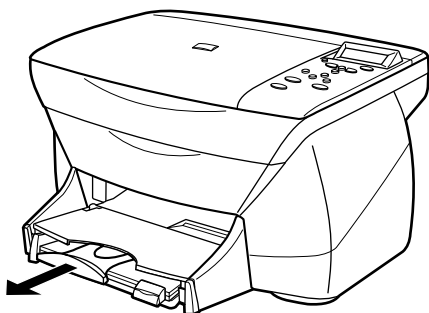
- Slide the paper-width and -length adjusters in until they stop at the edges of the paper, and be sure that the paper stack lies flat in the input tray and fits under the tab of the paper-length adjuster.
Do not overfill the input tray as this may cause paper jams.



- Push the input tray back in until it stops.



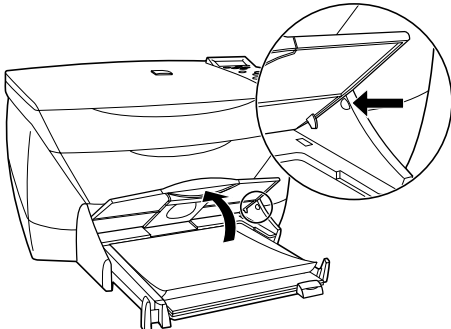
- 6 To prevent printed paper from possibly falling off the tray, fully extend the output-tray extender.



Review tips for loading specific types of paper

The following table provides guidelines for loading certain types of paper and film. For best results, adjust the paper settings each time you change paper types and paper sizes. For more information, see “Set the paper type”.

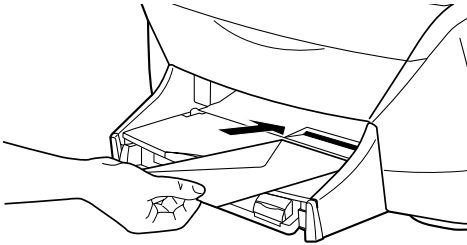
Paper	Tips
HP papers	<ul style="list-style-type: none"> • HP Premium Inkjet paper: Locate the gray arrow on the nonprinting side of the paper, and insert paper with the arrow side facing up. • HP Premium or Premium Plus Photo Paper: Load the glossy (print) side down. Always load at least five sheets of regular paper in the input tray first, and place the photo paper on top of the regular paper. • HP Premium Inkjet Transparency Film: Insert the film so that the white transparency strip, with arrows and the HP logo, is on top and is going into the tray first. • HP Iron-On T-shirt Transfers: Flatten the transfer sheet completely before using it; do not load curled sheets. (To prevent curling, keep transfer sheets sealed in the original package until just before using.) Manually feed one sheet at a time, with the unprinted side facing down (the blue stripe faces up). • HP Greeting Cards, Glossy Greeting Cards, or Textured Greeting Cards: Insert a small stack of HP greeting-card paper with the print-side down into the input tray until it stops. • HP Restickable Inkjet Stickers: Place the sheets in the input tray, print-side (sticker-side) down.

Paper	Tips
Legal-size paper	Even though the paper-length adjuster is fully extended, make sure that the input tray itself is pushed all the way in.
Labels (only works with printing)	<ul style="list-style-type: none"> • Always use letter- or A4-size label sheets designed for use with HP inkjet products (like Avery Inkjet Labels), and make sure that the labels are not over two years old. • Fan the stack of labels to make sure none of the pages are sticking together. • Place a stack of label sheets on top of standard paper in the input tray, print-side down. Do <i>not</i> insert labels one sheet at a time.
Postcards (only works with printing)	Insert a stack of postcards with the print-side down into the input tray until it stops. Line the postcards up on the right side of the input tray, slide the width adjuster up against the left side of the cards, and slide the length adjuster in until it stops.
Continuous (banner) paper (only works with printing)	<p>Continuous, banner paper is also known as computer or z-fold paper.</p> <ul style="list-style-type: none"> • Before loading banner paper, remove all other paper from the input tray, and then raise the output tray above the catch on the right side. <div style="text-align: center;">  <p data-bbox="917 925 1118 999">Raise the output tray above the catch on the right side.</p> </div> <ul style="list-style-type: none"> • If you use non-HP paper, use 20-lb. paper and fan the paper before loading it. • Verify that the stack of banner paper contains at least five pages in the stack. • Carefully tear off the perforated edge strips from both sides of the paper stack, if any, and unfold and refold the paper to make sure the pages do not stick together. • Put the paper in the input tray so that the unattached edge is at the top of the stack. Insert the first edge into the input tray until it stops, as shown in the figure above.

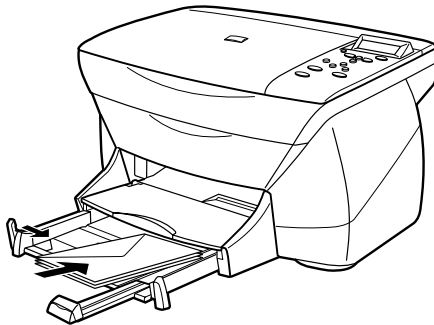
Load the input tray with envelopes (only works with printing)

Your HP PSC provides two methods for working with envelopes. Do *not* use shiny or embossed envelopes or envelopes that have clasps or windows.

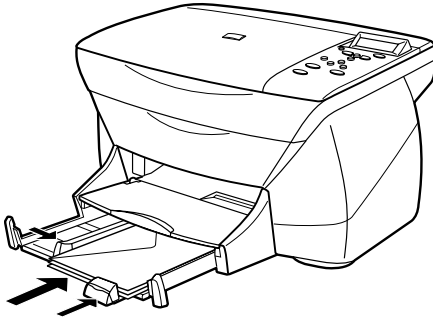
- If you are printing one envelope, use the envelope slot. Slide the envelope into the envelope slot, which is located on the right side toward the back of the output tray. The envelope should be inserted with the flap up and the flap positioned on the left, as shown in the illustration. Insert the leading edge of the envelope on the top of the output tray until it stops.



- If you are printing multiple envelopes, remove all paper from the input tray, and then slide a stack of envelopes into the tray, with the envelope flaps up and to the left (print-side down), until they stop.



Adjust the left paper guide against the envelopes (be careful not to bend the envelopes). Make sure the envelopes fit within the tray (do not overload it).



Consult the help files in your word processing software for details on how to format text for printing on envelopes.

Set the paper type



After you have loaded paper or film in the unit, select the paper type. Change this setting whenever you change the type of paper or film.

The paper types you specify for copying are independent of the paper types you specify for printing.

For more information, see “Recommended paper-type settings for copying” or “Recommended paper-type settings for printing” in the Onscreen Guide.

To do this for copying

Choose one of the following to set the paper type for current and future copy jobs:

- On the front panel, press **Paper Type**. Press  until the appropriate type appears. Press **Enter** to choose the displayed paper size. To save the paper type from the front panel, press **Menu** until **Copy Setup** appears, then press **Enter**. Press  until **Set Copy Defaults** appears, then press **Enter**. A message displays stating the Settings are saved as default.
- In the Director, click **COPY**. The Copy dialog box appears. In the **Copies** area, choose the appropriate paper type from the **Type of Paper** list, and then click **Save as Default**.

To do this for printing

Choose one of the following:

- To do this for future print jobs, open a document. From the **File** menu, choose **Print**, and then select **Paper/Type Quality** from the list. From the **Paper Type** list, choose the appropriate type, and then click **Save Settings**. When the dialog box appears, click **OK**. Click **Cancel** to dismiss the **HP PSC 700 Series Printer** dialog box.
- To do this for the current print job, open the document that you want to print. From the **File** menu, choose **Print**, and then select **Paper/Type Quality** from the list. From the **Paper Type** list, choose the appropriate type, and then click **Print**.

Load originals on the glass

You can process any original by placing it on the glass.

- 1 Lift the lid, and make sure that the glass is clean.

NOTE

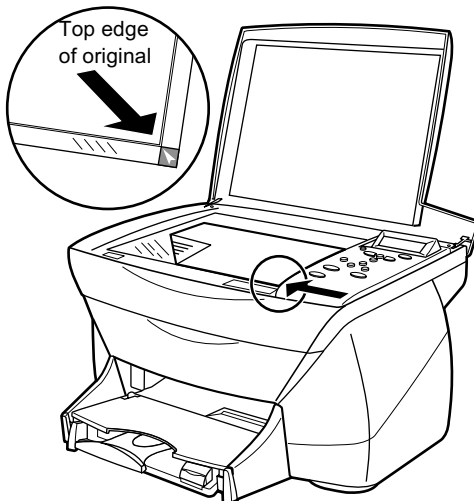
Many of the copy features under Creative Copying will not work correctly if the glass is not clean.

For more information, see “Clean the glass” in the Onscreen Guide.

- 2 Place the original face down on the glass in the front right corner with the sides of the originals touching the right and front edges

It is important that the front right corner is used when using the Creative Copy feature.

If you are copying from a transparency (that is, your original is printed on transparency film), place a blank piece of paper on top of the transparency.



- 3 Close the lid.

Avoid paper jams

To avoid paper jams, remove papers from the output tray frequently. Output tray capacity is affected by the type of paper and the amount of ink you are using. For more information about output-tray capacity, see “Technical information.”

Use the workplace features

The HP Workplace is a centralized program in which you can perform a variety of functions relating to your HP PSC. These functions include:

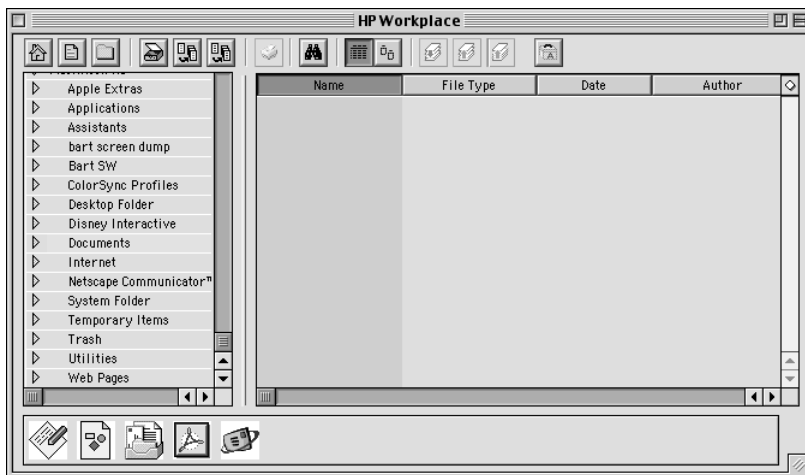
- Annotating documents.
- Creating and using links.

Access the HP Workplace

You can access the HP Workplace in the following ways:

- In the **HP All-in-One** folder on the computer's hard drive, locate and click the **HP Workplace** icon.
- Double-click on the ODF file (HP Workplace file).

This scans an image and sends it to the HP Workplace.



The left pane allows you to navigate through the computer's hard drives. The right pane displays the HP Workplace files in the folder selected in the left pane of the Workplace window.

Annotate a document

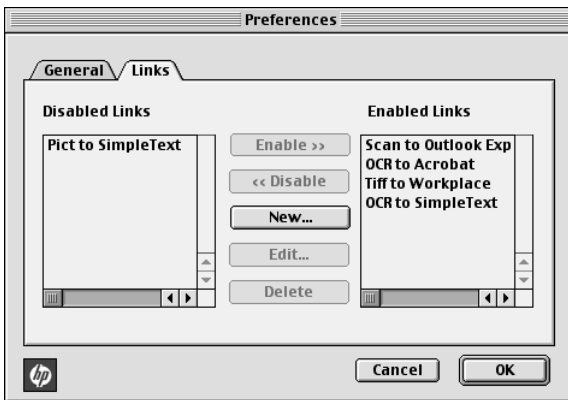
You can use the HP Workplace to add annotations, such as rubber stamps and notes, to scans that you have already saved on your hard drive.

- 1 From the workplace **File** menu, select **Import**, and then select **as Annotated Document**.
- 2 Locate and open the scanned image.
The selected image opens, along with the HP Workplace Tools, Align, and Properties windows.
- 3 Annotate the scanned image using the workplace tools.
For more information, see the help.
- 4 From the **File** menu, choose **Save**.
- 5 Specify a file name and location, and then click **Save**.

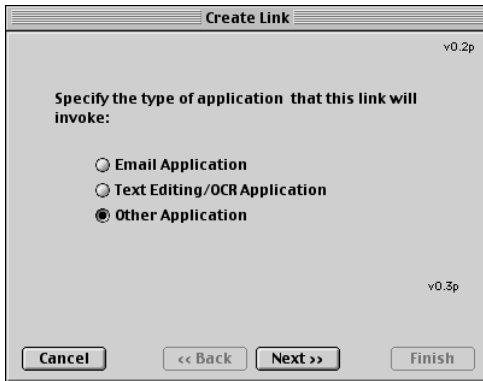
Create links

The HP Workplace allows you to set up links that associate a program with a particular icon. Links allow scanned images to be sent to the associated program.

- 1 From the workplace **Edit** menu, select **Preferences**.
The Preferences dialog box appears, with the General tab visible.
- 2 Click the **Links** tab.



- 3 Click **New**.
The Create Link dialog box appears.



- 4 Select the type of program that the link you are creating will invoke, and then click **Next**.

The Create Link dialog box displays a choice of specific programs associated with the category you have chosen.

- 5 For detailed instructions on invoking each of these programs, see the appropriate section in the Onscreen Guide.
 - For E-mail Application, see “E-mail programs.”
 - For Text Editing/OCR Application, see “Text-editing and OCR programs.”
 - For Other Application, see “Other programs.”

Use links

After you create a link, the associated icon appears on the bottom of the HP Workplace. You can then open a file in the associated program by dragging and dropping files onto the icon.

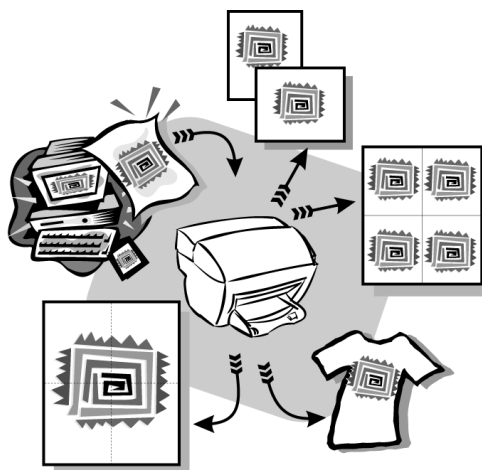
- 1 In the file-view pane of the workplace, locate the files that you want to send to the program associated with a particular link.
- 2 Click and drag the files onto the desired icon.

The selected document opens in the associated program.

NOTE

Multi-page files are exported into multiple files of the selected type before being passed to the link.

Use the print features



Most print settings are automatically handled by the program you are printing from or by HP's colorsmart technology. You only need to change the settings manually when you change print quality, print on specific types of paper or film, or use special features.

For comprehensive information, see the fully searchable Onscreen Guide. To access the guide, go to the Director, click Tools, and choose View Onscreen Guide.

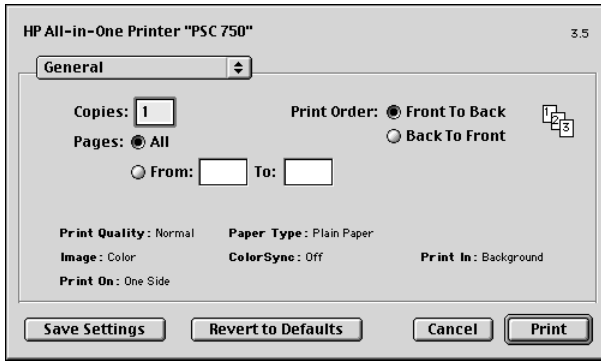
Start a print job

Follow these steps to start a print job from the software program that you used to create your document.

- 1 Load the input tray with the appropriate paper.

For more information, see "Load paper or transparency film, or load originals."

- From your program's **File** menu, select **Print**.
A Print dialog box appears.



- Make sure that the selected printer is **HP PSC Print**.
For more information, see "Select a printer" in the Onscreen Guide. If you need to change settings, select the appropriate option from the list, and set the options for your print job.
- Click **Print** to begin your print job.

Use the scan features



To use the scan features, your HP PSC and computer must be connected.

Scanning is the process of converting text and pictures into an electronic format for your computer. You can then use the converted (scanned) items for professional and personal projects.

- Professional uses: Scan text from an article you read, and bring it into your word processor so you can quote it in your report. Include pictures of your product in your brochure. Put your logo onto business cards that you print yourself.
- Personal uses: Scan pictures of your kids, and use the images in greeting cards (or e-mail the images to their grandparents). Put a photographic inventory of your house or office on a disk, and store it in a safe place.

You can scan just about anything, such as:

- Photos - to send out or place in documents.
- Magazine articles - to store on your computer.
- Text documents - to avoid retyping.
- 3D objects (be careful not to scratch the glass) - to put into catalogs and flyers.

For comprehensive information, see the fully searchable Onscreen Guide. To access the guide, go to the Director, click Tools, and choose View Onscreen Guide.

Begin a scan

You can initiate a scan from your computer or from your HP PSC.

To do this from your HP PSC

- 1 Load your original.

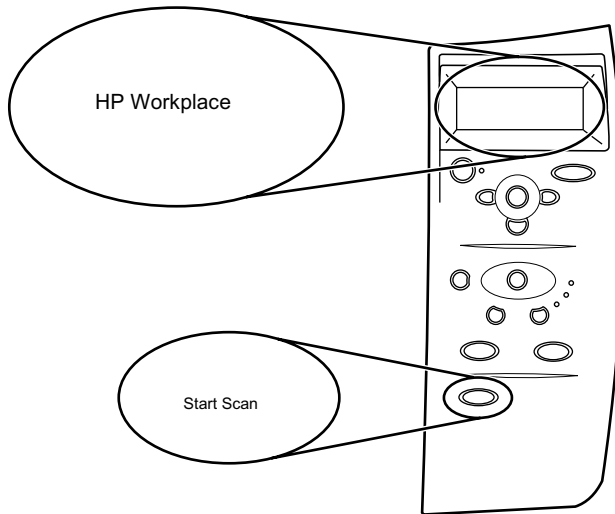
For more information, see “Load originals on the glass”.

- 2 Press the **Start Scan** button.

A pre-scan of the original will appear in the HP Workplace. From the HP Workplace, you can do minor editing of the image and if desired, add a title to the image.

When finished viewing, you can select a destination and click Send Now. A final scan of the original will be performed and will be sent to the selected destination. In addition to sending the image to a destination, you can print the image using the Creative Printing button or save the image.

- If you want to send the scan to the HP Workplace, press **Start Scan**.

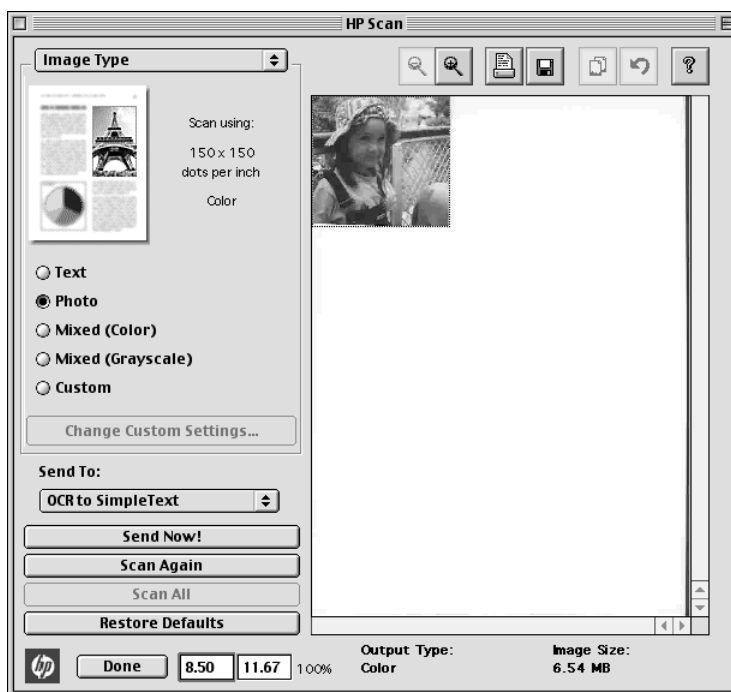


- If you want to send the scan to a specific program directly from the HP PSC, press **Menu** repeatedly until **Scan To** appears on the front-panel display, then press **Enter**. Press **◀** or **▶** until the applicable program appears on the front-panel display, and then press **Start Scan**.

Your HP PSC scans the document, launches the selected program, and displays the scanned image in that program.

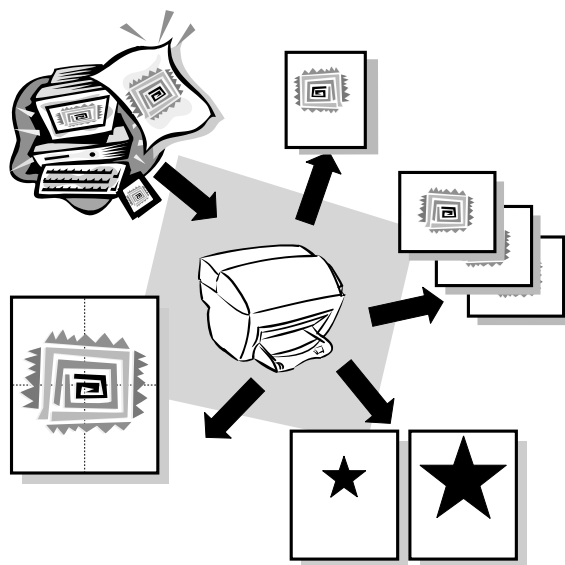
To do this from your computer

- 1 Load your original.
For more information, see “Load originals on the glass”.
- 2 In the Director, click SCAN.
The HP Scan Window appears.



- 3 Your HP PSC scans the document and the scanned image appears in the HP Scan Window. Place your cursor in the HP Scan Window, and then click and drag to highlight the portion of the image to be sent to the selected destination. Click **Send Now**.

Use the copy features



Using your HP PSC, you can:

- Produce high-quality color and black-and-white copies using a variety of paper types and sizes, including iron-on transfers.
- Reduce or enlarge the size of the copies you make from 25% to 400% of the copy's original size. (Percentages may vary between models.)
- Make the copy lighter or darker, adjust the color intensity, select the number of copies, and specify the quality of the copies you make.
- Use creative copying features to enlarge a vacation photo (or anything else) for display on a wall as a poster, make wallet-size photos to give to family members, make high-quality copies of photos using special photo paper, or copy a report onto transparency film for use in a presentation to a client.

For comprehensive information, see the fully searchable Onscreen Guide. To access the guide, go to the Director, click Tools, and choose View Onscreen Guide.

Make copies

You can make copies using the front panel of your unit or using your computer. Many copy features are available using either method. However, while you may find that the software offers easier access to special copy features, not all functions are available.

All copy settings selected on the front panel are reset *two minutes* after the unit completes the copy job unless you save the settings as the default settings. Settings that you set in the software's Copy dialog box are reset *immediately* after you process the job. (Settings changed in the software's Copy Settings dialog box remain in effect until you change them again. For more information, see "Change settings for all future copy jobs" in the Onscreen Guide.)

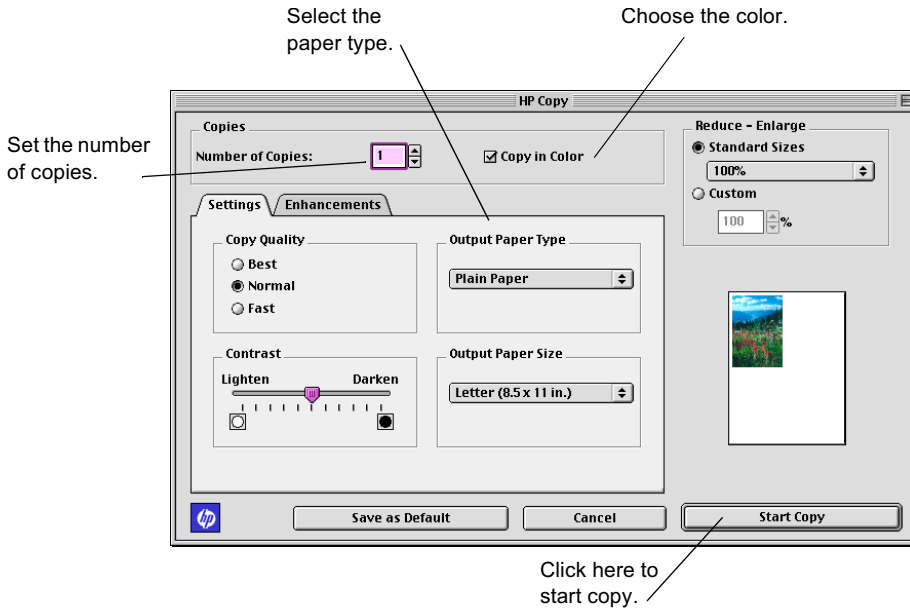
Initiate the copy process from your HP PSC

- 1 Load the input tray with the appropriate paper. Follow these steps to start a copy job from your unit. If you are using anything other than plain paper, press **Paper Type** until the appropriate type appears.
For more information, see "Load paper or transparency film, or load originals".
- 2 Load your original.
For more information, see "Load originals on the glass".
- 3 If you want to make more than one copy (the default), press **Number of Copies**, or if number of copies is displayed, press ◀ or ▶ until the number of desired copies appears.
For more information, see "Set the number of copies" in the Onscreen Guide.
- 4 Change any other applicable settings, such as Creative Copying.
- 5 Press **Start Copy**, **Black** or **Color**.

Initiate the copy process from your computer

Follow these steps to start a copy job from your computer.

- 1 Load the input tray with the appropriate paper.
For more information, see "Load paper or transparency film, or load originals".
- 2 Load your original.
For more information, see "Load originals on the glass".
- 3 In the Director, click **COPY**.
The Copy dialog box appears.
- 4 Change any applicable settings.



5 Click **Start Copy**.

Reduce or enlarge a copy

You can reduce or enlarge a copy of an original using predefined settings, such as Fit to Page, Poster, or wallet by selecting your own reduction/enlargement percentages. These settings are available through the Creative Copying feature.

If the margins of your full-size original are smaller than the minimum margin settings supported by your unit, they will be cut off during the copy process. To obtain a full copy of a full-size original, select Custom 100%. You can also use the Fit to Page feature (for more information on this feature, see “Make copies automatically fit”). If you place your original on the glass, correct placement is very important in achieving the desired results for features such as Fit to Page. For more information, see “Load originals on the glass.”

To do this using the front panel

- 1 Press **Creative Copying**, then press ◀ or ▶ to scroll through the size options until the setting you want appears.
- 2 Press **Enter** to select the desired size.
- 3 If the option you selected supports multiple copies on a single page as indicated by ▶, select the number of copies that will be printed on a page by pressing ◀ or ▶ until the desired number of copies on a page appears.
- 4 Press **Start, Black or Color**.

NOTE If the number of copies of a photo on a single page does not come out as expected, try turning the original on the glass and start the copy again.

To do this using the computer

- 1 In the Director, click **COPY**.
The Copy dialog box appears, with the Settings tab visible.
- 2 In the **Reduce - Enlarge** area, choose the appropriate option.

NOTE The actual sizes available under the Reduce - Enlarge list will vary by country.

- 3 If actual or Custom size is selected under Reduce - Enlarge, enter the desired percentage in the % box, or use the arrow keys to adjust the percentage.

Lighten or darken a copy

Use Lighter/Darker to adjust the lightness and darkness of the copies you make.

To do this using the front panel

- 1 Press **Menu** repeatedly until **Copy Setup** appears.
- 2 Press **Enter** to select it.
- 3 Press **▶** until **Lighter/Darker** appears.
- 4 Press **Enter** to select it.
- 5 Press **◀** to lighten the copy or **▶** to darken it.
The circle moves to the left or right, depending on the button you press.
- 6 Press **Enter** to confirm.




To do this using the computer

- 1 In the Director, click **COPY**.
The Copy dialog box appears, with the Settings tab visible.
- 2 In the **Lighter/Darker** area, drag the slider to the right to make the image darker, or to the left to make the image lighter.

Shift the side margins

Use Margin Shift to move the information on the copy to the left or right for easier binding.

To do this using the front panel

- 1 Press **Menu** repeatedly until **Copy Setup** appears.
- 2 Press **Enter** to select it.
- 3 Press  until **Margin Shift** appears.
- 4 Press **Enter** to select it.
- 5 Choose one of the following to adjust the direction and level of shift.
 - To move the copied image to the left, press .
 - To move the copied image to the right, press .

A filled circle indicates the selected state.

The 100% reduction/enlargement is used automatically for Margin Shift unless the Creative Copying functions *Fit to Page* or a *Custom* percentage is specified prior to selecting Margin Shift.

- 6 Press **Enter** to use the setting you selected.

To do this using the computer

- 1 In the Director, click **COPY**.
The Copy dialog box appears, with the Settings tab visible.
- 2 In the **Special Features** area, select **Margin Shift**.
 - To move the copied image to the right, drag the slider to the right.
 - To move the copied image to the left, drag the slider to the left.

Perform special copy jobs

In addition to supporting standard copy jobs, your unit supports special jobs such as copying photos. This section describes the settings that you should select prior to pressing one of the Start Copy buttons.

Make copies automatically fit

Use Fit to Page to ensure that all the content of your original is captured in the copy output. Also use it to enlarge a small original to a full-size page.

TIP Make sure that the glass is clean and the original has been placed in the right-front corner of the glass.

To do this using the front panel

- 1 Press **Creative Copying** until **Fit to Page** appears.
- 2 Press **Enter**.

Print several copies on one page

Use Creative Copy to create multiple copies of your original on the same sheet.

Several common photo sizes are available under the Creative Copying menu. After selecting one of the available sizes you will be prompted to select the number of copies that can be placed on a page.

To do this using the front panel

- 1 Press **Creative Copying** repeatedly until the desired photo size appears.
- 2 Press **Enter**.
 - You will be prompted to select the number of images to be printed on one page. Press **▶** until the desired number of images appears.
- 3 Press **Enter** to confirm your selection.
- 4 Press **Start Copy, Black or Color**.

TIP If the number of copies is not as selected, try turning the photo on the glass and perform the job again.

Make a poster

Use Poster to divide your original into sections, and then enlarge the sections so that they can be assembled to create a poster.

To do this using the front panel

- 1 Press **Creative Copying** repeatedly until **Poster** appears.
- 2 Press **▶** until the desired width appears.
- 3 Press **Enter** to confirm your selection.
- 4 Press **Start Copy, Black or Color**.

TIP After selecting how wide the poster will be, the length is adjusted automatically such that it maintains same proportion as the original. If the original can't be enlarged to the selected poster size, an error message will appear. Try selecting a smaller poster size and perform the job again.

Stop copying

You can stop a copy job from your unit.

- On the front panel, press **Cancel**.

Additional setup information

This section provides assistance in resolving installation and configuration issues, and adding and removing software. The standard installation instructions are provided in your Setup Poster, which you should retain for later use.

Remove and reinstall your HP PSC software

When you remove a program, you need to remove all files associated with that program, not just the files you see in a particular program folder.

- 1 Double-click on Applications: HP All-in-One Software: Uninstaller.
- 2 Choose the device you are uninstalling software for from the dialog, then click OK (next).
- 3 Reinstall the HP PSC software.

For more information, see the Setup Poster that came with your HP PSC.

Change the front-panel country or language

The following steps help you change the language for your unit.

To do this using the front panel

- 1 Press **Menu**.
- 2 Press **▶** until **Maintenance** appears, and then press **Enter**.
- 3 Press **▶** until **Set Language and Country** appears, and then press **Enter**.
- 4 Press **▶** until the desired language appears, and then press **Start Copy, Black or Color**.
- 5 Press **Start Copy, Black or Color** to confirm.
A prompt displays asking to select the country where your HP PSC will be used. Specifying the country sets your photo sizes applicable for your region.
- 6 Press **▶** until desired country displays, and then press **Start Copy, Black or Color**.
- 7 Press **Start Copy, Black or Color** to confirm.

Connect your USB port

What works	What does not work
Plugging into the USB port on your computer	Plugging into the USB port located on the keyboard
Plugging into a powered hub that is connected to the USB port on your computer.	Plugging into a non-powered USB hub.

Use Hewlett-Packard's support services

This section explains the service information provided by Hewlett-Packard.

For comprehensive information, see the fully searchable Onscreen Guide. To access the guide, go to the Director, click Tools, and choose View Onscreen Guide.

If you are unable to find the answer you need in the printed or online documentation supplied with your product, you can contact one of the HP support services listed in the following pages. Some support services are available only in the U.S. and Canada, while others are available in many countries worldwide. If a support service number is not listed for your country, contact your nearest authorized HP dealer for help.

Internet

If you have Internet access, you can get help from the HP Web sites at either of the following:

www.hp.com/go/all-in-one

www.officejetsupport.com

Here you can find technical support, supplies and ordering information, project tips, and enhancement recommendations to help you get the most from your unit.

HP Customer Support

Software programs from other companies may be included with your HP PSC. If you experience problems with any of those programs, you will receive the best technical assistance by calling the experts at that company.

If you need to contact HP Customer Support, do the following before you call.

- 1 Make sure that:
 - a Your unit is plugged in and turned on.
 - b The specified print cartridges are installed correctly.
 - c The recommended paper is properly loaded in the input tray.
- 2 Reset your unit:
 - a Turn off the unit using the **On** button located on the unit's front panel.
 - b Unplug the power adapter connector from the back of the unit.
 - c Plug the power adapter connector back into the unit.
 - d Turn on the unit using the **On** button.
- 3 For more information, check the HP Web site at www.officejetsupport.com.
- 4 If you are still experiencing problems and need to speak with an HP Customer Support Representative:
 - Have your serial number and service ID ready. To display your service ID, on the front panel, press **Enter** and **Start Copy, Color** at the same time, until **SERV ID:** and the number appear in the front-panel display.
 - Print a test page.
 - Make a color copy.
 - Be prepared to describe your problem in detail.
- 5 Call HP Customer Support. Be near your unit when you call.

Call in the U.S. during warranty

Call (208) 323-2551 Monday through Friday from 6:00 A.M. to 10:00 P.M. Mountain Standard Time (MST) and Saturdays from 9:00 A.M. to 4:00 P.M. MST. This service is free during the warranty period; however, your standard long-distance phone charges still apply.

Call in the U.S. post-warranty

If your product is not under warranty, you can call (800) 999-1148. A per-call, out-of-warranty support fee will be charged to your credit card. You can also call (900) 555-1500 (\$2.50 per minute) from 6:00 A.M. to 10:00 P.M. MST and Saturdays from 9:00 A.M. to 4:00 P.M. MST. Charges begin only when you are connected with a support technician. (Prices and hours are subject to change without notice.)

Call elsewhere in the world

The numbers listed below are current as of the printing date of this guide. For a list of current international HP Support Service numbers, visit this address:

www.officejetsupport.com

For Korea, you can also visit this address:

www.hp.co.kr/

You can call the HP support center in the following countries. If your country is not listed, contact your local dealer or nearest HP Sales and Support Office to find out how to obtain services.

Support service is free during the warranty period; however, your standard long-distance phone charges will apply. In some cases, a flat fee per single incident will also apply.

Country	HP Technical Support	Country	HP Technical Support
U.S. during warranty	(208) 323-2551	Malaysia	03-2952566
U.S. post-warranty (per-call charge)	(800) 999-1148	Mexico	01-800-472-6684
U.S. post-warranty (per-minute charge)	(900) 555-1500	Netherlands	+31 (0) 20 606 8751
Argentina	541 14 778-8380	New Zealand	(09) 356 6640
Australia	+61 3 8877 8000	Norway	+47 22 11 6299
Austria	+43 (0) 810 00 6080	Oman	+971 4 883 8454
Bahrain (Dubai)	+971 4 883 8454	Palestine	+971 4 883 8454
Belgium (Dutch)	+32 (0) 02 626 8806	Philippines	632-867-3551
Belgium (French)	+32 (0) 02 626 8807	Poland	+48 22 519 06 00
Brazil	55 11 829 6612	Portugal	+351 21 3176333
Canada during warranty	(905) 206 4663	Qatar	+971 4 883 8454
Canada post-warranty (per-call charge)	1-877-621-4722	Russia, Moscow	+7 095 797 3520
Chile	800-360-999	Russia, St. Petersburg	+7 812 346 7997
Czech Republic	+42 (0) 2 6130 7310	Russia, Ukraine	+7 (380-44) 490-3520
Denmark	+45 39 29 4099	Saudi Arabia	+971 4 883 8454
Europe (English)	+44 (0) 171 512 5202	Singapore	2725300
Egypt	+971 4 883 8454	South Africa (RSA)	086 000 1030
Finland	+358 (0) 203 47 288	South Africa, Outside Republic	+27-11 258 9301
France	+33 (0) 01 43 62 34 34	Spain	+34 902 321 123
Germany	+49 (0) 180 52 58 143	Sweden	+46 (0)8 619 2170
Greece	+30 (0) 1 619 64 11	Switzerland (French)	+41 (0) 84 880 1111
Hong Kong	800-96-7729	Switzerland (German)	+41 (0) 84 880 1111
Hungary	+36 (0) 1 382 1111	Taiwan	886-2-2717-0055
India	91-11-682-6035	Thailand	662-661-4011
Indonesia	62-21-350-3408	Turkey	+90 212 221 69 69
Ireland	+353 (0) 662 5525	United Arab Emirates	+971 4 883 8454
Israel	+972 (0) 9 9524848	United Kingdom	+44 (0) 207 512 52 02
Italy	+39 (0) 02 264 10350	Venezuela	800-47-888

Country	HP Technical Support	Country	HP Technical Support
Jordan	+971 4 883 8454	Venezuela (Caracas)	207-8488
Korea	+82 (2) 3270 0700	Vietnam	84-8-823-4530
Kuwait	+971 4 883 8454	Yemen	+971 4 883 8454
Lebanon	+971 4 883 8454		

HP Distribution Center

To order HP PSC software, a copy of the printed Basic Guide, a Setup Poster, or other customer-replaceable parts, call the appropriate number.

- In the U.S. or Canada, dial (661) 257-5565.
- In Europe, dial +49 180 5 290220 (Germany) or +44 870 606 9081 (U.K.).

To order HP PSC software, call the phone number for your country.

Region	Number for ordering
U.S.	(661) 257-5565
Argentina	541 14 778-8380
Asia	65 740 4477
Australia/New Zealand	61 3 8877 8000
Brazil	55-11-829-6612
Chile	800 360999
Europe	+49 180 5 290220
Europe	+44 870 606 9081
South Africa	+27 (0)11 8061030
Mexico	01 800 4726684
Venezuela	800 47 888
Venezuela (Caracas)	207 8488

Technical information

For comprehensive information, see the fully searchable Onscreen Guide. To access the guide, go to the Director, click Tools, and choose View Onscreen Guide.

Power specifications

- Power consumption: 50W maximum
- Source (Input) Voltage: 100 to 240 VAC*, grounded
- Input Frequency: 50 to 60 Hz
- Current: 1A maximum

* Figures are based on using the AC adapter that came with your unit (HP part number 0950-3807).

Order print cartridges

Print Cartridges	HP Reorder Number
HP black print cartridges	#15, 25-mil black print cartridge
HP color print cartridges	#78, 19-mil starter color print cartridge

If you have Internet access, you can get more information from the HP Web site at:

www.hp.com/go/all-in-one

Regulatory notices

The following sections are statements from various regulatory agencies.

FCC statement

The United States Federal Communications Commission (in 47 CFR 15.105) has specified that the following notice be brought to the attention of users of this product.

Declaration of Conformity: This equipment has been tested and found to comply with the limits for a Class B digital device, pursuant to part 15 of the FCC Rules. Operation is subject to the following two conditions: (1) this device may not cause harmful interference, and (2) this device must accept any interference received, including interference that may cause undesired operation. Class B limits are designed to provide reasonable protection against harmful interference in a residential installation. This equipment generates, uses, and can radiate radio frequency energy, and, if not installed and used in accordance with the instructions, may cause harmful interference to radio communications. However, there is not guarantee that interference will not occur in a particular installation. If this equipment does cause harmful interference to radio or television reception, which can be determined by turning the equipment off and on, the user is encouraged to try to correct the interference by one or more of the following measures:

- Reorient the receiving antenna.
- Increase the separate between the equipment and the receiver.
- Connect the equipment into an outlet on a circuit different from that to which the receiver is connected.
- Consult the dealer or an experienced radio/TV technician for help.

Product Regulations Manager, Hewlett-Packard Company, San Diego, 858-655-4100.

The user may find the following booklet prepared by the Federal Communications Commission helpful: *How to Identify and Resolve Radio-TV Interference Problems*. This booklet is available from the U.S. Government Printing Office, Washington DC, 20402. Stock No. 004-000-00345-4.

CAUTION

Pursuant to Part 15.21 of the FCC Rules, any changes or modifications to this equipment not expressly approved by the Hewlett-Packard Company, may cause harmful interference and void the FCC authorization to operate this equipment.

DOC statement / Déclaration de conformité (Canada)

Le present appareil numerique n'emet pas de bruits radioelectriques depassant les limits applicables aux appareils numeriques de la class B prescrites dans le Reglement sur le brouillage radioelectrique edicte par le ministere des Communications du Canada.

This digital apparatus does not exceed the Class B limits for radio noise emissions from digital apparatus set out in the Radio Interference Regulations of the Canadian Department of Communications.

Geräuschemission

LpA < 70 dB
am Arbeitsplatz
im Normalbetrieb
nach DIN 45635 T. 19

VCCI-2 (Japan)

この装置は、情報処理装置等電波障害自主規制協議会（VCCI）の基準に基づくクラスB情報技術装置です。この装置は、家庭環境で使用することを目的としていますが、この装置がラジオやテレビジョン受信機に近接して使用されると受信障害を引き起こすことがあります。
取り扱い説明書に従って正しい取り扱いをして下さい。

Declaration of Conformity

According to ISO/IEC Guide 22 and EN 45014

Manufacturer's Name and Address:

Hewlett-Packard Company, 16399 West Bernardo Drive, San Diego, CA 92127-1899, USA

declares that the product HP All-in-One PSC 700 - Series (C8424A)

 Product Name: PSC 720, PSC 750, PSC 750xi

 Model Number(s): C8425A, C8426A, C8427A

 Product Options: None

 Note: See Declaration of Similarity for product descriptions.

conforms to the following Product Specifications:

Safety: IEC60950: 1991 +A1, A2, A3, and A4
 EN60950:1992 +A1, A2, A3, A4, and A11
 IEC 60825-1:1993 +A1 / EN 60825-1:1994 +A11 Class 1 (Laser/LED)
 UL1950/CSA22.2 No. 950, 3rd Edition: 1995

EMC: CISPR 22: 1997 / EN 55022: 1998 Class B
 CISPR 24: 1997 / EN 55024: 1998
 IEC 61000-3-2: 1995 / EN 61000-3-2: 1995
 IEC 61000-3-3: 1994 / EN 61000-3-3: 1995

Supplementary Information:

The Product herewith complies with the requirements of the Low Voltage Directive 73/23/EC and EMC Directive 89/336/EC and carries the CE-marking accordingly.

European Contact: Your local Hewlett-Packard Sales and Service Office or Hewlett-Packard GmbH.
 Department HQ-TRE, Herrenberger Strasse 130, D-71034 Böblingen (FAX + 49-7031-14-3143)

Index

A

add programs 33
 annotate 18

B

banner paper - tips on loading 12
 buttons
 front-panel description 1

C

cancel a copy job 32
 cartridges - order 39
 change the language 33
 Clone 31
 computer
 copy from 28
 scan from 24
 copy
 clone an original 31
 darken 30
 enlarge 29
 from computer 28
 from front panel 28
 from glass 15
 introduction 27
 lighten 30
 make a poster 32
 make copies fit on page 31
 reduce 29
 shift side margins 30
 stop 32
 customer support 35
 customize Director 4

D

darken a copy 30
 Director
 copy from 28
 customize 4
 introduction 3
 scan from 24

E

enlarge a copy 29
 envelopes - tips on loading 13

F

Fit to Page 31
 front panel 1
 button descriptions 1

copy from 28
 scan from 24

G

glass - place original on 15

H

hardware - help 7
 help - access 7
 hp Customer Support 35
 hp Distribution Center 37
 hp papers - tips on loading 11

I

input tray - load paper 9
 introduction
 copy 27
 Director 3
 print 21
 scan 23

L

labels 12
 language 33
 legal-size paper - tips on loading 12
 lighten - copy 30
 links
 create 18
 using 19
 load
 original on glass 15

M

margins
 shift for copy 30

O

order print cartridges 39
 overview
 copy 27
 print 21
 scan 23

P

paper
 avoid jam 16
 load 9
 paper type - set 14
 phone numbers - support services 35
 postcards 12

- poster 32
 - make using copy 32
- print
 - continuous (banner) paper - tips on loading 12
 - envelopes - tips on loading 13
 - introduction 21
 - start 21
- print cartridges - order 39
- programs
 - add and remove 33
 - print from within 21

R

- reduce a copy 29
- remove programs 33
- review the toolbox 5

S

- scan
 - annotate 18
 - from computer 24
 - from front panel 24
 - from glass 15
 - introduction 23
- set the language 33
- settings
 - darken a copy 30
 - enlarge a copy 29
 - lighten a copy 30
 - reduce a copy 29
- setup
 - additional information 33
 - help 7
- software
 - add and remove 33
 - copy from 28
 - help 7
 - introduction 3
- stop a copy job 32
- support services 35

T

- telephone numbers 35
- toolbox - review 5
- tray
 - empty output 16
 - load input 9

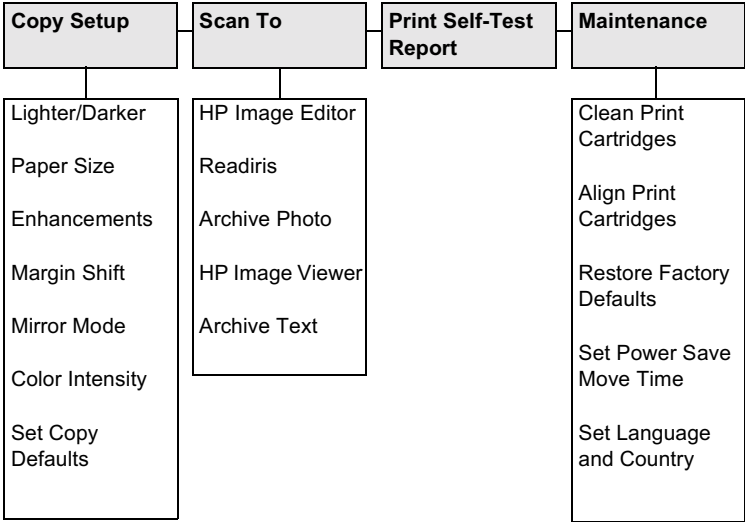
U

- USB cable, installation
 - USB cable 34

W

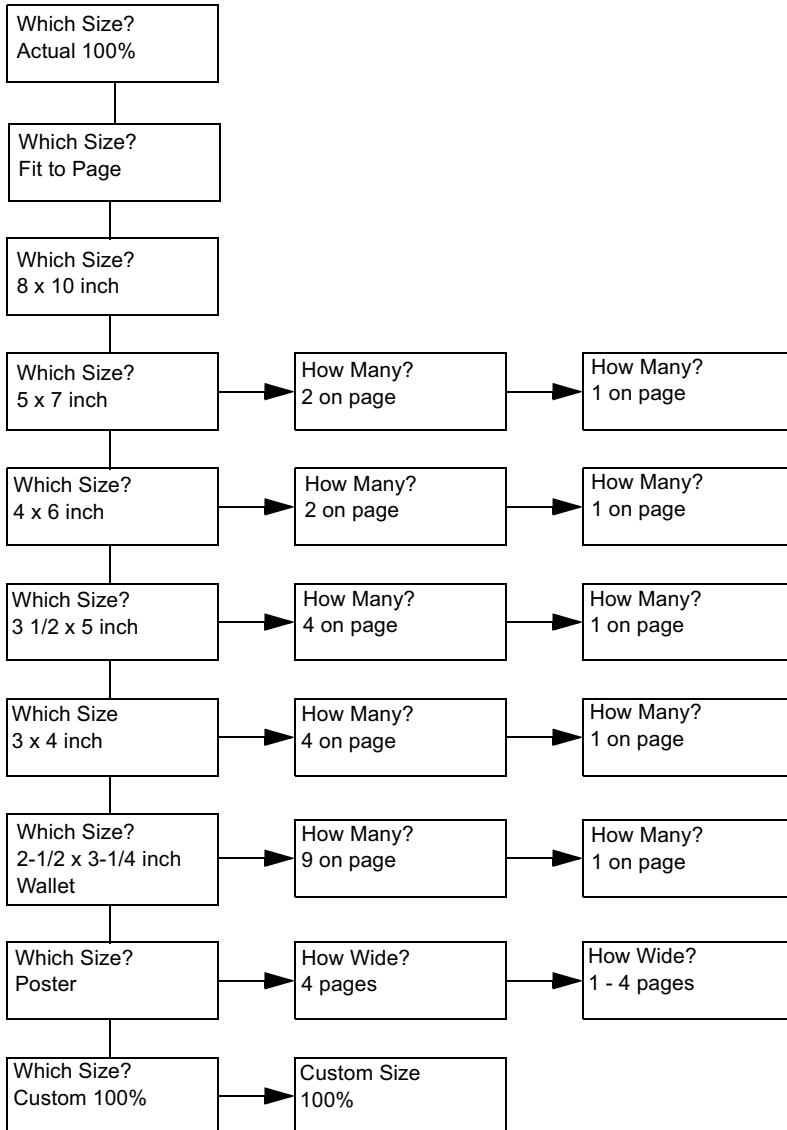
- warranty 35
- workplace 17

HP PSC Menu



Use **Menu** to display the menu options.
Use **◀** and **▶** to move to the setting you want.
Press **ENTER** to select the displayed setting.

Creative Copy Menu



Press the **Creative Copying** button to display and scroll through the menu options.
Press **Enter** to select the displayed setting.
Use **◀** and **▶** to select the number of images per page, number of poster pages and the Custom Size percentage.

Visit the hp all-in-one information center.

It's everything you need to get the most value from your hp psc.

- Technical Support
- Supplies and Ordering Information
- Project Tips
- Ways to Enhance Your Product

www.hp.com/go/all-in-one

© 2001 Hewlett-Packard Company

Printed in the U.S.A., Mexico, Germany, or Singapore.



C8424-90154