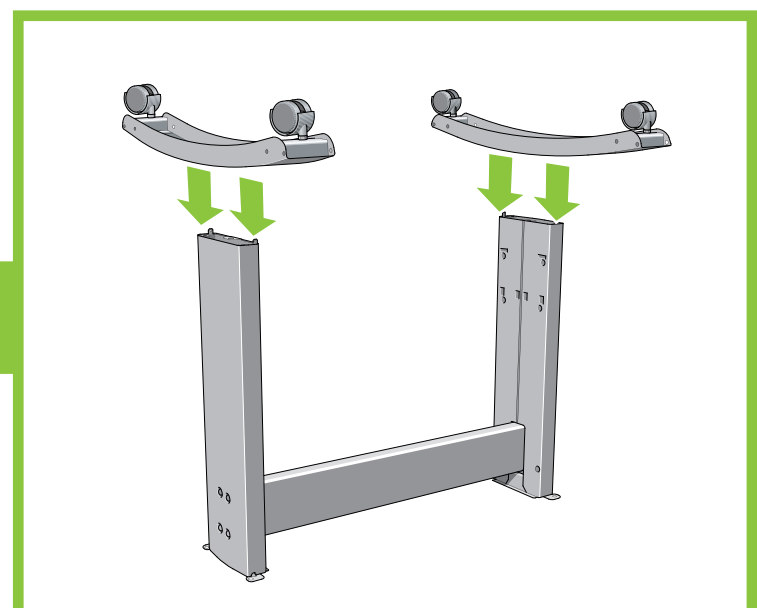
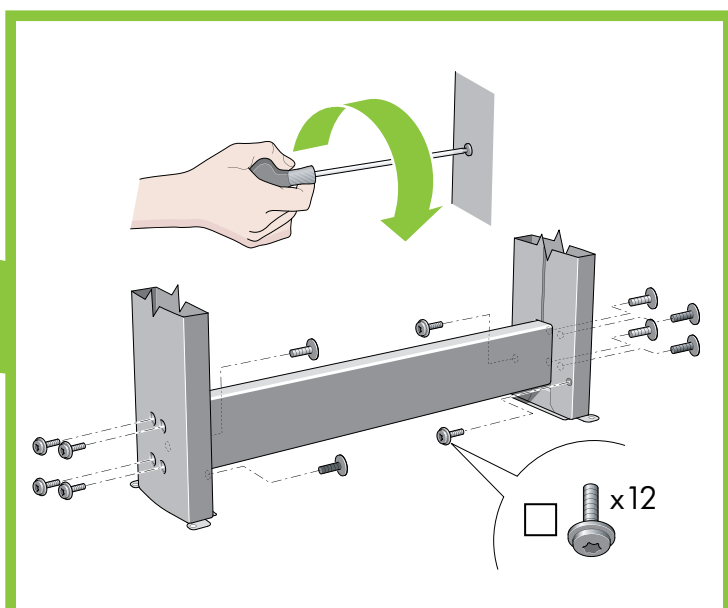
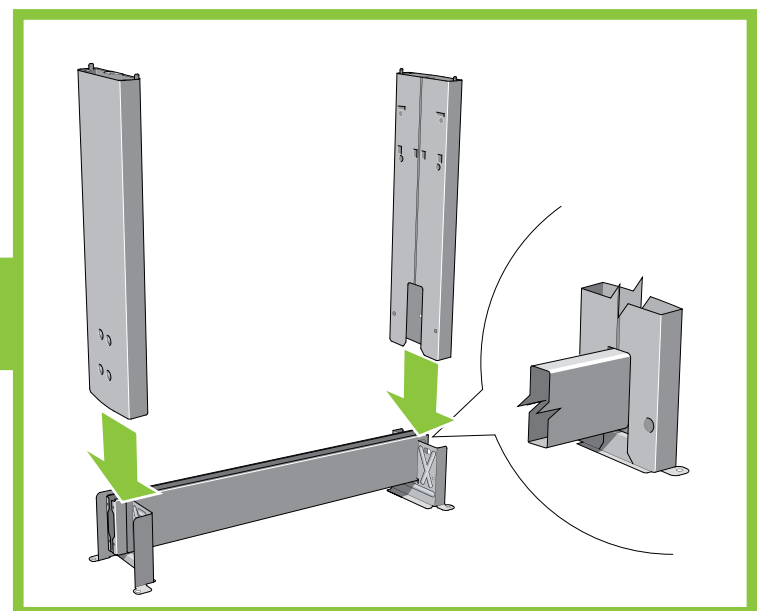
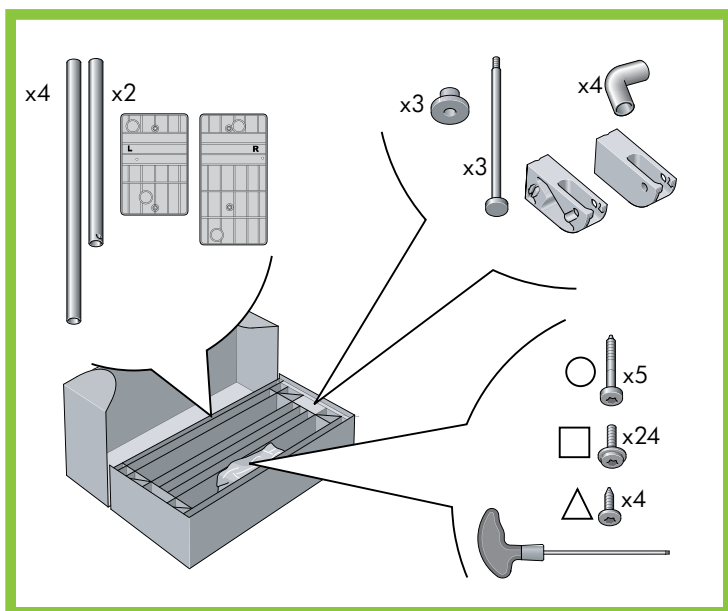


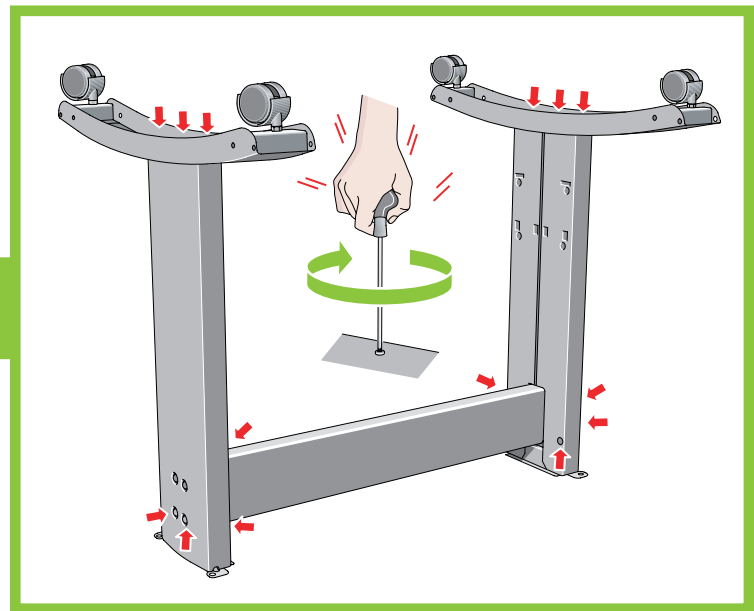
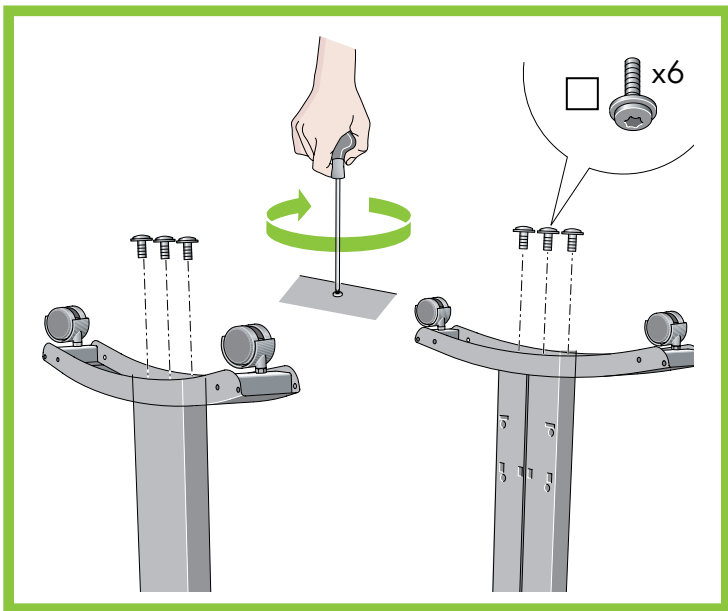
# HP Designjet 100/500/800 series



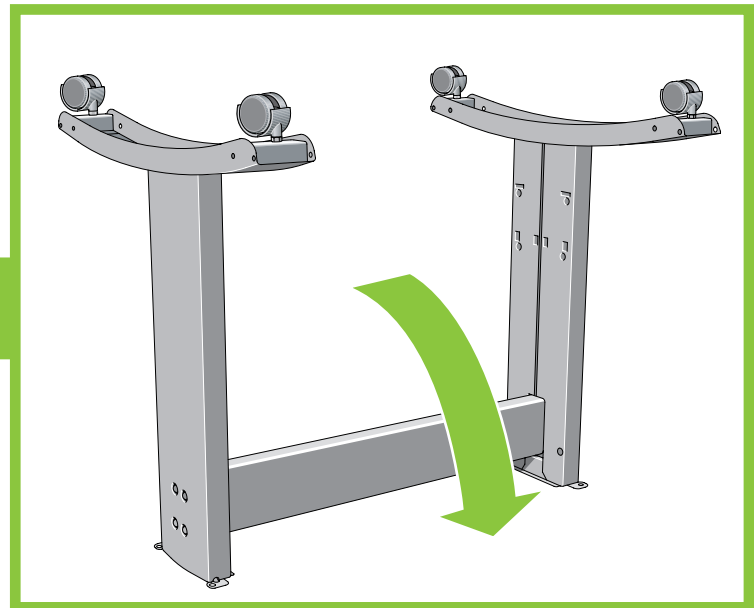
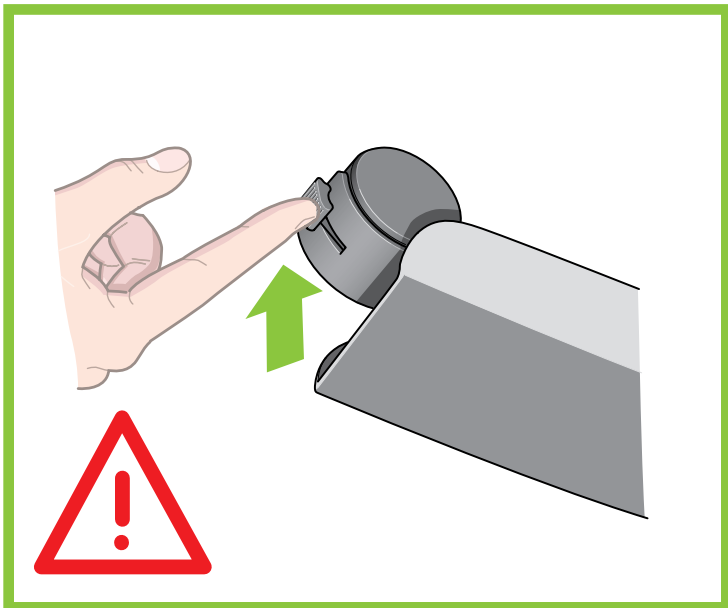
1



2



3



HP Designjet 500/800 series

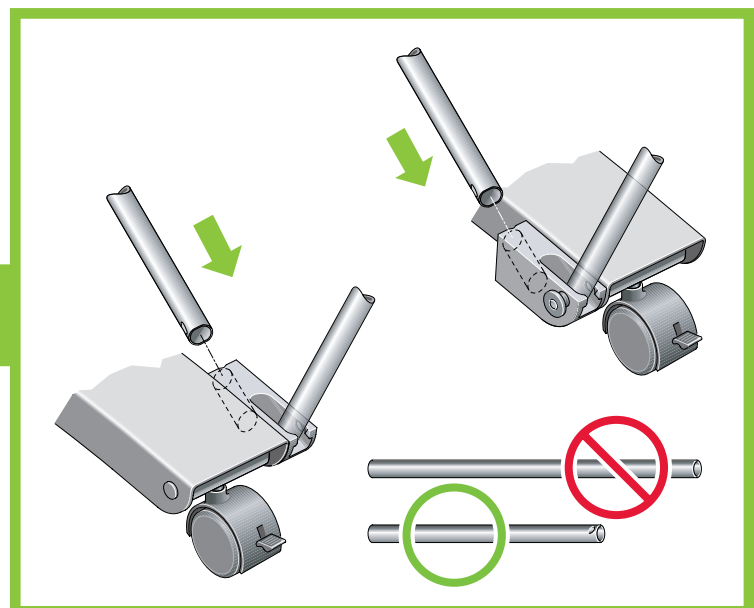
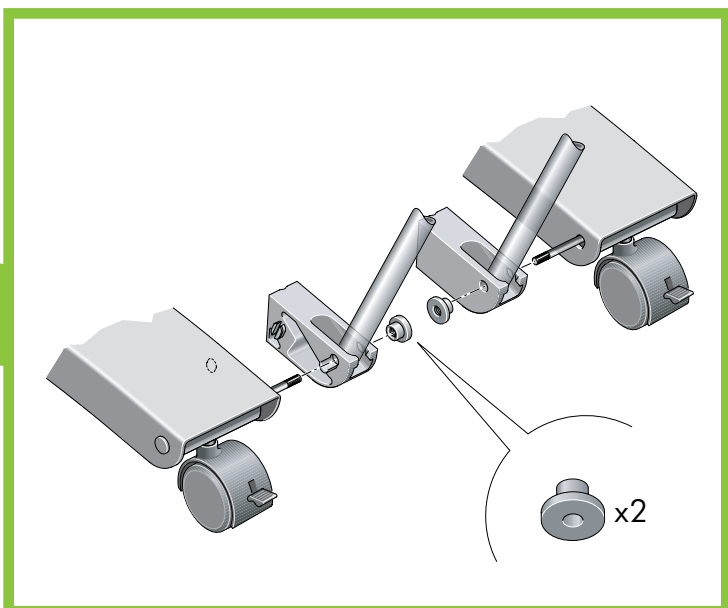
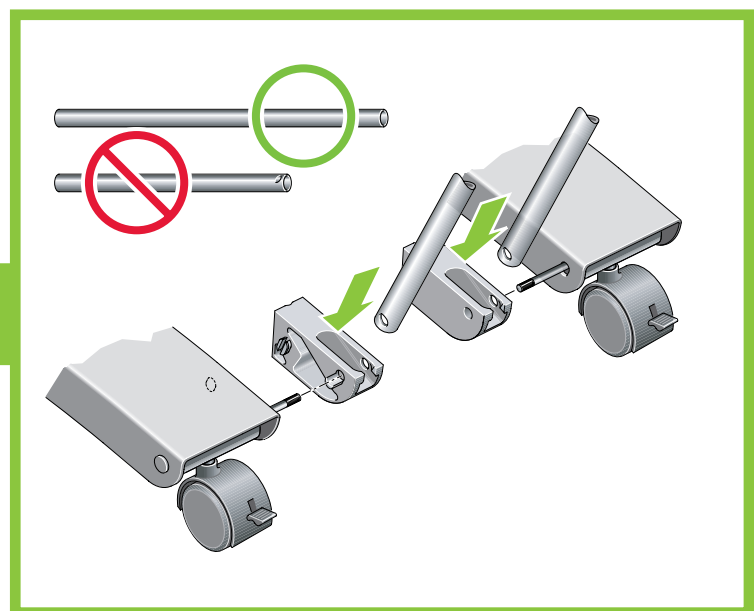
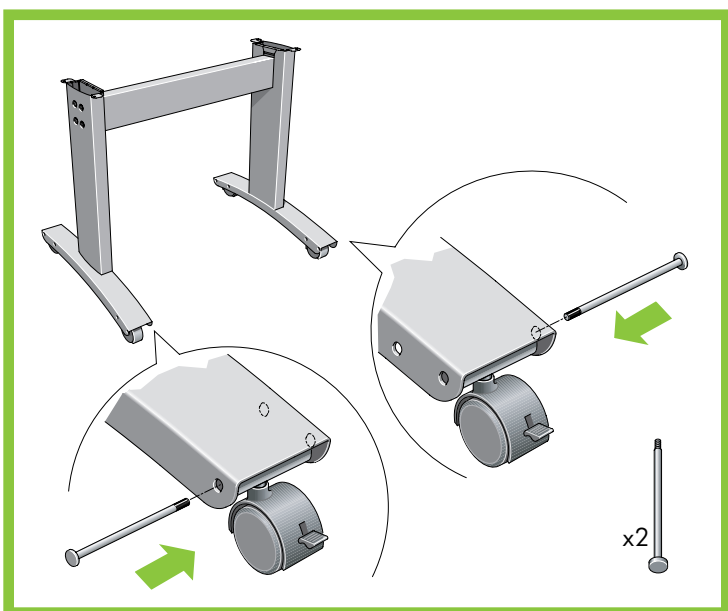
4

HP Designjet 100 series

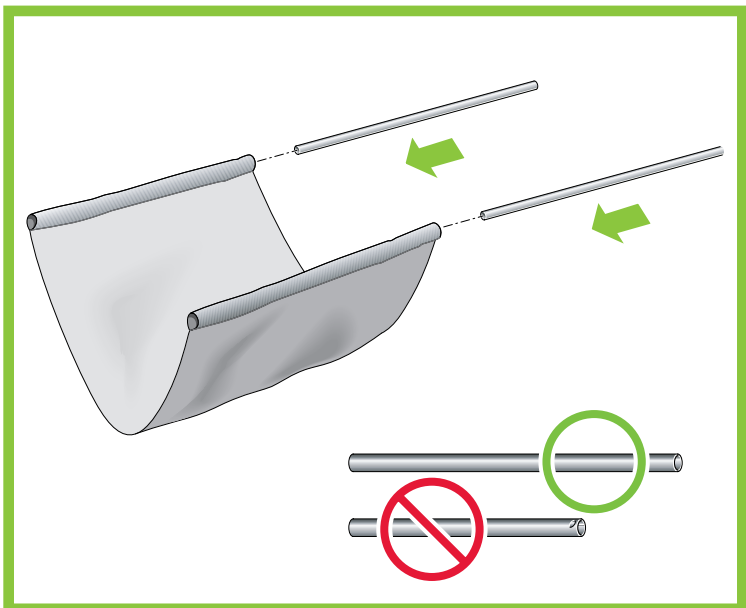
8

### HP Designjet 500/800 series

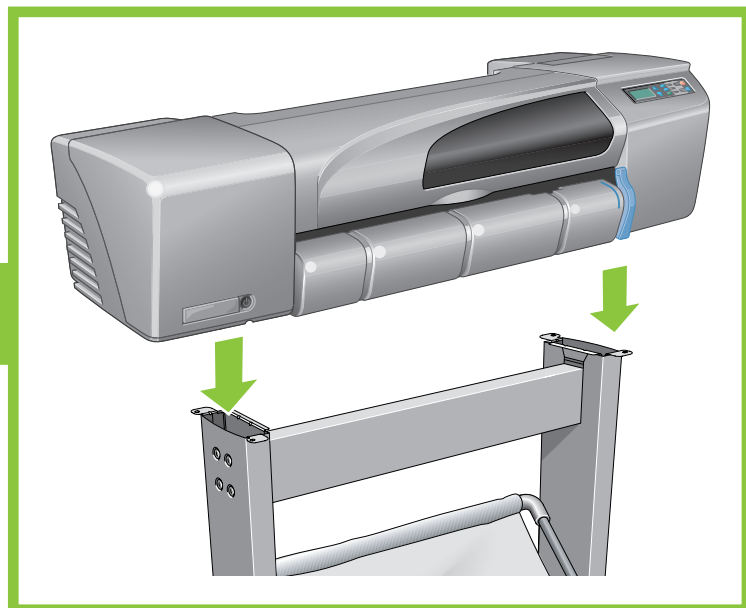
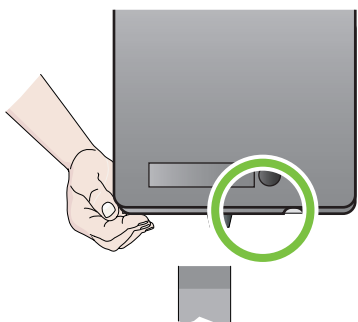
4



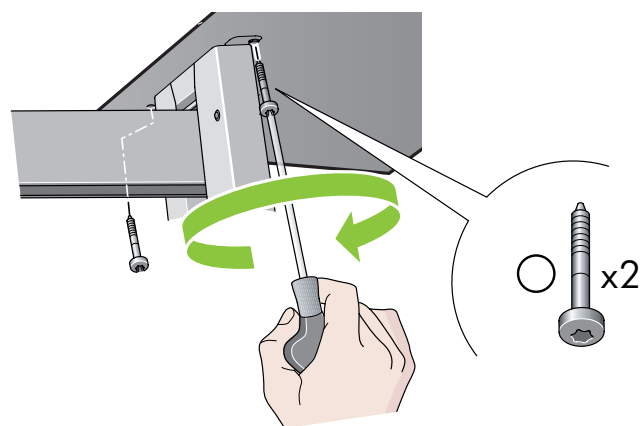
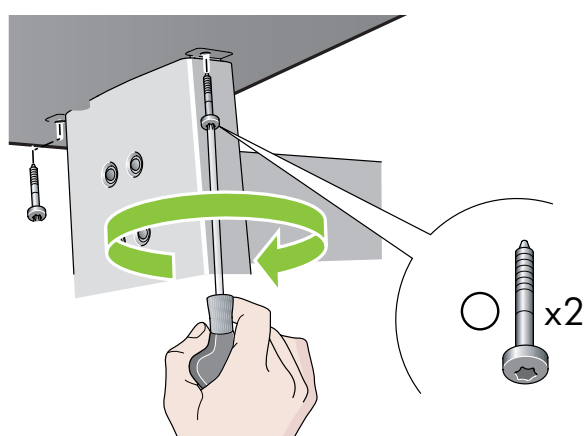
5



6

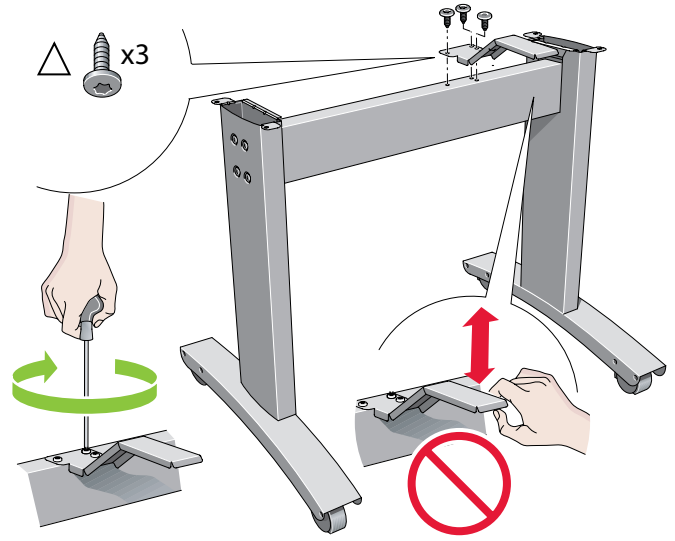


7



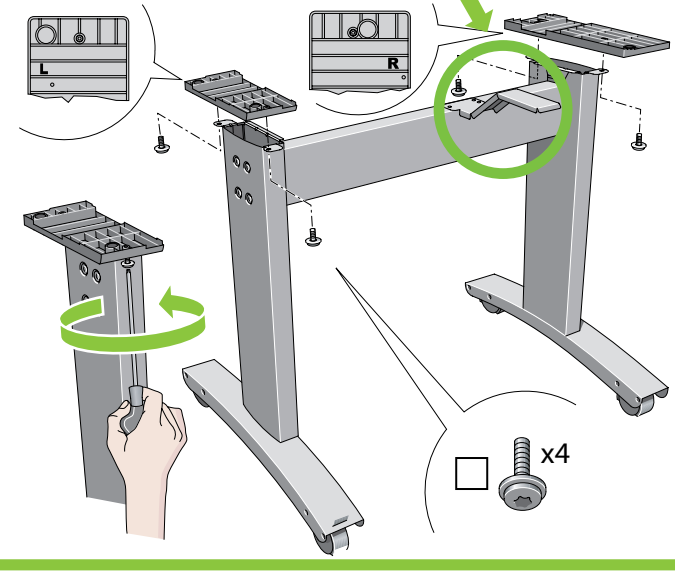
HP Designjet 100 series

8

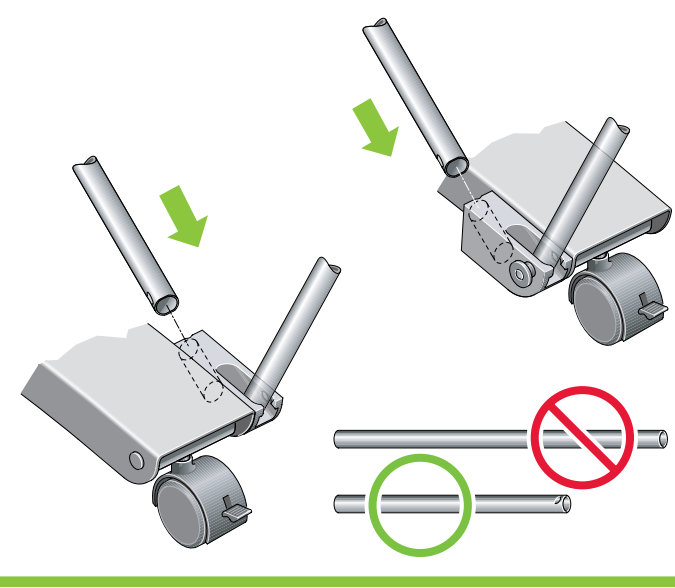
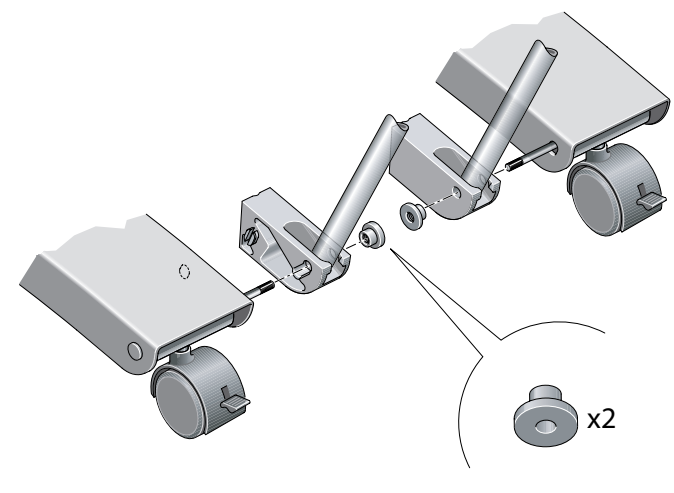
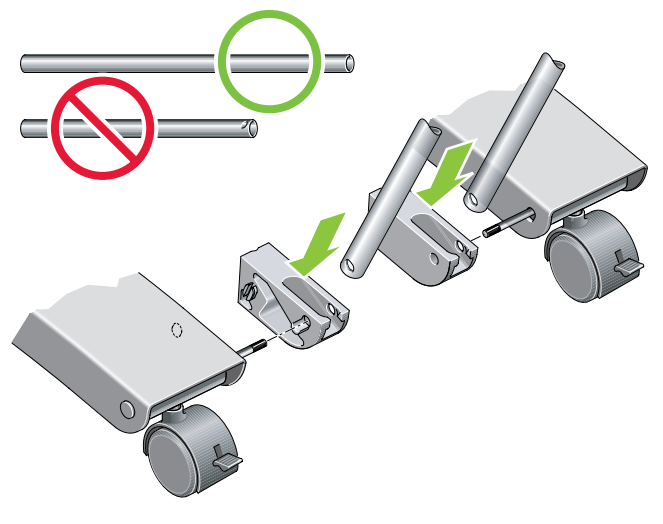
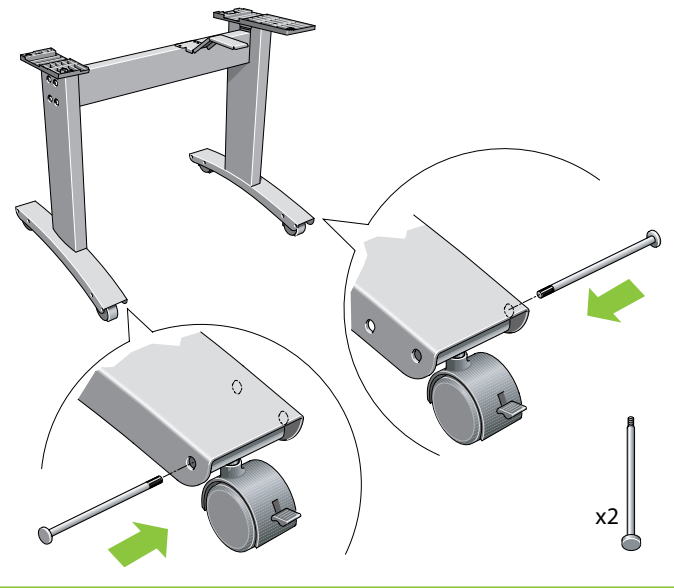


HP Designjet 100 series Tray only

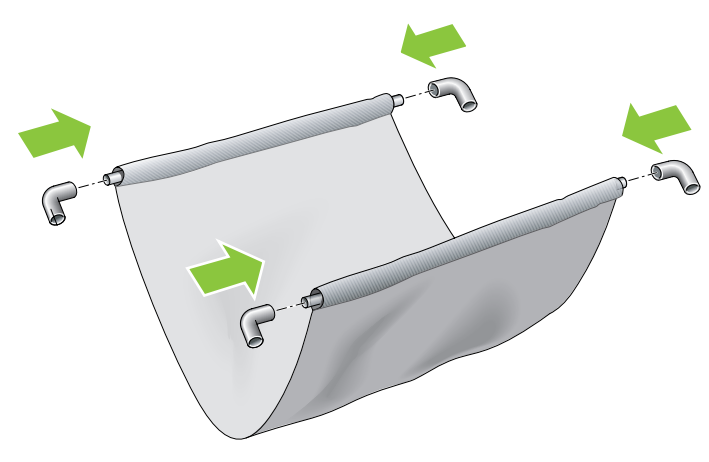
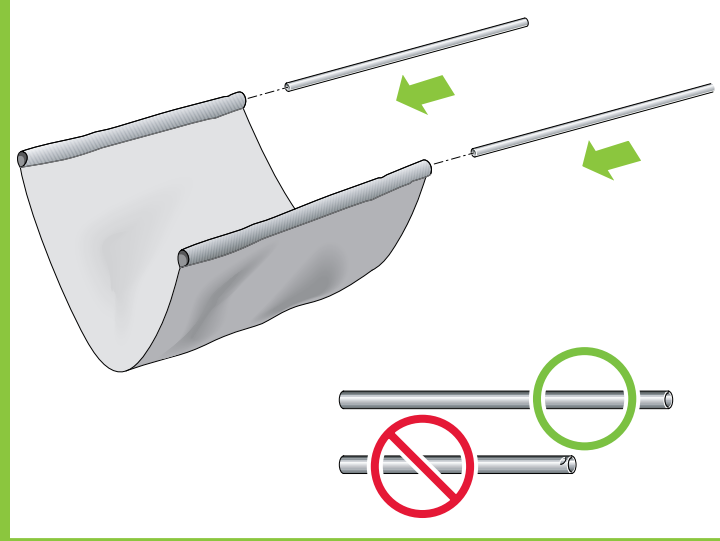
HP Designjet 100 series Tray only

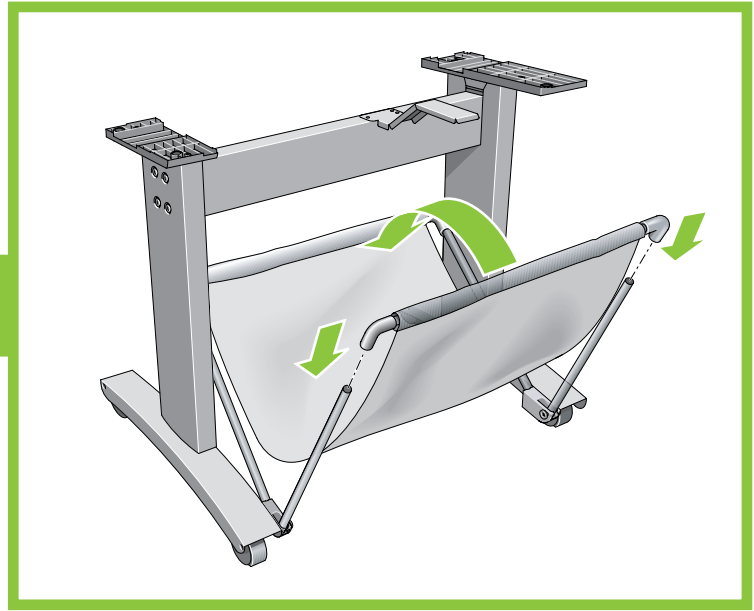
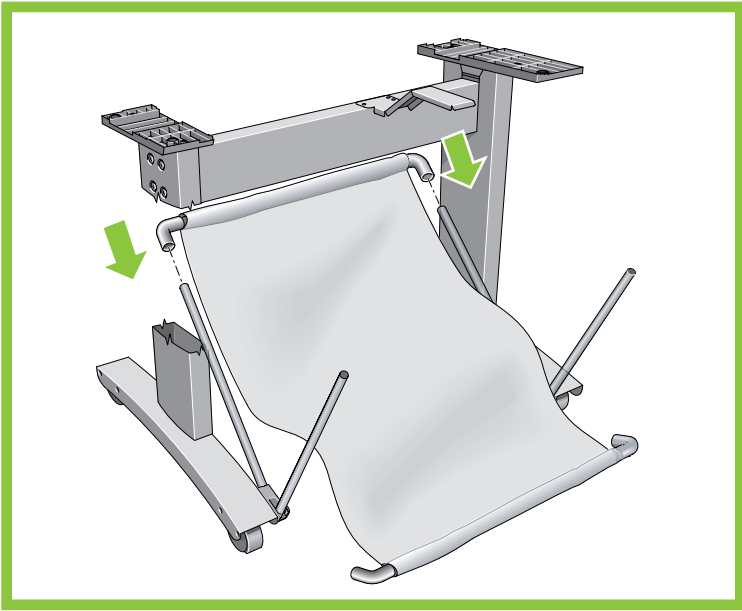


9

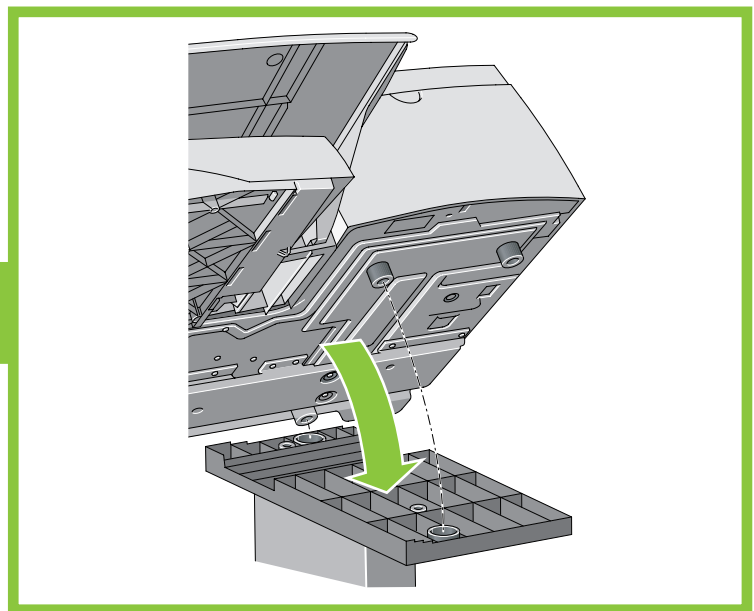
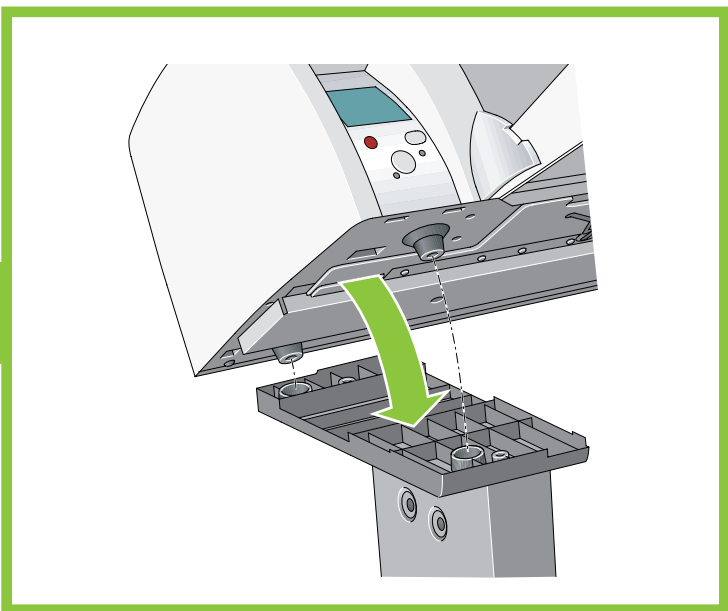
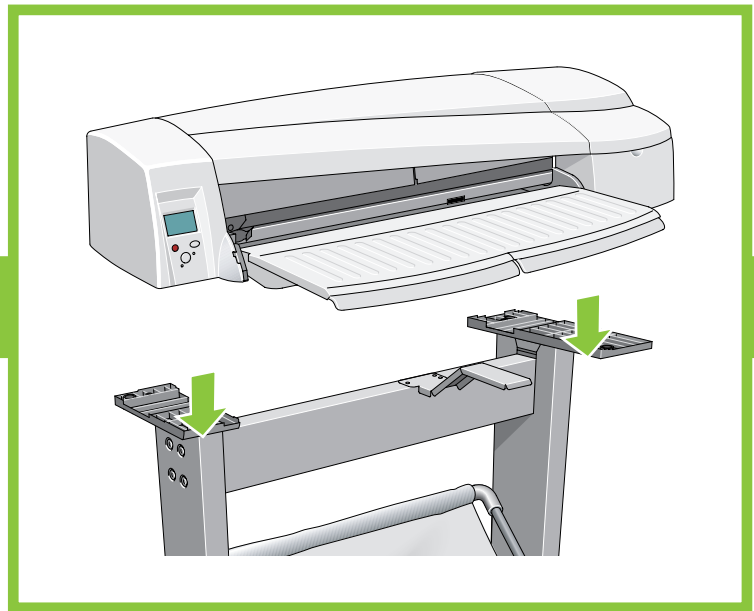
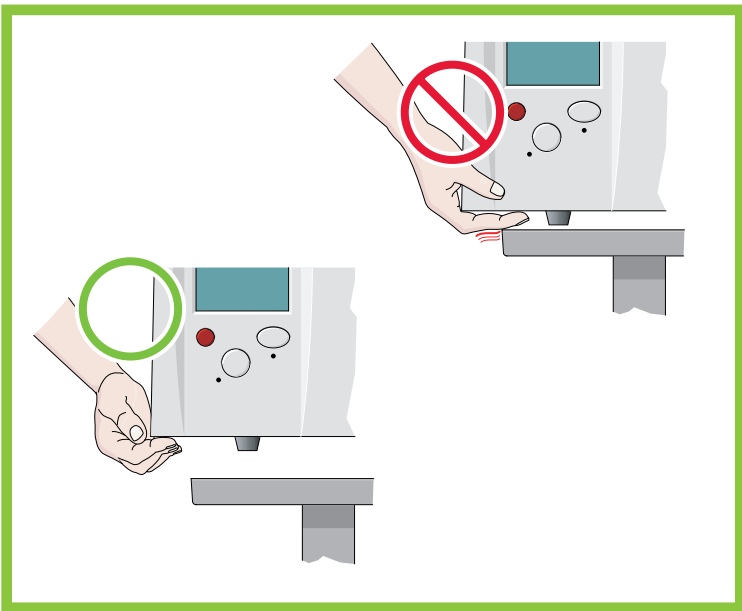


10

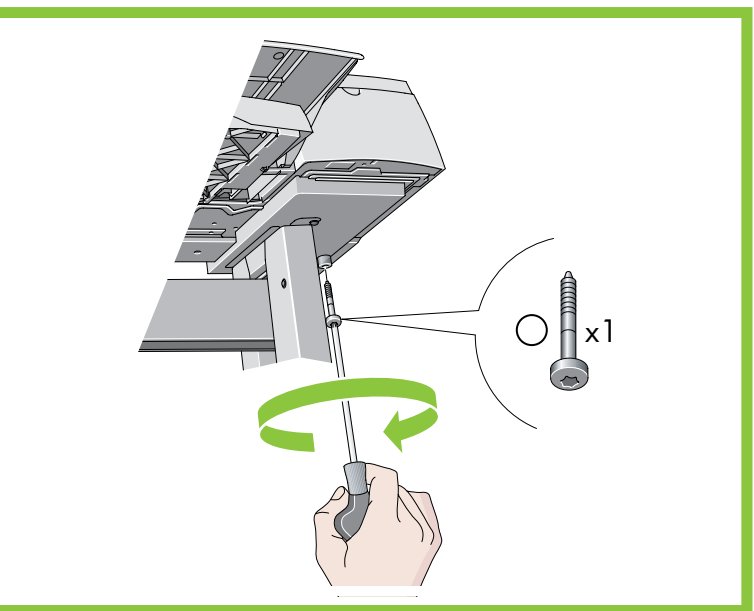
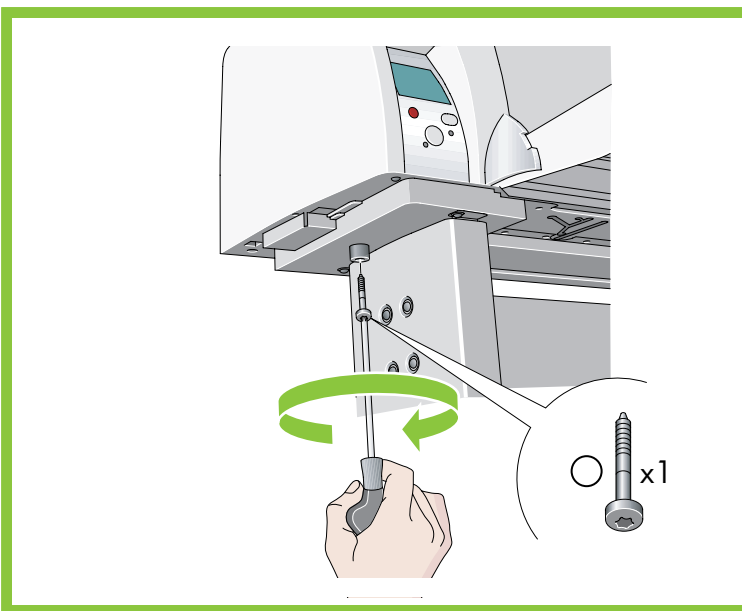




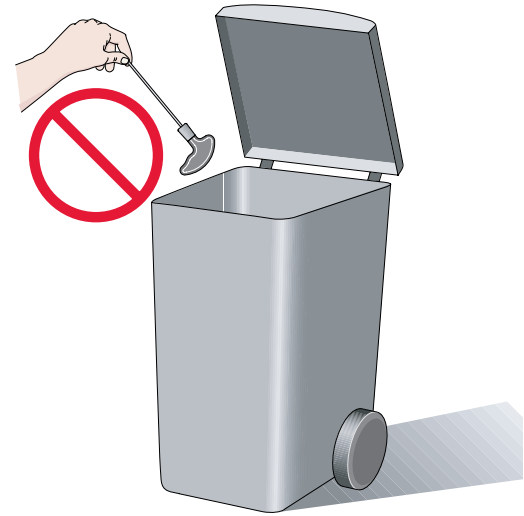
11



12

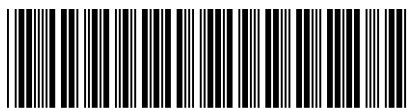


**Keep the screwdriver for future use**  
**Conservez le tournevis pour une utilisation ultérieure**  
**Conservare il cacciavite per uso futuro**  
**Behalten Sie den Schraubenzieher für den Fall, dass Sie ihn in Zukunft benötigen**  
**Guarde el destornillador para usarlo en otra ocasión**  
**Guarde a chave de fenda para uso futuro**  
後で使用するときのためにドライバを保管しておきます。  
나중에 사용하기 위해 드라이버를 보관해 두십시오.  
保存好螺丝刀以备将来使用  
請收好螺絲起子以備將來之用



© 2010 Hewlett-Packard Development Company L.P.  
Printed in China.

[www.hp.com](http://www.hp.com)



Q1246-90003

