

htc

User guide

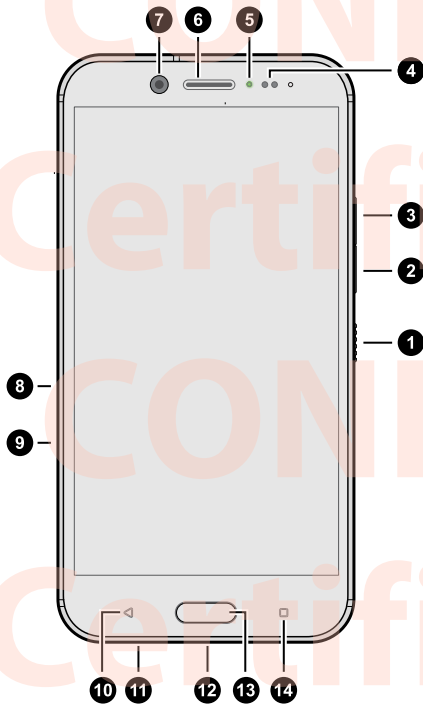


HTC Phone

Unboxing and setup

HTC phone overview

Front panel



1. POWER
2. VOLUME DOWN
3. VOLUME UP
4. Proximity sensor
5. Notification LED
6. Earpiece
7. Front camera
8. microSD™ card slot
9. nano SIM card slot
10. BACK
11. Speakers
12. USB Type-C™ connector
13. HOME / Fingerprint scanner
14. RECENT APPS



You need a 4G/LTE™ plan to use your operator's 4G/LTE network for voice calls and data services. Check with your operator for details.

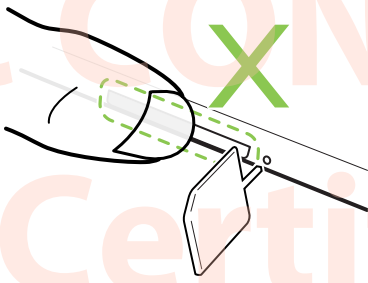


If you want to use a case or screen protector, don't cover and block the proximity sensor. Purchase a case or screen protector designed for HTC phone.

Slots with card trays

There are trays inside the nano SIM and microSD slots that are used for inserting your cards.

When inserting the eject tool into the tray eject holes to remove the card trays, make sure not to press on the trays to avoid damaging the eject mechanism inside the slots.

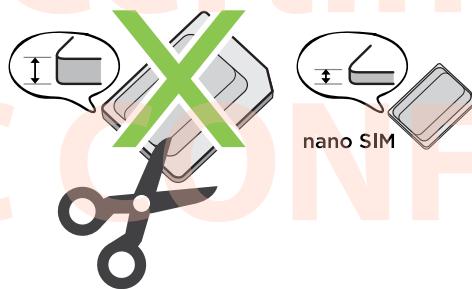


Also, if you want to use a protective case, make sure to buy a case that's designed for HTC phone and that doesn't block the trays.

nano SIM card

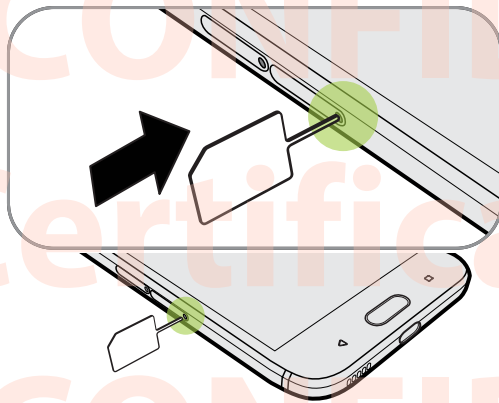
HTC phone uses a nano SIM card.

Use a standard nano SIM card only. Inserting a modified card that is thicker than the standard nano SIM card may cause the card to not fit properly or damage the card slot.



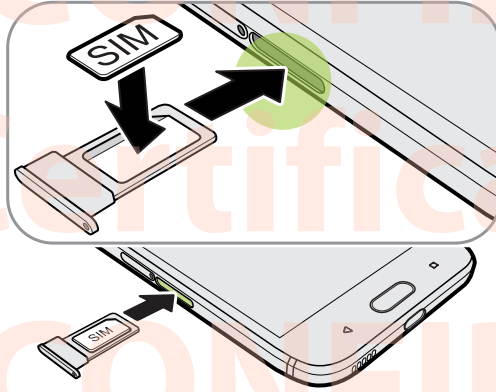
Inserting a nano SIM card

1. Hold the phone face up.
2. Insert the tip of the tray eject tool (or a small bent paperclip) into the tray eject hole next to the nano SIM card slot.



3. Push the tip all the way into the hole until the tray ejects, and then pull the tray out.

4. Place the nano SIM card (contacts facing down) into the tray.



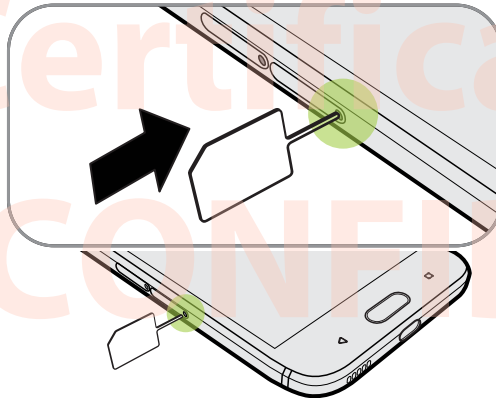
5. Insert the card tray back into the slot.
6. Press on the cover that's attached to the tray. Make sure the cover doesn't protrude from the side to ensure that it's closed evenly and firmly.

Removing a nano SIM card



Make sure to switch off HTC phone before removing the card.

1. Hold the phone face up.
2. Insert the tip of the tray eject tool that came with your phone—or a small bent paperclip—into the nano SIM tray eject hole.



3. Push the tip all the way into the hole until the card tray ejects.
4. Pull the card tray out, and remove the nano SIM card.
5. Make sure that you insert the empty card tray back into the slot.

Storage card

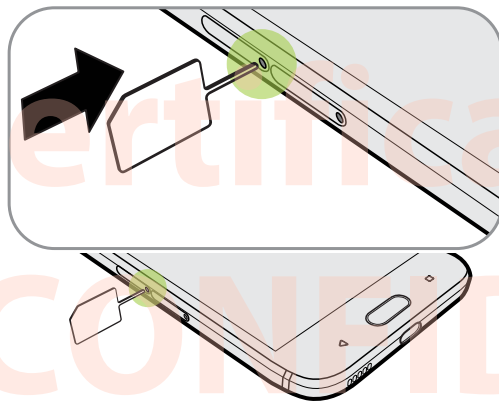
Use a storage card to store your photos, videos, and music. When you need to free up phone storage space, you can also move certain apps to the storage card, if the apps support this feature.



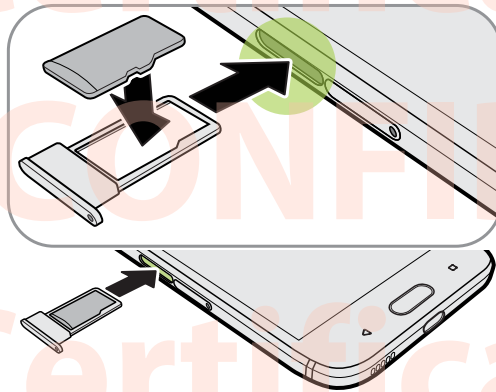
The storage card is optional and sold separately.

Inserting the microSD card

1. Hold the phone face up.
2. Insert the tip of the tray eject tool that came with your phone—or a small bent paperclip—into the microSD tray eject hole.



3. Push the tip all the way into the hole until the microSD card tray ejects.
4. Pull the microSD card tray out, and place the microSD card—contacts facing down—into the tray.



5. Insert the microSD card tray back into the slot.
6. Press on the cover that's attached to the tray. Make sure the cover doesn't protrude from the side to ensure that it's closed evenly and firmly.

If it's the first time you insert a microSD card, you'll be prompted to set it up.

Unmounting the storage card

When you need to remove the storage card while HTC phone is on, unmount the storage card first to prevent corrupting or damaging the files in the storage card.



If your storage card is used as internal storage and there are apps that were moved to the card, you will not be able to open these apps after unmounting the card.

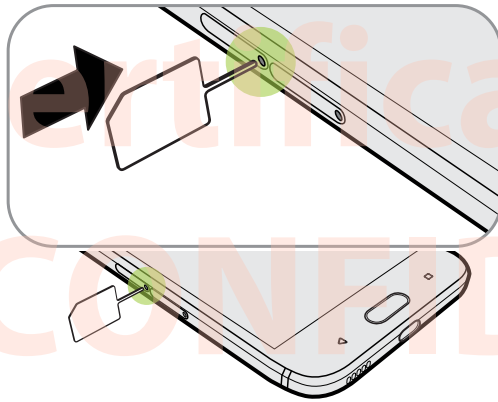
1. From the Home screen, tap **⋮** > **Settings** > **Storage**.
2. Do one of the following:
 - If your storage card appears under Removable storage, tap **⚙** > **Eject** next to the card name.
 - If your storage card appears under Internal storage, tap the card name, and then tap **Eject**.

Removing the microSD card



Make sure to unmount your microSD card before removing it. See [Unmounting the storage card](#) on page 21.

1. Hold the phone face up.
2. Insert the tip of the tray eject tool that came with your phone—or a small bent paperclip—into the microSD tray eject hole.



3. Push the tip all the way into the hole until the microSD card tray ejects.
4. Pull the microSD card tray out, and remove the microSD card.

After removing the microSD card, make sure that you insert the empty microSD card tray back into the slot.

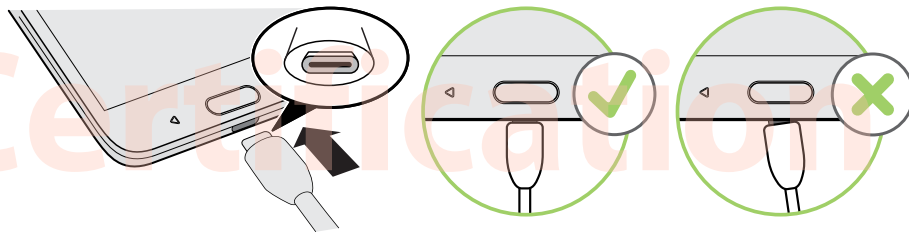
Charging the battery

Before you turn on and start using HTC phone, it is recommended that you charge the battery.



- If the battery has been discharged for several days, you may need to charge HTC phone for several minutes before powering it on.
- Use only the adapter and the USB Type-C cable that came with HTC phone to charge the battery. When the battery power is too low, make sure to use the power adapter to charge, not the USB cable connection with your computer.

1. Insert the small end of the USB cable into the USB connector.



2. Insert the other end of the USB cable into the power adapter.
3. Plug in the power adapter to an electrical outlet to start charging the battery.



- As a safety precaution, the battery may stop charging to avoid overheating.
- Avoid charging the battery in hot environments.
- When you're using the web browser and charging the battery, HTC phone may become warmer. This is normal.
- To conserve energy, unplug the power adapter from the electrical outlet after you finish charging.

Switching the power on or off

Switching the power on

Press the POWER button until HTC phone vibrates.



When you turn on HTC phone for the first time, you'll need to set it up.

Switching the power off

1. If the display is off, press the POWER button to turn it back on.
2. Press and hold the POWER button for a few seconds.
3. Tap **Power off** on the options menu.

Setting up HTC phone for the first time

When you switch on HTC phone for the first time—or after you've done a factory reset—you'll be asked to set it up.



You can enable TalkBack to navigate by voice feedback before selecting the language. Press and hold two fingers on the screen until you hear a message saying that accessibility mode is enabled.

Walk through the on-device setup to choose your Internet connection, sign in to your Google Account, set up device protection for HTC phone, and more.

Use Android Backup Service if you've used it to back up your old phone before. On the screen that asks you which device to restore from, tap the name of your old phone model. Tap **✓** to choose the type of items you want to restore, and then tap **Restore** to proceed.

Otherwise, tap **Don't restore**.



Some features that need to connect to the Internet such as location-based services and auto-sync of your online accounts may incur extra data fees. To avoid incurring data fees, disable these features under Settings. For more information on location services, see [Turning location services on or off](#) on page 155.

Ways of transferring content

Transfer content to your HTC phone, such as contacts, messages, music, photos, videos, and some settings depending on the method you choose.

Transferring content from an Android phone



- On your old Android phone, download the HTC Transfer Tool and use it to transfer your content to your new phone. See [Transferring content from an Android phone](#) on page 102 for more details.
- Use Bluetooth if you only need to transfer contacts from a phone that has Android version 2.1 (or earlier version).
- Download HTC Sync Manager on your computer to transfer your content from an old HTC phone.

Transferring content from an iPhone

Back up and restore iPhone content through iCloud, HTC Sync Manager, or Bluetooth. For more details, see [Ways of transferring content from an iPhone](#) on page 103.

Adding your social networks, email accounts, and more



You can sync contacts, calendars, and other information from your social networks, email accounts, and online services on HTC phone. Depending on the account type, signing in to your online accounts lets you sync updates between HTC phone and the Web.

1. From the Home screen, tap  > **Settings** > **Accounts & sync**.
2. Tap .
3. Tap the account type you want to add.
4. Follow the onscreen instructions to enter your account information.



- In **Settings** > **Accounts & sync**, tap the Auto sync **On/Off** switch to turn automatic sync of all your accounts.
- You can add several Google Accounts.

Syncing your accounts



1. From the Home screen, tap  > **Settings** > **Accounts & sync**.
2. Tap the Auto sync **On/Off** switch to turn automatic sync of all your accounts on or off.
3. To manually sync individual accounts, tap an account type, and then tap  > **Sync now** on the Account settings screen.



On the Account settings screen, you can also change the sync settings for an account.

Removing an account

Remove accounts from HTC phone if you no longer use them. Removing an account does not remove accounts and information from the online service itself.

1. From the Home screen, tap  > **Settings** > **Accounts & sync**.
2. Tap an account type.
If you've signed into multiple accounts under an account type, tap the account to remove.
3. Tap  > **Remove account**.



Some personal data may be retained by the third-party app after you have removed the account from HTC phone.

Fingerprint scanner

You can quickly wake up and unlock the HTC phone using your fingerprint. You can add up to 5 fingerprints.


When setting up and using the fingerprint scanner, follow these tips:

- Make sure your finger and the fingerprint scanner are dry and clean.
- Use the entire pad of your finger, including the sides and tip.
- When recording your fingerprint, touch the scanner until it vibrates.
- The fingerprint scanner has 360° readability—you can touch a recorded finger at any angle to the scanner to turn on the screen or unlock the HTC phone.



You may not be able to set the fingerprint scanner to unlock HTC phone, if you've signed in to an Exchange ActiveSync® account that requires you to set a different screen lock option (such as password). Check with your Exchange Server administrator if your Exchange ActiveSync account supports the fingerprint scanner.

Adding a fingerprint the first time


1. From the Home screen, tap , and then tap **Settings > Fingerprint scanner**.
2. Tap **Add fingerprint**.
If you haven't already set up a lock screen pattern, PIN, or password, you'll be asked to set one up. See [Setting a screen lock](#) on page 158.
3. Tap **Start**.
4. Choose which finger or thumb to use, touch the scanner until it vibrates, then lift your finger or thumb.
5. Repeatedly touch the scanner until the fingerprint has been successfully recorded. You'll get the best results if you hold your finger in the same direction when touching the scanner.
6. After you've successfully recorded your fingerprint, tap **Done**.

You can now use your fingerprint to wake up and unlock your HTC phone.



You'll need to input your backup lock screen pattern, PIN, or password if the scanner doesn't identify your fingerprint after five attempts. You'll only have 10 additional attempts before your data is deleted from the HTC phone.

Adding, removing, or editing fingerprints

1. From the Home screen, tap , and then tap **Settings > Fingerprint scanner**.
2. Enter your pattern, PIN, or password.
3. Do any of the following:
 - Tap **Add fingerprint** to add another fingerprint.
 - Tap a recorded fingerprint to rename or delete it.
 - Tap **Reset fingerprint scanner** to delete all recorded fingerprints.
 - Select **Wake up screen** if you want to be able to tap the fingerprint scanner to wake up and unlock the screen.