

# Controllers

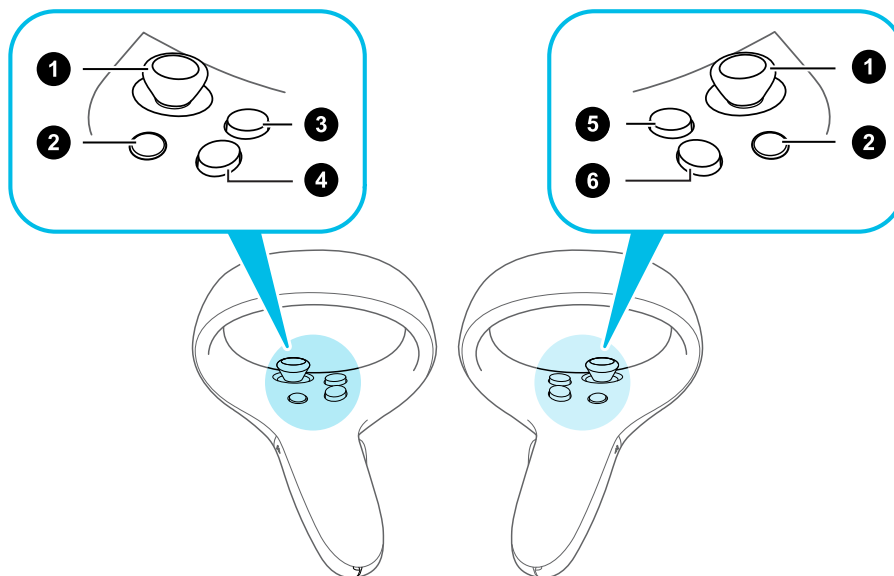
## About the VIVE controllers

Use the controllers to interact with objects in the VR world.



The button labels on the controllers that you received with your developer kit may vary. Please check the hardware for the matching label.

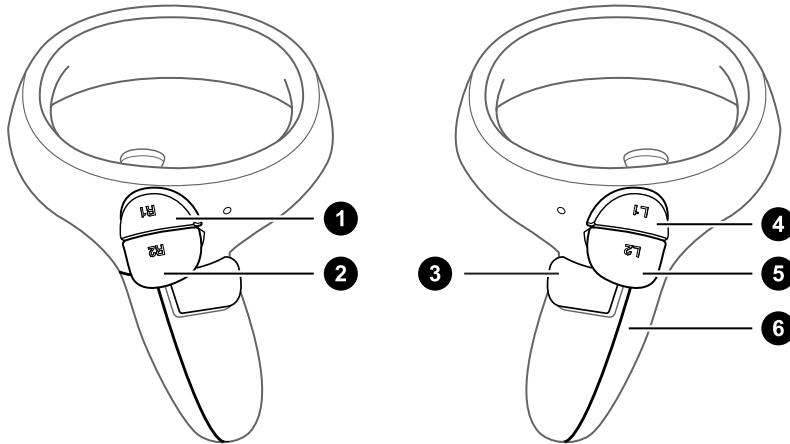
### Front view



1. Joystick
2. System/Menu button
3. B/Y button
4. A/X button
5. B button
6. A button

For certification only

## Back view

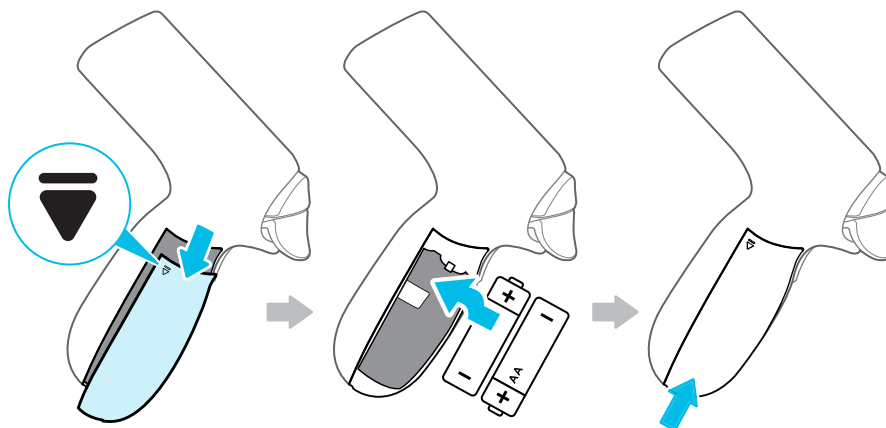


1. Right bumper
2. Right trigger
3. Grip button
4. Left bumper
5. Left trigger
6. Battery cover

## Inserting the batteries into the controller

Make sure that the included batteries have been inserted before turning on the controllers.

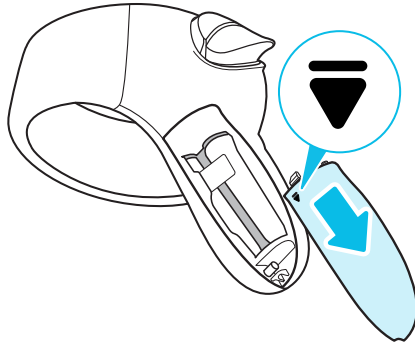
1. Gently push down on the ▼ icon near the top of the battery cover, then slide and lift to remove it.
2. Insert 2 alkaline AA batteries into the compartment. Make sure that the positive and negative ends are facing the correct direction, and that the batteries are put over the thin film in the battery compartment.
3. Replace the battery cover.



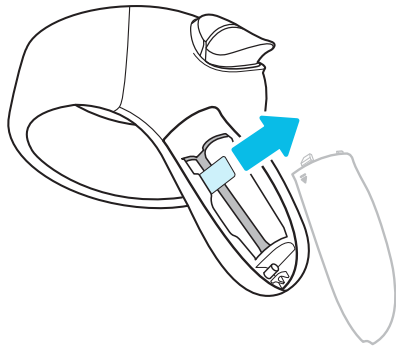
For certification only

## Removing the batteries from the controller

1. Gently push down on the ▼ icon near the top of the battery cover, then slide and lift to remove it.



2. Pull up the thin film in the battery compartment to remove the batteries.



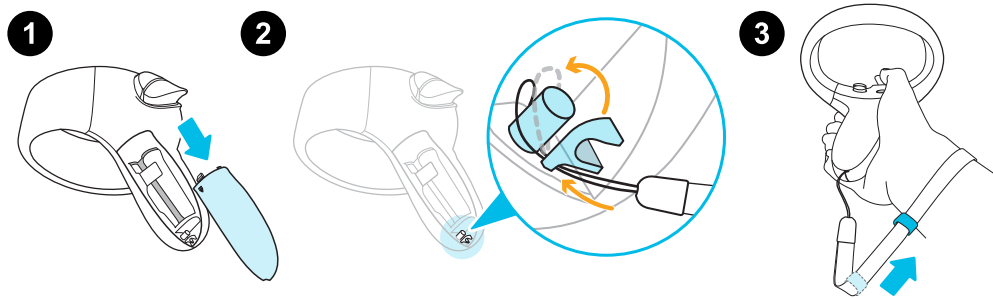
3. Replace the battery cover.

For certification only

## Attaching the lanyards to the controllers

Using the lanyards may help prevent the controllers from accidentally being dropped; however, please do not fling or violently throw the controller as the lanyard may break.

1. Gently push down on the top of the battery cover, then slide and lift to remove it.
2. Insert the lanyard loop on the corresponding hole at the bottom of the controller. Make sure that the loop is hooked around the post.
3. After replacing the battery cover, slide the lanyard over your wrist, and then slide the lock to tighten the lanyard comfortably around your wrist.



For certification only