

2Q6P100

Check what's inside the box

You will see:



2Q6P100
headset



Face cushion



2Q6M200
(x2)



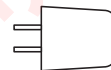
Wrist strap
(x2)



AAA Battery (x4)
for 2Q6M200s



USB Type-C
cable

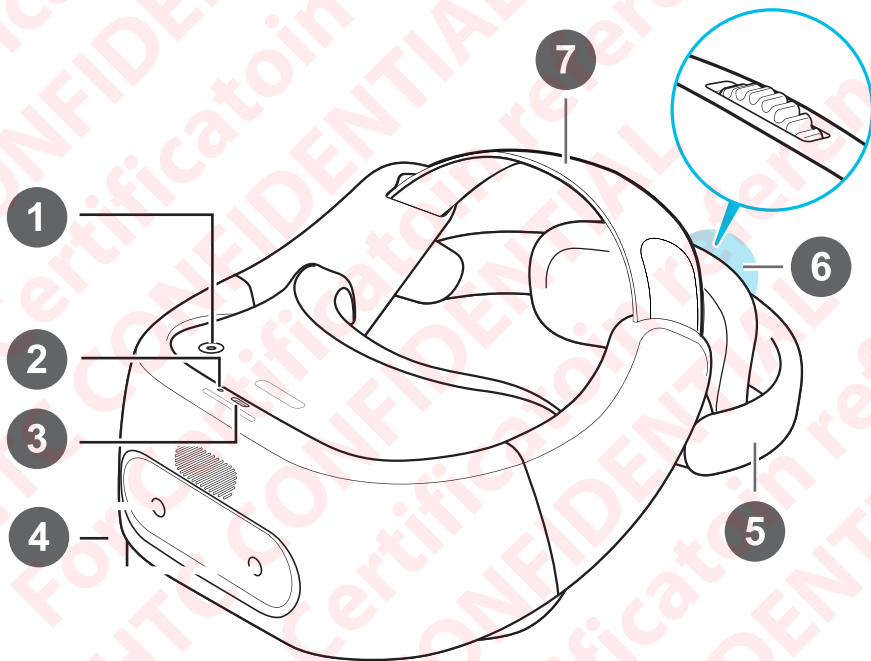


HTC Rapid
Charger 3.0

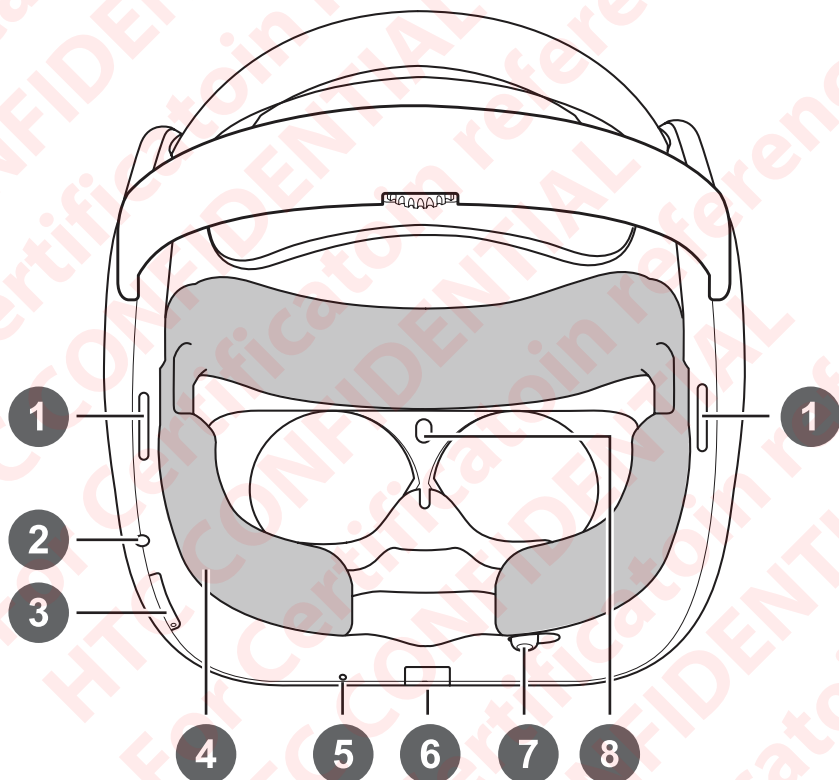
Safety comes first

- Use the 2Q6P100 in a **clear and safe area (at least 2m x 2m) that is indoors.**
- Take a break if you experience discomfort or if the headset gets too hot.
- Attach a wrist strap to each 2Q6M200 and wear the wrist strap when using the 2Q6M200. Using the wrist strap may help prevent the 2Q6M200 from accidentally being dropped; however, please do not fling or violently throw the 2Q6M200 because the wrist strap may break.
- Check the Safety Guide for other warnings and instructions.

Headset



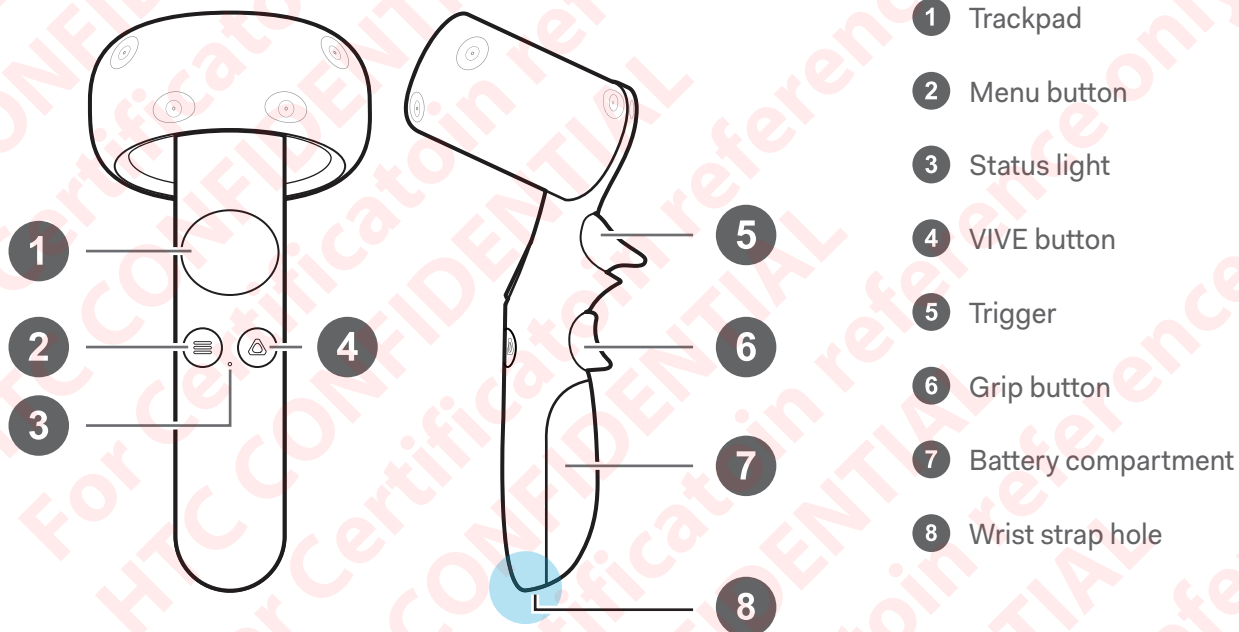
- 1 Power button
- 2 LED (status light)
- 3 USB Type-C connector
- 4 Tracking sensors
- 5 Back head support
- 6 Adjustment dial
- 7 Adjustable head strap



- 1 Speakers
- 2 3.5mm headset jack
- 3 Volume buttons
- 4 Face cushion (replaceable)
- 5 Microphone
- 6 Storage card slot
- 7 IPD adjustment slider
(Adjust the IPD to get a clear and sharp view. See page 9 for details.)
- 8 Proximity sensor

2Q6M200

Use the 2Q6M200s to interact with objects inside VR.



Remember to put two AAA batteries (included in the box) inside each 2Q6M200's battery compartment.

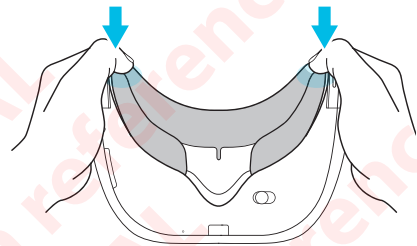
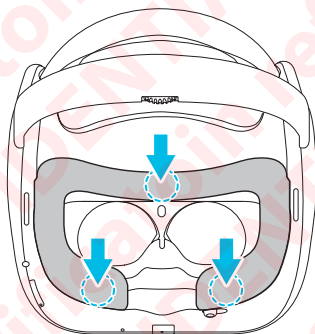
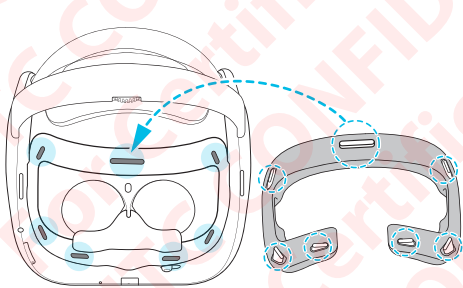
Attaching the face cushion to the headset

Before using the 2Q6P100 headset, attach the face cushion to it first.

Insert the central tab on the face cushion into the slot on the headset, and then align the other face cushion tabs to the remaining slots on the headset frame.

With your thumbs, press these areas on the face cushion.

Hold the headset, similar to the illustration, and then press down on the marked areas on the face cushion until you hear a soft click to lock the face cushion to the headset.



Sign up for a VIVEPORT account

You will need a VIVEPORT account to log in to VIVEPORT. On your computer's web browser, go to focus.viveport.com and sign up for one using your email address or mobile phone number.

1 Turn on the headset

Charge the headset for around 2.5 hours (or until the LED turns white) using the USB Type-C cable and power adapter included in the box.

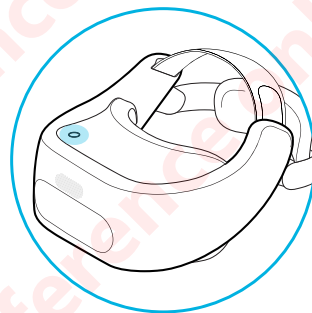
After charging, press and hold the Power button for a few seconds to turn the headset on.

Before putting on the headset, some things to take note:

Remove the protective films that are covering the tracking sensors and headset lenses.

You can connect the headset to the Internet to access apps from VIVEPORT so remember the wireless network name you want to connect to and the information needed to connect to it.

Make sure to have the 2Q6M200 nearby (with batteries inserted) where you can easily pick it up.



2 Wear the headset

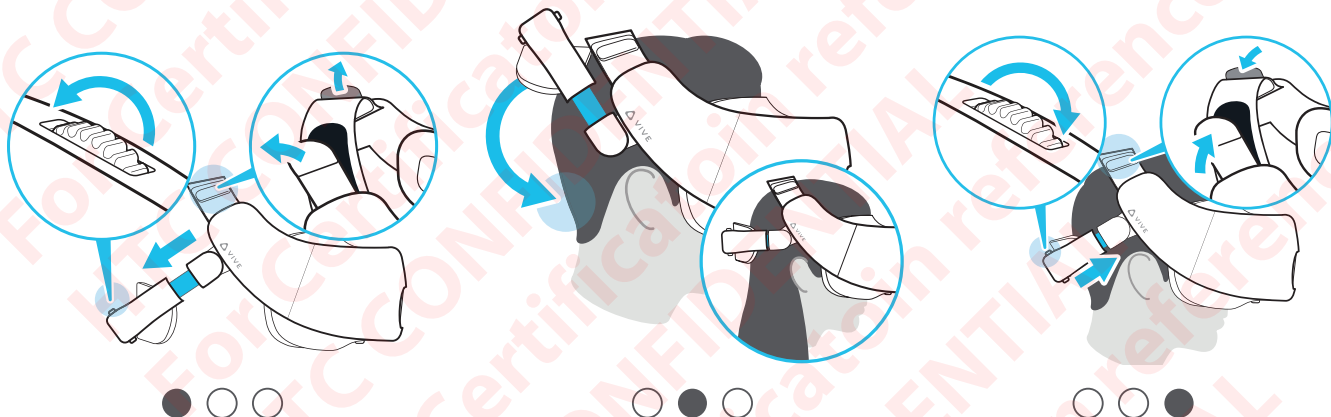
- **Make sure to loosen** the velcro straps on top.
- **Make sure to loosen** the back head support using the Adjustment dial. **Do not** loosen the support by just pulling it.

Note: If you have long hair or a ponytail, loosen the back head support all the way.

- Wear the headset and then pull down the back head support and position it at the base of your skull.

Note: If you have long hair, position the back head support above the base of your skull (see illustration).

- Tighten the velcro straps on top and the back head support. Use the adjustment dial when tightening the back head support. **Do not** push it in.
- The fit should be snugged.



3 Set up the headset

Just follow the instructions shown in the headset and you'll be immersed in VR in no time. Some of the things you'll learn and do when setting up 2Q6P100:

A. Pair the 2Q6M200s with the headset

Press and hold the VIVE button on both 2Q6M200s for a few seconds to turn them on and start the pairing process. The pairing is successful when the 2Q6M200s vibrate for a few seconds. After pairing, follow the onscreen instructions to finish setting up 2Q6P100.

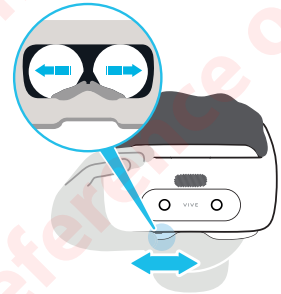
B. Adjust the IPD

Interpupillary distance (IPD) is the distance between the center of the pupils in your eyes. Setting it to the correct distance is one of the keys to having a great viewing experience in VR.

Follow the guide to learn how to set the IPD properly and position the headset correctly on your face. If you need to adjust the IPD in the future, just move the adjustment slider below the headset.

C. Learn about the 2Q6M200s

Follow a simple tutorial to familiarize yourself with the 2Q6M200s. We'll walk you through the uses of the buttons on the 2Q6M200s.



D. Connect the headset to a wireless network

Scroll through the list of available wireless networks by swiping up or down on the 2Q6M200 Trackpad. Select the wireless network by pointing the 2Q6M200 at the wireless network name and then pressing the Trackpad. Select **More** if you don't see your wireless network in the list.



E. Sign in to VIVEPORT

By signing in to VIVEPORT, you get access to a library of apps that you can download for free or purchase.

Quick Menu

Open the Quick Menu to change headset settings, access VIVEPORT, go to VIVE Home, check apps that you've downloaded or purchased, and more. While in VR, you can press the VIVE button on the 2Q6M200 anytime to call up the Quick Menu.

To close the Quick Menu, press the VIVE button again.



Go to VIVE Home.



Show all the apps you have downloaded, purchased, and installed.



Change 2Q6P100 settings.



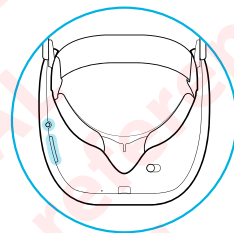
Browse VIVEPORT for apps and experiences.



Sign in or check your VIVEPORT account. You can also set up your pay password.

Audio makes a difference

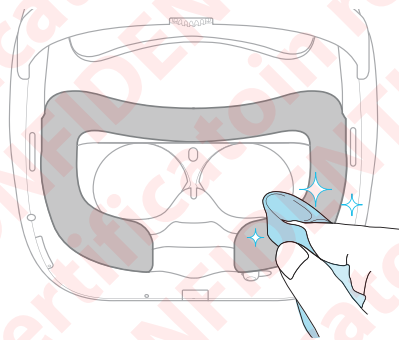
Listen using the built-in speakers or for a more immersive experience, plug in your own pair of headphones. Press the Volume buttons on the bottom left side of the headset or the right side of the 2Q6M200 to adjust the volume.



Product care

Follow these tips to properly care for your 2Q6P100.

- Keep the headset lenses away from sharp objects, including cable tips. This will prevent the headset lenses from being scratched.
- When not in use, store the headset with the lenses pointed away from direct sunlight. Failure to do so may damage the headset display.
- When cleaning the lenses, use a cleaning cloth and moisten it with alcohol or lens cleaner. Wipe in a circular motion from the center to the outer edges of the lenses. Do not scratch the lenses nor disassemble other parts of the headset.
- To clean the face cushion, dampen a clean smooth cloth with cold water or diluted alcohol and gently wipe the area you want to clean, and then allow the cleaned area to dry.



© 2019 HTC Corporation. All rights reserved. VIVE, the VIVE logo, 2Q6P100, 2Q6P100 logo, and VIVEPORT are trademarks of HTC Corporation.

www.vive.com



91H0xxxx-xxM Rev.A