

**Let's
get
started.**

Inside the box



Phone



SIM tool



Earbuds



Power adapter



Quick Switch
Adapter



Earbud adapter



USB-C cable

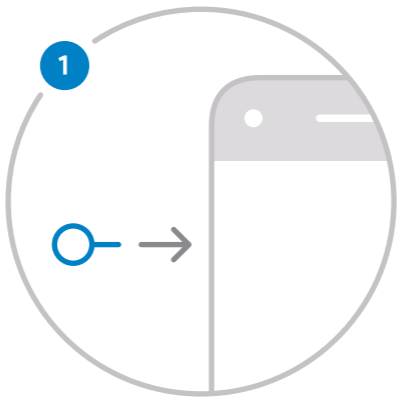
Activate your new phone



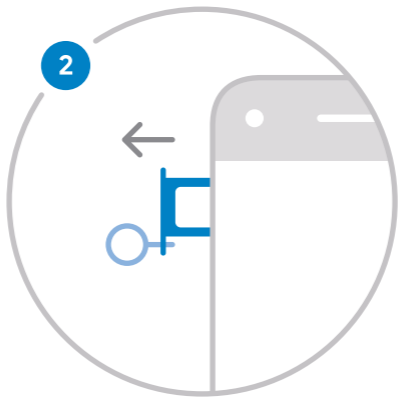
If you haven't already activated your phone with your carrier, you'll need to put your old SIM card into your new Phone. Follow these steps to learn how. You can find the SIM tool in your **Phone** box.



For iPhone® users, turn off iMessage® on your old phone before following the steps so you can get your text messages on your Phone. For help, visit xxx/imessagehelp

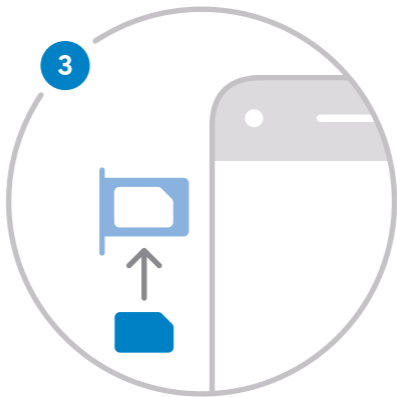


1. Make sure both phones are turned off before removing your SIM card.



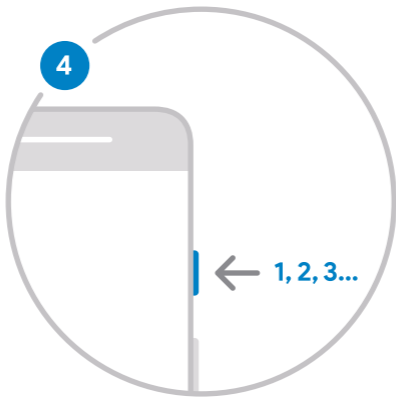
- 2.** Insert the SIM tool into the small hole on your **Phone** to eject the SIM card tray. Press firmly until the tray pops out.

Do the same thing on your old phone to eject the tray.



- 3.** Remove the SIM card from your old phone and place it into the SIM tray on your new phone.

Gently push the tray in until it clicks into place.



- 4.** Press and hold the power button for 5 seconds to turn on your **Phone**.

You're now connected to your network and can start using your new **Phone**.



To learn more about your new
Phone go to **our website**

Transfer your contacts, photos, messages, and more

1. Turn on your **Phone** and go through the on-screen steps.
2. Once you get to the copying data screen, find the adapter in your box and plug it into your **Phone**.
3. Connect the phones using your old phone's cable, then unlock your old phone.

4. Sign in with your Account on your Phone.
5. Choose which data you want to transfer to your Phone. You can still use your phone while the transfer is in progress.

When you're done, you'll see a transfer summary and can disconnect the cable.



Phone



Quick Switch
Adapter



Old phone's cable



Old phone

Adjusting your earbuds

To adjust the fit, pull the cord to change the size of the loop. It should fit comfortably in your ear.

