

Entering an Internet address

With Pocket Internet Explorer and a connection to the Internet, you can view Web sites on your iPAQ h2200 by typing an address or Universal Resource Locator (URL) in the **Address bar**.



Web sites that use HTML 4.0, DHTML, animated GIF images, and Java applets may not work correctly in Pocket Internet Explorer without additional software.

To enter an Internet address:

1. From the **Start** menu, tap **Internet Explorer**.
2. Tap **View**, then **Address Bar**.



3. Enter the address (URL) in the **Address** bar.



4. Tap the **Go** icon.

Using a Favorites List

With Pocket Internet Explorer and a connection to the Internet, you can view Web sites on your iPAQ h2200 Series by selecting a Web site from your **Favorites** list.

To select a Web site from your **Favorites** list:

1. From the **Start** menu, tap **Internet Explorer**.
2. Tap the **Favorites** icon and the Web site you want to view.



Communications

Using E-mail

To send and receive e-mail messages, synchronize your iPAQ h2200 unit with your computer using Microsoft ActiveSync or connect to the Internet or your network through an e-mail service.

If you are connecting through an e-mail service, you must set up a remote connection using a modem card, ethernet card, 802.11X card, or a Bluetooth-enabled device.

If you are using ActiveSync to send and receive e-mail messages, you will see the name of the folder you are using at the bottom of the screen. If you are using an e-mail service, use that folder to send and receive e-mail.

The Inbox on your iPAQ h2200 unit is similar to the Inbox on your computer. E-mail is saved in five default folders:

- Inbox
- Outbox
- Deleted Items
- Drafts
- Sent Items

Setting up E-mail

If you are using an Internet or network connection, you must set up an e-mail service.



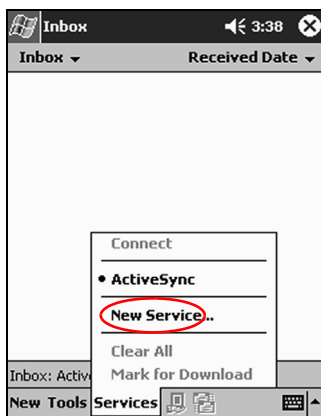
If you are using ActiveSync to send and receive e-mail, you do not need to set up an e-mail service. Skip to the section “Creating/Sending E-mail.”

To set up an e-mail service:

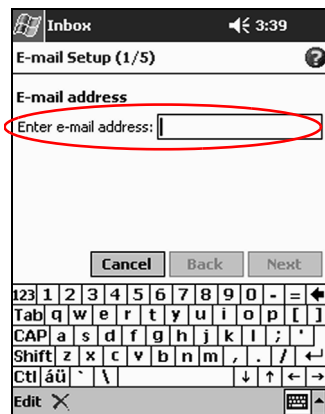
1. From the **Start** menu, tap **Inbox**.
2. Tap **Services**.



3. Tap **New Service**.



4. Enter e-mail address information in the next five screens, then tap **Next** when finished with each one.



Tap the “?” icon for help on each screen.

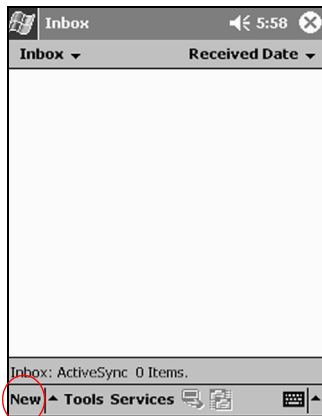
Creating/sending E-mail

To create and send e-mail messages through an e-mail service, from the Start menu, tap **Inbox > Services**, then select the e-mail service you want to use.

If you are using Microsoft ActiveSync to send and receive e-mail, you do not need to set up an e-mail service, simply complete the following instructions.

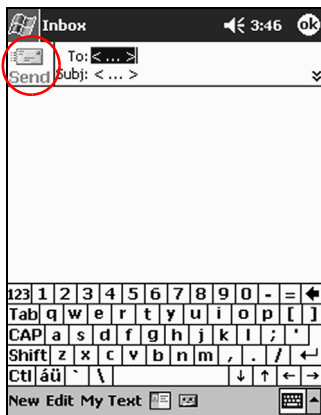
1. From the **Start** menu, tap **Inbox**.

2. Tap **New** to write a new e-mail.

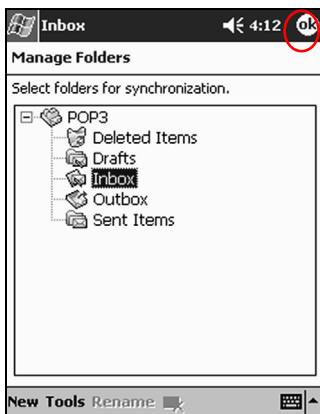


3. When the e-mail is complete, tap **Send** to place the e-mail in the **Outbox**.

The e-mail is sent when you synchronize or it is sent automatically if you are connected to the Internet or your network through an e-mail service.



4. If you do not want to send your e-mail yet, tap **OK** to leave your e-mail in the **Drafts** folder.

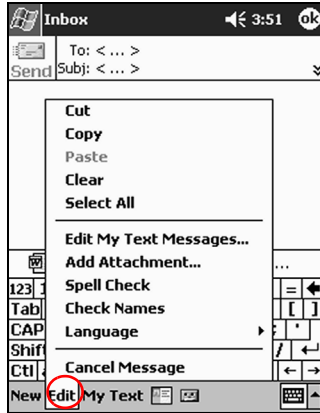


Adding an Attachment

1. From the **Start** menu, tap **Inbox**.
2. Tap **New** to write a new e-mail.

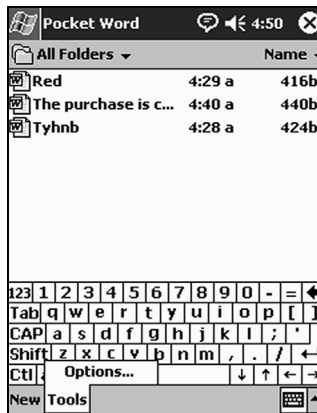


3. Tap the **Edit** tab.

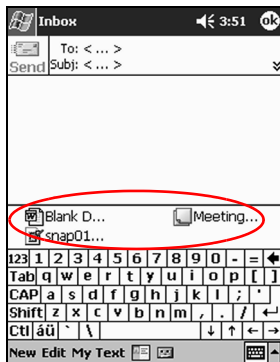


4. Tap **Add Attachment** to see all folders in My Documents.

5. Tap the file to be attached.



See the file name you selected below the body of the e-mail.



Receiving E-mail

To receive e-mail, synchronize your iPAQ h2200 unit Inbox with your computer using Microsoft ActiveSync or connect to the Internet or your network through an e-mail service.

Use the ActiveSync folder to receive e-mail through ActiveSync. The name of the folder you are using is at the bottom of the screen. If you are using an e-mail service, use that folder to receive e-mail.

If you are using ActiveSync, you can synchronize your personal folders from Outlook on your computer with **Inbox** on your iPAQ h2200 unit.



If you are using ActiveSync, you do not receive e-mail attachments by default; you must select this option in ActiveSync.

1. From the **Start** menu, tap **Inbox**.

2. Tap **Services**.

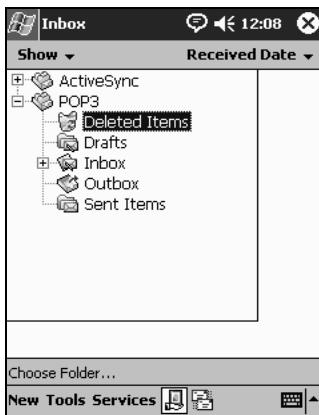


3. Tap the e-mail service you want to use.
4. If you have not set up an e-mail service, synchronize your iPAQ h2200 unit with your computer.
 - a. From the **Start** menu, click **Programs** then click **ActiveSync**.
 - b. Click **Sync**.

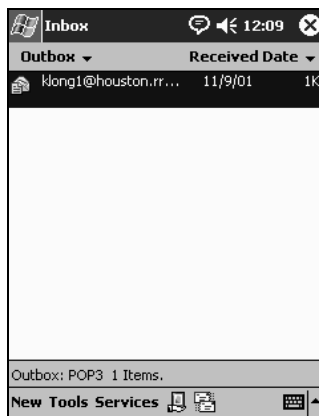
Opening E-mail

1. From the **Start** menu, tap **Inbox**.
2. Tap the down arrow next to **Inbox** to see a list of your folders

3. Tap the folder where you have saved the e-mail.



4. Tap the e-mail message to open it.

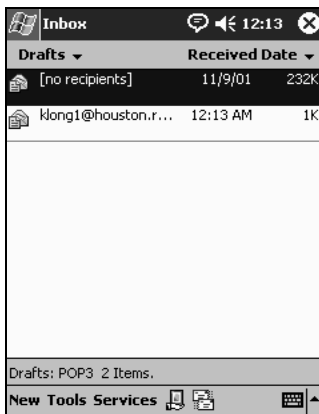


Deleting E-mail

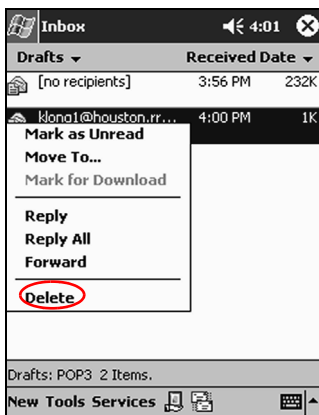
When you delete e-mail, it is placed in the **Deleted Items** folder, but the e-mail is not permanently deleted until you tap **Empty Deleted Items** from the **Tools** menu.

1. From the **Start** menu, tap **Inbox**.
2. Tap the folder where you have saved the e-mail.

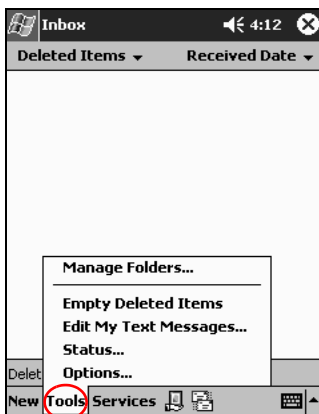
3. Tap and hold the e-mail to be deleted.



4. Tap **Delete** to move the e-mail to the **Deleted Items** folder.



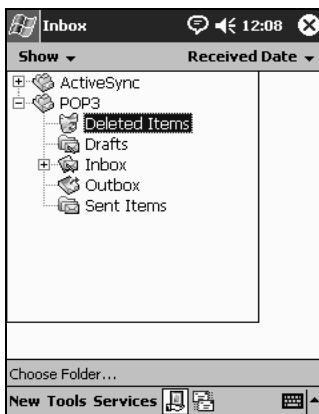
5. Tap **Tools**, then **Empty Deleted Items** to permanently delete the e-mail.



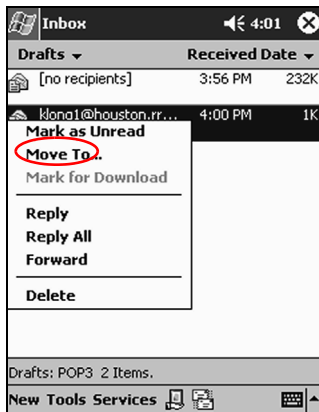
CAUTION: When you delete e-mail from your h2200 Series, you also delete it from your personal computer.

Moving E-mail

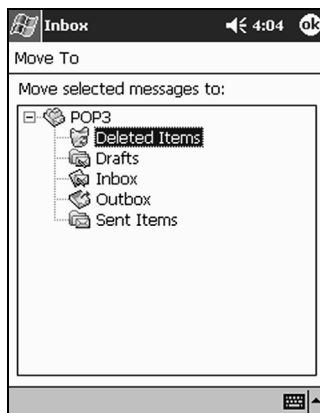
1. From the **Start** menu, tap **Inbox**.
2. Tap the folder where you have saved the e-mail.



3. Tap and hold the e-mail to be moved.
4. Tap **Move To**.



5. Tap the folder where the e-mail will be moved.



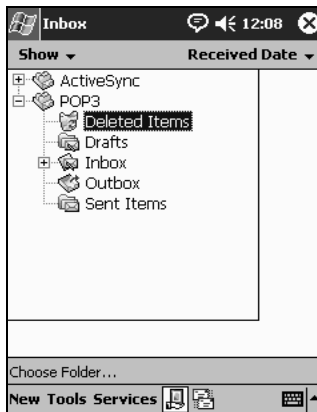
6. Tap **OK** to move the e-mail.

Opening a Folder

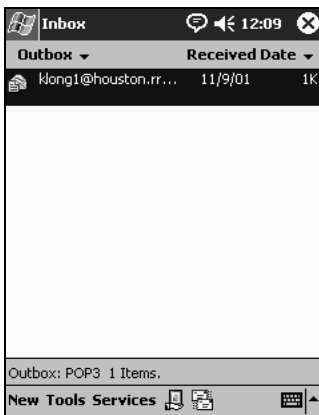
If you are using Microsoft ActiveSync, open the default folders or open your personal folders that you have synchronized from Outlook on your computer with the Inbox on your iPAQ h2200 Series.

If you are using an e-mail service, open the default folders or open any folder that you have created.

1. From the **Start** menu, tap **Inbox**.
2. Tap the down arrow next to **Inbox** to see a list of your folders.



3. Tap a folder to see the e-mail in that folder.



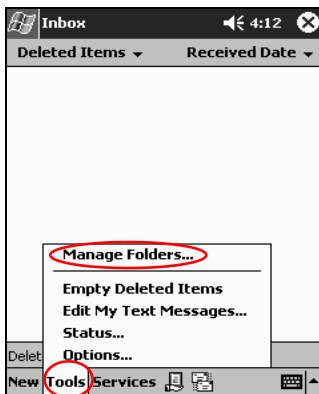
Managing Folders

Use folders to organize your e-mail if you are using an e-mail service, and create additional folders that you can rename or delete.

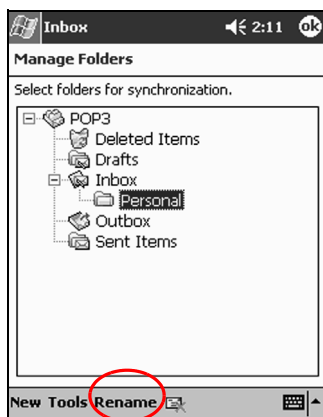
If you are using Microsoft ActiveSync, you **cannot** create additional folders in the Inbox. However, you can synchronize your personal folders from Outlook on your computer with Inbox on your iPAQ h2200 Series. You **cannot** rename or delete these folders in Inbox.

1. From the **Start** menu, tap **Inbox**.

2. Tap **Tools**, then **Manage Folders**.



3. Tap **New** to create a new folder.
4. Tap **Rename** to rename a folder.



5. Tap **Remove Folder** to delete a folder you created.
6. Tap **Yes** to permanently delete the folder.

Using the Contacts Application

Enter information about friends, family members, or business associates in the Contacts application.

Use Contacts to:

- Create a contact
- View and edit a contact
- Categorize your contacts
- Delete a contact

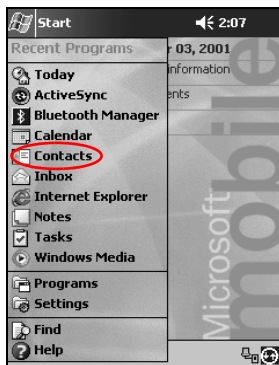


Press the **Contact** application button to navigate quickly to Contacts.

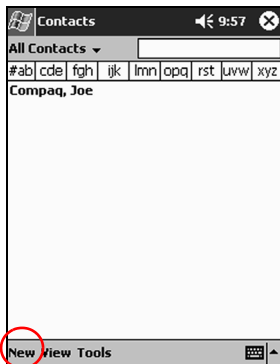
Creating a Contact

To create a contact from the **Start** menu or **Today** screen:

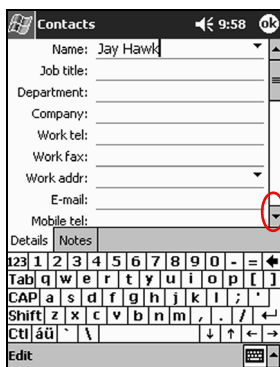
1. From the **Start** menu, tap **Contacts**.



2. Tap **New** to create a new contact.

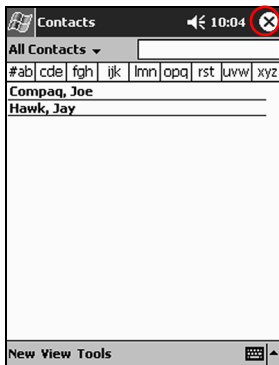


3. Tap any item and enter information. Scroll down to see more fields.



4. Tap the down arrow next to any item and enter additional details about the item.
 - a. For example, tap the **Name** down arrow to enter the contact's title, first, middle, and last name, and suffix.
 - b. Tap anywhere outside the box to stop entering details.

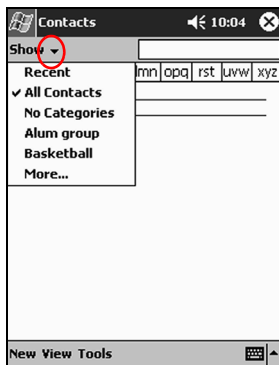
5. Tap **OK** to save the contact information and return to the list of contacts.



Viewing a list of Contacts

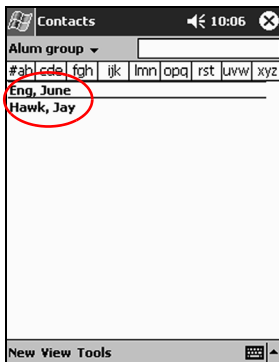
To display a list of your contacts from the last category selected:

1. From the **Start** menu, tap **Contacts**.
2. Tap the down arrow next to the category name to see the list of categories.



3. Tap a category name to see a list of contacts placed in that category.

4. Tap a contact's name.



Editing Contact Information

1. Tap a contact's name.
2. Tap **Edit** to see the contact information.
3. Edit the contact information.
4. Tap **OK** to save the contact information and return to the list of contacts.

Categorizing Contacts

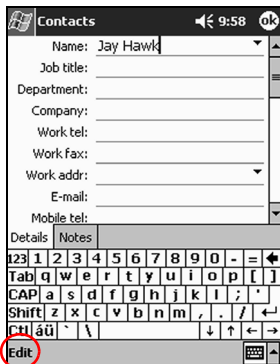
You can use categories to filter your list of contacts. This helps to view and edit your contact information.



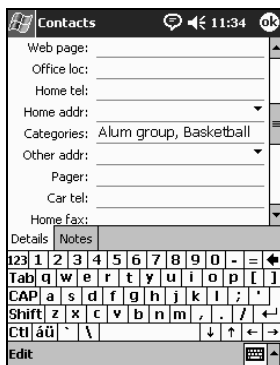
After you create a new category, assign a contact to that category, so the category displays in the list of categories.

1. From the **Start** menu, tap **Contacts**.
2. Tap a contact's name.

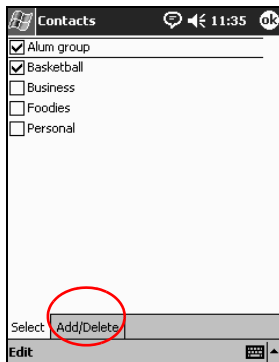
3. Tap **Edit** to see the contact information.



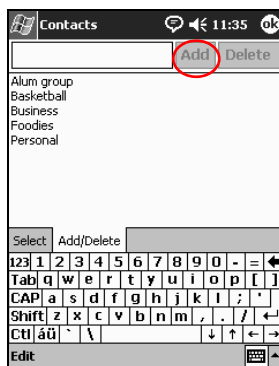
4. Tap the **Categories** field to see a list of available categories.
You may have to scroll down to see the **Categories** field.



5. Tap the **Add/Delete** tab to create a category.




6. Enter the name of the new category, then tap **Add**.

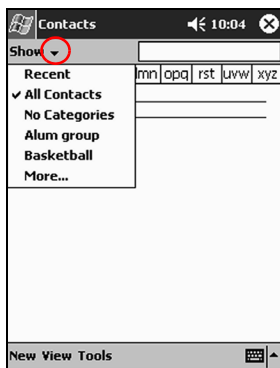


7. Tap **OK** to place your contact in the category.
8. Tap the **Categories** field again to place your contact in additional categories.
9. Tap additional category names to select them, then tap **OK** to list the categories you selected in the **Categories** field.
10. Tap **OK** to save the category information and return to the list of contacts.

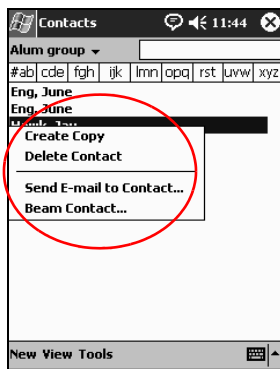
Deleting Contacts

 **CAUTION:** If you delete a contact on your iPAQ h2200 Series and synchronize Contacts with your computer, you also delete the contact in Outlook on your computer.

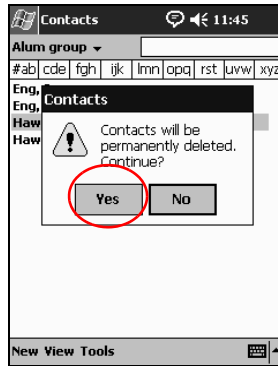
1. From the **Start** menu, tap **Contacts** to see a list of your contacts from the last category selected.
2. Tap the down arrow next to the category name to see a list of categories.



3. Tap a category name to see a list of contacts placed in that category.
4. Tap and hold a contact's name to see a popup menu.



5. Tap **Delete Contact** to remove the contact from the list.
6. Tap **Yes** to delete the contact permanently.



Using the Universal Remote

The Universal Remote (Nevo) transforms your h2200 unit into a sophisticated and easy-to-use wireless home control. Use Nevo to access and control up to 20 infrared (IR) controlled devices in the home or office, such as televisions, VCRs, DVDs, audio, lights, fans, blinds, and other home automation devices.

The universal remote comes pre-programmed with codes for thousands of infrared supported devices. You can download other codes from the Nevo web site (www.mynevo.com).



The Universal Remote program, Nevo, is preinstalled on select iPAQ h2200 Series models equipped with a Consumer Infrared module.

With the Universal Remote, you can:

- Control and operate infrared supported office, entertainment, and home automation equipment
- Set up Favorite channels
- Share the remote with others
- Create unique personal settings

The first time you run Nevo, only two icons will display in the device wheel:

- The add devices icon
- The add activities icon

Using Configuration Icons

Use the configuration icons to customize, select user menus, or select rooms. The configuration icons are located at the bottom of the main Nevo screen.



Tap the **customize** icon to add, edit, and delete devices and activity, also customize Home, screens, or Favorites. This allows additional customization for controlling equipment in different rooms.



Tap the **user** icon to specify user defined favorites or device settings. You can add, edit, and delete user settings.



Tap the **room** icon to select a device in a specific room. You can add, edit, and delete room assignments.

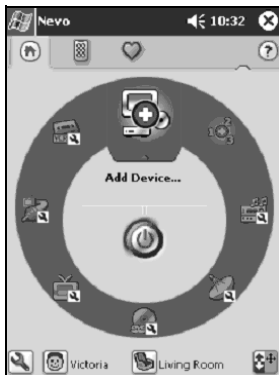
Adding a Device

Before you can use Nevo to control a device, you must add the device to the device wheel. You can set up the universal remote to control up to 12 devices in a room.

To add a device to the device wheel:

1. From the **Start** menu, select **Nevo**

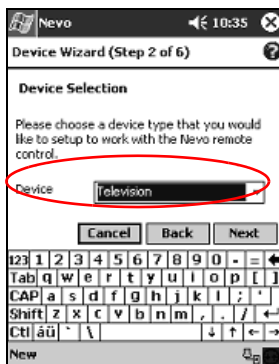
2. Look for your device on the wheel.



3. Select one of the following:
 - a. Tap the **Add Devices** icon.
 - b. Tap the device if the wrench icon displays.
 - c. Tap the wrench icon, then tap **Add Device**.
4. Tap **Next**.



5. Select your device from the **Device** list, then tap Next.

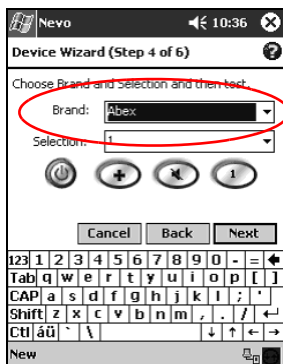


6. Select the setup method. It is recommended to search for your device by the manufacturer's brand name.



7. Tap **Next**.

8. Select your device from the **Selection** list.

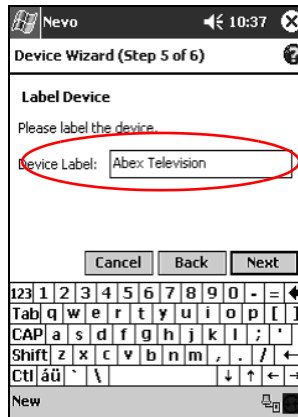


9. Tap the test icon to test whether you can power on and off your device. If not, try another code and repeat this step.

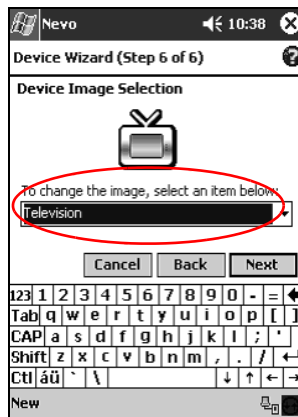


10. Tap **Next**.

11. Enter a name for the device, then tap **Next**.



12. Select an icon for your device. The universal remote automatically assigns an icon to your device, but you can change it.



13. Tap **Next** to view your device on the wheel.

Turning on a Device

1. From the **Start** menu, select **Nevo**.
2. Click a device on the wheel to position it at the top of the wheel.



3. Tap the **Power** button.

Adding Activities

To customize the keys on devices to switch activities:

1. Tap the **Activity** icon.



2. Click **Next**.



3. Click **Next**.

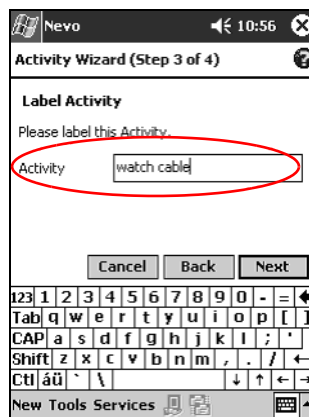


4. Record the keystrokes for commanding multiple operations into one activity.

5. Tap the **Customize** icon and select **Finish Wizard**.



6. Assign a name to the activity, then click Next.



- Assign an icon to the activity. Activities are designated in gold on the wheel.



- Click **Next**.
- Notice the activity on the wheel.



Using Bluetooth

Select models of the iPAQ h2200 Series are equipped with built-in Bluetooth technology that allows short-range connections and provides fast, reliable, and secure wireless communication.

With Bluetooth, you can perform the following tasks between two Bluetooth devices, within range, without a physical connection:

- Exchange contacts, calendar items, and tasks
- Send or exchange business cards
- Transfer files
- Access dial-up networks
- Synchronize with a computer
- Partner with a cell phone
- Connect to serial ports
- Connect to Bluetooth wireless local area networks (WLANs)
- Print to a Bluetooth printer
- Create a personal area network (PAN) to chat, play games, etc.

Use of dial-up networks and WLANs may require separately purchased additional hardware and compatible equipment, in addition to a standard WLAN infrastructure and a separately purchased service contract.



Use of dial-up and wireless Internet, e-mail, corporate networks, and other wireless communications, such as Bluetooth-enabled devices, may require separately purchased additional hardware and other compatible equipment, in addition to a standard Wireless LAN (WLAN) infrastructure and a separately purchased service contract. Check with your service provider for availability and coverage in your area. Not all Web content may be available. Some Web content may require installation of additional software.

Getting Acquainted with Bluetooth

Before you start using Bluetooth to establish wireless connections, take a few minutes and familiarize yourself with:

- Terms used in this chapter
- Supported services
- Bluetooth settings
- Bluetooth Manager

Understanding Terms

The following are Bluetooth terms used throughout this chapter.

The Term...	Means...
Authentication	The user must verify a numeric passkey before a connection or activity can be completed.
Authorization	The user must approve a connection or activity before it can be completed.
Bluetooth neighborhood or device group	A collection of Bluetooth devices.
Bonding (Paired devices)	To create a trusted connection between your device and another. Once a bond is created, the two devices become paired. A trusted device does not require authentication or authorization.
Device address	The unique electronic address of a Bluetooth device.
Device discovery	The location and recognition of another Bluetooth device.
Device name	The name a Bluetooth device provides when discovered by another device.
Encryption	A method of protecting data.
Link key	A key used to securely pair devices.
Passkey	A code you enter to authenticate connections or activities requested by other devices.
Personal Information Manager (PIM)	A collection of applications used to manage daily business tasks (e.g., Contacts, Calendar, and Tasks).
Profiles	A collection of Bluetooth settings.
Service discovery	Determining which applications you have in common with other devices.

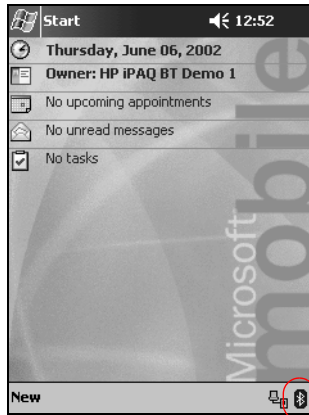
Reviewing Supported Services

The functions that Bluetooth supports are called services. You can only communicate with Bluetooth devices that support the following services:

- Serial Port (COM port)
- LAN Access
- Dial-up Networking
- Information Exchange
- File Transfer
- Print
- Personal Area Network (PAN)

Working with Bluetooth Settings

Open **Bluetooth Settings** by tapping on the **Bluetooth** icon in the lower-right corner of the **Today** screen.



When the **Bluetooth** icon is blue, Bluetooth is active. When the icon is grayed with a red X, Bluetooth is inactive.

From the tabs in **Bluetooth Settings**, you can:

- Turn the hardware on and off
- Select a user profile
- Change your iPAQ h2200 Series Bluetooth name
- Specify security settings
- Define settings for sharing and connecting
- View software and port information

You must use the arrows to the right of the tab names to scroll through the tabs.

Opening Bluetooth Settings

From the **Today** screen, tap the **Bluetooth** icon.

Turning ON Bluetooth

You can apply or remove power to the Bluetooth hardware from **Bluetooth Settings**.

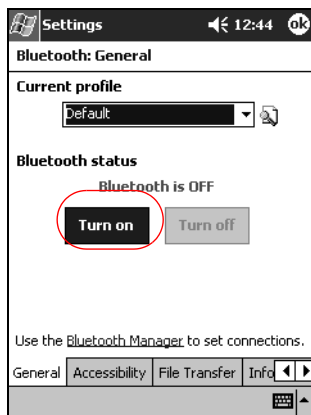


To preserve battery power, it is recommended that you enable (turn on) Bluetooth only when using it.

When Bluetooth is off, no incoming or outgoing connections are possible.

To turn on Bluetooth:

1. From the **Today** screen, tap the **Bluetooth** icon.
2. Tap the **Turn on** button to enable.



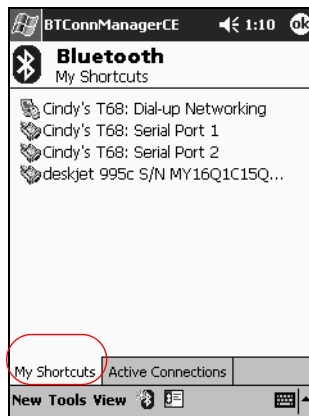
Tap the **Turn off** button to disable.

Working with the Bluetooth Manager

Using Bluetooth Manager, you can:

- Establish connections
- Display shortcuts
- Exchange business cards
- Control the on-screen display

The first screen that displays is **My Shortcuts**.



Opening Bluetooth Manager

1. On the **Today** screen, tap **Start**.
2. Tap **Programs**, then **Bluetooth Manager**.

Locating and Selecting a Device

Several tasks will require you to locate a device and connect to it. When you are required to locate a device, the Bluetooth browser automatically assists by searching for other Bluetooth devices.

Once you locate a device, tap it to select. You will be returned to the previous window.

Understanding Profiles

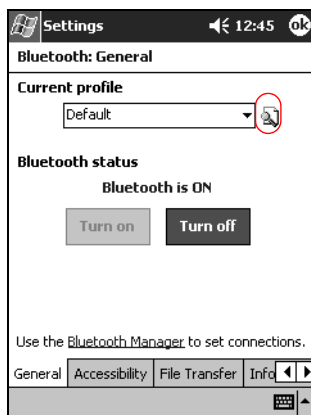
Use profiles to quickly enable selected personal settings in multiple environments.

Creating a Profile

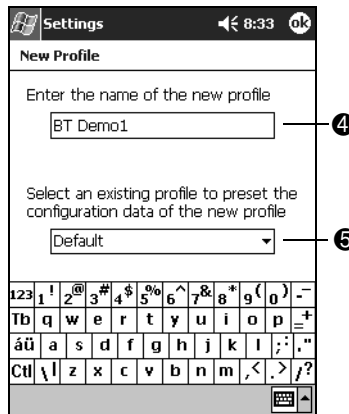
A new profile does not automatically become active. You must select it from the **Current Profile** list to activate it.

To create a profile:

1. From the **Today** screen, tap the **Bluetooth** icon.
2. From the **General** tab, tap the **Profile** icon.



3. Tap the **New** button.
4. Enter a descriptive name.
5. Select an existing profile to use as a template.



6. Tap **OK**.

Activating a Profile

When a new profile is created, you will need to activate it.

To activate a profile:

1. Create a profile.
2. From the **Today** screen, tap the **Bluetooth** icon.
3. From the **General** tab, select it from the **Current Profile** down arrow list.
4. Tap **OK**.

Renaming a Profile

1. From the **Today** screen, tap the **Bluetooth** icon.
2. From the **General** tab, tap the **Profile** icon.
3. Select a profile from the **Add/Delete Profiles** list.
4. Tap the **Rename** button.
5. Enter a new descriptive name.
6. Tap **Enter**.
7. Tap **OK**.

Deleting a Profile

1. From the **Today** screen, tap the **Bluetooth** icon.
2. From the **General** tab, tap the **Profile** icon.
3. Select a profile from the **Add/Delete Profiles** list.
4. Tap the **Delete** button.
5. Tap **Yes** to confirm you want to delete the profile.
6. Tap **OK**.

Saving Configuration Settings in a Profile

You can save the iPAQ h2200 Series Bluetooth configuration settings to any profile.

To save configuration settings:

1. From the **Today** screen, tap the **Bluetooth** icon.
2. From the **General** tab, tap the **Profile** icon.

3. Select a profile from the **Add/Delete Profiles** list or create a new one.
4. Tap **OK**.
5. Set up your iPAQ h2200 Series. You should specify the desired connection, sharing, and security settings in all Bluetooth **Settings** tabs.
6. Tap **OK** to close the Bluetooth **Settings**. The changes are automatically saved.



Bluetooth must be turned **on** for changes to be saved.

Setting Accessibility Properties

You may want to enter or change accessibility properties to define how your iPAQ h2200 Series interacts with other Bluetooth devices.

Entering a Device Name

The device name is what other devices see when they locate your device.

To enter a device name:

1. From the **Today** screen, tap the **Bluetooth** icon.
2. Tap the **Accessibility** tab.
3. Highlight the name in the **Name** field and enter a new one.
4. Tap **OK** to save your changes.

Allowing Others to Locate Your Device

You can allow other devices to search and locate your iPAQ h2200 Series.



If another remote device has your device's address, that device may be able to locate and connect to you even though you did not select for your device to be discovered.

To allow others to locate your device:

1. From the **Today** screen, tap the **Bluetooth** icon.
2. Tap the **Accessibility** tab.
3. Select **Other devices can discover me**.
4. Tap **OK** to save the changes.


Pairing Devices

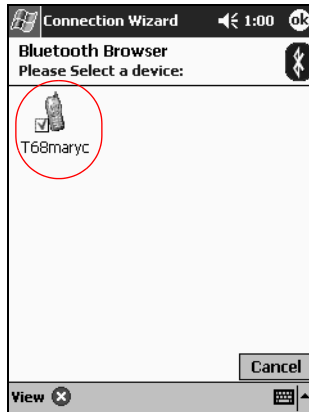
You can pair devices so that they must exchange a computer generated key prior to each connection. The security key is also called a "Link Key." It is generated from a unique Bluetooth device address, a random number, and a user-defined password.

Once two devices are paired, they have a trusted relationship with each other that can be verified using a link key. No additional input is needed from the user. Therefore, connections and activities can be performed between the devices without constant authorization from the user.

To pair devices:

1. From the **Today** screen, tap **Start**.
2. Tap **Programs**, then **Bluetooth Manager**.
3. Tap **Tools**, then **Paired devices**.
4. Tap **Add**.

5. Tap the **Lookup**  icon.
6. Tap a device.



7. Enter a password in the **Passkey** field.
8. Tap **OK**.
9. Enter the same passkey into the other device.



Some devices, such as mobile phones, need to be placed in a mode to accept a bond from another device. Refer to that device's user instructions for more information.

Unpairing Devices

You can remove a paired relationship between devices.

1. From the **Today** screen, tap **Start**.
2. Tap **Programs**, then **Bluetooth Manager**.
3. Tap **Tools**, then **Paired devices**.
4. Tap a device name.
5. Tap **Remove**.
6. Tap **Yes** to remove the pairing.

Allowing Connections

You can determine if all devices or only paired devices can connect to your iPAQ h2200 Series.

Allowing All Devices to Connect

1. From the **Today** screen, tap the **Bluetooth** icon.
2. Tap the **Accessibility** tab.
3. Select **Allow other devices to connect**, then **All devices**.
4. Tap **OK**.



CAUTION: This allows any device, even those unknown to you, to connect to your iPAQ h2200 unit. Once they are connected, security settings for specific services will apply as specified in the Bluetooth Settings.

Allowing Paired Devices to Connect

Paired devices share and exchange an internally generated Link Key prior to each connection. The Link Key is derived from a unique Bluetooth device address, a random number, and user-defined password.

This feature allows only devices that you trust to connect to your iPAQ h2200 Series.

To allow paired devices to connect:

1. From the **Today** screen, tap the **Bluetooth** icon.
2. Tap the **Accessibility** tab.
3. Select **Allow other devices to connect**, then **Paired devices only**.
4. Tap **OK**.

Enabling Bluetooth Services

You can select to have certain services enabled:

- Automatically when Bluetooth is activated
- When you permit the connection
- When a passkey or link key is correctly entered

You can use any of these security options when transferring files, creating a serial port connection, exchanging business card information, configuring dial-up networking, joining a personal network, and connecting to a headset.

Automatically Enabling Services

You can allow devices to connect without any authorization. When Bluetooth is on, it is ready for connections.

To automatically enable services:

1. From the **Today** screen, tap the **Bluetooth** icon.
2. Tap the tab for the service you want to enable: **File Transfer, Information Exchange, Serial Port, Dial-up Networking, Audio Gateway, or Personal Network Server.**
3. Select **Enable service.**
4. Tap **OK.**

Requiring Authorization to Access Services

If you elect to require authorization to access services, you must authorize each connection. Your iPAQ h2200 Series will ask you if the connection should be permitted.

To require authorization to access services:

1. From the **Today** screen, tap the **Bluetooth** icon.
2. Tap the tab for the service you want to enable: **File Transfer, Information Exchange, Serial Port, Dial-up Networking, Audio Gateway, or Personal Network Server.**
3. Select **Authorization required.**
4. Tap **OK.**

Requiring a Passkey or Bond to Access Services

To establish a connection, the other device must have a passkey or an established bond for added security. You can add data encryption to this type of security.

A passkey is a code you enter to authenticate connections requested by other devices. The passkey must be known and used by both parties or the connection will not be allowed.

If...	Then...
Both devices successfully enter the known passkey	A bond is created between the devices. You do not have to enter the passkey again to exchange information.
You want to require a passkey exchange each time you transmit information	You must remove the bond ("Unpairing Devices") prior to establishing the connection.

To require a passkey or bond:

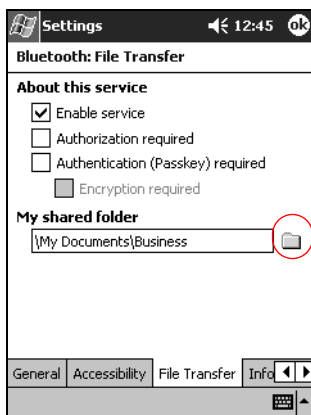
1. From the **Today** screen, tap the **Bluetooth** icon.
2. Tap the tab for the service you want to enable: **File Transfer**, **Information Exchange**, **Serial Port**, **Dial-up Networking**, **Audio Gateway**, or **Personal Network Server**.
3. Select **Authentication (Passkey) required**.
4. Select **Encryption Required** if you want to require all data exchanged between the devices to be encrypted.
5. Tap **OK**.

Setting a Shared Folder

You can determine the folder that other devices can access when they connect to your iPAQ h2200 Series.

To set a shared folder:

1. From the **Today** screen, tap the **Bluetooth** icon.
2. Tap the **File Transfer** tab.
3. Tap the **Folder** icon and locate a desired file folder.



4. Tap **OK**.

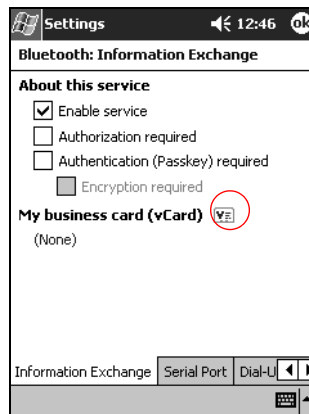
Selecting Business Card Information

Two Bluetooth devices can exchange business card information electronically. You can determine the information about you that is sent to another device upon request. This information comes from the Contacts list in Pocket Outlook.

The default selection is “None.”

To select business card information:

1. Create a contact in the **Contacts** application that includes your name, title, and other relevant information.
2. From the **Today** screen, tap the **Bluetooth** icon.
3. Tap the **Information Exchange** tab.
4. Tap the **Contacts** icon.



5. Choose your contact from the list.
6. Tap **OK**.

Connecting to Other Devices

Use ActiveSync, serial and dial-up connections to communicate with other Bluetooth devices. Establish a partnership with a cell phone and set up the Bluetooth services it offers.

Identifying the Communications Port

You can identify the virtual COM ports used to create a **serial port** connection. You may need to identify these COM ports for activities such as printing.

The inbound COM port is used when other devices initiate a serial connection. The outbound COM port is used when you initiate a serial connection to another device.

To identify the communications port:

1. From the **Today** screen, tap the **Bluetooth** icon.
2. Tap the **Serial Port** tab.
3. Note the names of your inbound and outbound COM ports.
4. Tap **OK**.

Establishing an ActiveSync Connection

You can set up an ActiveSync partnership with a Bluetooth enabled computer.

To establish an ActiveSync connection:

1. From the **Today** screen, tap **Start**.
2. Tap **Programs**, then **Bluetooth Manager**.
3. Tap **New**, then **Connect**.

4. Tap “ActiveSync via Bluetooth,” then tap **Next**.



5. Follow the Connection Wizard instructions.



Establishing a Serial Connection

Use the wireless Bluetooth serial port connection just as you would a physical serial cable connection. You must configure the application that will use the connection to the correct serial port.

To establish a serial connection:

1. From the **Today** screen, tap **Start**.
2. Tap **Programs**, then **Bluetooth Manager**.
3. Tap **New**, then **Connect**.
4. Tap “Explore a Bluetooth device,” then tap **Next**.
5. Follow the connection wizard instructions.

Using Dial-Up Networking

When using dial-up networking, the remote device providing the dial-up networking service, and the remote computer to which you are connecting must both have telephone access.

Devices that can provide dial-up networking include Bluetooth:

- Mobile phones
- Desktop computers
- Modems

Configuring Dial-Up Connections

To configure the dial-up networking settings:

1. From the **Today** screen, tap the **Bluetooth** icon.
2. Tap the **Dial-Up Networking** tab.
3. Select a communications port from the **COM Port** list.
4. Select a baud rate from the **Baud Rate** down arrow list (typical rate is 57600).
5. Select the type of flow control to use from the **Flow Control** down arrow list (typical setting is Hardware [RTS/CTS]).
6. Tap **OK**.

Using Dial-Up Networking

To connect to a device that provides telephone access:

1. From the **Today** screen, tap **Start**.
2. Tap **Programs**, then **Bluetooth Manager**.
3. Tap **New**, then **Connect**.
4. Tap “Connect to the Internet,” then tap **Next**.
5. Follow the connection wizard instructions.



Once you have created the dial-up networking shortcut with a device, tap and hold the shortcut icon in the **My Shortcuts** tab of the **Bluetooth Manager**, then tap **Connect**.

6. Tap **New Connection**.
7. Tap **OK**.
8. Enter a name in the **Connection Name** field.
9. Enter a phone number. You have to enter the country code and area code depending on where you are calling.
10. Tap **OK** to begin dialing.



Some mobile phones require a bond between device (see the section “Pairing Devices”).

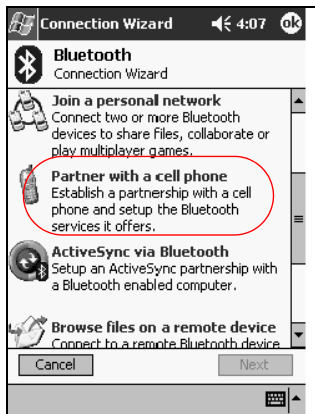
Establishing a Cell Phone Partnership

You can establish a partnership with a cell phone, then setup the Bluetooth services it offers.

To establish a cell phone partnership:

1. From the **Today** screen, tap **Start**.
2. Tap **Programs**, then **Bluetooth Manager**.

3. Tap **New**, then **Connect**.
4. Tap “Partner with a cell phone,” then tap **Next**.



5. Follow the Connection Wizard instructions.



Working with Files

You can exchange information with a connected device. You can use the Bluetooth File Explorer to:

- Navigate through the directories
- View files and folders
- Create new folders
- Send and receive files from a remote device
- Delete and rename files on a remote device

Creating a File Transfer Connection

1. From the **Today** screen, tap **Start**.
2. Tap **Programs**, then **Bluetooth Manager**.
3. Tap **New**, then **Connect**.
4. Tap “Browse files on a remote device,” then tap **Next**.
5. Follow the Connection Wizard instructions.

Sending Files

1. Tap and hold a file transfer shortcut icon, then tap **Connect**.
2. Tap **File**, then Tap **Send a File... .**
3. Locate a file to send.
4. Tap the file to automatically send it.
5. Tap **OK**.

Creating a Folder on a Remote Device

1. Tap and hold a file transfer shortcut icon, then tap **Connect**.
2. Navigate to the location you want for the new folder.
3. Tap **File**, then **Create a folder**.
4. Enter a folder name while **New Folder** is highlighted, then tap **Enter**.
5. Tap **OK**.

Receiving a File from a Remote Device

1. Tap and hold a file transfer shortcut icon, then tap **Connect**.
2. Navigate to the file location on the remote device.
3. Tap the file.
4. Tap **File**, then tap **Get**.
5. Tap **OK**.

Deleting a File from a Remote Device

1. Tap and hold a file transfer shortcut icon, then tap **Connect**.
2. Navigate to the file location on the remote device.
3. Tap the file.
4. Tap **File**, then tap **Delete**.
5. Tap **Yes** to verify you want to delete the selected file.
6. Tap **OK**.

Sending Information via Bluetooth

Use Pocket Outlook to send contacts, calendar information, and tasks to a remote device using Bluetooth.

To send information using Bluetooth:

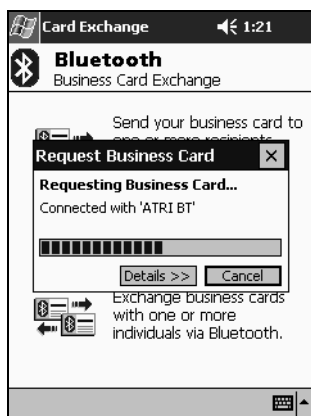
1. Open the Calendar, Contacts, or Tasks application from the **Start** menu or tap **Start**, then **Programs**.
2. Tap and hold the item to send, then select "Send via Bluetooth."
3. Tap the name of destination device.
4. Tap **OK**.

Using Business Cards

Using the business card exchange, you can:

- Send a business card to one or more devices
- Request a business card from one or more devices
- Exchange business cards with one or more devices

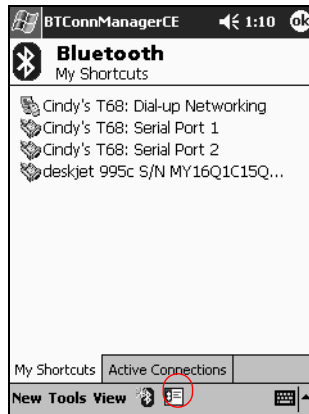
You must establish a default contact name to send or exchange business card information.



You must first specify your default business card on the **Information Exchange** tab in **Bluetooth Settings**. This name becomes the default for business card transfers.

Sending Business Cards

1. From the **Today** screen, tap **Start**.
2. Tap **Programs**, then **Bluetooth Manager**.
3. Tap the **Business card** icon.



You can open the business card exchange by tapping **Tools, Business Card Exchange** in the **Bluetooth Manager**.

4. Tap the **Send** icon.
5. Tap the device where you want to send your business card.
6. Tap **OK**.

Requesting Business Cards

1. From the **Today** screen, tap **Start**.
2. Tap **Programs**, then **Bluetooth Manager**.
3. Tap the **Business card** icon.
4. Tap the **Request** icon.
5. Tap the device you want to request a business card.
6. Tap **OK**.

Exchanging Business Cards

You can exchange business card information with another device. If available, the device's information will be sent directly into your **Contacts** list in **Pocket Outlook**.

To exchange business cards:

1. From the **Today** screen, tap **Start**.
2. Tap **Programs**, then **Bluetooth Manager**.
3. Tap the **Business card** icon.
4. Tap the **Exchange** icon.
5. Tap the device where you want to exchange your business card.
6. Tap **OK**.

Working with Connections

You can create shortcuts to open and view status information for all connections.

Creating a Shortcut

Creating a shortcut to one or more services does not establish a connection. It only places a shortcut to that service on the **Shortcut** tab of the **Bluetooth Manager**.

To create a shortcut:

1. From the **Today** screen, tap **Start**.
2. Tap **Programs**, then **Bluetooth Manager**.
3. Tap **New**, then **Connect**.
4. Select a type of service, then tap **Next**.
5. Follow the connection wizard instructions.



Paired devices are designated by a checkmark.

Deleting a Shortcut

1. From the **Today** screen, tap **Start**.
2. Tap **Programs**, then **Bluetooth Manager**.
3. Tap and hold the connection icon or list name to be deleted.
4. Tap **Delete** from the menu.
5. Tap **Yes** to verify the selected shortcut should be deleted.
6. Tap **OK**.

Viewing Shortcuts

You can view shortcuts as icons or in a list format.

1. From the **Today** screen, tap **Start**.
2. Tap **Programs**, then **Bluetooth Manager**.
3. Tap **View**.
4. Tap **List** or **Icon**.
5. Tap **OK**.

Opening a Connection

1. From the **Today** screen, tap **Start**.
2. Tap **Programs**, then **Bluetooth Manager**.
3. Tap and hold the icon or list name, then tap **Connect**.
4. Tap **OK**.

Viewing Connection Status

You can view:

- Connection's name
- Device's name
- Connection status
- Length of connection
- Signal strength

To view the connection status:

1. From the **Today** screen, tap **Start**.
2. Tap **Programs**, then **Bluetooth Manager**.
3. Tap and hold an active connection icon or list name, then tap **Status**.
4. Tap **OK**.

Closing a Connection

1. From the **Today** screen, tap **Start**.
2. Tap **Programs**, then **Bluetooth Manager**.
3. Tap and hold the connection icon or list name.
4. Tap **Disconnect** from the menu.
5. Tap **OK**.

Viewing Connection Information

1. From the **Today** screen, tap **Start**.
2. Tap **Programs**, then **Bluetooth Manager**.
3. Tap and hold the connection icon or list name.
4. Tap **Properties** from the menu.
5. Tap **OK**.

Scheduling

The iPAQ h2200 Series can help you keep track of your schedule by using it to:

- See information at a glance on the Today screen
- Set appointments and create reminders with the Calendar
- Create a task list

Using the Today Screen

When you first turn on your iPAQ h2200 Series, the **Today** screen displays. Use the **Today** screen to view:


- Owner information
- Upcoming appointments
- Unread and unsent messages
- Tasks that need to be completed

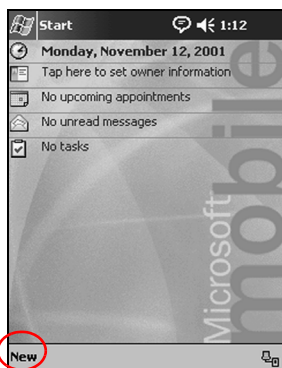
Creating information

From the **Today** screen, create new information, including:

- Appointments
- Contacts
- E-mail
- Excel Workbook Information

- Notes
- Tasks
- Word documents

1. Tap , or from the **Start** menu, tap **Today**.
2. Tap **New**.



3. Tap an option to create a new item.
4. Tap **OK** when finished creating new item.

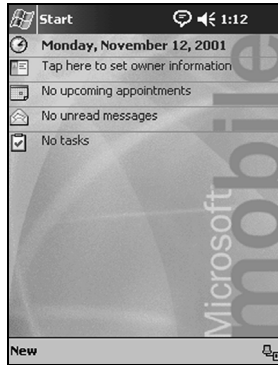
Changing information

From the Today screen, you can change:

- Owner information
- Upcoming appointments
- Unread and unsent messages
- Tasks that need to be completed

For more information on changing these items, see the appropriate instructions for each task in this guide. For example, to create a new appointment, see the “Scheduling Appointments” later in this guide.

1. From the **Start** menu, tap **Today**.
2. Tap the information you want to change.



3. Enter or change the information.
4. Tap **OK** to save changes and return to the **Today** screen.

Changing Settings

From the **Today Settings** screen, you can:

- Add a picture as the background
- Select the information you see
- Set the order of the information
- Decide when to see the **Today** screen

1. From the **Start** menu, tap **Settings > Today**.