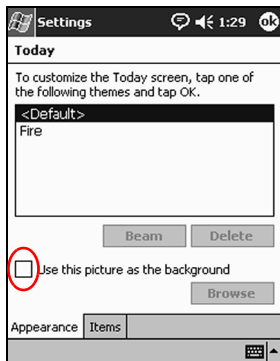
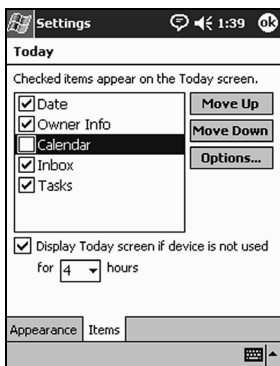


2. Select “Use this picture as the background” check box.



3. Tap **Browse** to select a picture from File Explorer.
4. Tap the **Items** tab to select or reorder the information on the **Today** screen.
5. Tap an item to highlight it.



6. Tap **Move Up** or **Move Down** to change the order of items on the **Today** screen.



You cannot change the placement of the **Date** on the **Today** screen.

7. Tap the down arrow associated with “Display Today screen if device is not used for...hours” check box to determine how many hours must pass before the **Today** screen displays.
8. Tap **OK**.

Using the Calendar

Use the Calendar to schedule appointments and set reminders.
View your calendar by:

- Agenda
- Day
- Week
- Month
- Year

Keep the amount of information in your appointments small in order to conserve memory.

Shortcut: Press the **Calendar** application button on the **Today** screen to navigate quickly to Calendar.

Looking at the Calendar

By default, the Calendar first appears in the **Agenda** view. The **Agenda** view provides the most detail about your appointments.

From the **Start** menu, tap **Calendar** to view your appointments.

Changing the Calendar View

By default, the Calendar first appears in the **Agenda** view, which provides the most detail about your appointment. You can also view your calendar by:

- Day
- Week
- Month
- Year

1. From the **Start** menu, tap **Calendar**.
2. Tap the **Agenda, Day, Week, Month,** or **Year** icon to see your calendar in that view.

Customizing the Calendar Appearance

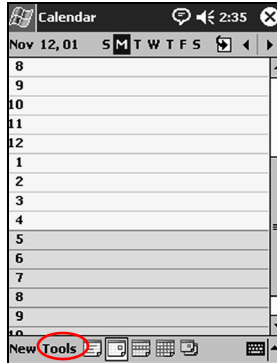
Change the appearance of your calendar by setting the 1st day of the week, deciding how many days in a week you want to view, showing the number of weeks and the half-hour time slots, deciding to use a large font, and deciding to set reminders for new items. You can also display several icons that give visual information about your appointments, including:

- Reminder
- Recurrence
- Note
- Location
- Attendees
- Private

You can determine whether to send meeting requests through ActiveSync 3.5 or an e-mail service.

1. From the **Start** menu, tap **Calendar**.

2. Tap **Tools**.



3. Tap **Options**.

4. Select the calendar options.

5. Tap **OK**.

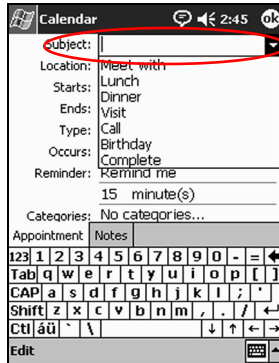
Scheduling Appointments

Keep the amount of information in your appointments small to conserve memory.

Shortcut: You can schedule an appointment and set a reminder from the **Today** screen.

1. From the **Start** menu, tap **Calendar**.
2. Tap **New** to schedule an appointment.

3. Enter a subject or select from the **Subject** drop-down list.

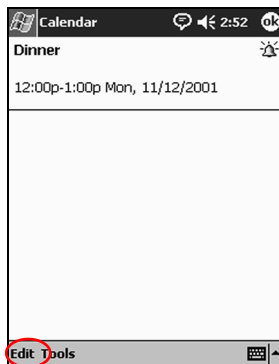


4. Tap any item to enter additional information.
5. Tap **OK** to schedule the appointment.

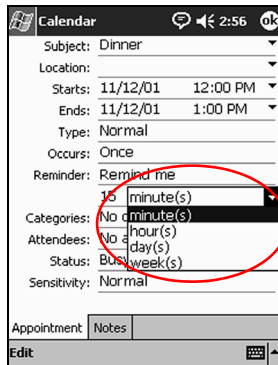
Creating Reminders

You can create a reminder when you are scheduling an appointment or you can do it at a later date.

1. From the **Start** menu, tap **Calendar**.
2. Tap an appointment.
3. Tap **Edit**.



4. Tap the second **Reminder** field to select the time interval between reminders. The default is 15 minutes.



Deleting Appointments

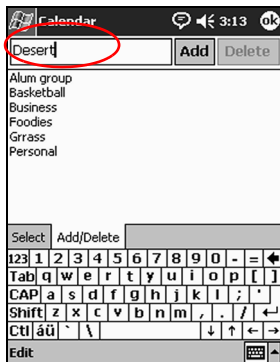
1. From the **Start** menu, tap **Calendar**.
2. Tap an appointment.
3. Tap **Tools**.
4. Tap **Delete Appointment**.
5. Tap **Yes** to confirm deletion.

Categorizing Appointments

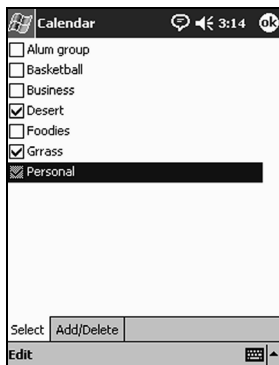
Use categories to filter the appointments in your calendar.

1. From the **Start** menu, tap **Calendar**.
2. Tap an appointment.
3. Tap **Edit**.
4. Tap the **Categories** field to see a list of available categories.
5. Tap **Add/Delete** to create a category.

6. Enter the name of the new category.



7. Tap **Add**.
8. Tap **OK** to place your appointment in the category.
9. Tap the **Categories** field to place your appointment in more categories.
10. Tap additional category names to select them.



11. Tap **OK** to list the categories you selected in the **Categories** field.
12. Tap **OK** to save the category information and return to the **Calendar** screen.

Requesting Meetings

You can schedule a meeting and send a meeting request through ActiveSync or an e-mail service.

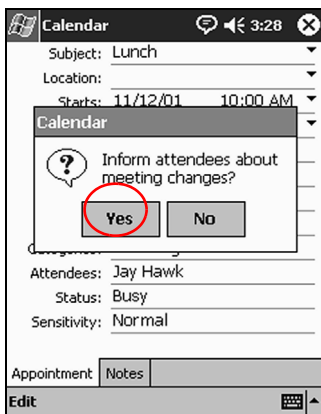


You must enter contacts with e-mail addresses in the Contacts application and set up the Inbox application to send and receive e-mail before you can send a meeting request.

To request a meeting:

1. From the **Start** menu, tap **Calendar > Tools > Options**.
2. Tap the “Send meeting requests via” down arrow.
3. Tap the e-mail service you want to use to send a meeting request, then tap **OK**.
4. Tap **New** to create a new appointment.
5. Enter the information.
6. Tap the **Attendees** field.
7. Tap the contacts you want to invite to the meeting.
8. Tap **OK** to add the attendees.
9. Tap **OK** to schedule the meeting.

10. Tap **Yes** to inform attendees about the meeting.



Using Tasks

You can use Tasks to:

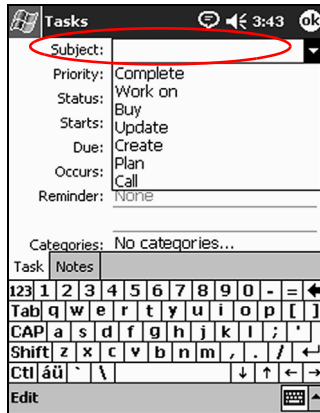
- Create new tasks
- Set a reminder for a task
- Delete a task
- Sort your task list by category, status, priority, subject, start date, and due date

Creating a Task

To create a task from the **Today** screen.

1. From the **Start** menu, tap **Tasks**.
2. Tap **New** to create a new task.

3. Enter a subject or select from the **Subject** drop-down list.



4. Tap any item to enter additional information.
5. Tap **Due** to add a due date for the task.
6. Tap **Reminder**, then select “Remind me.”
7. Tap the date to select when you want to be reminded.
8. Tap **OK** to set the reminder and create the task.

Creating a Task Quickly

Create a task quickly by customizing Tasks, so you see an **Entry Bar** at the top of the **Tasks** screen.

1. From the **Start** menu, tap **Tasks > Tools > Entry Bar**.
2. Enter the subject.
3. Set a priority:
 - a. For high priority, tap the **exclamation point**.
 - b. For low priority tap the **down arrow** icon.
 - c. For normal priority, do not tap an icon.

4. Tap outside the **Entry Bar** to add the task to your task list.



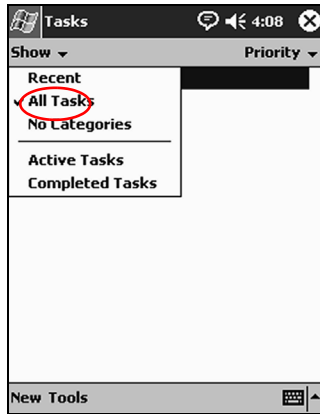
Deleting a Task

1. From the **Start** menu, tap **Tasks**.
2. Tap the task you want to delete.
3. Tap **Tools**.
4. Tap **Delete Task**.
5. Tap **Yes** to permanently delete the task.

Sorting Tasks

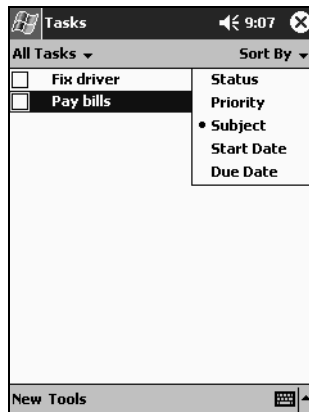
1. From the **Start** menu, tap **Tasks**.
2. Tap the down arrow at the top left of the screen to sort the task list by category.

3. Select a category.



4. Tap the down arrow at the top right of the screen to sort the task list by status, priority, subject, start date, or due date.

5. Select a sort option.



Changing the Appearance of Tasks

You can change the appearance of Tasks to use a large font, show the start and end dates, and set reminders for new items.

1. From the **Start** menu, tap **Tasks > Tools > Options**.
2. Select the **Tasks** options.
3. Tap **OK**.

Using the Software

Use the software applications on your HP iPAQ h2200 Series to:

- Open or create Word documents
- Open or create Excel workbooks
- Use Audio Player
- Use Pocket Internet Explorer
- Use Windows Media Player
- Read eBooks with Microsoft Reader

Using Pocket Word

Use Pocket Word to create new Word documents from your iPAQ h2200 Series or to synchronize existing Word documents from your computer to your iPAQ h2200 Series.

Microsoft ActiveSync converts Word documents into the Pocket Word format and changes the .doc extension to a .psw extension.



CAUTION: Because Microsoft ActiveSync converts Word documents into the Pocket Word format, you may lose some formatting from the original Word document.

Pocket Word does not support the following items:

- Columns
- Numbered lists
- Headers and footers
- Footnotes
- Style sheets



For more help with Pocket Word, tap **Help** from the **Start** menu, then tap **Pocket Word**.

Use ActiveSync to move existing Word documents to your iPAQ h2200 Series, convert them automatically to the Pocket Word format, and open them. Pocket Word recognizes and displays documents in one folder below My Documents.

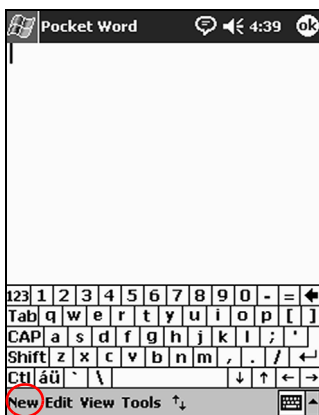
For example, if you created another folder in the Personal folder in My Documents, the documents in that folder will not be shown.

Creating a Word Document

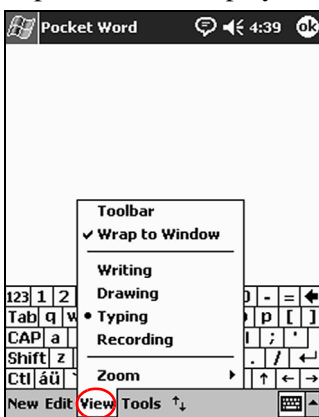
To create a new document from the **Today** screen:

1. From the **Start** menu, tap **Programs > Pocket Word**.

2. Tap **New** to create a new document.



3. Tap **View**, then tap **Toolbar** to display the format toolbar.

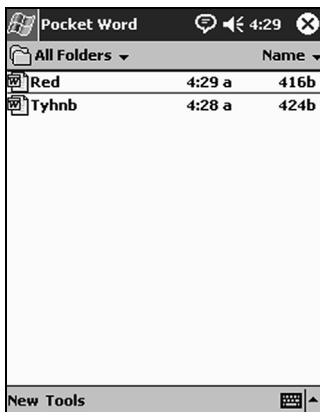


4. Tap **OK** to close and save the document.

The document is automatically saved as a Pocket Word Document with the first few words of your text as its name. You may want to rename it.

Opening a Word Document

1. From the **Start** menu, tap **Programs > Pocket Word**.
2. Tap a document to open it.



Changing Pocket Word options

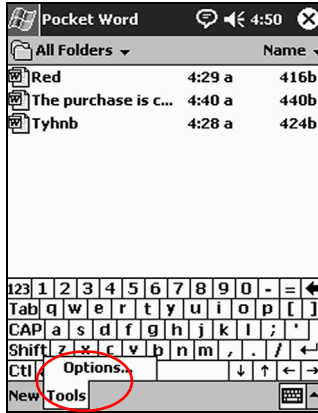
You can select:

- A default template
- Whether documents are stored in main memory or on a memory card
- Which types of documents are displayed in the list view

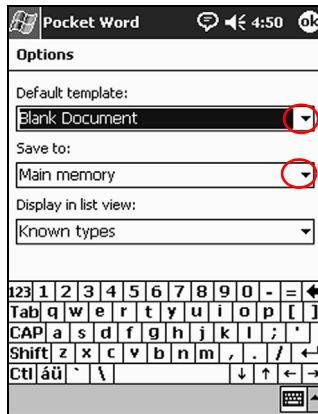
To change Pocket Word options:

1. From the **Start** menu, tap **Programs > Pocket Word**.

2. Tap **Tools**, then **Options**.

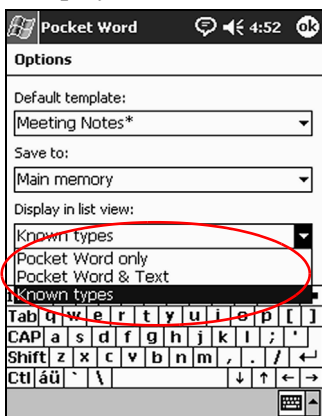


3. Tap the **Default template** down arrow to select a default template.



4. Tap the **Save to** down arrow to store documents in main memory or on a memory card.

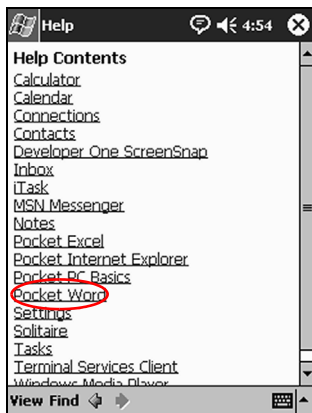
5. Tap the **Display in list view** down arrow to select which types of documents to display in the list view.



6. Tap **OK** to save the options.

Finding more Help for Pocket Word

1. From the **Start** menu, tap **Help**.
2. Tap **Pocket Word**.



Using Pocket Excel

Create Excel workbooks from your iPAQ h2200 Series or synchronize existing Excel workbooks from your computer to your iPAQ h2200 Series. ActiveSync converts Excel workbooks into the Pocket Excel format and changes the .xls extension to a .pxl extension.



CAUTION: Because ActiveSync converts Excel workbooks into the Pocket Excel format, you may lose some formatting from the original Excel workbook.

Pocket Excel does not support the following items:

- Data validation
- Cell notes
- Add-ins
- Protection
- Scenarios
- Object charts
- Vertical alignment
- Text boxes
- Embedded OLE objects
- Hyperlinks



For more help with Pocket Excel, tap **Help** from the **Start** menu, and tap **Pocket Excel**.

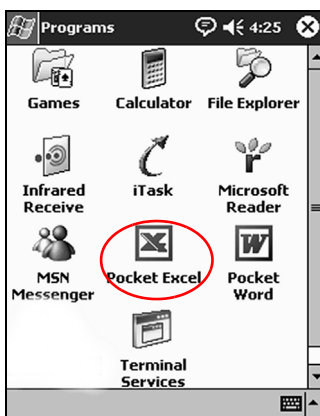
Creating a Workbook



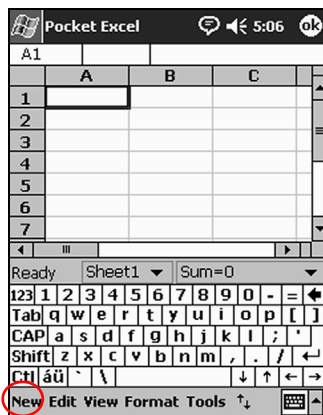
You can create a new workbook from the **Today** screen by tapping **New**.

To create a new workbook:

1. From the **Start** menu, tap **Programs > Pocket Excel**.



2. Tap **New** to create a new workbook.



3. Tap **OK** to close and save the workbook.

The workbook is automatically saved as a Pocket Excel workbook named Book1. Depending on how many workbooks you have created since opening Pocket Excel, you may want to rename it.

Opening a Document



CAUTION: Pocket Excel only recognizes and displays documents saved in the My Documents folder or one folder below it. Files saved elsewhere cannot be displayed.

To open an Excel file:

1. From the **Start** menu, tap **Programs > Pocket Excel**.
2. Tap a workbook to open it.

Changing Excel Options

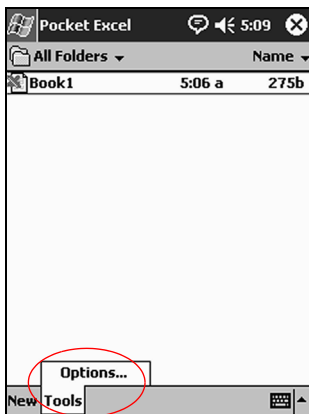
You can change options to select:

- A template for new workbooks
- Whether workbooks are stored in main memory or on a memory card
- Which types of workbooks are displayed in the list view

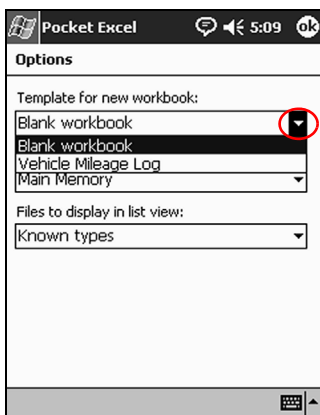
To change Excel options:

1. From the **Start** menu, tap **Programs > Pocket Excel**.

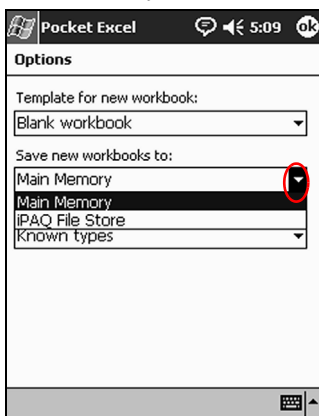
2. Tap **Tools**, then **Options**.



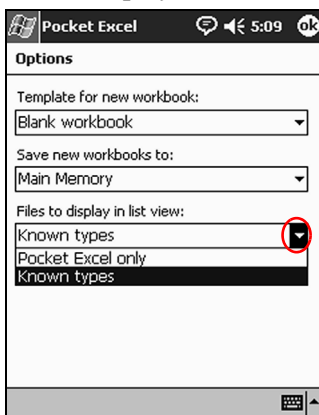
3. Tap the **Template for new workbook** down arrow to select a template.



4. Tap the **Save new workbooks to** down arrow to store workbooks in main memory or on a memory card.



5. Tap the **Files to display in list view** down arrow to select which workbooks are displayed in the list view.



6. Tap **OK** to save the options.

Using Audio Player

Use Audio Player to listen to music by downloading files to your iPAQ h2200 Series. You can download files to your personal computer and transfer them to your iPAQ h2200 Series, or download them directly to your iPAQ h2200 Series using your Bluetooth wireless LAN connection.



Some Internet music files are protected by licensing technology. Audio Player uses **Digital Rights Management (DRM)** for the electronic licensing procedure. Audio Player and **Windows Media Rights Manager must be installed on the personal computer** and are available on **XXXX's** Web site.

Copying Music to Your iPAQ h2200 Series

NEED MORE INFO WHENEVER THE SOFTWARE BECOMES AVAILABLE

Using Windows Media Player

Use Windows Media Player to listen to music or play video by downloading files to your iPAQ h2200 Series.

You can download files:

- To your personal computer and transfer them to your iPAQ h2200 Series, or
- Directly to your iPAQ h2200 Series using your Bluetooth wireless LAN connection



Windows Media Play is included on the *HP iPAQ h2200 Series Companion CD* and must be installed on your h2200 Series before it can be used.



For more information on Windows Media Player, tap **Help** from the **Start** menu, then tap **Windows Media Player**.

Media Player supports the organization and playback of:

- Windows Media content
- MP3 audio files
- Windows Media audio and video
- FhG MP3
- Streamed content in Windows Media format using WM protocols (HTTP and MMS)

(MEDIA PLAYER SCREEN ON HAMMER HAS MUTE BUTTON)





Some Internet music files are protected by licensing technology. Windows Media Player uses Digital Rights Management (DRM) for the electronic licensing procedure. Windows Media Player and Windows Media Rights Manager must be installed on the personal computer and are available on Microsoft's Web site.

Copying Music to Your iPAQ h2200 Series

You can copy music that is in one of the accepted formats from your personal computer to the iPAQ h2200 Series. Drag and drop the music file into the My Documents folder located in RAM or on a storage card.

To copy music from an audio CD to your iPAQ h2200 Series, you must have Windows Media Player or similar software installed on your personal computer.

To copy music to your iPAQ h2200 Series:



The actual steps for copying music using the Windows Media Player may vary depending on the version of Media Player on the personal computer.

1. Connect your iPAQ h2200 Series to your personal computer.
2. Open Windows Media Player on your personal computer.
3. Insert the audio CD into your CD drive.
4. From Media Player on your personal computer, select **CD Audio** to display the tracks on the audio CD.
5. Select the tracks to copy and select **Copy Music** to transfer the tracks to the hard drive.
6. From Media Player on your personal computer, select **Portable Device** to display the tracks on the hard drive and the files on the iPAQ h2200 Series.

7. Select the tracks to copy and the storage location on the iPAQ h2200 Series and select **Copy Music** to transfer the tracks.



Music files can be relatively large. It is recommended that you store your music files on a storage card.

Playing Music on Your iPAQ h2200 Series

1. Tap **Start**, then **Windows Media**.
2. Tap **Select**.
3. Tap the down arrow and **Local Content** to display media files stored on the iPAQ h2200 Series.



4. Tap and highlight the desired file.
5. Tap the **Play** icon.



By default, Media Player will play all files stored as local content on the iPAQ h2200 Series. You can repeat a file and shuffle the contents by selecting **Tools**, then **Repeat** or **Shuffle**.

Creating Playlists

You can organize music and video files into playlists.

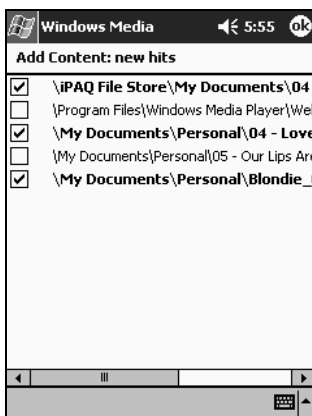
To create a playlist:

1. Tap **Start**, then **Windows Media**.
2. Tap **Select**.
3. Tap the down arrow, then **Organize Playlists**.



4. Tap **New** to name your playlist, then tap **OK**.

5. Select the files to include in this playlist.



6. Tap **OK** to display your new playlist.
7. Tap **OK**.

Playing a Playlist

1. Tap **Start > Windows Media > Select**.
2. Tap the down arrow and tap the playlist name to display its contents.

3. Tap **OK**, then the **Play** icon to start the playlist.



You can delete and rename playlists by using the **Organize Playlists** menu option. You can also edit playlists by using the **Edit** icon while viewing a playlist.

Playing Video

You can play and manage video files just like music. You must have an internet connection to play streaming video.

Using Pocket Internet Explorer

Use Pocket Internet Explorer (Pocket IE) to view Web or WAP pages on your iPAQ h2200 Series by downloading pages while connected to the Internet through ActiveSync.



For more information, tap **Start > Help**, then **Pocket Internet Explorer**.

Using Pocket IE When Connected

Use Pocket IE to browse when connected to the Internet.

1. Tap **Start > Internet Explorer**.



You can use the pre-installed links that HP has provided to access content and services that are optimized for the iPAQ h2200 Series.

2. Enter the URL address in the address bar at the top of the screen. If you do not see the address bar, tap **View**, then tap **Address Bar**.
3. Tap **Go**.

Using Pocket IE When Disconnected

With Pocket IE, you can browse previously viewed and stored information when disconnected from the Internet. This information can be viewed using the cached content or through synchronization.

To view the cached content:

1. Tap **Start > Internet Explorer**.
2. Tap **Tools**, then **Options**.
3. In the **General** tab, select the number of days to save the history of pages visited.
4. Tap **OK**.

Using Microsoft Reader

Use Microsoft Reader to read and listen to eBooks from your iPAQ h2200 by downloading files to your personal computer and transferring them to your h2200 Series.



Microsoft Reader must be downloaded from the Web using a link included on the *HP iPAQ h2200 Series Companion CD*. After downloading it, Microsoft Reader must be activated before you can copy protected eBooks from the Internet. To activate Reader, you must have a Hotmail, Microsoft Net, or Passport account.

Microsoft Reader may not be available in your country.



A detailed eBook guide is available in some countries on the CD, and you can also copy it to your iPAQ h2200 Series.

Activating Microsoft Reader

To activate Microsoft Reader to copy protected eBooks:

1. Connect your iPAQ h2200 Series to your computer.
2. Open **Internet Explorer** on your computer.
3. Go to <http://das.microsoft.com/activate>.
4. Enter your e-mail address and sign in to Microsoft Passport.

Copying eBooks

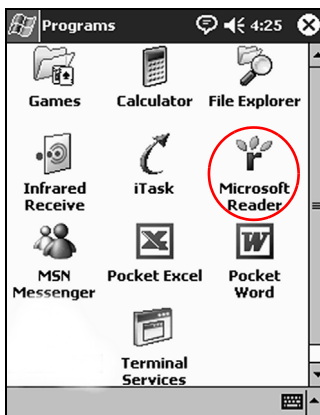
You can copy eBooks from any eBook retailer to your iPAQ h2200 Series.

1. Connect your iPAQ h2200 Series to your computer.
2. Go to any eBook retailer's Web site and follow the directions for downloading or installing files to your iPAQ h2200 Series.

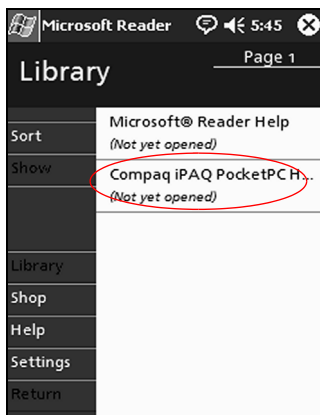
Reading an eBook

Read your eBook from start to finish or select specific topics. If you close your eBook and later want to open it, your ebook will open on the last page you read.

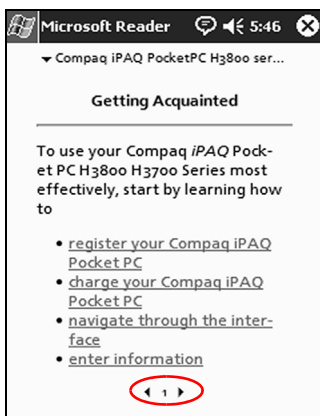
1. From the **Start** menu, tap **Programs > Microsoft Reader**.



2. Tap the title of your eBook (**NEED NEW SCREENSHOT**).



3. Tap the page number or left and right arrows to move backward and forward in the book. (NEW SCREENSHOT)



To jump to a topic, tap a link. Links can occur throughout the text or table of contents. To return from a link, tap the title of the eBook, then tap **Return**.

Listening to an eBook

You can listen to an Audible eBook on your iPAQ h2200 Series. For more information on buying and listening to Audible eBooks, go to <<http://www.audible.com>>.

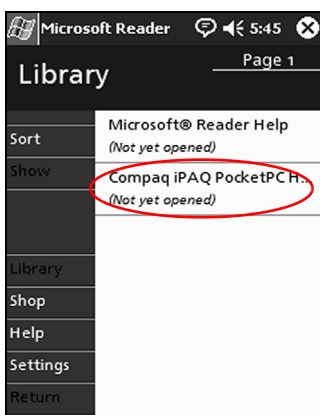
1. From the **Start** menu, tap **Programs > Microsoft Reader**.
2. Tap the title.
3. Tap **Play** to listen to the book.
4. Tap **Stop** to quit listening to the book.

Annotating your eBook

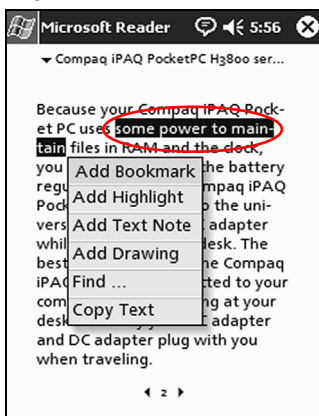
Annotate your eBook text by:

- Creating Bookmarks
- Highlighting Words Or Phrases
- Attaching Notes
- Creating drawings

1. From the **Start** menu, tap **Programs > Microsoft Reader**.
2. Tap the title.



3. Highlight and hold the text where you want to create a bookmark, highlight, attach a note, or create a drawing.



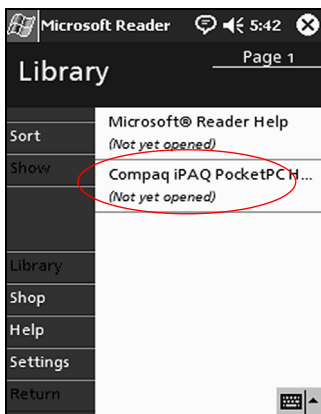
4. Tap **Add Bookmark**, **Add Highlight**, **Add Text Note**, or **Add Drawing** from the pop-up menu.

Deleting eBooks

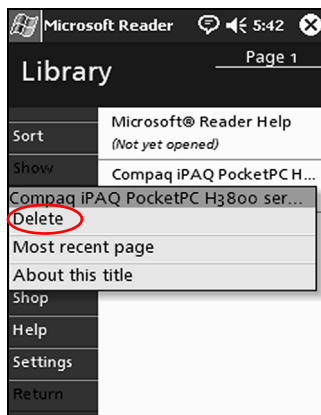
You can delete an eBook from your iPAQ h2200 Series library. If your eBook is stored on your computer, you can copy it again to your iPAQ h2200 unit.

1. From the **Start** menu, tap **Programs > Microsoft Reader**.

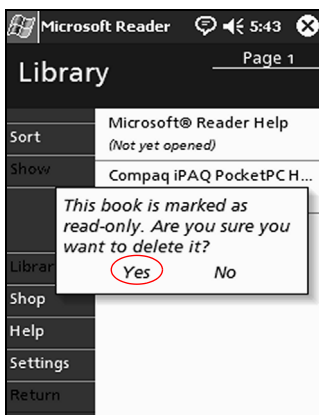
2. Tap and hold the title of your eBook.



3. Tap Delete.



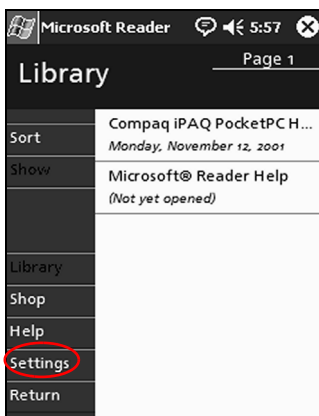
4. Tap **Yes**.



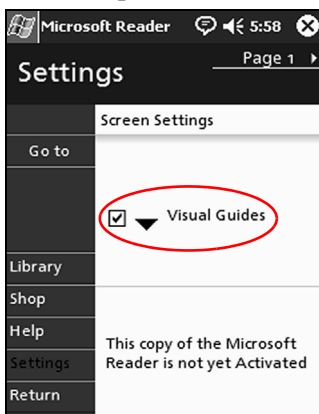
Changing Microsoft Reader options

Customize Microsoft Reader to meet your individual needs. Choose to see visual guides, allow annotations (bookmarks, text notes, drawings, or highlights), or adjust the size of the font.

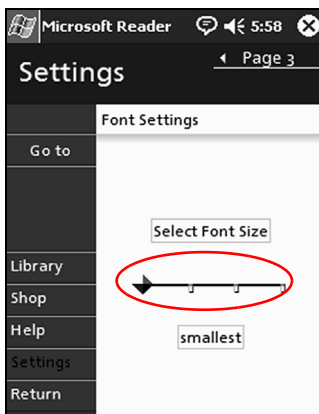
1. From the **Start** menu, tap **Programs > Microsoft Reader**.
2. Tap **Settings**.



3. Tap the **Visual Guides** option.



4. Tap **Page 1**.
5. Select the **Annotations** options.
6. Tap **Page 2**.
7. Tap and drag the cursor along the ruler to adjust the font size.



8. Tap **Library** to return to the list of eBooks.



Expansion Cards

Expansion cards expand the memory and connectivity of your iPAQ h2200 Series Pocket PC with the following options:

- View the content of memory cards
- Connect wirelessly using the optional 802.11 card
- Connect to the Internet or to your network using an optional modem card
- Add functionality such as a wireless modem connection, digital camera, or expand the memory of your iPAQ h2200 Series by using an optional CompactFlash (CF) card
- Expand the memory of your iPAQ h2200 Series by using an optional Secure Digital (SD) Card



To prevent power loss to the battery, remove any expansion cards from either the CD or SD expansion slots before turning off power to the h2200 Series.

If you would like...	Then install the...
Wireless connectivity	802.11 card
To increase memory	SD or CF memory card
Modem connectivity	Modem or CF modem card



Several vendors manufacture memory and connectivity cards that are compatible with the Secure Digital and CompactFlash Expansion slots on the h2200 Series.

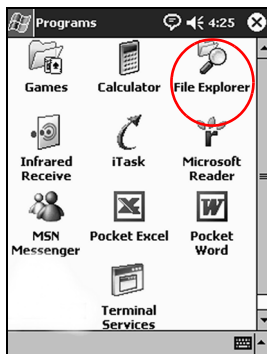
To see a list of compatible PC cards, go to:

www.hp.com/products/pocketpc/options

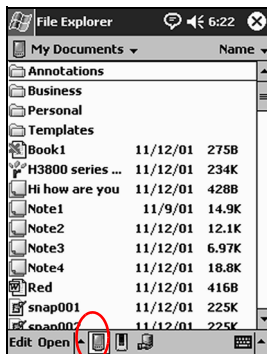
Viewing the Content of Memory Cards

Use File Explorer to view the files that are located on your optional CompactFlash or Secure Digital cards.

1. From the **Start** menu, tap **Programs > File Explorer**.



2. Tap the **Storage Card** icon to see a list of files and folders.



Wireless Connection with an Optional 802.11 CF or SD Card

Use an optional 802.11 CompactFlash (CF) or Secure Digital (SD) card to connect wirelessly to the Internet or to a network with your iPAQ h2200 Series.

Installing an 802.11 CF or SD Card



Before inserting a CompactFlash (CF) card into the CF expansion slot, remove the plastic cover from the CF slot by pulling it out. Remember to replace the plastic cover after removing the CF card from the slot.

Insert an 802.11 CF or SD card into the appropriate expansion slot on the top of the h2200 Series. Push the connection edge of the card firmly into the expansion slot.



If your 802.11 card is not recognized, follow the manufacturer's instructions to install the driver.

Removing an 802.11 CF or SD card

1. Close all applications using the 802.11 CF or SD card.
2. To remove the 802.11 CF card, push the eject finger slot on the CF expansion slot.
To remove the 802.11 SD card, push in the SD slot.
3. Pull the 802.11 card from the expansion slot.
4. If you removed a CF card from the slot, remember to replace the CF expansion slot plastic cover.

Finding Information

To locate information about 802.11 cards, visit the following HP Web site:

www.hp.com/products/pocketpc/options

Using an Optional Modem Card

If you use an optional modem card to connect your iPAQ h2200 Series to the Internet or a network, you must connect with a cable rather than through a wireless connection.

Installing a Modem Card



Remove the plastic cover from the CF expansion slot before inserting any cards into the CF slot.

Insert the modem card into the CF expansion slot in the top of the h2200 Series unit. Push the connection edge of the card firmly into the expansion slot.



If your modem card is not recognized, follow the manufacturer's instructions to install the driver.

Removing a Modem Card

1. Close all applications using the modem card.
2. Push the CF finger slot.
3. Pull the modem card from the expansion slot.
4. Replace the plastic cover by inserting it into the CF expansion slot.

Finding information about modem cards

To locate information about modem cards, visit the following HP Web site:

www.hp.com/products/pocketpc/options

Using an Optional CF Card

Use an optional CF card to:

- Create a modem connection with a CF modem card, which requires a phone line and a dial-up Internet Service Provider
- Increase the memory capacity of your iPAQ h2200 Series with a CF memory card

With a CF card, you must connect to the Internet with a cable (Ethernet or phone line).

Inserting a CF Card

1. Locate the CF expansion slot on top of the h2200 Series and remove the plastic cover from the CF expansion slot.
2. Insert the CF card into the CF expansion slot on top of the h2200 Series.
3. Push the connection edge of the card firmly into the expansion slot.

Removing a CF card

1. Close all applications using the CF card.
2. Pull the CF card from the expansion slot.
3. Replace the plastic cover by inserting it into the CF slot.

Finding information

To locate information about CF cards, visit the following HP Web site:

www.hp.com/products/pocketpc/options

Using an Optional SD Memory Card

Use an optional SD memory card to increase the memory capacity of your iPAQ h2200 Series.



CAUTION: Install the SD card only into the SD expansion slot on the iPAQ h2200 Series. You cannot install this card into the CompactFlash expansion slot.

Installing an SD Card

1. Locate the SD expansion slot on your iPAQ h2200 Series.
2. Insert an SD memory card into the SD expansion slot.
3. Push the connection edge of the card firmly into the expansion slot until it clicks into place or is flush with the top of the slot.

Removing an SD Card

1. Close all applications and files using the SD memory card.
2. Push down on the SD memory card.
3. Pull the SD memory card from the slot.

Finding information

To locate information about SD memory cards, visit the following HP Web site:

www.hp.com/products/pocketpc/options

Troubleshooting

Use the following suggestions to troubleshoot problems with the HP iPAQ h2200 Series.

The symptom or situation is...	Suggestion
I cannot see anything on the screen.	<ul style="list-style-type: none"> • Make sure the iPAQ h2200 Series is powered on. • Make sure the iPAQ h2200 Series is connected to the AC adapter and the cradle.
I cannot keep my battery charged.	<ul style="list-style-type: none"> • Always keep the iPAQ h2200 Series connected to the AC adapter when you are not using it. • In the backlight settings, slide the bar to the lowest level to conserve the most power.
The backlight keeps turning off.	Change the time the backlight stays on and select the option to turn on the backlight when you touch the screen or push a button.

The symptom or situation is...

Suggestion (Continued)

I cannot connect to my computer using the cable or the cradle.

- Make sure you have installed Microsoft ActiveSync on your host computer before connecting your iPAQ h2200 Series to it.
- Make sure your iPAQ h2200 Series is connected to the sync cable or inserted in the sync cradle, and that the sync cable or cradle is connected to your computer.
- Make sure your iPAQ h2200 Series is securely seated in the cradle and is making contact with the cradle connector.
- If you are using a serial cable, make sure it is plugged into the COM port on your host computer.
- If you are using a USB cable, make sure you are running Microsoft Windows 98SE, Me, or 2000 and that you have installed Microsoft ActiveSync 3.5 or a later version on your computer.

I connected my iPAQ h2200 Series before installing Microsoft ActiveSync.

1. Disconnect the USB or serial cable from your computer.
2. If you have Windows 98SE, 2000, or NT 4.0, uninstall the USB or the serial device record.
3. Install Microsoft ActiveSync.
4. Reconnect the h2200 Series cable or cradle.

Microsoft ActiveSync cannot locate my iPAQ h2200 Series when I synchronize.

- Make sure the h2200 Series unit is on.
 - Make sure all cables are securely connected.
 - Make sure the battery is charged by viewing the h2200 system battery icon.
 - Remove your iPAQ h2200 Series from the cradle or cable, power on the unit by pressing the **Power** button, then put it back in the cradle or connect it to the cable.
 - Insert the stylus into the **Unit Reset Switch**, and press for one second.
-

The symptom or situation is...	Suggestion (Continued)
I want to travel with my iPAQ h2200 Series.	<ul style="list-style-type: none"> • Back up your information. • Take a copy of your backup with you on a CompactFlash memory card. • Disconnect all external devices. • Take the AC adapter and charger adapter with you. • Keep your iPAQ h2200 Series in a protective case and take it with your carry-on luggage.
I want to travel internationally with my iPAQ h2200 Series.	Make sure you have the modem, cable, and plug adapter appropriate for the country you are visiting.
I want to ship my iPAQ h2200 Series to a repair facility.	<ul style="list-style-type: none"> • Back up your information. • Disconnect all external devices. • Pack your iPAQ h2200 Series and all external devices in protective packaging.
I cannot connect to a network.	<ul style="list-style-type: none"> • Make sure you have added the necessary server information. • Make sure the network is not busy. • Make sure the proper drivers for your card are installed. • Make sure your user name and password are correct.
I cannot find the keyboard.	Tap the Keyboard icon.
I cannot open e-mail in the Inbox after I restore using Microsoft ActiveSync.	It may be necessary to synchronize your iPAQ h2200 Series with your computer again with Microsoft ActiveSync to link your e-mail from your h2200 Series to your computer. For more information, see the "Synchronizing with Your Computer" section in Chapter 2, "Connecting."

The symptom or situation is...	Suggestion <i>(Continued)</i>
When I try to open the Inbox, I receive an error or the application hangs.	Limit the number of e-mail services you create.
I get an error when I try to record a note in Calendar or in Tasks.	Try using a more compressed recording format in Calendar or Tasks (e.g., 8,000 Hz, Mono (.7 KB/s) is the most compressed format available).
I want to see the current date.	<ul style="list-style-type: none">• From the Start menu, tap Calendar.• Tap the Go-to-Today icon to see today's date.
I cannot see all of my appointments.	Make sure the appointment you created is in the selected category.
I cannot find the document or workbook I saved.	Pocket Word and Excel only recognize and display documents in one folder below My Documents. For example, if you created another folder in the Personal folder in My Documents, the documents in that folder will not be shown.
I tried to synchronize a workbook and the file is unresolved in Microsoft ActiveSync.	Pocket Excel does not support all Excel formatting; therefore, Microsoft ActiveSync cannot synchronize the file.
I cannot view the map that I created using a mapping application on my computer.	Recreate your map in a version 2001 mapping application.

The symptom or situation is...	Suggestion (Continued)
I created annotations in my eBook and cannot figure out how to delete them.	<ol style="list-style-type: none"> 1. Navigate to the page that contains the annotation. 2. Tap and hold the bookmark, note, or drawing icon or the highlighted text. 3. Tap Delete from the pop-up menu.
I cannot discover another device.	<ul style="list-style-type: none"> • Try to move closer to the device. • Make sure the Bluetooth radio is turned on. • Make sure you have not limited your ability to see devices.
I can see other devices, but I cannot connect or exchange data with them.	<ul style="list-style-type: none"> • Try to move closer to the device. • Make sure the Bluetooth radio is turned on. • Make sure the other device has not restricted your access. • Check your transmission power.
My range seems to be degraded in certain groups.	Check your transmission power.
Other devices cannot find my device.	<ul style="list-style-type: none"> • Try to move closer to the device. • Make sure the radio is turned on. • Make sure you have not restricted other devices from finding yours.
Other devices can discover my device, but they cannot connect.	Make sure you have not restricted other devices from connecting to yours.
Other devices do not receive my correct business card information.	Make sure you have correctly set up your business card information.

The symptom or situation is...	Suggestion (Continued)
When I exchange business cards, I do not receive the device's data.	Make sure you have the right to retrieve that information from the other computer.
I cannot find my device I saved to a group.	See if they have expired due to inactivity.
My device is always asking me for a password.	Check your passkey settings.
I cannot find files sent to me by another device.	Check your shared directory.
I cannot delete the "All Devices" group.	This action cannot be performed. The "All Devices" group cannot be renamed or deleted.
I cannot get my iPAQ h2200 Series to recognize the expansion card.	<ul style="list-style-type: none">• Make sure you have firmly pushed the expansion card down into the iPAQ h2200 Series.• Make sure you have inserted the appropriate card into the appropriate slot.
I cannot insert my card.	<ul style="list-style-type: none">• Make sure you are not inserting the card at an angle.• Make sure you insert the connection area first.
I cannot establish a connection.	<ul style="list-style-type: none">• Make sure your card is inserted into the appropriate expansion slot (SF or CD).• Make sure your card is properly inserted into the appropriate expansion slot on your h2200 unit.• Follow the manufacturer's instructions to install the driver.

**The
symptom or
situation
is...**

Suggestion *(Continued)*

My iPAQ h2200 Series cannot recognize my card.

Perform a normal reset of your iPAQ h2200 Series by inserting the stylus into the unit reset switch on the back of the iPAQ h2200 Series for two seconds.

Regulatory Notices

Federal Communications Commission Notice

This equipment has been tested and found to comply with the limits for a Class B digital device, pursuant to Part 15 of the FCC Rules. These limits are designed to provide reasonable protection against harmful interference in a residential installation. This equipment generates, uses, and can radiate radio frequency energy and, if not installed and used in accordance with the instructions, may cause harmful interference to radio communications. However, there is no guarantee that interference will not occur in a particular installation. If this equipment does cause harmful interference to radio or television reception, which can be determined by turning the equipment off and on, the user is encouraged to try to correct the interference by one or more of the following measures:

- Reorient or relocate the receiving antenna
- Increase the separation between the equipment and receiver
- Connect the equipment into an outlet on a circuit different from that to which the receiver is connected
- Consult the dealer or an experienced radio or television technician for help

Modifications

The FCC requires the user to be notified that any changes or modifications made to this device that are not expressly approved by Hewlett-Packard Company may void the Reference authority to operate the equipment.

Cables

Connections to this device must be made with shielded cables with metallic RFI/EMI connector hoods in order to maintain compliance with FCC Rules and Regulations.

Declaration of Conformity for products marked with the FCC logo—United States only

This device complies with Part 15 of the FCC Rules. Operation is subject to the following two conditions: (1) this device may not cause harmful interference, and (2) this device must accept any interference received, including interference that may cause undesired operation.

For questions regarding your product, contact:

Hewlett-Packard Company
P. O. Box 692000, Mail Stop 530113
Houston, Texas 77269-2000

Or, call 1-800-652-6672

For questions regarding this FCC declaration, contact:

Hewlett-Packard Company
P. O. Box 692000, Mail Stop 510101
Houston, Texas 77269-2000

Or, call (281) 514-3333

To identify this product, refer to the Part, Series, or Model number found on the product.

Canadian Notice

This Class B digital apparatus meets all requirements of the Canadian Interference-Causing Equipment Regulations.

Avis Canadien

Cet appareil numérique de la classe B respecte toutes les exigences du Règlement sur le matériel brouilleur du Canada.

Japanese Notice

この装置は、情報処理装置等電波障害自主規制協議会（VCCI）の基準に基づくクラスB情報技術装置です。この装置は、家庭環境で使用することを目的としていますが、この装置がラジオやテレビジョン受信機に近接して使用されると、受信障害を引き起こすことがあります。

取扱説明書に従って正しい取り扱いをして下さい。

Battery Warning



WARNING: This computer contains a lithium ion rechargeable battery pack. To reduce the risk of fire or burns, do not disassemble, crush, puncture, short external contacts, or dispose of in fire or water.



CAUTION: Danger of explosion if battery is incorrectly replaced. Replace only with the same or equivalent type recommended by the manufacturer. Dispose of used batteries according to the manufacturer's instructions.



Because of the type of battery used in your h2200 Series, follow local regulations regarding the safe disposal of the battery. Your vendor can advise you on local regulations, and/or the existence of any battery disposal programs in operation.

Equipment Warning



WARNING: To reduce the risk of personal injury, electrical shock, fire or damage to the equipment:

- Plug the AC adapter into a grounded (earthed) electrical outlet that is easily accessible at all times.
 - Disconnect power from the equipment by unplugging the AC adapter from the electrical outlet or unplugging the Synchronization cable from the host computer.
 - Do not place anything on the AC adapter cord or any of the other cables. Arrange them so that no one may accidentally step on or trip over them.
 - Do not pull on a cord or cable. When unplugging from the electrical outlet, grasp the cord by the plug or, in the case of the AC adapter, grasp the AC adapter and pull out from the electrical outlet.
 - Do not use converter kits sold for appliances to power the iPAQ h2200 Series.
-

Airline Travel Notice

Use of electronic equipment aboard commercial aircraft is at the discretion of the airline.

Wireless Notices

In some situations or environments, the use of wireless devices may be restricted. Such restrictions may apply aboard airplanes, in hospitals, near explosives, in hazardous locations, etc.

If you are uncertain of the policy that applies to the use of this device, please ask for authorization to use it prior to turning it on.

U.S. Regulatory Wireless Notice

This products emits radio frequency energy, but the radiated output power of this device is far below the FCC radio frequency exposure limits. Nevertheless, the device should be used in such a manner that the potential for human contact with the antenna during normal operation is minimized.

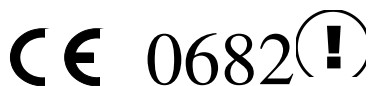
Canadian Regulatory Wireless Notice

Operation is subject to the following two conditions: (1) this device may not cause interference, and (2) this device must accept any interference, including interference that may cause undesired operation of the device.

To prevent radio interference to the licensed service, this device is intended to be operated indoors and away from windows to provide maximum shielding. Equipment (or its transmit antenna) that is installed outdoors is subject to licensing.

The term “IC:” before the certification/registration number only signifies that the Industry Canada technical specifications were met.

European Union Notice



Products bearing the CE marking comply with the R&TTE Directive (1999/5/EC), EMC Directive (89/336/EEC), and the Low Voltage Directive (73/23/EEC) issued by the Commission of the European Community.

Compliance with these directives implies conformity to the following European Norms (in parentheses are the equivalent international standards and regulations):

- EN 55022 (CISPR 22)—Electromagnetic Interference
- EN 55024 (IEC61000-4-2, 3, 4, 5, 6, 8, 11)—
Electromagnetic Immunity
- EN61000-3-2 (IEC61000-3-2)—Power Line Harmonics
- EN61000-3-3 (IEC61000-3-3)—Power Line Flicker
- EN 60950 (IEC 60950)—Product Safety
- ETS 300 328—Technical requirements for radio equipment
- ETS 300 826 or EN 301 489-17—General EMC
requirements for radio equipment

This product may be used in all EU and EFTA countries.

Japanese Regulatory Wireless Notice

この機器の使用周波数帯では、電子レンジ等の産業・科学・医療用機器のほか工場の製造ライン等で使用されている移動体識別用の構内無線局（免許を要する無線局）及び特定小電力無線局（免許を要しない無線局）が運用されています。

- 1 この機器を使用する前に、近くで移動体識別用の構内無線局及び特定小電力無線局が運用されていないことを確認して下さい。
- 2 万一、この機器から移動体識別用の構内無線局に対して電波干渉の事例が発生した場合には、速やかに使用周波数を変更するか又は電波の発射を停止した上、下記連絡先にご連絡頂き、混信回避のための処置等（例えば、パーティションの設置など）についてご相談して下さい。
- 3 その他、この機器から移動体識別用の特定小電力無線局に対して電波干渉の事例が発生した場合など何かお困りのことが起きたときは、次の連絡先へお問い合わせ下さい。

連絡先：コンパックコンピュータ株式会社 TEL：0120-101589

2 . 4 F H 2



Brazilian Regulatory Wireless Notice

Este equipamento opera em caráter secundário, isto é, não tem direito a proteção contra interferência prejudicial, mesmo de estações do mesmo tipo, e não pode causar interferência a sistemas operando em caráter primário.

Hardware Specifications

System Specifications

Specifications

System Feature	hp iPAQ h2200 Series
Processor	Intel Cotulla 200 Mhz or Cotulla 400 Mhz (Need Street Name)
Memory	64 MB SDRAM or greater
Read only Memory	32 MB ROM or greater
SD Storage	Memory card and SDIO ready
CD Storage	Memory card, modem card, and SDIO ready
Display	Transflective color TFT, 240 x 320 pixels, 64K-color support, .24-dot pitch
LED Backlight	Multi-level brightness adjustment
Audio	Speaker, 3.5 mm stereo headphone and microphone jack
Infrared	IrDA, data transfer up to 115.2 Kb per second and Universal Remote Control for control of home entertainment units (on select models)
Bluetooth	Select models only

Specifications (Continued)

System Feature	hp iPAQ h2200 Series
Communications	Communication port
Indicators	3-mode alarm notification: Flashing green LED, tone, pop-up message Charging: flashing LED/Fully Charged: solid amber LED Bluetooth active: flashing/solid blue LED
Battery	Removable/rechargeable 900mAh Lithium ion with internal memory backup battery

Physical Specifications

hp iPAQ h2200 Series

	US	Metric
Length	4.50 in	114.3 mm
Width	2.75 - 2.50 in tapering	69.8 - 64.5 mm tapering
Depth	0.63 in	16.0 mm
Weight	5.49 oz	155.6 g

Operating Environment

Environment

		US	Metric
Temperature	Operating	32° to 104°F	0° to 40°C
	Nonoperating	-22° to 140°F	-30° to 60°C
Relative Humidity	Operating	10 to 90%	10 to 90%
	Nonoperating	10 to 90%	10 to 90%
Maximum Altitude	Operating	0-15,000 ft	14.7 to 10.1 psia
	Nonoperating	0-15,000 ft	14.7 to 10.1 psia

Routine Care and Battery Guidelines

Routine Care

To keep your HP iPAQ h2200 Series Pocket PC in good condition and working properly, follow these guidelines:

- Keep your Pocket PC away from excessive moisture and temperature extremes. Do not expose your Pocket PC to liquids or precipitation.
- To prevent damage to the screen, do not place anything on top of your Pocket PC.
- Store your Pocket PC in a protective case when not in use.
- Clean your Pocket PC by wiping the screen and the exterior with a soft, damp cloth moistened only with water.
- Avoid exposing your Pocket PC to direct sunlight or strong ultraviolet light for extended periods of time. Also avoid scratching the surface of the screen and banging it against hard objects.
- Use only the h2200 stylus on the screen to prevent scratching the screen.



CAUTION: To reduce the risk of electrical shock or damage to the internal components, do not spray liquid directly on the screen or allow excess liquid to drip inside your h2200 Series. Using soap or other cleaning products on the screen may discolor the finish and damage the screen.

Battery Guidelines



WARNING: This computer contains a lithium ion rechargeable battery pack. To reduce the risk of fire or burns, do not disassemble, crush, puncture, short external contacts, or dispose of in fire or water.



The h2200 battery is a rechargeable, user-removeable Lithium ion type. This battery can be recharged using the iPAQ h2200 Series in the synchronization cradle or by using the included AC adapter.

When the Lithium ion battery is no longer rechargeable, it should not be disposed of along with general household waste. In order to forward them to recycling or dispose of them properly, please use the public collection system or return them to Hewlett-Packard, or your authorized Hewlett-Packard agents.



Because of the type of battery used in your h2200 Series, follow local regulations regarding the safe disposal of the battery. Your vendor can advise you on local regulations, and/or the existence of any battery disposal programs in operation.

In North America, dispose of the h2200 Series battery by taking advantage of the battery recycling program. You will be provided with a postage-paid battery pack mailer pre-addressed to a reclamation facility where the metals are recycled.

Index

802.11 memory card 7-3

A

AC adapter

traveling 1-17

working at desk 1-17

ActiveSync

connect to computer

synchronize with computer

2-1

application buttons

customize 1-6

applications

close 1-37

install 1-38

opening 1-36

appointments

categorize 5-9

delete 5-9

schedule 5-7

B

backlight 1-23

battery C-1

charging with the cradle 1-20

charging with the

synchronization cable 1-19

preserving battery time 1-22

recharging 1-17

standby settings 1-22

Block Recognizer 1-31

C

Calendar 5-5

cards

installing 7-4, 7-5, 7-6

cards, installing 7-3

CompactFlash (CF) Cards 7-5

connect

to the Internet 2-8

to your network 2-8

contacts

categorize 3-18

create 3-15

delete 3-21

edit 3-17

view 3-17

convert writing to text 1-34

customize

application buttons 1-6

Calendar appearance 5-6

D

date

set 1-5

delete

eBook 6-24

draw on screen 1–33

E

eBook

 annotate 6–23

 copy 6–20

 delete 6–24

 listen to 6–22

 read 6–21

e-mail

 create 3–3

 delete 3–9

 manage folders 3–13

 move 3–11

 open 3–8

 open a folder 3–12

 receive 3–7

 send 3–3

e-mail service, set up 3–1

enter information 1–25

expansion cards

 802.11 memory card 7–3

 CompactFlash (CF) Cards 7–5

 modem card 7–4

 Secure Digital (SD) card 7–6

F

files, move to, from computer 2–7

folders 3–12, 3–13

H

help

 Word 6–6

I

infrared connection

 connect computer 2–1

install

802.11 memory card 7–3

 applications 1–38

 CompactFlash Card 7–5

 modem card 7–4

 Secure Digital card 7–6

Internet Service Provider 2–8

L

Letter Recognizer 1–29

link to Web sites 2–12

M

memory cards

 802.11 7–3

 Secure Digital (SD) card 7–6

 view content 7–2

Microsoft Reader 6–19

 copy ebooks 6–20

 delete eBook 6–24

Microsoft Transcriber 1–30

modem card 7–4

 using a 2–8

N

network, connect 2–8

notes

 write 1–41

O

options, change

 Microsoft Reader 6–26

 Word 6–4

 word suggestions 1–25

P

Pocket Excel 6–7

Pocket Word 6–1

R

realign screen 1–13

record

voice 1–39

reminders, set 5–7, 5–12

S

screen

realign 1–13

Secure Digital (SD) card 7–6

set

date 1–5

time, home 1–2

time, visiting location 1–4

specifications B–1

synchronization, change settings

2–5

synchronize

Excel workbooks 6–7

links to Web sites 2–12

with your computer 2–2

Word documents 6–1

T

tasks 5–12

time

set for home 1–2

set for visiting location 1–4

Today screen 5–1

V

view

contacts 3–17

memory card content 7–2

voice

recording 1–39

W

Web sites

synchronize links 2–12

Windows Explorer 2–7

wireless connection, 802.11 card

7–3

Word 6–1

word suggestions, change options

1–25

write on screen 1–33

writing, convert to text 1–34

