

Pocket PC Phone

Congratulations on the purchase of your new Windows® Powered Pocket PC Phone 2003 ! This information will help you set up your phone so you can begin using it.

Warnings! Please Read Before Operating your Device



THE DEVICE IS NOT CHARGED WHEN YOU TAKE IT OUT OF THE BOX. (For information, see *Step 2: Charge the battery* below)



DO NOT REMOVE THE BATTERY PACK WHEN THE DEVICE IS CHARGING.




WHEN INSERTING YOUR SIM CARD, MAKE SURE THE DEVICE IS POWERED-OFF BEFORE YOU REMOVE THE BATTERY PACK. THEN CLICKS IT INTO PLACE. (For more information, see *Step 1: Insert the SIM card* below)



IN MANY COUNTRIES YOU ARE REQUIRED BY LAW TO TURN OFF YOUR PHONE WHEN YOU FLY. TURNING OFF YOUR POCKET PC DOESN'T TURN OFF YOUR PHONE; YOU MUST TURN OFF YOUR WIRELESS CONNECTION TO YOUR OPERATOR'S NETWORK.



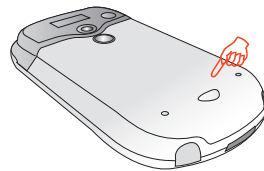
YOUR WARRANTY IS INVALIDATED IF YOU OPEN OR TAMPER WITH THE DEVICE'S OUTER CASING. (For more information, see the enclosed warranty card)

- 
- **Setting Up**
 - **The Basics**
 - **Navigating**
 - **Using for the First Time**
 - **Bluetooth**
 - **Regulatory Notice**

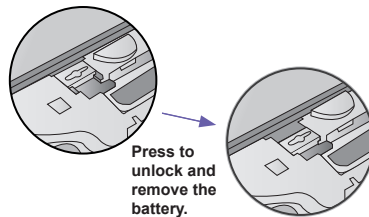
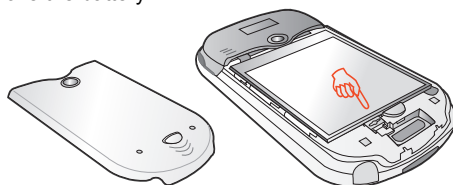
Step 1 : Insert the SIM card

Follow the steps outlined below to set up your phone and get it ready to synchronize with your PC:

- 1 Turn over your device and press the fixing lock button to remove the back cover.

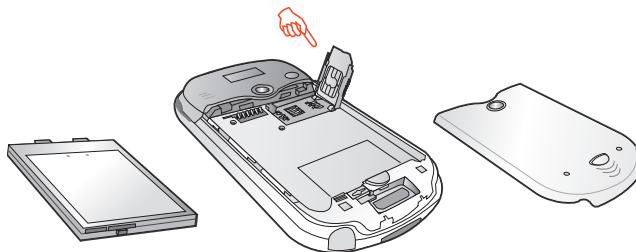


- 2 Press the stylus into the slot under the bottom end of the battery to unlock and remove the battery.



Press to unlock and remove the battery.

- 3 Lift up the SIM card case and insert the SIM. Push it forward and pull back to secure the SIM.



MAKE SURE YOU HAVE SAVED ANY DATA IN OPEN PROGRAMS: OPENING THE SIM DOOR WILL TURN YOUR DEVICE OFF

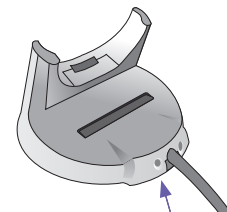
- 4 Replace the battery and back cover. Remember to push back the black lock point to clip it into place at the bottom.

Step 2 : Charge the Battery

You can charge your Pocket PC Phone in the following ways:

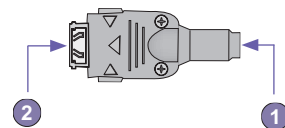
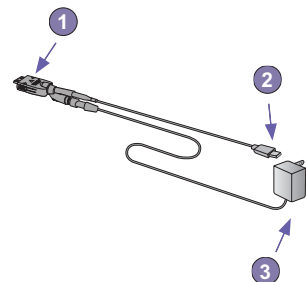
Option 1

- 1 Insert the AC adapter into the back of the cradle, and then plug into the mains.
- 2 Dock your Pocket PC phone in its cradle and fully charge for 3 ~ 4 hours. A steady amber LED indicates charging; solid green fully charged.
- 3 If you have spare battery for your Pocket PC Phone, you can also put your battery into the slot in the cradle for recharging.



AC Adapter plugs into the back of the cradle

Put an optional unit into the slot for recharging



Option 2

You can plug the AC adapter into the optional USB/Serial cable head and then connect your phone directly to an external power source.

- 1 To your Pocket pc phone.
- 2 USB synchronization cable.
- 3 Plug the AC adapter into a socket.

Option 3

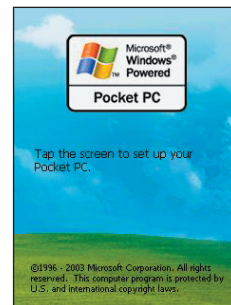
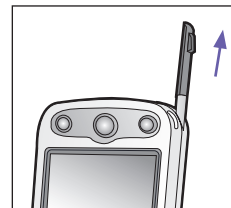
You can plug the AC adapter into the optional DC Converter and then connect your phone directly to an external power source.

- 1 To AC adapter.
- 2 To your Pocket pc phone.

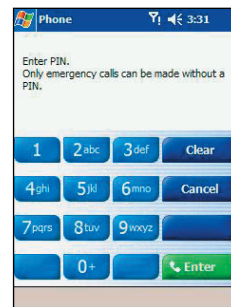
Step 3 : Switching on and Entering your PIN

Once you have started to charge your device, you can switch it on. First time, it is however recommended that you fully charge your device about 1 hour - before switching it on.

- 1 Press the button indicated below for about 3 seconds – wait for your operator and Microsoft screens to load.
- 2 Remove the stylus from its housing.
- 3 When the *Welcome Wizard Screen* appears, tap with your stylus.



- 4 Enter your PIN, and then press Enter.



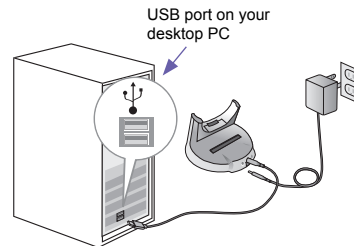
Step 4 : Installing ActiveSync

Using Microsoft® ActiveSync® you can synchronize information on your desktop computer and/or a Microsoft® Exchange Server with the information on your Pocket PC phone. ActiveSync compares the information on your Pocket PC phone with the information on your desktop computer and/or the server and updates all locations, keeping you up-to-date with the most recent information.

Before you can begin synchronization with your desktop PC, you must install ActiveSync on your desktop computer from the Pocket PC phone 2003 Companion CD. ActiveSync is already installed on your Pocket PC phone.

Hardware Connection

Dock your Pocket PC phone in its cradle and plug the USB/Serial to your desktop PC for synchronization.



Software Installation

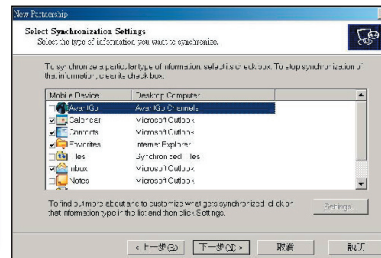
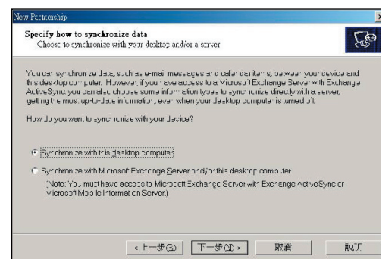
- 1 Insert the Pocket PC phone 2003 Companion CD into the CD-ROM drive of your desktop computer.
- 2 Click the yellow arrow, click [Start Here](#), and then follow the directions on the screen.

To Create a Partnership

After the installation is completed, the ActiveSync New Partnership Wizard will help you set up a partnership between your phone and your desktop computer so that you can start synchronizing information and customizing your synchronization settings. Your first synchronization process will automatically begin when you finish using the wizard. After the first synchronization, you will notice that your Outlook information now appears on your phone.



To prevent synchronization problems, it is important that you select Synchronize with this desktop in the New Partnership Wizard options.



Front , Top and Left Side Panel Components

Power Button / Backlight

Press to turn on / off your pocket PC or backlight

Notification LED

See the description to the right.

Contacts

Press for quick access to your Contacts

Record

Press to record a voice note

Volume

Press to adjust the volume of your device

Camera

Press to launch camera capture utility. Press again to take a picture.

Soft Reset

Press into the hole with the stylus to reset your device.

Send

Press to take an incoming call, or press to dial a number

Microphone

Speak here when receiving / making a phone call or voice recording.

MMC and SD card slot

Insert either MMC or SD cards in this slot.

Infrared port

Enables you to exchange file(s) or data with other devices without cables/ wires

Speaker

Listen to audio media or a phone call from here.

Calendar

Press to quickly access to the Calendar.

Touch Screen

For handwriting, drawing or to make a selection with the stylus

End

Press to end a call.

Navigation Pad

To move up/ down and left/ right through any of the drop down menus or program instructions; select by pressing in the center.

When in the Dialerscreen :

Left - Press once to access the Speed Dial feature.

Right- Press once to access the Call Log feature.




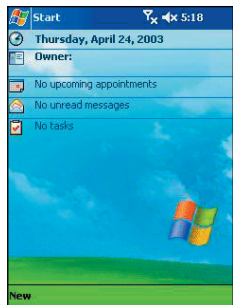
Back, Bottom and Right Side Panel Components



Navigating

Using the Today screen

When you turn on your device for the first time each day (or after 4 hours of inactivity), you'll see the Today screen. You can also display it by tapping  and then **Today**. On the Today screen, you can see at glance important information for the day.



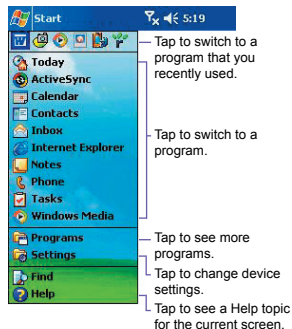
Navigation options from the Today screen

The center of the Today screen displays your next appointment, the number of messages in Inbox, and your current profile. You can scroll to one of these items and press the Action key, or simply tap it with your stylus.

Navigation bar and Command bar

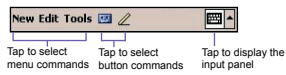
The navigation bar is located at the top of the screen. It displays the active program and current time, and allows you to switch to programs and close screens.

Use the command bar at the bottom of the screen to perform tasks in programs. The command bar includes menu names, buttons, and the Input Panel button. To create a new item in the current program, tap **New**. To see the name of a button, tap and hold the stylus on the button. Drag the stylus off the button so that the command is not carried out.



Pop up menus

With pop up menus, you can quickly choose an action for an item. For example, you can use the pop up menu in the contact list to quickly delete a contact, make a copy of a contact, or send an e-mail message to a contact. The actions in the pop up menus vary from program to program. To access a pop up menu, tap and hold the stylus on the item name that you want to perform the action on. When the menu appears, lift the stylus, and tap the action you want to perform. Or tap anywhere outside the menu to close the menu without performing an action.



Navigation pad

Use the navigation pad to move the selection focus up, down, left, or right. This is called "scrolling." In a text field, use the navigation pad to move the cursor right or left, character by character.




Stylus and Touch screen

Your device has a touch screen meaning you can navigate and make selections on your device by tapping an item with the stylus or your finger.

Hard keys

There are seven hard keys on your phone, located directly below and above the display screen, and on the side. By default the two above the screen are set as Calendar and Contacts and the three on the side Recorder, Volume and Camera, however, they can be reprogrammed (The send and answer a call keys on either side of the navigation pad cannot be reassigned):

- 1 Tap Start  → Settings → Personal → and Buttons.
- 2 Select a button from the top box and a program from the bottom box.

Action key

Press the Action key to open a selected item, or to select or clear a check box. The Action key works much like the ENTER key on a keyboard, and is sometimes referred to as the "Do It" key.

To navigate to a program

- 1 On the **Today** screen, tap in the top left hand corner for the navigation bar.
- 2 Select the program you want, and tap it or press the **Action** button.

Programs Menu

The main features of the programs menu are listed below. To access them simply press **Start** soft key in the Home screen. To access an item scroll to it, and then press the Action key.



Today

Tap to return to the Today screen.



Inbox

Opens the Messaging feature in the Inbox, where you can read text messages or emails, and compose new ones.



Windows Media Player

Play music and watch video clips while on the move.



ActiveSync

Keep your contacts, tasks, emails and calendar events up-to-date between your computer and phone by synchro-nizing regularly.



Internet Explorer

Browse the Internet or visit your favorite WAP sites straight from your phone, even while on the move.



MSN Messenger

Keep in touch with your friends in real time by subscribing to this free service.



Calendar

Record your important events, and setup alarms to remind you when important events mature.



Notes

Record your thoughts and save them to play back later.



Settings

Personalize your phone to suit the way you use it.



Contacts

Opens your contacts list alphabetically.



Tasks

Keep track of what you need to do, when, and even have your phone alert you of an important dead-line in advance.go to its Help file.



Find

Find files or programs stored on your computer.






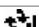







Help

Lists all the functions on your device, tap one to go to its Help file.

Indicators

Following are some of the status icons you may see.

Indicators	Meaning
	Turns all sounds on and off.
	Main battery low.
	Main battery very low.
	Connection is active.
	Synchronization is beginning or ending.
	Synchronization is occurring.
	Notification that one or more instant messages were received.
	Notification that one or more mobile e-mail / SMS messages were received.
	Shows the connection to your mobile phone service provider is on and the strength of the signal.
	Indicates your phone is switched off.
	If more notification icons need to be displayed and there is no room to display them, than this indicator will display. Tap the icon to view all notification icons.

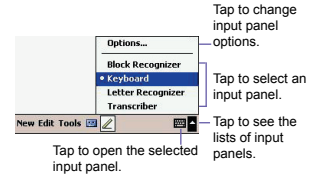
Write your first notes

Entering text using the input panel

Use the input panel to enter information in any program on your device. You can either type using the soft keyboard or write using Letter Recognizer, Block Recognizer, or Transcriber. In either case, the characters appear as typed text on the screen.



To show or hide the input panel, tap the Input Panel button. Tap the arrow next to the Input Panel button to see your choices.



To type with the soft keyboard

When you use the input panel, your device anticipates the word you are typing and displays it above the input panel. When you tap the displayed word, it is inserted into your text at the insertion point. The more you use your device, the more words it learns to anticipate.

To use Letter Recognizer



- 1 With **Letter Recognizer** you can write letters using the stylus just as you would on paper.
- 2 Tap the arrow next to the Input Panel button and then **Letter Recognizer**.
- 3 Write a letter in the box.
- 4 When you write a letter, it is converted to typed text that appears on the screen. For specific instructions on using Letter Recognizer, with Letter Recognizer open, tap the question mark next to the writing area.



Tap here if this is the right word.

