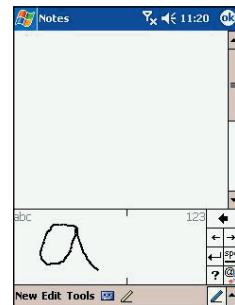


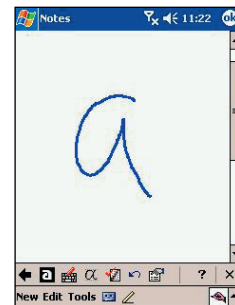
To use Block Recognizer

- 1 With Block Recognizer you can input character strokes using the stylus that are similar to those used on other devices.
- 2 Tap the arrow next to the Input Panel button and then **Block Recognizer**.
- 3 Write a letter in the box.
- 4 When you write a letter, it is converted to typed text that appears on the screen. For specific instructions on using Block Recognizer, with Block Recognizer open, taps the question mark next to the writing area.



To switch to Transcriber

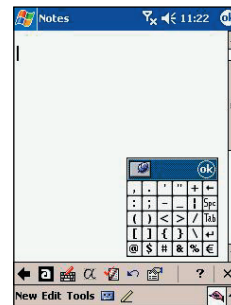
- 1 With Transcriber you can write anywhere on the screen using the stylus just as you would on paper. Unlike Letter Recognizer and Block Recognizer, you can write a sentence or more of information. Then, pause and let Transcriber change the written characters to typed characters.
- 2 Tap the arrow next to the Input Panel button and then **Transcriber**.
- 3 Write anywhere on the screen.
- 4 For specific instructions on using Transcriber, with Transcriber open, tap the question mark in the lower right hand corner of the screen.



Write your first notes (Cont'd)

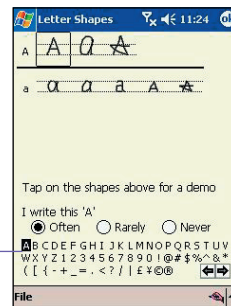
To punctuate in Transcriber

- 1 Tap the keyboard on the toolbar.
- 2 Tap **OK** to hide the keyboard.



To see how to write a letter in Transcriber

- 1 Tap "a" on the toolbar.
- 2 In the screen that appears, select the letter you want to learn about, and then tap on one of the examples given above.
- 3 For specific instructions on using Transcriber, with Transcriber open, tap the question mark in the lower right hand corner of the screen.

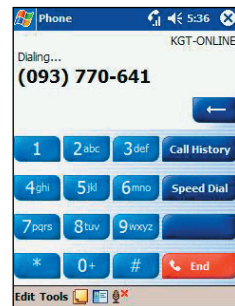


Click on a letter
for a demonstration

Make Your First Call

To make a call from Dialer

- 1 Press Send to enter the Home screen.
- 2 Dial the number you want to call using the keypad.
- 3 If the number or name is already in your contacts list, enter the name or number of the person you want to call.
- 4 When it appears in the list, scroll to it and press the Talk key.



To make a call from Contacts

You can make a call from Contacts in the following ways :

Option 1

- 1 Press the Microsoft Contacts Button, find the contact and then tap **the left button** twice -- once to send to the dialer screen and once to call.



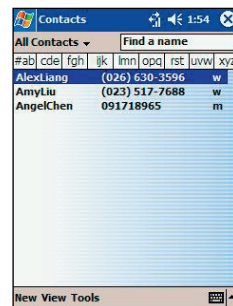
The pop up menu and **the left button** will by default display **Call Work Tel**. However, you can customize so that the mobile number or email is displayed instead:

Option 2

- 1 Select a contact in the contacts list and then press left or right on the navigation pad -- the number on the screen will change.

Option 3

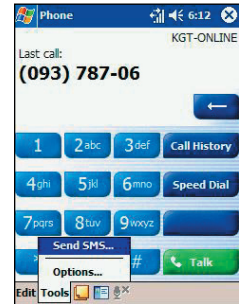
- 1 In the contacts list, tap the **w** in the right column next to the contact you want to customize. A pop-up menu will display the phone numbers and email addresses for this contact with a dot next to the priority number.
- 2 In the pop-up menu select a priority -- If you selected mobile number, **m** should now be in the right column next to the contact.



Write your first text message or email



- 1 Press Send, tap Tools, and then Send SMS.
- 2 The screen below will appear.
- 3 Tap New.
- 4 In the TO field, enter either e-mail address or SMS number of one or more recipients, separating them with a semicolon, or select a name from the contact list by tapping the Address Book button. All e-mail addresses entered in the e-mail fields in Contacts appear in the Address Book.
- 5 Compose your message. Tap Send.




To enter preset or frequently used message, tap My Text and select a message.

Set up to access email, WAP and the Internet

Setting up your phone for using the Internet, email and WAP is one of the most important things you will have to do. However, once done, you will be able to access a world of information anywhere, all at the touch of a few keys.

You can use **GPRS** to connect to your mobile ISP :

- 1 Obtain the following information from your ISP: **ISP server phone number**, **user name**, and **password**.
- 2 Tap  → **Setting** → **Connections** tab → **Connections**
- 3 In **My ISP**, tap **Add a new modem connection**.
- 4 Create a modem connection.



Wireless connections can be made via a mobile phone network or GPRS. If you are using a mobile phone network to connect, in the **Select a modem list**, tap **Cellular Line**. If you are using GPRS, tap **Cellular Line (GPRS)**.

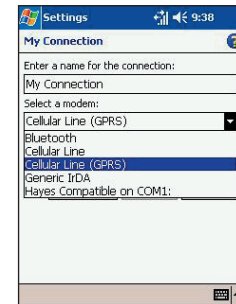
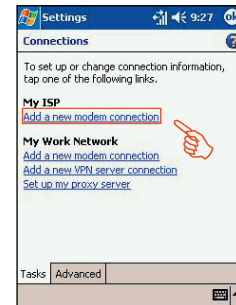
- 5 To start the connection, begin using the desired program. For example, switch to Pocket Internet Explorer and browse to a Web page. Your device will automatically connect.



- To set up a network card or wireless network connection to your ISP, add a new connection under My Work Network.
- To change modem connection settings, in either **My ISP** or **My Work Network**, tap **Manage existing connections**. Select the desired modem connection, tap **Settings**, and follow the instructions on the screen.




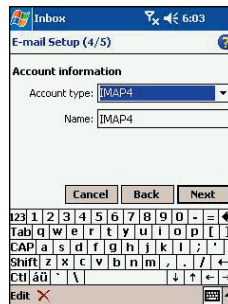
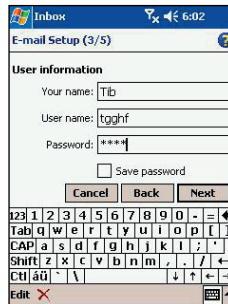
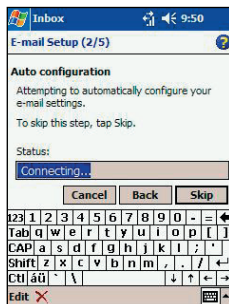
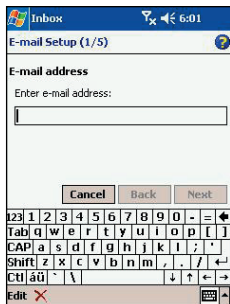
To view additional information for any screen in the ward or while changing settings, tap .




Setting up your e-mail account












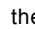
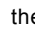
- 1 Prepare your email account details.
- 2 In Inbox on your device, tap **Accounts**, and then **New Account**. Follow the directions in the New Account wizard Press Menu, scroll to Options, press Action and then enter E-mail setup.
- 3 To fill you e-mail address in the field, and then tap **Next**.
- 4 Enter “Your name”, your “User name” and “Password” then tap **Next**.
- 5 From the drop down menu select the “Service type” that your email provider supports (POP3 or IMAP4).
- 6 Enter a “Name” for your email account then tap **Next**
- 7 Enter the your email provider’s server name information for Incoming mail and Outgoing mail, then tap **Finish**. For an explanation of a screen, tap  and then **Help**. When finished, to connect to your e-mail server, tap **Accounts** and then **Connect**.
- 8 When you have finished, you will see the Set-up Complete screen. Press Finish to save the account. You can repeat the process for as many accounts as you wish to setup.



Accessing information using Pocket Internet Explorer




Tap  and then Internet Explorer.

To browse the Internet

- 1  In the address bar that appears at the top of the screen, enter the Web address you want to visit.
- 2  Tap  Go to the web address you entered.
- 3  Tap  the **Favorites** button, and then tap the favorite you want to view.
- 4  Tap  to go back to the **Homepage** you set.
- 5  Tap  to refresh the web page on the screen.
- 6  Tap the arrow  to choose from previously entered addresses.



To view mobile favorites and channels

- 1  Tap the **Favorites** button to display your list of favorites.
- 2  Tap the page you want to view.
- 3  You will see the page that was downloaded the last time you synchronized with your PC. If the page is not on your device, the favorite will be dimmed. You will need to synchronize with your PC again to download the page to your device, or connect to the Internet to view the page.



To add a favorite link while using the device, go to the page you want to add, tap and hold on the page, and tap **Add to Favorites**.

Bluetooth

Bluetooth is a short-range wireless communications technology. Devices with Bluetooth capabilities can exchange information over a distance of about **30 feet** without requiring a physical connection.

Unlike infrared, you don't need to line up the devices to beam information with Bluetooth. The devices only need to be within a range of about **30 feet**. You can even beam information to a device in a different room, as long as it's within range.

The software included with your Pocket PC Phone allows you to use Bluetooth in following ways :

- **Beam information**, such as files, appointments, tasks, and contact cards, between devices that have Bluetooth capabilities. For example, if you and a co-worker each have a device with Bluetooth, you can beam items between your devices, such as files, contact cards, appointments, tasks, and so forth.
- **Create a dial-up modem connection** between your device and a Bluetooth phone. You can then use the Bluetooth phone as a modem.

Bluetooth modes

Bluetooth operates in three different modes:

a. On

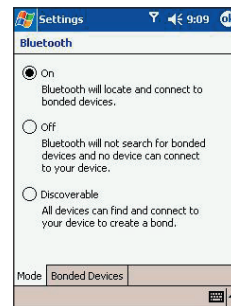
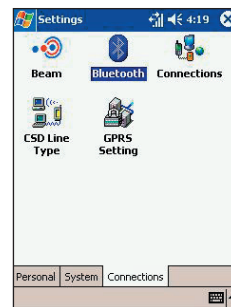
The Bluetooth radio is turned on and you can use Bluetooth features.

b. Off

The Bluetooth radio is turned off. In this mode, you can neither send nor receive information by using Bluetooth. You might want to turn the radio off at times in order to conserve battery power, or in situations where radio use is prohibited, for example on airplanes and in hospitals.

c. Discoverable

The Bluetooth radio is turned on, and all of the other Bluetooth devices within range (about **30 feet**) can detect your device and attempt to beam information to



it, establish a bond, or use a Bluetooth service. In this mode, other devices can detect your device whether or not a bond has been created; however, in order to receive a beam from another device, you must accept it on your device. To make your device discoverable:

Other Bluetooth devices can now detect your device and attempt to beam information to it, establish a bond, or use a Bluetooth service. Note that to receive beamed information, you must accept it on your device.

If you no longer want your device to be discoverable, tap **Off** to turn off the radio or **On** to leave the radio on, but not allow detection by other devices.

Bonds

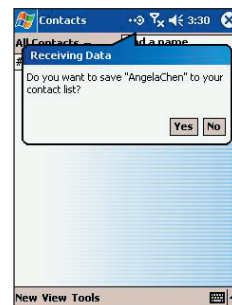
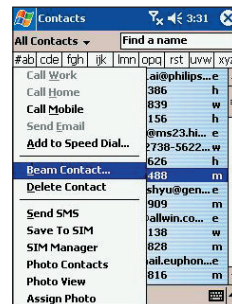
A **bond** is a relationship that you create between your Pocket PC and another **Bluetooth** device in order to exchange information in a secure manner. Creating a bond involves entering the same personal identification number (PIN) on the two devices you want to bond. You need only create a bond once between two devices. Once a bond is created, the devices recognize the bond and are able to exchange information without your entering a PIN again.

Beaming Information with Bluetooth

- 1 Tap and hold an item to beam, such as an appointment in Calendar, a task in Tasks, a contact card in Contacts, or a file in File Manager.
 - 2 Tap **Beam [type of item]**.
 - 3 Tap the device to which you want to send the beam.
- The item is beamed to the device you selected.

Receiving a Bluetooth Beam

- 1 Make sure that your device is configured to receive incoming beams and that **Bluetooth** is in discoverable mode.
 - 2 Make sure that your device is within 30 feet of the device beaming the information.
 - 3 When prompted to receive an incoming beam, tap **Yes**.
- The information is now stored on your device.



Regulatory Agency Identification Numbers

For regulatory identification purposes your product is assigned a model number **PH10xx**.

The following accessories have been evaluated for use with your device. Their assigned model numbers listed below can identify these approved accessories. To ensure continued reliable and safe operation of your Pocket PC Phone, use only the accessories listed below with your **PH10xx**.

Accessories	Model Number
Cradle	PH15x
CF Back Pack	PH16x
Battery Pack	PH17x

- The above X may be any alphanumeric character or blank denoting external cosmetic changes.
- This product is intended for use with certified Class 2 Limited Power Source, rated 5 VDC, minimum 2A power supply unit.

European Union Notice

Products with CE marking comply with the R&TTE Directive (99/5/EC), the EMC Directive (89/336/EEC) and the Low Voltage Directive (73/23/EEC) issued by the Commission of the European Community.

Compliance with these directives implies conformity to the following European Norms (in brackets are the equivalent international standards):

- **EN 60950 (IEC 60950)**
Safety of Information Technology Equipment.

- **ETSI EN 301 511**
Global system for mobile communications (GSM); Harmonized EN for mobile stations in the GSM 900 and GSM 1800 bands covering essential requirements of article 3.2 of the R&TTE directive (1995/5/EC)
- **ETSI EN 301 489-1**
Electromagnetic compatibility and Radio spectrum Matters (ERM); ElectroMagnetic Compatibility (EMC) standard for radio equipment and services; Part 1: Common technical requirements
- **ETSI EN 301 489-7**
Electromagnetic compatibility and Radio spectrum Matters (ERM); ElectroMagnetic Compatibility (EMC) standard for radio equipment and services; Part 7: Specific conditions for mobile and portable radio and ancillary equipment of digital cellular radio telecommunications systems (GSM and DCS)
- **ETSI EN 301 489-17**
Electromagnetic compatibility and Radio spectrum Matters (ERM); ElectroMagnetic Compatibility (EMC) standard for radio equipment and services; Part 17: Specific conditions for 2.4 GHz wideband transmission systems and 5 GHz high performance RLAN equipment.
- **ETSI EN 300 328**
Electromagnetic compatibility and Radio spectrum Matters (ERM); Wideband Transmission systems; data transmission equipment operating in the 2.4 GHz ISM band and using spread spectrum modulation techniques.
- **GSM11.10**
- **ANSI/IEEE C.95.1-1992**
Specific absorption rate in mobile phone emission condition for body health
- **EN50360, EN50361 for SAR**
- **SAR : 0.271mW/10g**

FCC Compliance Statement

■ FCC part 15 and part 24

This device complies with Part 15 of the FCC Rules. Operation is subject to the following two conditions : (1) this device may not cause harmful interference, and (2) this device must accept any interference received, including interference that may cause undesired operation.

■ FCC ID : NM8 HIMALAYAS

■ Statement according to FCC part 15.21

Modifications not expressly approved by HTC could void the user's authority to operate the equipment.

■ Statement according to FCC part 15.105

NOTE : This equipment has been tested and found to comply with the limits for a Class B digital device, pursuant to Part 15 of the FCC Rules. These limits are designed to provide reasonable protection against harmful interference in a residential installation. This equipment generates, uses and can radiate radio frequency energy and, if not installed and used in accordance with the instructions, may cause harmful interference to radio communications. However, there is no guarantee that interference will not occur in a particular installation. If this equipment does cause harmful interference to radio or television reception, which can be determined by turning the equipment off and on, the user is encouraged to try to correct the interference by one or more of the following measures :

- Reorient or relocate the receiving antenna.
- Increase the separation between the equipment and receiver.
- Connect the equipment into an outlet on a circuit different from that to which the receiver is connected
- Consult the dealer or an experienced radio/TV technician for help..

RF exposures

Tests for SAR are conducted using standard operating positions specified by the FCC with the phone transmitting at its highest certified power level in all tested frequency bands. Although the SAR is determined at the highest certified power level, the actual SAR level of the phone while operation can be well below the maximum value. This is because the phone is designed to operate at multiple power levels so as to use only the power required to reach the network. In general, the closer you are to a wireless base station antenna, the lower the power output.

Before a phone model is available for sale to the public, it must be tested and certified to the FCC that it does not exceed the limit established by the government-adopted requirement for safe exposure. The tests are performed in positions and locations (e.g., at the ear and worn on the body) as required by the FCC for each model. (Body-worn measurements may differ among phone models, depending upon available accessories and FCC requirements). While there may be differences between the SAR levels of various phones and at various positions, they all meet the government requirement for safe exposure.

For body worn operation, to maintain compliance with FCC RF exposure guidelines, use only High Tech computer, Corp. approved accessories. When carrying the phone while it is on, use the specific High Tech computer, Corp. supplied or approved carrying case, holster, or other body-worn accessory.

Use of non High Tech computer, Corp. approved accessories may violate FCC RF exposure guidelines and should be avoided.

Important Health and Safety Information

Retain and follow all product safety and operating instructions. Observe all warn and in the operating instructions.ings on the product

To reduce the risk of bodily injury, electric shock, fire, and damage to the equipment observe the following precautions.

a) General Precautions

■ Heed service markings

Except as explained elsewhere in the Operating or Service documentation, do not service any product yourself. Service needed on components inside these compartments should be done by an authorized service technicians or provider.

■ Damage requiring service

Unplug the product from the electrical outlet and refer servicing to an authorized service technicians or provider under the following conditions:

- Liquid has been spilled or an object has fallen into the product.
- The product has been exposed to rain or water.
- The product has been dropped or damaged.
- There are noticeable signs of overheating.
- The product does not operate normally when you follow the operating instructions.

■ Avoid hot areas

The product should be placed away from heat sources such as radiators, heat registers, stoves, or other products (including amplifiers) that produce heat.

■ Avoid wet areas

Never use the product in a wet location.

■ Avoid pushing objects into product

Never push objects of any kind into cabinet slots or other openings in the product. Slots and openings are provided for ventilation. These openings must not be blocked or covered.

■ Mounting Accessories

Do not use the product on an unstable table, cart, stand, tripod, or bracket. Any mounting of the product should follow the manufacturer's instructions, and should use a mounting accessory recommended by the manufacturer.

■ Avoid unstable mounting

Do not place the product with an unstable base.

■ Use product with approved equipment

This product should be used only with personal computers and options identified as suitable for use with your equipment.

■ Adjust the volume

Turn down the volume before using headphones or other audio devices.

■ Cleaning

Unplug the product from the wall outlet before cleaning. Do not use liquid cleaners or aerosol cleaners. Use a damp cloth for cleaning, but NEVER use water to clean an LCD screen.

b) Safety Precautions for Power Supply Unit

■ Use the correct external power source

A product should be operated only from the type of power source indicated on the electrical ratings label. If you are not sure of the type of power source required, consult your authorized service provider or local power company. For a product that operates from battery power or other sources, refer to the operating instructions that are included with the product

■ Handle battery packs carefully

This product contains a Lithium Polymer battery. There is a risk of fire and burns if the battery pack is handled improperly. Do not attempt to open or service the battery pack.

Do not disassemble, crush, puncture, short external contacts or circuits, dispose of in fire or water, or expose a battery pack to temperatures higher than 60°C (140°F).



DANGER OF EXPLOSION IF BATTERY IS INCORRECTLY RE-PLACED. TO REDUCE RISK OF FIRE OR BURNS, DO NOT DISASSEMBLE, CRUSH, PUNCTURE, SHORT EXTERNAL CONTACTS, HEAT ABOVE 100°C (212°F), OR DISPOSE OF IN FIRE OR WATER. REPLACE ONLY WITH SPECIFIED BATTERIES. RECYCLE OR DISPOSE OF USED BATTERIES ACCORDING TO THE LOCAL REGULATIONS OR REFERENCE GUIDE SUPPLIED WITH YOUR PRODUCT.

c) Exposure to Radio Frequency (RF) Signals

Your wireless phone is a radio transmitter and receiver. It is designed and manufactured not to exceed the emission limits for exposure to radio frequency (RF) energy set by the Federal Communications Commission of the U.S. Government. These limits are part of comprehensive guidelines and establish permitted levels of RF energy for the general population. The guidelines are based on the safety standards previously set by both U.S. and international standards bodies:

- American National Standards Institute (ANSI) IEEE. C95.1-1992
- National Council on Radiation Protection and Measurement (NCRP). Report 86. 1986

- International Commission on Non-Ionizing Radiation Protection (ICNIRP) 1996
- Ministry of Health (Canada), Safety Code 6. The standards include a substantial safety margin designed to assure the safety of all persons, regardless of age and health.

The exposure standard for wireless mobile phones employs a unit of measurement known as the Specific Absorption Rate, or SAR. The SAR limit set by the FCC is 1.6W/kg*.

*In the U.S. and Canada, the SAR limit for mobile phones used by the public is 1.6 watts/kg (W/kg) averaged over one gram of tissue. The standard incorporates a substantial margin of safety to give additional protection for the public and to account for any variations in.

d) SAR Information

THIS MODEL DEVICE MEETS THE GOVERNMENT'S REQUIREMENTS FOR EXPOSURE TO RADIO WAVES.

Your wireless mobile GSM phone is a radio transmitter and receiver. It is designed and manufactured not to exceed the emission limits for exposure to radio frequency (RF) energy set by the Federal Communications Commission of the U.S. Government. These limits are part of comprehensive guidelines and establish permitted levels of RF energy for the general population. The guidelines are based on the safety standards previously set by both U.S. and international standards bodies:

- American National Standards Institute (ANSI) IEEE. C95.1-1992
- National Council on Radiation Protection and Measurement (NCRP). Report 86. 1986
- International Commission on Non-Ionizing Radiation Protection (ICNIRP) 1996

■ Ministry of Health (Canada), Safety Code 6. The standards include a substantial safety margin designed to assure the safety of all persons, regardless of age and health.

The exposure standard for wireless mobile GSM phone employs a unit of measurement known as the Specific Absorption Rate, or SAR. The SAR limit set by the FCC is 1.6W/kg*.

For body worn operation, this phone has been tested and meets the FCC RF exposure guidelines when used with an accessory that contains no metal and that position the antenna of the GSM phone a minimum of 1.5cm from the body. The SAR values of this GSM phone are 0.726W/g (body) and 0.362W/g (head). Use of other accessories may not ensure compliance with the FCC RF exposure guidelines.

The FCC has granted an Equipment Authorization for this model device with all reported SAR levels evaluated as in compliance with the FCC RF exposure guidelines. SAR information on this model device is on file with the FCC and can be found under the Display Grant section of <http://www.fcc.gov/oet/fccid> after searching on FCC ID: NM8 HIMALAYAS. Additional information on Specific Absorption Rates (SAR) can be found on the Cellular Telecommunications & Internet Association (CTIA) website as <http://www.devicefacts.net>.

* In the U.S. and Canada, the SAR limit for mobile GSM phone used by the public is 1.6Watts/kg (W/kg) averaged over one gram of tissue. The standard incorporates a substantial margin of safety to give additional protection for the public and to account for any variations in.

Microsoft, ActiveSync, Outlook, Pocket Outlook, Windows, Windows NT, and the Windows logo are either registered trademarks or trademarks of Microsoft Corporation in the United States and/or other countries.