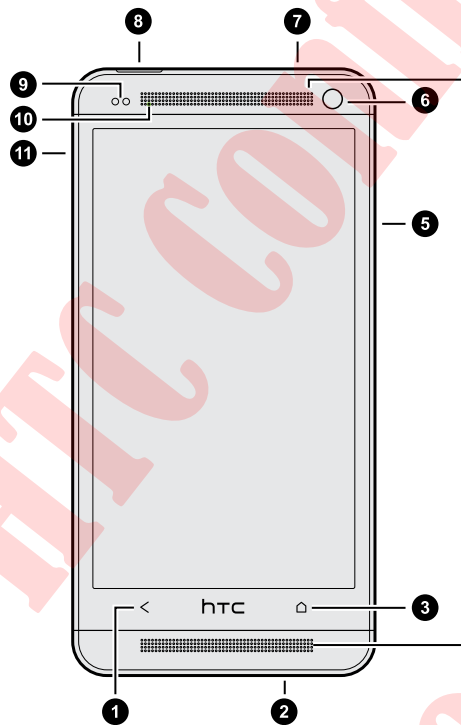


Unboxing

HTC One



1. BACK
2. USB connector
3. HOME
4. Dual speakers
5. VOLUME
6. Front camera
7. 3.5mm headset jack
8. POWER
9. Proximity sensor
10. Notification LED
11. Tray eject hole/SIM card tray

! If you want to use a screen protector, please don't cover and block the proximity sensor. You can purchase the dedicated screen protector for HTC One that already has a small opening for the sensor.

microSIM card

HTC One uses a microSIM card. The microSIM card contains your phone number, service details, and memory for storing phonebook contacts and/or text messages.



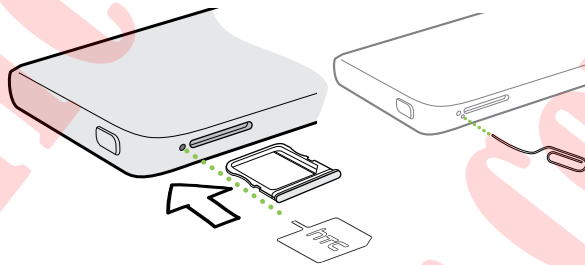
The microSIM card may be preinstalled on HTC One. When you need to remove or replace the microSIM card, refer to the following instructions.

Inserting the SIM card

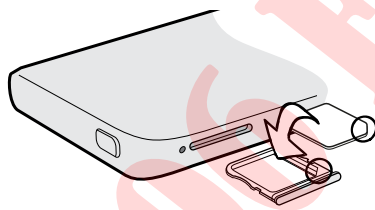


Use a standard microSIM only. Inserting other types (such as nanoSIM with an adapter or a modified SIM) may cause the card to not fit properly or damage the card slot.

1. Hold the phone face up.
2. Insert the tip of the SIM eject tool (or a small bent paperclip) into the small hole next to the SIM card tray slot.



3. Push the tip all the way into the hole until the SIM card tray ejects.
4. Pull the SIM card tray out, and place the SIM card (contacts facing down) into the tray.



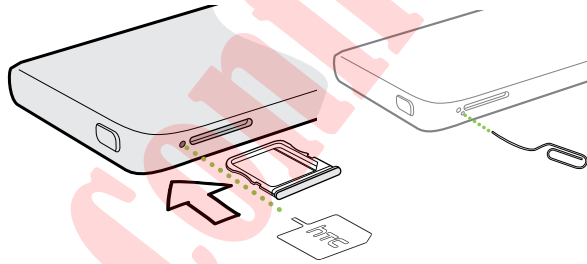
5. Insert the SIM card tray back into the slot.

Removing the SIM card



Make sure to switch off HTC One before removing your SIM card.

1. Hold the phone face up and the top panel facing you.
2. Insert the tip of the SIM eject tool (or a small bent paperclip) into the small hole next to the SIM card tray slot.




3. Push the tip all the way into the hole until the SIM card tray ejects.
4. Pull the SIM card tray out, and remove the SIM card.

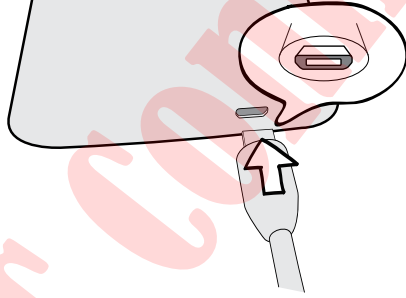
After removing the SIM card, make sure that you insert the empty SIM card tray back into the slot.

Charging the battery

Before you turn on and start using HTC One, it is recommended that you charge the battery.

 Use only the adapter and the USB cable that came with HTC One to charge the battery.

1. Insert the small end of the USB cable into the USB connector.



2. Insert the other end of the USB cable into the power adapter.
3. Plug in the power adapter to an electrical outlet to start charging the battery.



As a safety precaution, the battery stops charging if it overheats.

Switching the power on or off

Switching the power on

Press the POWER button.



When you turn on HTC One for the first time, you'll need to set it up.

Switching the power off

1. If the display is off, press the POWER button to turn it back on. If your screen is protected with a lock screen, you need to unlock it.
2. Press and hold the POWER button for a few seconds.
3. Tap **Power off** on the options menu.

Setting up your phone

Setting up your new phone for the first time

When you switch on your new phone for the first time, you'll be asked to set it up.



You can enable TalkBack to navigate by spoken feedback before selecting the language. Draw a square in the clockwise direction on the screen and then tap **OK**. To find out more, see [Navigating HTC One with TalkBack](#) on page 167.

Walk through the on-device setup to choose your Internet connection, select how you want to set up your new phone, and more.

- Select **Set up from scratch** to set up your accounts and personalize your new phone from your computer using the HTC Get Started service.

Your phone shows you the URL of the HTC Get Started site and a pair code. On your computer's web browser, just go to the URL and enter the pair code to start your web setup. You need an HTC Account to save your accounts and settings on the Web and download them to your phone.
- If you already finished the HTC Get Started setup before turning on your new phone, just download your web setup. Choose to import content, and then select **Apply HTC Get Started setup**.
- If you have content from an old phone, you can choose to do a direct phone-to-phone transfer.
- To make it easier for you to back up and restore content from HTC One to another HTC phone in the future, select **Back up phone daily**.



- To find out more about HTC Get Started and HTC Account, see the Help and FAQ on the HTC Get Started site (www.htcsense.com/help/).
- If you transferred content such as wallpaper and ringtone from an old phone, using HTC Get Started to personalize and download the same content types from the Web will change your settings on your new phone.
- Some features that need to connect to the Internet such as location-based services and auto-sync of your online accounts may incur extra data fees. To avoid incurring data fees, disable these features under Settings.

Transferring content from an Android phone

On your old Android™ phone, download the HTC Transfer Tool and use it to transfer your content to your new HTC phone. The types of locally stored content on your old phone that the tool can transfer include contacts, messages, calendar events, web bookmarks, music, photos, and videos. Some settings can also be transferred.



- You need Android version 2.3 or later to use the HTC Transfer Tool on your old phone.
- If your old phone has Android version 2.2 or an earlier version, you need to use Bluetooth® transfer. For details, see [Transferring contacts from your old phone through Bluetooth](#) on page 14.

1. Do one of the following:
 - If you're setting up your new HTC phone for the first time, choose to transfer content, and then select **Transfer from old phone** on the Set up phone screen.
 - Go to Settings, and then tap **Transfer content**.
2. Choose whether to transfer from an old HTC phone or other Android phone.
3. Tap **Full transfer**.
4. Follow the steps shown on your new phone to download the HTC Transfer Tool from Google Play™ to your old phone, install it, and open the tool.
5. When you see a PIN on your old phone, make sure the same PIN also appears on your new phone before you continue.



If the PIN code doesn't appear, this may mean that your old phone is unable to connect to your new phone. If this happens, tap **Unable to establish a connection** on your new phone to use Bluetooth for transferring contacts from your old phone.

6. On your old phone, choose the types of content you want to transfer, and then tap **Start**.
7. Wait for the transfer to finish.
8. Tap **Done** on both phones.

Transferring content from an iPhone

If you have an iPhone®, it's fast and easy to transfer your contacts, messages, and other content when you use HTC Sync Manager.

To find out how, see [Transferring iPhone content to your HTC phone](#) on page 111.

If you only need to migrate your contacts, you can also use Bluetooth transfer. For details, see [Transferring contacts from your old phone through Bluetooth](#) on page 14.

Transferring contacts from your old phone through Bluetooth

Use Bluetooth to transfer contacts from an iPhone, a phone that has Android version 2.2 (or earlier version), or other types of phones. Depending on the capabilities of your old phone, you may be able to transfer not only contacts but also other data such as calendar events and text messages to your new HTC phone.



Use HTC Sync Manager to transfer more types of content from an iPhone.

1. Do one of the following:
 - If you're setting up your new phone for the first time, choose to transfer content, and then select **Transfer from old phone** on the Set up phone screen.
 - Go to Settings, and then tap **Transfer content**.
2. Choose whether to transfer from an Android phone, iPhone, or other phone types. If you chose to transfer from an Android phone, tap **Quick transfer**.
3. Choose your old phone's name and model.
4. On your old phone, turn Bluetooth on and set it to discoverable mode.
5. Follow the onscreen instructions on your old and new phones to pair them and start the data transfer.

Getting contacts and other content into HTC One

Aside from the HTC Transfer Tool, there are other ways you can add contacts and other content to HTC One.

Sync with your computer	Use HTC Sync Manager to sync contacts, documents, playlists, and more between HTC One and your computer running a Windows® or Mac OS® operating system. You can also use it to transfer contacts, messages, and other content from an iPhone to your computer, and then to your HTC One.
Gmail™	Google® contacts are imported to HTC One after you sign in to your Google Account. You can also create more Google contacts right from HTC One.
Social network accounts	Log in to your favorite social networks to sync contact information from them.
Microsoft® Exchange ActiveSync®	HTC One syncs your work contacts from the Microsoft Exchange ActiveSync Server in your workplace.
Phone contacts	You can create contacts locally on HTC One, if you don't prefer to store them on your online accounts.
SIM card	Copy all your SIM contacts to HTC One.

Transferring photos, videos, and music between your phone and computer

There are two ways you can transfer your media from or to your computer.

- Connect HTC One to your computer. Your computer will recognize it just like any removable USB drive, and you can copy your media between them.
- Download and use the HTC Sync Manager software on your computer. You can set it up to automatically get music, photos, and videos off HTC One to your computer. You can also sync playlists from your computer to the phone.

If you have an iPhone, you can even connect it and transfer the camera roll (photos and videos) to your computer. Then reconnect HTC One and copy them over.

Tired of keeping copies of your media in several places? Use online storage services to put your media in one place so you can manage them anywhere — on your computer, HTC One, and other mobile devices.

Go to Settings, and then tap **Accounts & sync** > **+** to check first what online storage accounts are available on HTC One and sign in to the one you want to use. Use the Gallery app to access media in your online storage.

Home screen

Your Home screen is where you make HTC One your own.



- After you've turned on and set up HTC One, you'll see the Feeds view as the main Home screen. Customize it to show posts from your social networks, headlines from your favorite news media, and more. For details, see [Checking feeds on your Home screen](#) on page 28.
- You can change the apps on the launch bar at the bottom of the Home screen. See [Personalizing the launch bar](#) on page 59.
- Swipe left and you'll discover another Home screen panel for adding your favorite apps, widgets, and more so they're just a tap away. And if you need more Home screen panels, you can add more. For details, see [Personalizing](#) on page 56.



Press  to return to the main Home screen.

Getting to know your settings


Want to change the ringtone, set up a Wi-Fi® connection, add your accounts, or make HTC One more secure? Do this and more in Settings.

1. Open Settings either from the Quick settings panel or All apps view.
 - With two fingers, swipe down from the status bar to open Quick settings, and then tap .
 - From the Home screen, tap  to switch to All apps view, and then tap **Settings**.
2. Here are some of the basic settings you can change:
 - Tap the **On/Off** switch next to an item such as Wi-Fi to turn it on or off. Tap the item itself to configure its settings.
 - Tap **Sound** to set a ringtone, choose a sound profile, and configure incoming call sound settings.
 - Tap **Personalize** to change the Home screen wallpaper, lock screen style, and more.
 - Tap **Accounts & sync** to add and sign in to your different accounts, such as email, social networks, and more.
 - Tap **Security** to secure HTC One, for example with a screen lock.

Updating your phone's software

HTC One can check and notify you if there's a new update available. You can also manually check if there's an available update.

Installing a software update


When Internet connection is on and there's a new software update available, the update notification icon  appears in the status bar.

1. Slide the Notifications panel open, and then tap the system update notification.
2. If you don't want to download the update using your data connection, select **Update over Wi-Fi only**.
3. Tap **Download**.
4. When download is complete, select **Install now**, and then tap **OK**.

After updating, HTC One will restart.

Installing an application update

When Internet connection is on and there's an available update for your HTC or mobile operator apps, the update notification icon  appears in the status bar.

1. Slide the Notifications panel open, and then tap the update notification.
The Updates screen opens with the list of application updates to be installed.
2. Tap an item to view its details, and then tap .
3. When you're done reviewing the updates, tap **Install**. You'll be asked to restart HTC One if needed.

Checking for updates manually

1. Go to Settings, and then tap **About**.
2. Tap **Software updates**. HTC One checks if updates are available.



If you don't have Internet connection, you'll be prompted to turn on mobile data or connect to a Wi-Fi network. Once connected, tap **Check now** to check for updates.

Your first week with your new phone

About your phone

Features you'll enjoy on HTC One

HTC One gives you options for quick and easy setup. Transferring your old phone's content such as your contacts, messages, and media can be done right from HTC One. On this phone, enjoy taking shots with the camera, checking personalized content with HTC BlinkFeed™, and more.

Easy phone setup and transfer

- With our HTC Get Started service, you can set up and personalize HTC One from your computer, and just download your settings to HTC One. See [Setting up your new phone for the first time](#) on page 12.
- Easily transfer your contacts, messages, music, photos, videos, and more from an Android phone to HTC One. See [Transferring content from an Android phone](#) on page 13.

By using **HTC Sync Manager**, you can even migrate content from an iPhone. See [Transferring iPhone content to your HTC phone](#) on page 111.

- Back up HTC One to the cloud so it'll be a lot easier to restore your content to a new phone next time. See [Using HTC Backup](#) on page 107.

Live Home screen

With **HTC BlinkFeed**, personalize your Home screen with the information and updates that matter most to you. See a variety of content such as feeds about news and your interests, social network updates, and more. The content is constantly refreshed when you're connected to the Internet. See [Checking feeds on your Home screen](#) on page 28.

HTC Zoe

Experience a whole new way of capturing and retouching photos.

- Capture entire moments with pictures and sound, and watch them come alive again with **HTC Zoe™**. See [Taking HTC Zoe photos](#) on page 44.
- Retouch your HTC Zoe photos or continuous shots with **Object Removal**, **Always Smile**, and **Sequence Shot**. See [Camera and Gallery](#) on page 41.

New way to share memories

Create highlight videos without editing or share your photos to friends and family on the fly.

- Show off the excitement of your event. **Video Highlights** automatically selects the highlights of an event from your photos to create a half-minute show with a musical theme. See [Viewing the highlights of an event](#) on page 48.
- HTC Share brings together your best photos, regular photos, and a highlight video so that you can easily share your memories with friends and family. See [Sharing memories through HTC Share](#) on page 54.

Outstanding camera features

- With **VideoPic™**, you can snap a picture while you're shooting video. See [Taking a photo while recording a video \(VideoPic\)](#) on page 43.
- Switch to **Sweep panorama** mode and pan the camera to capture a wide-angle view of the scenery. See [Taking a panoramic photo](#) on page 45.
- Use **Continuous shooting** mode to capture 20 consecutive shots (or more) of a subject in motion. See [Taking continuous camera shots](#) on page 43.
- By just tapping the shutter button, take three shots of your subject at different exposures and combine them into a nice, evenly exposed photo. Use either the main or front camera to capture HDR photos.

With the main camera, you can also record HDR videos with authentic sound quality.

See [Using HDR](#) on page 45.

- With **Variable Speed Playback**, add a cinematic flair to your videos by slowing down particular scenes. See [Changing the video playback speed](#) on page 47.

Immerse in music

- Built-in high quality Beats Audio™ gives you a rich, authentic sound experience, whether you're listening to music, watching a video, or playing a game. To find out more, see [Making your music sound better](#) on page 86.
- In our HTC Music app, you'll see a visual animation while you're playing a song. And if lyrics are available, they'll show onscreen.

Entertainment with HTC Sense TV

HTC Sense TV™ brings entertainment to your phone and extends it to your TV. You can:

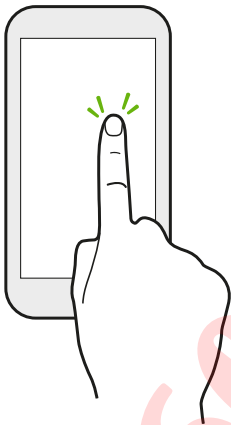
- Access your TV program guide with the TV app. With just one tap, watch a program on your home TV. See [Enjoying TV with HTC One](#) on page 89.

You can also turn HTC One into a remote control for your TV, set-top box (cable box), and home theater. See [Setting up your remote control](#) on page 91.

- Use HTC Media Link HD to wirelessly share your media from HTC One to your HD TV. See [Sharing on a big screen](#) on page 93.

Use touch gestures to get around the Home screen, open apps, scroll through lists, and more.

Tap



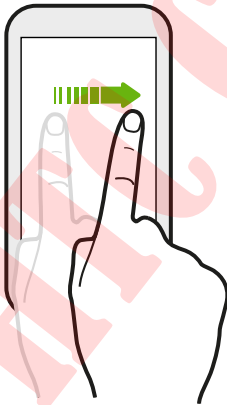
- Tap the screen with your finger when you want to select onscreen items such as application and settings icons, or press onscreen buttons.
- After you've scrolled down a long list or screen (in apps such as Mail and People), tap the status bar to jump straight to the top of your screen.

Press and hold



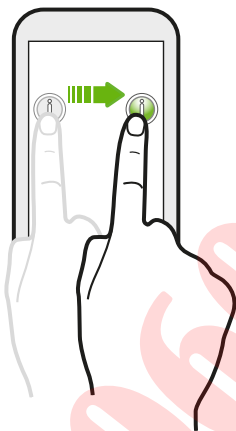
To open the available options for an item (for example, a contact or link in a webpage), just press and hold the item.

Swipe or slide



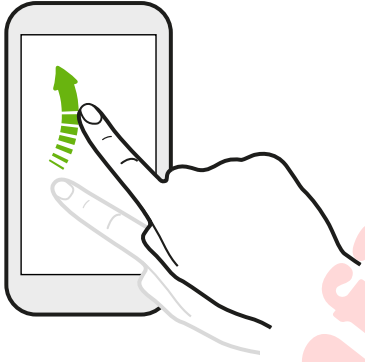
Quickly swipe your finger vertically or horizontally across the screen to go to other Home pages, scroll through documents, and more.

Drag



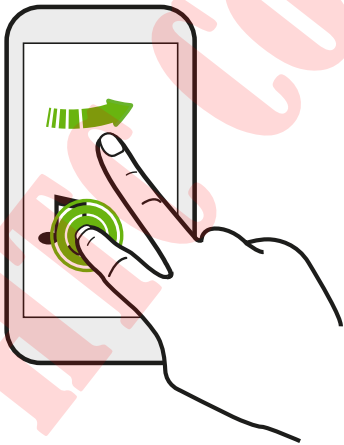
Press and hold your finger with some pressure before you start to drag. While dragging, don't release your finger until you have reached the target position.

Flick



Flicking the screen is similar to swiping, except that you need to swipe your finger in light, quicker strokes, such as when moving right and left on the Home screen, or flicking through a contacts or message list.

Press and flick



On the Home screen, you can easily move a widget or icon from one screen to another.

Press and hold the widget or icon with one finger, and flick the screen to the new location with another finger.

Pinch and spread

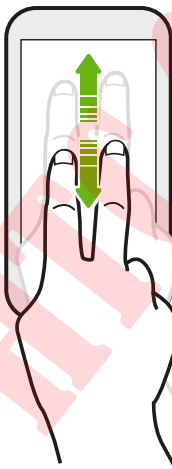


In some apps, like Gallery, Messages, Mail, or the web browser, spread your fingers on the screen to zoom in when viewing a picture or text.



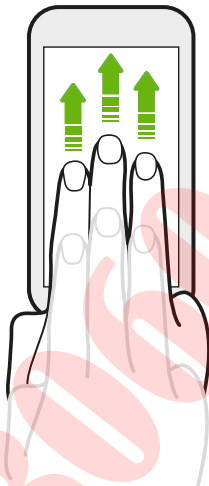
Pinch the screen to zoom out of the picture or text.

Two-finger swipe



- Swipe down from the status bar using two fingers to access Quick settings.
- In some apps that have sorting, like Mail or People, swipe up or down using two fingers to scroll the screen. The screen displays the sorting order, and you can easily scroll to the information you want.

Three-finger gesture



- Swipe up using three fingers to share content such as photos, videos, and music from HTC One to your TV or speakers.
- While using the HTC Car app, tap the screen with three fingers to activate the voice command mode.



- **HTC gestures** is enabled by default, which makes the three-finger gesture work only when sharing content or using HTC apps.
- You need to hook up the HTC Media Link HD (sold separately) to your HDMI TV to share content.

Can't use multi-finger gestures in your apps?

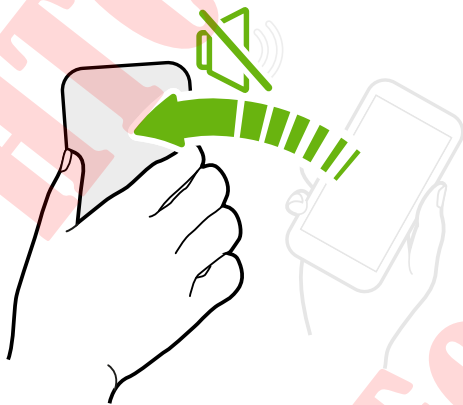
That's because **HTC gestures** is enabled by default. This makes the three-finger gesture exclusive for sharing content or for use with HTC apps. You won't be able to use multi-finger gestures (gestures that use three fingers or more) for other purposes.

To use multi-finger gestures in games or musical instrument apps, clear the **HTC gestures** option in **Settings > Display, gestures & buttons** (or **Display & buttons**).

Motion gestures

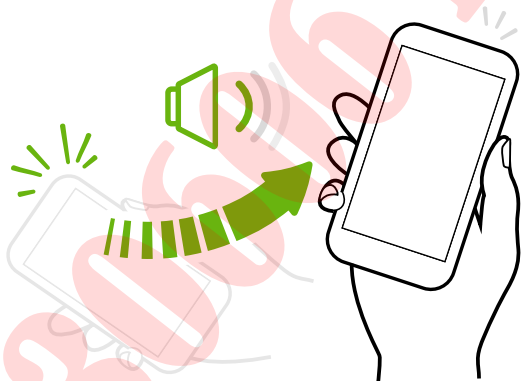
Use motion gestures to mute, lower the ringtone volume, and more.

Flip to silence



When a call comes in you can turn HTC One over to mute it.

Pick up to lower volume



In a business meeting or restaurant, pick HTC One up when a call comes in to lower the ringtone volume.

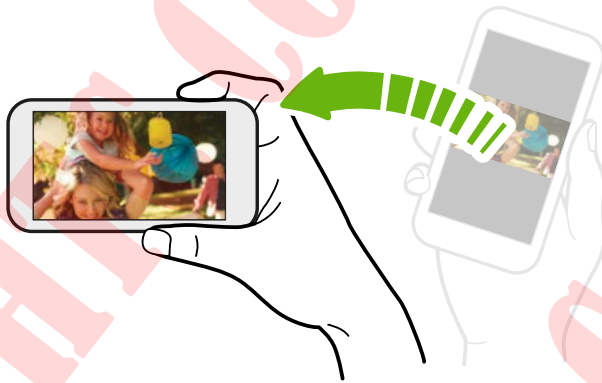
Set volume to automatically rise while in your pocket or bag



On a noisy street and can't hear HTC One ringing in your bag?

You can set HTC One to recognize when it's in your bag or pocket and raise the ringtone volume so that you can hear it in noisy environments.

Rotate HTC One for a better view



For many screens, you can automatically change the screen orientation from portrait to landscape by turning HTC One sideways.

When entering text, you can turn HTC One sideways to bring up a bigger keyboard.

Sleep mode

Sleep mode saves battery power by putting HTC One into a low power state while the display is off. It also stops accidental button presses when HTC One is in your bag.

Switching to Sleep mode

Briefly press the POWER button to turn off the display and switch to Sleep mode. HTC One also automatically goes into Sleep mode when it's left idle for a while.

You can change the time before HTC One sleeps in the **Display, gestures & buttons** (or **Display & buttons**) settings.

Waking up from Sleep mode

To wake HTC One up manually, press the POWER button. If your screen is protected with a lock screen, you need to unlock it.



HTC One automatically wakes up when you have an incoming call.

Unlocking the screen

You can:

- Drag the lock icon or clock up.



- Swipe up from an empty space on the lock screen.

If you've set up a screen lock, you'll be asked to provide your credentials before HTC One unlocks.



If you've set an event reminder or an alarm, you can snooze or dismiss the event or alarm right from the lock screen. Just drag ⌚ or ⓧ up.

Opening an app

- Tap an app on the launch bar at the bottom of the Home screen.
- To see more apps, tap . Then tap the app you want to use.

Opening an app or folder from the lock screen

- On the lock screen, drag an app or folder icon up to unlock the screen and directly go to the app or folder.



The shortcuts on the lock screen are the same ones on your Home screen's launch bar. To change the lock screen shortcuts, replace the apps or folders on the launch bar.

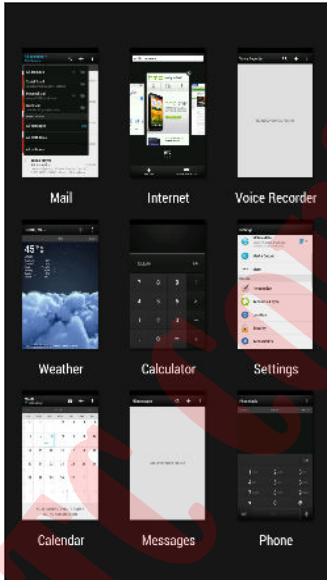
- When there's a notification or info shown on the lock screen such as a missed call or new message, you can drag it up to directly go to its app.

If you've set up a screen lock, you'll be asked to provide your credentials first before HTC One opens the app or folder.

Switching between recently opened apps

When you're multitasking and using different apps on HTC One, you can easily switch between the apps you've recently opened.

Double-tap  to see recently-opened apps.



- To switch back to an app, just tap it.
- To remove an app from the list, drag it up.

Refreshing content

In some apps, you can easily refresh content that's synced or downloaded from the Web with a simple finger gesture.

1. While viewing content such as weather, stocks, or Mail inbox, scroll to the top of the screen.
2. Pull down with your finger, and then release to refresh.

Using Quick Settings

Tap the tiles in Quick settings to easily turn on Wi-Fi, Bluetooth, and more. You'll also find a few shortcuts, such as for viewing your profile in the People app.

With two fingers, swipe down from the status bar to open Quick settings.

Miss having a Menu button?

You can set the Home button to open the Menu.



1. Go to Settings, and then tap **Display, gestures & buttons** (or **Display & buttons**).
2. Tap **Home button** and select how you want to open the Menu, which is to press and hold the button.

Capturing your phone's screen

Want to show off your high game score or write a blog post about HTC One features? It's easy to take a picture of the screen and share it from Gallery.

Press and hold POWER and VOLUME DOWN at the same time.



To share the image, wait until you see the  icon in the status bar. Slide the Notifications panel open, and then under the Screenshot captured notification, tap .

The image is saved in the Screenshots album in Gallery.



Home screen feeds


Checking feeds on your Home screen


Stay in touch with friends or get the latest about your interests right on your Home screen. Set up which social networks, news sources, and more will appear. HTC One refreshes the stream every time you return to the Home screen.

- Tap a tile to view more details or to comment on a post or status update.
- Scroll to the top and pull down on the screen to manually refresh the stream. This also shows icons for posting on social networks, searching, and more.



If the Feeds view is set as the main screen, you can press either the  button or  button or tap the status bar to scroll to the top.

- Tap  to choose the type of feeds to display. Select Highlights to see other contents such as upcoming events, frequently-viewed photos in Gallery, and more.

You can manually set which feeds will appear as highlights by tapping  next to **Highlights** and selecting your favorite news sources, social networks, and apps.


Your social networks

When you sign in to your social network accounts and authorize HTC Sense to access them, you can:

- Post status updates from the Home screen when using the Feeds view.
- See your contacts and their status updates in People.
- See photos in Gallery or on the Home screen.
- Check your friends' status updates and posts on the Home screen when using the Feeds view.
- View events and reminders in Calendar.

Posting an update on your social network

You can easily post a status update from the Home screen.

1. From the Feeds view, tap , and then choose a social network.
2. Compose your status update and post it on your social network.

Where is the header?

The header contains icons for posting on social networks, searching feeds, and more.




If the icons don't show, you can do either of the following:

- While browsing the first page of feeds, just pull down the screen.
- While browsing succeeding pages, pull down and hold the screen. Wait for the icons to appear and then release your finger.

Selecting feeds

Get updated with the most relevant content and posts with just a swipe. Choose which feeds to display on the Home screen. You can select popular news channels and websites or choose a category like Entertainment. You can also show posts from friends in social networks or information from apps such as Calendar.


1. From the Feeds view, tap  > **Topics and services**.
2. Select feeds from apps, types of content, and social networks that will display on the Home screen. Swipe left or right for more choices.



Content from feeds that have just been added may take a few minutes to appear on the Home screen.

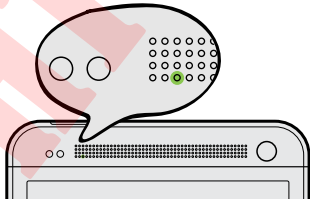
Can I subscribe to a different news source or channel?

Feeds from news channels and web sites displayed on the Home screen are set by a local content guide. To see a different list of news sources, change the local content.

1. From the Feeds view, tap  > **Settings**.
2. Tap **Local content**.
3. Select the local content you want to use, and tap **Next**.
4. Select news sources and categories that you want.

Notifications

Notification LED



The notification LED shows a:

- Solid green light when HTC One is connected to the power adapter or a computer and the battery is fully charged.
- Flashing green light when you have a pending notification.
- Solid orange light when the battery is being charged.
- Flashing orange light when the battery level reaches very low.

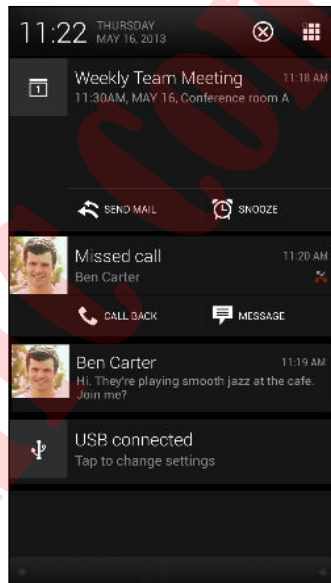
Notifications panel

Notification icons inform you of new messages, calendar events, alarms, and activities in progress such as files downloading.




When you see notification icons, open the Notifications panel to check out details of the notifications that you've received. You can also quickly access settings from the Notifications panel.

1. To open the Notifications panel, slide down from the top of the screen.



If you have several notifications, scroll down the screen to see them all.

2. On the Notifications panel:
 - You can expand certain notifications to see more information, such as email previews and calendar events. Spread with your two fingers to expand a notification, or pinch to collapse it.
 - You'll see icons in some notifications that allow you to take immediate actions. For example, when you have a missed call, tap the available icons to return the call or reply with a text message.
 - Tap the notification icon on the left to open the corresponding app.
 - To dismiss just one notification in the list, drag it left or right.
3. To close the Notifications panel, slide up from the bottom bar of the panel or press .

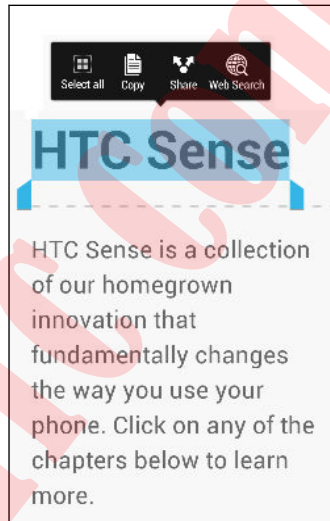
You can also tap  to dismiss all notifications and close the Notifications panel.

Working with text

Selecting, copying, and pasting text

In apps such as the web browser and Mail, you can select and copy text, and then paste or share it.

1. Press and hold on a word.
2. Drag the start and end anchors to highlight the surrounding text you want to select.



You can use the magnifier to zoom in while selecting your text. To turn on the magnifier, go to **Settings > Accessibility**, and then select the **Show magnifier** option. You'll see the magnifier when you tap one of the text selection anchors.

3. After you have selected the text you want to copy, tap **Copy**.
The selected text is then copied to the clipboard.
4. In a text entry field (for example while composing an email), press and hold at the point where you want to paste the text.
5. Tap **Paste**.



To copy the address of a linked webpage, press and hold the link, and then tap **Copy link URL**.

Sharing text

1. After you have selected the text you want to share, tap **Share**.
2. Choose where to paste and share the selected text, such as in an email message or social network status update.

The HTC Sense keyboard

Typing is fast and accurate with the HTC Sense keyboard.

- Turn on the Trace keyboard so you can type words by just sliding your finger from one letter to another. See [Using the Trace keyboard](#) on page 36.
- You can type words by just speaking. See [Entering text by speaking](#) on page 36.
- Word prediction also saves typing time. As you type, you'll see word suggestions that you can choose from. You can even add words, phrases, and shortcuts to the word prediction dictionary. See [Entering text with word prediction](#) on page 34.
- Just swipe right to access the numeric and symbol keyboard. Or swipe left to switch between languages.
- The keys have secondary numbers, punctuation symbols, or other characters that you can quickly insert without having to switch to the numeric and symbol keyboard.

For example, just press and hold a key on the first row to insert a number.



- Choose from a selection of smileys and insert one right from the keyboard.
- Show or hide navigational arrow keys on the keyboard. If you enable the arrow keys in Settings, they'll only appear on the portrait keyboard.

And since everyone has their own typing style, you can go to Settings to calibrate the keyboard so it learns how you type.

Entering text

The onscreen keyboard becomes available when you tap a text field in an app. Enter letters and numbers, change the keyboard layout or language, and more.

Tap the keys on the onscreen keyboard to enter letters and numbers, as well as punctuation marks and symbols.

- Tap  to enter an uppercase letter. Tap twice to turn on caps lock.
- Press and hold keys with gray characters at the top to enter numbers, symbols, or accented letters. Some keys have multiple characters or accents associated with them.
- Swipe right to show number and symbol keys. To return to the main keyboard, swipe left.
- Press  to close the onscreen keyboard.



To open the keyboard settings, press and hold the comma key. Or go to **Settings > Language & keyboard > HTC Sense Input**.

Selecting a keyboard layout

Choose a keyboard layout that suits your typing style.

1. Go to Settings, and then tap **Language & keyboard**.
2. Tap **HTC Sense Input > Keyboard selection**.
3. Tap **Keyboard types**, and then select the keyboard layout that you want to use.

Choosing and switching between keyboard languages

If multiple keyboard languages are available on HTC One, you can choose which languages to enable in the onscreen keyboard.

1. Go to Settings, and then tap **Language & keyboard**.
2. Tap **HTC Sense Input**.
3. Tap **Keyboard selection**, and then choose the languages you want.

To change the keyboard language, do any of the following:

- Swipe left on the onscreen keyboard (not available if you're using trace keyboard).
- Tap the language key (for example, **EN**) until you see the language you want to use.
- Press and hold the language key, and then drag your finger to the keyboard language you want to use.

Entering text with word prediction

Word prediction is enabled by default, and word suggestions are displayed as you type.



Tap **XT9** to switch between Multitap and XT9 predictive modes when using the Phone keyboard layout.

To enter text in word prediction mode, do any of the following:

- Tap the space bar to insert a highlighted word in the suggestion list.
- Tap a word from the suggestion list.
- Tap the arrow next to the suggestion list to see more choices.



You can also see suggestions for the next word after you've entered text. To enable this option, go to **Settings > Language & keyboard > HTC Sense Input**. Tap **Advanced**, and then select **Next word prediction**.

Setting a second language for word prediction

You can set the word prediction to be bilingual. As you type, you'll get word suggestions in the languages that you've selected.



Bilingual prediction is available only when you're using a Latin-based keyboard.

1. Go to Settings, and then tap **Language & keyboard**.
2. Tap **HTC Sense Input > Keyboard selection > Bilingual prediction**, and then choose the language you want.

Adding words and phrases to the word prediction dictionary

Add frequently-used names, acronyms, and even phrases to the word prediction dictionary to easily find them in the suggestion list.

Type even faster when you create text shortcuts to words and phrases. Instead of typing "Talk to you later", save a few keystrokes by adding the ttyl shortcut. In your message or email, just type "ttyl", and then tap the spacebar to enter the complete phrase.

1. Go to Settings, and then tap **Language & keyboard**.
2. Tap **HTC Sense Input**.
3. Tap **Personal dictionary > +**.
4. Enter a word or phrase, and then enter its text shortcut. Be sure to remember this shortcut, including the uppercase and lowercase letters you've typed.
5. Tap **OK**.



While you're entering text using the Standard keyboard layout, tapping a suggested word that's not in the dictionary (usually the first word shown in the suggestion list) automatically stores it.

Editing or deleting words and phrases in the word prediction dictionary

1. Go to Settings, and then tap **Language & keyboard**.
2. Tap **HTC Sense Input**.
3. Tap **Personal dictionary**.
 - To edit a word, phrase, or shortcut, tap the item in the list.
 - To delete items from the dictionary, tap **⋮ > Delete**. Select the words you want to remove, and then tap **Delete**.

Using the Trace keyboard

Instead of tapping the keys on the onscreen keyboard, you can "trace" to type words.




You need to turn on the Trace keyboard in **Settings > Language & keyboard > HTC Sense Input**.

1. Slide your finger from one letter to the next to enter a word.
2. Lift your finger when the word is completed. The suggestion list will show possible matches.
3. You can:
 - Tap the space bar to insert a highlighted word.
 - Tap a word from the suggestion list.
 - Tap the arrow next to the suggestion list to see more choices.

Entering text by speaking

No time to type? Try speaking the words to enter them.

1. Tap an area where you want to enter text.
2. On the onscreen keyboard, press and hold .
3. When you see the microphone image, speak out the words you want to type.



To set the voice input language, tap the language bar above the microphone image. You can choose one or more languages. Available languages depend on the voice input languages supported by Google.

4. If a word doesn't match what you've spoken and it's underlined, tap the underlined word to delete it or to see more choices.
5. Enter punctuation marks by saying the name (for example, say "comma").

Battery

Checking battery usage

See a ranking list of apps that are using the battery. You can also see how much and how long the battery has been used for each app.

1. Go to Settings, and then tap **Power**.
2. Tap **Usage**, and then tap an app to check how it's using the battery. You'll see how much battery power is used by resources such as the CPU for the app and other use details.



- If you see buttons while viewing an app's battery use details, you can tap them to adjust settings that affect battery usage, stop the app, and more.
- Want to check the battery percentage right on the status bar? In Power settings, select **Show battery level**.

Checking battery history

Check how long you've been using HTC One since the last charge. You can also see a chart that shows how long the screen has been on, and how long you've been using connections like the mobile network or Wi-Fi.

1. Go to Settings, and then tap **Power**.
2. Tap **History**.
3. If you've used HTC One for a long time since the last charge, swipe left or right to scale the graph that details battery usage over time.

You can also spread your fingers or pinch to scale the graph.

Getting the battery to last longer

How long the battery can last before it needs recharging depends on how you use HTC One. HTC One power management helps to increase battery life.

In times when you need to extend the battery life more, try out some of these tips:

Check your battery usage

Monitoring your battery usage helps you identify what's using the most power so you can choose what to do about it. For details, see [Checking battery usage](#) on page 37.

Manage your connections

- Turn off wireless connections you're not using.
To turn on or off connections such as mobile data, Wi-Fi, or Bluetooth, go to Settings and tap their **On/Off** switches.
- Turn GPS on only when a precise location is needed.
To prevent some apps from using GPS in the background, keep the **GPS satellites** setting off. Turn it on only when you need your precise location while using navigation or location-based apps. Go to Settings and tap **Location** to turn this setting on or off.
- If the **Sleep mode** option in **Settings > Power** is enabled, at low peak times, your phone will turn off the data connection after the screen has been off for 15 minutes and there's no network activity (no downloads, streaming, or data usage). The data connection resumes when you switch the screen back on.

Manage your display

Lowering the brightness, letting the display sleep when not in use, and keeping it simple helps save battery power.

- Use automatic brightness (the default), or manually lower the brightness.
- Set the screen timeout to a shorter time.
- Don't use a live wallpaper for your Home screen. Animation effects are nice to show off to other people but they drain your battery.

Changing your wallpaper to a plain, black background can also help a little. The less color is displayed, the less battery is used.

- Set the web browser to auto dim the screen while webpages load. Open the Internet app, and then tap **⋮ > Settings > Accessibility > Dim screen during page loading**.

For more details, see [Settings and security](#) on page 163 and [Personalizing](#) on page 56.

Manage your apps

- Install the latest software and application updates. Updates sometimes include battery performance improvements.
- Uninstall or disable apps that you never use.

Many apps run processes or sync data in the background even when you're not using them. If there are apps that you don't need anymore, uninstall them.


If an app came preloaded and can't be uninstalled, disabling the app can still prevent it from continuously running or syncing data. In **Settings > Apps**, swipe to the **All** tab, tap the app, and then tap **Disable**.

Limit background data and sync


Background data and sync can use a lot of battery power if you have many apps syncing data in the background. It's recommended not to let apps sync data too often. Determine which apps can be set with longer sync times, or sync manually.

- In Settings, tap **Accounts & sync** and check what types of data are being synced in your online accounts. When the battery is starting to run low, temporarily disable syncing some data.
- If you have many email accounts, consider prolonging the sync time of some accounts.

In the Mail app, select an account, tap  > **Settings** > **Sync, Send & Receive**, and then adjust the settings under Sync schedule.

- When you're not traveling from one place to another, sync weather updates of only your current location, rather than in all of your named cities. Open the Weather app, and then tap  > **Edit** to remove unneeded cities.
- Choose widgets wisely.

Some widgets constantly sync data. Consider removing the ones that are not important from your Home screen.

- In Play Store, tap  > **Settings**, and then clear **Auto-add widgets** to avoid automatically adding Home screen widgets whenever you've installed new apps. Also tap **Auto-update apps** > **Do not auto-update apps** if you're fine with updating apps from Play Store manually.

Other tips

To squeeze in a little bit more battery power, try these tips:

- Tone down the ringtone and media volume.
- Minimize the use of vibration or sound feedback. In Settings, tap **Sound** and choose which ones you don't need and can disable.
- Check your apps' settings as you may find more options to optimize the battery.

Using power saver mode

Power saver mode helps to increase battery life. It reduces the usage of phone features that drain the battery such as the display and data connection.

1. With two fingers, swipe down from the status bar to open Quick settings.
2. Tap the **Power saver** tile to turn power saver mode on or off.

If you want to choose which phone features to conserve power for, tap **•••** first before you turn power saver mode on.



If power saver mode's **Data connection** option is selected, HTC One automatically disconnects from the mobile network after 15 minutes when the screen is off and the data connection is idle (no download activity, streaming, or data usage). It reconnects and then disconnects periodically when the data connection is idle to save battery power.

Keep in mind though that the **Sleep mode** option for the data connection in **Settings > Power**, when enabled, overrides power saver mode.