

# Chapter 7

## Working With Company E-mails and Meeting Appointments

---

### 7.1 Synchronizing with the Exchange Server

To keep up-to-date with your company e-mails and meeting schedules while you're out of the office, you can connect your device to the Internet through Wi-Fi or a data connection and synchronize with your company's Exchange Server.

#### Setting up an Exchange Server connection

Before you can synchronize or access information on the Exchange Server, you need to set up an Exchange Server connection on your device. You need to get the Exchange Server name (must be Outlook Web Access server name), domain name, user name, and the password that you use at work from your network administrator and enter them on your device.

**Note** You can set up an Outlook e-mail account that synchronizes with the Exchange Server from the TouchFLO 3D Mail tab using Mail Setup. See "Mail" in Chapter 3 for details.

If you have not synchronized your device with your computer, follow these steps to set up an Exchange Server connection.

1. Tap **Start > All Programs > Messaging > Setup E-mail**.
2. Enter the **E-mail address** and **Password** for the e-mail account and select the **Save password** option. Tap **Next**.

3. Clear the **Try to get e-mail settings automatically from the Internet** option and tap **Next**.
4. In **Your e-mail provider**, select **Exchange server** and tap **Next**.
5. Tap **Next** again.
6. Select the **Attempt to detect Exchange Server Settings automatically** option and tap **Next**.
7. Enter the **Domain** name and tap **Next**.
8. In **Server address**, enter the Exchange Server address and tap **Next**.
9. Select the items that you want to sync with the Exchange Server.

- Tips**
- To change synchronization settings of an information item, for example, E-mail, select the item, then tap **Settings**.
  - To change the rules for resolving synchronization conflicts, tap **Menu > Advanced**.

#### 10. Tap **Finish**.

- Notes**
- If you synchronized e-mails with your computer before, open ActiveSync on your device, then tap **Menu > Add Server Source** to set up an Exchange Server connection. When prompted to select information types for synchronization, you must first clear the **E-mail** check box under the Windows PC item before you can select **E-mail** under Exchange Server.
  - To change Exchange Server settings, open ActiveSync on your device, and then tap **Menu > Configure Server**.

## Starting synchronization

Before you start synchronizing with the Exchange Server, make sure your device has been set up with a Wi-Fi or data connection to the Internet so that you can synchronize over the air. For more information about connections, see Chapter 8.

After you finish setting up an Exchange Server connection, your device automatically starts synchronization.

To manually start synchronization, tap **Start > Settings**, and then touch **Sync Data**.

**Note** If you connect your device to your office computer via a USB or Bluetooth connection, you can use this connection to the computer to “pass through” to the network and download Outlook e-mails and other information to your device.

## 7.2 Working With Company E-mails

Your device gives you instant access to your company e-mails and lets you manage your messages easier. Direct Push, Fetch Mail, Remote e-mail search, and e-mail flags are just some of the tools you can use to manage your e-mails.

**Note** Some messaging features depend on the Microsoft Exchange Server version used in your company. Check with your network administrator for the availability of these features.

### Automatic synchronization through Direct Push

**Direct Push** technology (push e-mail feature) enables you to receive new e-mails on your device as soon as they arrive in your Inbox on the Exchange Server. Items such as contacts, calendar and tasks are also immediately updated onto your device when these items have been changed or new entries have been added on the Exchange Server. To make Direct Push work, you need to have a Wi-Fi or data connection on your device.

You need to perform a full synchronization between your device and the Exchange Server before Direct Push can be enabled.

**Requirement** The Direct Push feature works for your device only if your Company is using Microsoft Exchange Server 2003 Service Pack 2 (SP2) with Exchange ActiveSync or later.

### To turn on Direct Push in Comm Manager

1. Tap **Start > Settings**, and then touch **Communications**.  
**Tip** You can also tap **Start > All Programs > Comm Manager**.
2. On the Comm Manager screen, touch the OFF/ON slider at the right side of the **Microsoft Direct Push** item.

### To turn on Direct Push in ActiveSync

1. Tap **Start > ActiveSync** and then tap **Menu > Schedule**.
2. Select **As items arrive** in the **Peak times** and **Off-peak times** boxes.

**Note** When Direct Push is off, you need to manually retrieve your e-mails.

## Scheduled synchronization

If you do not want to use Direct Push, you can set a regular schedule for synchronizing Outlook e-mail and information.

1. In ActiveSync on your device, tap **Menu > Schedule**.
2. Select from the available options to set the synchronization schedule.

**Tip** You can select a shorter interval in the **Peak times** box and a longer interval in the **Off-peak times** box, so that your e-mails are synchronized more frequently when you are working. To set the days and hours that make up your peak and off-peak times, tap the **peak times** link at the bottom of the screen.

## Instant download through Fetch Mail

The **Fetch Mail** feature downloads an entire e-mail immediately without the need for you to perform a full Send/Receive action. This limits the download to just the e-mail message that you want and helps save data cost.

**Requirement** Fetch Mail works for your device only if your company is using Microsoft Exchange Server 2007 or later.

1. Tap **Start > All Programs > Messaging > Outlook E-mail**.
2. Open an e-mail message.

3. By default, only the first few words of the message are shown. To download the whole e-mail, finger-scroll to the end of the message, then tap **Get the rest of this message**.
4. Wait for the remainder of the message body to download.

- Notes**
- For information about changing e-mail sync options such as setting the download size for e-mail, see "Customizing e-mail settings" in Chapter 6.
  - When you receive an e-mail that contains a link to a document such as a PDF or Microsoft Office document located on SharePoint or an internal file server, you can tap the link to view the document on your device. You can view the document only if you have a Microsoft Outlook account that synchronizes with Microsoft Exchange Server 2007 or later. Exchange Server must also be set up to allow access to SharePoint document libraries or internal file servers.

## Searching for e-mails on the Exchange Server

You can access e-mails that are not available on your device by searching your Microsoft Exchange Server mailbox. The search results are downloaded and displayed in a Search Results folder.

**Requirement** Your company must be using Microsoft Exchange Server 2007 or later.

1. Tap **Start > All Programs > Messaging > Outlook E-mail**.
2. Tap **Menu > Tools > Search Server**.
3. In the **Look for** text box, enter the search keyword.
4. Choose the date range of messages to search from.
5. In the **Look in** list, specify whether to search in the **Inbox**, **Sent Items**, or **All Folders**, and then tap **Search**.

**Tip** To clear the search results and return to the message list, tap **Menu > Clear Results**.

## Flagging your messages

Flags serve as a reminder for you to follow-up on important issues or requests contained in e-mail messages. Flagging messages, which has been a useful feature on desktop Outlook E-mail, can also be done in Outlook Mobile on your device. You can flag received e-mail messages on your device.

**Requirement**      Flags are enabled only if e-mails are synchronized with Microsoft Exchange Server 2007 or later. Flags are disabled or hidden if e-mails are synchronized with earlier versions of Microsoft Exchange Server.

### To flag or unflag a message

1. Tap **Start > All Programs > Messaging > Outlook E-mail**.
2. Open a message.
3. Tap **Menu > Follow Up** and select one of the following options:
  - **Set Flag** Mark the message with a red flag to remind yourself to follow it up.
  - **Complete Flag** Mark the message with a check mark to indicate that the issue or request in the e-mail is already completed.
  - **Clear Flag** Remove the flag to unmark the message.

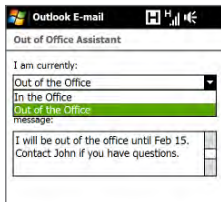
**Note**      E-mail message reminders are displayed on your device if the messages are flagged with reminders and synchronized from the Exchange Server.

## Out-of-office auto-reply

Outlook Mobile allows you to retrieve and change your out-of-office status. Just like desktop Outlook, Outlook Mobile automatically sends an auto-reply message when you're not available.

### To send out-of-office auto-reply messages

1. Tap **Start > All Programs > Messaging > Outlook E-mail**.
2. Tap **Menu > Tools > Out of Office**.
3. In the **I am currently** list, select **Out of the Office**.
4. Enter your auto-reply message, and then tap **Done**.



## 7.3 Managing Meeting Requests

When you schedule and send meeting requests from your device, you can invite attendees to your meeting and check their availability.

When you receive a meeting request, you can reply by accepting or declining the request. The meeting request also clearly indicates whether or not there are conflicting or adjacent meetings.

**Requirement** Your company must be using Microsoft Exchange Server 2007 or later.

### To reply to a meeting request

1. When you receive a meeting request e-mail, a notification is displayed on your device. Open the e-mail.
2. Tap **Accept** to reply and accept the meeting request, or tap **Menu > Decline** if you cannot attend the meeting.
  - Tips**
    - Before responding, you can check your availability during the time of the requested meeting by tapping **View your calendar**.
    - If the time of the meeting conflicts with your other appointments, a “Scheduling Conflict” status appears on top of the e-mail.
3. Choose whether or not to edit your response e-mail before sending, then tap **OK**.

If you accept the meeting request, it is automatically added as an appointment in Calendar on your device.

## 7.4 Finding Contacts in the Company Directory

In addition to having contacts on your device, you can access contact information from your organization's Company Directory. By having over-the-air access to the Company Directory, you can easily send e-mail messages and meeting requests to anyone in your company.

**Requirement** Access to the Company Directory is available only if your organization is running **Microsoft Exchange Server 2003 SP2 or higher**, and you have completed your first synchronization with the Exchange Server.

1. Synchronize with the Exchange Server.
2. Do any of the following:
  - In Contacts, tap **Menu > Company Directory**.
  - In a new e-mail message, tap the **To** box (or tap **Menu > Add Recipient**), and then tap **Company Directory** on the top of the list.
  - When creating a meeting request and selecting required and optional attendees in Calendar, tap **Company Directory**.
3. Enter a partial or full contact name and tap **Search**. In the search results list, tap a contact to select it.

**Notes**

- You can save a contact from the Company Directory to your device by selecting the contact, and then tapping **Menu > Save to Contacts**.
- You can search for the following information as long as that information is included in the Company Directory: First name, Last name, E-mail name, Display name, E-mail address, or Office location.



# Chapter 8

## Internet

---

### 8.1 Ways of Connecting to the Internet

Your device's networking capabilities allow you to access the Internet or your corporate network through Wi-Fi, GPRS/3G (or EDGE when available), or dial-up. You can also add and set up a VPN or proxy connection.

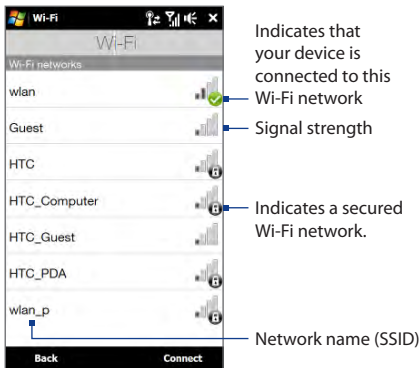
#### Wi-Fi

Wi-Fi provides wireless Internet access over distances of up to 100 meters (300 feet). To use Wi-Fi on your device, you need access to a wireless access point or "hotspot".

**Note** The availability and range of your device's Wi-Fi signal depends on the number, infrastructure, and other objects through which the signal passes.

#### To turn Wi-Fi on and connect to a Wi-Fi network

1. Tap **Start** > **Settings**, and then tap **Communications**.
2. Tap **Wi-Fi**. Detected wireless networks are displayed on the screen. Tap the desired Wi-Fi network, and then tap **Connect**.
  - If you selected an open (unsecured) network, you are automatically connected to the network.
  - If you selected a secured network, enter the security key and then tap **Done**. You are then connected to the network.



### 3. Tap **Back** to return to the Communications screen.

Next time you use your device to detect Wi-Fi networks, you will not be prompted to enter the network key of the previously accessed Wi-Fi network (unless you perform a hard reset which will erase custom settings on your device).

- Notes**
- Wi-Fi networks are self-discoverable, which means no additional steps are required for your device to connect to a Wi-Fi network. It may be necessary to provide a username and password for certain closed wireless networks.
  - To turn off Wi-Fi, on the Communications screen, tap the OFF/ON slider at the right side of the **Wi-Fi** item.

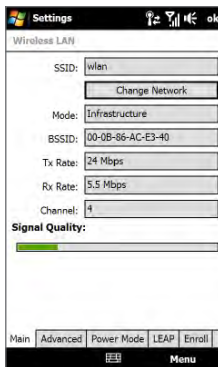
## To check Wi-Fi network status

Aside from the Wi-Fi status icon on the title bar, you can check the current Wi-Fi connection status from any of the following screens of your device:

- **Wireless LAN screen**

Tap **Start > Settings**, and then tap **Menu > Wireless Networks**.

On the **Main** tab, you will see the Wi-Fi network that your device is currently connected to. The configuration and signal quality of the Wi-Fi network are also shown.



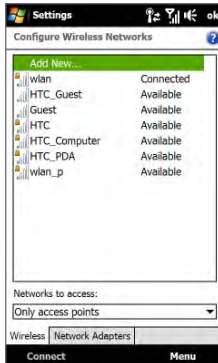
- **Configure Wireless Networks screen**

Tap **Start > Settings**, and then tap **All Settings**. On the **Connections** tab, tap **Wi-Fi**, then tap the **Wireless Networks** button. This screen displays all available Wi-Fi networks in range.

To connect to a Wi-Fi network in the list, tap and hold on the desired network, then tap **Connect**.

Tap a Wi-Fi network in the list to view or change its connection settings.

You can also add new Wi-Fi networks, if available, by tapping **Add New**.



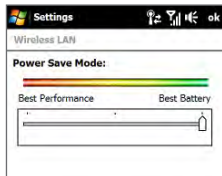
### To save battery power while connected to a Wi-Fi network

Using Wi-Fi quickly consumes battery power. Turn off Wi-Fi when not in use.

You can also enable power saving settings while using Wi-Fi.

1. Tap **Start > Settings**, and then tap **Menu > Wireless Networks > Power Mode** tab.
2. Move the **Power Save Mode** slider to a position that optimizes performance with the least power consumption.

For example, move the slider to the left (Best Performance) to have the optimal wireless network performance; move to the right (Best Battery) to obtain the maximum battery usage.



### GPRS/3G

Use **GPRS/3G** (or **EDGE**, if available) to connect to the Internet and to send and receive e-mail on your device. You will need a data plan to use your wireless service provider's GPRS/3G network. Check with your wireless service provider to find out about GPRS/3G rates.

GPRS/3G settings are already preconfigured on your device, and your device is ready to use your wireless service provider's GPRS/3G services. Do not change the settings as this may cause services to stop working. If you need to add another GPRS/3G connection on your device, contact your wireless service provider.

### Dial-up

To set up a dial-up connection to your Internet Service Provider (ISP) on your device, you need the same settings that you normally use when you dial up from your computer. This includes the ISP server phone number, your user name and password.

1. Tap **Start > Settings**, and then tap **All Settings**.
2. On the **Connections** tab, tap **Connections**.

3. In **My ISP**, tap **Add a new modem connection**.
4. In the **Select a modem** list, select **Cellular Line**, then tap **Next**.
5. Enter the ISP server phone number, then tap **Next**.
6. Enter your user name, password, and any other information required by your ISP, then tap **Finish**.

## Starting a data connection

After setting up a data connection such as GPRS/3G or ISP dial-up on your device, you can now connect your device to the Internet. The connection is automatically started when you begin using a program that accesses the Internet such as Opera Mobile.

### To manually start a data connection

If you have set up multiple types of data connections on your device, you can manually start a connection.

1. Tap **Start > Settings**, and then tap **All Settings**.
2. On the **Connections** tab, tap **Connections**.
3. Tap **Manage existing connections**.
4. Tap and hold the name of the desired connection, and then tap **Connect**.

### To disconnect active data connections

1. On the Home screen, slide to the **Settings** tab, and then tap **Communications**.
2. Tap the OFF/ON slider at the right side of the **Data Connection** item.


## 8.2 Using Opera Mobile™

**Opera Mobile™** is a full-featured Internet browser, optimized for use on your device.

### To open Opera Mobile and go to a website

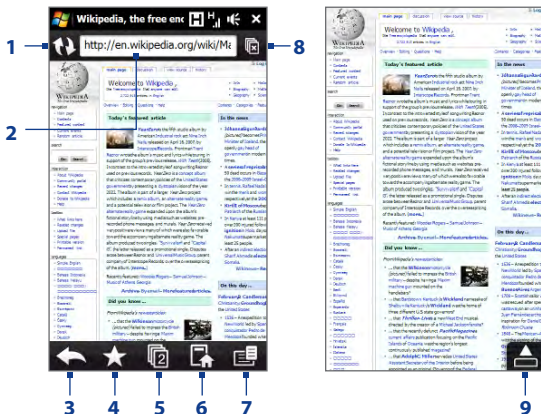
1. On the Home screen, slide to the **Internet** tab and then tap **Launch Browser**.
2. On the Opera Mobile screen, tap the address bar.

**Note** If the address bar is hidden, tap  at the bottom-right corner of the screen.

3. Enter the URL address and tap .

**Tip** When you tap the address bar, a search field also appears. Quickly search the web by entering the search item and tapping .

### The browser screen



- 1 Refresh the web page being viewed.
- 2 Enter the URL of the web site here.
- 3 Return to the previous web page viewed.
- 4 Go to the Bookmarks screen where you can add, edit, or send bookmarks.
- 5 Add a new browsing tab or switch to another browsing tab.
- 6 Go to the home page.
- 7 Open a list where you can change Opera Mobile settings. See "Opera Mobile menu" in this chapter for details.
- 8 Close the current tab. This is enabled only if you have more than one tab opened.
- 9 When browsing the web, Opera Mobile automatically switches to full screen mode. Tap to show the address and Menu bars again.

## Opera Mobile menu

On the menu bar, tap  to open the menu.



Open the Settings screen where you can set your home page, change display settings, set privacy settings, and more.

View items being downloaded, and resume or stop current downloads.

View information about the web page you are browsing.

See web pages that you have viewed.

Manage and view web pages that you have saved.

Open the Opera Mobile help file.

Close Opera Mobile completely. Opera Mobile will not run in the background.

- Notes**
- For more information about using Opera Mobile, go to: <http://www.opera.com/products/mobile/>.
  - You can also use Internet Explorer® Mobile to browse the web. To open Internet Explorer Mobile, tap **Start > All Programs > Internet Explorer**.

## Navigating web pages

### To pan on the web page

While browsing web pages, use finger gestures to pan on the web page.

- Tip** Touch and hold an empty area on a web page to open a shortcut menu that lets you go back to the previous page, reload the page, add the page as a Favorite, and more. You can also tap and hold a link or image on a web page to open a menu with different options.





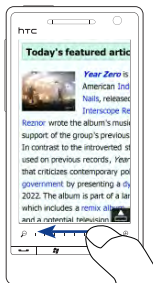
### To zoom in and out on web pages

While viewing a web page in full screen, slide to the right of the zoom bar to zoom in on the web page. To zoom out, slide your finger to the left on tap the screen twice again.

**Tip** You can also tap the screen twice to zoom in. To zoom out, tap the screen twice again.



Zooming in



Zooming out

### To change the screen orientation

Change the screen orientation by simply turning your device sideways.



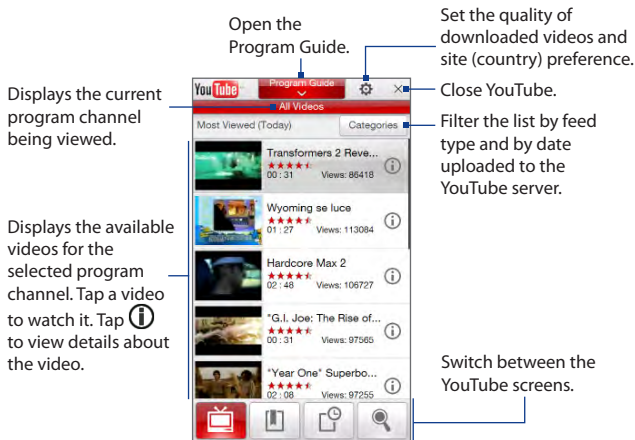
## 8.3 Using YouTube™

YouTube™ lets you browse, search, and watch Internet videos that are posted in YouTube.


**Note** You need an active data or Wi-Fi connection to use YouTube. If you are using a GPRS/3G connection, watching Internet videos may significantly increase your data connection costs.

### To open YouTube

On the Home screen, slide to the **Internet** tab, and then tap **YouTube**.





## Searching videos

1. On the YouTube screen, tap .
2. On the **Search** screen, enter the video information, and then tap **Search**.  
YouTube searches for the video, and then displays all related videos on the screen.
3. Tap on a video to watch it. See “Watching videos” for details.

## Using the Program Guide

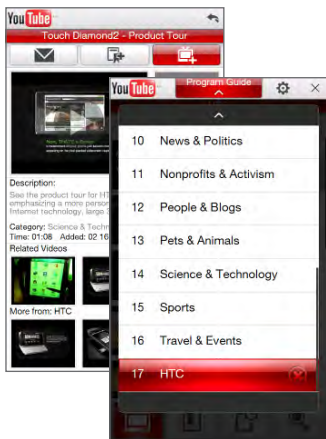
The Program Guide categorizes videos into channels so you can browse and watch related videos available on YouTube. You can also add your favorite video channel in the Program Guide.

### To add a new channel

1. Search the channel or video you want to add to the Program Guide. See “Searching videos” for details.
2. In the search results list, tap  at the right side of the video or channel to open the details screen.
3. Tap , and then tap OK on the confirmation screen.

The channel you just subscribed to is shown when you tap **Program Guide**.

**Tip** You can also add a YouTube user or search information as a program channel.



### To change the program channel


1. On the **Videos** screen, tap **Program Guide** at the top of the screen.
2. On the Program Guide, select a channel.

**Tip** You can scroll down to view more channels.

The video list refreshes to display the available videos for the selected channel.

### To delete a program channel

You can only delete channels that you have added to the Program Guide.


1. Tap **Program Guide**.
2. Scroll down to the channel that you want to delete, and then tap .
3. On the confirmation screen, tap **Yes**.

### Watching videos

Tap a video on any YouTube screen, program guide channel, or search results list to launch the YouTube Video Player.

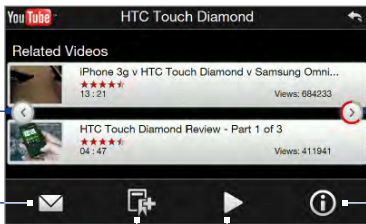


**Tip** To adjust the volume, press the VOLUME UP and VOLUME DOWN buttons on the left panel of the device.

When you tap Stop (  ) or finish watching the entire video, you can select from the following options.

Go back to the previous page of related videos.

Send the link of the previously watched video via e-mail, or to send the video thumbnail via MMS.



Add the video to your Bookmarks.

Replay the video.




Go to the next page of related videos. If no action is taken, the next page is automatically displayed after 10 seconds.

View information about the video you just watched.


## Bookmarks

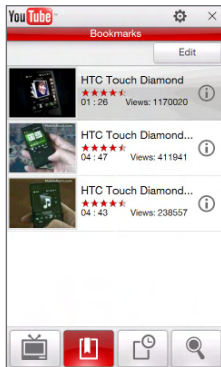
You can save your favorite videos in Bookmarks for quick access.

### To save a video in Bookmarks


After watching a video, tap . You can also tap  on any video that you want to add to Bookmarks and then tap  on the video details screen.

### To watch videos in Bookmarks

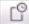
On the YouTube screen, tap . Tap a video to watch it.



**To delete a video from Bookmarks**

1. On the **Bookmarks** screen, tap **Edit**.
2. Tap  on the video you want to remove.
3. On the confirmation screen, tap **Yes**.
4. Tap **Done**.

**History**

View recently watched videos on the History screen. On the YouTube screen, tap  and then tap a video to watch it.

**Note** To clear the History list, tap **Clear**.

## 8.4 Using Streaming Media

**Streaming Media** lets you stream live broadcasts or on-demand media content from the web. The media is sent in a continuous stream to your device and is played as it arrives, along with the audio.

The Streaming Media program allows you to play **3GP** and **MPEG-4** files. It also supports playback of **SDP** (Session Description Protocol) files.

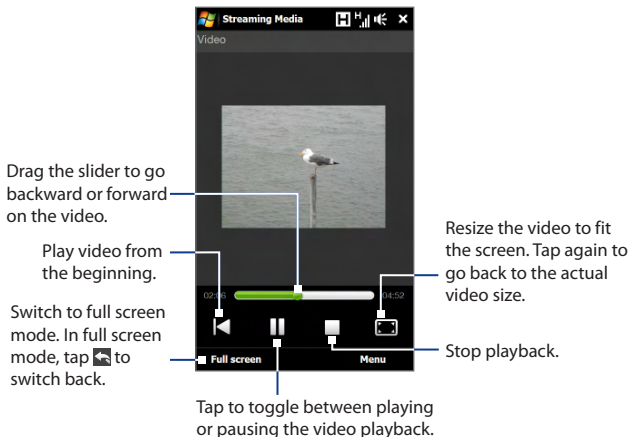
**Note** Before you launch the Streaming Media program, make sure that you are connected to the Internet.

**To access streaming content via Opera Mobile**

In Opera Mobile, you can open a web page containing RTSP (Real Time Streaming Protocol) links to streaming media content then play the content in the Streaming Media program.

1. On the Home screen, slide to the **Internet** tab and tap **Launch Browser**.
2. In the address bar, enter the URL address of the web page that contains the RTSP link to the desired \*.3gp, \*.mp4, or \*.sdp file.
3. On the web page, tap the RTSP link.

- Streaming Media then automatically opens and starts playing the file. During playback, use the slider and button controls to play/pause, switch to full screen, replay, and fast forward.



### To stream media files directly on the Streaming Media Player

Streaming Media only supports RTSP links when you stream \*.3gp and \*.mp4 files directly on the program.

- Tap **Start > All Programs > Streaming Media**.
- Tap **Menu > Connect**.
- Enter the complete RTSP link, and then tap **Connect**. Streaming Media starts playing the file.
- During playback, use the slider and playback control buttons to play/pause, switch to full screen, replay, and fast forward.

**To view streaming video information**

While streaming a video clip, tap **Menu > Properties** to view the video properties such as the video link or location, duration, and bit rate.

**To configure streaming video connection settings**

Tap **Menu > Options** to configure the Streaming Media settings. From this screen, you can set the media buffer, select the connection to use, and set all streaming videos to play in full screen.

## 8.5 Using Windows Live™

**Windows Live™** helps you quickly find information using Windows Live™ Search, access and synchronize your Windows Live™ Mail e-mails and contacts, and send instant messages using Windows Live™ Messenger.

**Note** Before you can use Windows Live™, your device must be connected to the Internet. For information about setting up an Internet connection, see “Ways of Connecting to the Internet” in this chapter.

**To set up Windows Live™ for the first time**

1. Tap **Start > All Programs > Windows Live**, and then tap **Sign in to Windows Live**.
2. Tap the links to read the Windows Live™ Terms of Use and the Microsoft Online Privacy Statement. After reviewing them, tap **Accept**.
3. Enter your Windows Live™ Mail or Hotmail address and password, select the **Save password** checkbox, and then tap **Next**.
4. Tap **Next**.

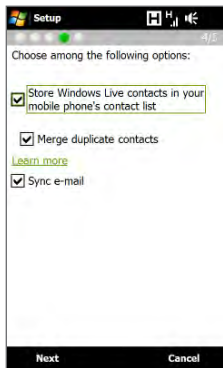


- Choose what information you want to sync online with your device.


If you select **Store Windows Live contacts in your mobile phone's contact list**, your Windows Live™ contacts will be added to the contact list and to Windows Live™ Messenger on your device.

If you select **Sync e-mail**, your Windows Live™ Mail or Hotmail inbox messages will be downloaded to your device.

- Tap **Next**.
- After synchronization is complete, tap **Done**.

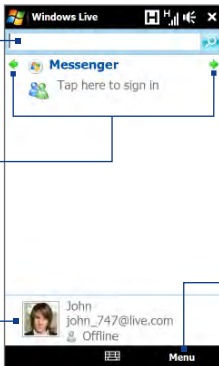


## The Windows Live™ screen

Search bar. Enter the information you want to search, then tap .

Switch between the Windows Live™ Messenger, Windows Live™ Mail, and Sync status screens.

Change your display name, picture, and personal message.



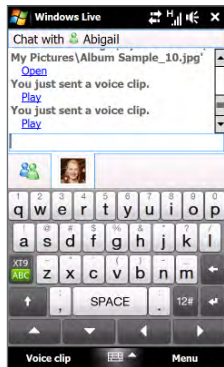
Adjust Windows Live™ settings.

## Using Windows Live™ Messenger

With this mobile version of **Windows Live™ Messenger**, you can send and receive instant messages.

### To sign in to Windows Live™ Messenger and start a conversation

1. Tap **Messenger** on the Windows Live™ screen.
2. Tap **Sign in** on the Messenger screen. Signing in may take several minutes, depending on your connection speed.
3. In the contact list, select an online contact, and then tap **Send IM** to open the message screen.
4. On the message screen, enter your message in the text field, then tap the Enter key on the on-screen keyboard to send the message. You can also do any of the following on the message screen:
  - To add an emoticon, tap **Menu > Add emoticon**, then tap an emoticon on the screen. The emoticon is attached to your message.
  - To send a file, tap **Menu > Send**, select the type of file (picture, voice clip, or any file), and then locate the file you want to send.
  - To invite one or more contacts to the conversation, tap **Menu > Options > Add participant**.
  - To send a voice message, tap **Voice clip** on the message screen, then start talking. When you have finished recording, tap **Send**.
5. To end the conversation with the current contact, tap **Menu > End conversation**.
6. To sign out, tap **Menu > Sign Out**.



### To add a Windows Live™ contact

You can add new Windows Live™ contacts in Windows Live™ Messenger.

1. Tap **Menu > Add new contact**.
2. Enter the e-mail address of the contact, and then tap **OK**.

## 8.6 Using RSS Hub

**RSS Hub** is an RSS reader that keeps you up-to-date with the latest news from the Internet. It monitors RSS feeds from your favorite news sites, blogs and more, and downloads the most current updates and podcasts.

**Note** Make sure you have an active Internet connection (such as GPRS/3G or Wi-Fi) before using RSS Hub.

For more information about RSS Hub, tap **Start > All Programs > Help**, and then tap **Help for Added Programs > RSS Hub**.

### Subscribing to and organizing news channels

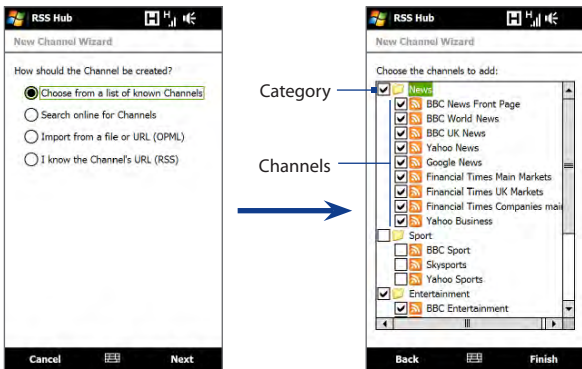
You must subscribe to news channels before you can receive RSS feeds.

#### To subscribe to news channels

1. Tap **Start > All Programs > RSS Hub**, and then tap **Continue**.
3. In the New Channel Wizard screen, select the **Choose from a list of known Channels** option, and then tap **Next**. A list of RSS channels is displayed.

**Note** If the RSS channel you want to subscribe to is not in the list of known channels, tap **Back**, then select another option on the New Channel Wizard screen. For more information on these other options, see the Help on your device.

4. Select the checkboxes of the RSS channels you want to subscribe to, then tap **Finish**.



Tap to load pre-selected RSS channels.

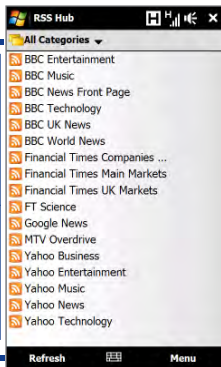
- Tip** Channels are grouped by categories. If you want to select all channels in a category, select the category check box.

5. The channel list appears. Tap **Refresh** to update the channels.

Select the channel category to display

Channel list

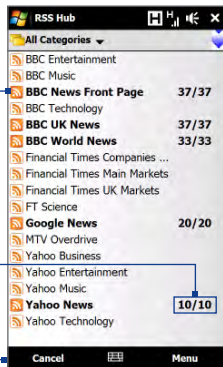
Update the channels



Channel is updated. Tap to view the headlines.

Headline count

Cancel channel updating



### To add new channels

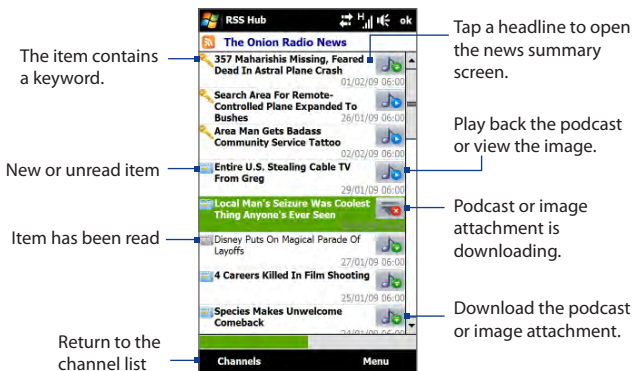
1. In the channel list, tap **Menu > Channel > New** to open the New Channel Wizard screen.
2. Select an option, and then follow screen instructions to add new channels. For more information on New Channel Wizard options, see the Help on your device.

### To filter the channels to display

In the channel list, tap **Menu > View**, and then select **Updated** to display only those channels with unread items, or **All** to display all subscribed channels.

## Using the headline list

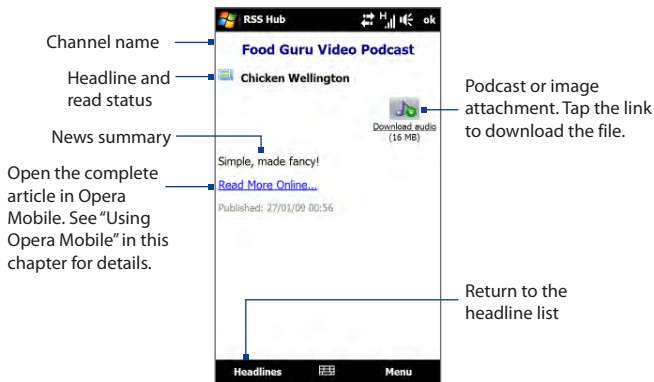
Tap a channel in the channel list to display the headline list.



New or unread items display in bold and are marked with a blue newspaper icon. Items that have been read are marked with a gray newspaper icon.

## Viewing the news summary

Tap a headline in the headline list to display the news summary.



Tap **Menu** to change the way that text is displayed, save a podcast, send a link to the article via e-mail, and more.

### To download, play, or save podcasts

1. On the news summary screen tap the **Download audio/Download video** link or the audio/video podcast icon.

**Tip** To cancel the file download, tap **Cancel download** below the audio/video file icon.

2. After downloading the file, do one of the following:

- Tap **Play audio/Play video** or the audio/video file icon to play back the file.
- Tap **Menu > Podcast > Save** to save a copy of the file to the device's main memory or storage card.

**To send the a link to the article via e-mail**

1. In the news summary screen, tap **Menu > Send Link via Email**.
2. Messaging opens and displays the Account Picker screen. Tap the e-mail account that you want to use.  
A new e-mail message is then created with the link.
3. Specify the e-mail recipients, and then tap **Send**.

**Note** For more information on how to compose e-mails, see “Creating and sending an e-mail message” in Chapter 6.

**To view the next or previous news summary**

In the news summary screen, tap **Menu > Next** or **Menu > Previous**.

## 8.7 Using Your Device as a Modem (Internet Sharing)

**Internet Sharing** connects your desktop or notebook computer to the Internet by using your device’s data connection such as GPRS/3G. You can connect via USB or Bluetooth.

**Before you proceed**

- Make sure your device has a SIM card installed, and your device has a GPRS/3G or dial-up modem connection. If your device has not been set up with a data connection yet, tap **Menu > Connection Settings** on the Internet Sharing screen. For more information about setting up these connections, see “GPRS/3G” and “Dial-up” in this chapter.
- To set up your device as a USB modem, you must first install Windows Mobile Device Center or Microsoft ActiveSync version 4.5 or later on the computer.
- To use a Bluetooth connection, make sure your computer has built-in Bluetooth capability. If your computer does not have Bluetooth, you can connect and use a Bluetooth adapter or dongle.
- Before using Internet Sharing, disconnect from Windows Mobile Device Center or ActiveSync on your computer.



### To set up your device as a USB modem

1. Connect the device to your desktop or notebook computer using the USB sync cable.
2. When the Connect to PC screen appears, select **Internet Sharing**, then tap **Done**.
3. In the PC Connection list, select USB.
4. In the **Network Connection** list, select the name of the connection that your device uses to connect to the Internet.
5. Tap **Connect**.



### To use your device as a Bluetooth modem

1. On your device, turn on Bluetooth and set it to visible mode by following the steps in the "To turn Bluetooth on and make your device visible" section in Chapter 9.
2. Initiate a Bluetooth partnership from your device by following the steps in the "To create a Bluetooth partnership" section in Chapter 9.
3. Connect the device to your desktop or notebook computer using the USB sync cable.
4. When the Connect to PC screen appears, select **Internet Sharing**, then tap **Done**.
5. Select **Bluetooth PAN** as the **PC Connection**.
6. From the **Network Connection** list, select the name of the connection that your device uses to connect to the Internet, and then tap **Connect**.

7. On your computer, set up a Bluetooth Personal Area Network (PAN) with your device:

**For Windows Vista:**

- a. Click **Start > Control Panel > Network and Internet > Network and Sharing Center**.
- b. Click **Manage network connections** and then under **Personal Area Network**, double-click **Bluetooth Network Connection**.
- c. In the Bluetooth Personal Area Network Devices dialog box, select your device, and click **Connect**.

**For Windows XP:**

- a. Tap **Start > Control Panel > Network Connections**.
- b. Under **Personal Area Network**, click the **Bluetooth Network Connection** icon.
- c. Under **Network Tasks**, click **View Bluetooth network devices**.
- d. In the Bluetooth Personal Area Network Devices dialog box, select your device, and click **Connect**.

**Note** If the Bluetooth adapter or dongle on your computer was installed using a third-party driver, open the Bluetooth software that came with the Bluetooth adapter/dongle to connect your computer and device via Bluetooth. Refer to the Bluetooth adapter/dongle documentation for more information.

8. On the Internet Sharing screen on your device, check whether a connected status message is displayed, which indicates that your computer has been successfully connected to the Internet using your device as a Bluetooth modem.

**To end the Internet connection**

On the Internet Sharing screen, tap **Disconnect**.

# Chapter 9

## Bluetooth

---

### 9.1 Bluetooth Modes


Bluetooth is a short-range wireless communications technology. Devices with Bluetooth capabilities can exchange information over a distance of about eight meters without requiring a physical connection.

Bluetooth on your device operates in three different modes:

- **On.** Bluetooth is turned on. Your device can detect other Bluetooth-enabled devices, but not vice versa.
- **Visible.** Bluetooth is turned on, and all other Bluetooth-enabled devices can detect your device.
- **Off.** Bluetooth is turned off. In this mode, you can neither send nor receive information using Bluetooth.

- Notes**
- By default, Bluetooth is turned off. If you turn it on, and then turn off your device, Bluetooth also turns off. When you turn on your device again, Bluetooth automatically turns on.
  - Turn off Bluetooth when not in use to conserve battery power, or in places where using a wireless device is prohibited, such as on board an aircraft and in hospitals.

#### To turn Bluetooth on and make your device visible

1. Tap **Start** > **Settings**, and then tap **Menu** > **Bluetooth Devices** > **Mode** tab.
2. Select the **Turn on Bluetooth** and **Make this device visible to other devices** check boxes.
3. Tap **OK**. The Title bar shows  to indicate that the device is in visible mode.

**To turn off Bluetooth visibility after a certain period of time**

You can automatically turn off Bluetooth visibility after a specified period of time.

1. Tap **Start > Settings**, and then tap **Menu > Bluetooth Devices > Timeout** tab.
2. In **Turn off Visible mode**, select the time before your device's Bluetooth visibility turns off, and then tap **OK**.

## 9.2 Bluetooth Partnerships

Create a Bluetooth partnership between your device and another Bluetooth-enabled device in order to exchange information in a secured manner. Creating a Bluetooth partnership between two devices is a one-time process. Once a partnership is created, the devices can recognize the partnership and exchange information without entering a passcode again.

**To create a Bluetooth partnership**

1. Tap **Start > Settings**, and then tap **Menu > Bluetooth Devices > Devices** tab.
2. Tap **Add new device**. Your device displays the names of other Bluetooth devices within range.
3. Tap the device name in the box, and then tap **Next**.
4. Specify a passcode to establish a secure connection. The passcode can be 1 up to 16 characters.
5. Tap **Next**.
6. Wait for the paired device to accept the partnership. The receiving party needs to enter the same passcode that you specified.
7. After the receiving party enters the passcode, a message box appears on your device confirming the partnership.
8. Tap **Done**.

### To accept a Bluetooth partnership

1. Ensure that Bluetooth is turned on and in visible mode.
2. Tap **Yes** when prompted to establish a partnership with the other device.
3. Enter the passcode (the same passcode that is entered on the device requesting the partnership) to establish a secure connection.
4. Tap **Next**.
5. Tap **Done**. You can now exchange information with the paired device.

- Tips**
- Tap the device's name in the **Devices** tab to change the paired device name and to set the services you want to use for the paired device. After setting the name and options, tap **Save**.
  - To delete a Bluetooth partnership, tap and hold the partnership's name on the **Devices** tab, then tap **Delete**.

## 9.3 Connecting a Bluetooth Hands-free or Stereo Headset

For hands-free phone conversations, you can use a Bluetooth headset with your device. Your device also supports A2DP (Advanced Audio Distribution Profile) which allows you to use a Bluetooth stereo headset for listening to stereo music.

### To connect a Bluetooth hands-free or stereo headset

1. Make sure that both your device and the Bluetooth headset are turned on and within close range, and that the headset is visible. Refer to the Bluetooth headset documentation on how to set the headset in visible mode.
2. Tap **Start** > **Settings**, tap **Communications**, and then tap **Bluetooth**.
3. Tap **Add new Bluetooth headset**. The device scans for Bluetooth headsets within range.
4. Tap the name of the Bluetooth headset in the list to automatically pair it with your device.

5. When pairing is successful, tap **OK**.

**Note** If automatic pairing fails, tap **Retry**, or enter the headset passcode manually when prompted.

If the Bluetooth stereo headset is disconnected, turn the stereo headset on, repeat steps 1 and 2, and then tap the stereo headset name under the Previously Paired Headset section to connect.

## 9.4 Beaming Information Using Bluetooth

You can beam information such as contacts, calendar items, tasks, and files from your device to a Bluetooth-enabled computer or device.


### To beam information from your device to a computer

1. Turn on Bluetooth on your device, and make your device visible. For information about this, see “To turn Bluetooth on and make your device visible.”
2. Set Bluetooth on your computer to visible mode, create a Bluetooth partnership, then enable your computer to receive Bluetooth beams.

**Note** If the Bluetooth adapter or dongle on your computer was installed using a third-party driver, open the Bluetooth software that came with the Bluetooth adapter/dongle and enable the adapter/dongle to be discovered by other devices. Refer to the Bluetooth adapter’s documentation for more information.

If your computer has **Windows Vista** or **Windows XP SP2** and your computer’s Bluetooth adapter is supported by your Windows version, do the following:

- a. On your computer, open **Bluetooth Devices** from the Control Panel, and then click the **Options** tab on the **Bluetooth Devices** window.
- b. For **Windows Vista**, select **All Bluetooth devices to find this computer**.  
For **Windows XP**, select **Turn discovery on** and **Allow Bluetooth devices to connect to this computer**.

- c. Create a Bluetooth partnership between your device and computer. For information about creating a partnership, see “Bluetooth partnerships”.
  - d. In the **Options** tab of **Bluetooth Devices**, select **Show the Bluetooth icon in the notification area**.
  - e. To enable your computer to receive Bluetooth beams, right-click the Bluetooth icon  in the notification area at the bottom-right corner of your computer screen and select **Receive a File**. You are now ready to beam.
3. On your device, select an item to beam. The item can be an appointment in your calendar, a task, a contact card, or a file.
  4. To beam a contact, tap **Menu > Send Contact > Beam**. To beam other types of information, tap **Menu > Beam [type of item]**.
  5. Tap the device name to which you want to send the item.
  6. If you beamed a calendar, task, or contact item to your computer and it is not automatically added to Outlook, select **File > Import and Export** in Outlook to import it.

- Tips**
- The default folder on your computer where beamed items are stored may be C:\Documents and Settings\your\_username\My Documents in Windows XP or C:\Users\your\_username\My Documents in Windows Vista.
  - For your device to receive Bluetooth beams, tap **Start > Settings > Connections** tab > **Beam** and make sure the **Receive all incoming beams** check box is selected.

To beam information to a Bluetooth-enabled device such as another Windows Mobile-powered device, create first a Bluetooth partnership with the other device, then follow steps 3 to 5.

## 9.5 Bluetooth Explorer and Bluetooth File Sharing

**Bluetooth Explorer** lets you search Bluetooth devices that have file sharing capability, and allows you to access their Bluetooth shared folder and exchange files.

### To enable Bluetooth Explorer and Bluetooth file sharing on your device

1. Tap **Start > Settings**, and then tap **Menu > Bluetooth Devices > FTP** tab.
2. Select the **Enable Bluetooth Explorer** check box. This makes the **Bluetooth** device folder visible in File Explorer and gives other Bluetooth devices access to your Bluetooth shared folder.
3. Select the **Enable File Sharing** check box.  
**Tip** Tap **Browse** to use another folder as your Bluetooth shared folder.
4. Tap **OK**.

### To use Bluetooth Explorer and copy a file

1. Tap **Start > All Programs > Bluetooth Explorer**.  
**Tip** You can also open Bluetooth Explorer from the File Explorer program. Tap **Start > All Programs > File Explorer**, tap the down arrow (▼) on the upper-left of the screen, and then tap **Bluetooth**.

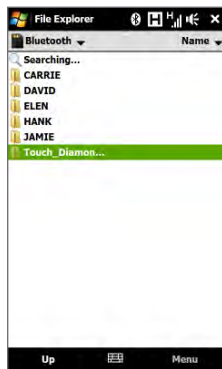
Bluetooth Explorer then scans for other Bluetooth devices that have file sharing capability.



2. Tap a Bluetooth device that you want to connect to.
3. When prompted, enter a passcode to connect to the other Bluetooth device.

When connected, files in the Bluetooth shared folder on the other Bluetooth device also appear on the Bluetooth Explorer screen.

3. Tap and hold a file, and then tap **Cut** or **Copy** depending on your preference.
4. Tap **Up** twice, and then navigate to the folder where you want to paste or copy the file.
5. Tap **Menu** > **Edit** > **Paste**.



## 9.6 Printing via Bluetooth

Connect your device to a Bluetooth printer to print contact information, appointment details, images, and other file types.

**Note** You can print files in the **.txt**, **.jpg**, **.xhtml**, **.vcf**, **.vcs** file formats.

Before you start printing, make sure to turn on the Bluetooth printer and to turn on Bluetooth on your device.

### To print contact information

1. Tap **Start** > **All Programs** > **Contacts**.
2. Tap and hold the contact whose information you want to print, and then tap **Print via Bluetooth**.
3. Tap **Menu** > **Search Devices**. Your device starts to search for Bluetooth devices.

4. Select the Bluetooth printer and tap **Menu > Send File**.
5. Set the printing options, and then tap **Print**.

#### **To print a calendar appointment**

1. Tap **Start > Calendar** to open the Calendar tab.
2. Select the date with the appointment to open it in Day view.
3. Tap the appointment to open the appointment details screen, and then tap **Menu > Print via Bluetooth**.
4. Follow steps 3 to 5 in "To print contact information".

#### **To print an image or text file**

1. Tap **Start > All Programs**, and then tap **Pictures & Videos** or **File Explorer**.
2. Locate the image or text file you want to print.
3. Tap and hold the image or text file, and then tap **Print via Bluetooth**.
4. Follow steps 3 to 5 in "To print contact information".

# Chapter 10

## Navigating on the Road

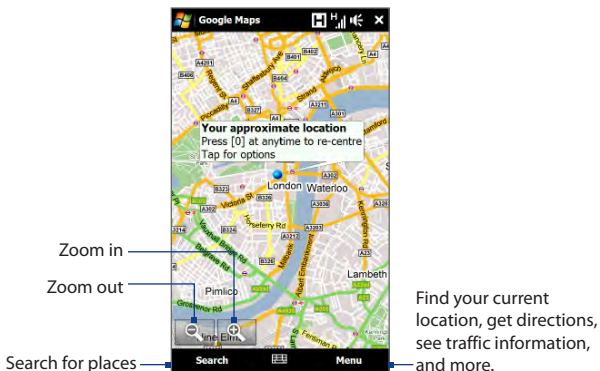
---

### 10.1 Google™ Maps (Available by Country)

**Google™ Maps** lets you track your current location, view real-time traffic situations, and receive detailed directions to your destination. It also allows you to search and locate places of interest or even a contact address.

**Note** You need an active data or Wi-Fi connection to use Google Maps.

To open Google Maps, tap **Start > All Programs > Google Maps**.

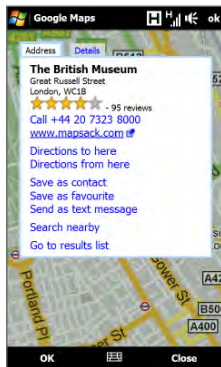
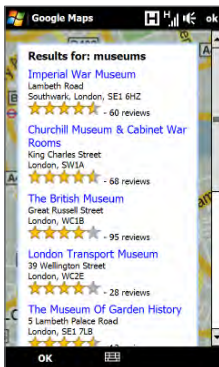
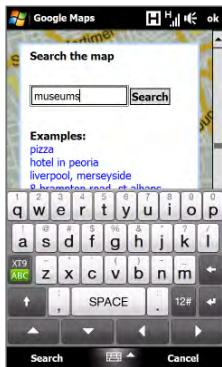


- Notes**
- Traffic information is available only in some selected cities.
  - Tap **Menu > Help > Tips** to learn more about the program and its many features.

## Searching a place of interest

Google Maps lets you search and locate a place of interest, shows the contact information for that place, and gives directions on how to get there from your current location.

1. On the Google Maps screen, tap **Search**.
2. Enter the name, address, or postal code of the place on the search field and then tap **Search**.
3. In the search results list, tap the place to view its address, phone number, and other details.



4. On the **Address** tab, tap:
- The **[phone number]** to call the place of interest.
  - The web address (if available) to go to the web site of the place of interest.
  - **Directions to here** to get directions going to the place of interest from your current location, or tap **Directions from here** to get directions going to another location from the place of interest.
  - **Save as contact** to save the contact information of the place of interest to your contacts list.
  - **Save as favourite** to add the place of interest to your list of favorite places. To access your favorite places, on the Google Maps screen, tap **Menu > Favourites**.
  - **Send as text message** to send the place's contact information to your contact via SMS.
  - **Search nearby** to search for other places of interest near the place you are currently viewing.

For more information about Google Maps, go to  
<http://www.google.com/gmm/index.html>.

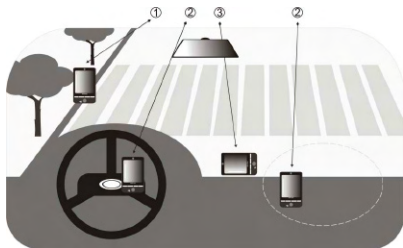
## 10.2 Guidelines and Preparation for Using GPS

If you installed a GPS navigation software on your device, follow these guidelines before and when using your device for GPS navigation.

- When using GPS navigation software in the car, always plot your GPS route before starting to drive. Do not try to configure the GPS navigation software while driving.
- The plotted GPS route is only for driving reference. It should not interfere with actual driving behavior.

## 170 Navigating on the Road

- Do not leave your device in a vehicle or expose the device to direct sunlight to avoid overheating the battery, which could pose damage to the device or risk to the vehicle.
- When using the device inside a vehicle, use the car holder to mount the device securely in place. Avoid placing the device in the areas shown in the following diagram:



- 1 Do not place where it will block the driver's vision.
  - 2 Do not place where air bags could deploy.
  - 3 Do not place anywhere in the vehicle without securing the device in the holder.
- Use the GPS system cautiously. Users shall be liable for any damages resulting from negligent operation of the system.
  - The GPS signal cannot pass through solid non-transparent objects. Signal reception may be affected by obstructions such as high-rise buildings, tunnels, bridges, forests, weather (rainy or cloudy days), etc. If the vehicle's visor contains metal, it will be difficult for the GPS signal to pass through.
  - Other nearby wireless communication products (such as mobile phones or radar-detecting devices) may interfere with the satellite signal, resulting in unstable signal reception.

- The Global Positioning System (GPS) is built and operated by the US Defense Department. The Department is responsible for the accuracy and maintenance of the system. Any changes that the Department makes may affect the accuracy and function of the GPS system.

## 10.3 Downloading Location Data via QuickGPS

Before using the device for GPS navigation, open **QuickGPS** to download ephemeris data (current satellite position and timing information). QuickGPS significantly speeds up the time for determining your GPS position. QuickGPS downloads ephemeris data from web servers, instead of from satellites, using your device's Internet connection via Wi-Fi, ActiveSync or GPRS/3G.

### To open QuickGPS

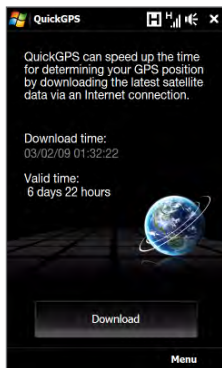
Tap **Start > All Programs > QuickGPS**.

### To download GPS data

Tap **Download** on the QuickGPS screen.

On the screen, initially, you will see the **Valid time** of the downloaded data. As time passes, the remaining days and hours of validity will be shown.

To speed up GPS positioning, download the latest ephemeris data when the validity of the data expires.



## Changing the download options

To configure download times, tap **Menu > Options** and choose from available options:

- **Remind me when data expires.**  
Display a message when ephemeris data expires.
- **Auto download when data expires.**  
Automatically download ephemeris data when it expires.
- **Auto download when connected to PC via ActiveSync.**  
Automatically download ephemeris data when it is connected to your computer via ActiveSync. Your computer must be connected to the Internet to download ephemeris data.



# Chapter 11


## Experiencing Multimedia

---

### 11.1 Taking Photos and Videos

Use **Camera** to take photos and record video clips.



#### To open the Camera screen

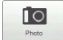

On the Home screen, slide to the **Photos and Videos** tab and then tap the camera icon (). The screen orientation automatically switches to landscape mode when you open Camera.

#### To close the Camera




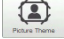
Tap the On-screen control button () , and then tap .

#### Changing the capture mode

Tap  , then tap the capture mode icon ( — the icon displayed is based on the current capture mode). On the menu, tap the capture mode you want to use.

Icon	Capture Mode
	Captures standard still images.
	Records video clips, with or without audio.

---

Icon	Capture Mode
	Captures still images continuously in one direction, and then stitches them to create a panoramic view of a scenery.
	Records video clips suitable for sending via MMS.
	Captures a still image that you can assign as a contact picture.
	Captures still images and places them within frames.




**Note** When using the second camera to capture, you can use all modes, except for Panorama.

## Using the Focus

Use the automatic focus or Touch Focus function to capture sharp and crisp photos and videos.

**Note** The second (front) camera has no auto-focus function.

### Auto-focus


Auto-focus sets the focus on the object at the center of the screen and is available for all capture modes. By default, touching the **Virtual Camera button** () activates auto-focus and a flashing white bracket () appears in the center of the screen. When focus is set, the bracket changes to a steady green bracket () , and then the Camera takes the photo or starts to record the video.

### Touch Focus

Touch Focus allows you to focus on a particular area of the screen. Touch Focus is enabled by default and is only available for Photo or Contacts Picture mode.

**Note** To disable Touch Focus, see “Setting advanced options” in this chapter.

To use Touch Focus:

1. Set the Camera to Photo or Contacts Picture mode.
2. Touch the area on the screen that you want to focus. The Touch Focus indicator (—<sup>1</sup>—) positions itself on the selected area.  
**Note** If you tap outside the effective focus area, a white box appears to indicate the area where you can use Touch Focus.
3. Touch  to activate auto-focus on the selected area and take the photo. See “Auto-focus” in this chapter for more information.

**Tip** To move the Touch Focus indicator back to the center of the screen, tap .






## Capturing photo or recording video

By default, the Camera automatically takes the shot or starts capturing video after you have set the focus.


- In **Photo** or **Contacts Picture** mode, touch the Virtual Camera button to activate auto-focus; when focus is set, the Camera automatically takes the shot.
- In **Video** or **MMS Video** mode, touch the Virtual Camera button to activate auto-focus; when focus is set, the Camera automatically starts recording. Touch the Virtual camera button again to stop recording.
- In **Picture Theme** or **Panorama** mode, touch the Virtual Camera button to activate auto-focus; when focus is set, the Camera automatically takes the first shot. Do the same for each shot you need to take.

## The Review screen

After capturing a photo or recording video, the Review screen gives you the option to view/play, send, or delete the photo or video clip.

Icon	Function
	Return to the live Camera screen.
	View the captured image or play the captured video in Album. See "Viewing Photos and Videos Using Album" in this chapter.
	Delete the captured image or video.
	Send the captured image or video via MMS or e-mail.
	After capturing in Contacts Picture mode, tap to assign the photo to a contact.

## On-screen controls



Tap  to display the on-screen controls.




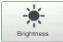
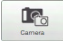



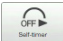

- 1 Album.** Open the Album program. See "Viewing Photos and Videos Using Album" for details.
- 2 Capture mode.** See "Changing the capture mode" for details.

- 3 **Touch Focus / Auto-focus indicator.** See “Using the focus” for details.
- 4 **Menu.** Open the Menu Panel. See “Menu Panel” for details.
- 5 **Virtual Camera button.** Activates the auto-focus and functions as the shutter release button.
- 6 **Template Selector icon.** In Picture Theme mode, tap to select another frame.
- 7 **Progress indicator.** In Picture Theme and Panorama modes, this shows the number of consecutive shots.

## Menu Panel

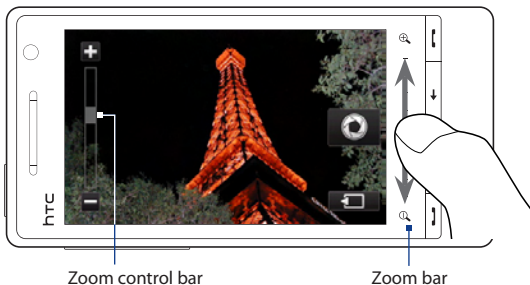
The Menu panel lets you quickly adjust common camera settings and provides access to more advanced camera settings. To open the Menu panel, tap  on the Camera screen, and then tap . To adjust a setting, keep tapping a button, for instance, **White Balance**, to cycle through the available settings.

**Note** The available menu panel buttons depend on the selected capture mode.

Icon	Function
	Select the white balance setting according to the current lighting condition to capture colors more accurately.
	Open the Brightness bar and adjust the brightness level. Tap outside the Brightness bar to apply the change.
	Select the camera to use. You can choose from main camera (  ) or second camera (  ) .
	Set the ISO level manually to <b>100</b> , <b>200</b> , <b>400</b> , or <b>800</b> , or set it back to <b>AUTO</b> . Higher ISO numbers are better for taking pictures in low light conditions.
	Set the self-timer to <b>2 seconds</b> , <b>10 seconds</b> , or <b>Off</b> when in Photo or Contacts Picture mode.
	Open the advanced camera settings. See “Setting advanced options” for details.

## Zooming

Before capturing a photo or a video clip, you can zoom in or out on your subject. To zoom in or out, slide your finger up or down on the Zoom bar while holding the device sideways. While you are sliding your finger on the Zoom bar, the level of zoom is shown on the zoom control bar on the screen.



The camera zoom range for a photo or a video clip depends on the capture mode and resolution. Refer to the table for more information.

Capture mode	Resolution	Zoom range	
<b>Photo</b>	Normal: 2592 x 1944 Widescreen: 2592 x 1552	1.0x to 1.6x	
	3M	Normal: 2048 x 1536 Widescreen: 2048 x 1216	1.0x to 1.6x
	2M	Normal: 1600 x 1200 Widescreen: 1600 x 960	1.0x to 1.6x
	1M	Normal: 1280 x 960 Widescreen: 1280 x 768	1.0x to 1.6x
	L	Normal: 640 x 480 Widescreen: 640 x 384	1.0x to 1.6x
	M	Normal: 320 x 240 Widescreen: 320 x 192	1.0x to 3.2x

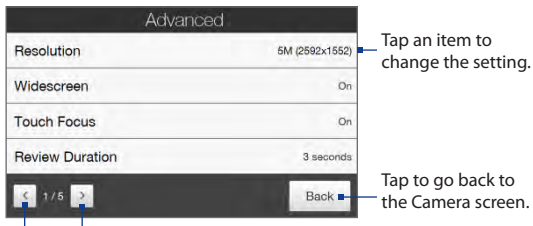
Capture mode	Resolution	Zoom range
<b>Video</b>	VGA 640 x 480*	1.0x to 1.6x
	CIF 352 x 288	1.0x to 1.6x
	L 320 x 240	1.0x to 1.6x
	M 176 x 144	1.0x to 1.6x
	S 128 x 96	1.0x to 1.6x
<b>MMS Video</b>	M 176 x 144	1.0x to 1.6x
	S 128 x 96	1.0x to 1.6x
<b>Panorama</b>	L 640 x 480	1.0x to 1.6x
	M 320 x 240	1.0x to 3.2x
<b>Contacts Picture</b>	M 272 x 272	1.0x to 3.2x
<b>Picture Theme</b>	Determined by the current template	Depends on the size of the selected template

\* Available only in some models.

**Note** The capture resolutions and zoom ranges are only for the main camera.

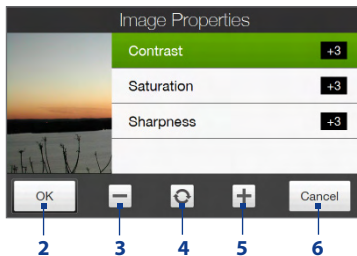
## Setting advanced options

The Advanced options let you adjust options for your selected capture mode and set Camera program preferences. Tap **Advanced** on the Menu panel to open the Advanced screen.



Tap to navigate through the Advanced option screens.

- **Resolution.** Select the resolution to use.
- **Widescreen** (Photo mode). When **On** (default) you can use the entire screen as viewfinder. Refer to the zoom table for the resolution when Widescreen is **On**.
- **Touch Focus** (Photo and Contacts Picture modes). Enables or disables the Touch Focus function. Touch Focus is **On** by default.
- **Review Duration.** Set the time for a captured photo/video to remain on the Review screen.
- **Quality.** Select the image quality level for captured photos.
- **Capture Format** (Video and MMS Video modes). Select the file format for recorded videos.
- **Time Stamp** (Photo mode). Include the date and time on captured photos.
- **Storage.** Select where to save photos and videos. You can either save the files to the main memory, or to a storage card if available.
- **Keep Backlight.** Turn the backlight on or off. This overrides your device backlight settings while you are using the camera.
- **Shutter Sound.** Play a shutter sound when you tap the Virtual Camera button.
- **Image Properties.** Adjust the image properties.



- 1 Tap a property to adjust.
- 2 Save the settings.
- 3 Decrease the value.
- 4 Reset all properties to default.
- 5 Increase the value.
- 6 Close the Image Properties screen without applying and saving the changes.

- **Effect.** Apply a special effect to your photos or videos.



- **Metering Mode.** Select a metering mode to allow the camera to measure the amount of light and calculate the best-fit exposure value before capturing.
- **Prefix.** The file name of a newly captured photo or video is set to “IMAGE” or “VIDEO” followed by a sequential number, for example: IMAGE\_001.jpg. You can also choose the current date or date and time as the file name prefix.


**Note** You can not change the file name prefix when saving captured photos to a storage card. Captured photos are named using the convention IMAGnnnn.jpg (where ‘nnnn’ is the counter), and are saved to the \DCIM\100MEDIA folder on the storage card.

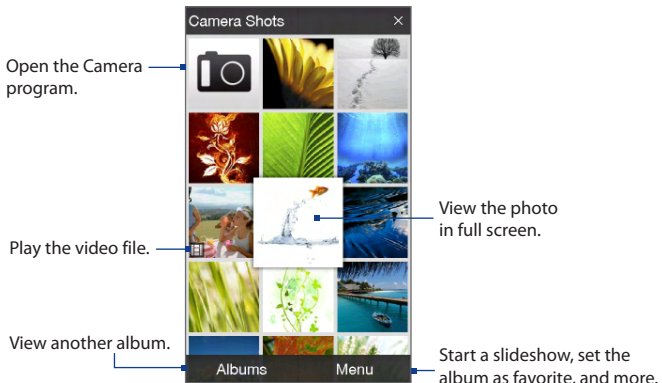
- **Counter.** Reset the file naming counter back to 1.
- **Flicker Adjustment.** When taking indoor shots under fluorescent lighting, keep this setting on **Auto** or change it to the proper frequency (**50Hz** or **60Hz**) of the power in your country to reduce flicker.
- **Grid** (Photo mode). Show a grid on the screen so you can easily frame and center your subjects.
- **Record with Audio** (Video or MMS Video mode). Select **On** to record videos with audio, or **Off** to record videos without audio.
- **Recording Limit** (Video mode). Set the maximum duration or file size for recording video.
- **Template** (Picture Theme mode). Select a template.
- **Template Folder** (Picture Theme mode). By default, templates are stored in the \My Documents\Templates folder on the device’s **Main Memory**. If you transferred some templates to a storage card, set this option to **Main + Card**.
- **Show Reminder** (Contacts Picture mode). Select **On** if you want the Camera to prompt you to assign the captured picture to a contact.
- **Direction** (Panorama mode). Choose the direction in which to stitch the photos in a panorama.
- **Stitch Count** (Panorama mode). Select the number of shots to take and stitch into a panorama.

## 11.2 Viewing Photos and Videos Using Album

Use **Album** to view photos and videos in your device.

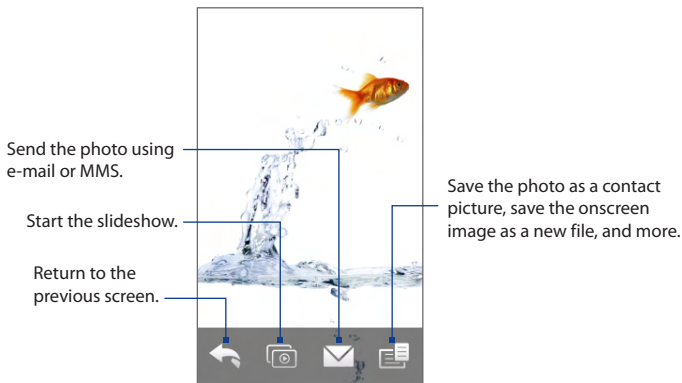
### To open Album

On the Home screen, slide to the **Photos and Videos** tab, and then tap **Album**. You can also tap  while on the Camera program to open Album.



## Viewing photos

While viewing a photo, tap the screen to open the menu.




### To view the next or previous photo in the album


View the next photo by swiping your finger across the screen from right to left. Go back to the previous photo by swiping your finger from left to right.

### To zoom in or out on a photo

Double-tap the area on the photo you want to zoom in on. To zoom out, double-tap the screen again.

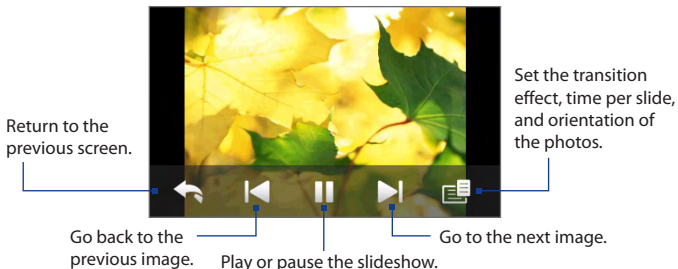
- Tips**
- Use the zoom bar to zoom in on the center of the photo. Slide your finger to the right of the zoom bar to zoom in. Slide to the left of the zoom bar to zoom out.
  - When you zoom in on a photo, tap and hold the screen to pan and view other areas of the photo. When you zoom in on a photo, tap the screen, tap  and then select **Save Screen Image** to save the zoomed in photo as a new file.

### To view a slideshow of photos in the current album

While viewing a photo, tap the screen, and then tap .

- Note**
- Animated GIF and video files are excluded from the slideshow.
  - The screen orientation automatically switches to landscape mode during the slideshow.

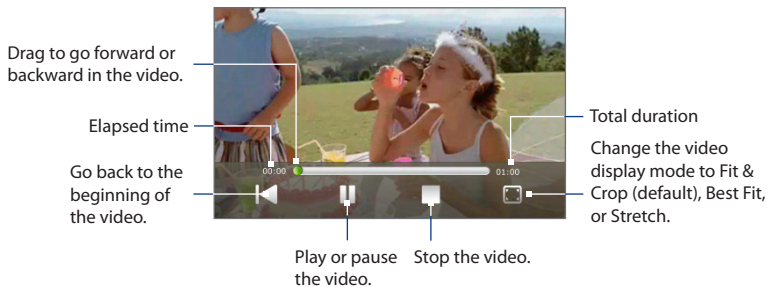
During the slideshow, tap the screen to show the playback controls.




**Tip** If the photos are in your favorite album, you can start the slideshow from the **Photos and Videos** tab on the Home screen. See “Photos and Videos” in Chapter 3 for details.

## Playing videos

While playing back video, tap the screen to show the playback controls.



## Closing Album

When viewing photos in full screen, tap the screen to show the on-screen menu or playback controls and then tap  to go back to the main Album screen.

Tap  on the main Album screen to close Album.

## 11.3 Using Windows Media® Player Mobile

**Windows Media® Player Mobile** plays digital audio and video files that are stored on your device or on the web.

### To open Windows Media® Player Mobile

Tap **Start > All Programs > Windows Media**.

Windows Media® Player Mobile opens with the Library screen. Use the Library screen to find and play songs, videos, and playlists that are stored on your device or on the storage card.

## Playing media

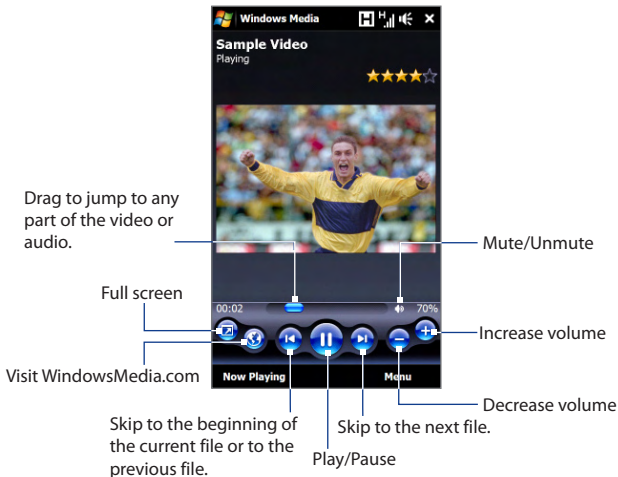
### To update the Library

In most cases, Windows Media® Player Mobile automatically updates the library. However, you can manually update the library to ensure that it contains new files that you recently copied to your device or to the storage card. Tap **Menu > Update Library** to manually update the library list.

### To play audio and video files

1. On the Library screen, tap the Library arrow (near the top of the screen), then tap the media storage that you want use, for example, **Storage Card**.
2. Select a category (for example, My Music or My Playlists).
3. Tap and hold the item that you want to play (such as a song, album, or artist name), and then tap **Play**.

The playback screen opens and plays the audio or video file.



## Synchronizing video and audio files

Use the latest version of Windows Media® Player on your computer to synchronize digital media files from your computer to your device. This ensures that protected files and album art (for skins) are correctly copied to your device.

### To automatically synchronize content to your device

1. On your computer, open Windows Media® Player, then connect your device to your computer.
2. In the Device Setup Wizard, select **Yes, search my computer now.**

**Note** If you have previously opened Windows Media® Player and searched for media on your computer, you are not prompted to search your computer in step 2.

3. On the Device Setup dialog box, enter a name for your device and click **Finish**.

**Note** If you installed a storage card that has a capacity of more than 4GB and your entire library can fit into the storage card, Windows Media Player will automatically synchronize your music files. The device also needs to be set to **Disk Drive** mode for Windows Media Player to automatically synchronize.

4. On the left panel of Windows Media® Player, right-click the name of your device and click **Set Up Sync**.

**Note** To set up media synchronization on a storage card, right-click Storage Card in the left panel of Windows Media® Player, then click **Set Up Sync**.

5. Select the playlist(s) that you want to sync between your computer and device, then click **Add**.

**Note** On the Device Setup dialog box, make sure that the **Sync this device automatically** check box is selected.

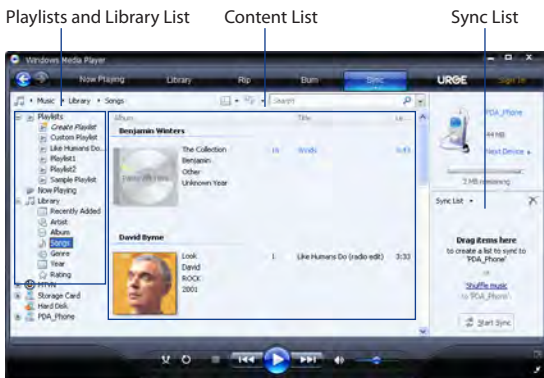
6. Click **Finish**.

The files begin synchronizing to your device. The next time you connect your device to your computer while Windows Media® Player is running, synchronization will start automatically.

### **To manually synchronize content to your device**

1. If you have not set up media synchronization between your device and computer, follow steps 1 to 3 in “To automatically synchronize content to your device”.
2. Click the **Sync** tab on the Windows Media® Player of your computer. Select a Playlist or a Library on the left panel of the Windows Media® Player.
3. From the Content List, drag the media files that you want to sync to your device and drop them to the Sync List.





4. Click **Start Sync** to start synchronizing the selected files to your device.

- Notes**
- Use Windows Media® Player 11 or higher on your computer to synchronize media files to your device.
  - Audio files copy faster if Windows Media® Player is configured to automatically set the quality level for audio files copied to your device. For more information, see the Windows Media® Player Help.

## Creating playlists

Create a new playlist by saving the current Now Playing playlist and giving it a new name.

### To save a new playlist

1. If you are not on the Library screen, tap **Menu > Library**.
2. Tap to select a category (for example, My Music or My Playlists).

3. Select a media file that you want, then tap **Menu > Queue Up**. This adds the file to the Now Playing list. Repeat this step until you have added all desired media files to the Now Playing list.  
**Note** You cannot select multiple files simultaneously.
4. After adding the media files, tap **Menu > Now Playing**.
5. On the Now Playing screen, tap **Menu > Save Playlist**.
6. Enter the playlist name, then tap **Done**.
7. To play back the playlist you created, tap My Playlists in the Library, select your playlist, then tap **Play**.

## Troubleshooting

For troubleshooting information, visit <http://www.microsoft.com/windowsmobile/en-us/help/more/windows-media-player.msp>

## 11.4 Using FM Radio

**FM Radio** lets you to listen to FM radio stations on your device. Since FM Radio uses the provided stereo wired headset as the antenna, connect the headset first to the earphone jack of your device before you open the program.

### To open FM Radio

Tap **Start > All Programs > FM Radio**.

The first time you open FM Radio, it automatically scans for available FM stations, saves them as presets, and plays the first FM station found. For information about saving favorite stations as presets, see "Saving presets."




- |   |   |
|---|---|
| <p><b>1</b> FM Radio status</p> <hr/> <p><b>2</b> FM radio frequency</p> <hr/> <p><b>3</b> Search the FM band for the next lower FM station.</p> <hr/> <p><b>4</b> Fine tune the radio frequency by -0.1 MHz.</p> <hr/> <p><b>5</b> Select headset or speaker audio output.</p> <hr/> <p><b>6</b> Turn off FM radio.</p> <hr/> <p><b>7</b> Station preset number (if you saved the station as preset)</p> <hr/> <p><b>8</b> Radio signal strength</p> <hr/> | <p><b>9</b> Select mono or stereo audio.</p> <hr/> <p><b>10</b> Search the FM band for the next higher FM station.</p> <hr/> <p><b>11</b> Fine tune the radio frequency by +0.1 MHz.</p> <hr/> <p><b>12</b> Turn the sound on or off.</p> <hr/> <p><b>13</b> Preset FM stations. Tap a station to tune in.</p> <hr/> <p><b>14</b> Set FM Radio options, such as Scan and Save, mute the audio, and select the audio output.</p> <hr/> |
|---|---|

**Tip** Press the VOLUME UP and VOLUME DOWN buttons on the side of the device to adjust the volume.

## Saving presets

Save favorite FM stations as presets so you can easily access them. You can save up to 20 preset radio stations. Radio stations that are saved on Presets 1 to 6 can be accessed on the FM Radio screen.

### To save FM stations as presets

1. Tune in to the desired FM frequency, and then tap **Presets**.
2. On the Presets list, tap  that appears on the desired preset number where you want to save the FM station.



**Tip** Tap  to remove a favorite FM station from the list.

3. When done, tap **OK**.

### To listen to a preset FM station

On the FM Radio screen, tap the station preset button. If the station preset button is not on the screen, tap **Preset**, then tap the station you want to listen to.

## Minimizing or turning off FM Radio

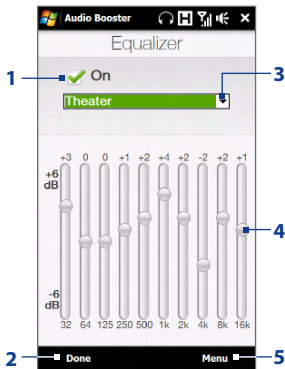
When you tap  on the FM Radio screen, the program continues to run in the background and allows you to continue listening to the radio while you use other programs. To turn off FM radio, tap  on the upper right corner of the FM Radio screen.

## 11.5 Using Audio Booster

**Audio Booster** optimizes sound by providing an audio equalizer for a better listening experience. To use Audio Booster, connect the supplied wired headset to your device.

### To open Audio Booster

Tap **Start > All Programs > Audio Booster**.



- 1 Enable or disable the equalizer.
- 2 Apply the modified settings.
- 3 Choose the equalizer preset to use.
- 4 Drag the sliders to adjust the frequency.
- 5 Exit Audio Booster without applying the modified settings, or save or delete preset equalizer settings.

### To create a custom equalizer preset

1. Adjust the frequency bands to your desired values by dragging the equalizer controls.
2. When finished, tap **Menu > Save as Preset**.
3. Enter a preset name and then tap **Done**. The equalizer preset is added to the preset list box.

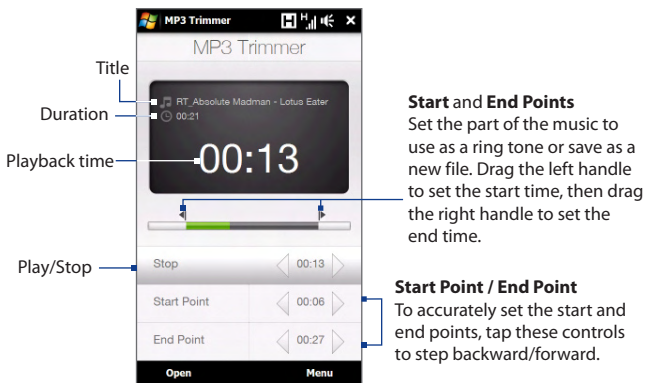
**Note** To delete a custom equalizer preset, select it on the preset list box and then tap **Menu > Delete Preset**. You cannot delete pre-installed equalizer presets.

## 11.6 Using MP3 Trimmer

Use **MP3 Trimmer** to trim an MP3 file and save it as a new file or set it as a ring tone.

### To open MP3 Trimmer

Tap **Start > All Programs > MP3 Trimmer**.



### To trim an MP3 file

1. Tap **Open** to locate and select the MP3 file you want to trim.
2. On the MP3 Trimmer screen, use the stylus to adjust the **Start Point** and **End Point**.

**Note** After you set the **Start Point**, the MP3 file plays from the start point. After you set the **End Point**, the MP3 file plays from 5 seconds before the end point.

3. Tap **Play** to play the trimmed file.
4. Tap **Menu** and select to whether set the file as the default ring tone, save the file to the ring tone folder, or save it as another file name.

# Chapter 12

## Programs

---

### 12.1 Managing Programs

#### Launching a program

Tap **Start > All Programs**, and then tap a desired program. To view more programs, scroll down the screen by swiping your finger upward. See “Start Screen” in Chapter 1 for details.

#### Installing a program

You can install or uninstall additional programs, such as the programs in the Application disc or purchased programs. Your device does not allow you to uninstall most of the preinstalled programs.

**Note** Before you purchase additional programs, make sure that they are compatible with your device.

#### To install a program

1. Download the program to your computer, or insert the CD/DVD that contains the program into your computer.  
You may see a single **\*.exe** file, a **\*.zip** file, a **Setup.exe** file, or several versions of files for different device types and processors. Be sure to select only the programs designed for your device.
2. Read any installation instructions or documentation that comes with the program. Many programs provide special installation instructions.

3. Connect your device to the computer.
4. Double-click the installation setup file.

### To uninstall a program

1. Tap **Start** > **Settings**, and then tap **All Settings**.
2. On the **System** tab, tap **Remove Programs**.
3. In the **Programs in storage memory** list, select the program you want to remove, and then tap **Remove**.

## 12.2 Contacts

**Contacts** is your address book for people and businesses you communicate with. You can add **Outlook contacts** from your device or synchronized with your PC or the Exchange Server, **SIM contacts** stored on the SIM card, or **Windows Live™ contacts**.

**Note** You can only add Windows Live™ contacts after you have set up Windows Live™ on your device. See "Using Windows Live™" in Chapter 8.

### To open the Contacts screen

Tap **Start** > **All Programs** > **Contacts**.

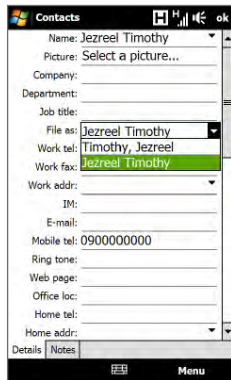


## Adding new contacts

### To add a contact on your device

1. On the Contacts screen, tap **New**, select **Outlook Contact**, and enter the contact information.
2. In the **File as** field, choose how you want the contact name to appear in the contact list.
3. To add a photo of the contact, tap **Select a picture**, and then select the picture file or tap **Camera** to take a photo of the contact.
4. To assign a ring tone to the contact, tap the **Ring tone** field, scroll through the list of tones, then select a desired tone.
5. When finished, tap **OK**.

**Tip** To edit contact information, tap the contact name and then tap **Menu > Edit**.



### To add a contact to your SIM card

1. On the Contacts screen, tap **New**, then select **SIM Contact**.
2. Enter a contact name and phone number, and then tap **OK**.

**Tip** You can also use the SIM Manager to add and edit contacts on your SIM card. For more information, see "SIM Manager" in this chapter.

## Organizing and searching contacts

### To group similar contacts

For easier contact management, you can group contacts by assigning them into categories.

1. Create a new Outlook contact or edit an existing Outlook contact.
2. Tap **Categories**.
3. Select a preset category such as Business or Personal, or tap **New** to create your own category.
4. When finished, tap **OK**.

### To find a contact on your device

There are several ways to find a contact when your contact list is long:

- Begin entering a contact name in the provided text box until the contact you want is displayed.
- On the Quick Scroll bar on the right of the Contacts screen, scroll to or tap a letter to go directly to the part of the contacts list where contact names start with that letter.

**Note** You can disable the Quick Scroll bar by tapping **Menu > Options** and selecting the **Show alphabetical index** check box. This shows the alphabetical index at the top of the Contacts list.

- Filter the list by categories. In the contact list, tap **Menu > Filter**, then tap a category you've assigned to a contact. To show all contacts again, select **Menu > Filter > All Contacts**.



## Sharing contact information

You can quickly send contact information to another mobile phone or device through Bluetooth beaming or text messaging.

### To beam the contact information

1. Tap and hold a contact on the Contacts screen.
2. Tap **Menu > Send Contact > Beam**, then select the device where to send the contact.

**Note** Before beaming, make sure Bluetooth is turned on and set to visible mode on your device and the target mobile device. You can also beam contact information to your computer. See Chapter 9 for details.

### To send the contact information via text messaging

1. Tap and hold a contact on the Contacts screen.
2. Tap **Menu > Send Contact > Text Messages**.
3. Select the contact information you want to send, and then tap **Done**.
4. In the new text message, enter the mobile phone number of the recipient, and then tap **Send**.

## 12.3 JBlend

Use **JBlend** to download, install and manage MIDlets or MIDlet suites on your device. MIDlets are Java applications such as games and tools that can run on mobile devices, while a MIDlet suite is a collection of one or more MIDlets. Your device supports Java 2 Micro Edition (J2ME).

### To open JBlend

Tap **Start > All Programs > JBlend**.

## Installing and launching MIDlets/MIDlet suites

### To download and install from the Internet

1. Open an Internet browser, such as Opera Mobile.
2. Navigate to the web page with the link for the MIDlet/MIDlet suite you want to download, and tap the link.
3. Follow the onscreen instructions to install and run the MIDlet/MIDlet suite.

### To install from your device

You can copy MIDlets/MIDlet suites from your PC to your device using the USB sync cable or Bluetooth connection.

1. On the JBlend screen, tap **Install > Local Install**. The program then searches for MIDlets/MIDlet suites on your device and displays them in a list.
2. From the list, tap the MIDlet/MIDlet suite that you want to install.
3. Follow the onscreen instructions to install and run the MIDlet/MIDlet suite.

### To run a MIDlet/MIDlet suite

On the JBlend screen, open the folder that contains the MIDlet/MIDlet suite, and then tap the MIDlet/MIDlet suite.

## Managing MIDlets/MIDlet suites

You can update MIDlets/MIDlet suites, or uninstall them to free up memory space.

### To update a MIDlet/MIDlet suite

1. On the JBlend screen, tap the Input Panel icon, and then tap the up/down navigation keys on the on-screen keyboard to select the MIDlet/MIDlet suite that you want to update.
2. Tap **Menu > Application > Update Info**. JBlend then searches for updates for the selected MIDlet/MIDlet suite.

### To uninstall a MIDlet/MIDlet suite

Before you uninstall a MIDlet, make sure that it is not running.

1. On the JBlend screen, tap and hold the MIDlet, and then tap **Delete**.
2. Tap **Yes** to confirm.

**Note** To uninstall all MIDlets and folders, tap **Menu > Application > Delete All**.

## 12.4 Microsoft® Office Mobile

**Microsoft® Office Mobile** consists of the following applications:

- **Microsoft® Office Excel® Mobile** lets you create and edit Excel workbooks and templates on your device.
- **Microsoft® Office OneNote® Mobile** lets you create notes with text, photos, and voice recordings for synchronization later with Microsoft® Office OneNote® 2007 on your computer.
- **Microsoft® Office PowerPoint® Mobile** allows you to view (not create) slide show presentations in \*.ppt and \*.pps formats.
- **Microsoft® Office Word Mobile** lets you create and edit documents and templates in Word Mobile and save them as \*.doc, \*.rtf, \*.txt, and \*.dot files.

### To use Microsoft Office Mobile

Tap **Start > All Programs**, and then tap the Office Mobile application that you want to use.

Word Mobile and Excel Mobile do not fully support some features of Microsoft® Office Word and Microsoft® Office Excel®. To see a complete list of features that are not supported in Word Mobile and Excel Mobile, see Help on your device.

- Tips**
- By default, Word Mobile saves documents in **.docx** format, while Excel Mobile saves workbooks in **.xlsx** format. If you want to open these types of files on a computer that uses Microsoft Office 2000, Office XP, or Office 2003, you need to download and install the **File Format Converter** in your computer. Download the File Format Converter at <http://www.microsoft.com/downloads/>.
  - If you want Word Mobile to save documents in **.doc** format, tap **Menu > Tools > Options** (or **Menu > Options** when no document is opened), then change the **Default template** to **Word 97-2003 Document (.doc)**.
  - If you want Excel Mobile to save workbooks in a format that is compatible with Microsoft Office 2000, Office XP, or Office 2003, tap **Menu > Options** (with no workbook opened), then change the **Template for new workbook** to **Blank 97-2003 Workbook**.

## 12.5 SIM Manager

**SIM Manager** allows you to view the contents of your SIM card, transfer contacts from your SIM card to your device or vice versa, and make a call to a SIM contact.

### To create a contact on your SIM card

1. Tap **Start > All Programs > SIM Manager**.
2. Tap **New** and enter the contact name and phone number.
3. Tap **Save**.

**Tip** To change contact information on your SIM card, tap a SIM contact, edit the information, and then tap **Save**.

### To copy SIM contacts to your device

If you have saved contacts on your SIM card, you can copy them into Contacts on your device.

1. On the SIM Manager screen, select the desired contact, or select all SIM contacts by tapping **Menu > Select All**.
2. Tap **Menu > Save to Contacts**.

### To copy contacts to the SIM card

Only one phone number per contact name can be stored on a SIM card.

1. On the SIM Manager screen, tap **Menu > Contacts to SIM**.
2. Select the check boxes of the contact's phone numbers that you want to copy to your SIM card, then tap **Save**.

When you copy a contact that has several phone numbers to your SIM card, SIM Manager separately saves each number by appending an indicator at the end of each name.



By default, /M, /W, and /H are appended to indicate mobile, work, and home phone numbers respectively. To edit the default indicators and to select which other types of numbers to save to the SIM card, tap **Menu > Tools > Options**.

## 12.6 Voice Recorder

**Voice Recorder** lets you create a voice recording and send it as an MMS or e-mail attachment, beam it via Bluetooth, or set it as your ring tone.

**Note** Voice Recorder saves recordings in AMR-NB format.

### To create and play a voice recording

1. Tap **Start > All Programs > Voice Recorder**.
2. Hold the device's microphone close to the sound source.
3. Touch **Record** or  to start recording. Tap **Stop** or  to end the recording.
4. Touch the voice recording on the screen to play it.

### To choose where to save voice recordings

By default, all recordings are saved in the **My Voices** folder of the device. You can choose another folder or create a new folder to save your voice recordings.

**Note** If a storage card is installed before you open Voice Recorder, the recordings are saved in the **My Voices** folder on the storage card by default.

1. Tap the arrow beside the folder name on the top-left of the screen.
2. In the menu that opens, choose an existing folder or touch **Add/Delete** to create a new folder.

### Sending and managing your voice recordings

To send a voice recording via MMS, e-mail, or Bluetooth, to set a voice recording as a ring tone, or to rename/move a recording, tap and hold the recording and choose from the available options.



# Chapter 13

## Managing Your Device

---

### 13.1 Copying and Managing Files

Copy files between your device and computer, or copy files to a storage card installed on your device. You can also efficiently manage your files and folders using File Explorer.

#### To copy files using Windows Mobile Device Center or ActiveSync

1. Connect your device to the computer.
2. Click **File Management > Browse the contents of your device** in Windows Mobile Device Center on your computer, or click **Explore** in ActiveSync on your computer. This displays the content of your device in Windows Explorer on your computer.
3. To copy a file from your device to your computer:
  - a. Browse the contents of your device, right-click the file you want to copy, and then click **Copy**.
  - b. Right-click a folder on your computer, and then click **Paste**.
4. To copy a file from your computer to your device:
  - a. Browse the folders on your computer, right-click the file you want to copy, and then click **Copy**.
  - b. Right-click a folder on your device, and then click **Paste**.

### To manage files on your device using File Explorer

**File Explorer** lets you browse and manage the contents of your device. The root folder on the device is named **My Device**, and contains the following folders: My Documents, Program Files, Windows, and more.

1. Tap **Start > All Programs > File Explorer**.
2. Tap a folder or file to open it.
3. To return to an upper level folder, tap **Up**.
4. To quickly delete, rename, or copy a file, tap and hold the file, and then choose the desired operation on the shortcut menu. To copy or delete multiple files, tap and drag over the desired files, tap and hold the selection, and then choose an option from the menu.

### To copy files to a storage card









1. Make sure that the storage card is properly installed on your device.
2. Connect the device to your computer using the USB cable, select **Disk Drive** on the Connect to PC screen, and then tap **Done**.
3. On your computer, navigate to the removable disk drive, and then start copying files to the storage card.
4. When finished, disconnect the device from your computer.

## 13.2 Settings on your Device










You can adjust the device settings to suit the way you work. Use the Settings tab to adjust basic device settings. See “Settings” in Chapter 3 for details.











To see all available settings, tap **Start > Settings**, and then tap **All Settings**.

## Personal tab










Icon	Description
	<b>Buttons</b> Assign a program or function to a hardware button or set the function you want to execute (for instance, lock the device) when you press and hold the END button.
	<b>Input</b> Set options for each of the input methods.
	<b>Lock</b> Set a password for your device.
	<b>Menus</b> Set which programs appear in the Start menu. <b>Note</b> The Start menu is disabled when the TouchFLO 3D Home screen is enabled. To enable the Start menu, tap <b>Start &gt; Settings</b> , tap <b>All Settings &gt; Personal tab &gt; Today &gt; Items</b> tab, and then clear the <b>TouchFLO 3D</b> check box.
	<b>Owner Information</b> Enter your personal information on your device.
	<b>Phone</b> Customize phone settings such as the ring tone, or set a PIN number for your SIM card.
	<b>Sounds &amp; Notifications</b> Enable sounds for events, notifications, and more, and set the type of notification for different events.
	<b>Today</b> Customize the appearance of the Home screen and the information to display on it. <b>Note</b> You will not see the Today screen when the TouchFLO 3D Home screen is enabled. To display the Today screen, tap <b>Start &gt; Settings</b> button, tap <b>All Settings &gt; Personal tab &gt; Today &gt; Items</b> tab, and then clear the <b>TouchFLO 3D</b> check box.

## System tab

Icon	Description
	<b>About</b> This is where you can see basic information such as the Windows Mobile® version and type of processor used on your device. You can also specify a name for your device.
	<b>Auto Volume Control</b> Automatically adjust the recording volume to an even level.
	<b>Certificates</b> See information about certificates that are installed on your device.
	<b>Clear Storage</b> Reset your device to factory default settings.
	<b>Clock &amp; Alarms</b> Set the device clock to the date and time of your locale or to a time zone you are visiting. Alarms can also be set on specified days and times of the week.
	<b>Customer Feedback</b> Set your device to automatically send information about how you use Windows Mobile. By default, this option is disabled.
	<b>Device Information</b> See information about the firmware version, hardware, identity, and the duration of calls made on your device.
	<b>Encryption</b> Encrypt files on your storage card. Encrypted files are only readable on your device.
	<b>Error Reporting</b> Enable or disable the device's error reporting function. When this function is enabled and a program error occurs, technical data about the state of the program and your computer is logged in a text file and delivered to Microsoft's technical support if you choose to send it.
	<b>External GPS</b> Set the appropriate GPS communication ports, if required. You may need to do this when there are programs on your device that access GPS data or you have connected a GPS receiver to your device.

Icon	Description
	<b>G-Sensor</b> Recalibrate the G-Sensor of the device. Use this function when auto-rotate is not working properly.
	<b>Managed Programs</b> Displays the programs that were installed on your device using System Center Mobile Device Manager.
	<b>Memory</b> Check the device memory allocation and storage card information.
	<b>Power</b> Check the remaining battery power. You can also set the brightness of the backlight and the timeout for turning off the display (switching the device to Sleep mode) to conserve battery power.
	<b>Regional Settings</b> Set the regional configuration to use, including the format for displaying numbers, currency, date, and time on your device.
	<b>Remove Programs</b> Uninstall programs that you previously installed on your device.
	<b>Screen</b> Recalibrate the screen, apply ClearType to display text more clearly, and change the screen text size.
	<b>Task Manager</b> Stop running programs and set the (X) button to end programs immediately when you tap the button. For more information, see “Using Task Manager” in this chapter.
	<b>TouchFLO</b> Set the device to vibrate when you tap the tabs, links, or other onscreen items of supported applications.
	<b>Windows Update</b> Link to Microsoft's web site and update Windows Mobile® on your device with the latest security patches or fixes, if they are available.

## Connections tab

Icon	Description
	<p><b>Advanced Network</b> Turn HSPA on/off, set the GPRS authentication method, and set the line type to use when making a circuit switch data (CSD) connection. HSPA is a 3.5G digital data service that provides high-speed downstream/upstream data rates. Check with your wireless service provider whether HSPA is supported in your area.</p>
	<p><b>Beam</b> Set your device to receive incoming Bluetooth beams.</p>
	<p><b>Bluetooth</b> Turn Bluetooth on, set your device to visible mode, and scan for other Bluetooth devices.</p>
	<p><b>Comm Manager</b> Manage your device's connections (including the phone, GPRS/3G, Wi-Fi, and Bluetooth) or turn the phone function on or off.</p>
	<p><b>Connection Setup</b> Configure your device's data connections, such as GPRS, and WAP, based on the detected SIM card or selected network operator. See "Using Connection Setup" in this chapter for details.</p>
	<p><b>Connections</b> Set up one or more types of modem connection for your device, such as phone dial-up and GPRS, so that your device can connect to the Internet or a private local network.</p>
	<p><b>Domain Enroll</b> Enroll your device in your company's domain to let System Center Mobile Device Manager manage the device. Ask your network administrator for more details.</p>
	<p><b>USB to PC</b> Set the type of USB connection to your PC. Select the ActiveSync option for synchronizing data, or use Disk Drive mode for transferring files.</p>
	<p><b>Wi-Fi</b> Turn the Wi-Fi function on or off, scan for available wireless networks, see information about the active wireless network, and customize Wi-Fi settings.</p>

## 13.3 Changing Basic Settings

### Display settings

#### To manually adjust the screen brightness

By default, your device automatically adjusts the screen brightness according to the ambient lighting.

1. Tap **Start > Settings**, and then tap **All Settings**.
2. On the **System** tab, tap **Power > Backlight** tab.
3. Clear the **Auto adjust backlight** check box.
4. Adjust the brightness by dragging the slider under **On battery power** and **On external power**.

#### To automatically turn off the screen backlight when the device is not in use

1. Tap **Start > Settings**, and then tap **All Settings**.
2. On the **System** tab, tap **Power > Advanced** tab.
3. In **On battery power** and **On external power**, specify the time before the screen backlight turns off.

#### To increase or decrease the size of text on the screen

1. Tap **Start > Settings**, and then tap **All Settings**.
2. On the **System** tab, tap **Screen > Text Size** tab.
3. Move the slider to increase or decrease the text size.

#### To re-calibrate the touch screen

The device touch screen is calibrated before shipment. Re-calibrate the touch screen if it does not accurately respond to screen taps.

1. While the device is on, press and hold the VOLUME UP and VOLUME DOWN buttons, and then tap the screen to open the align screen.
2. Follow the on-screen instructions to complete the calibration.

## Device name

The device name is used to identify your device when synchronizing with a computer, connecting to a network, or restoring information from a backup.

**Note** If you synchronize multiple devices with the same computer, each device must have a unique name.

### To change the device name

1. Tap **Start > Settings**, and then tap **All Settings**.
2. On the **System** tab, tap **About > Device ID** tab.
3. Enter the device name.

- Notes**
- The device name must begin with a letter, consist of letters from **A** to **Z**, numbers from **0** to **9**, and cannot contain spaces. Use the underscore character to separate words.
  - If you enroll your device to your company's domain, the device name will be changed to be the same as the one used to enroll the device.

## Ringer settings

### To change the ring type and ring tone

1. Tap **Start > Settings**, and then tap **Sound**.
2. Scroll down and then tap **Ring Type**. Select the ring type you want to use and then tap **Done**.
3. Tap **Ringtone** and then select the ring tone you want to use.
4. Tap **Done**.

- Tips**
- You can use **\*.wav**, **\*.mid**, **\*.mp3**, **\*.wma**, or other types of sound files that you downloaded from the Internet or copied from your computer. For a complete list of supported audio file formats, see “Specifications” in the Appendix.
  - To use your sound files as ring tones, copy them first to the **/My Documents/My Ringtones** folder on your device, and then select the sound from the **Ring tone** list of your device. For more information about copying files, see “Copying and Managing Files” in this chapter.



### To choose how to be notified about events or actions

1. Tap **Start > Settings**, and then tap **Sound > Advanced**.
2. On the **Sounds** tab, choose how you want to be notified by selecting the appropriate check boxes.
3. On the **Notifications** tab, in **Event**, tap a ring type and ring tone for that event or action from the lists below.

**Tip** Turning off sound notifications helps conserve battery power.

### Phone services

You can change the settings of various phone services for your device. Phone services may include Call Forwarding, Call Waiting, Voicemail, and more. Contact your wireless service provider to find out about the availability of phone services for your device.

### To access and change settings of phone services

1. Tap **Start > Settings**, and then tap **Communications**.
2. On the **Comm Manager** screen, tap **Phone > Phone services**.
3. Select the service you want to use, and then tap **Get Settings**.
4. Choose your desired options, and then tap **OK**.

For more information about customizing settings of phone services, see the Help on your device.

## 13.4 Using Connection Setup

After you insert a new SIM card and power on your device, you can use **Connection Setup** to automatically configure your device's data connections, such as 3G/GPRS and WAP.

**Note** For details on how to automatically configure the data connections, see "Importing SIM contacts and auto configuring data connection settings" in Chapter 1.

### To manually select the network operator to use for data connections

You can manually select your network operator and allow Connection Setup to reconfigure your device's data connections settings based on the selected operator.

1. Tap **Start > Settings**, and then tap **All Settings**.
2. On the **Connections** tab, tap **Connection Setup**.
3. Select the network **Country** and **Operator** you want to use, then tap **OK**.

**Note** If you choose a country and/or operator that is different from the installed SIM card network operator, you may not be able to access network services.

4. When prompted to confirm whether you want to configure the data connection settings, tap **Yes**.
5. After Connection Setup completes the configuration, tap **Restart**.

## 13.5 Using Comm Manager

**Comm Manager** lets you easily turn on and off the communication features of your device such as the phone, Bluetooth, Wi-Fi, and data connection.


### To access Comm Manager

Tap **Start > Settings**, and then tap **Communications**.




- |   |   |
|---|---|
| <p><b>1</b> Switch Airplane Mode on or off. See “Turning the Phone Function On and Off” in Chapter 2.</p> <hr/> <p><b>2</b> Access the phone settings and change the PIN codes, configure phone services, and more.</p> <hr/> <p><b>3</b> Connect a Bluetooth hands-free or stereo headset. See Chapter 9 for details.</p> <hr/> <p><b>4</b> Connect to a wireless network. See Chapter 8 for details.</p> <hr/> <p><b>5</b> Open ActiveSync and adjust the push e-mail settings. See Chapter 7 for details.</p> <hr/> <p><b>6</b> Open Connection Setup and automatically configure your data connection settings.</p> <hr/> | <p><b>7</b> Switch the phone on or off. See “Turning the Phone Function On and Off” in Chapter 2.</p> <hr/> <p><b>8</b> Switch Bluetooth on or off. See Chapter 9 for details.</p> <hr/> <p><b>9</b> Switch Wi-Fi on or off. See Chapter 8 for details.</p> <hr/> <p><b>10</b> Switch between automatically receiving (as items arrive) or manually retrieving Outlook e-mails. See Chapter 7 for details.</p> <hr/> <p><b>11</b> Connect or disconnect active data connections (3G/GPRS, or EDGE).</p> <hr/> <p><b>12</b> Adjust the phone, Bluetooth, and Wi-Fi settings.</p> <hr/> |
|---|---|

## 13.6 Using Task Manager

**Task Manager** lets you view and stop running programs, configure the  button, and enable the Quick Menu on the Home screen.

### To open Task Manager



Tap the **Quick Menu** button on the top-right corner of the Home screen to open the Quick Menu, and then tap .

### To configure the Exit () button

By default, running programs are shut down when you tap and hold the  button.

1. On the Task Manager screen, tap the **Button** tab.

**Note** When you clear **Enable the “X” button to end running programs**, tapping the Exit button only closes a program screen. The program is not ended and continues to run in the background.

2. Choose the action for shutting down programs (by tapping the , or by tapping and holding the  button).
3. Tap **OK**.

### To add a running program to the exclusive list

If you add a running program to the **Exclusive Programs List**, it will not be closed when you tap **Stop Selected** or **Stop All** and will not be listed in the Quick Menu on the Home Screen.

1. On the Task Manager screen, tap the **Running** tab.
2. Tap and hold the program name, and then tap **Add Exclusive**.

**Tip** To remove a program from the exclusive list, tap and hold the program on the **Running** tab, then tap **Remove from Exclusive**.

## 13.7 Protecting Your Device

### Protect your SIM card with a PIN

You can protect your SIM card by requiring a PIN (personal identification number) every time the device is turned on. You will not be able to use the phone or the data connection until you enter the correct PIN.

#### To enable the SIM card PIN

1. Tap **Start** > **Settings**, and then tap **Communications**.
2. On the **Comm Manager** screen, tap **Phone** > **PIN Code**.
3. Enter the PIN, tap **OK**, and then tap **OK** on the dialog box.

- Tips**
- To change the PIN, tap **Change PIN** on the Phone Settings screen.
  - Emergency calls can be placed at any time, without requiring a PIN.

### Protect your device with a password

You can help keep your data more secure by requiring a password every time the device is turned on.

#### To set a device password

1. Tap **Start** > **Settings**, and then tap **All Settings**.
2. On the **Personal** tab, tap **Lock**.
3. Select the **Prompt if device unused for** check box, then specify the idle time before the device requires a password.
4. In the **Password type** box, select the type of password you would like to use.  
**Tip** If your device is configured to connect to a network, use an alphanumeric password for increased security.
5. Enter the password in both the **Password** and **Confirm** boxes.
6. Tap **OK**. The next time the device is turned on, you will be prompted to enter your password.

- Notes**
- To ensure that you can always make emergency calls, do not begin your password with the digits of your local emergency number.
  - If you entered a hint, the hint will be displayed after the wrong password is entered five times.
  - Each time a wrong password is entered, the device response time gets longer until the device appears to be not responding.
  - If you forget your password, you can hard reset or clear the device memory. For more information about hard resetting the device and clearing the memory, see “Resetting Your Device”.

## Encrypt files on your storage card

You can set your device to encrypt files as they are saved on the storage card.

1. Tap **Start > Settings**, and then tap **All Settings**.
2. On the **System** tab, tap **Encryption**.
3. Select **Encrypt files when placed on a storage card**.

- Notes**
- Encrypted files can only be read on the device that encrypted them.
  - Encrypted files are opened just like other files, provided you are using the device that encrypted them. There is no separate step for you to take to read these files.

**Important** If **Encrypt files when placed on a storage card** is enabled, backup all files from the storage card **before** using Clear Storage, hard reset, or updating the operating system. Otherwise you will no longer be able to access the encrypted files on the storage card. Use ActiveSync or Windows Mobile Device Center to transfer files between your storage card and computer. After the procedure, copy your files back to the storage card.

## 13.8 Managing Memory

### To see the available device memory

1. Tap **Start** > **Settings**, and then tap **All Settings**.
2. On the **System** tab, tap **Memory** > **Main** tab. The amount of memory allocated to data storage versus program storage is displayed, as well as the amount of memory in use versus the available memory.

### To see the available storage card space

1. Tap **Start** > **Settings**, and then tap **All Settings**.
2. On the **System** tab, tap **Memory** > **Storage Card** tab.

## 13.9 Resetting Your Device

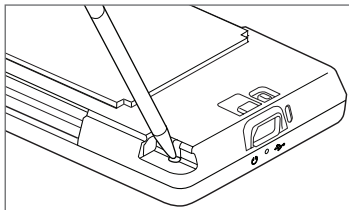
### Performing a soft reset

Perform a soft (normal) reset to clear all active program memory and shut down all active programs. This is useful when your device is running slower than normal, or a program is not performing properly. If a soft reset is performed when programs are running, unsaved work is lost.

### To perform a soft reset

1. Pull out the stylus, then remove the back cover.
2. Use the stylus tip to press the RESET button (red) located at the opening of the stylus bay.

Your device restarts and displays the Home screen.



## Performing a hard reset

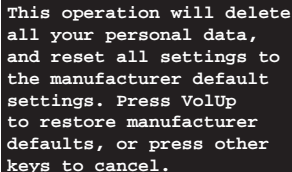
If a normal reset does not solve a system problem, you can perform a hard (full) reset. After a hard reset, the device is restored to its default settings—the way it was when you first purchased it and turned it on. You will lose any programs you installed, data you entered, and settings you customized on your device, and only Windows Mobile® software and other pre-installed programs will remain.

**Warning!** Your device will be set back to factory default settings. Make sure that any additional installed programs and/or user data have been backed up before you perform a hard reset.

**Important** If **Encrypt files when placed on a storage card** is enabled, backup all files from the storage card **before** using Clear Storage, hard reset, or updating the operating system. Otherwise you will no longer be able to access the encrypted files on the storage card. Use ActiveSync or Windows Mobile Device Center to transfer files between your storage card and computer. After the procedure, copy your files back to the storage card.

### To perform a hard reset

1. With the device turned off, press and hold the VOLUME UP and VOLUME DOWN buttons, then briefly press the POWER button.
2. Continue pressing the VOLUME UP and VOLUME DOWN buttons until you see this message on the screen:



```
This operation will delete
all your personal data,
and reset all settings to
the manufacturer default
settings. Press VolUp
to restore manufacturer
defaults, or press other
keys to cancel.
```

3. Release the VOLUME UP and VOLUME DOWN buttons.
4. Press the VOLUME UP button to perform the hard reset, or press any other button to cancel the reset.



## Using Clear Storage

If you can access the device settings, you can use Clear Storage to reset your device back to factory default settings.

1. Tap **Start > Settings**, and then tap **All Settings**.
2. On the **System** tab, tap **Clear Storage**.
3. Enter “1234” and then tap **Yes**.

## 13.10 Windows Update

Update Windows Mobile® with the latest security patches and fixes from Microsoft, if these are available.

### To set up Windows Update

The first time you run Windows Update, you need to set up how you want Windows Update to check for updates.

1. Tap **Start > Settings**, and then tap **All Settings**.
2. On the **System** tab, tap **Windows Update**.
3. On the Update Setup screen, tap **Next**.
4. Choose how you want to check for updates, then tap **Next**.

**Note** If you select **Automatic**, you are asked if you want to use your current data plan to check for updates. Select or clear the **Use my data plan to check for and download updates** check box, and tap **Next**.

5. Tap **Finish**.

### To check for updates

1. Tap **Start > Settings**, and then tap **All Settings**.
2. On the **System** tab, tap **Windows Update**.
3. Tap **Check Now**.

### To change Windows Update options

1. Tap **Start > Settings**, and then tap **All Settings**.
2. On the **System** tab, tap **Windows Update**.
3. Tap **Menu > Connections** to change how the device connects to the Internet when checking for updates, or tap **Menu > Change Schedule** to change how Windows Update checks for Windows Mobile® updates.

# Appendix

---

## A.1 Regulatory Notices

### Regulatory Agency Identifications

For regulatory identification purposes, your product is assigned a model number of TOPA100.

To ensure continued reliable and safe operation of your device, use only the accessories listed below with your TOPA100.

The Battery Pack has been assigned a model number of TOPA160.

**Note** This product is intended for use with a certified Class 2 Limited Power Source, rated 5 Volts DC, maximum 1 Amp power supply unit.

### Federal Communications Commission Notice

This device complies with part 15 of the FCC Rules. Operation is subject to the following two conditions: (1) This device may not cause harmful interference, and (2) this device must accept any interference received, including interference that may cause undesired operation.

This equipment has been tested and found to comply with the limits for a Class B digital device, pursuant to Part 15 of the FCC Rules. These limits are designed to provide reasonable protection against harmful interference in a residential installation.

This equipment generates, uses, and can radiate radio frequency energy and, if not installed and used in accordance with Appendix 247 the instructions, may cause harmful interference to radio communications. However, there is no guarantee that interference will not occur in a particular installation. If this equipment does cause harmful interference to radio or TV reception, which can be determined by turning the equipment on and off, the user is encouraged to try to correct the interference by one or more of the following measures:

- Reorient or relocate the receiving antenna.
- Increase the separation between the equipment and receiver.
- Connect the equipment into an outlet on a circuit different from that to which the receiver is connected.
- Consult the dealer or an experienced radio or television technician for help.

## **Modifications**

The FCC requires the user to be notified that any changes or modifications made to the device that are not expressly approved by High Tech Computer Corporation may void the user's authority to operate the equipment.

## **Safety Precautions for RF Exposure**

Use only original manufacturer-approved accessories, or accessories that do not contain any metal.

Use of non-original manufacturer-approved accessories may violate your local RF exposure guidelines and should be avoided.

## **Exposure to Radio Frequency (RF) Signals**

Your device contains a radio transmitter and receiver. The radiated output power is far below the international radio frequency exposure limits. These limits are part of comprehensive guidelines and establish permitted levels of RF energy for the general population. The guidelines are based on the safety standards previously set by international standards bodies:

- American National Standards Institute (ANSI) IEEE. C95.1-1992
- National Council on Radiation Protection and Measurement (NCRP). Report 86. 1986
- International Commission on Non-Ionizing Radiation Protection (ICNIRP) 1996
- Ministry of Health (Canada), Safety Code 6. The standards include a substantial safety margin designed to assure the safety of all persons, regardless of age and health.

The exposure standard for wireless mobile phones employs a unit of measurement known as the Specific Absorption Rate, or SAR. The standard incorporates a substantial margin of safety to give additional protection for the public and to account for any variations in usage.

As with other mobile radio transmitting equipment, users are advised that for satisfactory operation of the equipment and for the safety of personnel, it is recommended that no part of the human body be allowed to come too close to the antenna during operation of the equipment.

Your device has an internal antenna. Use only the supplied integral antenna. Use of unauthorized or modified antennas may impair call quality and damage the phone, causing loss of performance and SAR levels exceeding the recommended limits as well as result in non-compliance with local regulatory requirements in your country.

To assure optimal phone performance and ensure human exposure to RF energy is within the guidelines set forth in the relevant standards; always use your device only in its normal-use position. Do not touch or hold the antenna area unnecessarily when placing or receiving a phone call. Contact with the antenna area may impair call quality and cause your device to operate at a higher power level than needed. Avoiding contact with the antenna area when the phone is IN USE optimizes the antenna performance and the battery life.

Body-worn measurements were tested for typical body-worn operations with the back of the device kept 1.5 cm from the body.

## **SAR Information**

1.27 w/kg @10g (Head)

1.24 w/kg @10g (Body)

## **Telecommunications & Internet Association (TIA)**

### **Safety Information**

#### **Pacemakers**

The Health Industry Manufacturers Association recommends that a minimum separation of six inches be maintained between a handheld wireless phone and a pacemaker to avoid potential interference with the pacemaker. These recommendations are consistent with the independent research by and recommendations of Wireless Technology Research. Persons with pacemakers:

- Should ALWAYS keep the phone more than six inches from their pacemaker when the phone is turned ON.
- Should not carry the phone in a breast pocket.
- Should use the ear opposite the pacemaker to minimize the potential for interference. If you have any reason to suspect that interference is taking place, turn the phone OFF immediately.

#### **Hearing Aids**

Some digital wireless phones may interfere with some hearing aids. In the event of such interference, you may want to consult your service provider, or call the customer service line to discuss alternatives.

#### **Other Medical Devices**

If you use any other personal medical device, consult the manufacturer of your device to determine if they are adequately shielded from external RF energy. Your physician may be able to assist you in obtaining this information.

Turn the phone OFF in health care facilities when any regulations posted in these areas instruct you to do so. Hospitals or health care facilities may be using equipment that could be sensitive to external RF energy.

## WEEE Notice

The Directive on Waste Electrical and Electronic Equipment (WEEE), which entered into force as European law on 13th February 2003, resulted in a major change in the treatment of electrical equipment at end-of-life.

The purpose of this Directive is, as a first priority, the prevention of WEEE, and in addition, to promote the reuse, recycling and other forms of recovery of such wastes so as to reduce disposal.



The WEEE logo (shown at the left) on the product or on its box indicates that this product must not be disposed of or dumped with your other household waste. You are liable to dispose of all your electronic or electrical waste equipment by relocating over to the specified collection point for recycling of such hazardous waste. Isolated collection and proper recovery of your electronic and electrical waste equipment at the time of disposal will allow us to help conserving natural resources. Moreover, proper recycling of the electronic and electrical waste equipment will ensure safety of human health and environment. For more information about electronic and electrical waste equipment disposal, recovery, and collection points, please contact your local city center, household waste disposal service, shop from where you purchased the equipment, or manufacturer of the equipment.

## RoHS Compliance

This product is in compliance with Directive 2002/95/EC of the European Parliament and of the Council of 27 January 2003, on the restriction of the use of certain hazardous substances in electrical and electronic equipment (RoHS) and its amendments.

## A.2 Specifications

<b>Processor</b>	Qualcomm® MSM7200A™, 528 MHz
<b>Operating System</b>	Windows Mobile® 6.1 Professional
<b>Memory</b>	ROM: 512 MB RAM: 288 MB
<b>Dimensions (LxWxT)</b>	107.85 X 53.1 X 13.7 mm (4.25 X 2.09 X 0.54 inches)
<b>Weight</b>	117.5 grams (4.15 ounces) with battery
<b>Display</b>	3.2-inch TFT-LCD flat touch-sensitive screen with 480 X 800 WVGA resolution
<b>Network</b>	HSPA/WCDMA <ul style="list-style-type: none"> <li>• 900/2100 MHz</li> <li>• Up to 2 Mbps up-link and 7.2 Mbps down-link speeds</li> </ul> Quad-band GSM/GPRS/EDGE <ul style="list-style-type: none"> <li>• 850/900/1800/1900 MHz</li> </ul> (Band frequency, HSPA availability, and data speed are operator dependent.)
<b>Device Control</b>	<ul style="list-style-type: none"> <li>• TouchFLO™ 3D</li> <li>• Zoom bar</li> </ul>
<b>GPS</b>	Internal GPS antenna
<b>Connectivity</b>	<ul style="list-style-type: none"> <li>• Bluetooth® 2.0 with Enhanced Data Rate and A2DP for wireless stereo headsets</li> <li>• Wi-Fi®: IEEE 802.11b/g</li> <li>• HTC ExtUSB™ (11-pin mini-USB 2.0 and audio jack in one)</li> </ul>
<b>Camera</b>	Main camera: 5.0 megapixel color camera with auto focus Second camera: VGA CMOS color camera
<b>Audio supported formats</b>	AAC, AAC+, eAAC+, AMR-NB, AMR-WB, QCP, MP3, WMA, WAV, MIDI, M4A
<b>Video supported formats</b>	WMV, ASF, MP4, 3GP, 3G2, M4V, AVI



---

<b>Battery</b>	<ul style="list-style-type: none"><li>• Rechargeable Lithium-ion battery</li><li>• Capacity: 1100 mAh</li><li>• Talk time: Up to 300 minutes for WCDMA Up to 340 minutes for GSM</li><li>• Standby time: Up to 500 hours for WCDMA Up to 360 hours for GSM</li><li>• Video call time: Up to 150 minutes</li></ul> <p>(The above are subject to network and phone usage.)</p>
<b>Expansion Slot</b>	microSD™ memory card (SD 2.0 compatible)
<b>AC Adapter</b>	Voltage range/frequency: 100 - 240V AC, 50/60 Hz DC output: 5V and 1A
<b>Special Features</b>	FM Radio, G-Sensor

---



# Index

## A

- A2DP 161
- ActiveSync
  - ActiveSync mode 40
  - set up 99
  - synchronize with computer 100
  - synchronize with Exchange Server 125
- Add and remove programs 195
- Airplane Mode 53, 215
- Album
  - about 182
  - close Album 185
  - play back video 185
  - view an image 183
- Attachment
  - add to e-mail 118
  - download 120
  - set IMAP4 to automatically receive attachments 123
  - set Outlook to automatically receive attachments 123
- Audio Booster 193
- Auto Volume Control 208

## B

- Back cover
  - remove 25
- Backlight
  - set backlight timeout 211

Basic settings 211

## Battery

- battery information 26
- charge battery 28
- install 27
- remove 27
- save battery power 136

Beam via Bluetooth 162

## Bluetooth

- about 159
- Bluetooth Explorer 164
- Bluetooth file sharing 164
- Bluetooth shared folder 164
- hands-free headset 161
- modem 157
- modes 159
- partnership (pairing) 160
- stereo headset 161
- synchronize 102
- turn on and off 215
- visible 159

## C

- Call History 49
- Calling
  - from Phone screen 41
- Camera
  - about 173
  - Advanced Options 179

## 232 Index

- capture modes 173
- icons 176
- Menu Panel 177
- zooming 178

Car kit phones 54

Clear Storage 221

Clock & Alarms 208

Comm Manager 210, 214

Company Directory 132

Conference call 47

Configure data connection settings 29, 214

Connect device to Internet

- Dial-up 136
- start a connection 137
- ways of connecting 133

Connection Setup 29, 32, 214

Contacts 196

Contacts Picture capture mode 174

Copy

- contacts to SIM card 203
- copy and manage files 205
- media files from PC to device 187
- SIM contacts to device 202

## D

Device name 212

Dial-up 136

Direct Push 127, 215

Disconnect data connection 215

Disk Drive mode 40

Download

- download complete e-mail 119
- e-mail download settings 117, 122
- file attachments 120

- Java applications 200
- location data 171
- synchronize e-mails 122
- web feeds 151

## E

E-mail

- Internet e-mail account (POP3/IMAP4) 115
- mail server settings 116
- Mail tab (Home screen) 69
- settings (POP3/IMAP4) 117
- synchronize 95, 122, 125
- types of e-mail accounts 114

Emergency call 44

Emoticon

- MMS 112
- Windows Live Messenger 150

Entering Information 87

Excel Mobile 201

Exchange Server 125

## F

Favorite contacts 60

File Explorer 206

Find contact

- Company Directory 132
- on device 198

Finger gestures 38

Finger panning 39

Finger scrolling 38

FM Radio 190

Focus

- auto-focus 174

Forward e-mail 120  
Full QWERTY 88

## G

G-Sensor 209  
Google Maps 167  
GPS 169, 171

## H

Hard reset 220  
Home screen 30, 55

## I

IMAP4 115  
Input methods  
- Full QWERTY 88  
- Phone Keypad 90  
Input Panel 87  
Input Selector arrow 87  
International call 44  
Internet 133  
Internet e-mail 115  
Internet Sharing 156  
Internet tab (Home screen) 74

## J

JBlend 199  
- install MIDlets/MIDlet suites from device 200  
- install MIDlets/MIDlet suites from Internet 200  
- manage MIDlets/MIDlet suites 200  
- update a MIDlet/MIDlet suite 200

## L

Library  
- Music tab (Home screen) 81  
Live Messenger 150

## M

Mail tab (Home screen) 69  
Meeting request 131  
Memory 36, 219, 230  
Messages tab (Home screen) 69  
Messaging  
- about 105  
- e-mail 114  
- multimedia (MMS) 109  
- text (SMS) 106  
Messenger 150  
microSD card  
- install 27  
Microsoft Office Mobile 201  
MMS  
- about 109  
- add audio clip 112  
- add photo/video 111  
- add text 112  
- blacklist 114  
- create MMS message 110  
- MMS settings 109  
- reply message 113  
- view message 113  
MMS Video capture mode 174  
Modem  
- Bluetooth 157  
- USB 157

MP3 Trimmer 194  
Multimedia 109, 173  
Music tab (Home screen) 80

## N

News channels (web feeds) 151  
Now Playing  
- Music tab (Home screen) 80, 81

## O

Office Mobile 201  
OneNote Mobile 201  
Opera Mobile 138

## P

Panorama capture mode 174  
Password 217  
People tab (Home screen) 60  
Phone Keypad 90  
Phone services 213  
Photo capture mode 173  
Picture Theme capture mode 174  
PIN 217  
Playlists  
- Music tab (Home screen) 82  
- Windows Media Player Mobile 189  
Play media 186  
Play music  
- Music tab (Home screen) 81  
- Windows Media Player Mobile 186  
Podcasts 155  
POP3 115  
PowerPoint Mobile 201

## Q

QuickGPS 171  
Quick menu 36, 216

## R

Record  
- voice recording 203  
Regional Settings 209  
Regulatory notices 223  
Reply  
- e-mail 120  
- MMS 113  
- text (SMS) 107  
Reset  
- clear storage 221  
- hard reset 219  
- soft reset 219  
Review screen (Camera) 176  
Ring tone 212  
Ring type 212  
RSS Hub  
- about 151  
- headline list 154  
- news channels 151  
- podcasts 155  
- summary view 155

## S

Safety information 5  
Screen text size 211  
Send  
- MMS message 110  
- text message (SMS) 106

- Settings (Connections tab)
  - Advanced Network 210
  - Beam 210
  - Bluetooth 210
  - Connections 136, 210
  - Connection Setup 210, 214
  - Domain Enroll 210
  - USB to PC 102, 210
  - Wi-Fi 210
  - Wireless LAN 135
- Settings (Personal tab)
  - Buttons 207
  - Input 207
  - Lock 207, 217
  - Menus 207
  - Owner Information 207
  - Phone 207, 212, 213
  - Sounds & Notifications 207, 213
  - Today 207
- Settings (System tab)
  - About 208, 212
  - Certificates 208
  - Clear Storage 208, 221
  - Clock & Alarms 208
  - Customer Feedback 208
  - Device Information 208
  - Encryption 208, 218
  - Error Reporting 208
  - External GPS 208
  - Managed Programs 209
  - Memory 209
  - Power 209
  - Regional Settings 209
  - Remove Programs 196, 209
  - Screen 209, 211
  - Task Manager 209, 216
  - TouchFLO 209
  - Windows Update 209, 221
- Settings tab (Home screen) 85
- SIM card
  - install 25
  - PIN 217
  - remove 26
- SIM Manager
  - about 202
  - copy contacts to SIM card 203
  - copy SIM contacts to device 202
  - create SIM contact 202
- Sleep mode 29
- Smart Dial 41
- SMS 69, 106
- Soft reset 219
- Sounds & Notifications 207, 213
- Speakerphone 48
- Specifications 230
- Speed Dial 50
- Start screen
  - add a program icon 35
  - launch a program 35
  - open 34
  - remove or replace an icon 35
- Status icons 32
- Stock
  - quote 76
- Stock tab (Home screen) 76
- Storage card
  - encrypt 218
  - install 27

Streaming Media 146

Synchronize

- ActiveSync 100
- change information types 101
- music and videos 103
- via Bluetooth 102
- Windows Media Player 187
- Windows Mobile Device Center 96
- with computer 100
- with Exchange Server 125

## T

Task Manager 209, 216

Text messages

- copy to SIM card 108
- create new message 106
- Messages tab (Home screen) 69

Text size (screen) 211

Troubleshoot

- sync connection 102
- Windows Media Player Mobile 190

Turn device on and off 28

Turn phone function on and off 215

Turn the phone function on and off 53

## U

USB modem 157

USB to PC 102, 210

## V

Vibrate 32, 37

Video call

- about 50
- answer video call 53

- make video call 50

- settings 51

Video capture mode 173

Voice call

- about 41
- answer call 45
- end call 48

Voicemail 44

Voice Recorder 203

Volume

- adjust 37

## W

Weather tab (Home screen) 83

Wi-Fi 215

Windows Live 148

Windows Live Messenger 150

Windows Media Player Mobile

- file formats 186
- playlists 189
- troubleshoot 190

Windows Mobile Device Center 96

Windows Update 209, 221

Word Mobile 201

## Y

YouTube

- open 142
- Program Guide 143

## Z

Zooming

- Camera 178
- Opera Mobile 141