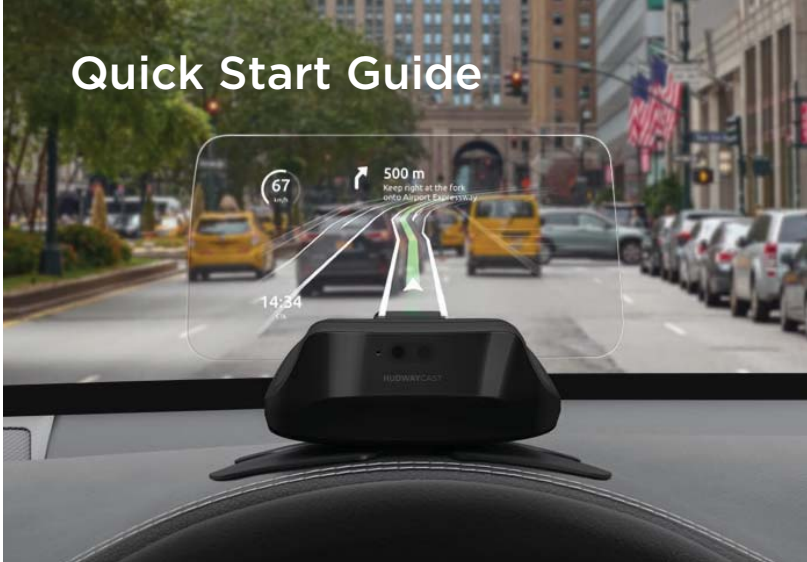


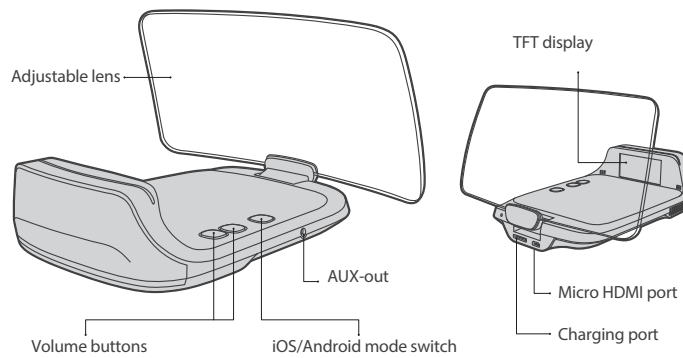
# Quick Start Guide



## Box contents



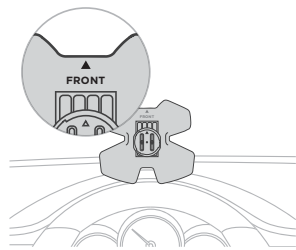
## Meet HUDWAY Cast



## Install it on your dashboard



Before removing the protective sheet from the base, open the lens and try looking through it. Make sure it doesn't block your view — it should be at the bottom of your line of sight.



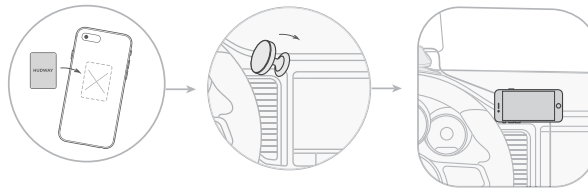
Peel off the protective layer, and stick the base to the dashboard.  
The arrow should face the windshield.



- Plug the charging cable in the device charging port.
- Put the device on top of the base and rotate it to fit in.
- Plug the charging cable in the cigarette lighter receptacle. The device will power on.

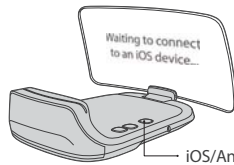
You can adjust the device angle by sliding the disc on the base. Use the hex key to fix the disc.

## Mount your phone



Apply the metal plate to the back of your phone or inside the case. Affix the magnet phone mount anywhere within comfortable reach. You can now quickly place the phone on the mount and take it off.

## Connect your phone to HUDWAY Cast



With HUDWAY Cast powered on, check its screen to see whether it prompts you to enable streaming from an iOS or an Android device.

Press the mode button to switch to correct device.

Streaming on iOS is made via AirPlay, on Android — using screen cast options. Learn more how to do it on your device at [hudwaycast.com/stream](http://hudwaycast.com/stream)

Anything on the phone screen can be streamed as is to HUDWAY Cast lens. But there's more: HUDWAY Cast app creates a game-changing experience — way beyond plain mirroring.

## All-new experience with HUDWAY Cast app



HUDWAY Cast app is designed to help you control basic smartphone functions in a driving-friendly way — whatever you're doing in the app, you will see your directions on the heads-up display.



App Store | Google play

Scan the code to download the app or use this link: <http://bit.ly/2wj2u4d>

**Attention:** Please review the Terms of Use on our website ([hudwaycast.com/terms](http://hudwaycast.com/terms)) prior to using this product. By using this product you certify that you have reviewed and accepted our Terms of Use.

**Additional information is provided at [hudwaycast.com](http://hudwaycast.com)**

HUDWAY LLC, 2017, CA 90292 USA. All right reserved. HUDWAY is a trademark of HUDWAY LLC registered in the U.S. Made in China.

**FCC Radiation Exposure Statement:**

This equipment complies with FCC radiation exposure limits set forth for an uncontrolled environment. This equipment should be installed and operated with minimum distance 20cm between the radiator & your body.

**FCC Warning**

This device complies with Part 15 of the FCC Rules. Operation is subject to the following two conditions:

(1) This device may not cause harmful interference, and (2) this device must accept any interference received, including interference that may cause undesired operation.

NOTE 1: This equipment has been tested and found to comply with the limits for a Class B digital device, pursuant to part 15 of the FCC Rules. These limits are designed to provide reasonable protection against harmful interference in a residential installation. This equipment generates, uses and can radiate radio frequency energy and, if not installed and used in accordance with the instructions, may cause harmful interference to radio communications. However, there is no guarantee that interference will not occur in a particular installation. If this equipment does cause harmful interference to radio or television reception, which can be determined by turning the equipment off and on, the user is encouraged to try to correct the interference by one or more of the following measures:

- Reorient or relocate the receiving antenna.
- Increase the separation between the equipment and receiver.
- Connect the equipment into an outlet on a circuit different from that to which the receiver is connected.
- Consult the dealer or an experienced radio/TV technician for help.

NOTE 2: Any changes or modifications to this unit not expressly approved by the party responsible for compliance could void the user's authority to operate the equipment.