
Remote Keyless Entry (HA-T001, HA-B001)

HYUNDAI AUTONET Co., Ltd.

San 136-1, Ami-ri, Bubal-eub, Ichon-si, Kyounki-do, 467-701, KOREA

– INDEX –

- An outline
- Description of Transmitter and BCM
- Block diagram from Transmitter and BCM
- Circuit diagram from Transmitter and BCM

An outline of Transmitter and BCM

1. How to use HA-T001, HA-B001

- HA-T001 & HA-B001 is Remote Keyless System.
- This unit controll door lock/unlock with wireless.
- This unit consist of Transmitter(HA-T001) and Receiver(HA-B001)
- Every press the button, door lock and unlock is repeated.

2. Introduction of Transmitter(HA-T001)

- Transmitter has one button
- Transmitter use the battery
- Frequency is 433.92MHz
- Modulation item is SAW Resonator
- Transmitter use Rolling code algorithm

3. Introduction of BCM(HA-B001)

- Receiver control car door
- Receiver has RF module(433.92MHz)
- RF module use super-heterodyne circuit
- Receiver control door relay ,hazard relay
- Receiver has eeprom that save code

4. Regulatory Information

- THIS DEVICE COMPLIES WITH PART 15 OF THE FCC RULES
- Operation is subject to the following two conditions;
 - (1) this device may not cause harmful interface, and
 - (2) this device must accept any interference received, including interference that may cause undesired operation.

CAUTION: Changes and modifications not expressly approved by the party responsible for compliance could void the user's authority to operate the equipment

Description of Transmitter and BCM

1. PRIMARY FUNCTION

- Remote door lock/unlock
- LED turn on (When button is pushed)
- Operating distance : 30 m over
- Id input(setting mode)

2. ELECTRICAL CHARACTERISTICS

	TRANSMITTER	BCM
model name	HA-T001	HA-B001
Operating voltage	3 VDC	10 ~ 16 VDC
Consumption current	Max 10mA	
Operating frequency	433.92MHz	
Power	10mW under	-
Sensitivity	-	-117dBm(typical)
Operating temperature	-20 ~ +55 °C	-20 ~ +55 °C
ETC	AM modulation	Super-heterodyne

3. DESCRIPTION MODE

1) Mode

Mode	ID INPUT (Setting Mode)	Normal Mode
B+	ON	ON
KEYLESS	-	OFF
ACC	-	OFF
IG	-	OFF
SETTING	use equipment	OFF

2) Id input(Setting Mode)

When Setting Mode, once the button push,

A Picture of Transmitter

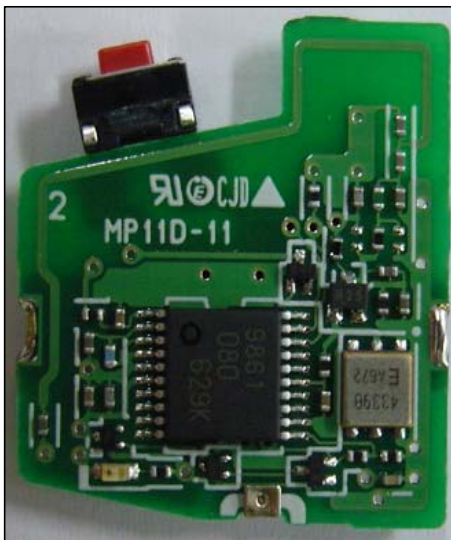
Product :



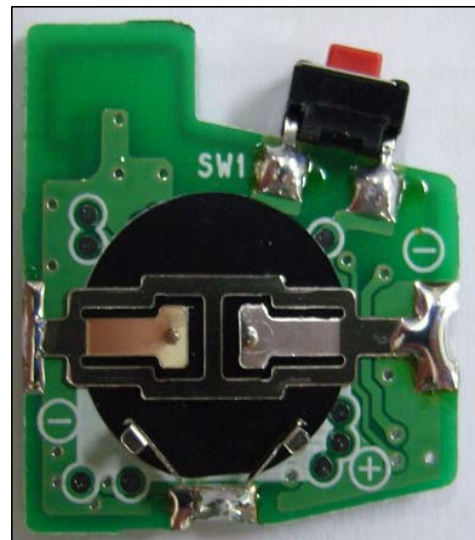
Front View



Bottom View



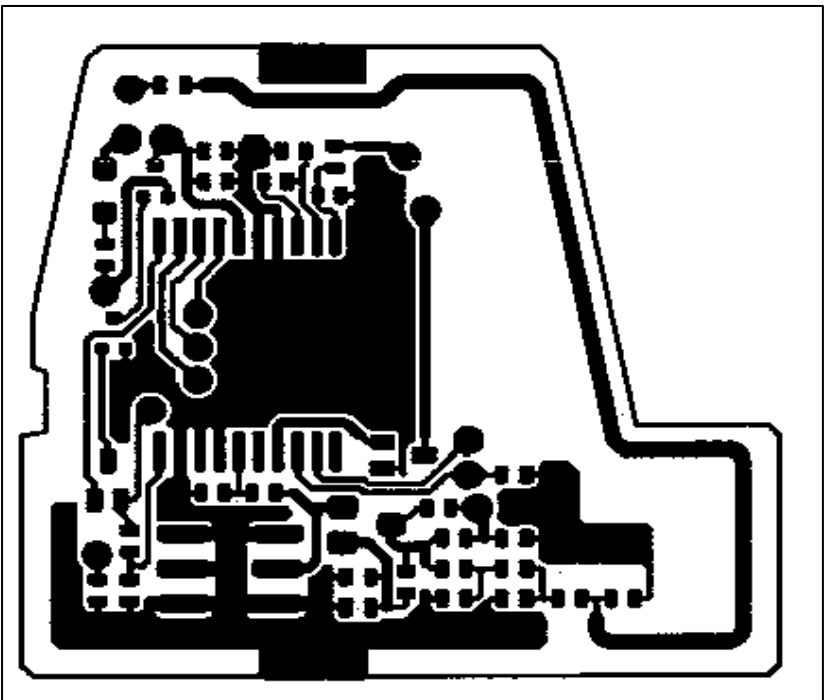
PCB Top View



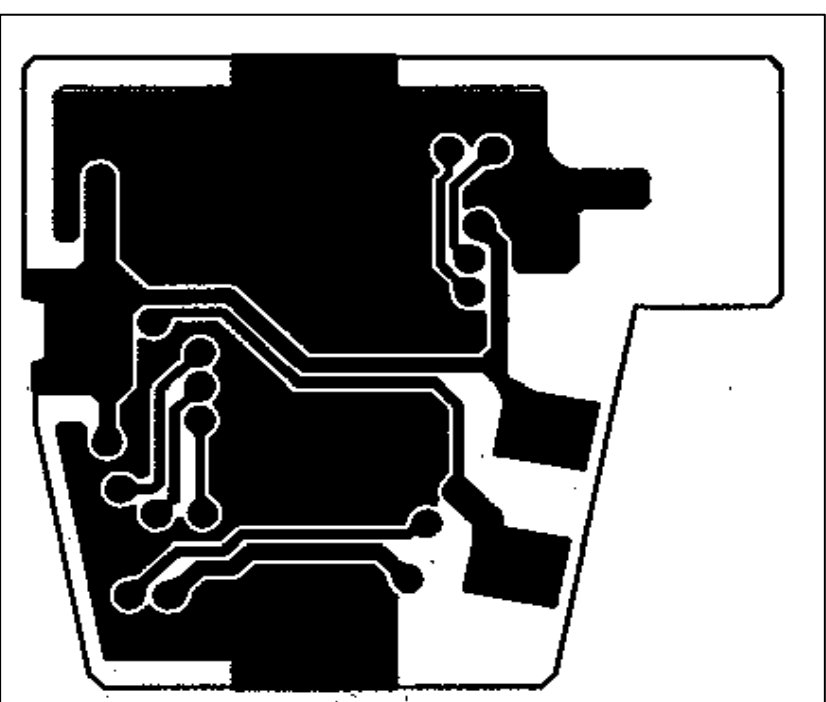
PCB Bottom View

PCB Pattern of a Transmitter

Product ;



TOP PATTERN



BOTTOM PATTERN