

# Haier



Tablet PC  
Bedienungsanleitung

<b>Specification</b>	<b>3G GPS Bluetooth Phone Call Wi-Fi 7 inch Tablet</b>
<b>Modle</b>	<b>PAD702</b>
<b>CPU</b>	MTK6572 Dual-core 1.0GHZ Cortex-A7
<b>GPU</b>	Mali400MP
<b>Operation</b>	Google Android 4.4 OS
<b>RAM</b>	DDR 512MB
<b>Storage Device</b>	Built-in 4GB memory
<b>Display Size</b>	7 inch
<b>Touch Panel</b>	Capacitive Touch Panel
<b>Sensor</b>	G-Sensor
<b>Resolution</b>	1024*600 (16:9)
<b>Camera</b>	0.3MP Front + 2.0 MP Back
<b>Battery type</b>	Battery Li-Polymer Rechargeable 3.7v 2000mah
<b>Speaker</b>	yes
<b>MIC</b>	yes
<b>WIFI</b>	IEEE 802.11 b/g/n network
<b>3G</b>	Built-in 3G: WCDMA 850/1900
<b>GPS</b>	YES
<b>I/O ports</b>	1*DC In
	1*Earphone
	1*TF card slot (4G~32G); 2* Sim card In
	1 * Micro USB2.0 (support usb host)
<b>Menu Lanuage</b>	English, French, Spanish, Portuguese, Chinese
<b>Accessories</b>	Gift box , Instruction Manual , Charger, Micro usb

# Content

Content.....	3
1 Introduction.....	4
1.1 Acknowledgement.....	4
1.2 Announcements.....	4
1.3 Safety Instruction.....	4
1.4 Abbreviation/Terminology.....	5
2 PAD Introduction.....	6
2.1 PAD Operation and Preparation.....	6
2.2 PAD Status and Reminder.....	6
3 Quick Start Guide.....	7
3.1 Keys Function.....	7
3.2 Startup and Shutdown.....	7
3.3 Open and Close of the Screen.....	7
3.4 Usage of Touch Screen.....	8
3.5 Home Page.....	9
3.6 Visit Application Procedures.....	12
3.7 USB Connection.....	12
3.8 Typing words.....	13
3.9 Operation Technique.....	15
4 Troubles Shooting.....	16
5 FCC Statement.....	17
6 FCC Statement.....	17

# 1 Introduction

## 1.1 Acknowledgement

Thanks for your purchase of our product. Pad 702 is high definition tablet PC. Its CPU is MT6572, which apply the Cortex-A7, dominant frequency is 1GHz, it is based on Android 4.4 operation system, and easy to expand the third application procedure.

The product is designed with various functions, including WCDMA, WIFI, BT, GPS,FM, voice call and so on. It is easy to achieve wireless communication and internet, you have access to surf the internet anytime and anywhere; it is also built with high accuracy GPS module, so that it can be used for navigating through installing map software. There are many sensors which offer you brand-new operation and entertainment; besides, it has camera shooting, which leads electronic consumption to enter into a fresh palm internet entertainment time.

The manual systemically introduces the functions, use techniques and announcements, please read this manual carefully before your operation.

## 1.2 Announcements

### Preventive maintainance

- Please always keep the PAD dry. To avoid the device short trouble, corrosion fault and electric short, please prevent the device, battery and charger from water and moisture, and don't operate the device or charger by wet hand.
- To avoid failure of device, battery and charger, please prevent the device, battery, charger from violent shock or shake.
- To avoid failure of device, battery and charger, please prevent the device, battery, charger of all over heating or too cold circumstance
- Never shock, throw, prod the Pad 702, or drop, extrude, bend the Pad 702.
- Never disassemble the device and accessories arbitrarily, otherwise the device and accessories are not in our company warranty scope.

## 1.3 Safety Instruction

Before the operation of the PAD, please read this chapter and teach your kids about these information. For further details, please refer to the safety instructions and announcement.

- Never use the PAD when driving car, in order to ensure safe driving.
- In the medical area, please abide by related rules and regulations. Please shut down the PAD when it is near to the medical area.
- To avoid the wireless signal to interrupt the plane- controlled signal, please shut down the PAD or using airplane mode when you are boarding a flight,
- To avoid electronic equipment failure, please shut down the PAD in the vicinage of high-accuracy electronic equipments.
- Please don't disassemble the PAD and accessories. Only authorized agent has access to service the PAD.
- Please keep the PAD far away from magnetic equipments, the radiation of PAD may erase the data stored in the magnetic equipments.
- Never use the PAD in the vicinage of high temperature, inflammable gas ( gas station).
- Protect the PAD and accessories from kids reach scope, and avoid the kids to use the PAD without parents' supervision.
- Please comply with related rules and regulations, and respect others' privacy and legal rights while using the PAD.
- Please strictly adhere to related instructions in the manual when using USB cable to ensure the safety of the PAD or PC.
- Never use the PAD in bathroom or other humid environment, and please protect the PAD from liquid wash or wet.

## 1.4 Abbreviation/Terminology

Abbreviation/Terminology	Full Name	Description
PAD	Mobile Internet Device	Mobile Internet Terminal
WIFI	Wireless Fidelity	Base on IEEE 802.11b standard wireless LAN
T F	TransFlash	Alternative name Micro SD,super miniature memory card

# 2 PAD Introduction

## 2.1 PAD Operation and Preparation

### Battery Charging











If this navigator is first used, please use AV adaptor to fully charge it.

1. Apply the power adaptor to charge for PAD.

## 2.2 PAD Status and Reminder

### Reminder icons

When some remind message appears in your reminder window, please click column and slip the screen to open the reminder list. Choose the menu you need, and confirm the information. Then you can close the reminder window through clicking the column to slide up. Please refer to below status icons:

	New email		Airplane Mode on
	USB connected		USB debugging connected
	Return button		Downloading
	Display recently-used application		Home button
	Current electric volume.		WIFI connected, internet is available

### Reminder board

Reminder icons will work while receiving emails, WIFI is open, you can open the reminder board to view the detailed information.





### Open the reminder board

When the reminder column shows new reminder icon, please hold the column and slip down your finger, then the reminder board is opened.

# 3 Quick Start Guide

## 3.1 Keys Function

### Keys Function Description:

Power button	Short press to sleep/wake up, long press to startup and shutdown.
Volume + (up)	increase the volume
Volume - (down)	decrease the volume
<b>HOME button</b> (home) 	Click it in any interface will return to main interface.
<b>Back button</b> (back) 	click it in any interface will return to previous menu
<b>Menu button</b> 	This button will display in menu interface.
<b>Setting button</b> 	display recently browsed history

## 3.2 Startup and Shutdown

### Startup

Long press **POWER key for three seconds**, you can enter into startup picture. The system enters into screen lock status, please unlock it.

### Shutdown

1. Long press POWER, it will popup shutdown window.
2. Shutdown window contains mute mode, airplane mode, reboot mode and shutdown four options.
3. Click Shutdown is the last step.

## 3.3 Open and Close of the Screen

**Screen will be closed on its own when no operation happens.**

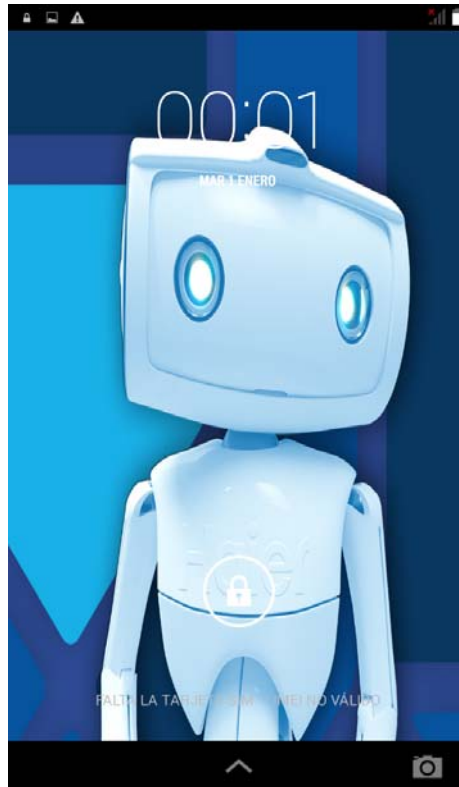
1. Screen will be closed on its own if no operation happens for some time to save battery

power

2. When screen is open, press POWER key, the screen will be closed immediately.

### **Open the screen when it is closed.**

If the screen is closed, short press POWER to open the screen. The screen will be locked open it, it will show the picture as below picture, left slide to unlock and enter into camera, right slide the unlock icon to unlock the screen.



**Picture 3.1**

## **3.4 Usage of Touch Screen**

### **PAD operating methods**

There are below methods to view the main screen, menu and application procedure in your PAD.

#### **Click**

When you want to use the screen keyboard typing or choose application in the main interface, you only need to touch it by your finger.

#### **Press on**

If you want to open some item( textbox or the link in the webpage), or shortcut and main procedure move, you can press on this item.

#### **Quickly slide or slide**

Quickly slide or slide indicates make quick vertical or horizontal movement by finger.



### **Pull**

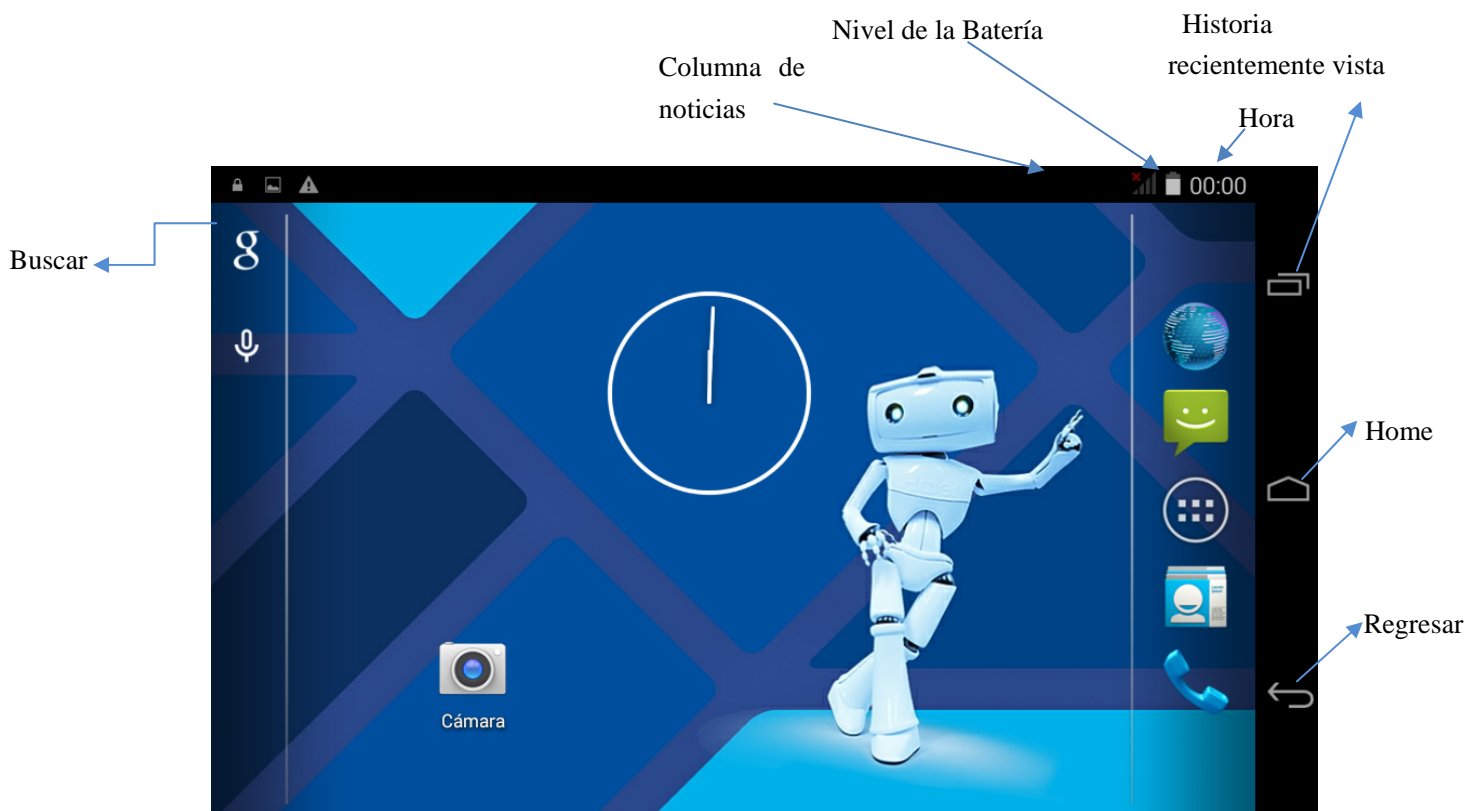
Before you pull, you need to hold the it with strength until you pull it into the position you want.

### **Rotate**

For most pictures, you only need to retate the PAD sidwise to change the screen direction from horizoncial to vertical. For instance, when you are typing wods, and watching movies.

## **3.5 Home Page**

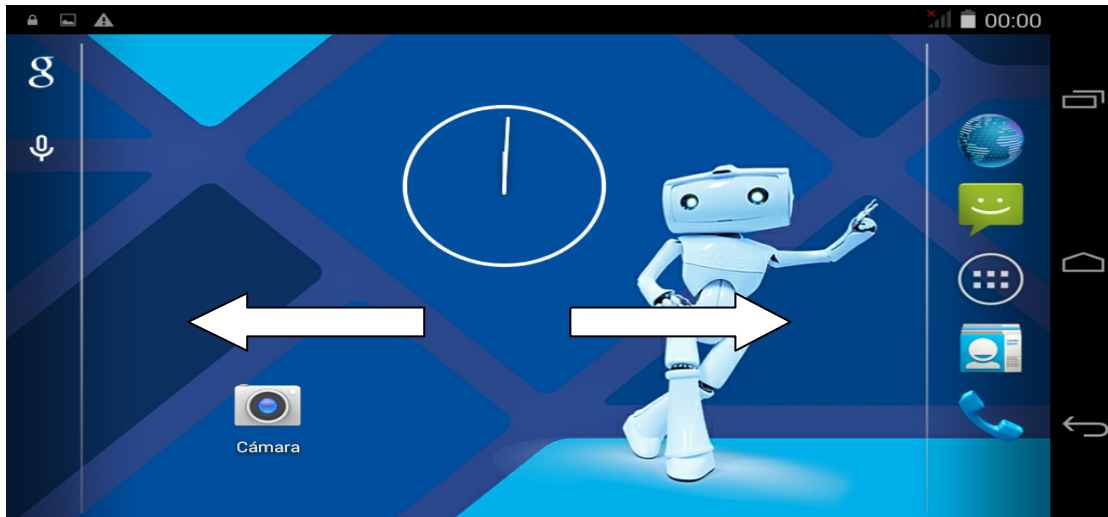
Main interface as below picture 3.2, long press the blank and it will popup windows to set wallpaper, folder, widgets, and shortcut.



**Figura 3.2**

### **The extended home page**

The home page can be extended beyond the wideness of screen to provide more space, which you can put new-added shortcuts and widgets. Click the blank space in home page then slide right or left to extend to the right or left of the screen. In the home page, there are two extended pictures, as Picture 3.3.



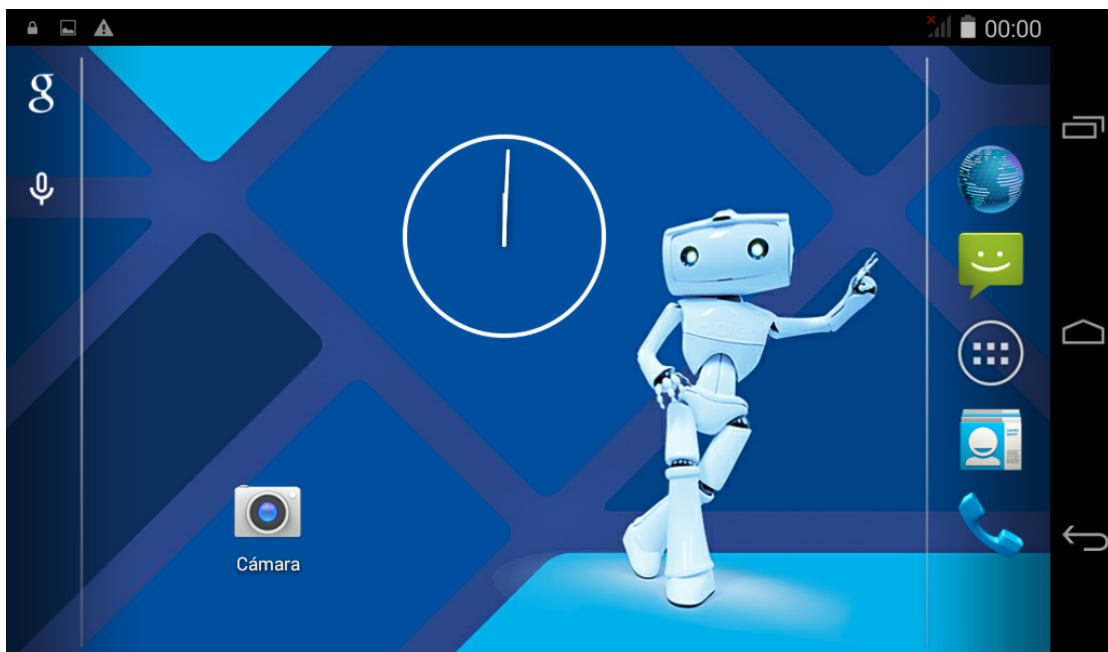
**Picture 3.3**

**The shortcut icons management in desktop application.**

**Create folder icon in desktop**

1. Drag the icons need to be put together on one icon(can also overlay several icons)as Picture 3.4.
2. Then click the overlaid icons, the applications can be folded, as Picture 3.5.

Click the unnamed folder in the black box, it will popup the hidden keyboard, the folder name can be renamed (this is similar with Apple IOS system), the icons position can be changed through long press.



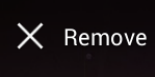
**Picture 3.4**



**Picture 3.5**

### **Remove the icons in desktop**

1. Long press the icons need to be remove, then on the right above of the screen, it


will appear  icons.

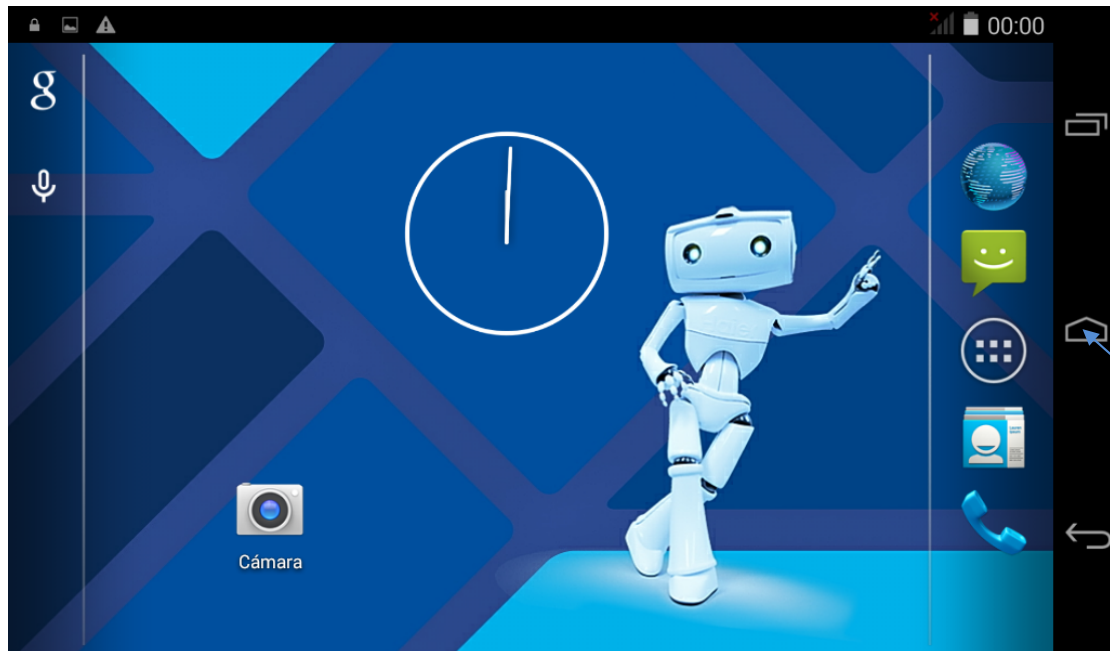
2. Drag the icon to the above of the remove icon, till the icon become red, then move your finger to delete the icon.

### **Change the wallpaper of desktop**

1. In home page, long press any blank space in main screen, it will popup a window to change the wallpaper.
2. Click the gallery or wallpaper gallery to select the wallpaper.

## 3.6 Visit Application Procedures

Click  in right top of Picture 3.2, enter into main interface as Picture 3.6, choose the application procedure you want to visit.



Picture 3.6

## 3.7 USB Connection

### PAD storage configuration

Before transmitting documents, you have to conduct storage configuration for your PAD:

1. Connect the PAD and computer by USB cable, the reminder column will show the remind information.
2. Open the reminder board; please view the PAD status and reminder to learn how to open the board.
3. In the reminder board, click the “USB Connected”, it will as below Picture 3.4, then click “open USB storage configuration”.
4. Now the USB is connected successfully.



Picture 3.7

### Copy the document into memory card

1. Connect the PAD to computer with USB cable.
2. As PAD storage configuration, it is connected with computer successfully.
3. Open the “My computer” in your computer, check the items in “removable disc”.
4. Copy the documents you need into “removable disc”.
5. After copying finishes, click “shutdown the USB storage configuration” to uninstall.

Notice: When the PAD is connected with USB cable, and you open the USB storage configuration, you can't view the memory card through the PAD. Only after you detach the USB cable, you can view the memory card in the PAD.

## 3.8 Typing words

### Use the screen keyboard

When you start the procedure or choose the words or numbers edition, it will show the screen keyboard. The keyboard contains below typing options:

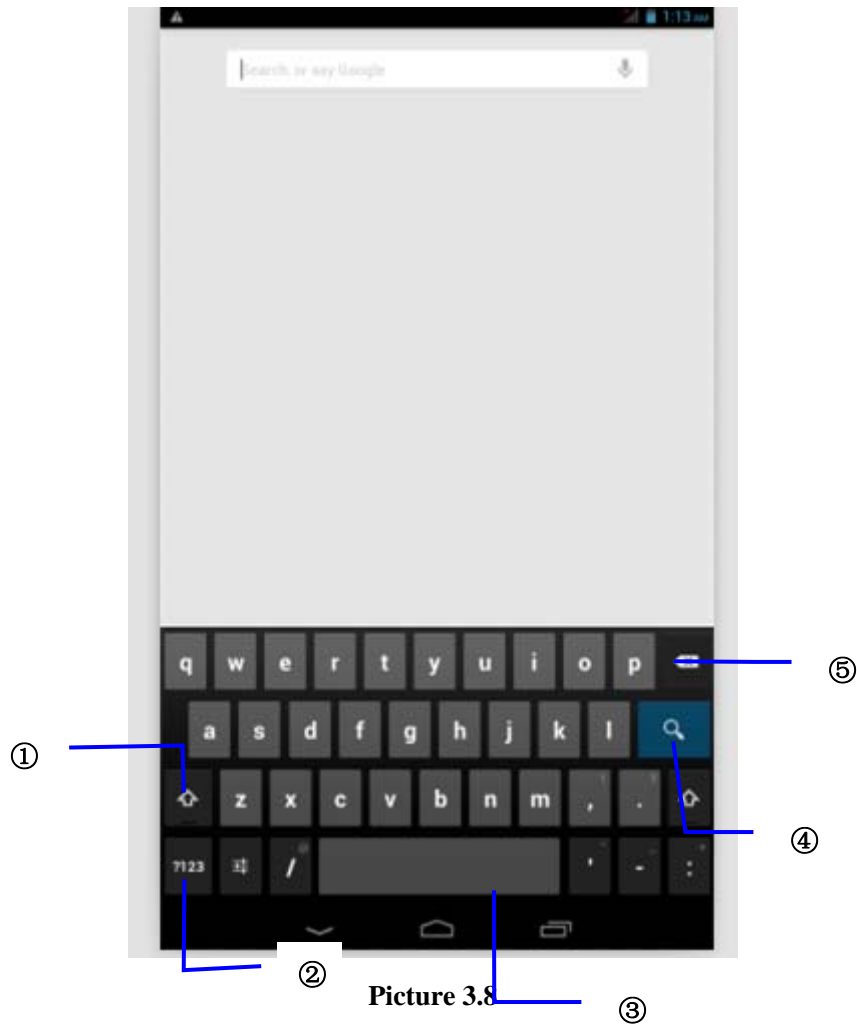
1. Android keyboard
2. Google Pinyin

### Choose the typing method you want

1. Click Setting pocedure application.
2. Click Language and Keyboard.

3. In the text setting area will reveal all the installed words-typing methods in your PAD.
4. Tick the typing method you want.

### Use and switch of input method



Picture 3.8

1	switch the capital and small letter
2	switch the mode of words input
3	click to insert the space
4	click input to execute
5	delete the character in the left of cursor, click and hold to delete all the characters in the left of the cursor.

## 3.9 Operation Technique

### **Enter widgets interface**

In the application interface, click widgets on the above of screen, or slide the screen, it will switch into widgets interface. Long press any widget to create its shortcut, then you can enter into the application through the shortcut icon.

### **Create application shortcut icons in the desktop**

In the application interface or widgets interface, long press any icon to switch into desktop automatically, drag and hold the icon, you can move to any position in the desktop.

Remind: If the target position has no space, the widget won't be add in the main screen.

# 4 Troubles Shooting

## 1. The first startup of PAD is slow

After the PAD system upgraded, the first startup need to install the pre-installed application softwares, the lead time is around 2-3 minutes, the startup afterwards will be much quicker.

## 2. PAD can't connect Wi-Fi

- Make sure the wireless router of internet service can work in normal.
- Ensure the PAD and wireless router in certain distance, and no wall or other barrier between them.
- Ensure the user name and password both correct.

## 3. PAD feels hot

When many application procedures are used in meanwhile, or the brightness of screen open to the lightest or under charging, PAD may feel fever. It is normal.

## 4. Email can't be set or Registration of application procedure.

- Ensure your internet is well connected.
- Make sure your email setting way is correct.
- Keep your system time and local time consistent.

## 5. The system is abnormal and can't work.

When you install some third party application procedure, it may cause abnormal work, you can press **Reset key**(next to power port) to reset the system.

## 6. The webpage can't be opened

- Please keep the distance between from route to PAD in effective range.
- Please restart WIFI and try again.

## 7. PAD works terribly slow sometimes

It is normal phenomenon. Please turn off some application you don't need in advanced task management, or uninstall some third party application to release more system resource.



## 5 FCC Statement

This equipment has been tested and found to comply with the limits for a Class B digital device, pursuant to part 15 of FCC Rules. These limits are designed to provide reasonable protection against harmful interference in a residential installation. This equipment generates and can radiate radio frequency energy and, if not installed and used in accordance with the instructions, may cause harmful interference to radio communications. However, there is no guarantee that interference will not occur in a particular installation. If this equipment does cause harmful interference to radio or television reception, which can be determined by turning the equipment off and on, the user is encouraged to try to correct the interference by one or more of the following measures:

- Reorient or relocate the receiving antenna.
- Increase the separation between the equipment and receiver.
- Connect the equipment into an outlet on a circuit different from that to which the receiver is connected.
- Consult the dealer or an experienced radio/TV technician for help.

This device complies with Part 15 of FCC Rules. Operation is subject to the following two conditions: (1) This device may not cause harmful interference, and (2) This device must accept any interference received, including interference that may cause undesired operation.

Note: The manufacturer is not responsible for any radio or TV interference caused by unauthorized modifications to this equipment. Such modifications could void the user's authority to operate this equipment.

Any Changes or modifications not expressly approved by the party responsible for compliance could void the user's authority to operate the equipment.

## 6 SAR Statement

This pad meets the government's requirements for exposure to radio waves. The guidelines are based on standards that were developed by independent scientific organizations through periodic and thorough evaluation of scientific studies. The standards include a substantial safety margin designed to assure the safety of all persons regardless of age or health.

FCC RF Exposure information and Statement the SAR limit of USA (FCC) is 1.6W/kg averaged over one gram of tissue. Device type 111(FCC ID: 2ACZDPAD702) has also been tested against this SAR limit. SAR information on this and other pad can be viewed on-line at <http://www.fcc.gov/oet/ea/fccid/>. This device was tested for typical body-worn operations with the back of the handset kept 0mm from the body. The use of belt clips, holsters and similar accessories should not contain metallic components in its assembly. The use of accessories that do not satisfy these requirements may not comply with FCC RF exposure requirements, and should be avoided

# Haier

## Haier Information Technology (Shenzhen) Co.,Ltd

Manufacturer address: Room B4 of Floor 21, No.3 Tower Building, Chinese Technology  
Research Park, China Technology Exploitation Institute; Gaoxin South first street No.009,  
Nanshan District, Shenzhen City, Guangdong Province.  
Postcode: 518057  
<http://www.haier.com>