

Multilinks Data Card Help

Welcome

Welcome to use Multilinks Data Card. With it, you can dial-up to the network, Send SMS, Call, Manage Contacts, and so on. This guide aims to introduce how to use Multilinks Data Card.

RF exposure information:

FCC RF Exposure requirements: The highest SAR value reported under this standard during product certification for use next to the body is 0.728 W/kg. This transmitter must not be collocated or operating in conjunction with any other antenna or transmitter. USB dongle transmitter is approved for use in typical laptop computers. To comply with FCC RF exposure requirements, it should not be used in other devices or certain laptop and tablet computer configurations where the USB connectors on the host computer are unable to provide or ensure the necessary operating configurations intended for the device and its users or bystanders to satisfy RF exposure compliance requirements.

This device complies with part 15 of the FCC rules. Operation is subject to the following two conditions: (1) this device may not cause harmful interference, and (2) this device must accept any interference received, including interference that may cause undesired operation.

NOTE: The manufacturer is not responsible for any radio or TV interference caused by unauthorized modifications to this equipment. Such modifications could void the user's authority to operate the equipment.

NOTE: This equipment has been tested and found to comply with the limits for a Class B digital device, pursuant to part 15 of the FCC Rules. These limits are designed to provide reasonable protection against harmful interference in a residential installation. This equipment generates uses and can radiate radio frequency energy and, if not installed and used in accordance with the instructions, may cause harmful interference to radio communications. However, there is no guarantee that interference will not occur in a particular installation. If this equipment does cause harmful interference to radio or television reception, which can be determined by turning the equipment off and on, the user is encouraged to try to correct the interference by one or more of the following measures:

- Reorient or relocate the receiving antenna.
- Increase the separation between the equipment and receiver.
- Connect the equipment into an outlet on a circuit different from that to which the receiver is connected.
- Consult the dealer or an experienced radio/TV technician for help

Install

This section will introduce how to install Multilinks Data Card. The content includes the following:

Install driver

Install and uninstall software

Install Data Card

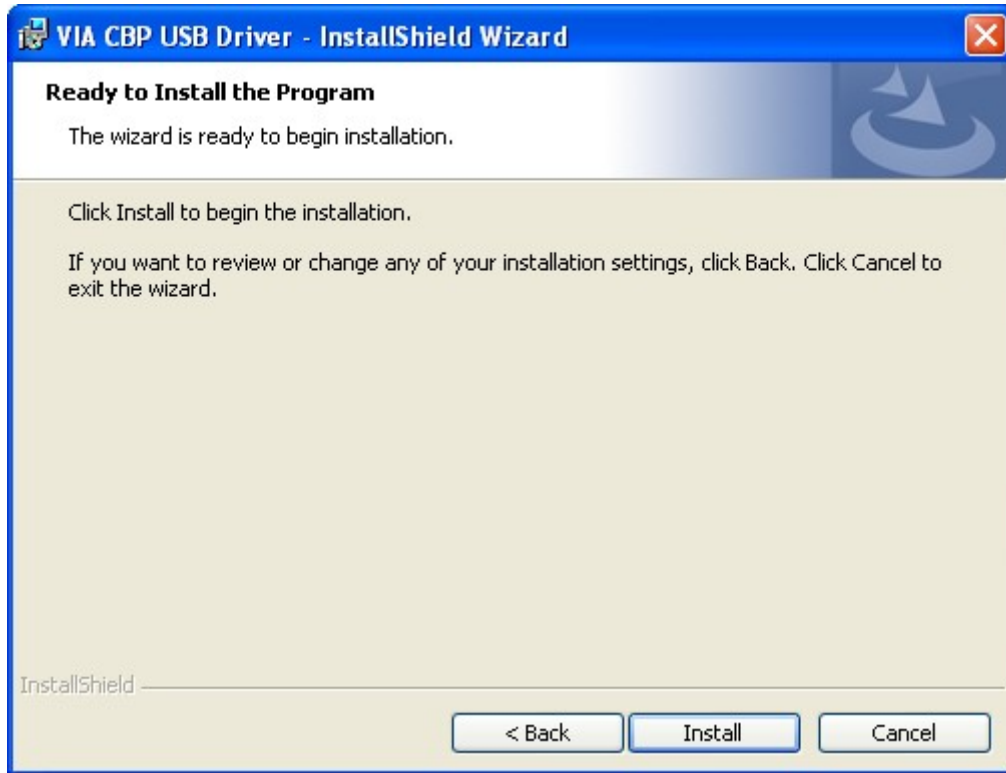
Install driver

It is recommended that you should firstly install this driver before run the Software or insert the data card into your computer. Please check the following operation under XP operation system.

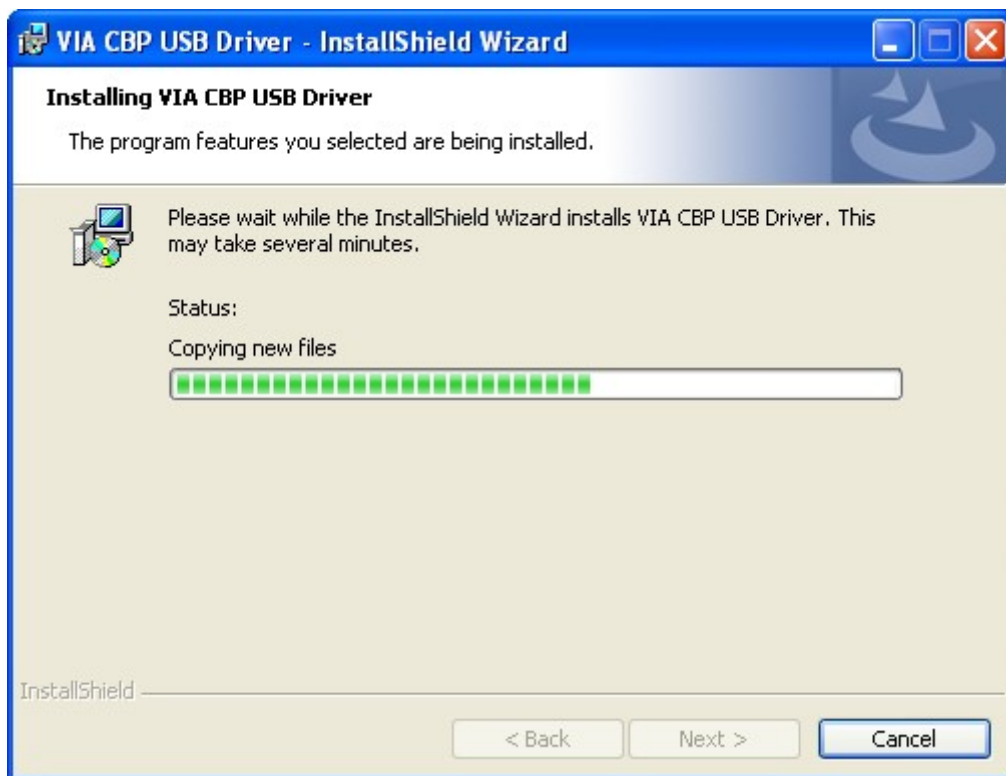
1. Run msi file under the directory "USB Data Card Driver".
2. Please click "Next" in driver installation interface.



3. Please click "Install" in this interface.

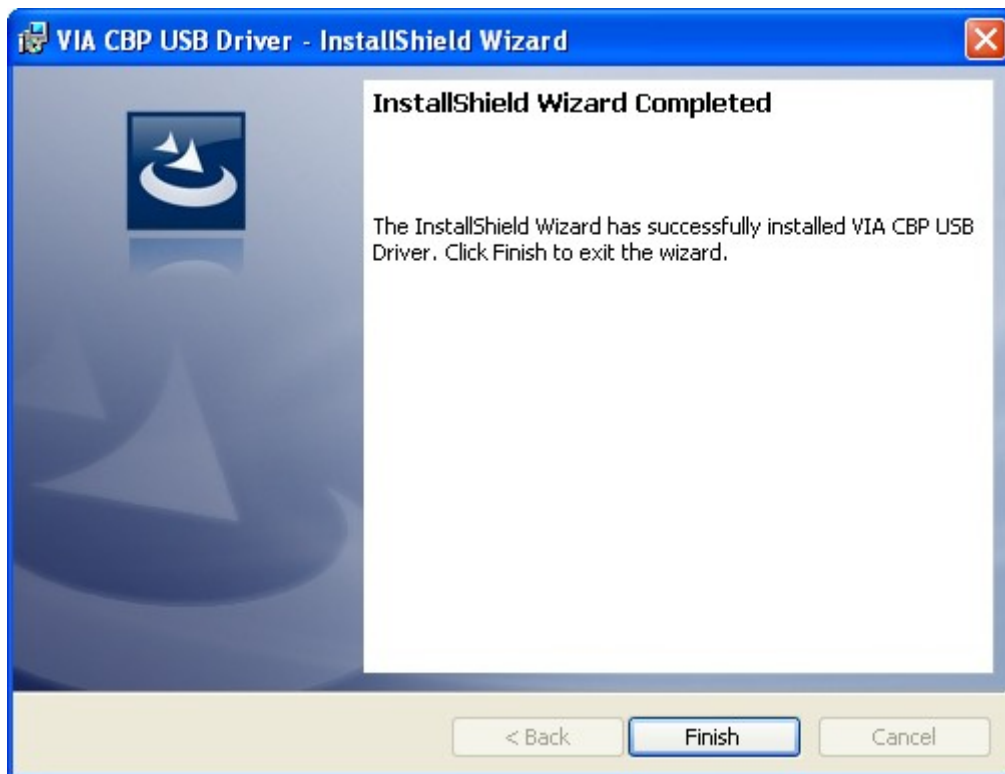


4. While waiting for the installation, install progress is also being displayed. When the driver is being installed, Operation System may show a message "Digital Signature Not Found" or "has not passed Windows Logo testing to verify its compatibility with this version of Windows", please select "Yes" or "Continue Anyway" to complete the installation.





5. Finish installation.



Install and uninstall software

Install software

The installation program of the software has been packaged as an executable file. Please check the following operation under XP operation system.

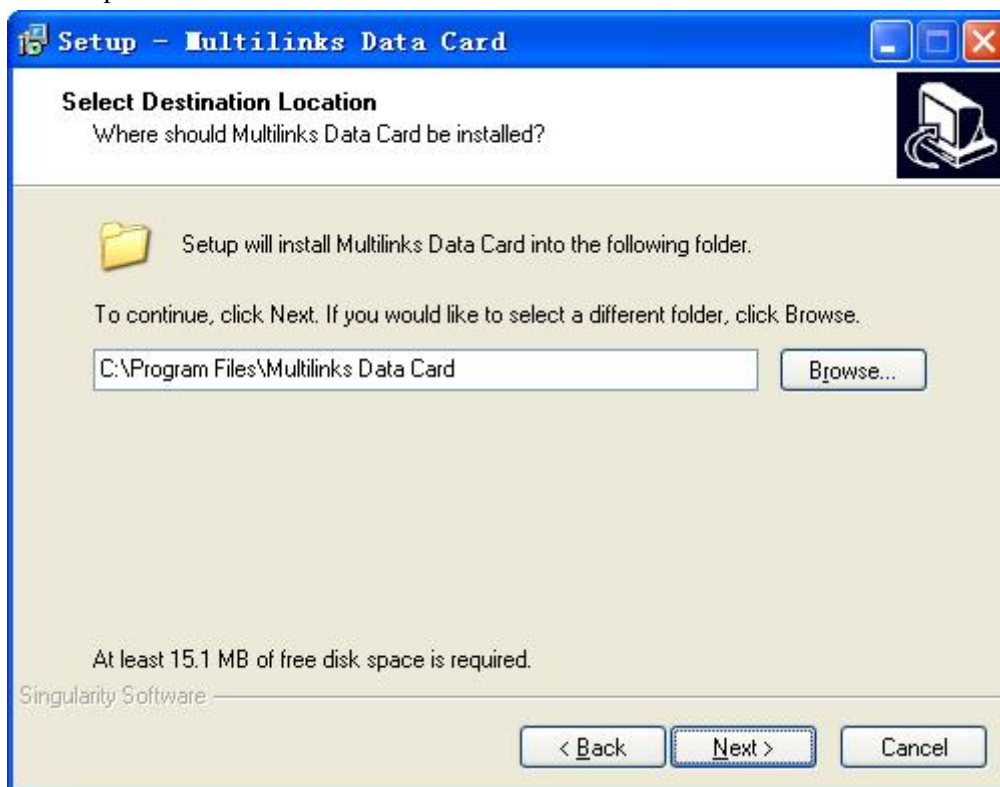
1. Run exe file under the directory "Data Card Soft".
2. Please select "Next" in Software Installation interface.



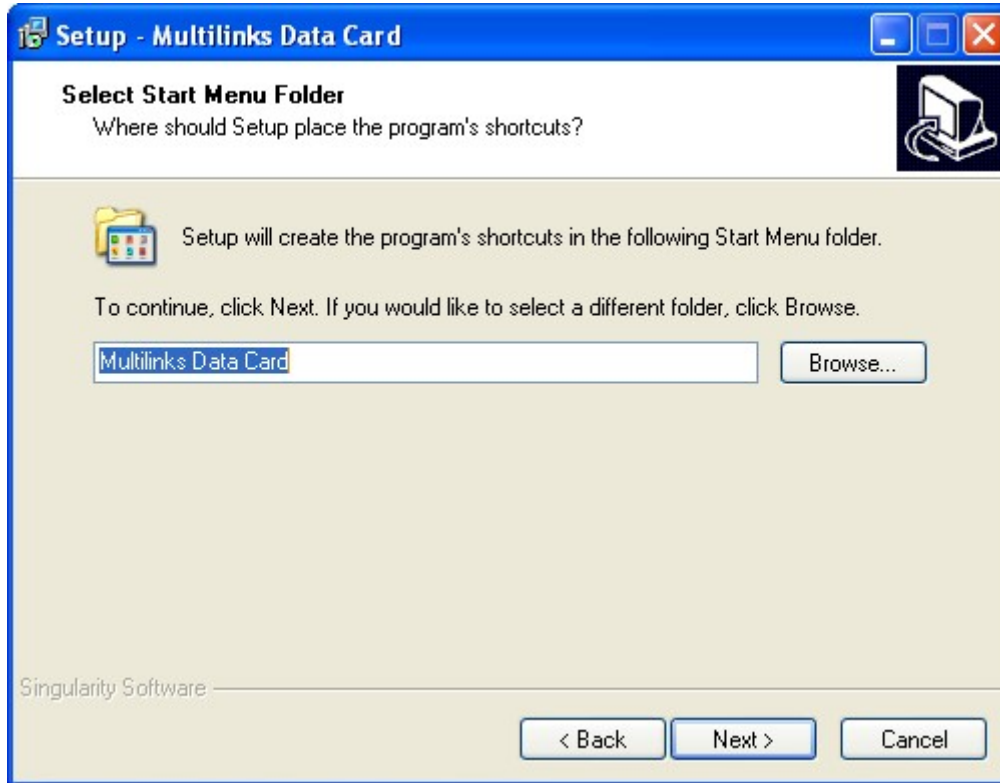
3. Please select "I accept the agreement" and "Next" in License interface.



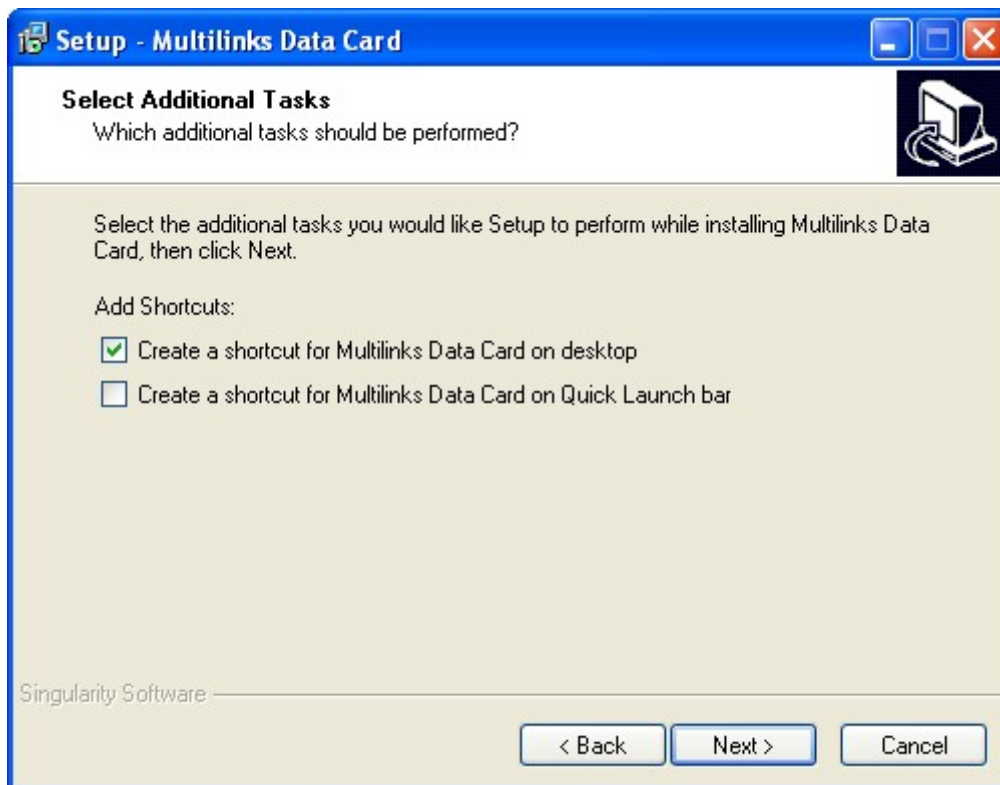
4. Select installation directory. In the interface, the mini necessary disk space for the software installation will be displayed, please select install directory according to your practical computer situation.



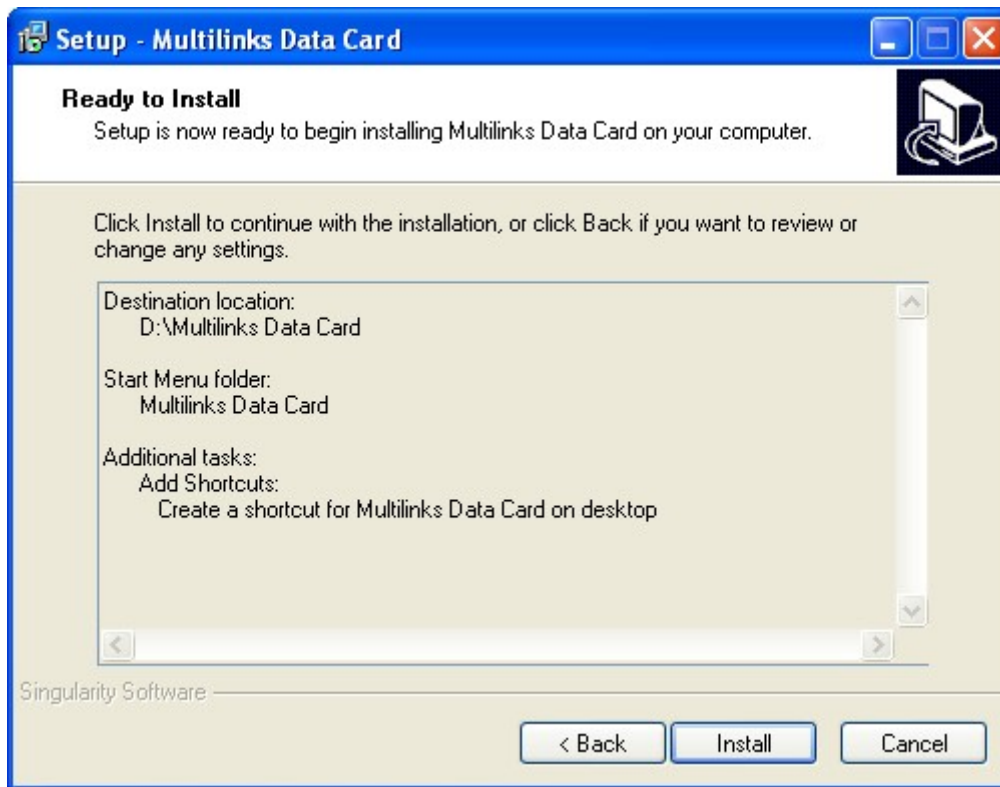
5. Select where its shortcut icon will be placed in "Start" menu. Click "Next".



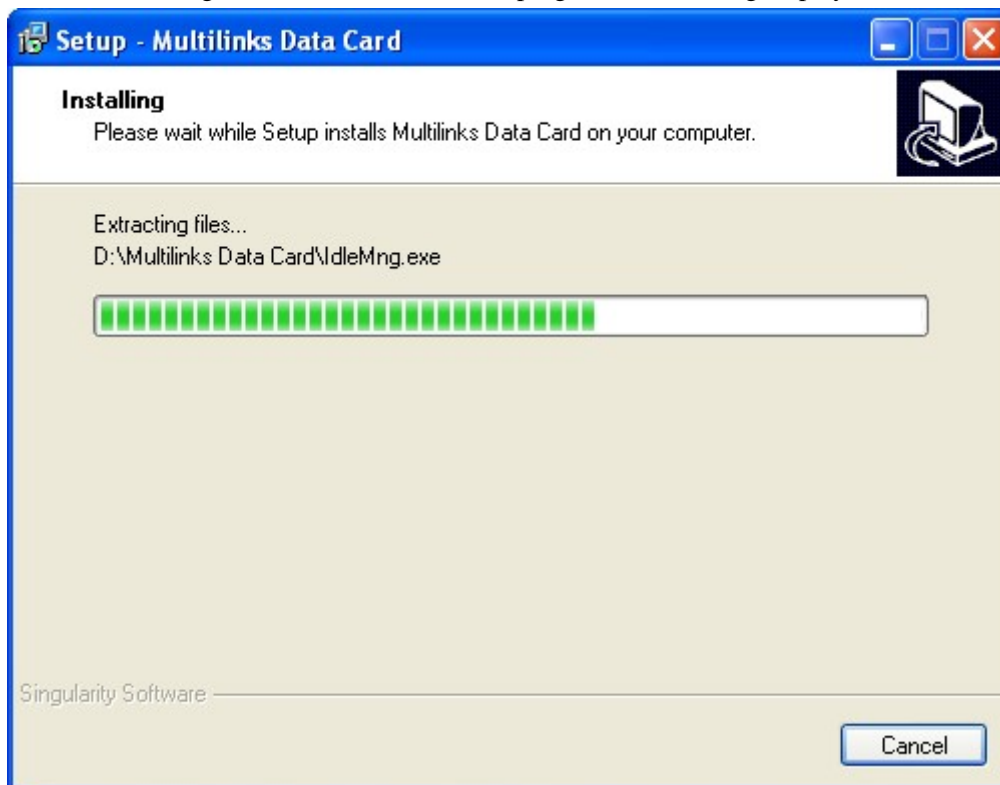
6. Select additional task, and then click "Next".



7. Please click "Install" in "Ready to Install" interface.



8. While waiting for the installation, install progress is also being displayed.




9. Finish installation.



Uninstall software

If you want to uninstall the software, you can use one of the following methods:

1. Go to "Add or delete program" in Control Panel to uninstall the software.
2. Run uninstall program (unins000.exe) under the software installation directory.
10. Run uninstall program in "Start" menu of Windows System.

 Note: You need to delete the files manually that have not been deleted automatically.

Installation of Data Card

Please insert data card into USB port of your computer (PC or laptop). If it is the first time to insert data card, please install right Multilinks Data Card software and its driver firstly.

Generally, the data card could be directly connected with USB port. You could also connect the Data Terminal with PC by using the accompanying data cable, as shown in the following figure. When plug the data card to laptop computer, please do not touching the data card for using. Connect Interface ① with Data Terminal, and interface ② with PC's USB port. Please used the cable less than 15cm.



After data card inserted, in the down right corner of the computer screen, there will be a hint that "Fond new hardware". In the process of installation there will be the following hint, please select "Continue Anyway".





After the installation finished, in the down right corner of the computer screen, there will be a hint that "New hardware has been installed and can be used", you can begin to use Multilinks Data Card software normally.


Features


With Multilinks Data Card, you can enter the corresponding function modules through each function button and menu in the main interface. Interface as follows:




 **Connect:** Create a dial-up connection automatically, and connect your computer to the network successfully.

 **Traffic:** Inquiries and manage the number of connections, traffic and other information during the specified period.

 **Call:** Make or answer a call easily without using mobile phones.

 **Messaging:** Enter "Messaging". It has strong function to manage messages. With it, you can send and receive messages easily.

 **Phonebook:** Manage contacts stored in wireless device and local.

Press "Menu" to callout function menu:

Settings:

Generic settings: set the appearance of the software and Startup.

SMS settings: Set the receive and send of SMS.

Alert Settings: Set the restrictions on time or traffic.

For details, please refer to the ["help"](#) in software.

Exit: Exit the program.


Connect to the network


Press "Connect network", the software will create a wireless network connection automatically.



There will be a series of related information displayed in the bottom of the interface after dial-up succeeded.

Click "Disconnect" button to disconnect with the network.

 Note: Make sure that your network services has been opened.

Click  to callout "Dial-up configuration" window, in which dial-up connection configuration can be set.

Profile name: At the first time of configuration, it will be obtained automatically. If there're other connections, please select from the drop-down menu.

General: You can set a series of parameters of the dial-up connection. (Please fill in according to the actual situation of carrier)

Higher class: Set IP or DNS. Recommend to the use default values.


New: new a dial-up connection. Input the corresponding parameters in the configuration window and click "Save".

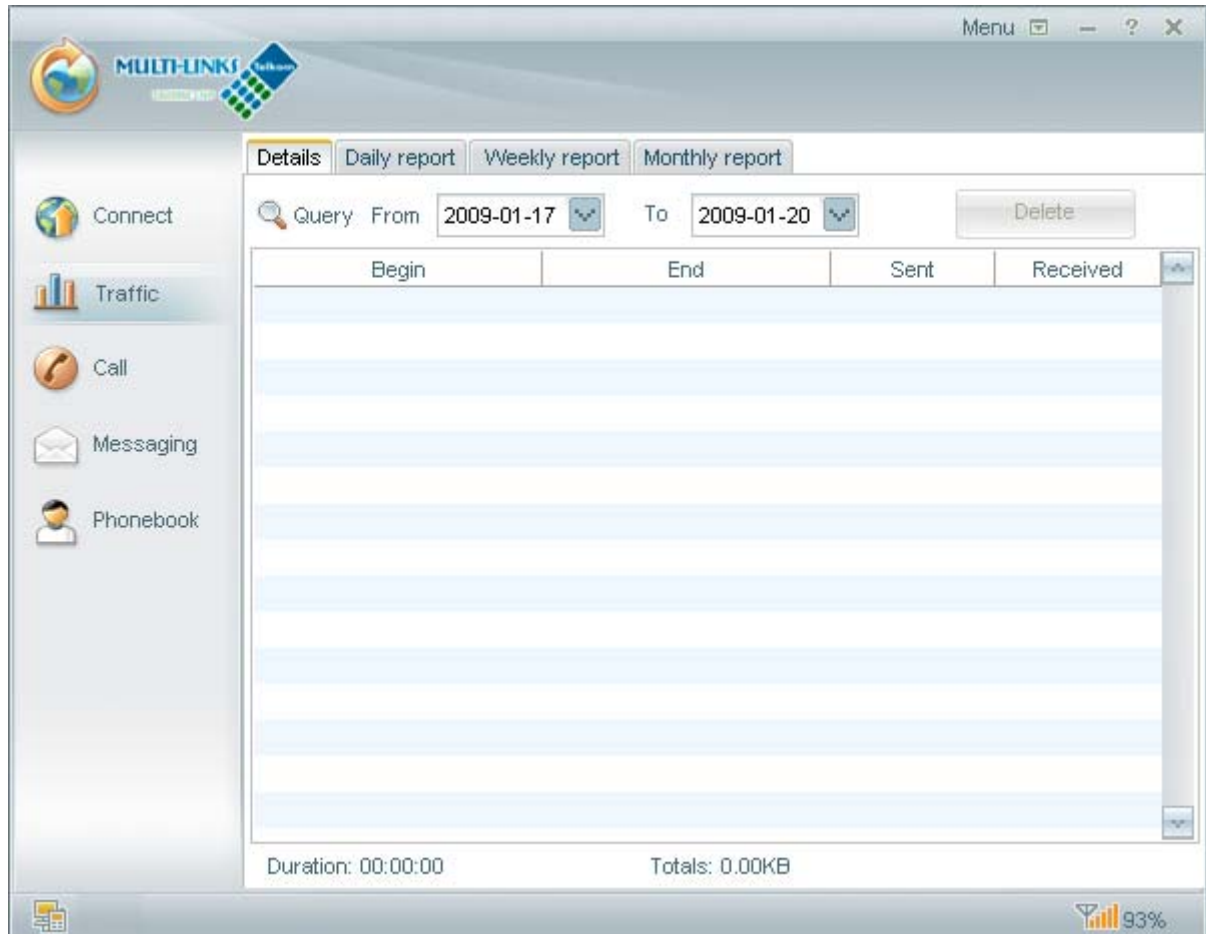
Edit: Reset the dial-up connection's parameters. Click "Save" after finish the setting.

Delete: Delete the current dial-up connection. After the operation, please click "Yes" to confirm the deletion.

Set as default: set the value of the current dial-up connection's IP and DNS as default.


Traffic

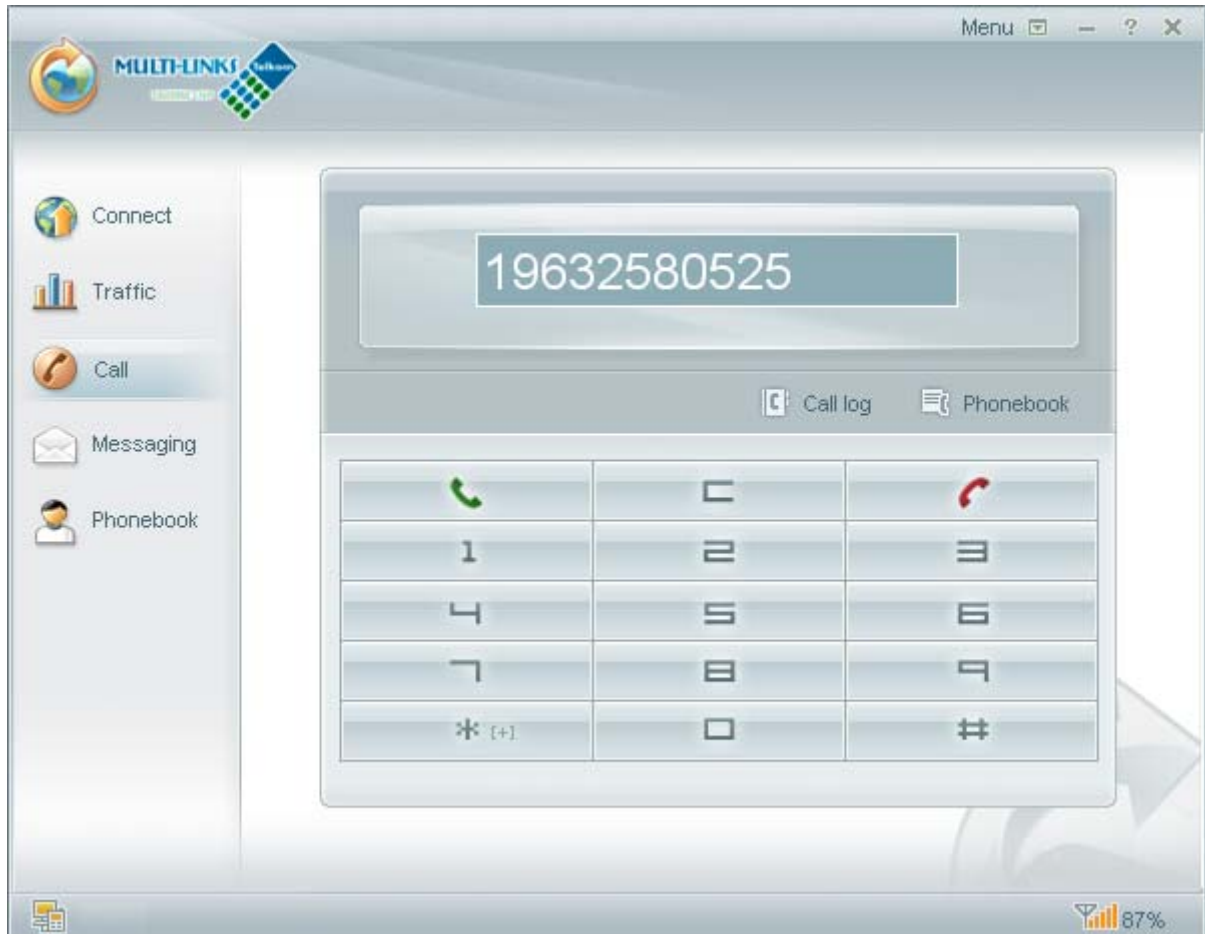
Click  to enter the "Traffic" window. You can view the flow information in the specified period by clicking the option cards at the top of the interface.




For details, please refer to the "help" in software.

Call

You can make and answer calls with software directly. Click  and enter into the "Call" interface, the interface is as follows:



 Call / Answer

 Cancel/ Hang up

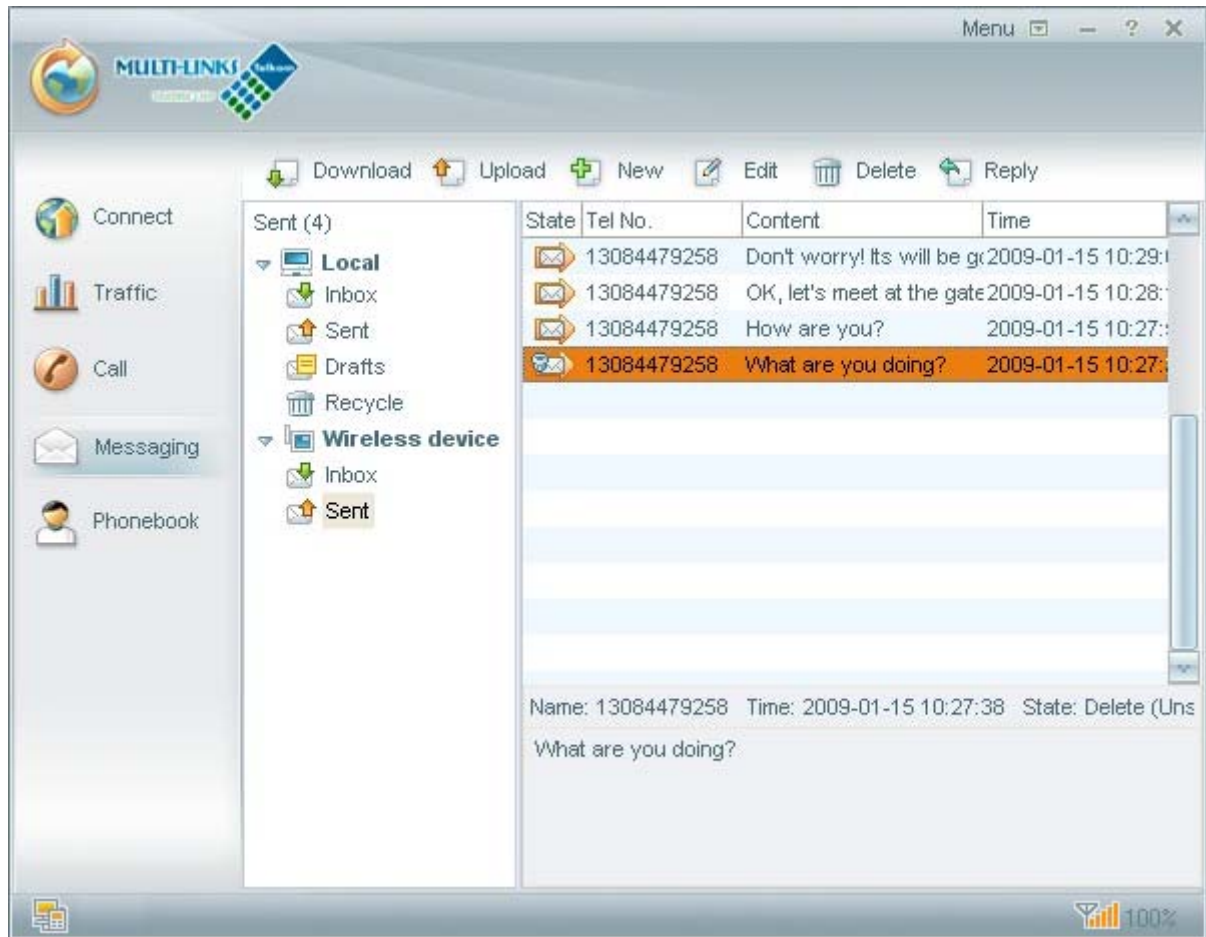
 Phonebook

 Call log

For details, please refer to the "help" in software.

Messaging

Click  to enter "Messaging" interface. As follows:



You can run the following operations by clicking Function button or right-click menu:

Mailbox Management

Download, upload message

New, Delete message

Reply, Forward message


Call

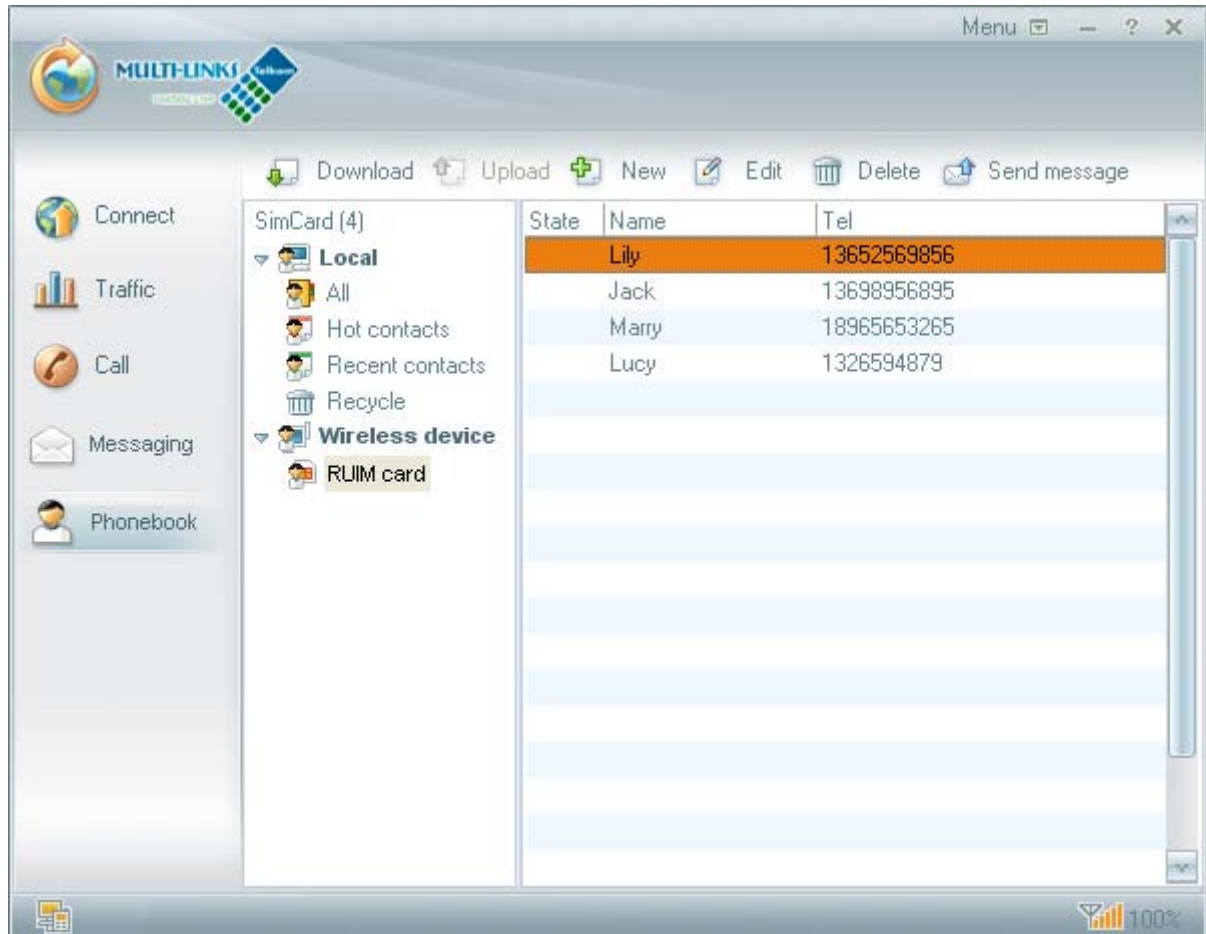
Edit message

SMS Chat

[For details, please refer to the "help" in software.](#)

Phonebook

Click  to enter "Phonebook" interface. There are "Wireless device contact" and "Local Contact" as follows:



You can run the following operations by clicking Function button or right-click menu:

Upload, download device contacts

Export, import phonebook

New, delete contacts

Edit contacts

Send message

Call

For details, please refer to the "help" in software.