

Welcome to
your CE100 multimode radio card.

CONTENTS

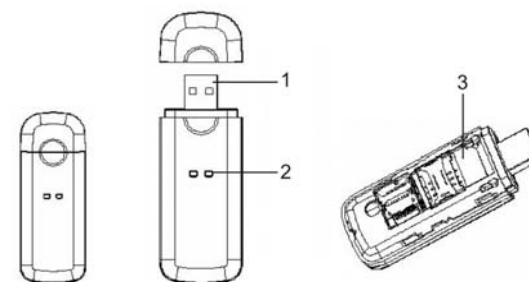
CE100 Introduction	1
System Requirements	2
Operation Guide	2
Care and maintenance	6
Important safety information	8

CE100 Introduction

Connect CE100 with PC, you can enjoy the functions brought by it as the following:

1. Surfing Internet
2. Making Activation(only dial *228)
3. Setting

CE100 Appearance



Note: Graphics only for reference, please use the object as the standard.

1. USB Plug
2. Indicator

Power: Red light on

Link: Yellow light on

3. RUIM Card Slot

Installing RUIM card

System Requirements

PC with USB Port

Windows2000SP4/XP SP2/Vista

Hardware configuration should satisfy the demand of the operating system.

Display Resolution: Above 800x600

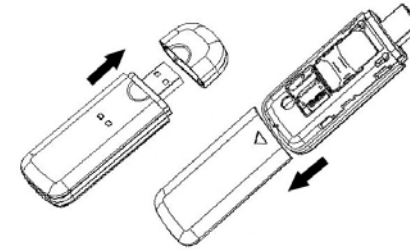
Note: If your PC has lower configuration, the performance of CE100 may be lower.

Operation Guide:

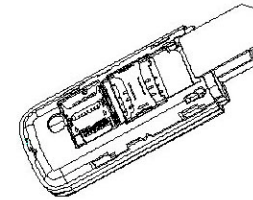
Insert RUIM Card

Acquire a RUIM card, and apply for CDMA RUIM data service. Confirm the PIN is not set, if it is set, cancel the PIN first.

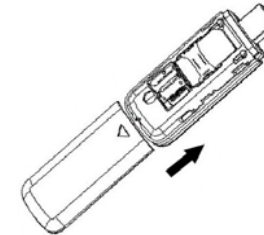
Step1: Remove the cover on the back of CE100.



Step2: Insert the RUIM card on the slot.



Step3: Put the cover back.



Installation of Software

Different operating system, the installation process is different, please according to the operation information.

For example in Windows XP.

1. Connect CE100 with PC

Connect CE100 with PC via USB.

2. Installation of the driver program

After connecting CE100 with PC, a prompt is pop-up. Please install the driver program of Qualcomm first. (fig1)

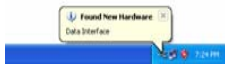


fig1

3. Installation of CE100

1. First installation, enter "my computer", the interface is shown in fig2.



fig2

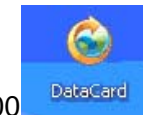
2. Double click "CD driver", choose the file "*.exe", enter dialog box "choose language", choose the appropriate language. If PC has auto run function, the "choose language" would appear automatic, click "yes".

3. Click "next" > "license" appear.

4. Read License Agreement, click "I agree" > "next", the dialog box "select the directory" appear.

5. Select the right directory, click "next">"select additional tasks" in the pop-up window, you can select which you need. Then click "next">"install" > "finish".

6. After installation, enter "my computer", choose "CD driver" and click the right key of the mouse, choose "pop-up", wait few seconds, the "removable disk" and "CD driver" disappear.



7. Back to desktop, click icon of CE100, the main interface appear.(fig 3)

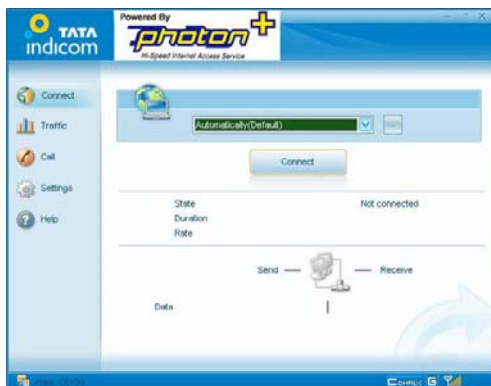


fig3

The installation of CE100 is finish, you can use it.

Uninstall of Application Software

1. Exit Management procedures.
2. Remove the CE100 from the system then pull it out.
3. Open “add/remove program” in the control panel.
4. Accord the prompt, finish uninstall.

Care and maintenance

Your radio card is a product of superior design and craftsmanship and

should be treated with care. the suggestions below will help you to fulfil any warranty obligations and to enjoy this product for many years.

- Keep the radio card and all its parts and accessories out of small children's reach.
- Keep the radio card dry. precipitation, humidity, and all types of liquids or moisture can contain minerals that will corrode electronic circuits.
- Do not use or store the radio card in dusty, dirty areas.
- Do not store the radio card in hot areas. High temperatures can shorten the life of electronic devices, and warp or melt certain plastics.
- Do not store the radio card in cold areas. When it warms up (to its normal temperature), moisture can form inside, which may damage electronic circuit boards.
- Do not attempt to open the radio card. Non-expert handling may damage it.
- Do not drop, knock, or shake the radio card. Rough handling can break internal circuit boards.
- Do not use harsh chemicals, cleaning solvents, or strong detergents to clean the radio card.

- Do not paint the radio card. Paint can prevent proper operation.

Use only the supplied antenna. Unauthorised antennas, modifications, or attachments could damage the radio card and may violate regulations governing radio devices.

All of the above suggestions apply equally to your radio card or any accessory. If any of them is not working properly, take it to your nearest qualified service facility. The personnel there will assist you and, if necessary, arrange for service.

Important safety information

Traffic safety

Do not use the radio card while driving a vehicle. Do not place the radio card on the passenger seat or where it can break loose in a collision or sudden stop.

Operating environment

Remember to follow any special regulations in force in any area and always power off your radio card whenever it is forbidden to use it, or when it may cause interference or danger. Note that the radio card may cause similar interference as any cellular terminal (e.g. mobile phone) and must not be

used in areas where the use of any such device is prohibited.

Use the radio card in its normal operating positions.

Electronic devices

Most modern electronic equipment is shielded from radio frequency (RF) signals. However, certain electronic equipment may not be shielded against the RF signals from your radio card.

Pacemakers

Pacemaker manufacturers recommend that a minimum separation of 20 cm (6 inches) be maintained between a radio card and a pacemaker to avoid potential interference with the pacemaker. These recommendations are consistent with the independent research by and recommendations of wireless technology research.

Persons with pacemakers:

You should always keep the radio card more than 20cm (6 inches) from their pacemaker when the radio card is powered on.

You should not carry the radio card in a breast pocket.

If you have any reason to suspect that interference is taking place, power off your radio card immediately.

Hearing aids

Some digital radio cards may interfere with some hearing aids. In the event of such interference, you may want to consult your service provider.

Other medical devices

Operation of any radio transmitting equipment, including radio cards, may interfere with the functionality of inadequately protected medical devices.

Consult a physician or the manufacturer of the medical device to determine if they are adequately shielded from external RF energy or if you have any questions.

Power off your radio card in health care facilities when any regulations posted in these areas instruct you to do so. Hospitals or health care facilities may be using equipment that could be sensitive to external RF energy.

Persons with pacemakers:

Pacemaker manufacturers recommend that a minimum separation of 20 cm (6 inches) be maintained between a radio card and a pacemaker to avoid potential interference with the pacemaker. These recommendations are consistent with the independent research by and recommendations of wireless technology research.

Children Safety

Put your phone, battery, and charger in places beyond the reach of children. Do not allow children to use the phone, battery, or charger without guidance.

Do not allow children to put the battery in mouth, for electrolyte in the battery is poisonous.

Do not allow children to touch the small fittings. Otherwise, suffocation or gullet jam can be caused if children swallow the small fittings.

FCC RF Exposure requirements:

The highest SAR value reported under this standard during product certification for use next to the body is 1.003 W/kg. This transmitter must not be collocated or operating in conjunction with any other antenna or transmitter. USB dongle transmitter is approved for use in typical laptop computers. To comply with FCC RF exposure requirements, it should not be used in other devices or certain laptop and tablet computer configurations where the USB connectors on the host computer are unable to provide or ensure the necessary operating configurations intended for the device and its users or bystanders to satisfy RF exposure compliance requirements.

This device complies with part 15 of the FCC rules. Operation is subject to the following two conditions: (1) this device may not cause harmful interference, and (2) this device must accept any interference received, including interference that may cause undesired operation.

NOTE: The manufacturer is not responsible for any radio or TV interference caused by unauthorized modifications to this equipment. Such modifications could void the user's authority to operate the equipment.

NOTE: This equipment has been tested and found to comply with the limits for a Class B digital device, pursuant to part 15 of the FCC Rules. These limits are designed to provide reasonable protection against harmful interference in a residential installation. This equipment generates uses and can radiate radio frequency energy and, if not installed and used in accordance with the instructions, may cause harmful interference to radio communications. However, there is no guarantee that interference will not occur in a particular installation. If this equipment does cause harmful interference to radio or television reception, which can be determined by turning the equipment off and on, the user is encouraged to try to correct the interference by one or more of the following measures:

- Reorient or relocate the receiving antenna.
- Increase the separation between the equipment and receiver.
- Connect the equipment into an outlet on a circuit different from that to which the receiver is connected.
- Consult the dealer or an experienced radio/TV technician for help