

CM210 Data Modem User Manual

1 Introduction

Thank you for using CM210 Data Modem. To guarantee the CM210 always in its best condition, please read this manual carefully and keep it for further use.

The pictures, symbols and contents in this manual are just for your reference. They might not be completely identical with your CM210.

With the CM210, you can easily:

- Access the Internet
- View the statistics
- Make and answer calls
- Use the call logs service
- Send and receive message
- Use the phonebook

Features

Technical Standard: CDMA2000 1X

USB Interface Standard: USB 2.0 Full Speed

Maximum Transmit Power: > 24dBm

Data Rate: 153.6kpbs

Frequency Band: 800 MHz

Dimensions: 89×28×10.5mm

Weight: 22g

Operating Temperature: 0℃ to 55℃

Storage Temperature: -20℃ to 65℃

Operating Humidity: 5℃ to 95℃

Storage Humidity: 5℃ to 95℃

System requirements

To use the CM210, the following requirements are recommended for your computer:

CPU: Pentium4 1GHz or above

Memory: 256MB or above

Hard Disk: 50MB free disk space

OS: Windows 2000/XP/Vista or Macintosh Operating System

Interface: USB1.1 or above

Note: If the configuration of your computer is inferior to the recommended configuration, the running performance of the data modem may be affected.

2 Management Software

Installation & Uninstalling

The installation process is subject to different operating systems, such as Windows 2000, Windows XP, Windows Vista, Macintosh .During the actual installation, if any step differs from what is described here, follow the specific installation instructions.

Installation


1. Put the CM210 into the USB interface;
2. The setup program starts automatically, and the CM210 installation interface is displayed later.
3. Follow the instructions of the program;
4. Once the installation completes, the shortcut icon for CM210 Manager appears on the desktop;
5. When the system prompts you that the installation is finished, click Finish to finish the installation of the CM210 Manager.

Uninstalling

Uninstalling the CM210 Manager through the Add / Remove in the Windows.

Accessing & Exiting

Accessing the CM210 Manager GUI

1. To start program, double-click the shortcut icon  of the CM210 Manager on the desktop;
2. If you are prompted to enter PIN code, enter the correct one and click OK;


You can try 3 times to enter your PIN code. If you failed to do that after 3 times, your R-UIM card would be locked, if this happens, use the PUK code to unlock it.

You can try 10 times to enter your PUK code. If you failed to do that after 10 times, your

R-UIM card cannot be used, if this happens, contact your network operator.

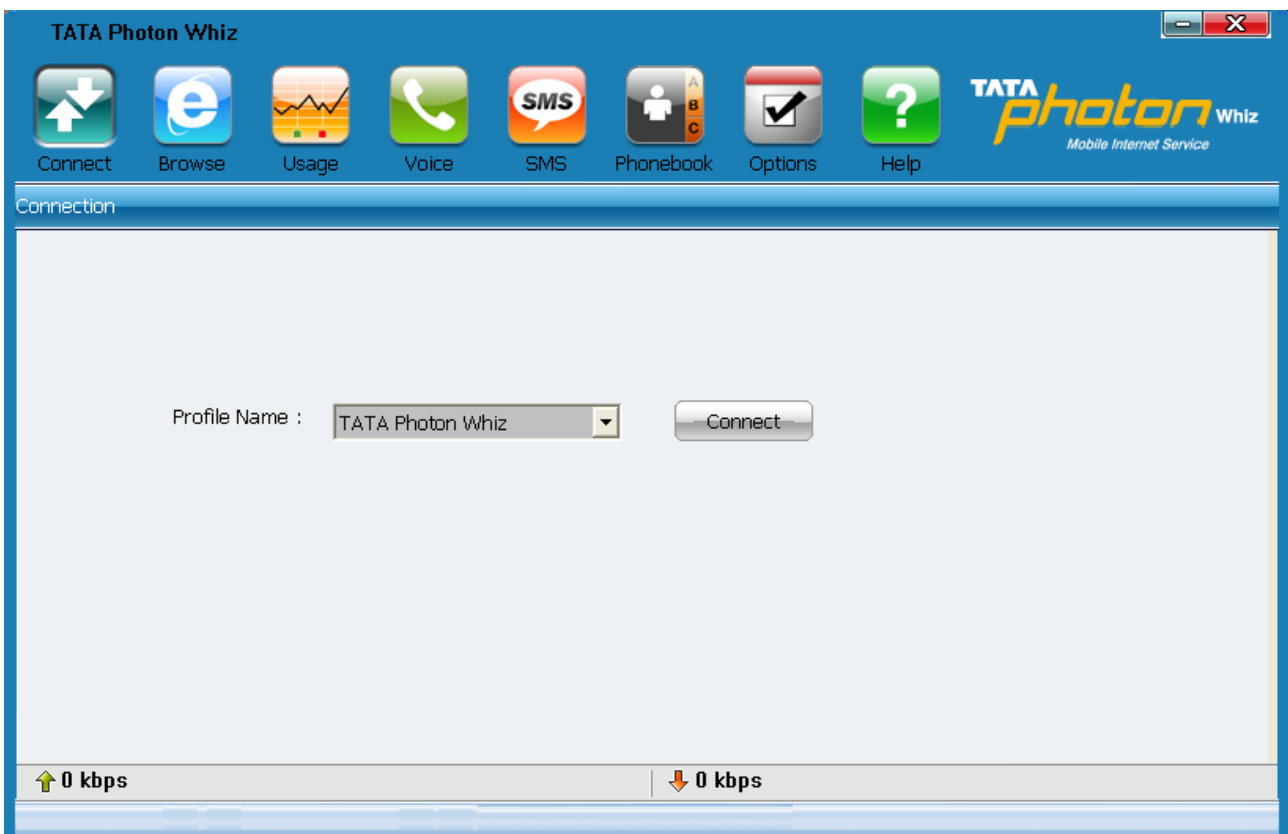
If you failed to enter PIN or PUK code, you can click Cancel to skip over the authentication of the PIN code. Then, the functions related to the R-UIM card are not available for you. However, you can still make emergency calls.

Exiting the CM210 Manager

Click the button  on the right corner on the interface.

Instruction to the main interface

The initial interface after the CM210 Manager starts is as follows.



Shortcut Icon



: Access the Connect interface



: Start the default internet browser in your operating system



: Access the Usage interface



: Access the Call and Call log interface



: Access the SMS interface



: Access the Phonebook interface




: Access the Options interface




: View the Help document

3 Main Function

Internet Service

1. Choose a profile and click **Connect** to set up a connection;
2. When the connection is set up, click  or start the browser on your computer, and then you can access the internet;
3. Click **Disconnect** to disconnect from the network.

Usage Service

Click  and access the Usage interface. You can view the content of the statistics, including sent and received statistic values and the duration of the connection.

You can select the operation you need. The operation options are: Reset statistics, Expand all, Collapse all.

Reset statistics Clear the statistic information

Expand all Start all of the data

Collapse all Close all of the data

Note: The above data of the statistic is for your reference only.

Call Service

When you use the call service, you need to insert the earphone to the earphone jack on the CM210.

Click  to display the Voice Call and History interface.

Make a call

The CM210 provides many easy and quick ways to make a call.

Entering a telephone number directly

You can make a call by entering a telephone number directly.

1. Click the telephone keypad on the call interface;

2. Click **Dial** to make a call;
3. Click **End** to hang up.

Note :You can press **Clear** to delete number on the call interface digit by digit.

·You can press and hold **Clear** to clear the whole number.

Selecting a telephone number in the phonebook

You can make a call by selecting a telephone number in the phonebook.

1. Click **Contacts** and the phonebook interface is displayed. Double-click a contact or select a contact and then click **Dial**.
 - If only one number in the selected contact, then the number is displayed on call interface and dial out.
 - If two or more number(s) in the selected contact, double-click the selected number in the pop-up Select interface or click **OK** after selecting the number. The selected number is displayed on the call interface and dial out.
2. Click **End** to hang up.

Selecting a recently dialed number

You can make a call by selecting a number from the recently dialed number.

1. Click **Dialed/Received/Missed**, and click **Dial** after selecting the number. Then the number is dialed out.
2. Click **End** to hang up.

Answering a call

An alert window is displayed when there is an incoming call. You can choose the options in the follow.

1. Click **Answer** to answer the call
2. Click **Reject** to reject the call

Volume Adjustment

You can adjust volume during the call.

Call History

The call history contains information about dialed, received and missed calls. Each kind of call supports up to 100 items.

Dialed/Received/Missed calls

Click **Dialed/Received/Missed**, and the Dialed/Received/Missed calls interface is displayed.

Saving a number

1. Select an item and click **Save**;
2. The Select Position interface is displayed, and select the position you want to save;
3. Click **OK**;
4. The New Contact interface is displayed. Enter required relevant information for this contact.
5. Click **OK** to save the contact.

Deleting a call

You can delete one or more item(s) from the call history.

1. Select one or more item(s), click **Delete**;
2. Click **OK** to confirm.

Making a call

You can dial the number of the call history.


1. Select an item and click **Dial**;
2. The Dial interface is displayed, and the selected number appears automatically on the interface, and dialed out at the same time.

Sending a message

You can send a message to the number of the call history.

1. Select one or more item(s) and click **SMS**;
2. The CM210 automatically retrieves the number in the selected items, and the Writ SMS interface is displayed.
3. The retrieved numbers are automatically displayed in the blank field behind the Contacts. Input the content for the message and click **Send**.

SMS

Click  to display the SMS interface.

Inbox

The inbox stores messages you have received. It supports up to 300 messages. When the inbox is full and a new message is coming, the earliest message in the inbox is deleted automatically.

Outbox

The messages you have sent out are saved in the Outbox. Up to 300 messages can be stored in the Outbox. When the Outbox is full and an additional message is coming, the earliest message in the Outbox is deleted automatically.

Draft

The messages that you write on the Write SMS window, if having been saved, can be stored in the draft. Up to 300 messages can be stored in the draft. When you save a message, only the message content can be saved in the draft. The designated number cannot be saved.

Archive

The message you have copied from the inbox can be stored in the archive. Up to 300 messages can be stored in the Archive. The designate number cannot be saved.

Viewing a message

You can view a message in the Inbox/Outbox/Draft directly.

1. Click Inbox/Outbox/Draft/Archive to open and browser the Inbox/Outbox/Draft/Archive.
2. When there is a new message, you can see the alert window. Click **View** to view the message, Click **Cancel** to close the window.

Writing a new message

1. Click **New** and the Write SMS interface is displayed;
2. Enter the telephone number(s) by one of the following ways:
 - To enter one or more number directly: In the Contacts textbox, enter the numbers separated by semicolons”;
 - To select a number from the Contacts: Click **Contacts**. Select one or more contact(s) and click **OK**. Select the number to send a message in the pop-up dialog box and click **OK**.
3. Input the message. The maximum length of each message is 160 characters.
4. Click **Send** to send message.
 - After the message is sent successfully, it is automatically saved to the Outbox. If the message is sent unsuccessfully, you are prompted whether to send it again. If you cancel the sending, the message is saved to Outbox.

Click **Save** to save message to the Draft.

Click **Clear** to clear the message content.

Click **Template** to insert template.

Note: · The CM210 supports to send a message to a group of up to 40 numbers.

- When your message contains no more than 160 characters, it is sent as one message.

If this limit is exceeded, the message is divided to several messages and sent one by one.

Replying a message

You can reply to a message directly in the inbox.

1. Select a message and click **Reply**;
2. The telephone number of the original sender appears automatically in the blank filed behind Contacts and you can change it;
3. Input the content for the message to reply;
4. Click **Send** to reply a message.

Forwarding a message

In Inbox/Outbox/Draft, you can forward a message to other contacts.

1. Select a message and click **Forward**;
2. Input the telephone number to forward to, or click **Contacts** to select the number;
3. The content of the message to forward displays automatically in the text box. You can edit it.
4. Click **Send** to forward a message.

Deleting a message

In inbox/outbox/draft, you can delete a message.

1. Select one or more message(s) and click **Delete**;
2. Click **OK** to confirm.

Extracting a number

You can save the number of a message to the phonebook.

1. Select a message and click **Extract**;
2. The Select Number interface is displayed, select the number and click **OK**;
3. The Select Position interface is displayed, select the position and click **OK**;
4. Input the required information of this number;
5. Click **OK**.

Searching a message

The CM210 provides the function of search a message in the SMS.

1. Click **Search**;
2. Input the content in text box to search.

Making a call

You can call back the number of a message sender.

1. Select a message and click **Dial**;
2. The Dial interface is displayed. The number of the message sender is displayed and dialed out automatically at the same time.

Editing a message

In Outbox/Draft, you can edit a message.

1. Select a message and click **Edit**;
2. Change the information and click **Send** or **Save**.

Phonebook Service

The CM210 can store up to 500 contacts.

You can New, Edit and Delete the contacts. You can also send message, make calls to the contacts.

Click  to display the phonebook interface.

Creating a contact

1. Click **New**;
2. Fill in the name, mobile number, home number, company number, group, E-mail and remarks.
3. Click **OK** to save a new contact to the phonebook.

Modifying a contact

1. Select a contact and click **Edit**;
2. Modify the contact;
3. Click **OK** to save.

Deleting a contact

1. Select one or more contact(s) from the phonebook and click **Delete**;

2. Click **OK** to confirm.

Grouping in the phonebook

1. Click **Group**;
2. Create or edit group;
3. Input the required information of this group;
4. Click **OK** to save.

Searching a contact

The CM210 provides the function of searching a contact in the phonebook.

1. Click **Search**;
2. Enter relevant searching terms in the value text box to search.

Making a call

You can dial out the number you have selected from the phonebook.

1. Select the contact that contains the number to dial from the phonebook, and click **Dial**.

If the selected contact contains only one telephone number, the dial interface is displayed automatically.

If two or more telephone numbers are contained in the selected contact, the Select number interface is displayed and you are prompted select one number. After doing that, click **OK** and the dial interface is displayed.

2. The selected number is appears on the dial interface automatically and dialed out automatically at the same time.

Sending a message

The CM210 allow you to select a number from the phonebook and send a message.

1. Select a contact from the phonebook;
2. Click **SMS** and the Write SMS interface is displayed;
3. The Name or number appears in the blank field behind the Contacts. Input the content for the message and Click **Send**.

Security and settings

PIN Code Management

The PIN code is used to prevent your R-UIM card from the invalid use. The PIN code is provided along with the R-UIM card. You can change your PIN code, and you can also enable/disable

the PIN feature. If you enable the PIN feature, you need to enter the PIN code when the CM210 starts up.

Enable/Disable PIN

You can enable / disable PIN feature. If the feature is enabled, you need to enter a PIN code when the CM210 is started.

Enable PIN You need to enter the PIN code when the CM210 is started.

Disable PIN You need to not enter the PIN code when the CM210 is started.

Modify PIN

Enter the current PIN code and the new PIN code. Enter the new PIN code again to confirm it. Click OK to modify it.

Unlock PIN

If your R-UIM card locks, you can use the PUK code to unlock it. You can try 10 times to enter your PUK code. If you failed to do that after 10 times, you R-UIM card cannot be used. If this happens, contact your network operator.

Text Message Setting

Priority Select the priority level for sending a message.

Validity Period In the period of validity, the message center will repeat to deliver a message till it is received.

Defer Delivery Select the time for sending a message.

Delivery Report You can enable or disable this function. If the function is enabled, after you send a message, the network can send a message to inform you that the receiver has got the message you have sent.

Alert Window Check the box, and an alert window is displayed whenever a new message comes.

- Click **View** to see the message
- Click **Cancel** to close the window

Alert tone If a sound file is selected, it plays on the earphone of CM210 whenever a new message comes.

- Click **Browse** to select a sound file

Network Setting

CDMA Roaming

You can choose no roaming or auto roaming in the window.

Profile Setting

Creating a profile

1. Click **New**;
2. Enter a new profile name in the Profile Name field
3. Enter required relevant information for the settings
4. Click **Save** to finish

Deleting a profile

1. In the Profile Name field, select a profile to delete
2. Click **Delete**.

Modifying a profile

1. In the Profile Name field, select a profile to modify
2. Click **Edit**
3. Modify the profile
4. Click **Save**.

Preference Setting

Start Up Setting

You can set the CM210 Manager to connect internet when program starts up and Start main window minimized.

Standby / Hibernate Setting

You can set CM210 Manager to prevent or allow standby / hibernate.

Usage Limit


You need to enter the password when the feature of usage limit is used. The default password is blank.

1. Enter required relevant information for the settings.
2. Click **Save**.

Diagnostics

The CM210 allows you to query information for the CM210 and the R-UIM card.

Help Document

Click  to display the Help interface. The CM210 provides the function of viewing help document.

FCC RF Exposure requirements:

The highest SAR value reported under this standard during product certification for use next to the body is 1.031 W/kg. This transmitter must not be collocated or operating in conjunction with any other antenna or transmitter. USB dongle transmitter is approved for use in typical laptop computers. To comply with FCC RF exposure requirements, it should not be used in other devices or certain laptop and tablet computer configurations where the USB connectors on the host computer are unable to provide or ensure the necessary operating configurations intended for the device and its users or bystanders to satisfy RF exposure compliance requirements.

USB dongle transmitter is approved for use in typical laptop computers. To comply with FCC RF exposure requirements, this USB dongle should not be used in other devices or certain laptop and tablet computer configurations where the USB connectors on the host computer are unable to provide or ensure the necessary operating configurations intended for the device and its users or bystanders to satisfy RF exposure compliance requirements.

This device complies with part 15 of the FCC rules. Operation is subject to the following two conditions: (1) this device may not cause harmful interference, and (2) this device must accept any interference received, including interference that may cause undesired operation.

NOTE: The manufacturer is not responsible for any radio or TV interference caused by unauthorized modifications to this equipment. Such modifications could void the user's authority to operate the equipment.

NOTE: This equipment has been tested and found to comply with the limits for a Class B digital device, pursuant to part 15 of the FCC Rules. These limits are designed to provide reasonable protection against harmful interference in a residential installation. This equipment generates uses and can radiate radio frequency energy and, if not installed and used in accordance with the instructions, may cause harmful interference to radio communications. However, there is no guarantee that interference will not occur in a particular installation. If this equipment does cause harmful interference to radio or television reception, which can be determined by turning the equipment off and on, the user is encouraged to try to correct the interference by one or more of the following measures:

- Reorient or relocate the receiving antenna.
- Increase the separation between the equipment and receiver.
- Connect the equipment into an outlet on a circuit different from that to which the receiver is connected.
- Consult the dealer or an experienced radio/TV technician for help