



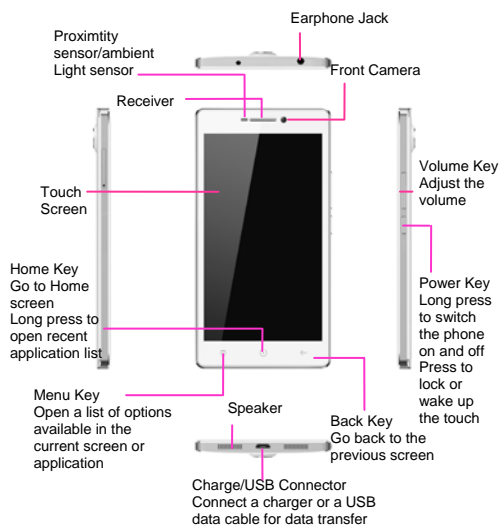


Precautions

	Please carefully read and observe the terms below: Safe power on Do not use your mobile phone where it is forbidden to use or you might cause a disturbance or danger.
	Safe transportation first Please observe all related local laws and regulations. Do not use your mobile phone while driving. Safe transportation should be considered first when driving.
	Turn off when in the hospital Please follow related limitations. Please switch your mobile phone off when near a medical instrument.
	Turn off on an airplane Please follow related limitations. Do not use your mobile phone on an airplane.
	Turn off when at a gasoline station Do not use your mobile phone at a filling station or around fuels or chemicals.
	Turn off around exposure Area Please observe related limitations and do not use your mobile phone near an area where explosions can occur.
	Backup Remember to make a backup or keep a written record of all important information saved in your mobile phone.
	Use qualified after sales service Only a qualified technician can install or repair your mobile phone. Please contact the authorized service center in case of phone failure.
	Accessories and batteries Only use the authorized accessories and batteries and do not connect to incompatible manufacturers or products.

Your phone



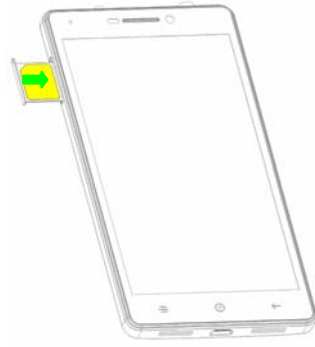
Your phone



SIM Card

Installing the SIM Card

Make sure that the clipped corner of the SIM card is facing the correct direction and the metallic contacts are facing the correct direction. Slide the SIM card into the card slot until it stops.



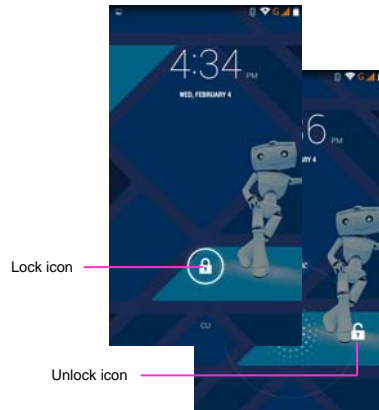
Lock & Unlock Screen

Locking the Screen

To save your battery, prevent accidental touches or when you want to wipe smudges off your touch screen, put the touch screen to sleep by pressing the Power Key

Unlocking the Screen

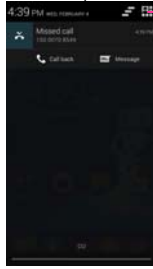
To wake up the touch screen, just press the Power Key again, and then drag the lock icon to the right on the screen to unlock according to the clue on the screen.



Home Screen

Status Bar and Notifications

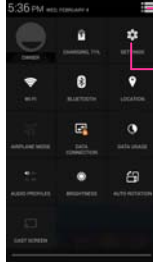
The status bar at the top of the screen contains icons that tell you about messages and phone status and shows what's going on in your phone. You can drag down the status bar to open the Notification panel and get more information.



Touch to open the toolkits panel

Toolkits

In the toolkits you can quickly start the common applications such as Bluetooth, WLAN and so on.



Touch to open the Notification panel

Touch to open the system settings

Home Screen

The Home screen is your gateway to the main features in your phone.

Notifications
Drag down to open
the Notification panel

Status bar



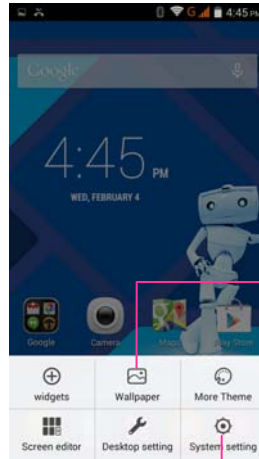
Slide the Home
screen left or
right to view
more content in
other panels on
the Home
screen

The favorite tray
Touch the applications in the tray to
enter applications
Touch and hold the applications to
drag them in or out from the tray

Launcher
Touch to enter Main menu
Browse all the installed
applications

Customizing

The phone provides you with Options menus.
Touch the Menu Key to enter customizing:




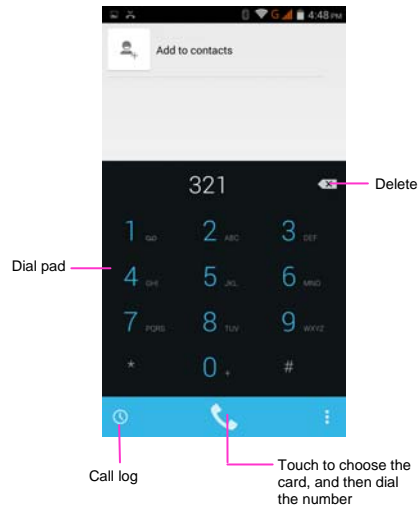
Touch to select a wallpaper, and set it as the wallpaper of Home screen

Touch to enter the Settings, and set the system preferences

Phone Function

Making a Call

Touch  to enter the Dial pad.
The phone offers you several ways of making a call.
You can make a call through the Phone, People, Messaging and Call log.



Connecting to WLAN

Connecting to WLAN

1. You can connect to the WLAN, and use it to surf the Internet at high speed and download.

Touch Launcher → Settings → WLAN.

2. Turn on the switch to activate WLAN.



3. Touch WLAN.

4. Choose an available WLAN network to connect




5. Secured networks are indicated with a Lock icon. If the network is secured, you are prompted to enter a password or other credentials (Ask your network administrator for details)

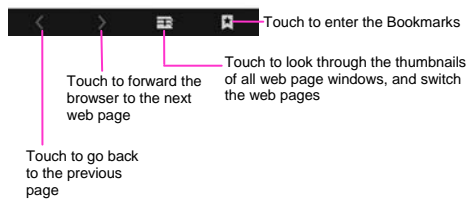


6. Touch "Connect".

Accessing the Internet

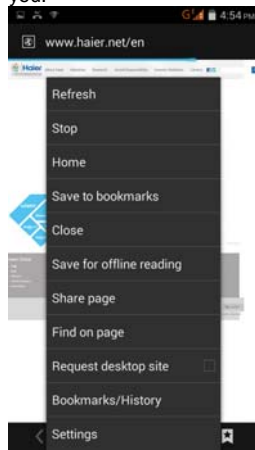
Using the Browser

Touch  to enter the Browser.




Accessing the Internet

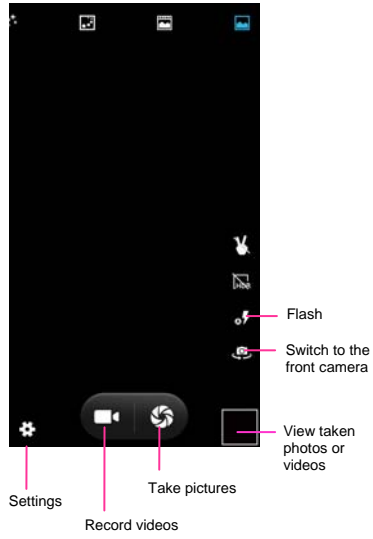
When you are viewing the web page, touch the Menu Key, the following options are available to you:



Taking Pictures/Videos


Taking pictures and videos

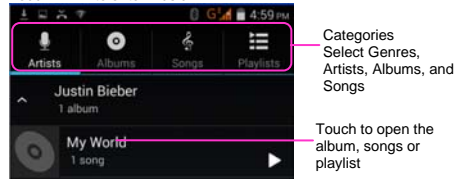
Touch  to enter the Camera.



Playing Music

Music Player

Touch  to enter Music.



Troubleshooting

Frequently Asked Questions	Cause and Solution
Fail to turn on	Press the Power Key for over 1 second. Check if the battery is properly connected. Please remove and install it again, retry to turn it on; Check if battery is appropriately charged.
Fail to connect network	Weak signal. Please try and move to a location with strong signal and try connecting to the network again; Please ensure that you are not beyond the network coverage of service providers; Please ensure you have a valid SIM card. Please contact your network provider for further information;
Poor quality of calling	Please check if the sound volume is tuned improperly In an area with poor receiving condition, example: basement, the signal might be weak. Try searching a location with stronger signal reception and call again. While using the mobile phone in the peak period of communication, like commute time, you may be unable to call because of line congestion.
SIM Card Error	Dirt on the metal surface of an SIM card. Use clean cloth to wipe the metal touch point on an SIM card. The SIM card is not installed. The SIM card is damaged. Please contact your network service provider.
Callers cannot contact you	Please check if the mobile phone is on and connected with the network. Please check if the Call barring or call divert is activated. Please check if the SIM card is valid.
Fail to set some functions	Wrong operation. The network provider does not support the function, or you have not applied for it.

§ 15.19 Labeling requirements.

This device complies with part 15 of the FCC Rules. Operation is subject to the following two conditions: (1) This device may not cause harmful interference, and (2) this device must accept any interference received, including interference that may cause undesired operation.

§ 15.21 Information to user.

Any Changes or modifications not expressly approved by the party responsible for compliance could void the user's authority to operate the equipment.

§ 15.105 Information to the user.

Note: This equipment has been tested and found to comply with the limits for a Class B digital device, pursuant to part 15 of the FCC Rules. These limits are designed to provide reasonable protection against harmful interference in a residential installation. This equipment generates uses and can radiate radio frequency energy and, if not installed and used in accordance with the instructions, may cause harmful interference to radio communications. However, there is no guarantee that interference will not occur in a particular installation. If this equipment does cause harmful interference to radio or television reception, which can be determined by turning the equipment off and on, the user is encouraged to try to correct the interference by one or more of the following measures:

- Reorient or relocate the receiving antenna.
- Increase the separation between the equipment and receiver.
- Connect the equipment into an outlet on a circuit different from that to which the receiver is connected.
- Consult the dealer or an experienced radio/TV technician for help.

Specific Absorption Rate (SAR) information:

This wireless phone meets the government's requirements for exposure to radio waves. The guidelines are based on standards that were developed by independent scientific organizations through periodic and thorough evaluation of scientific studies. The standards include a substantial safety margin designed to assure the safety of all persons regardless of age or health.

FCC RF Exposure Information and Statement the SAR limit of USA (FCC) is 1.6 W/kg averaged over one gram of tissue. Device types: I70 (FCC ID: SG720151015170) has also been tested against this

SAR limit. The highest SAR value reported under this standard during product certification for use close to head is 0.528W/kg and body-worn is 0.485W/kg. This device was tested for typical body operations at 1.0cm from the body. The use of accessories that do not satisfy these requirements may not comply with FCC RF exposure requirements, and should be avoided.

Body Operation

This device was tested for typical body support operations. To comply with RF exposure requirements, a minimum separation distance of 1.0 cm must be maintained between the user's body and the device, including the antenna. Third-party belt-clips, holsters, and similar accessories used by this device should not contain any metallic components. Body accessories that do not meet these requirements may not comply with RF exposure requirements and should be avoided. Use only the supplied or an approved antenna.