

Haier

Haier

Automatic Drum Washing Machine

Instruction Manual

Please read the manual carefully before using this machine.

Please keep it properly for reference.

Haier

● Product Characteristics

- DD variable-frequency motor technology
- Best door-opening height design
- Steel rib integrated structure
- Window mat anti-bacterial and anti-mildew technology
- Drying function (applicable to XQGH80-HB1466 and XQGH70-HB1266 models)
- Air washing function
- Double-balanced ring vibration reduction technology
- Self-cleaning function
- Drawer dox design

● Specification

Model				
Power	220-240V/50Hz			
Inflowing water pressure (MPa)	0.03~1.0	0.03~1.0	0.03~1.0	0.03~1.0
Rated washing capacity (kg)	8	8	8	8
Rated spinning capacity (kg)	8	8	8	8
Rated drying capacity (kg)	5	5	/	/
Rated spinning speed (rpm)	1400	1400	1400	1400
Washing noise dB(A weighted)	50	50	50	50
Spinning noise dB (A weighted)	68	68	68	68
Energy efficiency rating	B	B	A+++	A+++
Overall Dimension (H/D/W) (mm)	1200/680/600	1200/680/600	1200/680/600	1200/680/600





Displayed code	Code paraphrase	Troubleshooting methods
<i>AUED</i>	The washing machine is in automatic weighting condition	Normal prompt
<i>AL-1</i> <i>AL-2</i> <i>AL-3</i> <i>AL-4</i>	Level codes of washing quantities for dryer	Normal prompt
<i>L-1</i> <i>L-2</i> <i>L-3</i> <i>L-4</i>	Level codes of washing quantities for washer	Normal prompt
<i>PoFF</i>	Shut down of the washing machine	Normal prompt
<i>Loct</i>	Not meet door opening condition, not allow to unlock the door lock	Normal prompt
<i>CL</i>	Children lock prompt	Normal prompt
<i>End</i>	All procedures end	Normal prompt
<i>E1</i>	Drainage fault	Check whether the drain pipe is blocked or bent and clean the drain filter
<i>E2</i>	Abnormal locking of the door lock	Re-close the door of the washing machine. Re-lock the door after the "Start" key is pressed
<i>E4</i>	Abnormal water inflowing	Check whether the faucet is opened, the water pressure is too low or water is cut off. Eliminate it by pressing the "Start/Pause" key. If the phenomenon still continues, please contact the maintenance department
<i>Unb</i>	Unequal distribution during dehydration	Check the adjustable feet and whether the washing machine is steady; take clothes out and scatter and equally distribute them; if the phenomenon still continues, please contact the maintenance department.

If the following alarm icons appear, press the "Power" key to shut down the machine for eliminating them; and if they still appear, unplug the power plug and contact the agency or the manufacturer.






<i>F3</i>	<i>F4</i>	<i>F7</i>	<i>E8</i>	<i>F9</i>	<i>FA</i>	<i>FC</i>
<i>Fd</i>	<i>FE</i>					

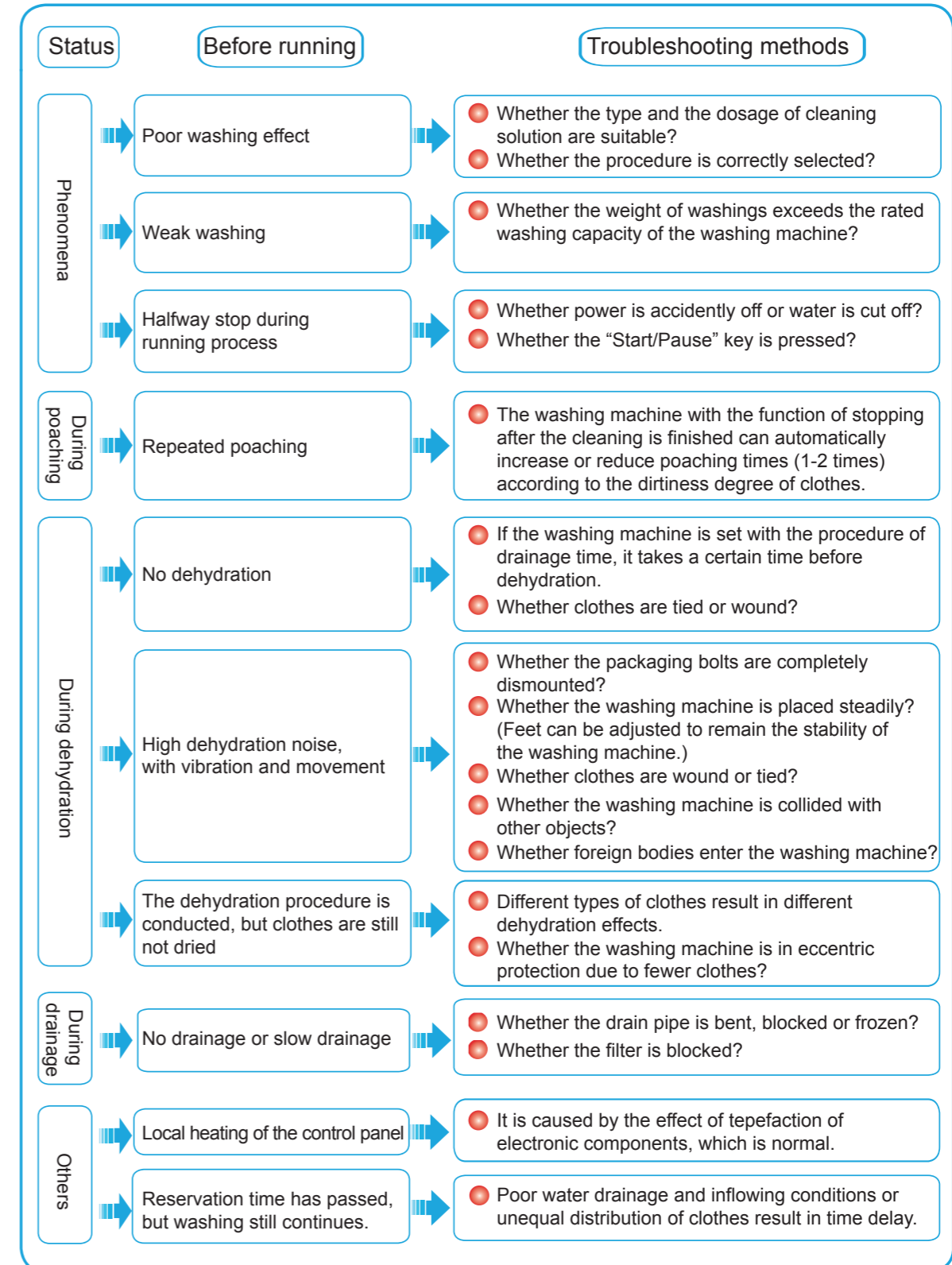
the future is NOW

Full-automatic Washing Machine.
Please read the manual carefully before using this machine.
Please read carefully safety cautions in the next page that you can safely and correctly use it.
Diagrams in this manual are diagrammatic drawings. The appearances and colors of the product and its parts may be different from those shown in the diagrammatic drawings of this manual owing to product's improvement and series expansion, please subject to material object. Apologize for this.
This machine belongs to class-I appliance, please ensure electrical safety when you use it.

-  Alarm  (It is not allowed to operate the areas with the mark, otherwise, it is likely to damage the washing machine or endanger the personal safety of users.)
-  Note  (The contents with the mark relate to product and user's safety, thus the user shall undertake the operation in strict accordance with requirements, otherwise, it is likely to cause damage to the washing machine or endanger user's safety.)

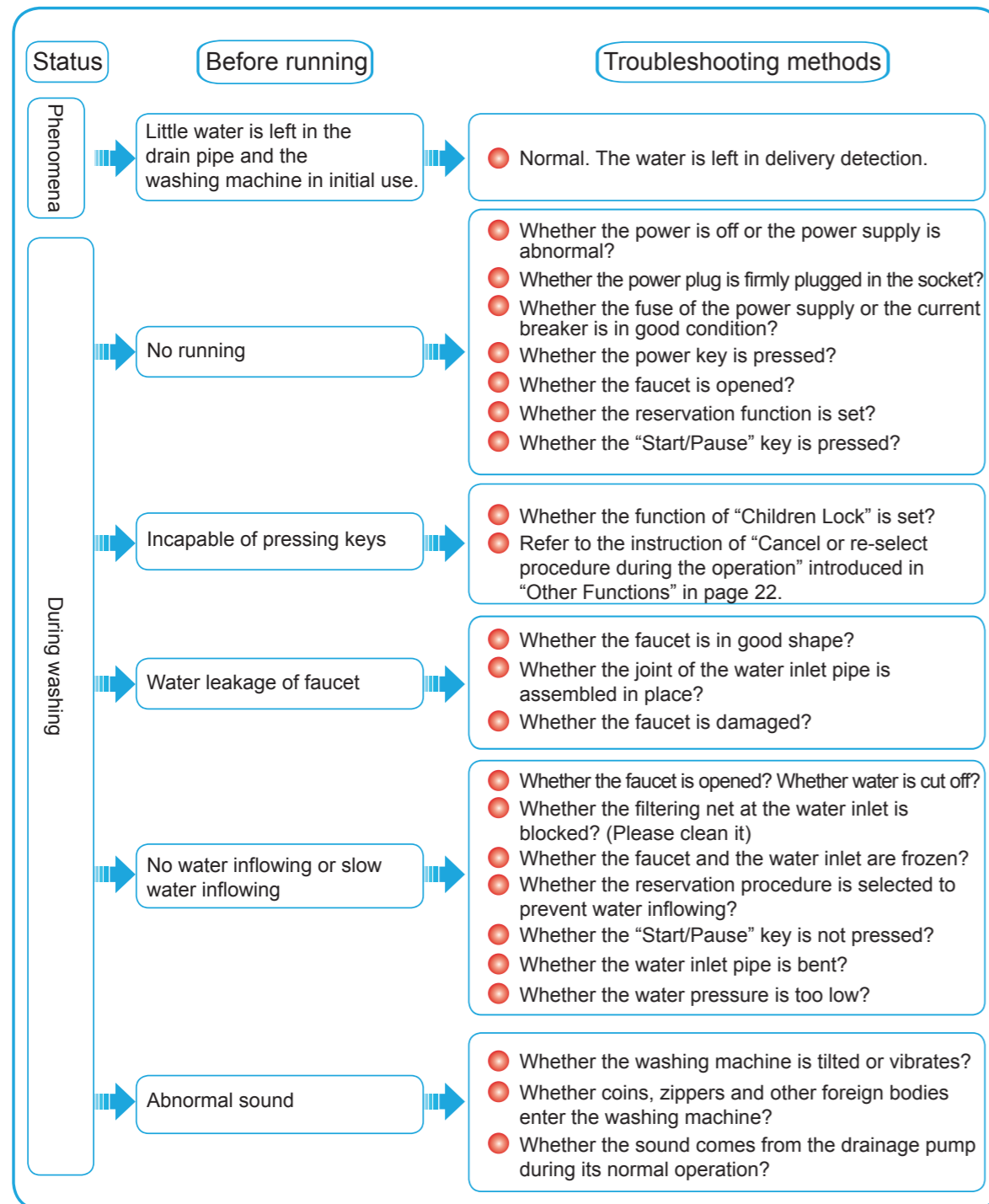
1. Safety Cautions

- 
 - Not damage, process, randomly bend, clamp, twist, unplug or bundle the power line and the plug.
 - Not place heavy objects on the power line and the plug.
 - Not touch, insert or unplug the plug with wet hands.
 - Stop using a damaged power line and plug as well as a loose socket.
- 
 - Please use an independent power socket with maximum safe current more than 15A. The grounding terminal in the socket shall be reliably grounded, and the socket shall be a qualified product with CE certification.
 - Please completely insert the power plug into the socket aperture and clean the plug regularly, since it will cause poor insulation, fire, etc. in case of dust accumulation and moisture.
 - Ensure that the power plug is unplugged when the washing machine is not used for a long time or is being cleaned.
 - The user shall prepare fuses and other overload protection devices with suitable specifications at home, and the ammeter, the power line and the socket should be able to withstand the current of 10A.
 - If the power line is damaged, it must be replaced by the manufacturer, the agent or other persons with relevant expertise so as to avoid dangers.
- 
 - Not wash and dry clothes stained with beauty oil, massage oil, edible oil, animal oil, machine oil, dry cleaning oil, propellant, diluents, petrol, resin and other inflammable substances.
 - Not place inflammable substances into the roller or near the washing machine.
 - Not wash, poach or dewater the raincoat, bicycle cover, feather clothing unsuitable for machine washing, waterproof clothing and carpet, otherwise, it will cause abnormal vibration and damage to the washing machine and the clothing during the dewatering process.
 - Not wash the clothing with inflammable cleaning agent, dry cleaning solvent and other chemicals; not use inflammable spraying agent near the washing machine; and not insert or unplug the power plug of the washing machine during the leakage of coal gas and other inflammable gas.
 - Not open the drain filter during the operation, preventing plenty of water from flowing outwards.
 - Must use a new water inlet pipe and not allowed to reuse a used water pipe.
 - Under the normal operation of the washing machine, the pressure of connected running water is allowed to be 0.03MPa at minimum and 1.0MPa at the maximum.
- 
 - Not allow children to look at and enter the inner roller, to avoid injuries and personal safety accidents of children.
 - Not place the low rack and bench near the washing machine, to prevent children from touching the control panel of the washing machine through them.
 - Not allow children to use the machine independently.
 - Not place the washing machine in such place with much moisture and vulnerable to wind and rain, otherwise, water will remain on the electrical appliance, resulting in ignition damage or other incidents. If water is accidentally sprayed or permeated into the washing machine, the machine is not allowed to use until it is dried by air.
 - Not directly place the washing machine on an un-ventilated carpet; not block up the ventilation opening at the bottom thereof; not place the machine close to the wall or the furniture so as to avoid incidents; and not place the washing machine on a table higher than the ground for use, so as to prevent the washing machine from falling off.
- 
 - Not put and extend hands or feet into the lower part of the washing machine.
 - Not climb to the upper part of the washing machine or place easily-damaged objects on the washing machine.
 - Not place the washing machine in such place near heat source, exposed to sunlight and easily frozen in winter, so as to avoid the aging of plastic parts and rubber parts.
 - Not touch the inner roller, metal parts, the window screen, the master control board, the distributor box and metal buttons of clothing during the washing or drying process or in the short time after drying, to avoid the scalding. Furthermore, not touch the machine when hot water is being discharged.



14. Troubleshooting

The following situations are not always faults. Please check the situation according to the following sheet prior to delegated maintenance. If the fault is confirmed, please contact the agency or the manufacturer, it is not allowed to repair it on the own. As for those items without the requirement on power-on detection, please unplug the power plug to detect them.



2. Table of Contents

1	Safety Cautions	2
2	Table of Contents	3
3	Operation Cautions.....	4
4	Names of Components (Accessories)	5
5	Disassembly of Packaging and Transporting Parts and Adjustment of Feet	7
6	Preparation before Using	8
7	Control Panel and Procedural Specification.....	10
8	Procedural Guide	12
9	Preparation before Washing and Referenced and Disinfectant	13
10	Operation Steps	14
11	Application of Detergent Dispenser Box	15
12	Other Function	15
13	Cleaning/Maintenance	17
14	Troubleshooting	18

3. Operation Cautions



Drawer

- Please ensure that the cover of the drain filter is tightly closed before the drawer is closed, so as to prevent the filter cover from being damaged.
- It is suggested that an object exceeding 5 kg should be not placed in the drawer.
- Please do not tread the drawer and the board after the drawer is drawn out.
- Not put the baby or the pet into the drawer, avoiding safety accidents.
- Not pour water into the drawer.



Others

- Since the running water pressure is unstable, please check the joints of the water inlet pipe, the faucet and the drain pipe each time before using the washing machine, to ensure the fastness of the joints. If the water pipes are loosened or water is leaked, please close the faucet and properly handle it or contact the agent, the manufacturer or relevant technicians. It can not be used before connection.
- Not clamp the clothing when the door of the washing machine is closed.
- Please ensure that the faucet is closed after the washing is finished.
- When the washing machine is not used, please slightly open the door of the washing machine and wipe water and bubble left on the window pad and the machine door glass, so as to avoid odor. The washing machine shall not be covered by a plastic dustproof cover to avoid moisture accumulation.
- Not open the detergent dispenser box when the machine is operating, to avoid uncompleted removal of detergent and softener.
- Not wash women's underwear with steel wires in the washing machine, to prevent the washing machine and the clothing from being damaged.
- The machine just can wash the clothing suitable for machine washing. If in doubt, please follow the washing introduction logos on the clothes.
- Water and power shall be cut off each time after the washing is finished, and clean the interlayer of the observation window pad to prevent dirt from adhering to the clothing again.
- If the machine is used at the temperature of 0°C or below, the water inlet valve and the drainage system may be damaged.
- If the machine is placed in the place with the temperature of 0°C or below, the machine can be used after being moved to a place with room temperature for standing for 2-4 hours.
- Not place the clothing contaminated by chemicals in the washing machine.
- As for such kind of washing machine with the drying function, it is not allowed to put the drying shelf into the washing machine when the washing procedures (except for the function of "Shelf Drying") is selected, to prevent the washing machine from being damaged during the operation.
- As for such kind of washing machine with the drying function, when the clothing is being dried, please ensure that the faucet is opened, as cooling and dehumidifying procedures are needed. Otherwise, the drying procedure can not be conducted.
- Please put small articles such as handkerchief, gloves and socks, and easily-winding and damaged clothes into washing net bags for washing, poaching and dehydration, so as to prevent the small articles from dropping between the inner roller and the window pad of the washing machine and result in inadequate washing and drying. The weight of articles placed in each washing net bag shall not exceed 300g, and those washing net bags placed with articles shall be placed into the washing machine together with other clothes which are not put in net bags, otherwise, the balance of the washing machine will be reduced and the machine will abnormally vibrate.
- After high-speed dehydration, the clothes will adhere to the inner roller wall of the washing machine due to the effect of centrifugal force. If follow-up drying is needed, it is suggested that the user takes out the clothes and re-places them into the washing machine for drying after the clothes are scattered in a shaking manner, in an attempt to achieve the best drying effect.
- The product is household model washing machine, it can be used in family. It will not be free repair if used in others place (for example school, flat, army, corporation, hospital, washhouse, cabaret, hotel, rest house etc).

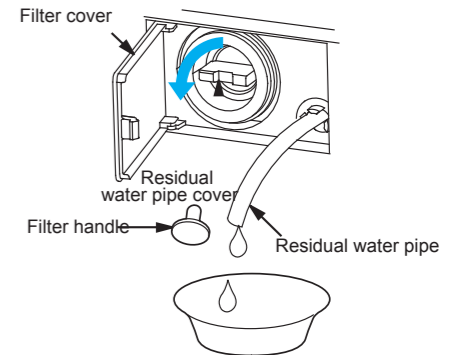
13. Cleaning/Maintenance

Please unplug the power plug from the socket before cleaning and maintenance.



Clean Drain Filter (at least one time every 30 days)

- ① Start the only dehydration procedure to conduct the drainage.
- ② After water is discharged from the washing machine, please insert a proper coin, a plain-end screw driver or other tools into the groove on the right side of the filter cover, and the filter cover is pressed rightwards and opened leftwards. Slightly pull a residual water pipe out, take the residual water pipe cover off, and completely discharge water left in the pipe. And then block the residual water pipe cover, place the residual water pipe in place and clamp it.
Note: It is not allowed to pull the residual water pipe with excessive force, otherwise, it is easy to result in damage to the residual water pipe and water leakage. Please firmly block the residual water pipe cover, otherwise, it is easy to lead to water leakage.
- ④ Take the filter out by twisting the filter handle with hands in counter-clockwise direction.
- ⑤ Remove thread ends and sundries on the filter and clean the filter with clear water.
- ⑥ Insert the filter along the direction of the groove and tightly screw the filter clockwise.
- ⑦ Check whether the residual water pipe cover is blocked and cover the filter.



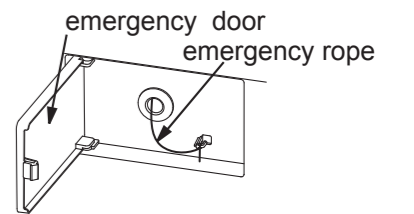
Emergency door operation

Note: Emergency door can't be operated when the machine is working.

Please be sure that:

The power plug from the outlet Barrel temperature is below 50 degrees, and the drum stopworking.

- ① If the barrel have water, the first step is follow the instruction on the filter cover, drain the water out.
- ② Open the Emergency door, pull the emergency rope, then open the door by hand.
- ③ Reset the Emergency rope and emergency door, close the drawer.



Clean Detergent Dispenser Box

- ① Outwards pull the detergent dispenser box to the end, as shown in Figure 1.
- ② Press the middle "PUSH" mark and slightly press it downwards to take the dispenser box out.
- ③ Clean the dispenser box and the siphon cap with clear water.
- ④ Re-buckle the siphon cap and horizontally push the dispenser box inwards and close it.

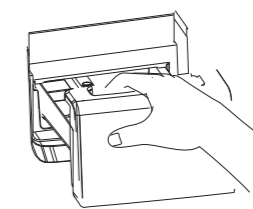


Figure 1

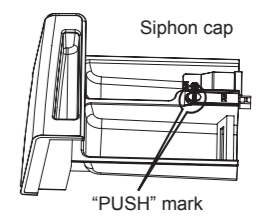


Figure 2



Clean Filtering Net at joint of Water Inlet Valve

Kindly reminder: to improve the washing effect, please do not throw away the filtering net at the water inlet.

In case of unsmooth water inflowing, please timely clean the filtering net at the water inlet. The specific operations are as follows:

- ① Unscrew the water inlet pipe, as shown in Figure 1;
- ② Take the filtering net out with nose pliers, as shown in Figure 2;
- ③ Clean the filtering net with a soft bristle brush, as shown in Figure 3;
- ④ Assembly the filtering net, as shown in Figure 4;
- ⑤ Reconnect the water inlet pipe, as shown in Figure 5;



Figure 1

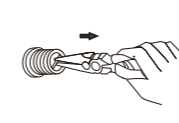


Figure 2



Figure 3

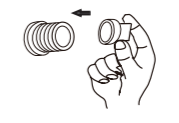


Figure 4

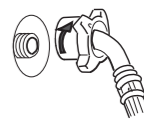


Figure 5

Resume Function

This washing machine provides resume function, which could save program operation status upon unexpected outage or losing plug during washing, when power is restored, this machine could work continuously according to the original program after "Power" key is pressed.

Eccentric Protection

In the event that clothing is not uniformly distributed during dewatering, this machine will shake and scatter the clothing again and dewater them until they are distributed evenly. If the clothing hasn't been distributed evenly within the specified time, the machine won't begin dewatering in order to avoid sharply vibration, and meanwhile send "Unb" alarm. Now you shall check whether there are any wound-up or tied-off clothing in it, and arrange them again, and then select "Separate Dewatering" program to dewater them. When there is little clothing, the machine may not dewater or reach max rotation speed due to eccentric protection, then some clothing could be added into the machine to do the dewatering; in addition, it is normal that longer time is required when the washing machine distribute and shake and scatter clothing again.

Buzz Mute Function

Hold down "Tem." key and "Speed" key at the same time for 3 sec, buzzes (excluding alarm) for all programs could be canceled with "bEEP oFF" displayed on the screen; hold down above keys for 3 sec again, buzzes for all programs could be restored with "bEEP on" displayed on the screen.

Memory Program (for the type with this program)

Select "Memory" program and set each washing parameter as necessary, which will be saved after washing program finished. If the user wants to wash with the same setting, the "Memory" program could be directly selected (the program doesn't save such functions as Powerful Cleaning, Appointment, High Water Level and Load Gear).

Air Washing (for the type with drying function)

This function is applicable to get rid of bad smell from clothing. When the inner drum slowly rotates, the flowing hot air could bring smell from clothing.

Please turn on the tap of washing machine and ensure the correct connection during air washing.

If some special smells due to heavy containment have not been removed completely, please wash it by water, or send to a laundry for dry cleaning so as to reach the cleaning effect as required.

Manually Select Clothing Gear Function

When the washing machine with drying function is used to wash clothing, after the program is started, the machine will automatically weigh the clothing in the drum. If you want to cancel this function, when " " is displayed on the display area for remaining time, you could turn around the program selection knob to "AL-1", "AL-2", "AL-3", "AL-4" or "AULO", among which "AULO" indicates automatic weighing. For manual selected gear, if there is much clothing in the drum, it is recommended to select "AL-3" or "AL-4"; if there is less clothing in it, select "AL-1" or "AL-2".

If the present programs contain drying function, the gear of "AL-4" can't be selected by hand.

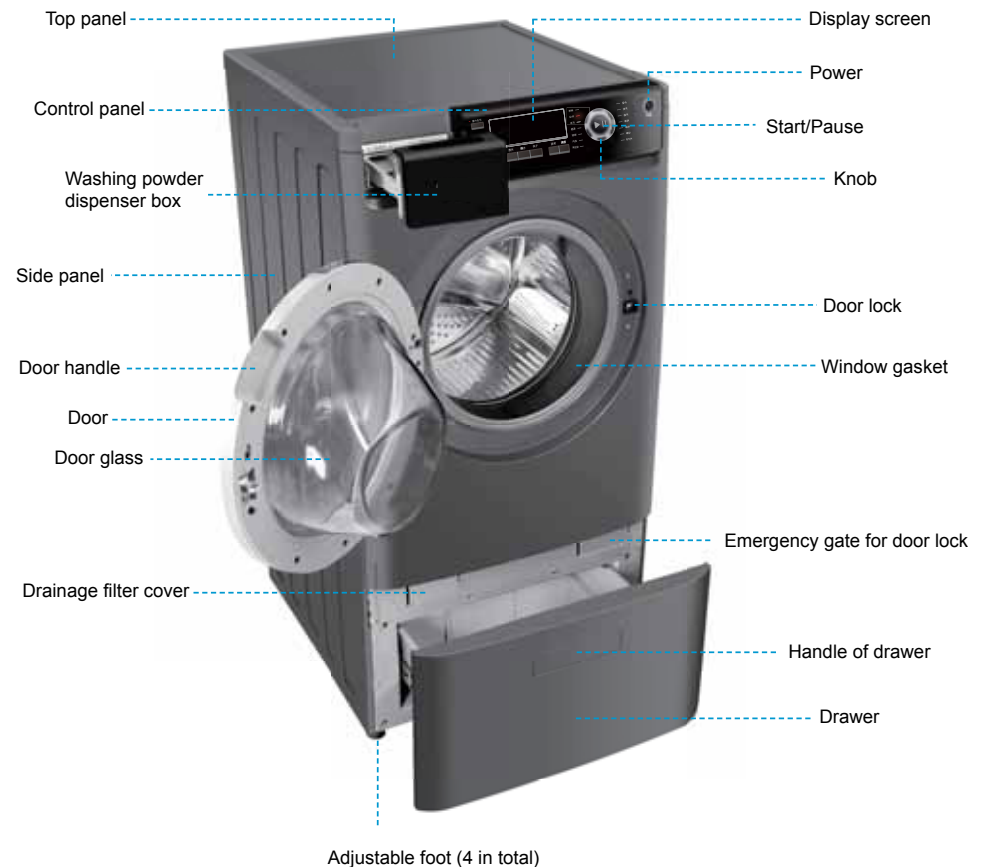
If only drying function of the present programs can be selected, and the display area for other function keys do not light, the clothing gear can't be selected by hand.

Note: for the washing machine without drying function, please see the introductions to Load keys in "Instructions to Control Panel and Program" on Page 11 for detail operation of manual selection of clothing gear.

Note:

- For energy test program of the drying type, please select "Cotton + Washing 50min + Rinsing 3 times + Spinning 6min + 60°+ Max Speed + Powerful Cleaning", and meanwhile select max load level "AL-4" by hand.
- For energy test program of the non-drying type, please select "Cotton + Washing 50min + Rinsing 3 times + Spinning 6min + 60°+ Max Speed + Powerful Cleaning", and meanwhile select max load level "L-4" by hand.

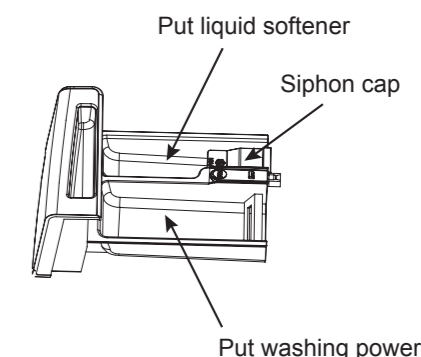
4. Name of Components (Accessories)



This picture is for reference only. Since our products are subject to further modification and expansion, the machine you purchased may have discrepancies with those in above picture in the appearance, color and functions.

11. Application of Detergent Dispenser Box

Please use foamless or low-foaming washing power suitable for full-automatic roller-type washing machine. Washing power dosage refers to the using instruction of washing power. Excessive washing power will result in heavy foaming and easy overflowing, thus impacting dissolution of washing power and bringing difficulty in poaching. The highest level of softener shall not exceed the MAX mark on the siphon cap. In order to achieve the optimal washing effect, it is recommended that softener is placed into the dispenser box after being diluted by water at the proportion of 1:1. Excessive softener will damage artificial fiber. Softener dosage refers to the using instruction of softener. After procedure running is finished, it is normal that some water is left in the dispenser box, because the water is supplementing water or condensate water in the procedure running process. The handle of the dispenser box is concave and is easy to accumulate dust, thus please use a piece of cloth to wipe and clean it.



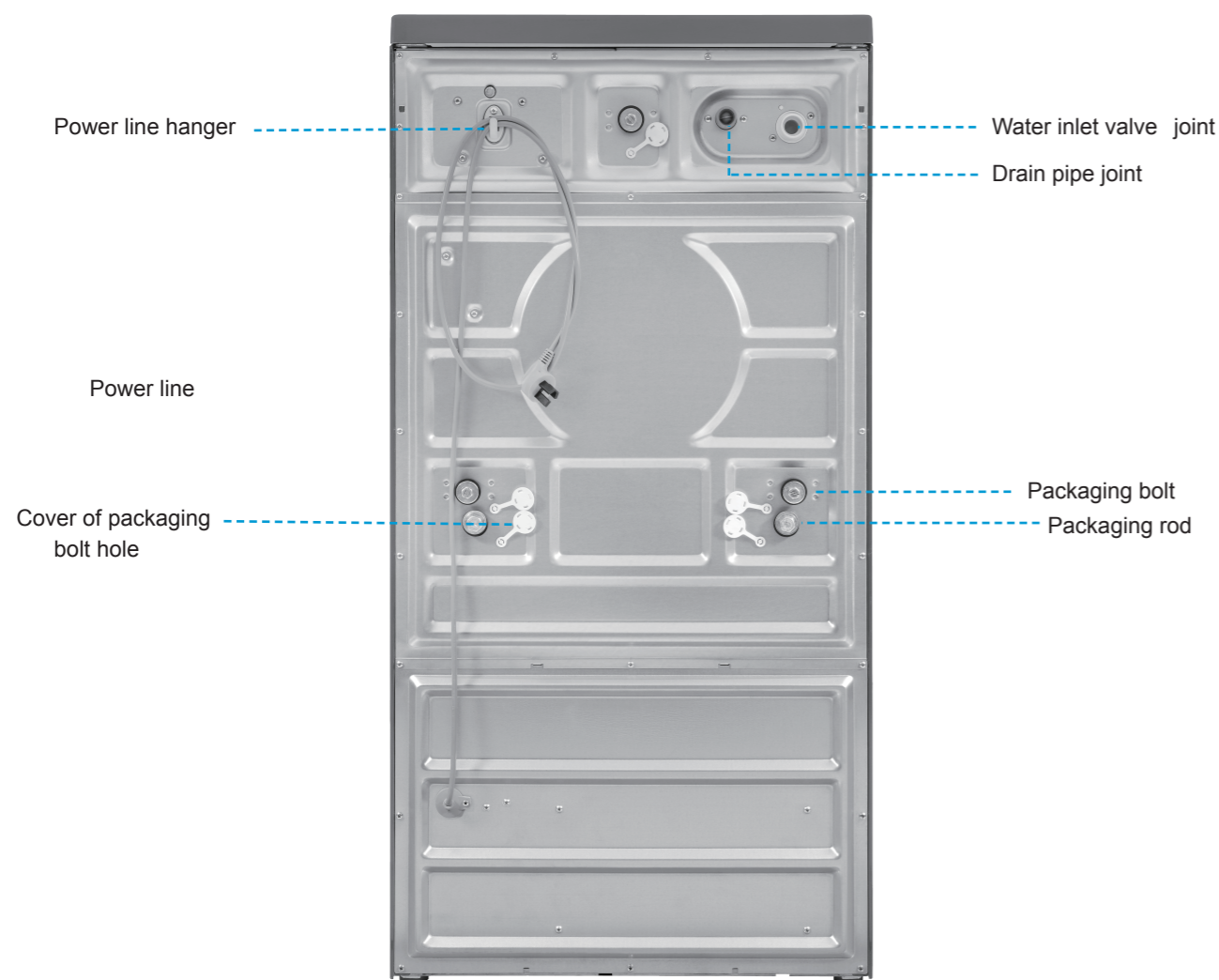
12. Other Functions

Drying (Applicable to Drying models)

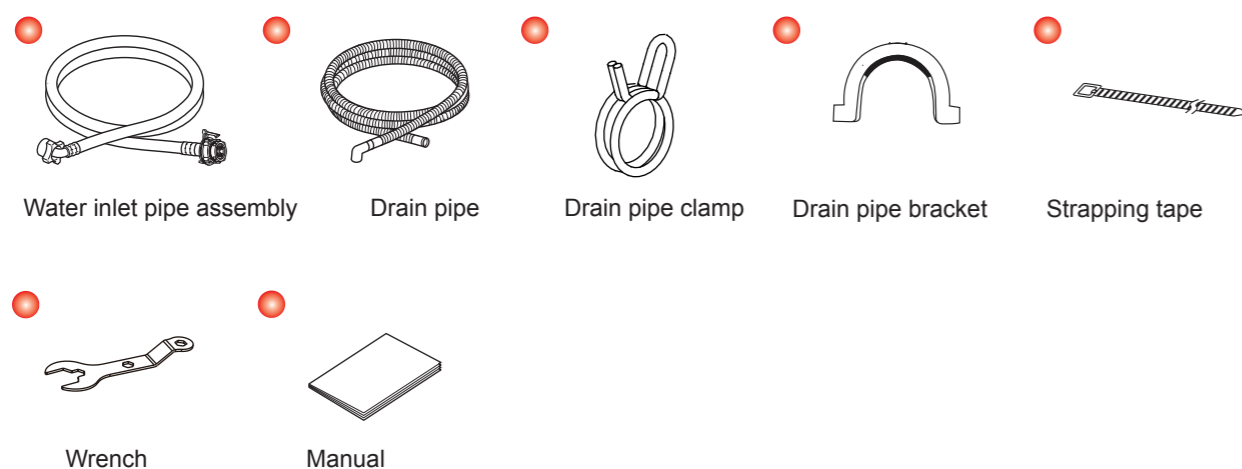
The washing machine is provided with the function of drying ramie cotton clothes, chemical fiber clothes and the like, can automatically judge the dry and wet degree of clothes and timely end the drying procedure. The function is available under the mode of accurate washing and has the following 4 modes to be selected:
Strong drying: suitable for drying ramie cotton clothes and the like.
Weak drying: suitable for drying chemical fiber and other easily damaged clothes.
Ironing: dried clothes can be directly ironed by an iron after being taken out.
Timing: users can set the drying time on their own as needed, with the selective time range of 30 minutes, 60 minutes, 90 minutes and 120 minutes. The four modes can be selected by pressing the "Drying" key.
In drying, please notice:
Whether clothes can be dried, which depends on its material. Before drying, please ensure that clothes are suitable for washing machine drying.
Before drying, please ensure that the faucet has been opened and it must have cold water.
Dehydrated clothes shall be firstly taken out from the roller and unfolded in a shaking manner, and then are put into the roller for independent drying.
If excessive clothes to be dried are put at one time, not only the drying effect is not good, but also the clothes are easy to crease, and the real drying time may be longer than the setting time.
The time of drying fewer clothes or thin clothes may be less than the setting time.
When the weak drying procedure is selected, it is normal that the running time is longer.
In order to reduce the temperature in the roller and prevent scald, cooling and temperature reduction shall be conducted in the roller before the washing machine finishes drying operation. It is normal that time displayed on the display screen remains unchanged for a certain time.

Cancel or Re-select Procedure during the Operation

If the children lock function is started, the following operation can be carried out after the children lock is unlocked.
If the operation modes (washing mode, washing/drying mode and drying mode) or washing procedures (ramie cotton, chemical fiber, etc) are required to be reset, press the "Power" key for 2 seconds to shut down the machine, and then re-press the "Power" key to start the machine, in this way, the needed operation modes and washing procedures can be reset.
Under accurate washing mode, if only the washing parameters are needed to be reset, slightly press the "Start/Pause" key to reset the washing parameters (including washing time, poaching times, dehydration time, dehydration rotation speed, but resettable parameters are required to be selected according to the real running process of the procedure) as needed, and then re-press the "Start/Pause" key to start the procedure.

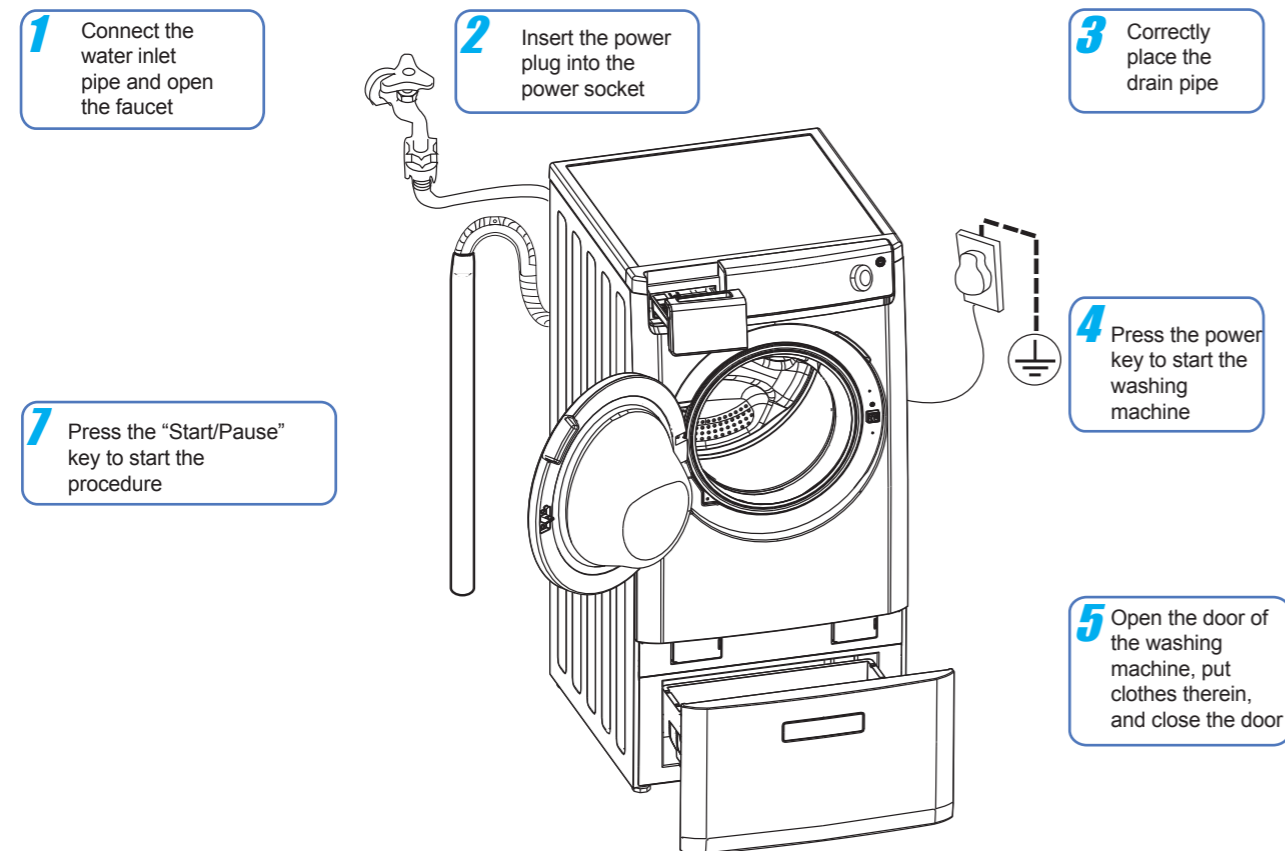


Accessories



10. Operation Steps

(Take the machine with the drying function for an example)



6 The needed procedure can be selected through the procedure selecting ring, and washing time, poaching times, dehydration time, t drying time (available for the machine with the drying function), heating temperature, dehydration speed and other functions can be adjusted through the function selecting key on the control panel.

Note: As for the machine without the drying function, please don't select the drying function (time), the load function can be selected.

5. Disassembly of Packaging and Transporting Parts and Adjustment of Feet

Disassembly of Packaging and Transporting Parts

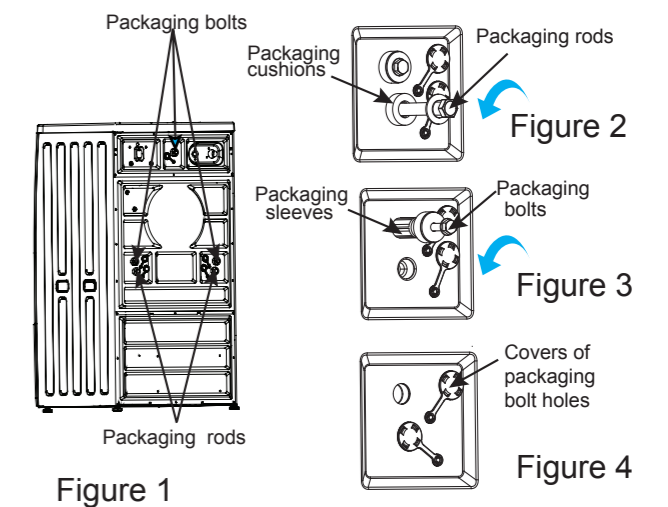
Packaging rods, packaging bolts and accessories are used for fixing the internal components of the washing machine during the transportation, and shall be completely disassembled before use.

Firstly, the two packaging rods are dismantled and then the three packaging bolts are disassembled, and the positions thereof are shown in the Figure 1.

The specific operation is as follows:

- ① Firstly the two packaging rods are disassembled from the washing machine through a screw wrench or a No. 18 wrench, and then packaging cushions are taken out. The arrow in the Figure 2 shows the disassembly direction.
- ② Next the three packaging bolts are disassembled from the washing machine through the screw wrench or a No. 13 wrench, and then packaging sleeves are taken out. The arrow in the Figure 3 shows the disassembly direction.
- ③ The covers of the packaging bolt holes are clamped into those holes left after the packaging rods and the packaging bolts are disassembled, shown as the Figure 4.

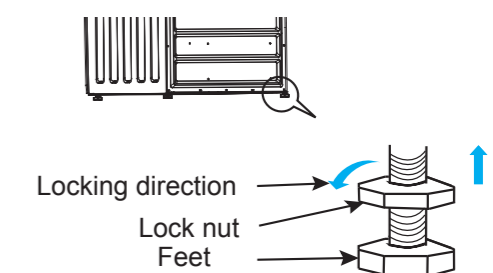
Please properly keep the disassembled packaging and transporting parts for future use in case of moving and machine transportation. Please ensure that the packaging and transportation parts are assembled prior to machine transportation.



Adjustment of Feet

When the washing machine is even, the noise and the vibration are reduced, thus please ensure that the washing machine is adjusted evenly before use.

- ① please loosen the lock nut through a wrench among those accessories.
- ② Adjust the level of the washing machine by adjusting the heights of the feet.
- ③ After the feet are evenly adjusted, the lock nut is screwed along the locking direction through the wrench.



6. Preparation before Using

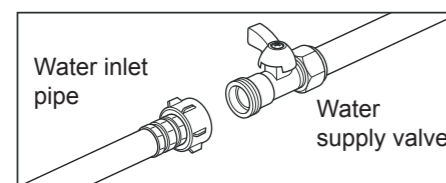
Please install and adjust the washing machine according to the Manual to ensure that you can safely and correctly use it.

Connection of the Water Inlet Pipe

Importance: Use a new water inlet pipe, not reuse a used water inlet pipe.

1. Connect the Water Supply System

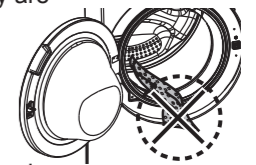
Screw the terminal nut cap of the water inlet pipe to ensure that the nut is fastened in place.
 Note: The washing machine only can be connected with a cold water supply system.



9. Preparation before Washing and Referenced Clothing Weight

Preparation before Washing

- Check whether the cleaning solution bottle and the disinfectant bottle on the table board of the washing machine needs to be added with solution. (Applicable to HWD80-1406 and HWD1406 models)
- Check whether clothes to be washed have special requirements and are suitable for machine washing and drying, to avoid the deformation and damage of the clothes.
- As for clothes spotted with much mud, please remove the dirt before washing.
- Please separate easily faded clothes from other clothes for washing.
- Please take out coins, sand, hairpins and the like from the pocket before washing.
- Tie the necktie, buckle buttons, zip the zipper and sew the seam. In order to prevent buttons of clothes from making sound, please turn clothes with buttons over before they are put into the washing machine.
- Washings shall not be excessive, please unfold and fluff up clothes before they are put into the washing machine.
- Please place small objects, easily wound and worn clothes into the washing bag for washing, poaching and dehydration, so as to avoid the damage. When in use, the washing bag is not allowed to be dehydrated independently, instead, it shall be dehydrated together with other clothes so as to avoid abnormal vibration or non-drying.



Referenced Clothing Weight

- | | | | |
|---|---|--|---|
| 
Blending work clothes (including a jacket and trousers), around 800g | 
Cotton nightclothes (including a jacket and trousers), around 300g | 
Blending shirt, around 200g | 
Cotton undershirt, around 130g |
| 
Cotton bath towel, around 300g | 
Cotton briefs, around 70g | 
Cotton socks, around 30g | 
Cotton jeans, around 600g |

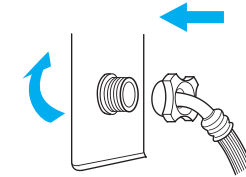
8. Program Guideline

Item	Recommended clothing	Validity of washing program for each type							
		is the corresponding program effective?	Corresponding max washing/drying capacity	Is corresponding program effective?	Corresponding max capacity	Is corresponding program effective?	Corresponding max washing/drying capacity	Is corresponding program effective?	Corresponding max capacity
		Cotton & Linen	For washing and drying of cotton & linen	✓	8kg / 5kg	✓	8kg	✓	8kg / 5kg
Chemical Fiber	For washing and drying of chemical fiber	✓	3kg / 3kg	✓	3kg	✓	3kg / 3kg	✓	3kg
Wool	For washing of machine washable wool textiles	✓	2kg / -	✓	2kg	✓	2kg / -	✓	2kg
Super soft	For washing of machine washable and delicate clothing	✓	2kg / -	✓	2kg	✓	2kg / -	✓	2kg
Down feather	For washing of machine washable and down feather	✓	2kg / -	✓	2kg	✓	2kg / -	✓	2kg
Underwear	For washing of machine washable cotton underwear	✓	2kg / -	✓	2kg	✓	2kg / -	✓	2kg
Mixture	For mixed washing of different clothing	✓	5kg / 3kg	✓	5kg	✓	5kg / 3kg	✓	5kg
Quick-washing	For washing of cotton & linen and chemical fiber which is not so dirty (note: ①)	✓	3kg / 3kg	✓	3kg	✓	3kg / 3kg	✓	3kg
Night-washing	For night washing and drying	✓	8kg / 5kg	✓	8kg	✓	8kg / 5kg	✓	8kg
Separate rinsing	For separate rinsing	✓	5kg / 4kg	✓	5kg	✓	5kg / 4kg	✓	5kg
Separate dewatering	For separate dewatering	✓	8kg / 4kg	✓	8kg	✓	8kg / 4kg	✓	8kg
Memory	For saving of individual program setting	-	- / -	✓	8kg	-	- / -	✓	8kg
High-temperature Sterilization	For washing of cotton & linen textiles which is suitable for high-temperature washing (note: ⑤)	-	- / -	✓	8kg	-	- / -	✓	8kg
Separate drying	For separate drying	✓	- / 4kg	-	-	✓	- / 4kg	-	-
Air washing	For sterilizing and removing bad smell from dry clothing (note: ③)	✓	Little	-	-	✓	Little	-	-
Self-cleaning of drum	For cleaning of inner and external drums of washing machine, add little washing powder or special detergent, do not put clothing.	✓	Don't put clothing in it	✓	Don't put clothing in it	✓	Don't put clothing in it	✓	Don't put clothing in it

- Note ① Time displayed on the quick-washing panel excludes time for clothing distribution during dewatering. When quick-washing program is selected, don't add too much washing powder or softening agent so as to avoid insufficient rinsing.
 - Note ② "-" in above table indicates that the program is not available or suitable.
 - Note ③ Air washing is a program of drying mode, clothing for sterilization and bad smell removing under this mode must have signs for drying available.
 - Note ④ for program with drying function, the corresponding max drying capacity is the maximum drying clothing allowable when "powerful drying" is selected.
 - Note ⑤ this program could sterilize Staphylococcus aureus and Escherichia coli with bacterial eradication rate of over 96%; with service time passing on, sterilization function will be weakened in some degree.
- The sterilization position is inside of the inner drum of washing machine.

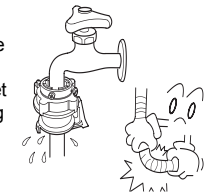
2. Connection of washing machine

- 1) Screw the nut of another end of water inlet on the intake valve joint.
- 2) Tighten the nut of water inlet, and confirm whether the nut is tightened in place or not.



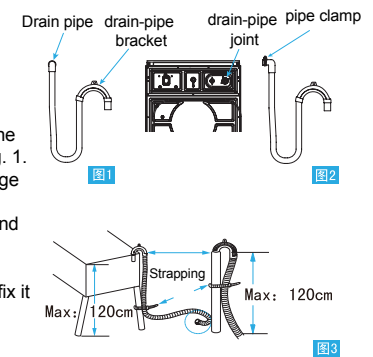
3. Check whether water inlet is connected well

- 1) Check whether the connection is firmly or not;
- 2) After the installation, turn on the tap to check whether there is water leakage;
- 3) Check and confirm whether connection between water inlet and tap is firmly connected or not before using the washing machine each time.
- 4) Do not forcefully bend water inlet.



Connection of water inlet

- 1) Take drain pipe and drain-pipe bracket out of the accessory bag, and mount the drain-pipe bracket at the end of drain pipe (with straight head), as shown in Fig. 1.
- 2) Take pipe clamp from the accessory bag, fix it by a large clamp and put on the top end of the drain pipe (with bend head), and then connect top end of drain pipe and drain-pipe joint together, and fix it by a pipe clamp, as shown in Fig. 2.
- 3) Connect drain pipe to water tank or vertical tube, and fix it firmly by a strapping delivered, as shown in Fig. 3



7. Instructions To Control Panel and Program

"Powerful Cleaning"

- Press this key to activate the function only before program is started;
- The washing time will increase accordingly after this function is selected;
- When the clothing is much dirty, it is recommended to select this function so as to achieve better washing effect.

"Appointment"

- It can set time for termination of washing program;
- Press this key under standby state, time for termination of washing program could be set, appointment time could be increased by 30 min upon once press. Available appointment time ranges from 0.5 - 24hours. After appointment function is selected, press "Start/Pause" key to start the program, then appointment time will be counted down.
- Appointment time is the time for termination of program, if operation time for washing program is longer than the setting appointment time, the appointment time will not be executed and the washing program will be directly implemented;
- After washing program is changed, this function will automatically canceled.

"High Water Level"

- Press this key under standby state, water level could be increased for washing and rinsing, so as to achieve better washing and rinsing effect.

"Door Lock"

- The icon is light after door is locked, and now the door can't be opened;
- Press "Start/Pause", if the washing machine is compliance with the unlocked conditions, the icon of door lock will extinguish, and now the door could be opened;
- After the program finished operation, if the unlocked conditions are met, the icon of door lock will extinguish automatically, and now the door could be opened.

"Child Lock"

- After the washing machine is started, in order to avoid child's improper operation or external interference to the program, hold down "Powerful Cleaning" + "High Water Level" keys together for 3 sec during operation to start Child Lock function; conduct the above operation again, the Child Lock function could be canceled;
- After Child Lock function is started, all keys are ineffective except for Power key;
- After Child Lock function is started, if outage occurs during program operation, Child Lock function will not be canceled automatically, which still needs to be released by hand after the machine is re-started.

Program Selection Key

- Turning the knob to select a suitable washing program;
- Turning the knob to set the operational parameters of washing, rinsing, dewatering and drying, as well as appointment time, etc.;
- For the type with drying function, adjust clothing gear by manually turning the knob during automatic weighing. See Introduction on Page 16 for details.

"Start/Pause"

- After the program is selected, press this key, the program will automatically run;
- When the program is operating, press this key, the program could be paused. If the unlock conditions are met, the door is unlocked and could be opened. Now, user could add some clothing as necessary. Press the key again, the paused program could continue its operation.

"Power Supply"

- Press this key under shutdown state, the washing machine will start and enter into standby state;
- When the washing machine is under starting state, hold down this key for 3sec, the machine will shut down power and enter into shutdown state.

"Speed"

- Press this key under the standby or pause state (the dewatering is not completed), the max rotation speed could be selected during dewatering;
- The max rotation speed of dewatering for each program is different from each other;
- When the display area of rotation speed above this key on the screen is not light, it indicates no dewatering.

"Washing"

- Press this key under the standby or pause state (the washing is not completed), major washing time could be set (excluding intake time and heating time).
- Select suitable washing time according to the dirty degree of clothing.
- Washing time available for each program is different from each other;
- When the washing display area above this key on the screen is not light, it indicates no washing.

"Rinsing"

- Press this key under the standby or pause state (the final rinsing is not began), rinsing times could be selected;
- When the rinsing display area above this key on the screen is not light, it indicates no rinsing.
- When temperature is set as 60°C or above, the least rinsing time is three.

"Dewatering"

- Press this key under the standby or pause state (the dewatering is not completed), the high-speed whirling time for last whirling could be selected;
- Max dewatering time available for each program is different from each other;
- When the dewatering display area above this key on the screen is not light, it indicates no dewatering.

"Drying"

Note: corresponding to the type with drying function, it is the Drying key.

- Press "Drying" key under the standby state, the different drying mode or time could be selected according to the clothing to be dried;
- Drying mode or time available for each program is different from each other;
- Max drying capacity corresponding to the different programs is also different. See Program Guideline on Page 12 for the details; It is also applicable to the type without drying function.

"Load"

Note: corresponding to the type without drying function, it is the Load key.

- Press "Load" key under the standby state, the clothing gear could be adjusted by hand according to the quantity of clothing in the drum, so as to save time, water and power;
- When there is much clothing (over half drum), it is recommended to select "L-3" or "L-4"; When there is less clothing (less than half drum), it is recommended to select "L-1" or "L-2"; "-" indicates automatic weighing.
- Load gear range available for each program is different from each other;
- It is also applicable to the type with drying function.

"Temperature"

- Press this key under the standby state, temperature for water heating could be selected during washing;
- Max heating temperature available for each program is different from each other;
- When the temperature display area above this key on the screen is not light, it indicates no heating.

Note: whether keys on the control panel could be selected depends on the current program in operation.

Note: the picture of control panel is the washing machine without the drying function. See Program Guideline on Page 12 for the selectable programs of the type with drying function.