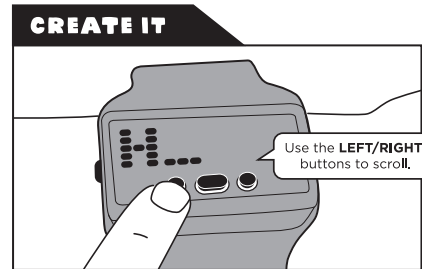
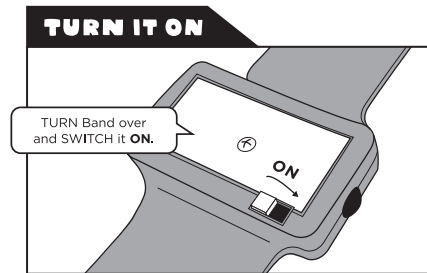
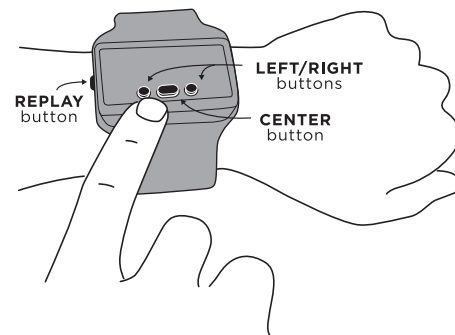
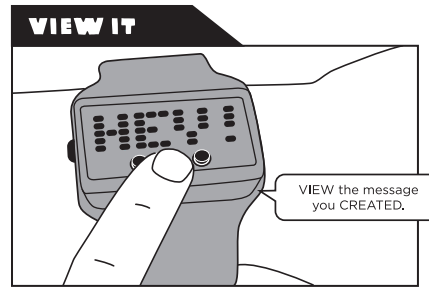


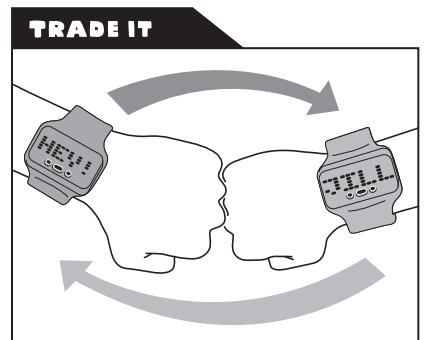
Hallmark
TEXT BANDS
INSTRUCTIONS



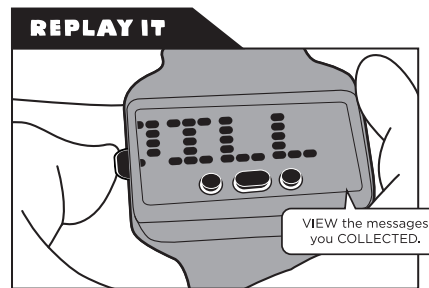
- HOLD DOWN the **CENTER** button until cursor (---) starts blinking.
- Use the **LEFT/RIGHT** buttons to scroll through characters.
- Find the character you want. PRESS the **CENTER** button to select.
- When finished, HOLD **CENTER** button until message scrolls.



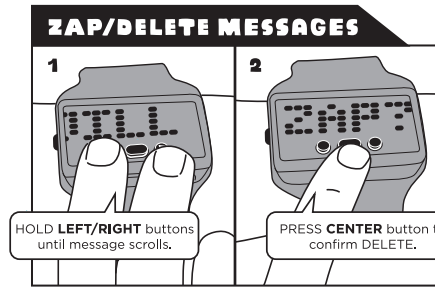
- PRESS the **CENTER** button to view the message you created.
- Includes bad word filter.



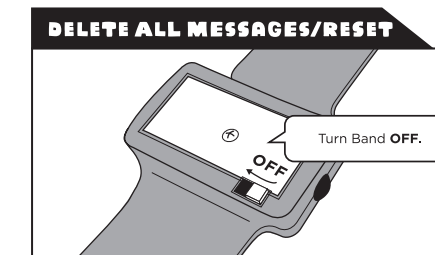
After you create a message **FIST BUMP**, **HI-5**, or **SHAKE HANDS** with someone wearing a Text Band. Your message will scroll across their Text Band. Their message will scroll across your Text Band.



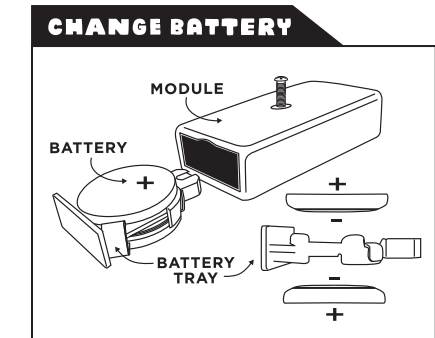
- PRESS **REPLAY** to view your collected messages.
- MESSAGE CAPACITY: Holds 24 messages. Once full, oldest message will delete.



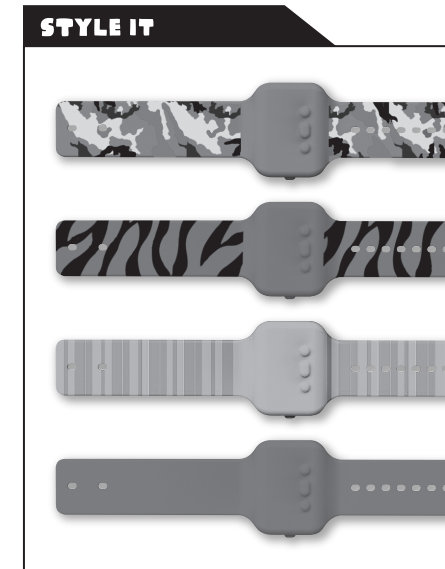
- HOLD **LEFT/RIGHT** buttons until you see the last message.
- PRESS **CENTER** button to zap and delete message. (----) is displayed. PRESS any other button to **CANCEL**.



Turning band **OFF** deletes all messages. Turn Band over and **SWITCH** it **OFF**. Band will **RESET** when turned back **ON**. Module resets by turning off and on.



- REMOVE **MODULE** from Band.
 - LOOSEN center screw.
 - SLIDE **BATTERY TRAY** out.
 - REMOVE old batteries.
 - INSERT new batteries.
 - REINSERT battery tray/display into Band.
- "HELLO" should appear if loaded properly.



Additional Color Bands sold separately.

Learn to play Text Bands games at HALLMARK.COM/TEXTBANDS

BATTERY INFORMATION:
Requires two (2) CR2032 button-cell batteries (included).

CAUTION: DO NOT MIX OLD AND NEW OR DIFFERENT TYPES OF BATTERIES.

Please recycle or dispose of batteries appropriately. This product is not waterproof—keep away from water or heavy moisture.

This Class B digital apparatus complies with Canadian ICES-003. Cet appareil numérique de la classe B est conforme à la norme NMB-003 du Canada. This device complies with Industry Canada Licence-exempt RSS-210.

This device complies with Part 15 of the FCC Rules. Operation is subject to the following two conditions:
(1) this device may not cause harmful interference, and
(2) this device must accept any interference received, including interference that may cause undesired operation.

CAUTION: Changes or modifications to this unit not expressly approved by the party responsible for compliance could void the user's authority to operate the equipment.

NOTE: This equipment has been tested and found to comply with the limits for a Class B digital device, pursuant to Part 15 of the FCC Rules. These limits are designed to provide reasonable protection against harmful interference in a residential installation. This equipment generates, uses and can radiate radio frequency energy and, if not installed and used in accordance with the instructions, may cause harmful interference to radio communications. However, there is no guarantee that interference will not occur in a particular installation. If this equipment does cause harmful interference to radio or television reception, which can be determined by turning the equipment off and on, the user is encouraged to try to correct the interference by one or more of the following measures:

- Reorient or relocate the receiving antenna.
- Increase the separation between the equipment and receiver.
- Connect the equipment into an outlet on a circuit different from that to which the receiver is connected.
- Consult the dealer or an experienced radio TV / technician for help.

U.S. Patents Pending
© Hallmark Licensing, Inc.
23-799-2260