

# Musical Tree-Lighting Snowman

VENDOR TO STRIP IN: UPC,  
 COUNTRY OF ORIGIN-FUTURA MEDIUM CONDENSED AT 7 PTS  
 DATE CODE-FUTURA MEDIUM CONDENSED AT 7 PTS  
 PRICE-FUTURA MEDIUM CONDENSED AT 7 PTS  
 VENDOR RESPONSIBLE FOR UPC READABILITY  
 VENDOR RESPONSIBLE FOR ALL TRAPPING

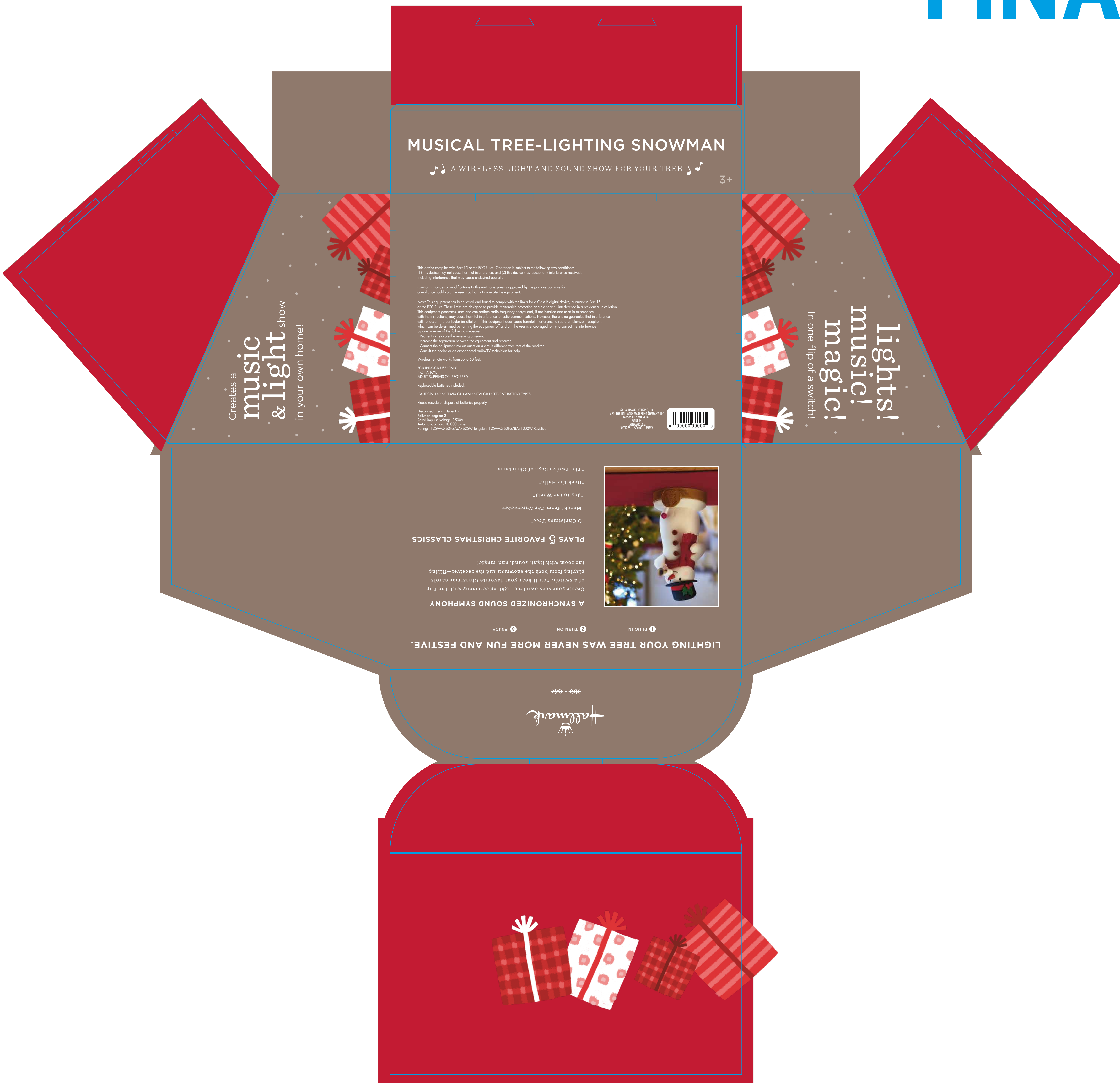
1XKT1725U TRAY FRONT PROCESS COLORS

# FINAL ART

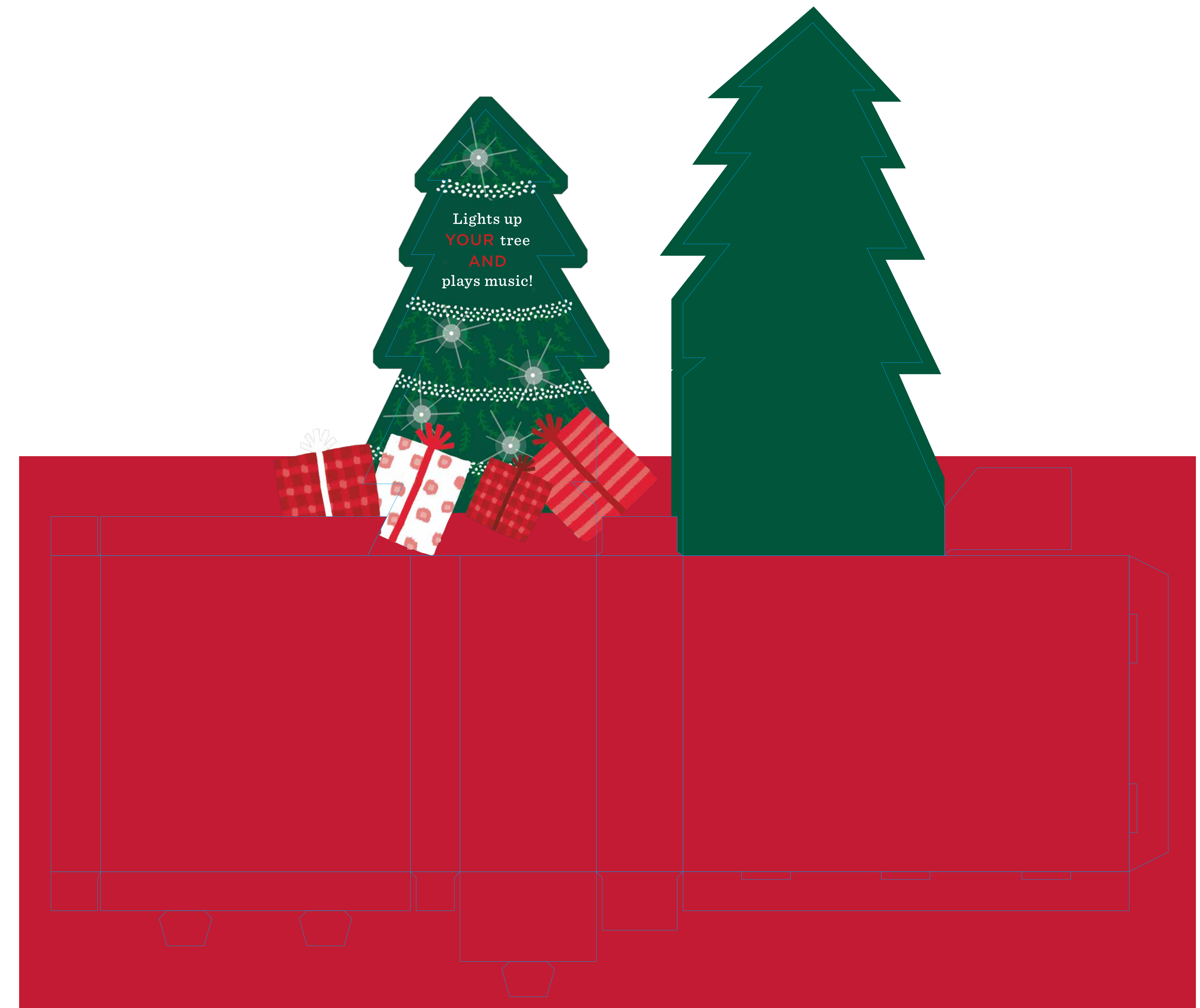
1XKT1725U CALLOUT LABEL FRONT PROCESS COLORS



APPROX. SIZE 1.35" DIAMETER



1XKT1725U INSERT(STAGE) FRONT PROCESS COLORS



This device complies with Part 15 of the FCC Rules. Operation is subject to the following two conditions:  
(1) this device may not cause harmful interference, and (2) this device must accept any interference received,  
including interference that may cause undesired operation.

Caution: Changes or modifications to this unit not expressly approved by the party responsible for  
compliance could void the user's authority to operate the equipment.

Note: This equipment has been tested and found to comply with the limits for a Class B digital device, pursuant to Part 15  
of the FCC Rules. These limits are designed to provide reasonable protection against harmful interference in a residential installation.  
This equipment generates, uses and can radiate radio frequency energy and, if not installed and used in accordance  
with the instructions, may cause harmful interference to radio communications. However, there is no guarantee that interference  
will not occur in a particular installation. If this equipment does cause harmful interference to radio or television reception,  
which can be determined by turning the equipment off and on, the user is encouraged to try to correct the interference  
by one or more of the following measures:

- Reorient or relocate the receiving antenna.
- Increase the separation between the equipment and receiver.
- Connect the equipment into an outlet on a circuit different from that of the receiver.
- Consult the dealer or an experienced radio/TV technician for help.

Wireless remote works from up to 50 feet.

FOR INDOOR USE ONLY.  
NOT A TOY.  
ADULT SUPERVISION REQUIRED.

Replaceable batteries included.

CAUTION: DO NOT MIX OLD AND NEW OR DIFFERENT BATTERY TYPES.

Please recycle or dispose of batteries properly.

Disconnect means: Type 1B  
Pollution degree: 2  
Rated impulse voltage: 1500V  
Automatic action: 10,000 cycles  
Ratings: 125VAC/60Hz/5A/625W Tungsten, 125VAC/60Hz/8A/1000W Resistive

© HALLMARK LICENSING, LLC  
MFD. FOR HALLMARK MARKETING COMPANY, LLC  
KANSAS CITY, MO 64141  
MADE IN  
HALLMARK.COM  
XKT1725 S00.00 MMY

