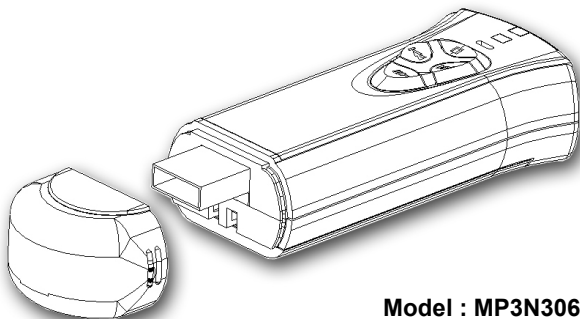


User's Manual

XDRUM MP3 Drive



Model : MP3N306

 **Hanbit**TM
Value solution

HANBIT Electronics Co., Ltd.
<http://www.hbe.co.kr>

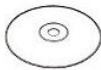
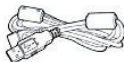
♣ Safety Precautions

- ▶ When using the device, avoid the following places

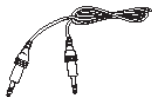
Places with too much humidity and dirt / places with direct sunlight / near fire or heating appliances/places with too much vibration / near things with magnetic properties / too cold or hot places

- ▶ Do not put metals or flammable foreign materials inside the player.
- ▶ Do not attempt to disassemble, repair, or modify.
- ▶ Press one button at a time. Do not press two or more buttons at the same time.
- ▶ When cleaning, do not spray water on the player. Gently wipe with a dry cloth. Never use chemicals or detergent that deform and discolor the device.
- ▶ When the player is soaked in water, take batteries off and contact the A/S center of our head office. If you use the player when it is wet, it will lead to malfunction.
- ▶ If you fall onto something or someone, while walking with the player hung around your neck, or in your pocket, you or the person you fell onto may get bruises or suffer a fracture. Please, mind that in mind.

♣ Components -----

**Earphone****Manual****CD Driver****USB Extension Cable****Extra Cap****Neck Strap**

♣ Option -----

**Audio Cable****AAA Battery****Lithium ion Battery**

♣ Accessories subject to change without notice and may vary from image shown.

▶ Safety Precautions	2
▶ Components / Option	3
▶ Table of Contents	4

1. Introduction

1.1 What is MP3	5
1.2 What is an MP3 Player?	5
1.3 Names and Composition	6~7
1.4 Functions and Details	8

2. How to Use MP3 Player

2.1 Installing the Driver for MP3 Player	9~14
2.2 Transmitting Files Between PC and Player	15
2.3 Changing the Mode of MP3 Player	17
2.4 Listening to Music with MP3 Player	18
2.5 Learning Languages with MP3 Player	22
2.6 Recording with MP3 Player	25
2.7 Write protection function and Hold switch	28
2.8 Recharge MP3 Player	29
2.9 Depart MP3 Player from PC	30
2.10 LED reference	31

3. Customer Support and Firmware Upgrade

36

4. Troubleshooting

37

5. Cautions

38

1. Introduction

1.1 What Is MP3?

MP3, a short for 'MPEG Audio Layer-3', is one of file extensions such as *.HWP, *.TXT. With MP3 technologies, a minimum of 150 songs can be saved on one blank CD of 650M.

1.2 What Is an MP3 Player

With an MP3 player, you can save music you like from your computer and listen to it whenever you want; whether on the bus or subway or while working out.

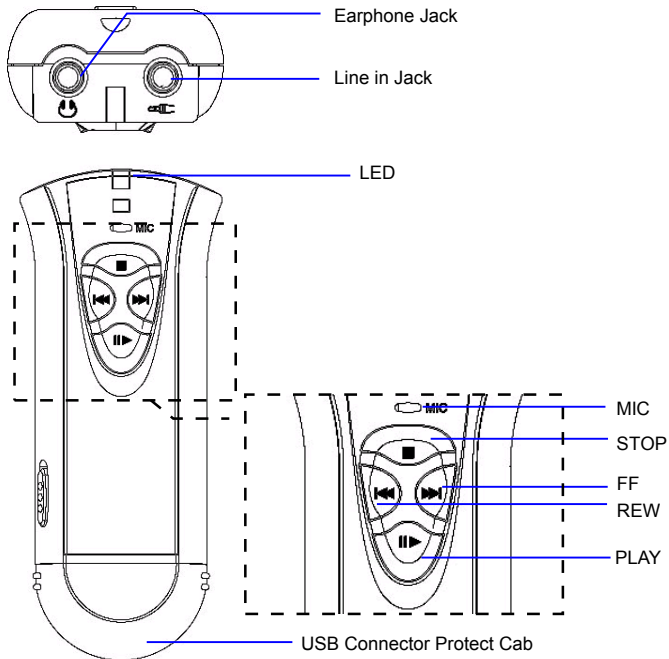
This means you can save music files from the Internet on the memory of an MP3 player, which plays them whenever and wherever you want. MP3 players, unlike small cassette players such as Walkman, are small and light. Numbers of songs that can be saved on an MP3 player vary according to the memory, but more than a cassette tape can contain.

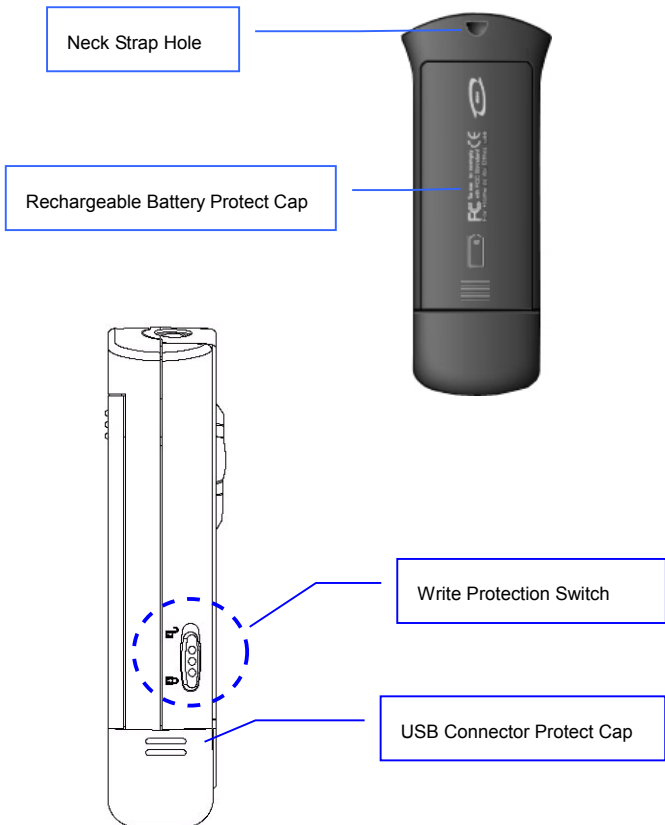
At the same time, MP3 players can save PC files or transmit data like portable disks. MP3 players offer a variety of merits. You can use MP3 players if you have a computer (regardless of type or brand) with basic functionality. Even when batteries are run out or when the power is turned off, all data saved on the memory, including music files, is not lost. Our MP3 players are multi-functional device that not only play music but also with storage functionality. Our MP3 players are so user-friendly that even beginners can easily learn how to use them. With our MP3 players, it is very easy to save data and to alter or move MP3 music files.

You can listen to music of your choice and handle data of high volume without difficulty.

Our Hanbit MP3 players also feature voice recording, five-mode (classis/ jazz/ pop/ rock/ normal) equalizer (EQ), and language exercise (selected block repetition / five-level speed control).

1.3 Names and Composition





1.4 Functions and Details

- ▶ Music File : *.MP3, *.WMA, *.ASF file compatible
- ▶ Capacity Range : 16Mbyte ~ 512Mbyte
- ▶ Portable Data Storage : Music file and Data Storage and Transporting
- ▶ Equalizer Function : CLASSIC / JAZZ / POP / ROCK / NORMAL
- ▶ Language Study : Section Repeat / 5step Speed Control (Slow resume)
- ▶ Recording : Voice recording(MIC) / MP3 file recording from external Audio instrument by using audio cable
- ▶ Frequency Range : 20Hz~20KHz
- ▶ Bit rate : 52Kbps ~ 192Kbps
- ▶ Earphone Output : 6mW(L) + 6mW(R) at Max. Volume
- ▶ S/N Ratio : 90dB
- ▶ Auto Sleep Mode : Auto Power saving mode
- ▶ Connect and Music file Download : by USB connect
- ▶ USB Download speed : Approx. 6.4 Mbps
- ▶ Display : Color LED
- ▶ Peripherals : USB extention cable, Earphone, Driver CD, Extra Cap, Neck Strap, Audio Cable, AAA Battery, Lithium ion Battery, Manual
- ▶ Dimension : 31.6(W) x 88.4(L) x 19.1(D)mm
- ▶ Weight : 54 g(Except Battery)
- ▶ Playing time : AAA Battery : Approx. 8hours
Lithium ion Battery : Approx. 14hours
- ▶ Power : Lithium ion Battery(USB port rechargeable) OR AAA Battery
- ▶ Operate System : Windows2000/XP/Me, Linux OS 2.4 or Above, Mac OS 9.0 or Above, Windows98(Only Windows98 need to install driver)

2. How to Use an MP3 Player

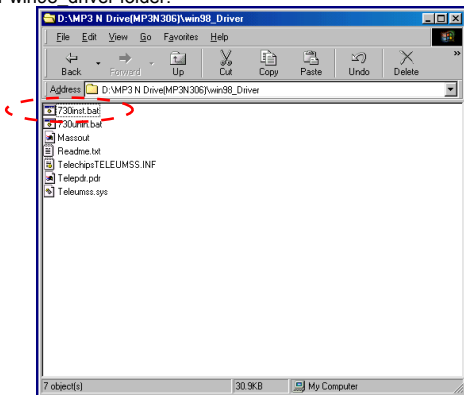
2.1 Installing the Driver for MP3 Player (on Windows98)

A. If your computer's OS is Windows 98, you have to install this driver for your PC to read MP3. (For Windows2000 and Windows XP, no need to install the driver)

For PCs with the USB memory, you do not have to install the driver. But you may, if you want, reinstall the driver. Make sure the MP3 player is not connected to your PC while reinstalling.

B. Insert the 'Driver CD', one of things that are provided together with the device, to your PC's CD-ROM Drive.

C. If you insert the CD, and open the window of CD Rom Drive, you will see a 'MP3 N Drive' folder. If you click open the folder, you will see '730inst.bat' file under win98 driver folder.



D. If you execute '730inst.bat' file, the following instruction will be executed, starting the installation.

```
ECHO OFF
CLS

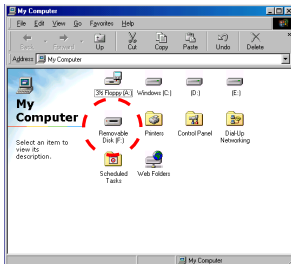
del %windir%\Inf\wother\TelechipsTELEMSS.INF > NUL
del %windir%\Inf\wother\*TELEMSS.*
del %windir%\Inf\*TELEMSS.*
del %windir%\Inf\wother\TELEMSS.INF > NUL
del %windir%\System\iosubsys\TELEPDR.PDR > NUL
del %windir%\System32\Drivers\TELEMSS.sys > NUL
%windir%\regedit.exe -s massout. > NUL

copy TelechipsTELEMSS.INF %windir%\Inf\wother > NUL
copy TELEPDR.PDR %windir%\System\iosubsys > NUL
copy TELEMSS.sys %windir%\System32\Drivers > NUL

CLS
ECHO //
ECHO // Installation Complete
ECHO // REBOOT Your Computer
```

E. When the installation is completed after the instruction is executed, reboot the computer to end the installation.

F. When the MP3 player is connected to the PC's USB port, 'My Computer' -> **Portable Disk** drive (folder) will be created.

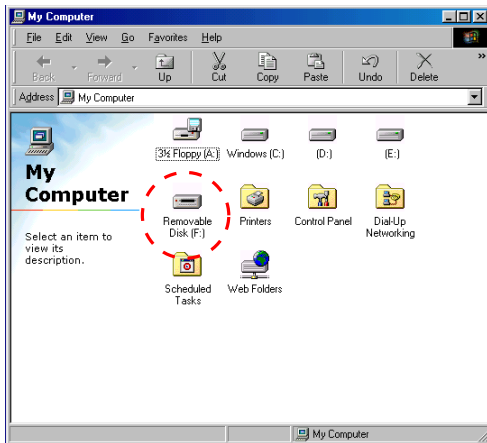


G. Now, it is checked that the installation of the driver is successful. Through

this folder, you can save music files and listen to them. You can use the player as a portable data storage device.

H. Even if think you followed the instructions exactly, the driver (S/W), in some cases, may not be installed in a right way.

This may happen when you did not follow the exact order or wrongly understood the instructions. In these cases, you need to reinstall the driver (S/W), following the instructions as explained above. Or, you may reinstall the driver in 'device manager'. You have to reboot the computer when the installation is complete.



I. The following is how to install the driver in 'device manager'. Insert the installation CD into the CD-ROM drive and connect the MP3 player to the PC's

USB port, and you will see the following window.



Click [Next] button.

J. The window like the one below will appear.



Click [Next] button.

K. The window like the one below will appear.

Select the location you want to search as seen below and select Win98_driver through <Browse...>. [When installing win98_driver, using CD, select <CD-

ROM drive>. If downloaded from the Internet, you can specify the directory through < Browse...>]



After selecting the location, click [Next] button.

L. The window like the one below will appear.



M. When you see the window like the one above, click [Next].
If you see the message reading 'the driver is not found', this is because you did not specify the location of the driver in the previous step. In this case, click [Back]

button to go back to the previous step. Specify the accurate location of the driver once again to proceed to the next.



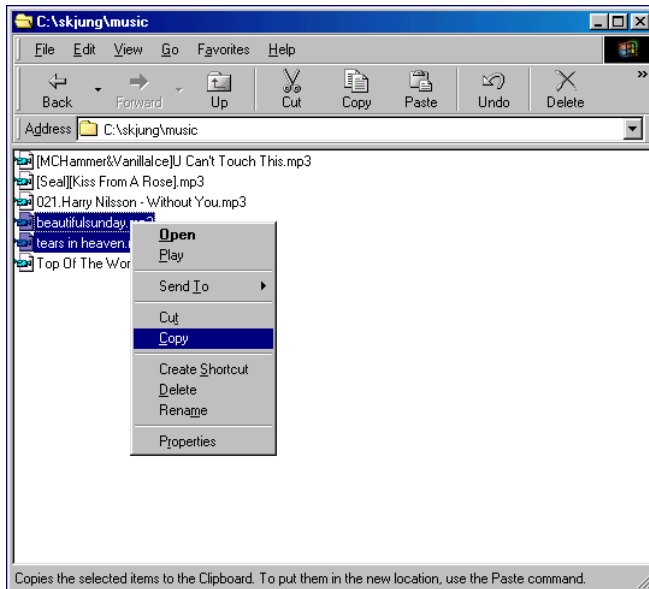
N. When the window like the one above pops up, the driver is successfully installed. Click the [Finish] button to complete the installation.

2.2 File transmission between the PC and the player

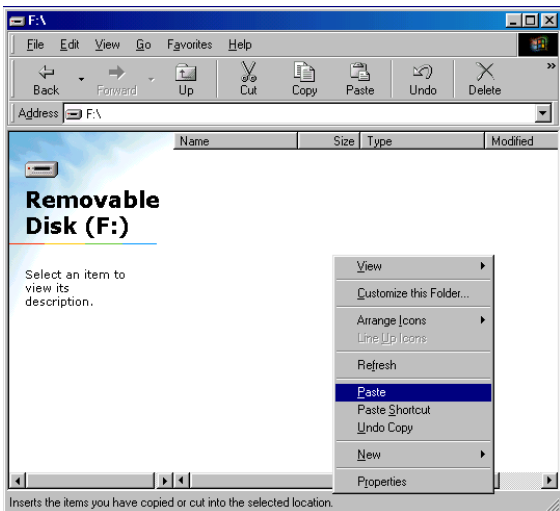
It is very simple to transmit files between the PC and the player. PCs read a MP3 player as a mass storage.

Therefore, you only need to save a file you want or open it, after finding out this portable storage in Windows Context menu.

By doing so, you can use this MP3 player along with the USB drive.

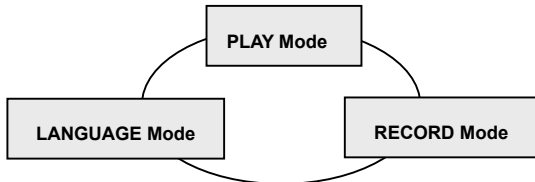


- ▶ The following is a brief explanation of how to move MP3 files in the PC to the portable disks.

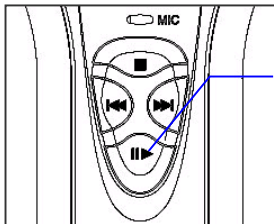


2.3 Changing the Mode of MP3 Player

- A. MP3 player features the following three modes.
- ▶ **PLAY** Mode
 - ▶ **LANGUAGE** Mode
 - ▶ **RECORD** Mode



B. Changing the Mode



- **Changing the Mode - Press PLAY 2 Sec. when Player Stop**

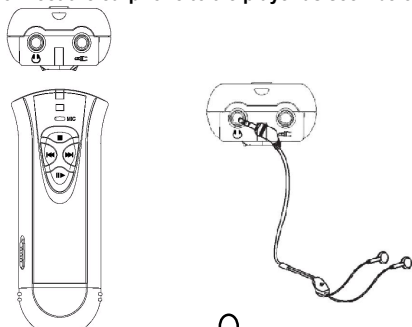
You can change the mode in STOP mode.

Press **PLAY** button for two seconds or so to shift to **LANGUAGE** mode. Press **PLAY** button for two seconds or so once again to shift to **RECORD** mode. Another press of the **PLAY** button for longer than two seconds will shift to **PLAY** mode. [Refer to 2.10]

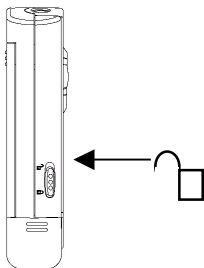
As seen in the above picture, PLAY mode changes in the order of **PLAY->LANGUAGE->RECORD->PLAY**.

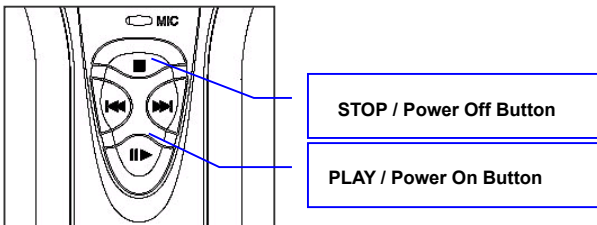
2.4 Listening to Music with the MP3 Player

- A. Connect the earphone to the player as seen below.

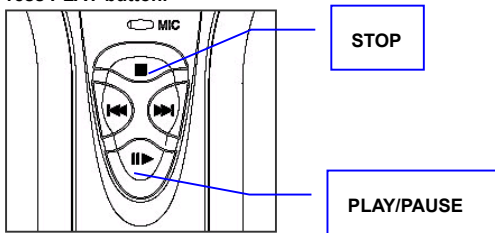


- B. Shift the hold switch to ()



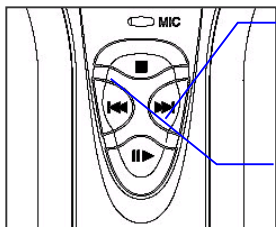
C. Turn the power on

Press the PLAY button for long to turn the power on with the LED flickering. Press the STOP button for three seconds or so in STOP mode, and the LED will be off as the power is turned off. You can see whether power is on or off by looking at the LED [Refer to 2.10]

D. Press PLAY button.

You can either play or stop the player only when the power is on. Lightly press the PLAY button to play music. If you repress the PLAY button while music is playing, it shifts to PAUSE mode. Press the PLAY button once again to play the music. If you press STOP button while in PLAY mode, music will stop.

E. Adjusting the Volume



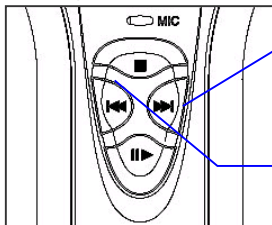
FF Light Press : Volume Up

REW Light Press : Volume Down

You can either increase or decrease the volume while in PLAY mode by lightly pressing FF(">>") button or REW("<<").

Note: For Hanbit MP3 player, how to press the four buttons determines functions. Please, keep in mind that the length of button-pressing determines the function while using our product.

F. Selecting musical pieces



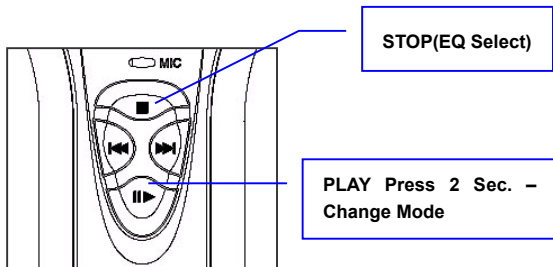
FF 2Sec. Press : Next file

REW 2Sec. Press : Previous file

Unlike with volume adjustment, you can select musical pieces by ">>" or "<<" buttons for two seconds or so. If you press either of the two buttons for long, the previous or next piece will be played.

Selecting musical pieces in STOP mode are the same as in PLAY mode. Select a piece in STOP mode and press PLAY button to listen to music from the piece you selected and on.

G. Selecting EQ



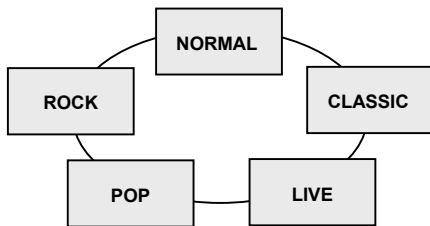
To select the EQ, you have to change the mode to EQ, first. Under EQ mode, you can change the mode in PLAY mode.

To shift to EQ mode, press PLAY button for two seconds or so while in PLAY.

You can check that the device is in EQ mode through the LED light. **[Refer to 2.10]**

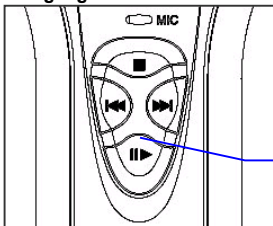
In EQ mode, press 'EQ select' (STOP) button to change the EQ. EQ will be changed as seen in the below picture, and you will see the mode selected through the LED light. **[Refer to 2.10]**

To return to PLAY mode, press the PLAY button for longer than two seconds.



2.5 Learning Languages with MP3 Player

A. Shifting to Language Mode

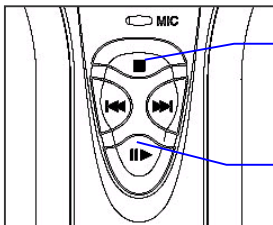


PLAY(Mode Change)

Refer to clause 2 and 3 of page 17, regarding language mode selection.

Save language files on the player in RECORD mode, and press the PLAY button for two seconds or so in PLAY mode to shift to LANGUAGE mode. [Refer to 2.10 of page 33]

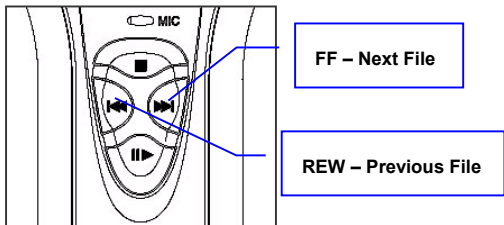
B. Play / Pause / Stop in LANGUAGE mode.



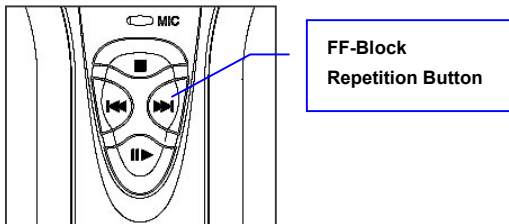
STOP

PLAY / PAUSE

Instructions with PLAY mode are exactly the same as with Language mode. If you lightly press the PLAY button, the file will be played. Another press of the PLAY button will pause the play. Press the PLAY button once again to shift to PLAY mode. Press the STOP button for two seconds or so to stop the playing of the music.

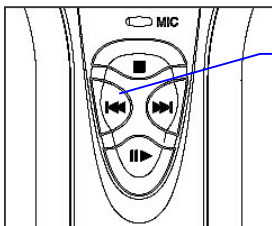
C. Selecting Files in LANGUAGE Mode

Instructions for selection in LANGUAGE mode are the same as in PLAY mode: Press ">>" or "<<" for two seconds or so to select a file. If pressing FF or REW button while in PLAY mode, the previous or the next files will be selected and played.

D. Block Repetition in LANGUAGE Mode (A - B)

To specify the starting point of block repetition, lightly press the FF button in PLAY mode. Lightly repress the FF button at the point you want to end the block repetition to specify the block you want to repeatedly play. When you want to redo the selection, press the FF button to return to the previous PLAY mode.

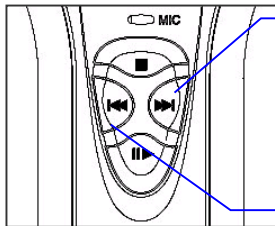
E. Speed Control in LANGUAGE Mode



• Speed Control – Press REW lightly on Play

You can control play speed in LANGUAGE mode by pressing the REW button. There are five speed levels; one press each increases the speed (first press- the lowest, forth press-the highest, and fifth press-back to normal)

F. Volume Control in LANGUAGE Mode



FF – Volume Up

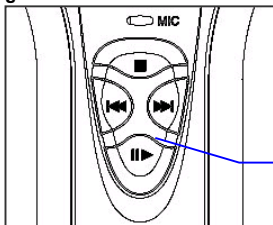
REW – Volume Down

If you wish to adjust volume while in Language mode, you first need to change the mode to Volume. To adjust volume in Language mode, hold down the Play button while in Play.

To increase or decrease volume, press FF (“>>”) button or REW (“<<”). To return to Language mode, hold down the PLAY button until it switches.

2.6 Recording

A. Switching to Record Mode

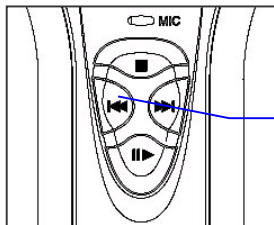


PLAY – Mode Change

How to switch Record mode is explained in sections 2.3 of page 17

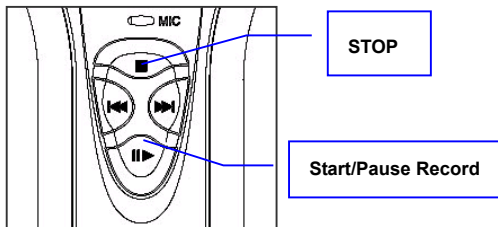
Press Play for a couple of seconds while stopped in Language mode to switch to Record mode. You can see whether the device is in Record mode by looking at the LED light. [Refer to 2.10]

B. Selecting Input Source in Record Mode (MIC or LINE IN)

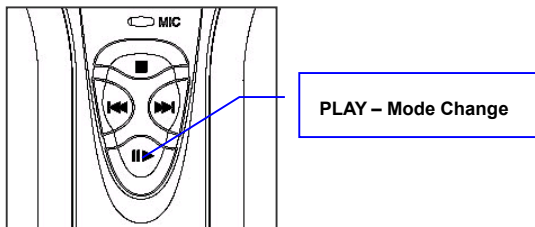


REW-Recording
Source Select

There are two input sources: built-in 'MIC' and 'Line in'. In Record mode, it is set to 'MIC' recording. Press the 'Rew' button to switch to 'Line in' recording. To return to 'MIC' recording, press 'Rew' once again. [Refer to 2.10]

C. Recording in Record Mode

Start recording by pressing the Play button. Pressing Play while recording will pause the recording. Press Play once again to resume recording. To end recording, press Stop.

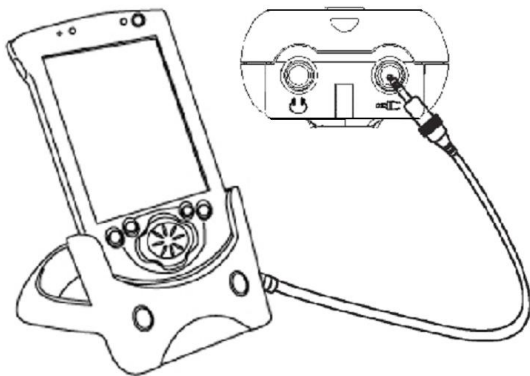
D. Switching from Record to Play Mode**How to switch from Record to Play mode is explained in sections 2 and 3**

Hold down Play for a couple of seconds while stopped in Record mode to switch to Play mode. You can see if the player is now in Play mode through the LED light. [Refer to 2.9]

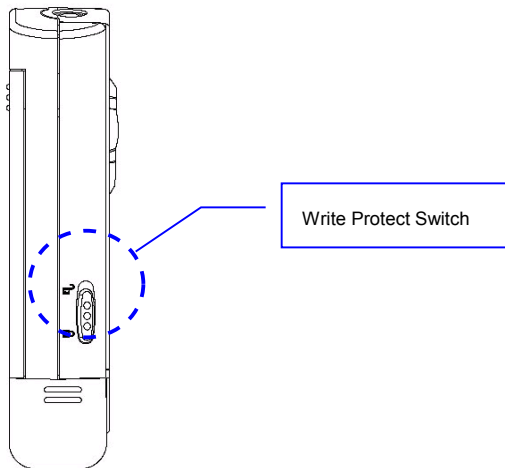
E. Reviewing Recorded Files

Data recorded following the instructions above is saved as “*.mp3” to the built-in memory and the names of files are automatically saved as “REC_xxx.mp3”.

F. Connecting LINE IN While in Recording



2.7 The MP3 Player's Data Write-Protect and Hold Key

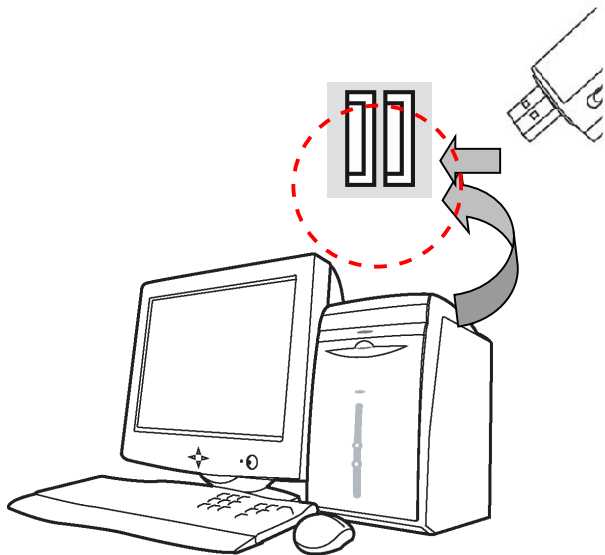


Our MP3 Players feature write-protect as do floppy disks. With the write-protection, users can only read data and cannot save, alter, or re-format the data. This function is to protect important files.

The Hold button is used for the write-protect function. When Hold is turned on, other buttons - Play, FF, Rew, Stop MP3 – cannot be activated.

2.8 Recharging the MP3 Player

The MP3 player offers the convenience of having built-in batteries. The batteries are recharged through the USB port. It is very simple to recharge the batteries. You simply need to connect the player to the USB port. You can check the status of recharging through the LED light. [Recharging the MP3 Player]



2.9 Disconnecting the MP3 Player from the COMPUTER

When disconnecting the player from the COMPUTER after downloading data or music files, you need to safely disconnect the device as seen in the picture below with Win 2000/ XP but not with Win 98.



A. You will see an icon (like the one on the left) at the right bottom corner of the screen. If you click the icon, the following message will appear.



B. If you click on the message, you will see a message like the one below.

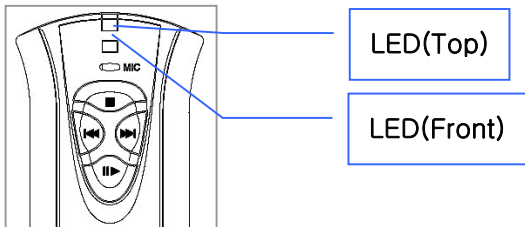


C. Once you click 'OK', you can then safely disconnect the Player from your computer.

2.10 LED Display

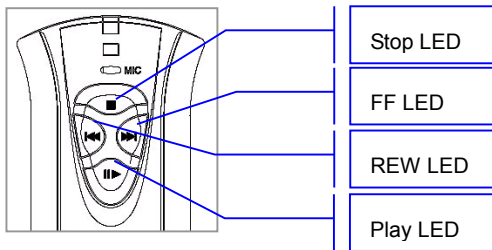
Our MP3 players have two 3-color LEDs, which display the status of the player. One LED is located on top and the other is on front of the player. They work as follows.

Mode	MP3	LED(Top)	LED(Front)
MP3 Play Mode	Play	Green	Green
	Stop	Red	Green
	Pause	Yellow	Green
Language Study Mode	Play	Green	Yellow
	Stop	Red	Yellow
	Pause	Yellow	Yellow
	Repetition (A – B)	Green Light	Yellow
	Speed Control	-	Yellow
Record Mode	Start Record	Green	Red
	Stop Record	Red	Red
	Pause Record	Yellow	Red
Recharge	Recharging	Red	Red
	Finish	Green	Green



► LED Display in Play mode

In MP3 Play mode, the front LED light is green.



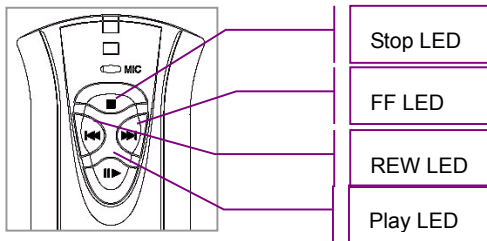
Mode	MP3	LED(Top)	LED(Front)
MP3 Play Mode	Play	Green	Green
	Stop	Red	Green
	Pause	Yellow	Green

The top LED indicates the current status (play, stop, and pause) of the player and the front LED indicates the mode [MP3 Play, Language, and Record].

LED is built-in inside the buttons. When a button is pressed for the first time, four LEDs are turned on for a few seconds to indicate the location of buttons in dark places.

► LED Display in Language Mode

In Language mode, the front LED light is yellow.



Mode	MP3	LED(Top)	LED(Front)
Language Study Mode	Play	Green	Yellow
	Stop	Red	Yellow
	Pause	Yellow	Yellow
	Repetition(A - B)	Green Lighting	Yellow
	Speed Control	-	Yellow

Mode	EQ Mode	Stop LED	FF LED	REW LED	Play LED
EQ	NORMAL	O	O	O	O
	CLASSIC	X	O	X	X
	LIVE	X	X	X	O
	POP	X	X	O	X
	ROCK	O	X	X	X

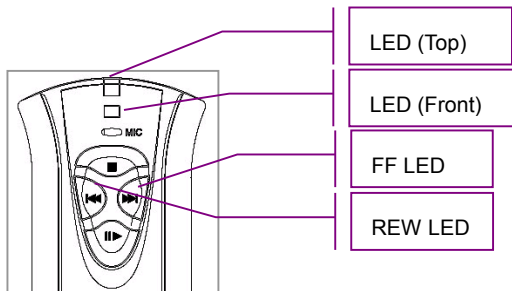
"O" = ON

"X" = OFF

While in block repetition, the top LED light is not lit, indicating that block repetition is currently in progress.

► LED Display in Record Mode

In Record mode, the front LED light is red.



Mode	MP3	LED(Top)	LED(Front)
Record Mode	Recording	Green	Red
	Record Stop	Red	Red
	Record Pause	Yellow	Red

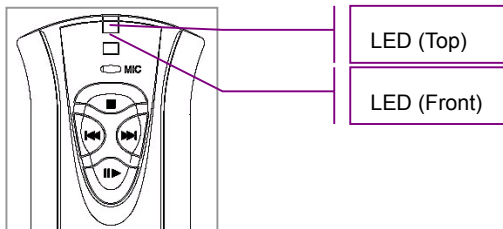
	Record Source Choose	REW LED	FF LED
Record Source	MIC (VOICE)	X	O
	LINE IN	O	X

"O" = ON
"X" = OFF

You can choose input sources by pressing the 'REW' buttons and checking the status through the LED (left or right).

- ▶ LED Display while recharging (Connected to the USB port of the computer)

While recharging, the LED (top) and LED (front) are all Red.



Mode	status	LED(Top)	LED(Front)
Recharge	Recharging	Red	Red
	Finish	Green	Green

3. Customer Support and Firmware Upgrade

Thank you for purchasing the Hanbit MP3 Player.

We exchange defective products for free, unless customers are found to be at fault. For exchange, you may return the product by any means or contact our customer support center via e-mail.

Repair service is normally handled within 48 hours. Products that are repaired will be delivered to service the customer's home address.

▶ Upgrading Firmware

You can download new versions of firmware and learn how to download them by visiting us at <http://www.hbe.co.kr>

Hanbit Electronics Co., Ltd.

<http://www.hbe.co.kr>

Address :

414-5 Woncheon-Dong, Paldal-Gu, Suwon-City, Kyungki-Do, Korea (Zip 442-823)

Telephone : +82 31 218 1900 Fax : +82 31 217 1926

e-mail : support@hbe.co.kr

4. Troubleshooting

Symptom	Checklist
Power does not turn on.	<ul style="list-style-type: none"> ▶ Check if batteries are in the battery compartment and if they are recharged.
Music files are not played.	<ul style="list-style-type: none"> ▶ Check if the power is on. ▶ Check if there are music files on the built-in memory▶ Check the format of music files.
Portable disk is not created even after the Player is connected to the PC.	<ul style="list-style-type: none"> ▶ If the earphones are plugged in, disconnect them and connect the Player to the COMPUTER. ▶ Check if the driver is installed for Windows98 ▶ When multiple USB appliances are used simultaneously, interference between devices may occur. Remove other USB appliances and connect the Player to the PC again.
A message to install the driver appears on Windows Me	<ul style="list-style-type: none"> ▶ For Windows Me, the driver does not need to be installed. In rare cases, however, it needs to be installed. In such cases, install the driver in the same manner as with Windows 98.
'Device Manager' does not read the Player.	<ul style="list-style-type: none"> ▶ When the Player is not read even after the driver is installed, reboot your computer or reinstall the driver.
Cannot delete or save music files.	<ul style="list-style-type: none"> ▶ Check if the hold button is on. (Write-protect function)
The Player is read as a portable device even when the driver is not installed.	<ul style="list-style-type: none"> ▶ On Win 2000/ Me/ XP, you can use the Player without installing the driver. But you need to install the driver for Windows98.

5. Cautions

1. Remove batteries when you are not using the player for an extended period of time. When batteries are not removed while the device is idle for an extended time, they may leak, damaging the product.
2. For your safety, never use headphones or earphones while driving a car, or while riding a motorbike, or bicycle. It is against the law to wear headphones or earphones while driving. Even while walking, it is not safe for music to be too loud using earphones or headphones.
3. To protect your hearing, be careful the volume is not too high when wearing earphones. Experts warn that you may suffer hearing problems if you listen to loud music for many hours. If you feel a buzzing sensation in the ears, lower the volume or discontinue listening to music.

◆ Disclaimer

- ▶ Hanbit Electronics Co., Ltd. is not responsible for data loss or damage. Please back-up important data since this product uses a flash memory chip, capable of being written 300,000 times.
- ▶ All the information in this document is subject to change without prior notice. The manufacturer does not make any representations or any warranties (implied or otherwise) regarding the accuracy and completeness of this document and shall in no event be liable for any loss of profit or any other commercial damage, including but not limited to special, incidental, consequential, or other damages.
- ▶ No part of this document may be reproduced or transmitted in any form by any means without the express written permission of the manufacturer.
- ▶ All brand names and product names used in this document are

Regulatory Information

FCC Compliance Statement

Caution : Any changes or modifications not expressly approved by the party responsible for compliance could void the user's authority to operate the equipment

Note : This equipment has been tested and found to comply with the limits for a Class B digital device, pursuant to Part 15 of the FCC Rules. These limits are designed to provide reasonable protection against harmful interference in a residential installation. This equipment generates, uses and can radiate radio frequency energy and, if not installed and used in accordance with the instructions, may cause harmful interference to radio communications. However, there is no guarantee that interference will not occur in a particular installation. If this equipment does cause harmful interference to radio or television reception, which can be determined by turning the equipment off and on, the user is encouraged to try to correct the interference by one or more of the following measures:

- Reorient or relocate the receiving antenna.
- Increase the separation between the equipment and receiver.
- Connect the equipment into an outlet on a circuit different from that to which the receiver is connected.
- Consult the dealer or an experienced radio/TV technician for help.

This device complies with Part 15 of the FCC Rules. Operation is subject to the following two conditions: (1) this device may not cause harmful interference, and (2) this device must accept any interference received, including interference that may cause undesired operation.

CE Marking and European Union Compliance



Products intended for sale within the European Union are marked with the CE Mark which indicates compliance to applicable Directives and European Norms (EN), as follows. Amendments to these Directives or Ens are included:

Applicable Directives

- Electromagnetic Compatibility Directive 89/336/EEC

Applicable Standards

- EN 55022:1998, Limits and Methods of Measurement of Radio Interference Characteristics of Information technology Equipment
- EN 55024:1998; Information technology equipment-Immunity characteristics Limits and methods of measurement.

Customer Card

Product Name: **Model:**

Purchasing Date: **Customer:**

E-mail: **Telephone:**

Address:



1 Year
Limited
Warranty

Warranty Card

The product purchased is warranted and tested to be free from defects in material and Workmanship and conform to the published specifications. Hanbit Electronics Co.,Ltd will offer a service for product Malfunction in the conditions as below.

1. Limited Quality Warranty

- 1) For a period of one year from the date of purchase.
- 2) HANBIT Elec. Co., Ltd will repair or replace your product with a comparable product for a defect occurred by improper workmanship or materials within the warranty period.
- 3) The target of no compensation service:
The product proved not to pass a period of one year from the date of purchase.
Hanbit Electronics Co., Ltd will charge the cost for malfunction occurred by a negligence, a mistake, repair and rebuilding in other place no Hanbit's agency.
- 4) Duration of no compensation service is one year.
Compensation service will be offered in a principle as below after one year.

2. Compensation / No compensation Service

- 1) No compensation Service
 - A. Content of compensation for damage (within 1 year from purchasing date) :
Need to repair due to a functional defect in the normal state within 10 days after purchasing.
 - B. Exchange or Repayment : Need to repair for the efficiency or functional defect in the normal state within 1 month after purchasing.
 - C. Product Exchange : Occurrence defects until 3 times as the same reason within 1 month.
- 2) Compensation Service Charge Service
Hanbit Electronics Co., Ltd can charge a customer the cost to ask for repairs and can refuse the repairs in the reason as below.
 - A. Defects of function occurred in product which is exceeded the validity period of quality warranty.
 - B. The case crushed or cracked by shock.
 - C. The case destroyed by using a non standardized parts.
 - D. The case modified by disassembly or remodeled construction or function.
 - E. The malfunction occurred by the natural disaster.
 - F. The Obvious fault occurred by mishandling of purchaser

※ Note : Exhibit the customer card in order to get the service, This card is not reissued again.



DECLARATION OF CONFORMITY

With regard to the essential requirement of The Council Directive 89/336/EEC

We, HANBit Electronics Co., Ltd.
of 414-5, Woncheon-Dong, Paldal-Gu, Suwon-City, Kyoungki-Do, Korea

declare under our sole responsibility that the product ;

Product : MP3 PLAYER
Model : MP3N306

To which this declaration relates is in conformity with the following standards or other normative Documents;

EMC Specification:

IT Equipment Emission	EN 55022:1998 (Class B)
IT Equipment Immunity	EN 55024:1998

Signed on behalf of HANBit Electronics Co., Ltd.

Charlie Jung
(name)
Senior Managing Director
(title)

November, 03, 2003
(signature of authorized person) (date)



HANBIT Electronics Co., Ltd. _____

Address : 414-5 Woncheon-Dong, Paldal-Gu, Suwon-City, Kyungki-Do, Korea (Zip 442-823)

Telephone : +82 31 218 1900 / Fax : +82 31 217 1926

Home Page : www.hbe.co.kr / E-mail : support@hbe.co.kr