

XDRUM Smart Audio Player



Model : XD403



HANBIT Electronics Co., Ltd.

<http://www.hbe.co.kr>

PREPARATIONS

- Contents●
- Features●
- Inserting Battery●
- Safety Instruction●

Contents

1. Preparations	2
Features	4
Safety instruction	5
Inserting battery	6
Appearance	7
2. Drive installation for Windows 98	9
3. Basic function	12
4. Setup menu description	27
5. Firmware upgrade	40
6. Application software	48
7. Customer Support	49
Troubleshooting	50
Safety	51
Customer support and A/S	53
Company and website	53
Accessories	54

Features

- USB portable memory storage device
- Worldwide FM Tuner / Recorder
- LCD back light and 4 line display (4 Line LCD)
- Firmware upgradeable
- User friendly navigation design
- Direct MP3 encoding function: convert external audio files into MP3 files
- 6 Band 6 EQ / User EQ mode support
- Adjustable playback speed and repeat function
- Line-in auto sync. function
- MP3, WMA, ASF format support
- Digital voice recorder
- Sleep power off / Stop power off function
- Sound balance function
- TTS (Text to Speech) function (option)
- Playlist function
- 10 FM Preset / Auto-scan function
- Built-In speaker
- VAD (Voice Activity Detect) function
- Long-lasting playback time only with a AA battery (more than 20 hours)
- High-brightness LED flashlight
- 5 application software : E-mail, PC Lock, Time Lock, File Lock, My-AD

Safety Information

- Don't try to disassemble and repair the device yourself.



- Don't push two buttons at the same time or disjoint the machine.



- Don't spray or put water directly on the surface of the device for cleaning. Just smoothly wipe its surface with dry towel. Don't use chemicals or cleaner as they may damage its surface and color.



- Don't drop or put pressure on the device. Keep it away from a magnet or a place with strong vibration



- Don't expose to extreme temperatures (above 95F or below 23F) Don't expose to moisture.



- Please contact customer service center when the player is wet or dropped in water. If you operate the player when it's wet, it will cause malfunctioning.



■ How to Insert Battery



1. Slide the battery cover in the direction of arrow and open it like the picture.



2. Insert battery properly in accordance with the plus (+) and minus (-) directions.



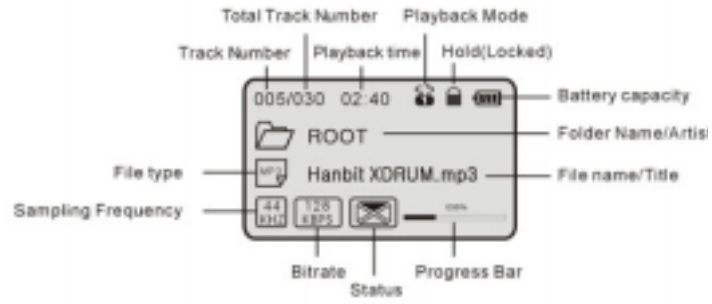
3. Slide the battery cover in the direction of arrow and close it like the picture.

NOTE : Do not place heavy objects on the cover

■ Front / Back Appearance



■ Side View / LCD Screen



DRIVE INSTALLATION FOR WINDOWS 98

■ Drive Installation for windows 98●

Drive Installation for windows 98

Note

Please install the drive before connecting XD403 to PC.

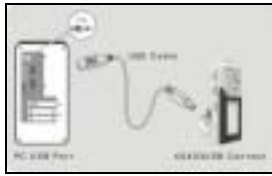
1. Insert the installation CD into CD-ROM Drive.
2. Select Windows 98 Driver folder in the XDRUM XD403 folder in the CD.
3. Execute Win98Driver_XD403_En.exe in the folder.



4. Click "Next" button to continue and complete the installation



5. Restart your Computer (PC) after completing installation.
6. Connect the USB extension cable to PC's USB port.



7. If you see "USB CONNECTED!" message on LCD screen, it's successfully connected.



Copy and paste files like a USB disk drive as shown below



BASIC FUNCTION

■ Basic Operation	●
■ Navigation(Search Files)	●
■ Setup Menu	●
■ Function Menu	●
■ Repeating Track	●
■ Deleting File/Folder.....	●
■ Loop Repeating	●
■ EQ Function	●
■ Play List	●
■ Listening to the music	●
■ Listening to the Radio	●
■ Recording FM Tuner	●
■ Recording Voice	●
■ Recording External Audio Devices	●

Basic Operational Functions

- Press and hold PLAY/STOP button to turn on / off the power.



- Lightly press PLAY/STOP button to play or stop music file.



- Push OK button in the direction of + / - to adjust VOLUME.



- Push OK button to ► or ◀ direction to play next or previous music
- Push and hold PLAY/STOP button to play fast forward or rewind.



- Press OK button on its center to select Music/Menu/Folder
- Press and hold OK button to display Setup Menu when stop playing.



Navigation(Search Files)

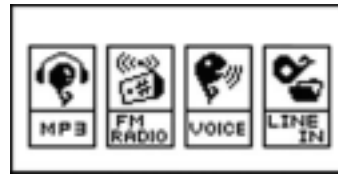
You can easily search songs or folders in MP3 mode by using the NAVIGATION function. To use the NAVIGATION function, lightly press OK button in MP3 mode and search files by pushing the OK button toward plus (+) or minus (-) directions. Then, if you press OK button again, the song you found is selected.



After selection, you can enjoy the song by pressing PLAY/STOP button.

Function Menu




Press and hold REC/MODE button to display FUNCTION MENU.



- Move between menus: pushing OK button to \gg or \ll direction.
- Select Menu/Function: pressing OK button.

Repeating Track

To use Repeating track function for folders or songs selected, lightly press REC/MODE button and select Repeating track options one-by-one when MP3 file is in Play or Stop mode.

	Repeats the whole track in the folder
	Repeats only one song
	Stops when all songs in the folder are played

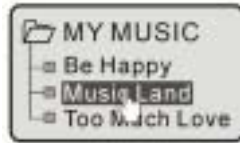
Deleting File/Folder

Deleting FILE/FOLDER function is only available when Play is stopped (in Stop mode).

In NAVIGATION function, go to the file or folder you want to delete and press A-B/EQ button to display the message of 'FILE DELETE, ARE YOU SURE?'. Upon seeing the message, push OK button to **▶▶** or **◀◀** direction to select YES or NO, and press the OK button to delete the file or folder selected.

Note

Before deleting a folder, data within the folder must be deleted in advance.





Use LOOP REPEATING function when you want to repeat a certain range of file in play.

1. Define Start point of repeat range: define start point (A point) of the repeat range for the music/voice file in play by pressing A-B/EQ button (A is displayed on the LCD screen).



2. Define End point of repeat range: press A-B/ EQ button again at the point where you want to stop REPEAT. (A→B will be displayed on LCD screen. The defined range is repeatedly played)



3. To release REPEAT RANGE function, lightly press A-B/EQ button again.



EQ function  

EQ function is only operational when MP3 Mode is in Play or Stop.

1. If you press and hold A-B/EQ button when MP3 Mode is in Play or Stop, EQ will be displayed. If you push the button again and again, the following Timbre will be displayed consecutively. (NORMAL - CLASSIC - LIVE - POP - ROCK - USER EQ)

Note

EQ function is only activated when Study Mode of Setup Menu is off.

2. If you want to define Timbre to your liking, press and hold OK button and select User EQ in Setup Menu (Please refer to User EQ in Setup Menu section, later)

Play List

Play List function allows you to select and play only the songs (up to 10 songs) you want to listen out of songs stored in MP3 Mode.

1. Using the NAVIGATION function of OK button, select files by pushing the button toward +/- direction and store files by pressing REC/MODE button



2. Using the NAVIGATION function of OK button, select files by pushing the OK button toward +/- direction and store files by pressing REC/MODE button.



3. After selecting songs (files), you can play the selected files by pressing PLAY/STOP button.



When PLAY LIST is in play, songs (files) in PLAY LIST will be continuously repeated regardless of pre-defined REPEAT MODE.

4. To delete a file from PLAY LIST, select the file and press A-B/EQ button and then the file will be deleted from PLAY LIST.



5. How to get out of PLAY LIST: In Play List mode, lightly press REC/MODE button to return to MP3 Stop Mode.



Listening to the music

1. Press and hold PLAY/STOP button to turn on the power of the Player
If power is not on, check the battery and HOLD switch location.



2. Select music you want to play by using NAVIGATION function.
(Please refer to NAVIGATION function in Basic Operation)



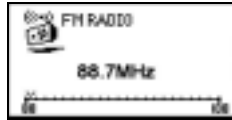
3. You can play the music by pressing PLAY/STOP button after selecting the music.
4. While a music file is in PLAY, if you want to go back to previous music, lightly push OK button to « direction, or to » direction if you want to move to Next music.
5. To adjust volume, push OK button toward plus (+) or minus (-) direction.
6. While a music file is in PLAY, push OK button to » direction to fast forward (FF), or to « direction to rewind (REW) the file.
7. Lightly press PLAY/STOP button to stop the music.
8. Press and hold PLAY/STOP button to turn off the power.

Listening to the Radio

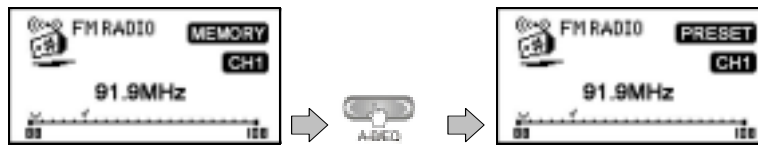
1. Press and hold REC/MODE button to display Function Selection screen. Lightly push the OK button to the left or right to select FM RADIO.



2. Select channels (frequency) by lightly pushing OK button to ◀ or ▶ direction. If you want to use AUTOSCAN, press and hold OK button to ▶ or ◀ direction when PRESET is released.



3. After finding the channel you want, if you want to save the Radio channel, lightly press A-B/EQ button. When 'MEMORY' is displayed on LCD screen, lightly push OK button to ◀ or ▶ direction to select 'CH' and press A-B/EQ button again to save the channel. You can save up to 10 channels.



4. If you want to search for the channels stored, lightly press the OK button to enter PRESET mode. After that, select a channel stored by lightly pressing OK button to ◀ or ▶ direction.

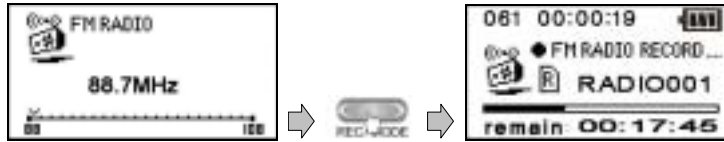
5. If you want to find and save channels using AUTOSCAN:

Upon pressing and holding OK button in PRESET mode, "AUTOSCAN START" will be displayed on LCD screen and channels will be automatically scanned and stored. When channel saving is completed, the message of "COMPLETE" will be displayed on LCD screen.

When listening to the Radio, plug-in an earphone set. As an earphone takes the role of antenna, you cannot clearly listen to the Radio without an earphone. In areas where reception of frequency is not good, quality of broadcasting may be undermined.

Recording FM Tuner

1. While listening to the FM Radio, lightly press REC/MODE button to start recording. Please note that recording is not allowed in PRESET mode.



2. Lightly press PLAY/STOP button to finish recording.

3. To suspend recording for some moment, lightly press the REC/MODE button.

4. To play the recorded file, go back to MP3 mode and press the OK button to enter into RECORD folder and play it.

Note

In that case, the recorded files will be in RADIO***.MP3 file format in the RECORD folder of the PLAYER. According to their recording order, they will be saved as RADIO001, RADIO002, *** form.

In the Setup Menu, you can change the environment for FM recording (Refer to Setup Menu)

Recording Voice

1. Press and hold REC/MODE button to move to Function Menu
2. After selecting VOICE by lightly pushing the OK button to \blacktriangleright or \blacktriangleleft direction, press the OK button.



3. Upon selection, the Player becomes Voice Recording Ready mode.



4. Lightly press REC/MODE button to start recording.
5. To suspend recording, lightly press REC/MODE button again.
6. To stop and save recording, lightly press PLAY/STOP button.
7. To play recorded files, go back to MP3 mode and press OK button to go into the VOICE folder.

Note

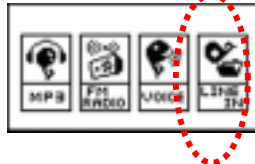
Recorded files are saved as REC***.MP3 format under VOICE folder. You can play the files in MP3 mode. You can change the environment for Voice Recording in Setup Menu. (Refer to Setup Menu)

Recording External Audio Devices

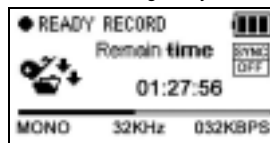
1. This function allows you to record an audio signal from external audio device or PC. Connect external device to the Player using the enclosed audio cable as shown below.



2. Press and hold REC/MODE button to display Function Selection screen. Push OK button to « or » direction to select LINE-IN, and press the OK button.



3. Upon selection, the Player becomes Recording ready mode.



4. To start recording, lightly press REC/MODE button.



5. To suspend recording, lightly press REC/MODE button again.

6. To stop and save recording, lightly press the PLAY/STOP button.

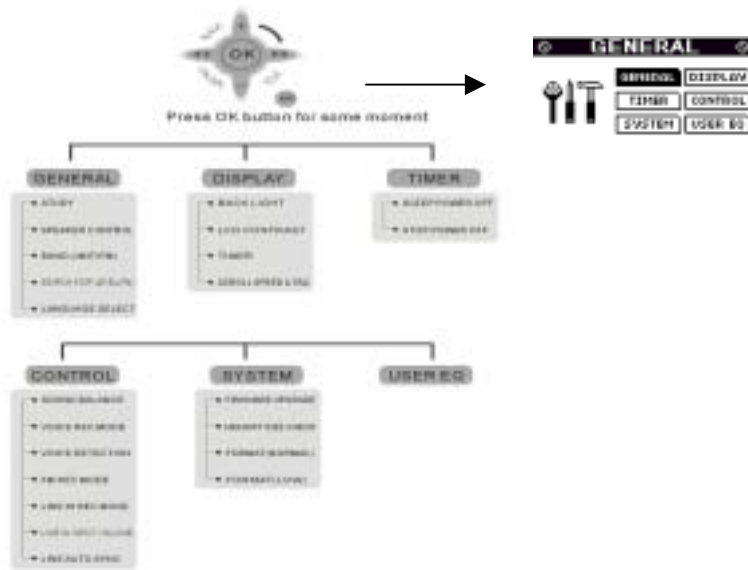


Note Recorded files are saved as REC***.MP3 format under RECORD folder. You can play the files in MP3 mode. You can change the environment for LINE-IN recording in Setup Menu (Refer to Setup Menu).

SETUP MENU DESCRIPTIONS

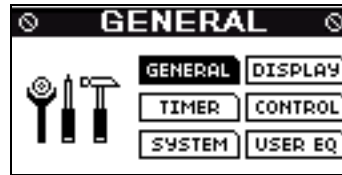
■ Overall Setup Menu	●
■ General Setup	●
■ Display Setup	●
■ Timer Setup	●
■ System Setup	●
■ Control Setup	●
■ User EQ Setup	●

Overall Setup Menu



Setup Menu

To adjust various setups of XDRUM AUDIO PLAYER, press and hold the OK button to enter Setup Menu. (When recording is underway or the Player is in Mode Change Menu status, you cannot go into Setup Menu regardless how strongly you press OK button).

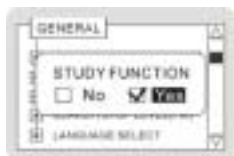


- Movement between menus: lightly push the OK button to up · down · left · right directions
- Menu/Function selection: press and hold OK button.
- Function adjustment: lightly push the OK button to ◀ or ▶ direction.
- Getting out: return to upper menu after saving the setup by pressing PLAY/STOP button.

General Setup



- **STUDY** : In STUDY MENU, press OK button to select it. Then, STUDY FUNCTION menu will be displayed. If you select YES, STUDY function is activated allowing you to adjust speed of music in MP3 mode but if you select NO, EQ function is provided (Default is NO)



In playing MP3 mode, press and hold A-B/EQ button to select the function and press A-B/EQ button to adjust the speed by 6 phases

(Normal / Slow1 / Slow2...Slow5).

Setup Menu → GENERAL → STUDY → Function Selection → PLAY/STOP button



- **SPEAKER CONTROL**: Select YES, if you want to use internal speaker. or NO if you don't use it.

If you select YES, Electricity will be supported to speaker. and battery life can be little shorten. So If you don't use internal speaker, please select No.

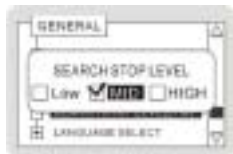
(Default is NO)

Setup Menu → GENERAL → SPEAKER CONTROL → FUNCTION SELECTION → PLAY/STOP button



- **BAND LIMITS (FM)** : it is to setup FM BAND range by country. There are two regions (US/KOR/EUR and JAPANESE). Select JAPANESE in Japan or select US/KOR/EUR in other regions
(Default is US/KOR/EUR)

Setup Menu → GENERAL → BAND LIMITS (FM) → REGION SELECTION → PLAY/STOP
button



- **SEARCH STOP LEVEL (FM)**: it is to define FM reception level. Setting is available in three levels such as LOW, MID and HIGH. The lower the level is, the more sensitive it is in receiving lower frequency.
(Default is MID)

Setup Menu → GENERAL → SEARCH STOP LEVEL → LEVEL SELECT → PLAY/STOP
button



- **LANGUAGE SELECT**: characters may be broken depending on PC operating system where song titles or ID3TAG information is entered. Therefore, you need to select LANGUAGE befitting the PC operating system where songs are created. It supports languages of over 44 countries including Korean, English and Japanese.
(Default is ENGLISH)

SETUP MENU → GENERAL → STUDY FUNCTION → LANGUAGE SELECT → PLAY/STOP
button

Display Setup



- **BACK LIGHT** : you can setup the time during which LCD screen light is on by pushing OK button to the left or right. (Default is 5 SEC)
Setup Menu → DISPLAY → BACK LIGHT → TIME SETUP → PLAY/STOP button



- **LCD CONTRAST** : you can adjust contrast of LCD screen by pushing OK button to the left or right. (Default is 6)
Setup Menu → DISPLAY → LCD CONTRAST → CONTRAST ADJUST → PLAY/STOP button



- **TIME**: if you select NORMAL, play time of a song is displayed. If you select REMAIN, remaining play time of a song is displayed. (Default is NORMAL)

Setup Menu → DISPLAY → TIME → SETUP → PLAY/STOP button



- **SCROLL SPEED & TAG**: the display speed of music name/file name on the screen can be defined as 1x/2x/3x/4x as shown in the picture. (Default is 3x & File Name)

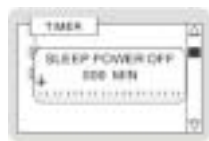
Setup Menu → DISPLAY → SCROLL SPEED & TAG → TIME SETUP → PLAY/STOP button



1. Id3tag : Display ID3 TAG (or file name)

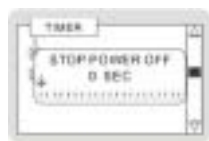
2. File Name : Display file name / 3. Lyric : Display the words of song(or file name)

■ Timer Setup



- **SLEEP POWER OFF:** you can setup timer by pushing OK button to the left or right. When it reaches the time defined, the Player will be automatically turned off. This function is very useful when you want to fall asleep while listening to the music. When the power of the player is off, the initial timer setup will not be effective and it returns to default timer setup (setup is possible up to 300 minutes). (Default is 0 SEC)

Setup Menu → **TIMER** → **SLEEP POWER OFF** → **TIME SETUP** → **PLAY/STOP button**

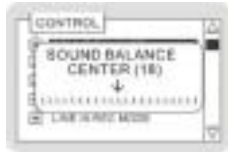
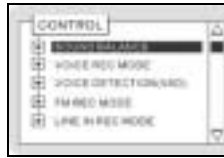


- **STOP POWER OFF:** you can define Power Off time by pushing OK button to the left or right. You can define from 30 sec. to 30 minutes. It stops play and turn off power upon reaching the defined time without requiring further button inputs. (Note : if you define 0 sec., the power will not be turned off and the Player stays only in STOP mode.)

(Default is 30 SEC)

Setup Menu → **TIMER** → **STOP POWER OFF** → **TIME SETUP** → **PLAY/STOP button**

Control Setup

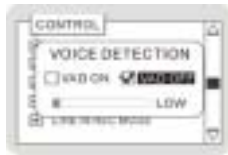


- **SOUND BALANCE** : you can adjust output level of left or right side of earphone or headset by pushing OK button to the left or right direction. (Default is 18)

Setup Menu → CONTROL → SOUND BALANCE → SETUP → PLAY/STOP button

- **VOICE REC MODE**
you can select sound quality in voice recording
 1. File type setup: voice file selection is available in three types (MP3 / ADPCM / TVF) (Default is MP3)
 2. SAMPLING frequency: you can select minimum 8 KHz to maximum 22.5 KHz depending on the file type you selected. (Default is 22.05KHZ)
3. BITRATE: you can select minimum 8Kbps to maximum 112 Kbps depending on the file type you selected. (Default is 96KBPS)

Setup Menu → CONTROL → VOICE REC MODE → SETUP → PLAY/STOP button



● **VOICE DETECTION:**

1. When you select MP 3 in VOICE REC MODE as explained above – in voice recording, the Player automatically detects external sound and if voice sound is not detected for a certain time period, the Player automatically suspends recording to save its memory capability thereby allowing longer period voice recording. (Default is VAD OFF)

VAD ON: Voice activity detection function is on

VAD OFF: Voice activity detection function is off

Voice detection level setup: it can be defined as LOW, MIDDLE and HIGH. (Default is MIDDLE)

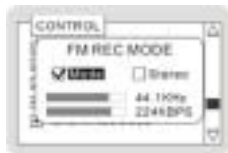


2. When you select TVF in VOICE REC MODE – in voice recording, the Player automatically detects external sound and if voice sound is not detected, it automatically saves its memory capability to allow longer period voice recording.

DTX ON: Voice activity detection function is on

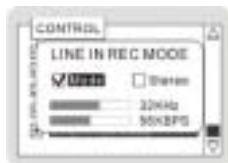
DTX OFF: Voice activity detection function is off

Setup Menu → CONTROL → VOICE REC MODE → SETUP → PLAY/STOP button



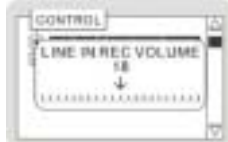
- **FM REC MODE** : you can select sound quality in radio recording
 1. RECORD mode: you can define it as MONO or STEREO.
 2. SAMPLING frequency: setup is possible from 16 KHz to 44.1 KHz.
 3. BIT RATE: you can define it from 32Kbps to 224Kbps. (Default is Stereo / 44.1KHZ / 128KBPS)

Setup Menu → CONTROL → FM REC MODE → SETUP → PLAY/STOP button



- **LINE-IN REC MODE**: you can select sound quality in line-in recording.
 1. Recording Mode: you can define it as MONO or STEREO
 2. BIT RATE: you can define it from 32Kbps to 224Kbps
 3. SAMPLING frequency: you can define it from 16KHZ to 44.1KHz. (Default is Stereo / 44.1KHZ / 128KBPS)

Setup Menu → CONTROL → LINE IN REC MODE → SELECT → PLAY/STOP button



- **LINE-IN INPUT VOLUME** : in line-in recording, you can adjust recording level by pushing OK button to the left or right. The higher the level is, the bigger the recording volume is. (Default is 35)

Setup Menu → CONTROL → LINE IN INPUT VOLUE → SETUP → PLAY/STOP button



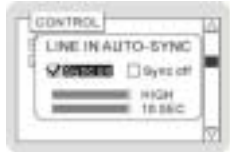
● **LINE-IN AUTO SYNC:**

In case of playing and recording multiple files consecutively from an external audio device through Line-in input, it automatically detects silent interval between files. Then it recognizes and records each file separately. Silent interval can be defined from 1 sec. to 10 sec.



SYNC OFF : it turns off the audio signal detection function and useful in recording all audio track defined in one file.

SYNC ON : it activates the audio signal detection function and creates new file when there is no audio signal within detection time. It is useful in recording one song in one file.



Detection Level: you can define detection level which is available in LOW, MIDDLE and HIGH. The lower the level is, the more sensitive it is in detecting small signal.

Detection time: it creates new files when there is no signal during defined time period.

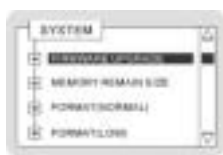
(Default is Sync off / MIDDLE / 3 SEC)



- **Firmware Upgrade**

For firmware upgrade, press the OK button in FIRMWARE UPGRADE. Select YES and press the OK button again. Then, "FIRMWARE UPGRADE. Not connect!!" message will be displayed on LCD screen. Upon seeing the message, connect the Player to USB CONNECTOR of PC. Then, you can see "Connected" on the LCD screen. Now you can start Firmware Upgrade.

(Default is NO)



Note

You must install Firmware Upgrade Drive to use Firmware Upgrade. (Please refer to Firmware Upgrade Section)



- **MEMORY SIZE CHECK:**

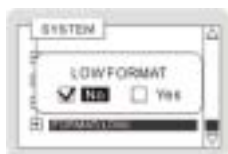
It displays total memory capacity. You can check and see total and remaining memory capacity by pushing the OK button ► or ◀ direction.

Setup Menu → SYSTEM → MEMORY SIZE CHECK → SETUP → PLAY/STOP button



- **FORMAT (NORMAL)** : it executes NORMAL FORMAT. Be careful in executing format as all stored data will be deleted when format is executed. (Default is NO)

Setup Menu → SYSTEM → FORMAT (NORMAL) → SETUP → PLAY/STOP button



- **FORMAT (LOW)** : It executes LOW FORMAT. In case of LOW FORMAT, it may take some time. (Default is NO)

Setup Menu → SYSTEM → FORMAT (LOW) → SETUP → PLAY/STOP button



- Select frequency band you want to adjust by pushing OK button to ► or ◀ direction.
- Setup your desired level by pushing OK button to plus (+) or minus (-) direction.
- To complete and finish the adjustment, press PLAY/STOP button. (Default is 0 dB)

Setup Menu → USER EQ → SETUP → PLAY/STOP button

FIRMWARE UPGRADE**Preparation for Firmware Upgrade**

1. Prepare and accommodate following requirements.
 - Acquire a PC (general PC) having USB port
 - MP3 Player (XD403)
 - FIRMWARE UPGRADE execution files (ex: EasyUpdateFirmware.exe)
 - Latest version of FIRMWARE (downloadable via www.hbe.co.kr)
 - FIRMWARE UPGRADE execution files and driver installation files are available in the CD provided in the Product package or in the download bulletin board on our website

Caution

Before Firmware upgrade, back up important data in XD403 for safety

2. You must install FIRMWARE UPGRADE Drive to use FIRMWARE UPGRADE.
If you use Windows 2000, execute Firmware_Win2K.exe located in the Firmware Upgrade Driver folder in the CD(If you use Windows 98, Me or Windows XP, execute Firmware_Win98MeXP.exe) and restart your PC after completing installation



3. Now, go into Setup Menu in the MP3 player (XD 403) and define the Player as System → Firmware Update mode.



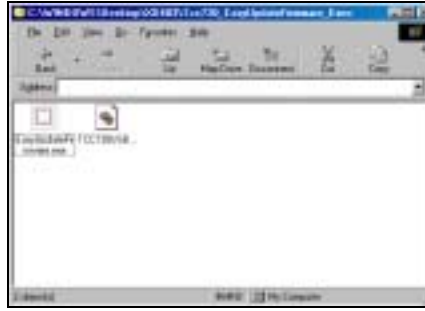
Connect MP 3 player (XD403) to PC's USB port as shown in the picture.



If you connect MP3 Player (XD403) to PC's USB port, the message of "FIRMWARE UPGRADE Connected!!" will be displayed on LCD screen.



4. Execute 'EasyUpdateFirmware.exe' located in XDRUM XD403 folder in the CD drive (or download it from www.hbe.co.kr).



5. Click Download Application.



6. Click Save when the following window is displayed.



7. Click Save after selecting the location to save the file





Download is executed as shown in the picture and the zip file is saved in the folder you selected.



8. Unzip the downloaded zip file as shown in the picture.
(Use Winzip program)



9. Click Update Application



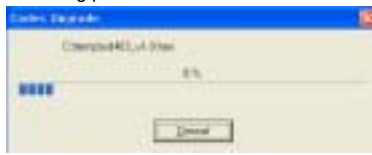


10. Select the location of Firmware to be updated.

11. Select hex file that is unzipped, and click Open (O)



Firmware Upgrade is processed as shown in the following pictures.



- Click OK to finish the Upgrade.



Caution If the program suddenly stops in the middle of Firmware Upgrade procedure, firstly release the XD403 from PC and re-operate EasyUpdateFirmware.exe

- If you release XD403 from PC after completing Firmware Upgrade, XD403 will be turned off automatically. Then turn on XD403, and execute Format(Normal) operation in the System Setup Menu to use XD403 safely.

Setup Menu → SYSTEM → FORMAT(NORMAL) → SETUP → PLAY/STOP button

APPLICATION SOFTWARE

■ Application Software

HANBIT Electronics supply you with five useful application softwares as shown below.

1. E-MAIL : Enable you to receive and send email on other PC.
2. PC LOCK : Protect from illegal approach by using system lock key
3. TIME LOCK : Limit PC using time to prevent internet addiction
4. FILE LOCK : Hold function for protection document, as well as auto compression and uncompression
5. MY AD : As a POP UP function, showing desired graphic file on the monitor.

Please refer to Application Software folder in supported CD for usage


CUSTOMER SUPPORT

- Troubleshooting
- Safety Information
- Product Specification
- Customer Support and A/S
- Company and our webSite
- Accessories
- Warranty Card

 Troubleshooting

Please check the following first when you think there is something wrong with the Player.

I cannot turn on the Power.	<ul style="list-style-type: none"> ● Did you properly insert the battery? ● Check whether the HOLD switch of the Player is in the lock mode. (If it's in lock mode, please switch it to the unlock mode) ● Please check remaining battery fuel gauge.
I cannot hear any sound or there is noise in sound.	<ul style="list-style-type: none"> ● Is the Volume defined as '0'? ● Please check whether your earphone is properly inserted or there is any alien material in the terminal. ● In case of MP3 and WMA, noise might be caused when data is damaged. Please check other files to see whether it's the case.
Some weird characters appear on LCD screen	<ul style="list-style-type: none"> ● Please check whether language is properly defined by entering 'Setup Menu→Display→Language menu'.
In listening to the Radio, there is noise and frequency is not clearly captured	<ul style="list-style-type: none"> ● Move around the Player or earphone to various directions. Please turn off other electronic devices nearby. ● Earphones take the role of antenna when you listen to the Radio. Therefore, if you don't properly insert your earphone, the frequency may not be clearly received.
I cannot save data	<ul style="list-style-type: none"> ● Please check whether battery is out or USB cable is properly connected between your PC and the Player ● Please check whether HOLD switch is in OPEN mode.
I cannot operate any control and there is no sign in LCD	<ul style="list-style-type: none"> ● Please check the battery to be inserted in the right direction ● Please check the battery capacity

 Safety

- Don't put strong pressure on the Player such as dropping it.

The Player may be significantly damaged if you drop it from a higher place or put strong pressure on it with a hard object, but the Player is designed to be resistant to movement or vibration caused by fast walking or exercising.

- Please keep it away from water.

If the Player is wet, significant damages or problems may be caused. When the Player is wet, wipe the Player with dry towel as soon as possible and take the battery out before showing it to an expert for checkup.

- Please remove battery when you don't use the Player for a long time.

If you put the battery in the Player while not using it for a long time, the Player may be damaged due to leakage of battery.

- Do not leave the player in a location near heat sources, or in a place subject to direct sunlight, excessive dust or sand, moisture.

- **Disclaimer**

Hanbit shall not be held legally liable for any data loss or damage caused while using the Player by our consumers. Due to the nature of Flash Memory chip, the frequency of data storage has its own lifespan. Please secure back-up files in a safer place for important data.

Part or the entire manual shall not be copied or used for any activities illegally without the prior consent of Hanbit.

Hanbit shall not be held legally liable for any technical/editing related mistakes or errors mentioned in the User Manual.

■ Customer Support and A/S

- Thank you for purchasing Hanbit's product.

Even though Hanbit has been doing its best to produce quality products, there can be some problems involving our products. If you have any problems in using our product and you need A/S (after sales service), please contact us at the following address.

Sorry for the inconveniences you experience.

Customer Service Team address:

To Customer service responsible person / Customer Service Team of Sales Division, Hanbit Ltd.
414-5 Wonchon-dong, Youngtong-gu, Suwon City, Kyunggi Province
Republic of Korea, 443-823

TEL: 82-31-218-1915 / FAX: 82-31-217-1926

Website: <http://www.hbe.co.kr> (Customer Support)

■ Company and our website

- Website address: <http://www.hbe.co.kr>
- Our website provides useful information on our products and responses for customers' inquiries or questions.
- You can continuously upgrade your Player by using FIRMWARE UPGRADE available on our company website.

■ Accessories

1) XD403



2) Stereo Earphone



3) Extension Cable



4) Neck Strap



5) CD Drive



6) Manual



7) AA Battery



8) Audio Cable



9) Carrying Case



10) Armband[option]



* Accessories is subject to change for improvement without notice.

FCC Compliance Statement

This device complies with Part 15 of the FCC Rules.
Operation is subject to the following two conditions:
(1) This Device may not cause harmful interference, and
(2) This device must accept any interference received,
including interference that may cause undesired
operation.

Caution : Any changes or modifications in construction of this device which are not expressly approved the party responsible for compliance could void the user's authority to operate the equipment.

NOTE : This equipment has been tested and found to comply with the limits for a Class B digital device, pursuant to part 15 of the FCC Rules. These limits are designed to provide reasonable protection against harmful interference in a residential installation. This equipment generates, uses and can radiate radio frequency energy and, if not installed and used in accordance with the instructions, may cause harmful interference to radio communications, However, there is no guarantee that interference will not occur in a particular installation. If this equipment does cause harmful interference to radio or television reception, which can be determined by turning the equipment off and on, the user is encouraged to try to correct the interference by one or more of the following measures:

- Reorient or relocate the receiving antenna.
- Increase the separation between the equipment and receiver.
- Connect the equipment into an outlet on a circuit different from that to which the receiver is connected.
- Consult the dealer or an experienced radio/TV technician for help.

Product Series



CompactFlash Card



MultiMedia Card



Secure Digital Card



SmartMedia Card



PCMCIA Card



XDRUM MP3 Player



XDRUM MP3 N Drive



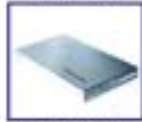
USB N Drive



USB N Stick Drive



MultiCard Reader



HDD Enclosure



Memory Module



HANBIT Electronics Co., Ltd.

Address : 414-5 Woncheon-Dong, Youngtong-Gu, Suwon-City, Kyongki-Do, Korea (Zip 443-823)

Telephone : +82 31 218 1915 / Fax : +82 31 217 1926

Home Page : www.hbe.co.kr / E-mail : support@hbe.co.kr

Code : Y0010670