

handheld



Chapter 3

Installing the Device Driver

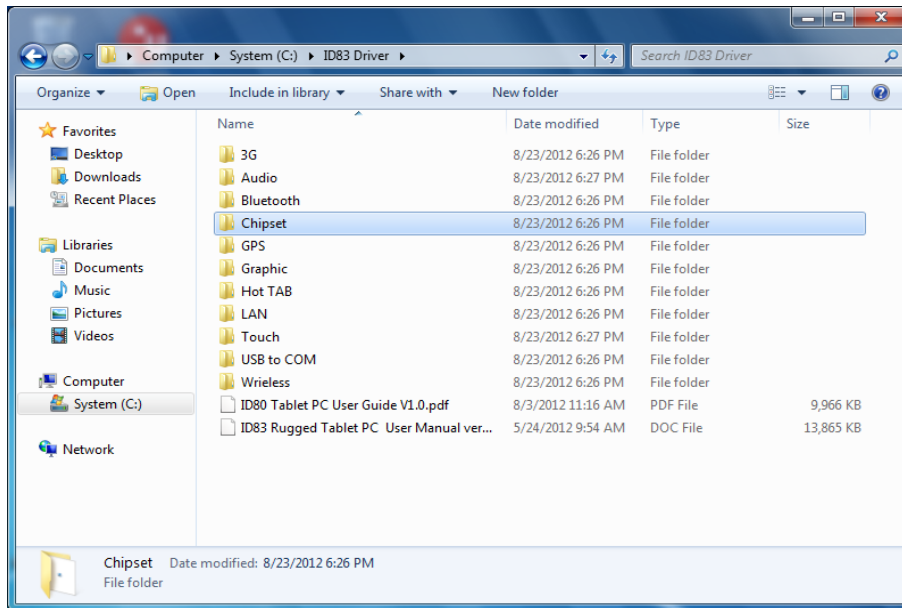


CHAPTER 3 Installing the device driver

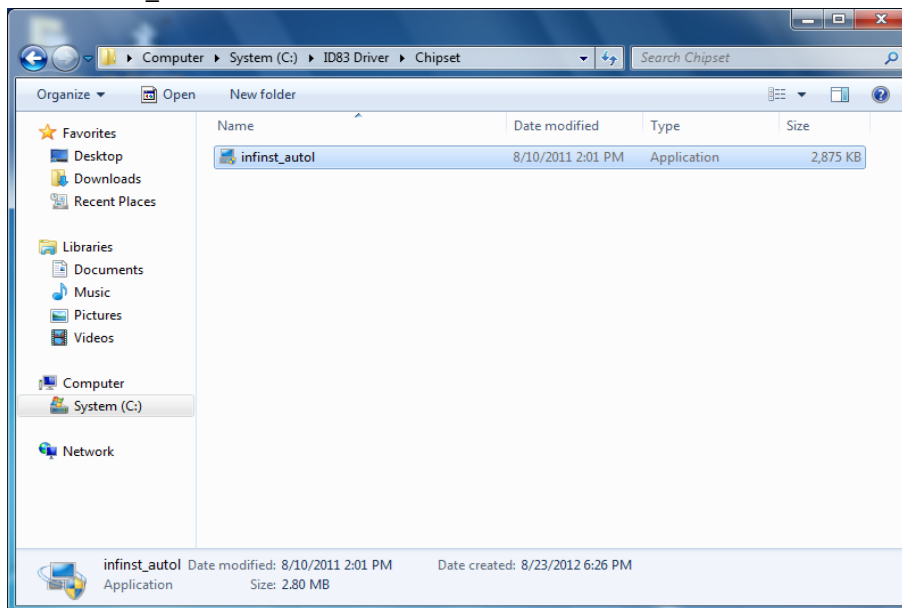
Through Chapter 3 to go further for A7 driver installation guide, you can easily install all related drivers if without operation system by yourself. The default system will include operation system and you do need to install any of drivers at first time use.

3.1 Chipset Driver Installation

1. Open the file document “Chipset” from C:\drivers folder.



2. Click on “infinst_auto” to install driver.





3. Click on "Next" to install driver.



4. Click on "Yes" to agree License



5. Click on "Next" to install driver.



handheld



6. Click on “Yes, I want to restart this computer now” to go on.

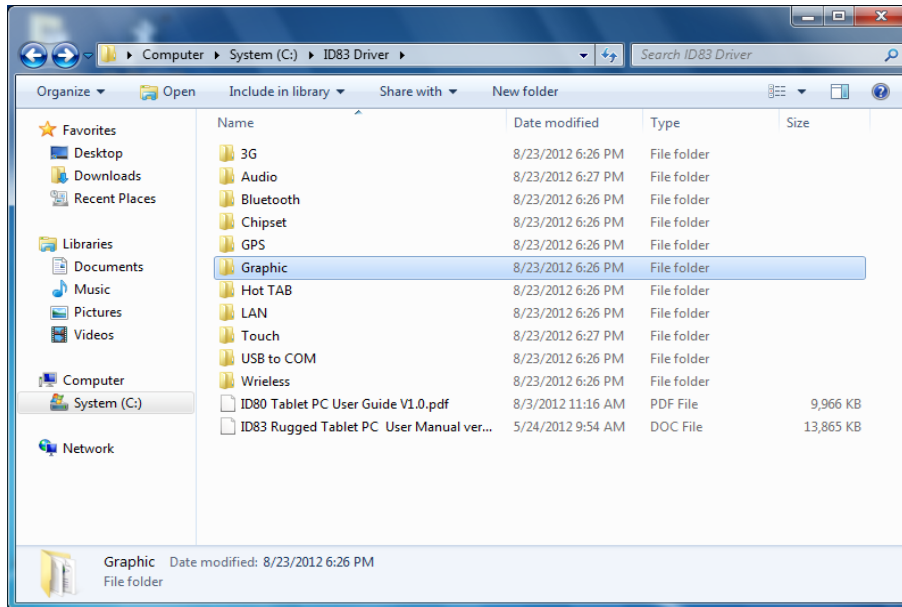




3.2 Graphic Driver Installation

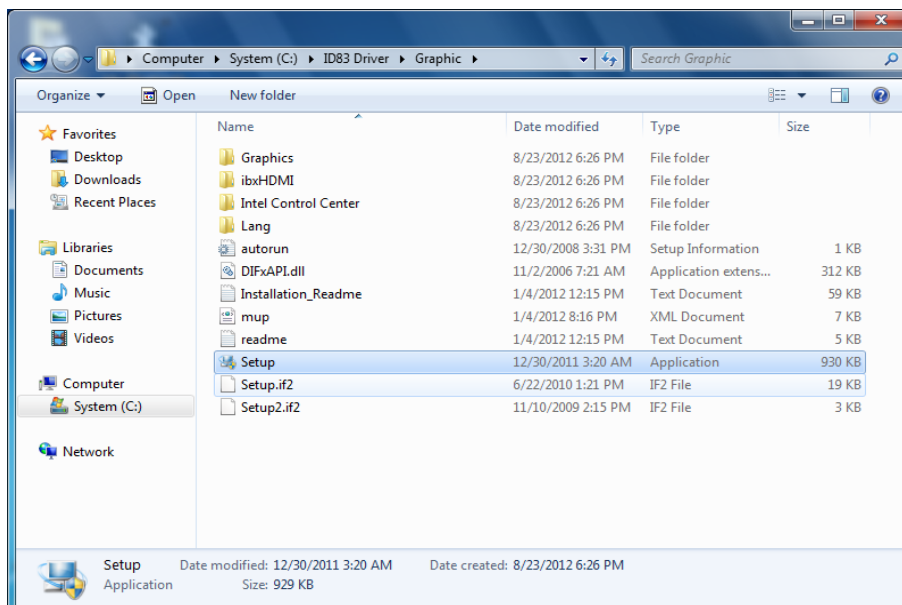
The system is equipped with Intel NM10 Chipset. The Intel Graphic Drivers should be installed first, and it will enable “Video Controller (VGA compatible). Follow the instructions below to complete the installation. You will quickly complete the installation.

1. Open the file document “Graphic “from C:\drivers folder.



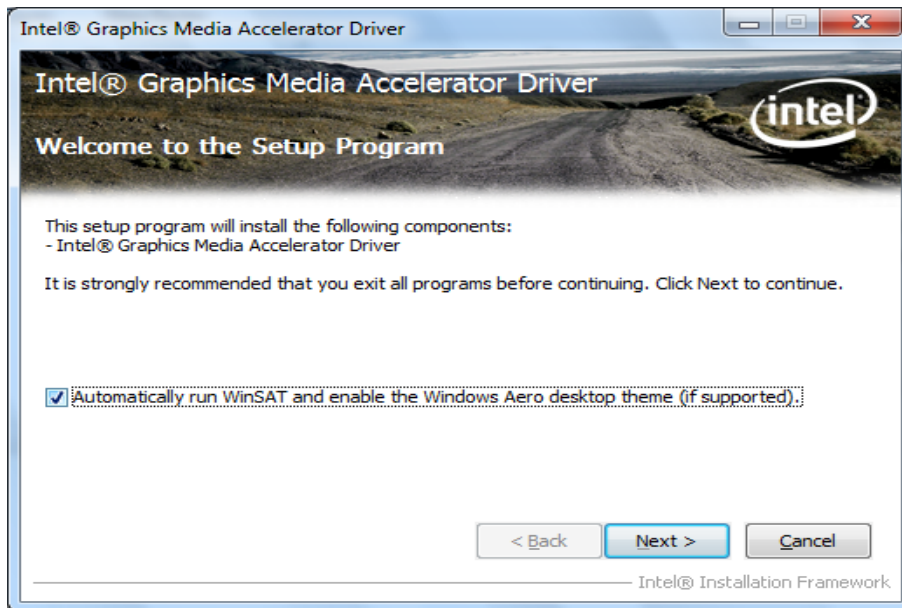
2. Click on

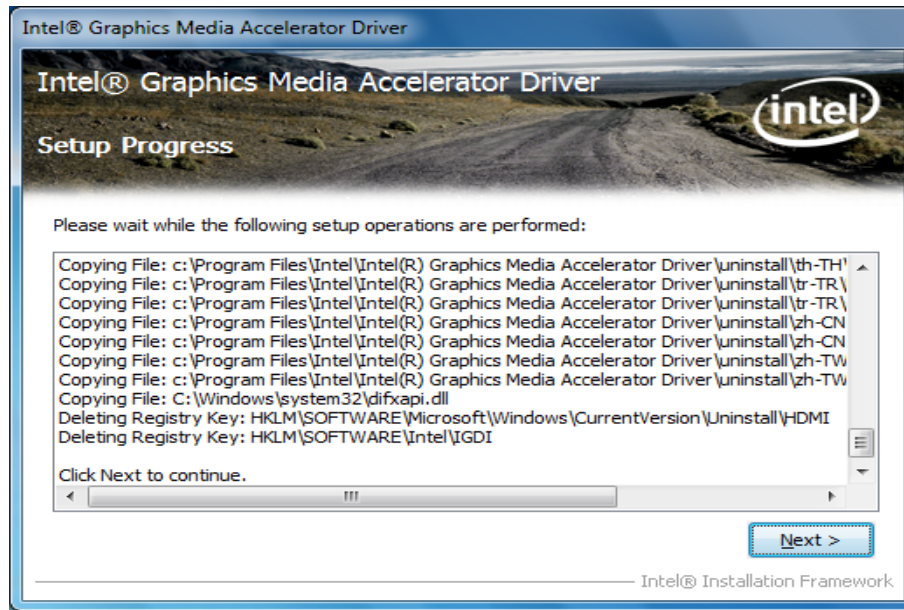
“Setup.exe” to execute the setup.



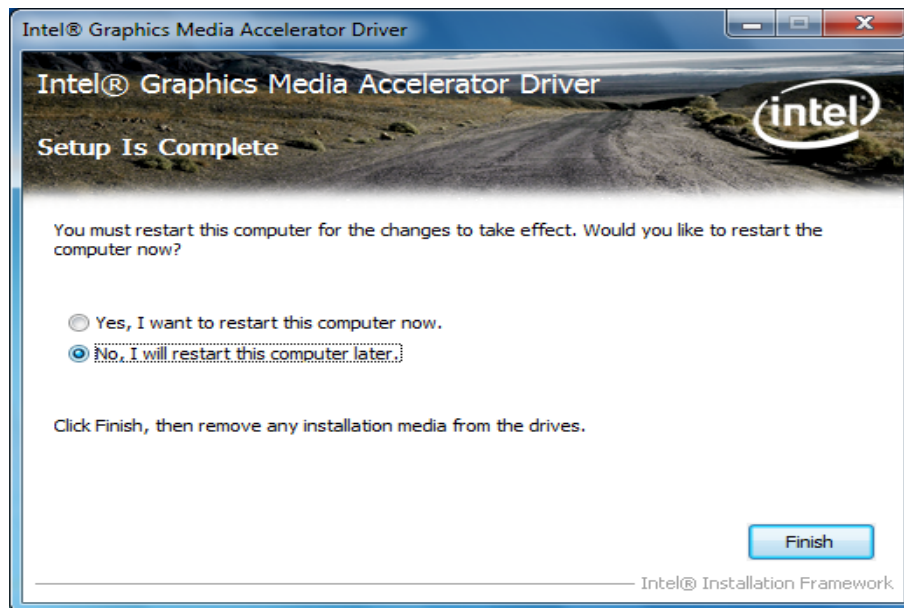


3. Click on "Next" to install Driver.





4. Click on “Yes, I want to restart this computer now” to go on.

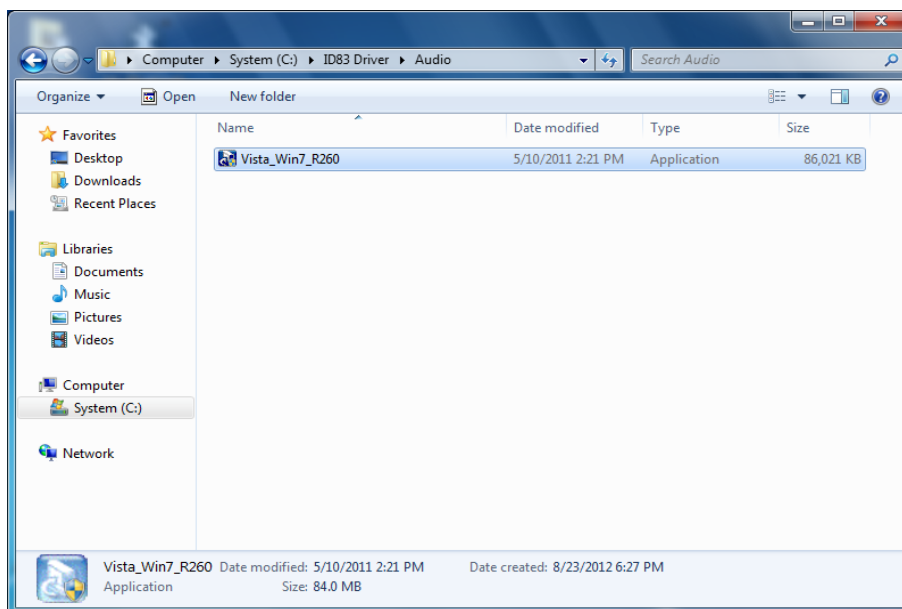
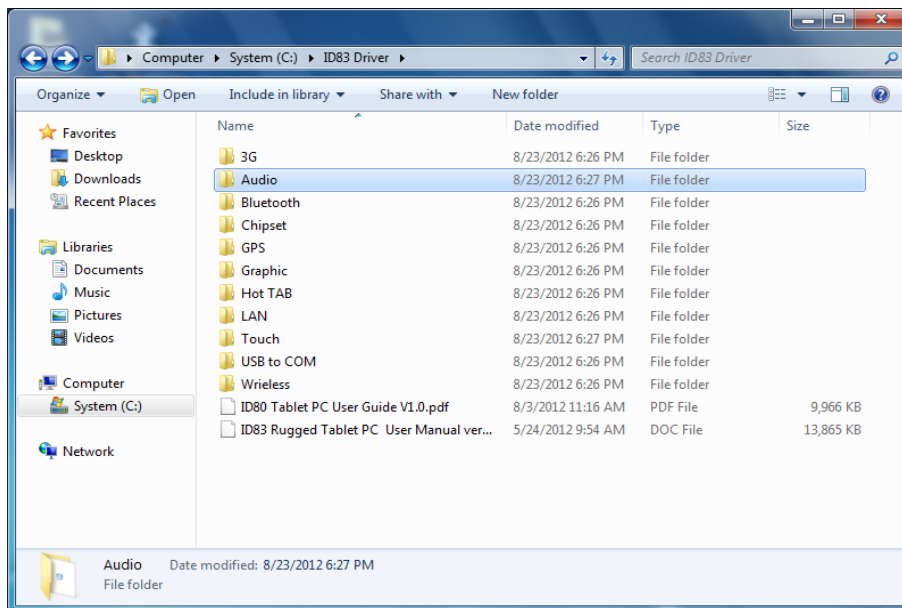




3.3 Audio Driver Installation

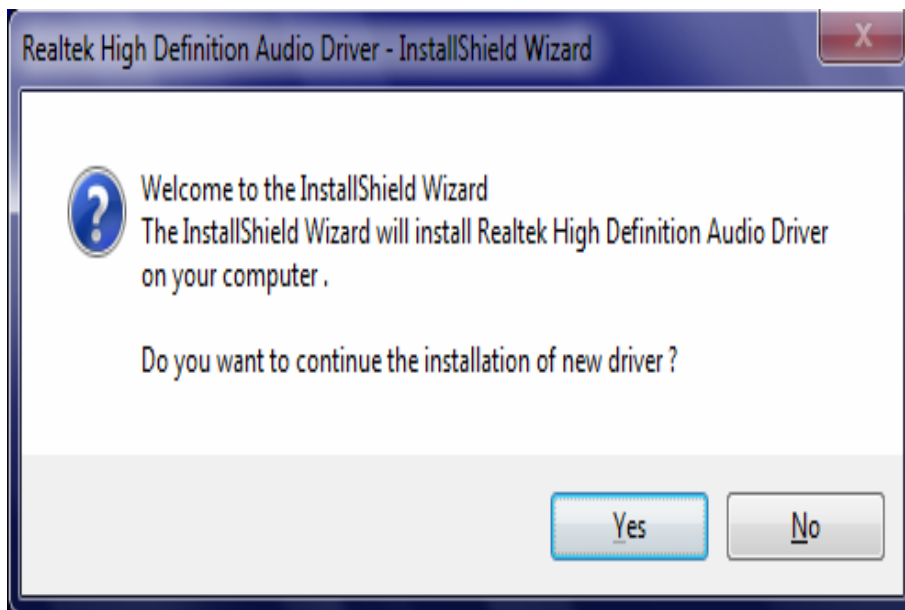
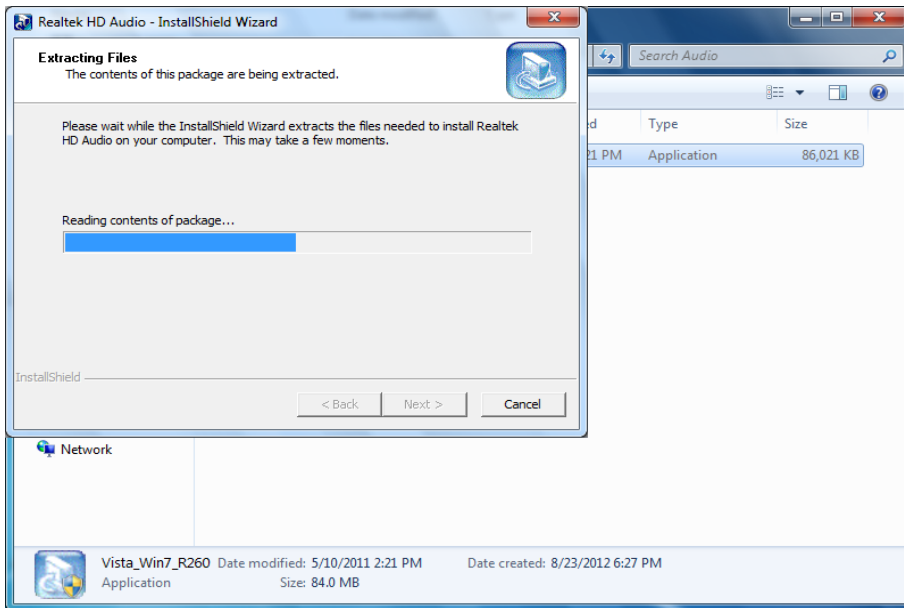
The system is equipped with the Realtek ALC886 HD Audio Codec designed for PC multimedia systems, including host/soft audio and AMR/CNR-based designs.

1. Open the file document “Audio” and click on “Vista_Win7_R260.exe” from C:\drivers folder to execute the setup.



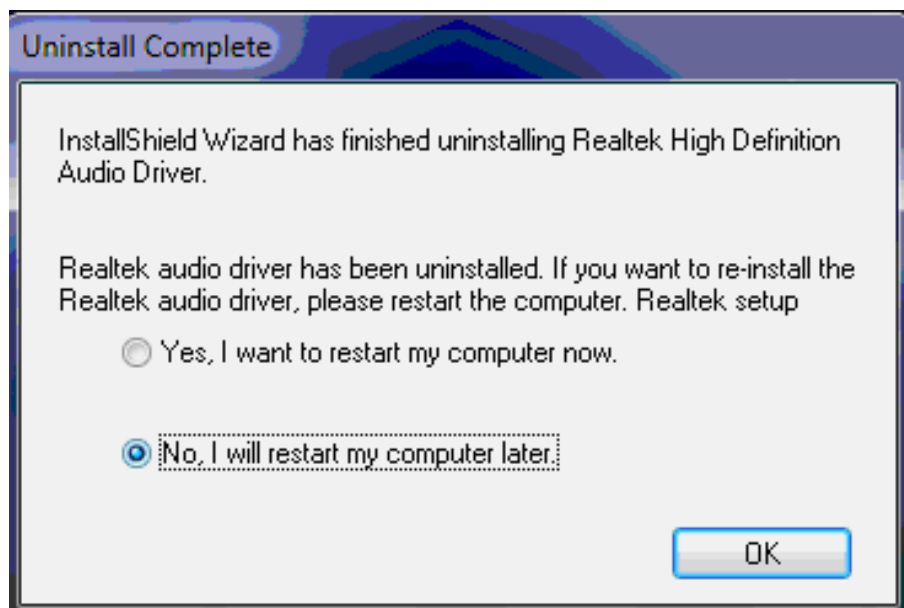
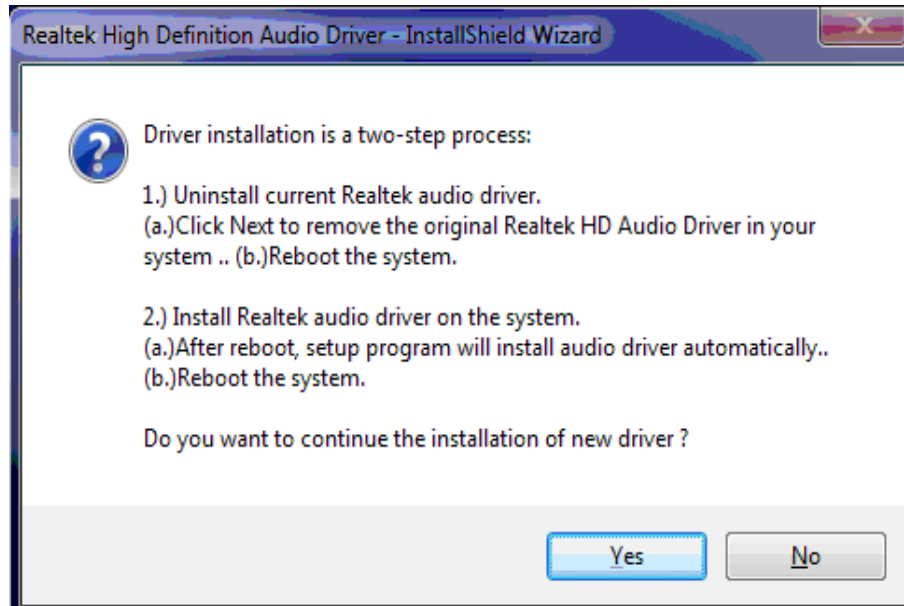


2. Click on "Next" to install driver.





3. Click on “Yes, to continue the installation and then click on” Yes, I want to restart my computer now” to finish installation.

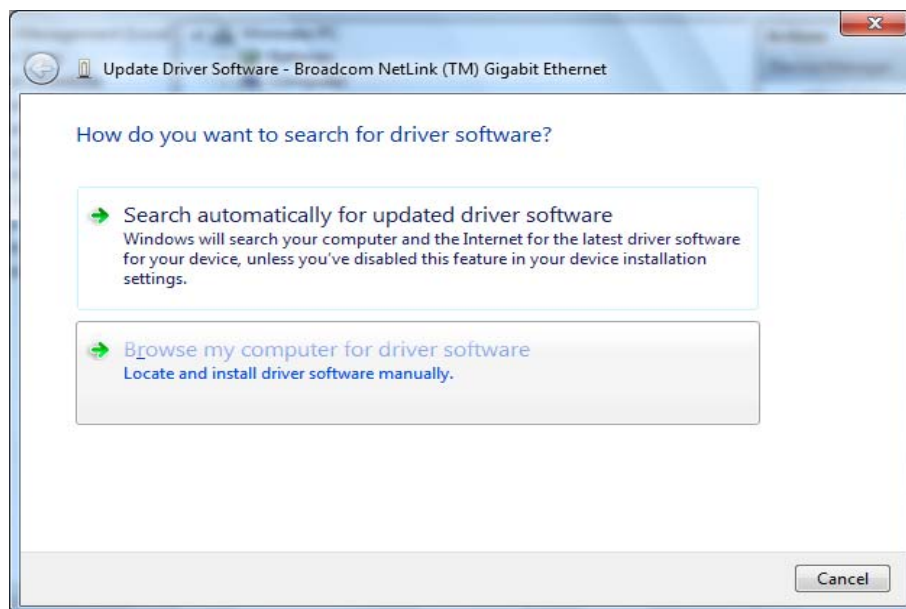
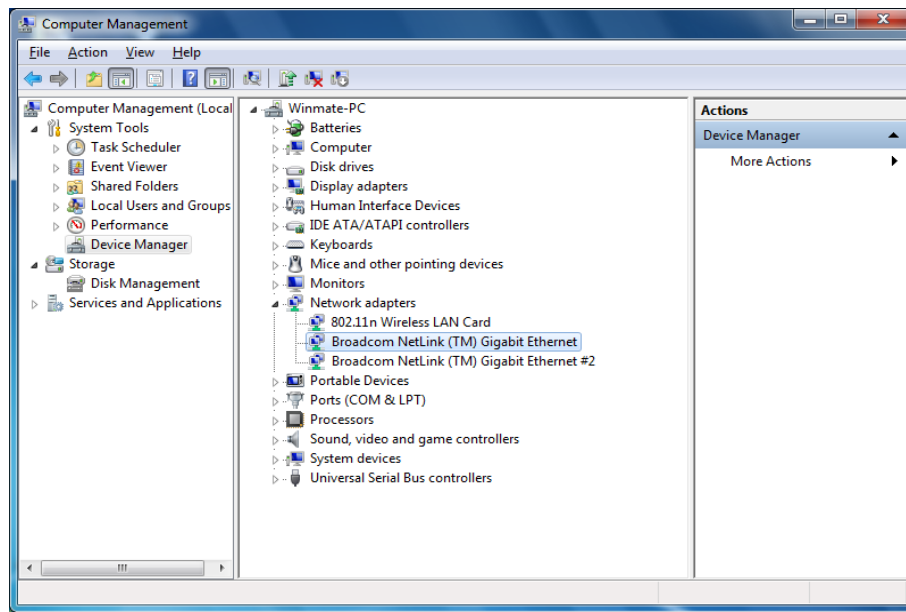




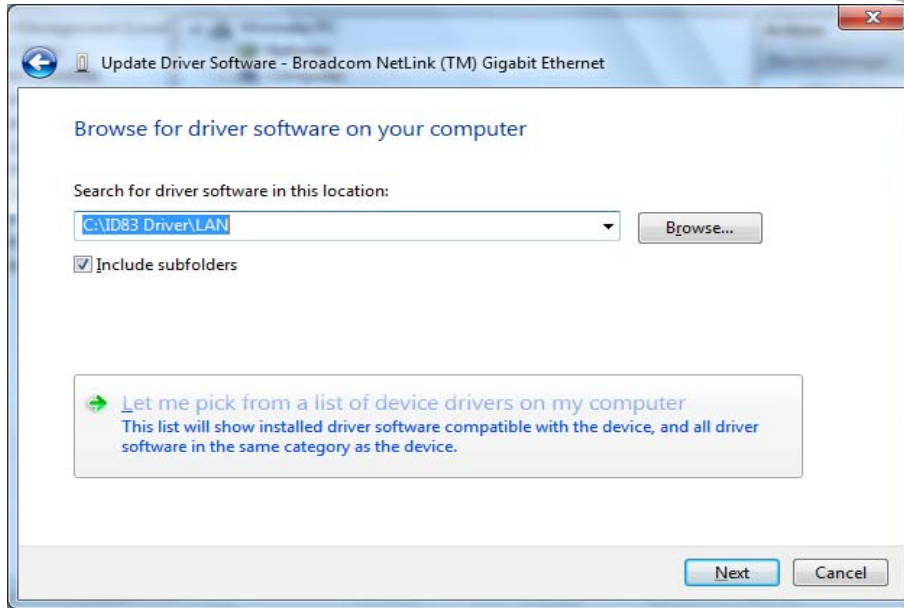
3.4 LAN Driver Installation

Follow the steps below to complete the installation of the LAN drivers. You will quickly complete the installation.

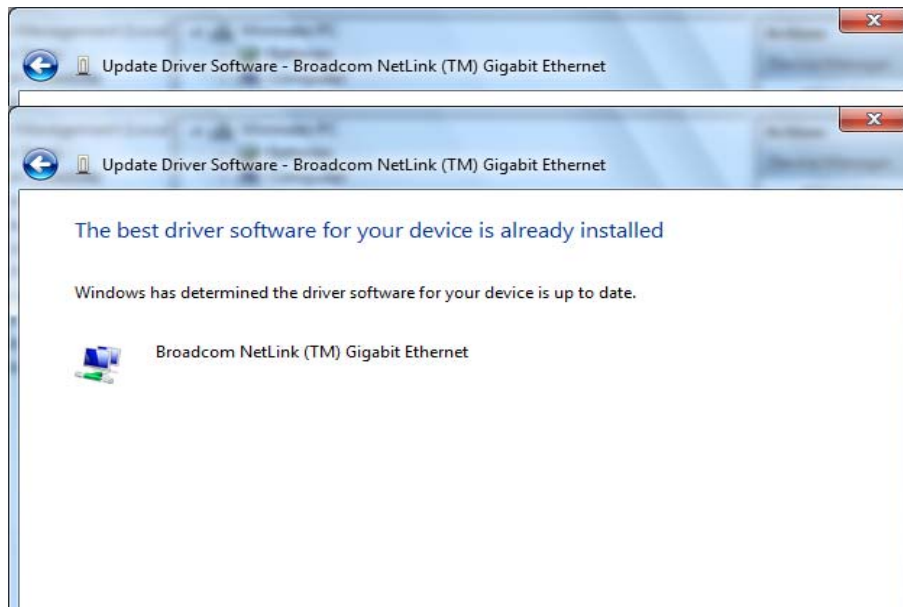
1. In the Device Manager menu, select LAN device, and right click select update driver



2. Open the file document "LAN".



3. Select the correct file in the document and click on open to execute the setup.

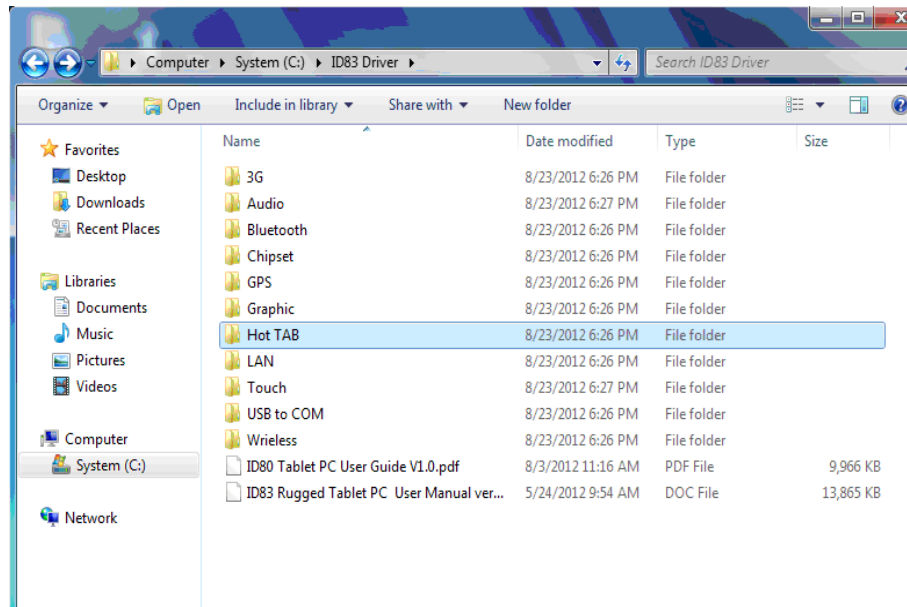




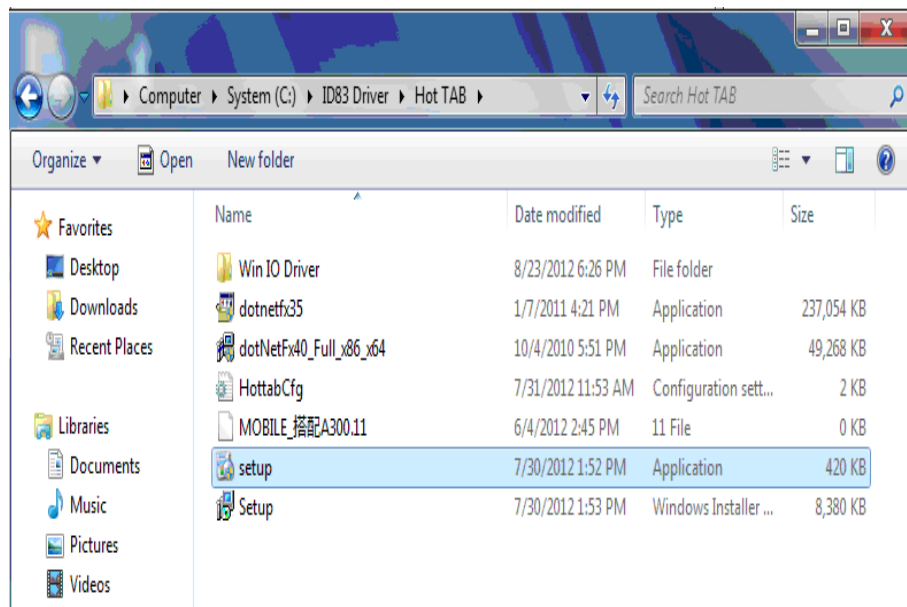
3.5 HotTab Utility Installation

With our HotTab software application utility, user can very easy to control and program their usual hotkey for help their job.

1. Open the file document “Hot TAB” from C:\drivers folder.
Press the Setup.exe to execute the installation program.



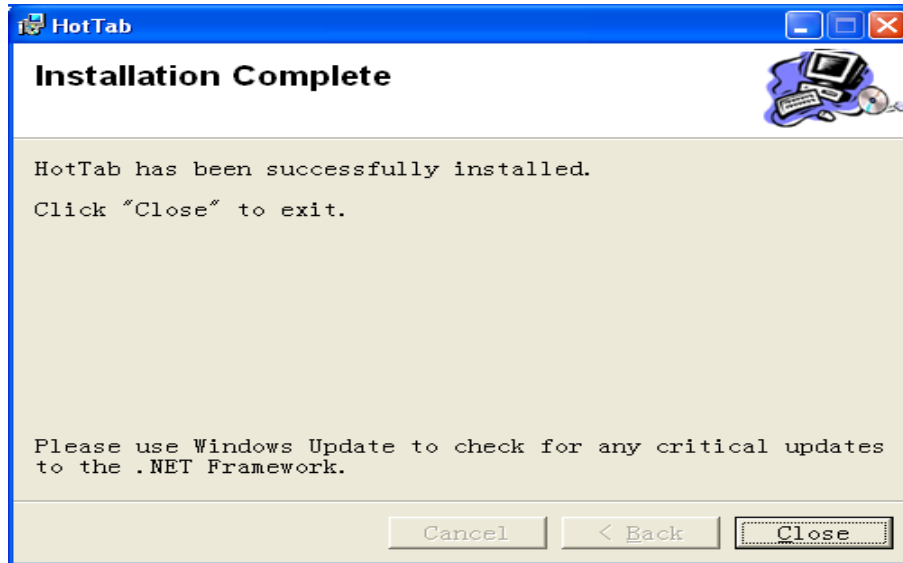
2. Click on “Setup.exe” to start to the installation.



handheld



3. Click "Close" to finish the installation.

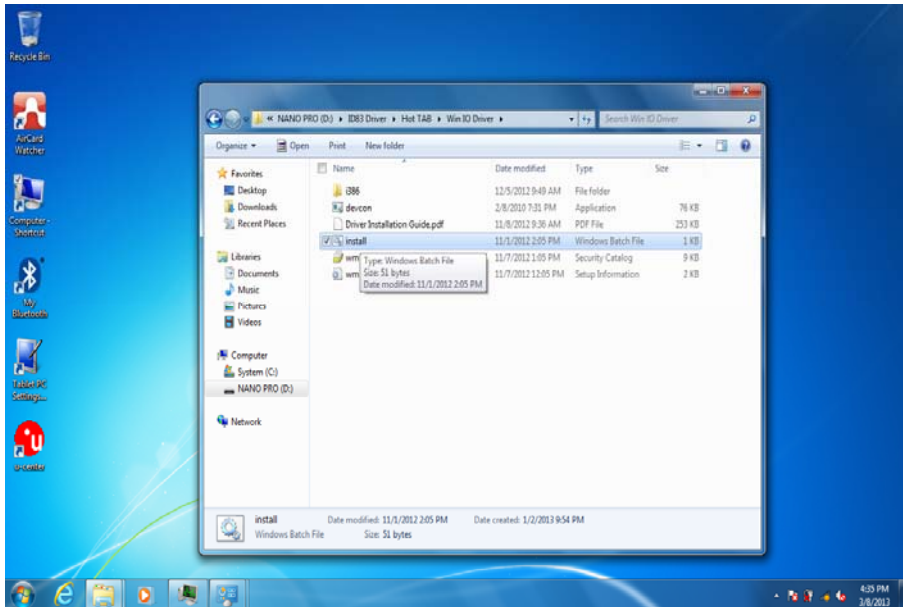




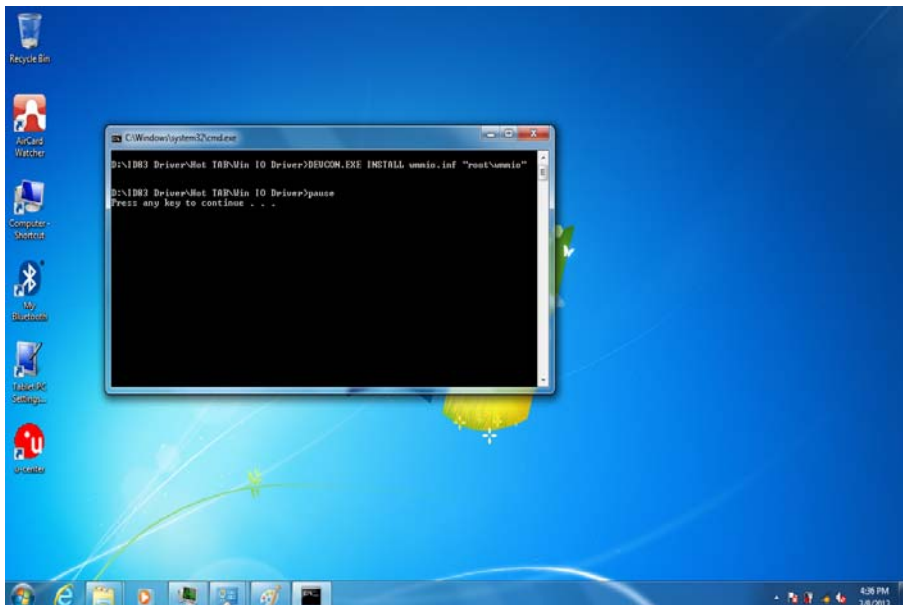
3.6 HotTab Driver Installation

Following the step by step to finish the driver installation

1. Open the file document Win IO Driver” from C:\drivers folder.
Press the Install.bat to execute the installation program.



2. Press any key to complete the driver installation.

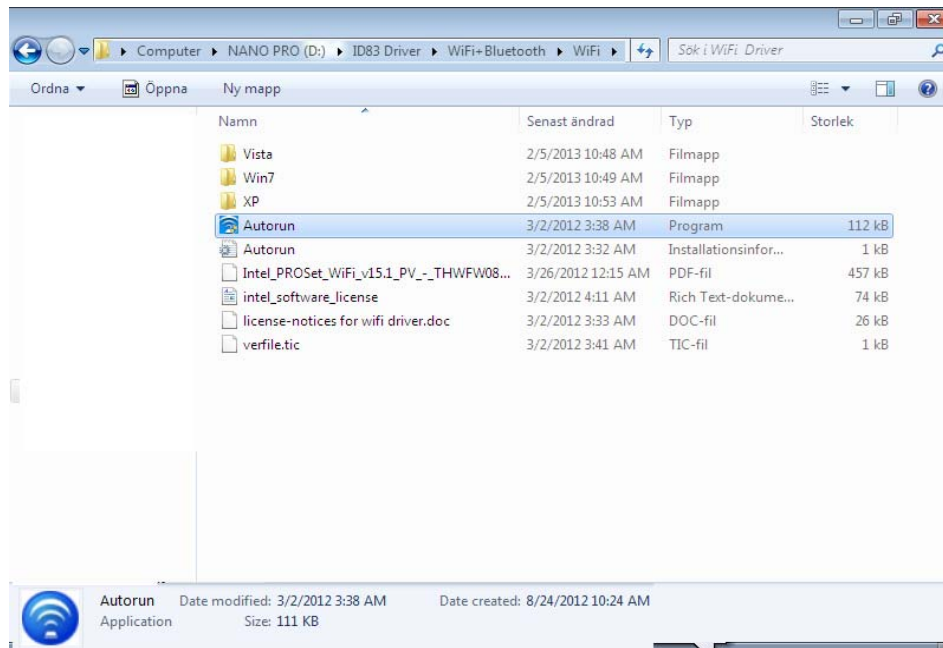




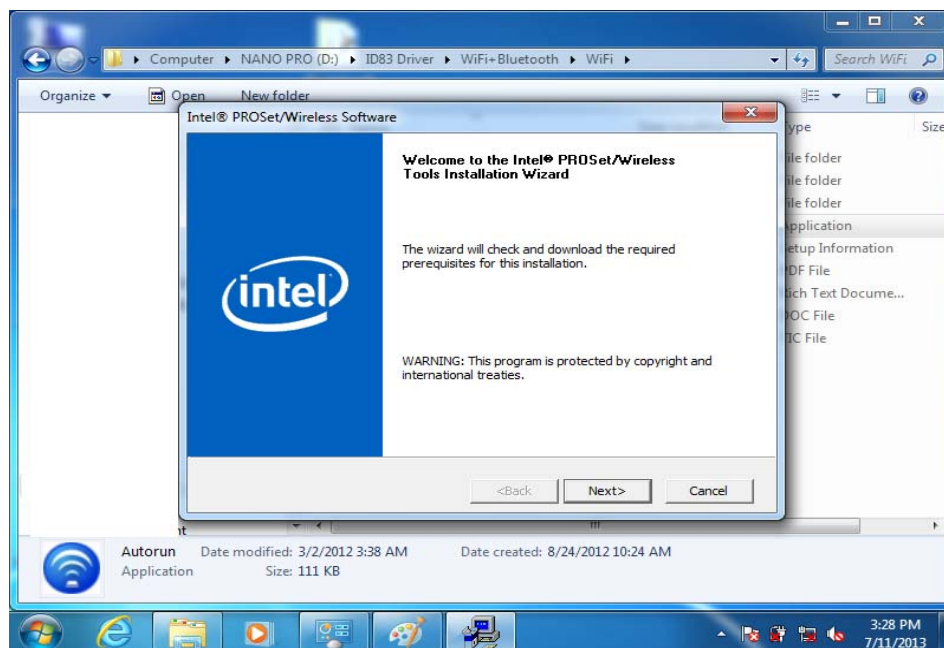
3.7 Wireless LAN Driver Installation

Following the step by step to finish the driver installation

Step.1 Insert the Driver Utility DVD. Open the file document “Wireless”. Execute “Autorun” to start the installation program.

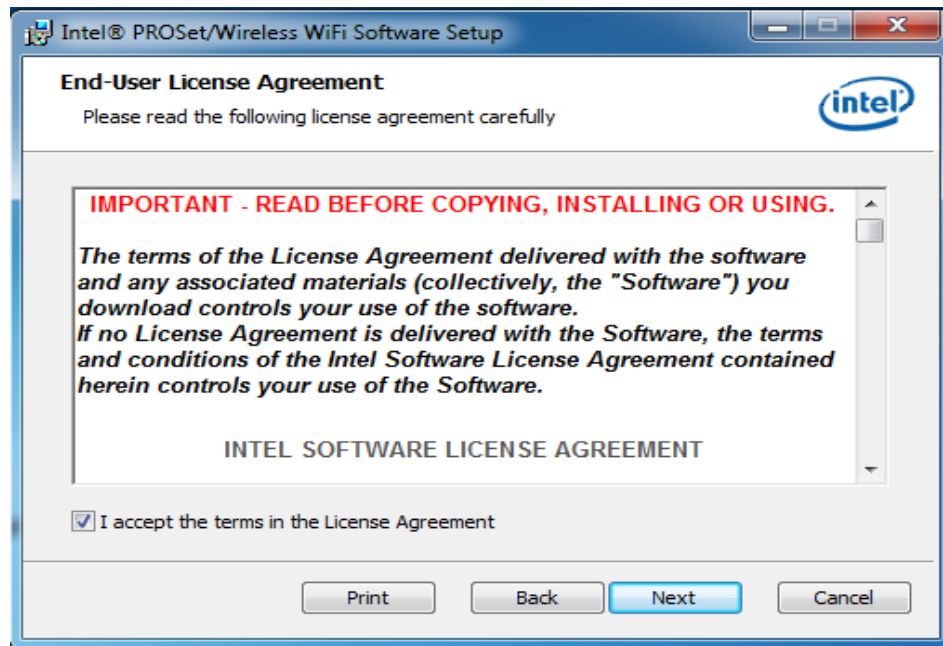


Step.2 Follow the step by step and click “Next” to start the driver installation.

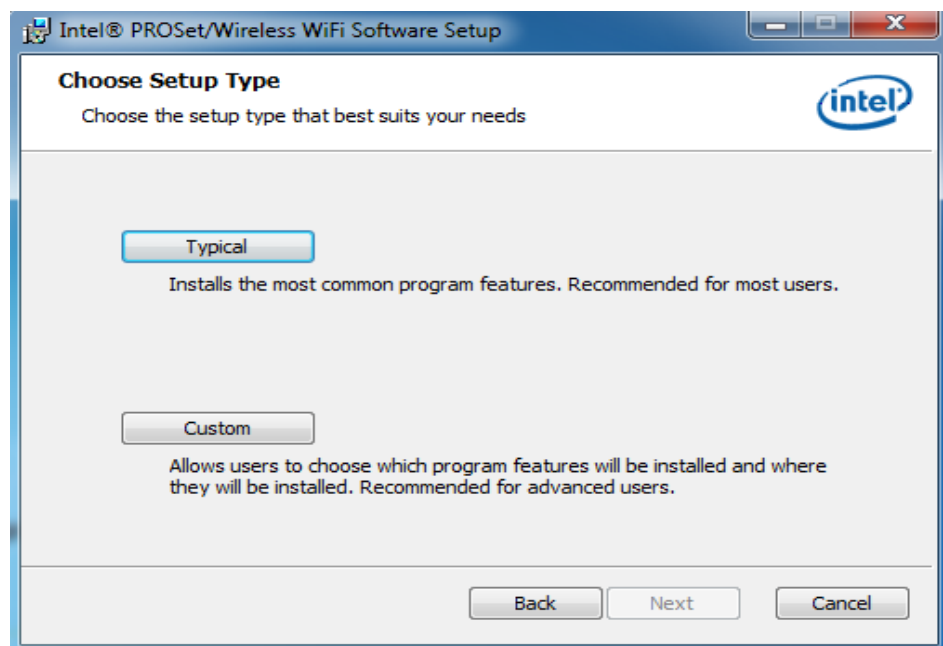




Step.3 Check the box then choose "Next".



Step.4 Choose "Typical".



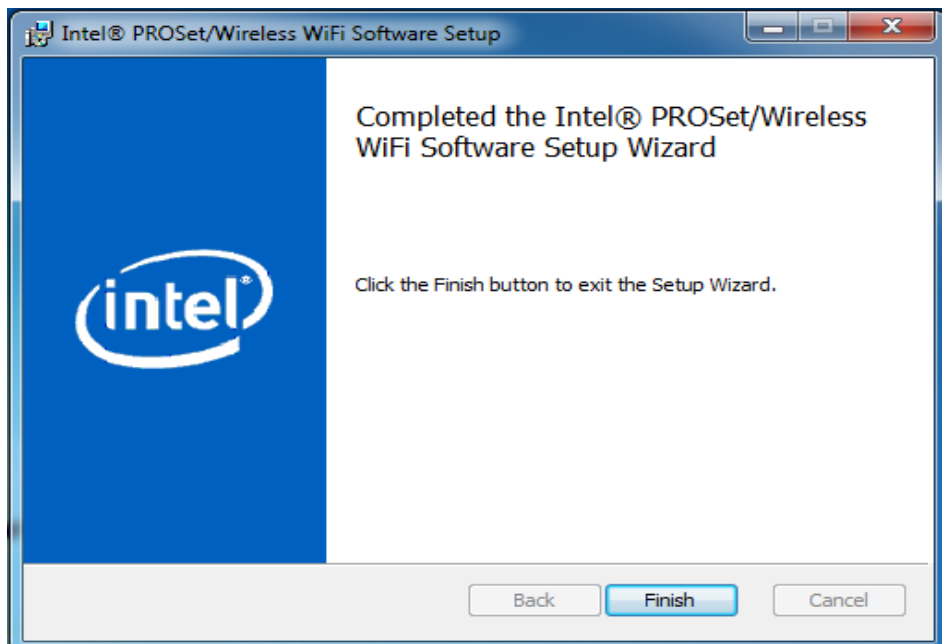
handheld



Step.5 Press "Install" to start the driver installation.



Step.6 Press "Finish" to complete the driver installation.

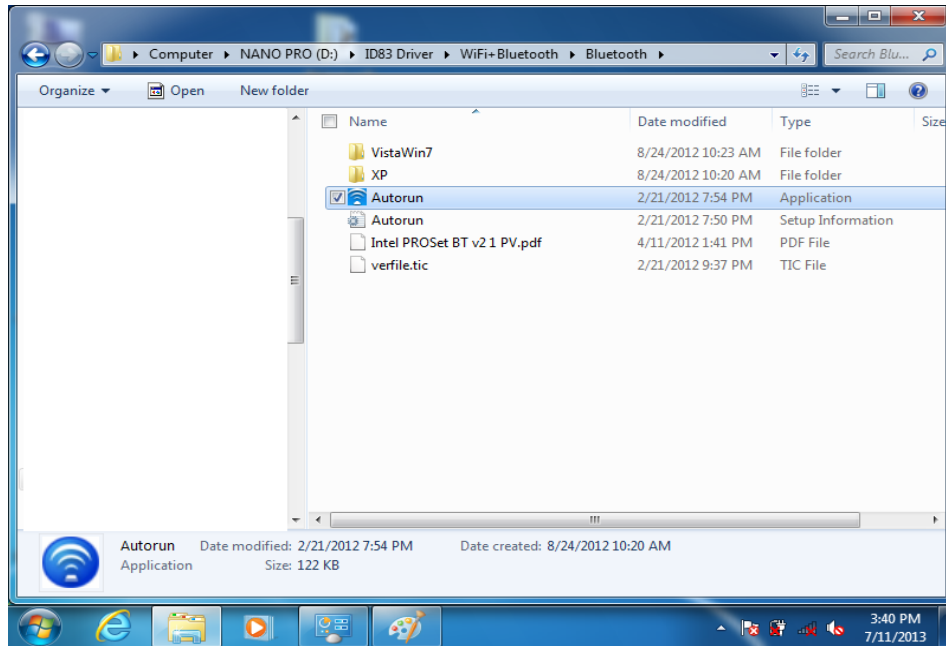




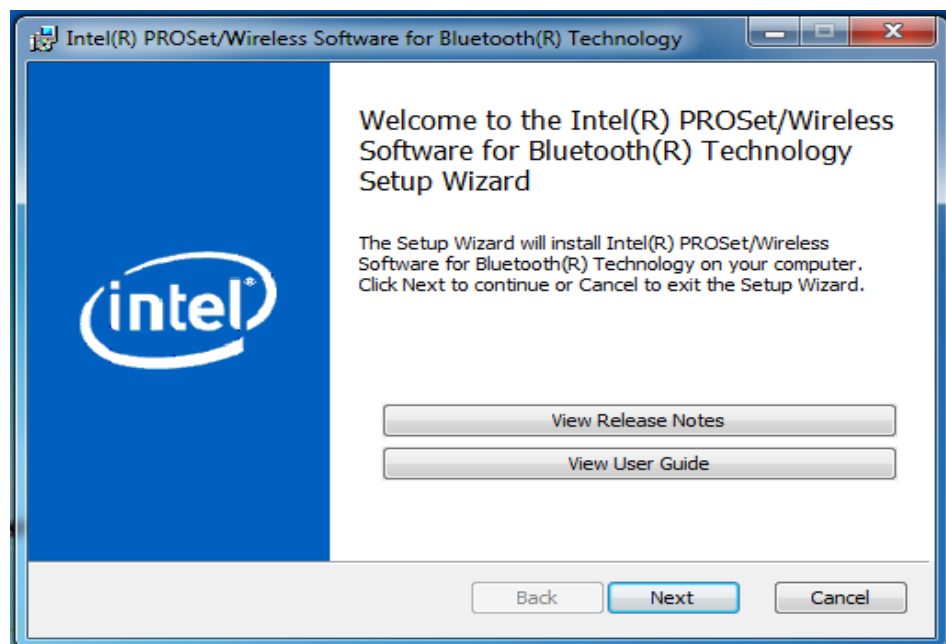
3.8 Bluetooth Driver Installation.

Following the step by step to finish the driver installation

Step.1 Insert the Driver Utility DVD. Open the file document “Bluetooth”. Press “Autorun” to execute the installation program.

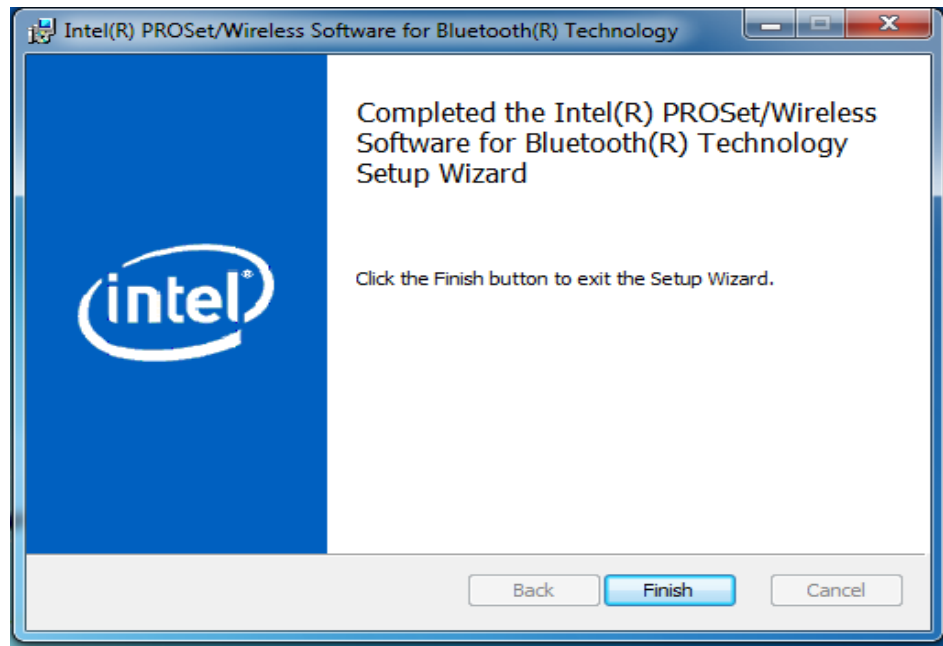


Step.2 Follow the step by step and click “Next” to start the driver installation.





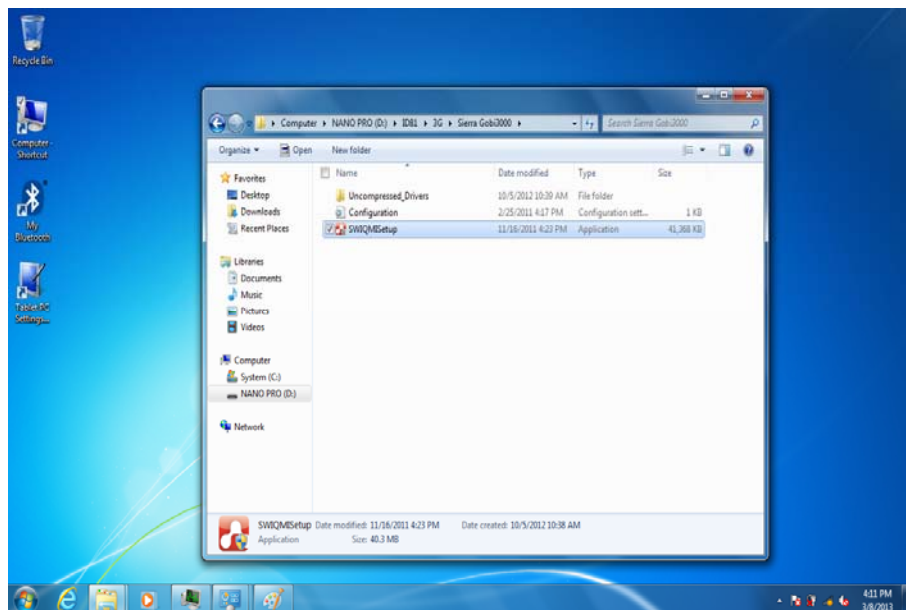
Step.3 Press “Finish” to complete the driver installation



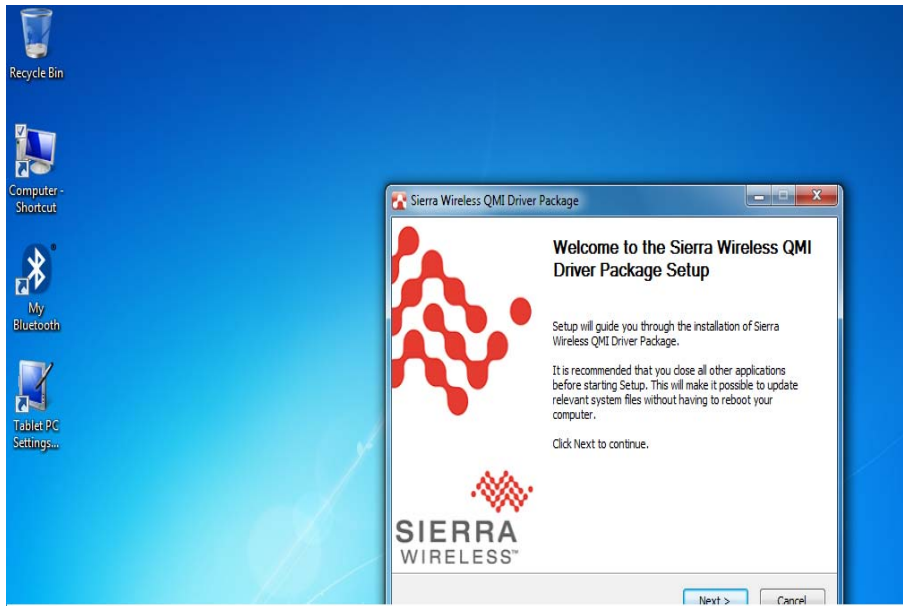
3.9 WWAN Module Driver Installations

Following the step by step to finish the driver installation

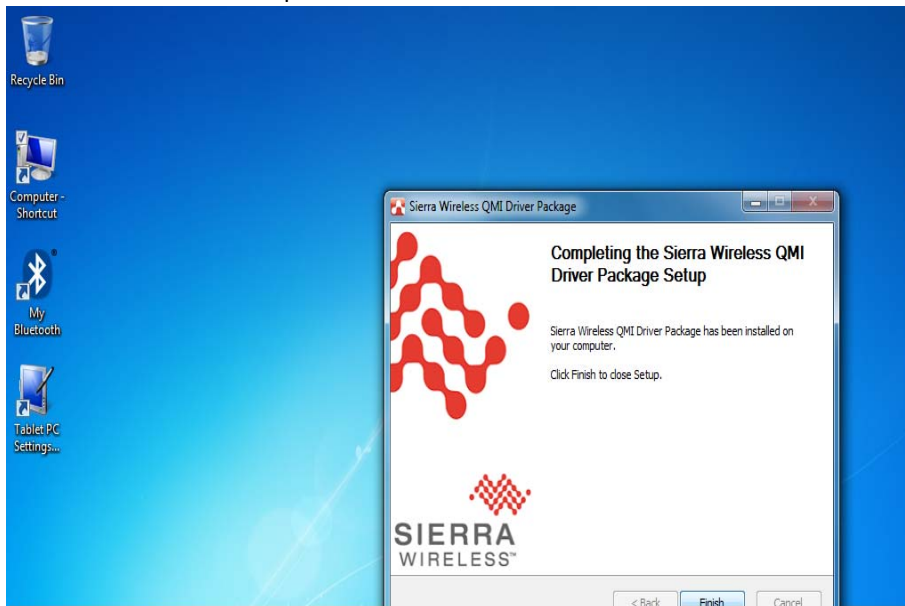
1. Open the file document “[WWAN](#)” from C:\drivers folder.
Press “SWIQMISetup.exe” to execute the installation program.



handheld



2. Press "Finish" to complete the installation

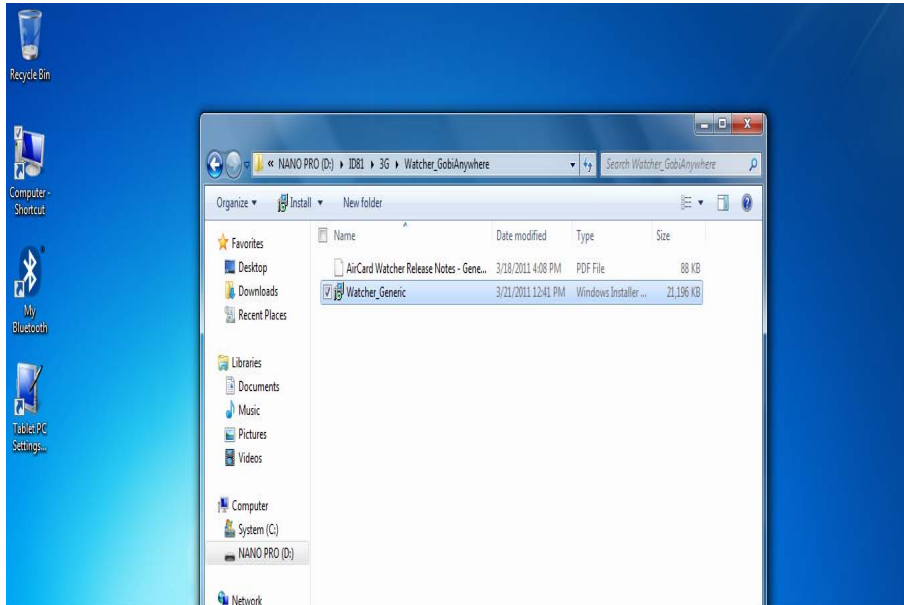




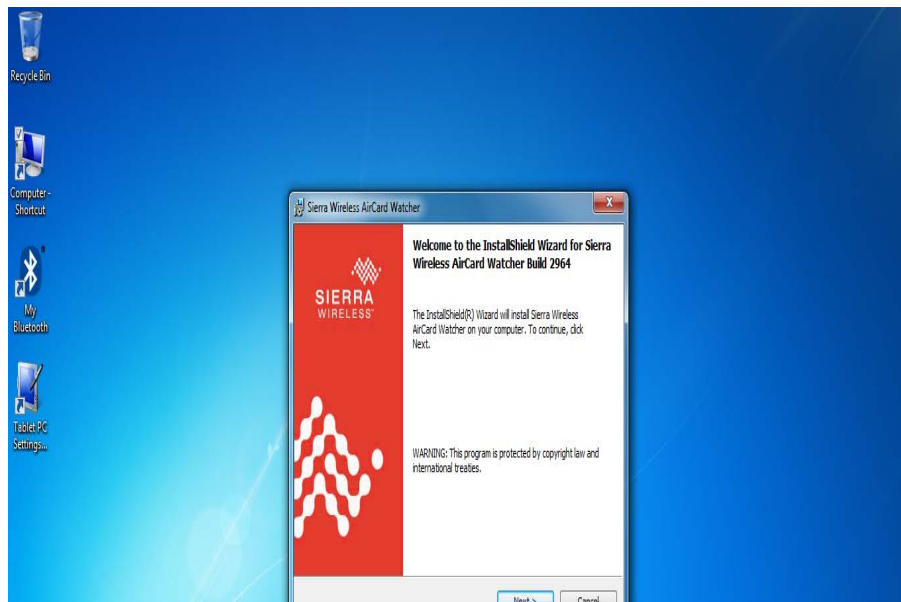
3.10 AirCard Watcher Installations

Following the step by step to finish the AirCard Watcher installation

1. Open the file document “Watcher_GobiAnywhere” from C:\drivers folder. Press “Watcher_Generic.msi” to execute the installation program.

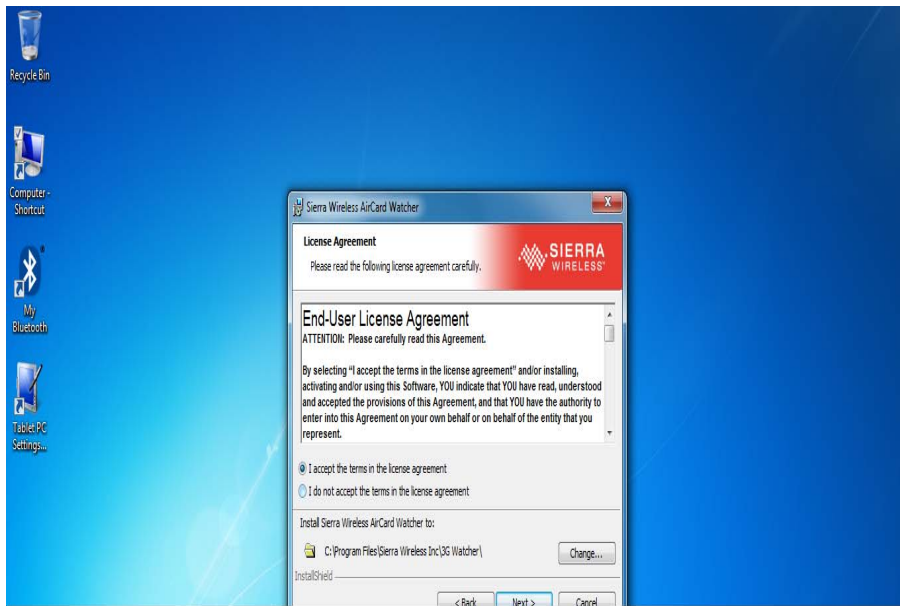


2. Select the “Next” to next step.

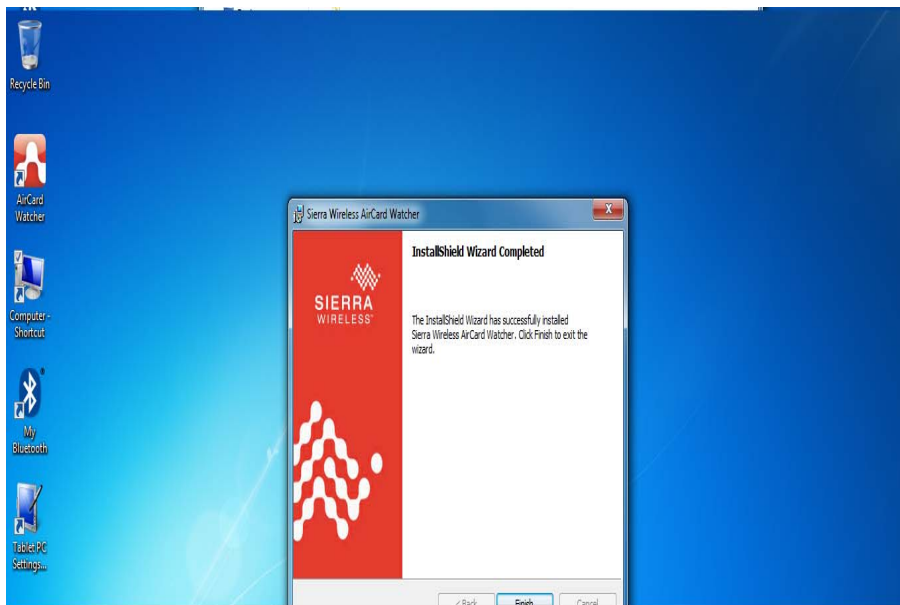




3. Press “Next” to install the driver.



4. Click “Finish” to complete the installation.

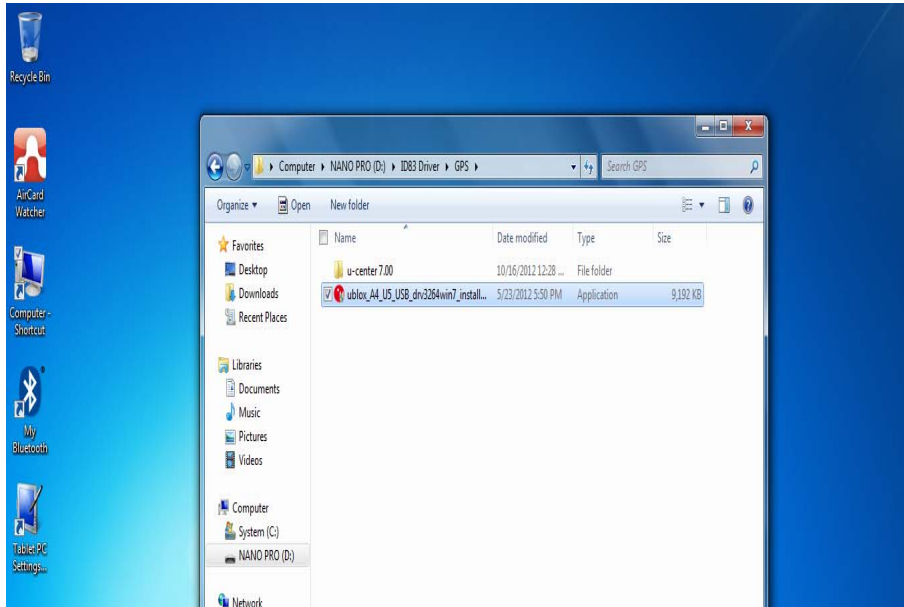




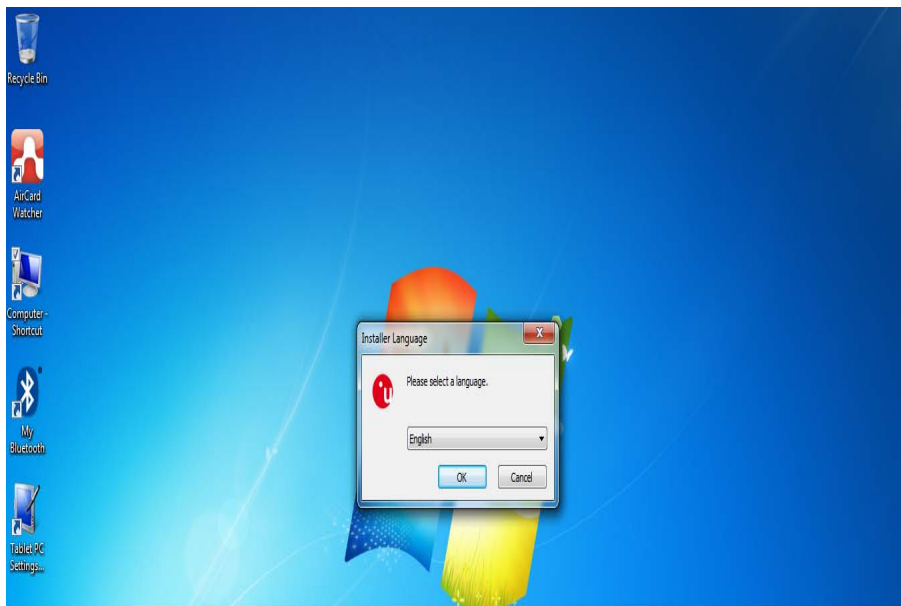
3.11 GPS Driver Installations

Following the step by step to finish the driver installation

1. Open the file document “GPS”. Press “ublox_A4_U5_USB_drv3264win7_install_UI.exe” to execute the installation program.

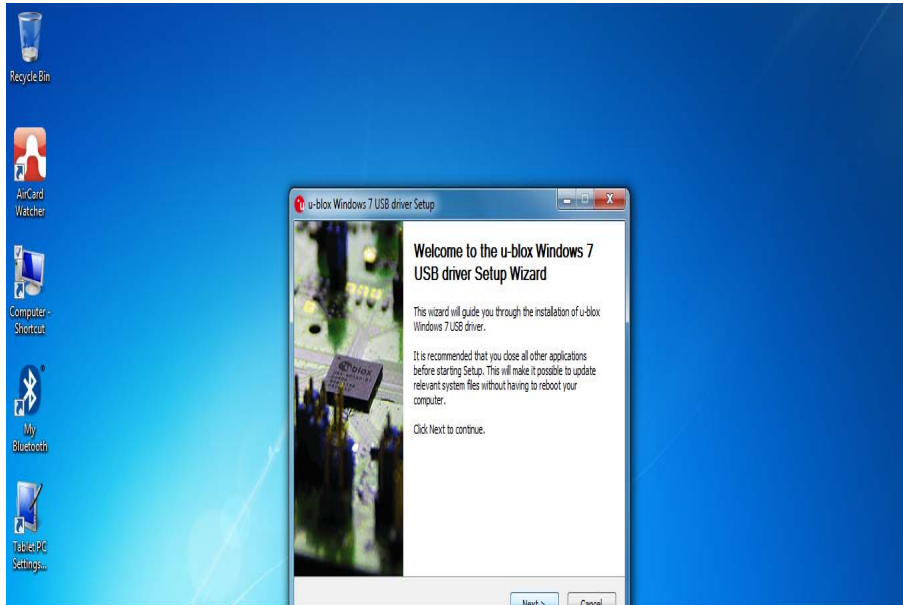


2. Select the “English” and click the “ok” to next step.

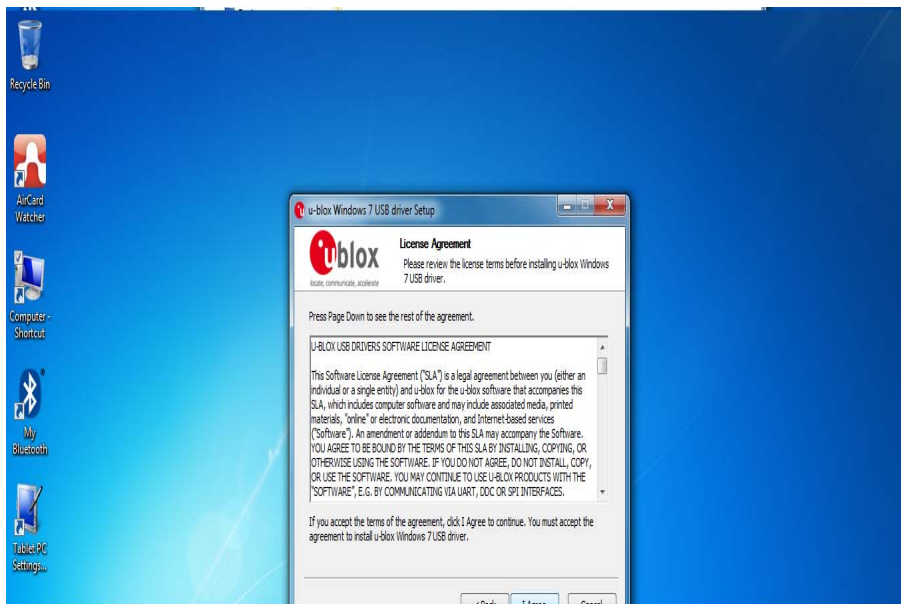


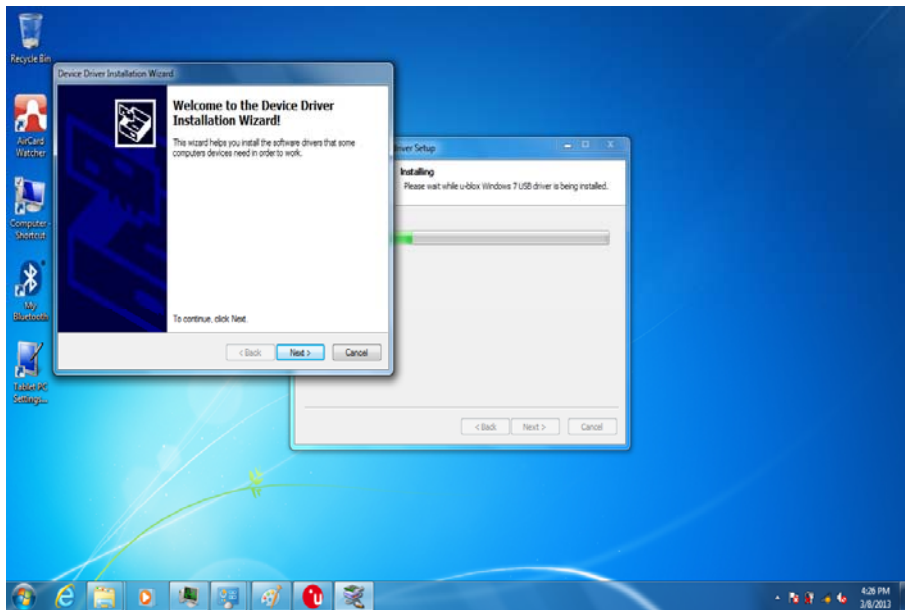
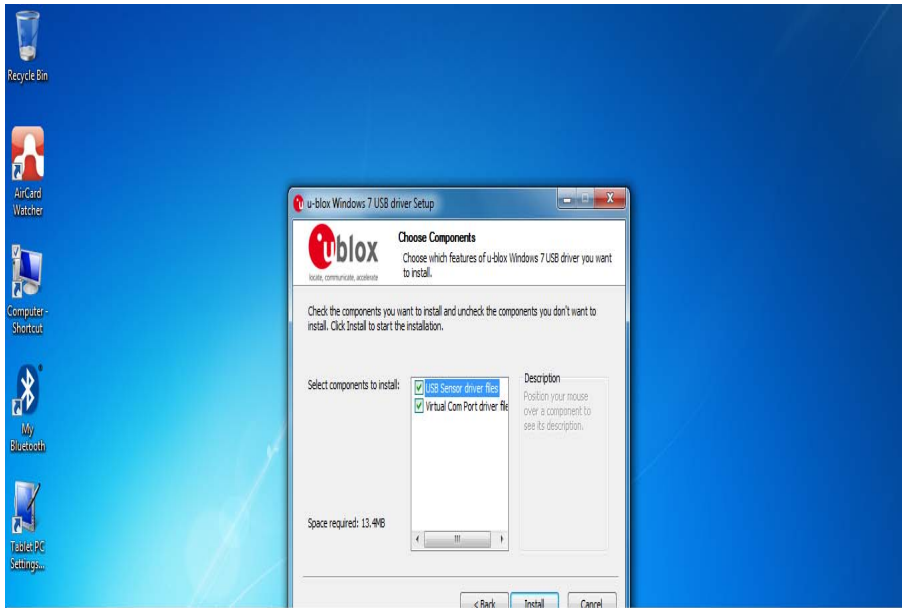


3. Press "Next" to install the driver.



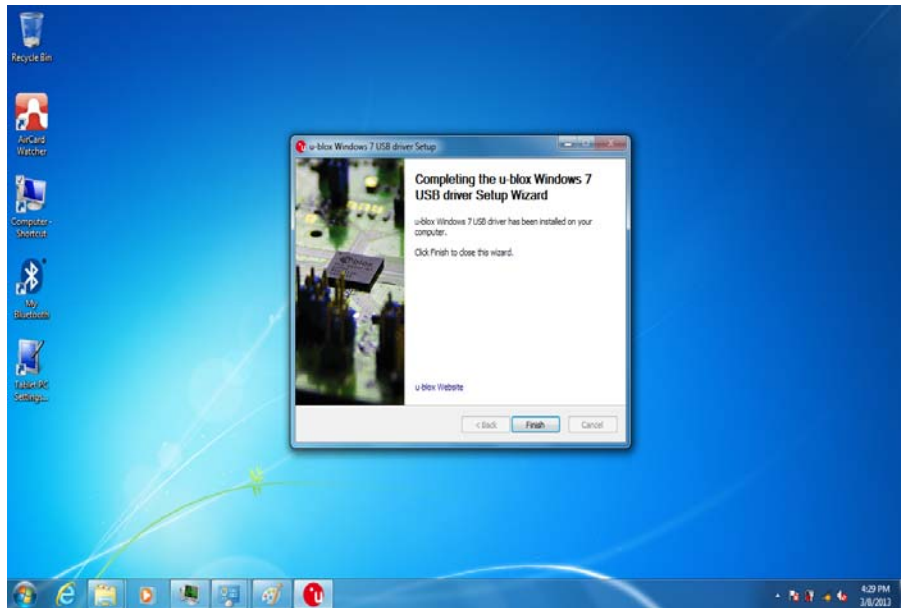
4. Press "I Agree" to install the driver.





handheld

5. Click “Finish” to complete the installation.

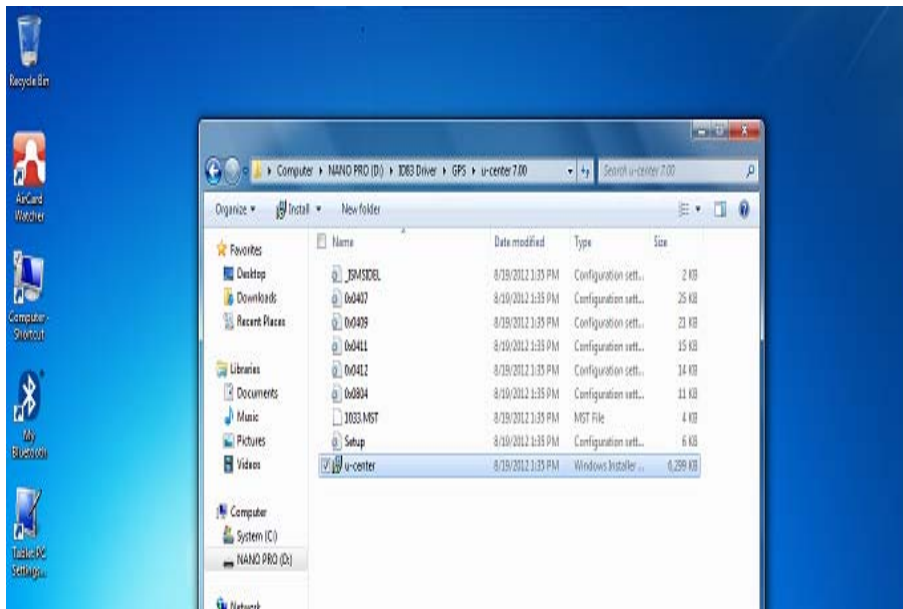




3.12 U-Center Installations

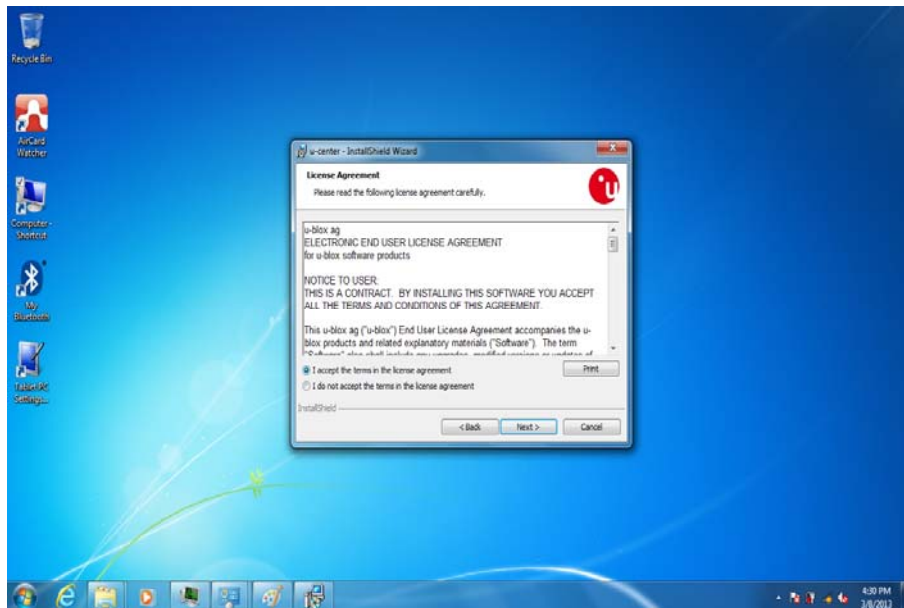
Following the step by step to finish the U-Center installation

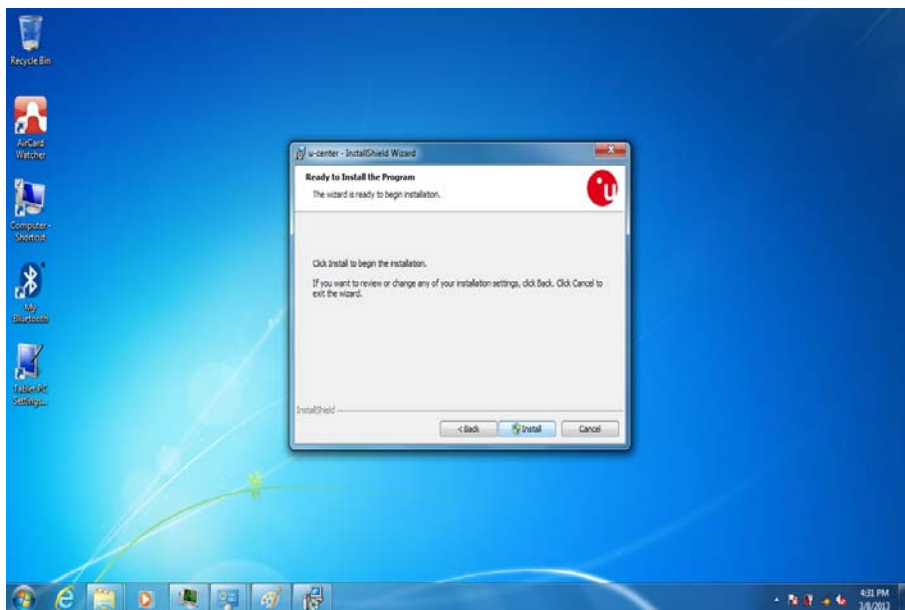
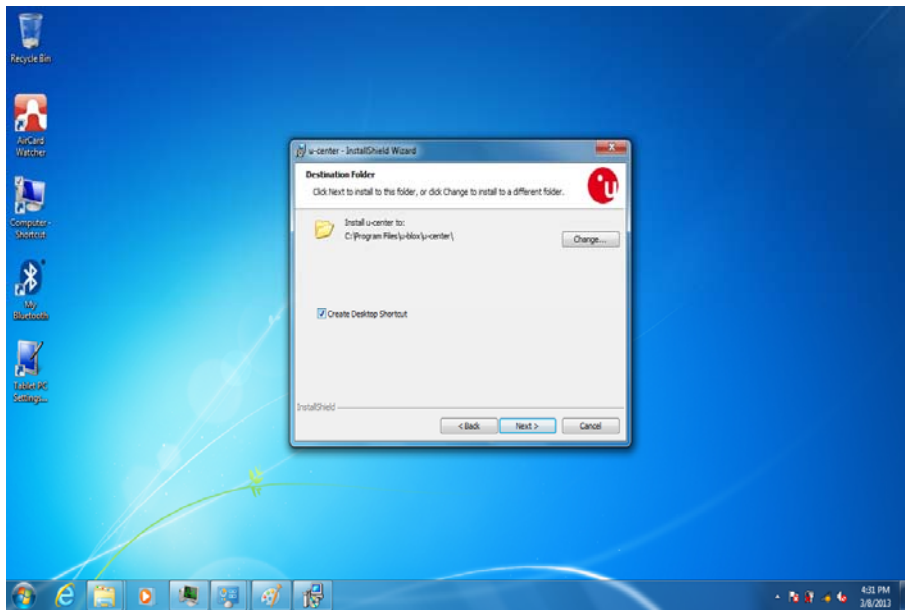
1. Open the file document “/GPS/u-center 7.00”. Press “u-center.msi” to execute the installation program.



2. Press

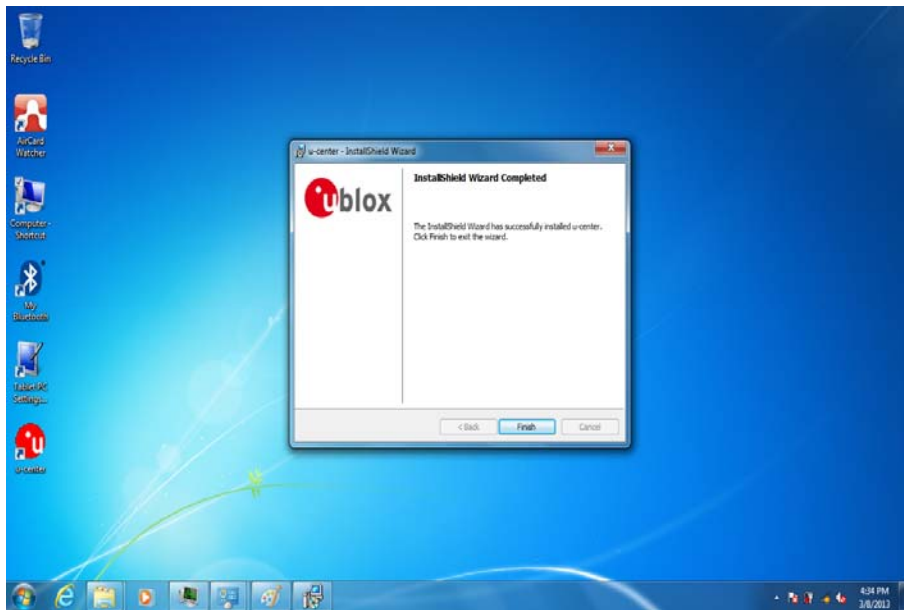
“Next’ to install the program.





handheld

3. Click “Finish” to complete the installation.



handheld



Chapter 4

Caring Your Tablet

PC



CHAPTER 4 Caring your tablet pc

4.1 Battery Protection Tips

- It is recommended temperature range for charging the battery pack between $-5^{\circ}\text{C} \sim 35^{\circ}\text{C}$.
- To avoid harm to the battery, recharge the battery pack when it is nearly discharged. When recharging, make sure that the battery pack is fully charged.
- The battery pack is a consumable product and the following conditions will shorten its life:
 - ◆ Frequently charging the battery pack
 - ◆ When using, charging, or storing the battery in high temperature condition
- To avoid hastening the deterioration of the battery pack thereby prolonging its useful life, minimize the number of times you charge it so as not to frequently increase its internal temperature.
- A higher environment temperature will cause the battery pack's temperature to rise. Avoid charging the battery pack inside a closed vehicle and in hot weather condition. Also, charging will not start if the battery pack is not within the allowed temperature range.
- It is recommended that you do not charge the battery pack more than once a day.
- Charging the battery pack with the system's power off is recommended.
- To maintain the battery pack's operating efficiency, store it in a cool dark place removed from the Tablet PC and with 30 % ~ 40 % charge remaining.
- Avoid installing or removing the battery pack when the Tablet PC is in Standby mode.
- Charging time will be prolonged when the Tablet PC is turned on.



4.2 Touch screen Protection Tips

- Avoid using excessive force to the display, when use the finger or the included touch screen stylus pen on the display, **the recommended force can not over 200gf.**
- Besides the included stylus, using a sharp or metallic object may cause scratches and damage the display, thereby causing errors.
- Wipe the touch screen with a clean, soft, lint-free cloth.
- Using the touch screen during low temperature (less than 5 °C) may cause a slower response time, this is normal. A normal response time may be restored upon returning to room temperature.
- When there is noticeable discrepancy in the operation of the touch screen function (wrong location on intended operation or improper display resolution), refer to the Windows operating system for instructions on recalibrating the touch screen display.



4.3 Troubleshooting from A to L

A. Battery Problem

Condition	Check Point
The battery does not charge (Battery Charge indicator does not light orange).	<ul style="list-style-type: none"> ● Make sure that the AC adapter is properly connected. ● Make sure that the battery is not too hot or cold. Allow time for the battery pack to return to room temperature. ● Make sure that the battery pack is installed correctly. ● Make sure that the battery terminals are clean.

B. Bluetooth Transmission Problem

Condition	Check Point
I cannot connect to another device with Bluetooth wireless technology.	<ul style="list-style-type: none"> ● Make sure that both devices have activated Bluetooth feature. ● Make sure that the distance between the two devices are not over 10 meters or that there are no walls or other obstructions between the devices. ● Make sure that the other device is not in "Hidden" mode. ● Make sure that both devices are compatible.

C. Display Problem

Condition	Check Point
Nothing appears on the screen.	<ul style="list-style-type: none"> ● During operation, the screen may automatically turn off as a result of power management. Press any key to see if the screen comes back. ● The brightness level might be too low. Increase brightness by pressing the button.

D. Date/Time Problems

Condition	Check Point
The date/time is incorrect.	<p>Correct the date and time via the operating system or BIOS Setup program.</p> <p>After you have performed everything as described above and still have the incorrect date and time every time you turn on the tablet PC, the RTC (Real-Time Clock) battery is at the end of its life. Call an authorized dealer to replace the RTC battery.</p>



E. SSD Problem

Condition	Check Point
The SSD error message appears on the screen.	<ul style="list-style-type: none"> The SSD has defects. Ask your dealer for help.
The SSD operations seem slow.	<ul style="list-style-type: none"> The data files stored on the SSD may be fragmented. Use a tool such as Window's Disk Defragmenter to defragment the files.
The SSD indicator glows without blinking.	<ul style="list-style-type: none"> The data files stored on the SSD may be fragmented. Use a tool such as Window's Disk Defragmenter to defragment the files.

F. LAN Problem

Condition	Check Point
I cannot access the network.	<ul style="list-style-type: none"> Make sure that the LAN cable is properly connected to the RJ-45 connector and the network hub. Make sure that the network configuration is appropriate. Make sure that the user name or password is correct.

G. Power Management Problems

Condition	Check Point
The Tablet PC does not enter Standby or Hibernation mode automatically.	<ul style="list-style-type: none"> If you have a connection to another computer, the Tablet PC does not enter Standby or Hibernation mode if the connection is actively in use. Make sure that the Standby or Hibernation time-out is enabled.
The Tablet PC does not enter Standby or Hibernation mode immediately.	<ul style="list-style-type: none"> If the Tablet PC is performing an operation, it normally waits for the operation to finish.
The Tablet PC does not resume from Standby or Hibernation mode.	<ul style="list-style-type: none"> The Tablet PC automatically enters Standby or Hibernation mode when the battery pack is



	<p>empty.</p> <ul style="list-style-type: none"> ● Do any one of the following: <ul style="list-style-type: none"> - Connect the AC adapter to the Tablet PC. - Replace the empty battery pack with a fully charged one.
--	--

H. Startup Problems

Condition	Check Point
When you turn on the Tablet PC, it does not respond and the Power indicator does not light green.	<ul style="list-style-type: none"> ● If you are using an external AC power, make sure that the AC adapter is correctly and securely connected. If so, make sure that the electrical outlet works properly. ● If you are using the battery power, make sure that the battery is not discharged. ● Wait awhile.
When you turn on the Tablet PC, it stops after POST.	<ul style="list-style-type: none"> ● Restart your Tablet PC.

I. Sound Problems

Condition	Check Point
No sound is produced.	<ul style="list-style-type: none"> ● Make sure that the volume control is not set too low. Increase volume by pressing the button. ● Make sure that the Tablet PC is not in Standby mode. ● If using an external speaker, make sure that the speaker is properly connected.
Distorted sound is produced.	<ul style="list-style-type: none"> ● Make sure that the volume control is not set too high or too low. In most cases, a high setting can cause the audio electronics to distort the sound.
The external audio device does not work.	<ul style="list-style-type: none"> ● Make sure that your Tablet PC is equipped with the driver needed. ● Click the speaker symbol on the taskbar and check the Windows volume control. ● Check the volume control of your tablet PC.



J. Wireless LAN Problem

Condition	Check Point
I cannot use the wireless LAN feature.	<ul style="list-style-type: none"> ● Make sure that the wireless LAN feature is turned on.
Transmission quality is poor.	<ul style="list-style-type: none"> ● Your Tablet PC may be in an out-of-range situation. Move your Tablet PC closer to the Access Point or another wireless LAN device it is associated with. ● Check if there is high interference around the environment and solve the problem as described next.
Radio interference exists.	<ul style="list-style-type: none"> ● Move your Tablet PC away from the device causing the radio interference such as microwave oven and large metal objects. ● Plug your Tablet PC into an outlet on a different branch circuit from that used by the affecting device. ● Consult your dealer or an experienced radio technician for help.
I cannot connect to another wireless LAN device.	<ul style="list-style-type: none"> ● Make sure that the wireless LAN feature is turned on. ● Make sure that the SSID setting is the same for every wireless LAN device in the network. ● Your Tablet PC is not recognizing changes. Restart the Tablet PC. ● Make sure that the IP address or subnet mask setting is correct.
I cannot communicate with the computer in the network when Infrastructure mode is configured.	<ul style="list-style-type: none"> ● Make sure that the Access Point your Tablet PC is associated with is powered on and all the LEDs are working properly. ● If the operating radio channel is in poor quality, change the Access Point and all the wireless station(s) within the BSSID to another radio channel. ● Your Tablet PC may be in an out-of-range situation. Move your Tablet PC closer to the Access Point it is associated with. ● Make sure that your Tablet PC is configured with the same security option (encryption) to the Access Point. ● Use the Web Manager/Telnet of the Access Point to check whether it is connected to the network.

handheld



	<ul style="list-style-type: none">● Reconfigure and reset the Access Point.
I cannot access the network.	<ul style="list-style-type: none">● Make sure that the network configuration is appropriate.● Make sure that the user name or password is correct.● You have moved out of range of the network.● Turn off power management.

4.4 Appendix

A.COM PORT Define

