

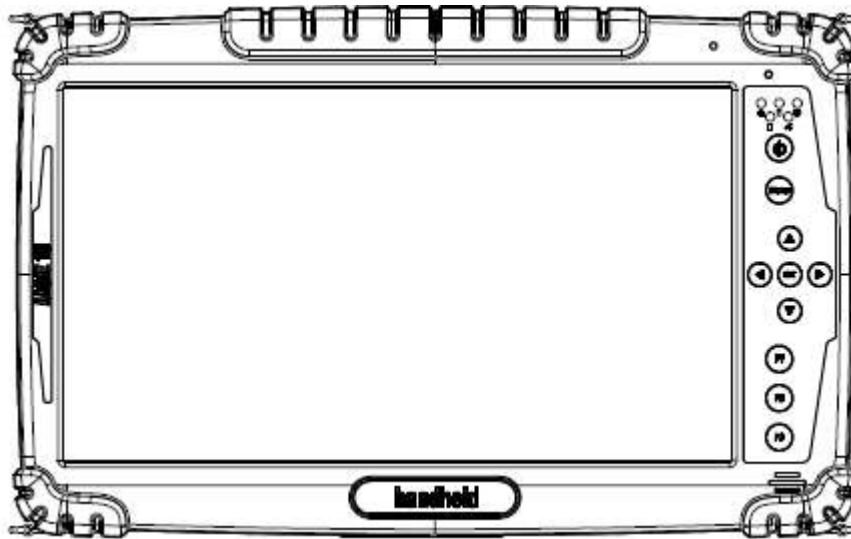
handheld

ALGIZ 10X User's Manual



ALGIZ 10X

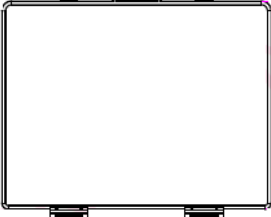



User's Manual V1.0

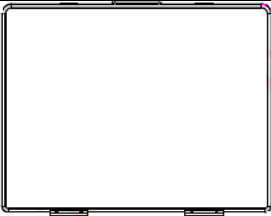


handheld



Accessory

Item	Description	Note
Default Packing Accessories		
	1 piece of 2 Cell Li-Ion Battery Pack	
	1 piece of 12V Adapter w/ Standard Power Cord. Euro / U.S. Std type, 1.8M	
	1 piece of Windows 7 Recovery User's Guide.	With Windows 7 Ultimate embedded preinstalled
	1 piece of Rugged Tablet PC Users Manual.	

Item	Description	Note
Optional Accessories		
	1 piece of 4 Cell Li-Ion Battery Pack	



Copyright Notice

Copyright © 2012 Handheld Inc., ALL RIGHTS RESERVED. No part of this document may be reproduced, copied, translated, or transmitted in any form or by any electronic or mechanical means, for any purposes without the permission of the original manufacturer in advance.

Trademark Acknowledgement

Brand and product name are trademarks or registered trademarks of their respective owners.

Disclaimer

Handheld Inc. reserves the right to make any product changes without notice, including circuits and/or software described or contained in this manual in order to improve product design and/or performance. Handheld Inc. assumes no responsibility or liability for the use of the described product(s), conveys no license or title under any patent, copyright, or masks work rights to these products, and makes no representations or warranties that these products are free from patent, copyright, or mask work right infringement, unless otherwise specified. Applications that are described in this manual are for illustration purposes only. Handheld Inc. makes no representation or warranty that such application will be suitable for the specified use without further testing or modification.

Warranty

Handheld Inc. guarantees that all Handheld products will be free including material and workmanship defects for **one year from the invoice date**. If the customer discovers any defects, Winmate will, at its option, repair or replace the defective product without any charge to customers, and ship the returned product with prepaid transportation charges during the warranty time of one year. The returned product must be properly packaged in its original packaging to be qualified for warranty service.

If there is a time gap of over 30 days between the date marked on the serial number and the shipping date, the one-year warranty time will then activate from the shipping date. The third and fourth digits of the serial numbers stand for the manufacturing year and the fifth digit stands for the manufacturing month (e. g., with A for October, B for November and C for December). For example, the serial number 1W10Axxxxxxx means October of year 2010.

**Customer Service**

We provide service guide for any problem as follow steps :

1. Visit Handheld website www.handheldgroup.com to get the updated product information.
2. Contact with your distributor, sales representative, or our customer service center for technical support if you need further assistance. You may have the following information ready before you make the phone call :
 - Product serial number
 - Peripheral attachments
 - Software (OS, version, application software, etc.)
 - Detailed description of problems
 - The exact wording or print screen images of any error messages

In addition, free technical support is available at Winmate in every business day. We are always ready to provide guidance in terms of application requirements or specific information in terms of installation and operation of all our products. Please feel free to call or e-mail us.

Manufacturer : Handheld Inc.

Address : Handheld Group AB, Kinnegatan 17 A, S-531 33, Linkoping, Sweden

TEL : +46 (0) 510-54 71 70

FAX : +46 (0) 510-282 05



**Safety Precautions**

- Warning!



housing.

Always completely disconnect the power cord from the device before you uncover the device and work on the hardware. Do not connect the electronic device with power socket while the power is on. Sensitive electronic components can be damaged by sudden power surges. Only experienced electronics personnel are suggested to open mechanical

- Caution!



Always ground yourself to remove any static charge before touching the CPU card. The electronic devices are very sensitive to static electricity. For safety concerns, please use a grounding wrist strap all the time. Place all electronic components in a static-dissipative surface or static-shielded bag when they are outside of the chassis.

UL Safety Announcement

UL Classification: Class I mark: with respect to electronic shock; Fire and hazardous material only in accordance with the regulation of UL-60950 and CAN/CSA C22.2 No. 601.1.

- Power Supply Announcement

The Handheld Rugged Tablet PC Power is supplied by Power Adapter and Battery Pack, the power rating announcement and manufacturer information are listed as below.




- Power Notice!



Please notice that the power code of adapter needs to be connected to the ground (earth).



Please push the power button for at least 4 seconds to enter sleep mode (See Chapter 2.1 Starting and Stopping the Tablet PC).

Power Adapter	Manufacture: EDAC Power Electronics Co Ltd Model: EA11001C-120 Input Rated: 100-240Vac, 1.8A, 50-60Hz. Output Rated: DC  12V, 6.66A.
Battery Pack	Manufacture: T-Gee Electronic Co., Ltd Model: ALG10X-08A Rated: 5300mAh DC 7.4V

WARNING

Do not fix or replace battery, it may cause explosion!
Only use with specified battery by following the manufacturer's user manual's instruction.



FEDERAL COMMUNICATIONS COMMISSION

This equipment has been tested and found to comply with the limits for a Class B digital device, pursuant to Part 15 of the FCC Rules. These limits are designed to provide reasonable protection against harmful interference in a residential installation. This equipment generates, uses and can radiate radio frequency energy and, if not installed and used in accordance with the instructions, may cause harmful interference to radio communications. However, there is no guarantee that interference will not occur in a particular installation. If this equipment does cause harmful interference to radio or television reception, which can be determined by turning the equipment off and on, the user is encouraged to try to correct the interference by one or more of the following measures:

- Reorient or relocate the receiving antenna.
- Increase the separation between the equipment and receiver.
- Connect the equipment into an outlet on a circuit different from that to which the receiver is connected.
- Consult the dealer or an experienced radio/TV technician for help.

CAUTION:

Any changes or modifications not expressly approved by the party responsible for compliance could void the user's authority to operate the equipment.

RF exposure warning

The equipment complies with FCC RF exposure limits set forth for an uncontrolled environment.

The antenna(s) used for this transmitter must not be co-located or operating in conjunction with any other antenna or transmitter.



RF exposure information (SAR)

This Rugged Tablet PC meets the government's requirements for exposure to radio waves. This Rugged Tablet PC is designed and manufactured not to exceed the emission limits for exposure to radio frequency (RF) energy set by the Federal Communications Commission of the U.S. Government. The exposure standard for wireless Rugged Tablet PC employs a unit of measurement known as the Specific Absorption Rate, or SAR. The SAR limit set by the FCC is **1.6** W/kg. Tests for SAR are conducted using standard operating positions accepted by the FCC with the Rugged Tablet PC transmitting at its highest certified power level in all tested frequency bands. Although the SAR is determined at the highest certified power level, the actual SAR level of the Rugged Tablet PC while operating can be well below the maximum value. This is because the Rugged Tablet PC is designed to operate at multiple power levels so as to use only the power required to reach the network. In general, the closer you are to a wireless base station antenna, the lower the power output. The highest SAR value for US model Rugged Tablet PC as reported to the FCC when tested for use at the body, as described in this user guide, is **1.115** W/kg.



Index

Chapter 1 Specification	5
1. System Specification	6
Chapter 2	7
Identifying Hardware Components	7
1. TOP Side	8
2. Left and Right Side	9
3. Bottom side	10
Chapter 3	11
Buttons and Indicators	11
1. Function Keys	12
2. LED Indicators	13
Chapter 4	14
Getting Your Device Ready	14
1. Plug in the AC Power	15
2. Using Battery Power	16
3. Installing 3G Module	18
4. How to use the Wireless Network	19
5. How to use the Bluetooth	21
6. How to use the 3G Feature	24
7. How to use the GPS Feature	25
8. How to use the Camera Feature	28
9. How to use the external antenna	30
10. How to adjust the LCD brightness	31
11. How to adjust the speaker volume	32
12. Show the battery information	33
13. Show the system information	33
Chapter 5	34
Installing the Device Driver	34
1. Chipset Driver Installation	35
2. Graphic Driver Installation	39
3. Audio Driver Installation	42
4. LAN Driver Installation	45
5. HotTab Utility Installation	47
6. HotTab Driver Installation	49



- 7. **Wireless LAN Driver Installation** 50
- 8. **Bluetooth Driver Installation.** 54
- 9. **3G Module Driver Installations** 57
- 10. **AirCard Watcher Installations** 59
- 11. **GPS Driver Installations** 61
- 12. **U-Center Installations** 65
- Chapter 6** **68**
- Caring Your Tablet PC** **68**
- 1. **Battery Protection Tips** 69
- 2. **Touch screen Protection Tips** 70
- 3. **Trouble shooting from A to L** 71
- 4. **Appendix** 77



Chapter 1

Specification



ALGIZ 10X is a rugged Tablet PC designed for the use in various challenging environments, e.g., field work, outdoor activities and construction site. With its rugged design, ALGIZ 10X is able to sustain shock, vibration, high humidity as well as high/ low temperatures.

1. System Specification

System	
Processor	Intel® Atom™ Processor N2800
BIOS	AMI System BIOS
Chipset	Intel® NM10 Express Chipset
Memory	1 x SODIMM, DDR3 1600 4GB
LAN Controller	Broadcom BCM57780 Gigabit-LAN
Storage	SATA interface support Mini-PCIe interface SSD 128GB
Audio	Audio-out for headset, Audio-in to send in audio signal, Microphone-in for microphone jack, 1.5W Speaker (Internal)

Display Specification	
Size	10.1" (16:9)
Resolution	1366 x 768
Brightness	600 cd/m2 (typ.)
Touch	4W Resistive Touch

I/O Connectors	
Left I/O Port	1x DC Power Jack, 1xVGA, 1xUSB, 1xRS232
Right I/O Port	1x LAN, 1x USB, 1xCombo, Audio Jack, 1x SIM Card Slot, 1xMirco SD Card Slot
Bottom I/O Port	1x Pogo-pin for Docking, 1x Service Window

Buttons and Indicators	
Control Button	1x Power On/Off, 1x Menu, 1x Up, 1x Down, 1x Left, 1x Right 3x Programmable Hotkeys
LED indicators	1x Power Status, 1x HDD Status, 1x RF Device Status, 1x Battery Status, 1x GPS Status

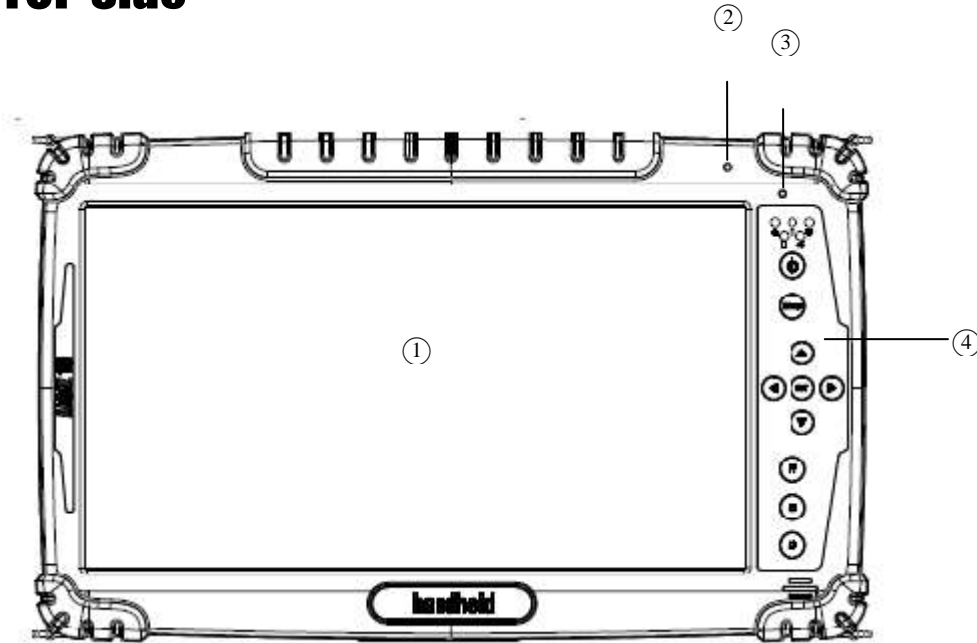


Chapter 2

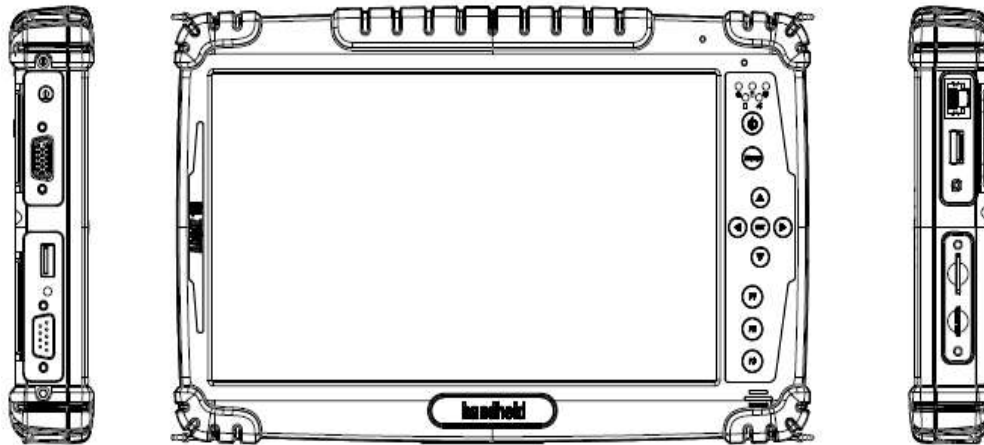
Identifying Hardware Components



1. TOP Side



Ref.	Item	Description
1	LED Display	The Tablet PC uses a high brightness LED TFT LCD. Use a soft cloth without chemical liquids to clean the display panel.
2	Front Microphone	Receives sound and voice to record voice.
3	Light Sensor	Senses the ambient light for automatic adjustments of the display backlight. The features can be enabled through OSD Control Keypad.
4	OSD Control Keypad	The OSD Control Keypad provides hotkeys with all the functions including 1x Power On/Off, 1x Menu, 1x Up, 1x Down, 1x Left, 1x Right, 3x Programmable Hotkeys.



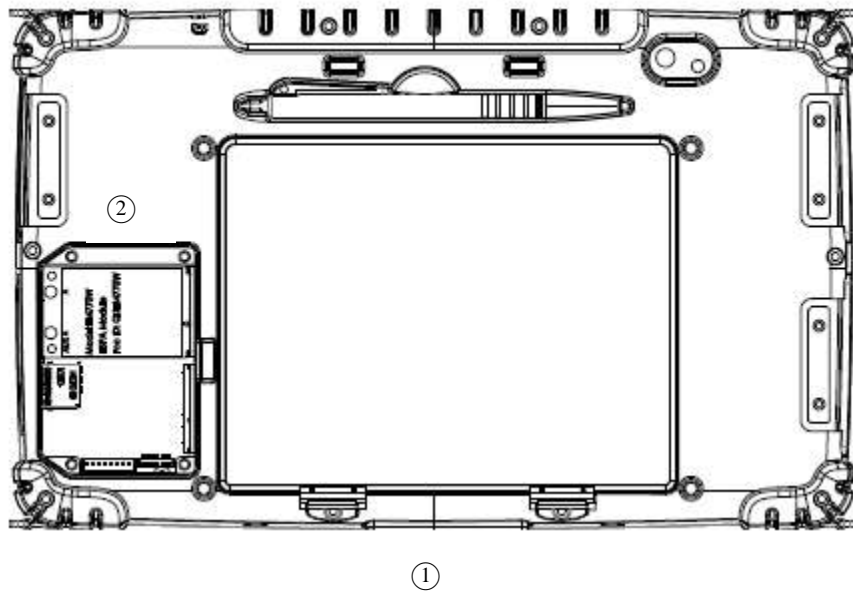
2. Left and Right Side

- ① —————
- ② —————
- ③ —————
- ④ —————
- ⑤
- ⑥
- ⑦
- ⑧
- ⑨

Ref.	Item	Description
1	DC Power Jack	Plug in DC plug to input the power to the device
2	VGA	For connection with external displays devices such as monitors and projectors
3	USB 2.0 Port x 1	Can be connected with any USB-interface peripherals
4	RS232	Accepts external connection that is with interface of RS232 (D-sub 9 pins)
5	Ethernet(RJ45) Port	Connect to a Ethernet 10/100/1000 based network
6	USB 2.0 Port x 1	Can be connected with any USB-interface peripherals
7	Combo Audio Jack	Connects a set of headphones or external speakers.
8	SIM Card Slot	Accepts a SIM Card use the WWAN feature to connect to the Internet.
9	Micro SD Card Slot	Accepts a Micro SD Card for additional feature.



3. Bottom side



Ref.	Item	Description
1	Docking Connector	Connects to the Docking Station .
2	Service Window	Unscrew to install and uninstall 3G/ module and SIM card



Chapter 3

Buttons and

Indicators



1. Function Keys

	Components	Function Description	See Other Intro.
1	Power On Button	PUSH 4 seconds to turn on the tablet pc	
2	LED Indicator	Shows the Power Status, HDD Status, RF Device Status, Battery Status, and GPS Status	
3	Menu	Push Menu function to show Brightness(Include Auto Light Sensor), Volume,Battery status and Wireless/Bluetooth/3G/GPS/Camera Enable/Disable &Internal/External 3G&GPS Antenna switch.	
4	F1 – F3 Hotkey	6 programmable Hot-key for user to define by application, default first short push key (F1 short) will turn-on Outlook Express	
5	Up/Down/ Left/ Right/OK Button	Cotrol the up, down, left, right and Enter function.	



2. LED Indicators



Function	Icon	Description
Power Status		Green light – Power on Orange light – Sleep mode
HDD Status		Green light – System is accessing the hard disk drive
RF Status		Green light – When RF radio is on.
Battery Status		Red light – Low Battery Green light – Full Battery Yellow light – Charging
GPS Status		Indicates if the GPS is workable.



Chapter 4

Getting Your Device

Ready

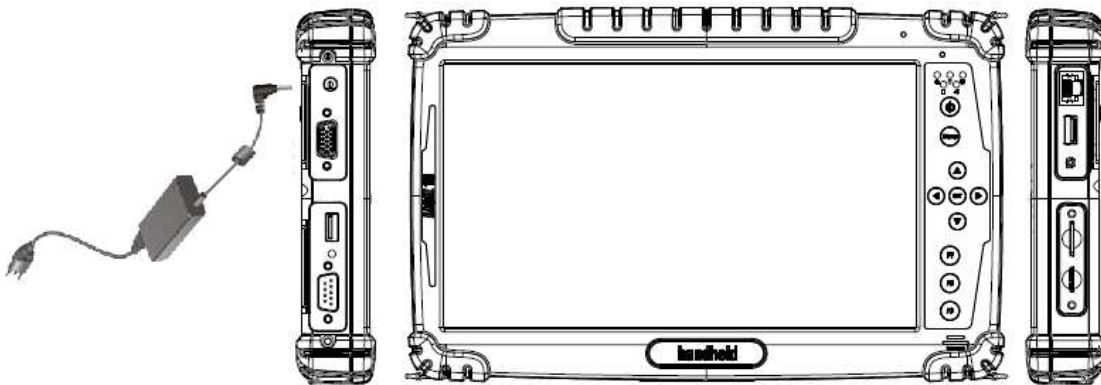


Make sure that your device is either connected to AC power or a battery that still has power.

1. Press the power button to turn on your ALGIZ 10X.

1. Plug in the AC Power

The Tablet PC power is comprised of two parts, the power adapter and the battery. The power adapter converts AC power from a wall outlet to the DC power required by the Tablet PC. Your Tablet PC comes with a universal AC-DC adapter. That means that you may connect the power cord to any 100V-120V as well as 220V-240V outlets without setting switches or using power converters. Different countries may require that an adapter be used to connect the provided US-standard AC power cord to a different standard.



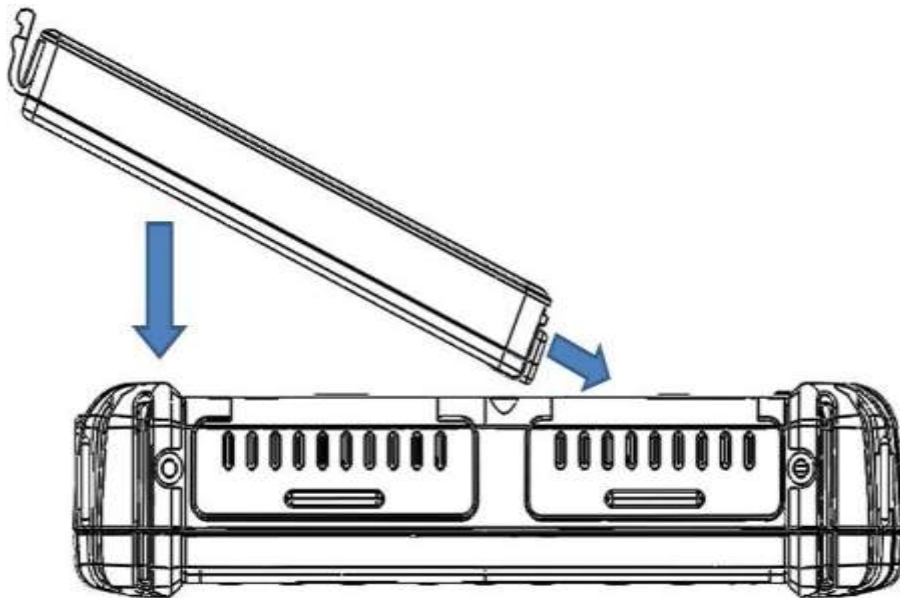


2. Using Battery Power

The Tablet PC is designed to work with a removable battery pack. The battery pack consists of a set of battery cells housed together. A fully charged pack will provide several hours of battery life.

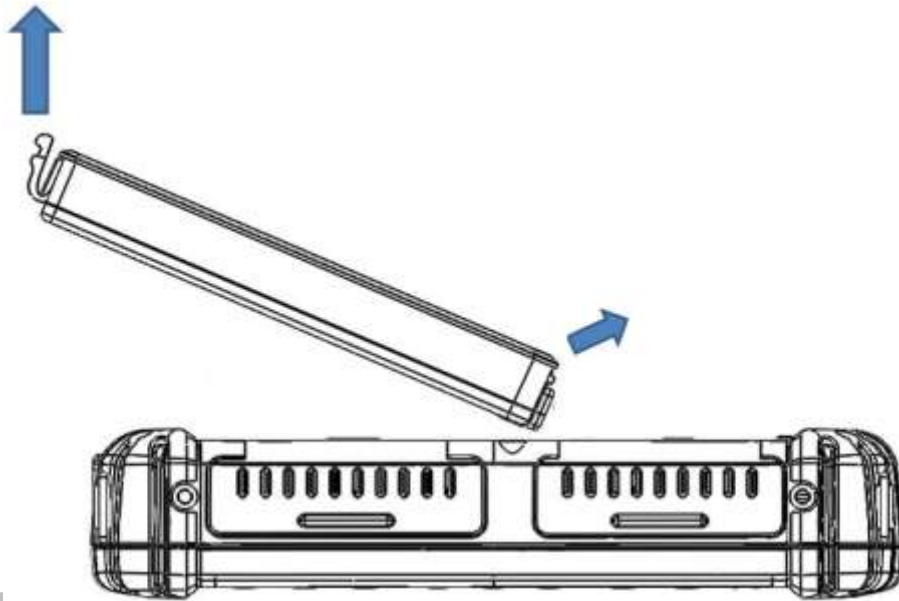
To install the battery pack:

1. Your Tablet PC may or may not have its battery pack installed. If your Tablet PC does not have its battery pack installed, use the following procedures to install the battery pack. Push the latches aside to install / remove the battery .





2. To remove the battery pack



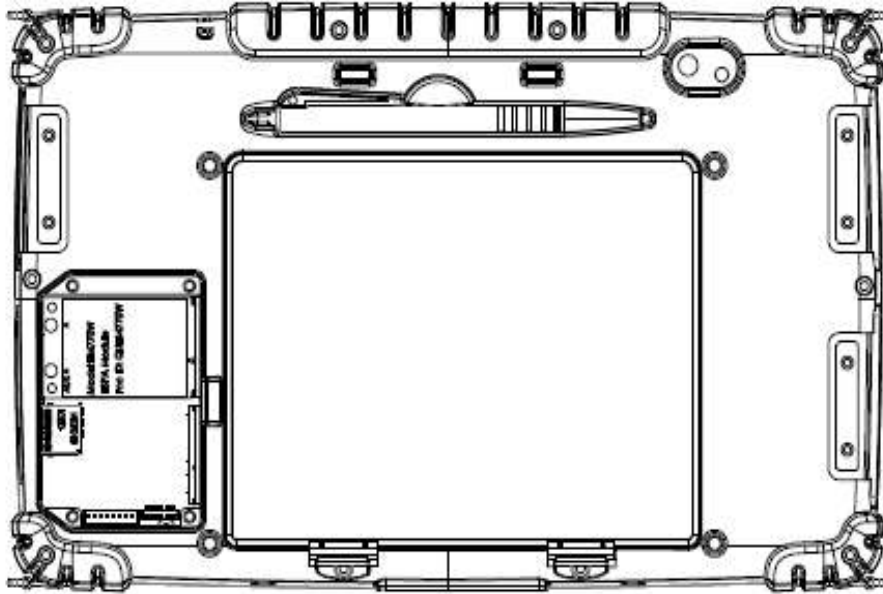
Caution

Before you use your ALGIZ 10X, you will have to charge the battery packs as soon as ALGIZ 10X is connected with the external power source. Please fully charge the battery in advance of operating ALGIZ 10X. The new battery packs must be 100% charged before ALGIZ 10X is disconnected from the external power source. It takes few hours to fully charge the battery when ALGIZ 10X is turned off.



3. Installing 3G Module.

1. Plug in the 3G module to mini PCIe slot and screw the module onto the motherboard
2. Please insert the SIM card before start to use the WWAN Internet Connection.





4. How to use the Wireless Network

We apply IEEE 802.11 b/g/n WiFi + Bluetooth 4.0 HS Standard (Class I) Half mini card for default function of the ALGIZ 10X.

The WLAN features include:

- Support Peer-to-Peer (Ad-Hoc) and Access Point (Infrastructure) modes.
- Enhanced wireless security:64/128-bits WEP, WPA, WPA2.
- Wireless connection up to 150Mbps

1. Press the Menu button on your Tablet PC to open the Hottab menu. Click the “Wi-Fi” to switch the wireless radio on/off.

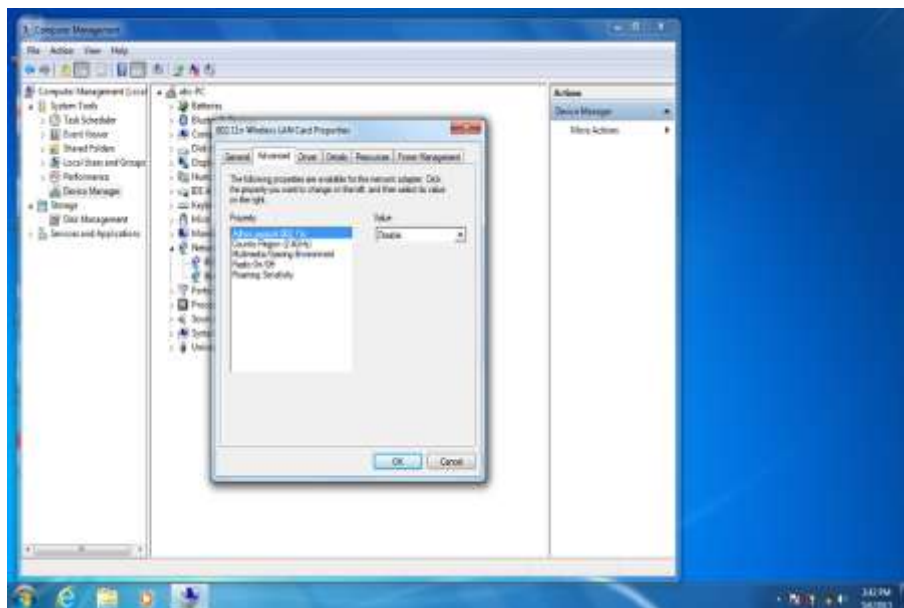




- 2. Click the Wireless Network icon on the taskbar. (An orange light in the icon indicates connections are available.)



- 3. You can also do some detail setting from the device manager.





5. How to use the Bluetooth

Depending on your application, the Bluetooth module can give you capability for short-range wireless communications between devices without requiring a cable connection. The transmission can go through walls, pockets and briefcases as long as two devices are within range around 10 meters. Following the easy step to connect to the Bluetooth communication.

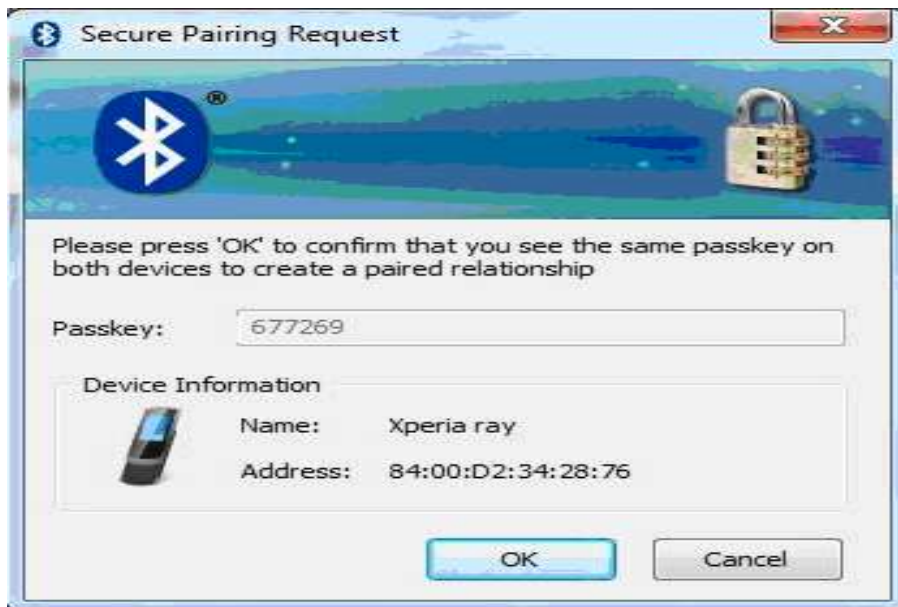
1. Press the Menu button on your Tablet PC to open the Hottab menu. Click the "Bluetooth" to switch the BT radio on/off.



2. After installing the driver utility, the Bluetooth shortcut will shown on screen, double click the shortcut and it will search any bluetooth device automatically. Or double click "Search Devices" to search again.



3. Choose the bluetooth device you want to connect, and left click to choose "Connect". Then the device will be connected to the module.





4. When under connecting, you can choose "Send" to send a data to the pair device. connection.





6. How to use the 3G Feature

✘ Please insert SIM card before power on.

The ALGIZ 10X can apply a built-in Mini PCIe 3G module to perform the 3G function. Depending on your application, the 3G module can datacard and host PC software combination deliver multiband HSPA/UMTS , EDGE/GPRS , WCDMA/GSM connectivity in a single hardware configuration.

1. Press the Menu button on your Tablet PC to open the Hottab menu. Click the "3G" to switch the 3G radio on/off.



2. On Windows desktop, double-click the AirCard Watcher shortcut. The screen as below appears. (If the 3G device is not exist, the AirCard Watcher will not pop up automatically.)





7. How to use the GPS Feature

We apply an on board GPS module for default function of the ALGIZ 10X.

1. Press the Menu button on your Tablet PC to open the Hottab menu. Click the "GPS" to switch the GPS radio on/off.

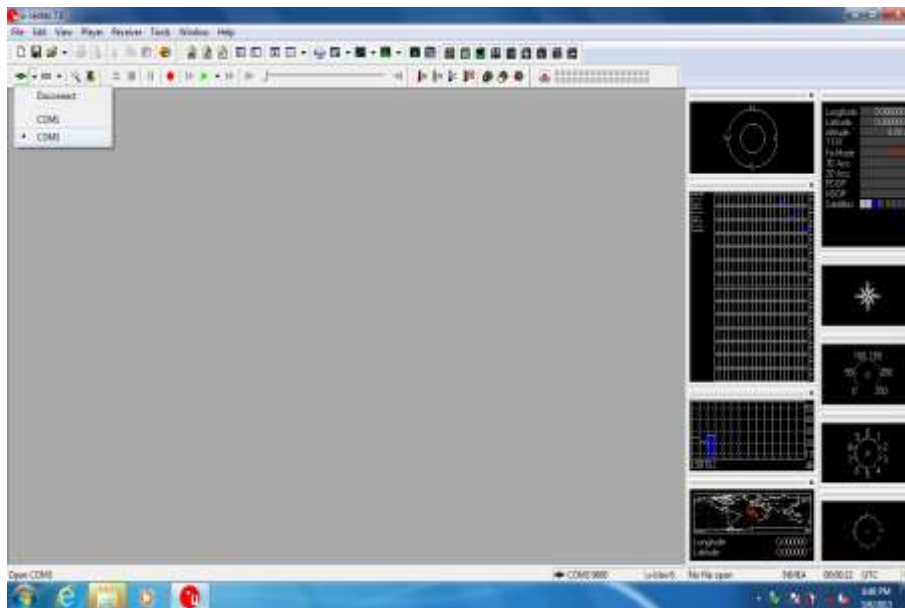


2. Click the u-center icon to start the GPS function settings.

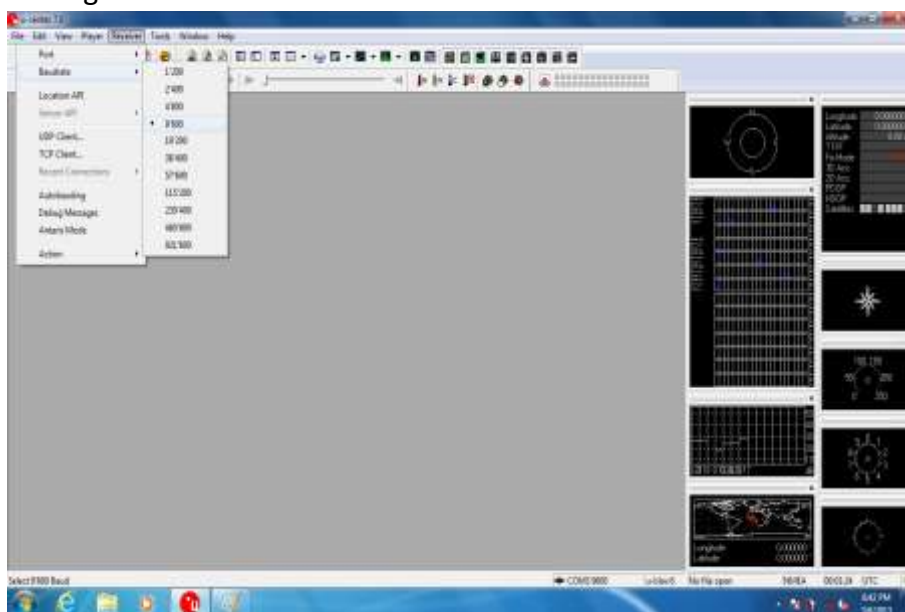




3. Setting the Receiver Port to COM3

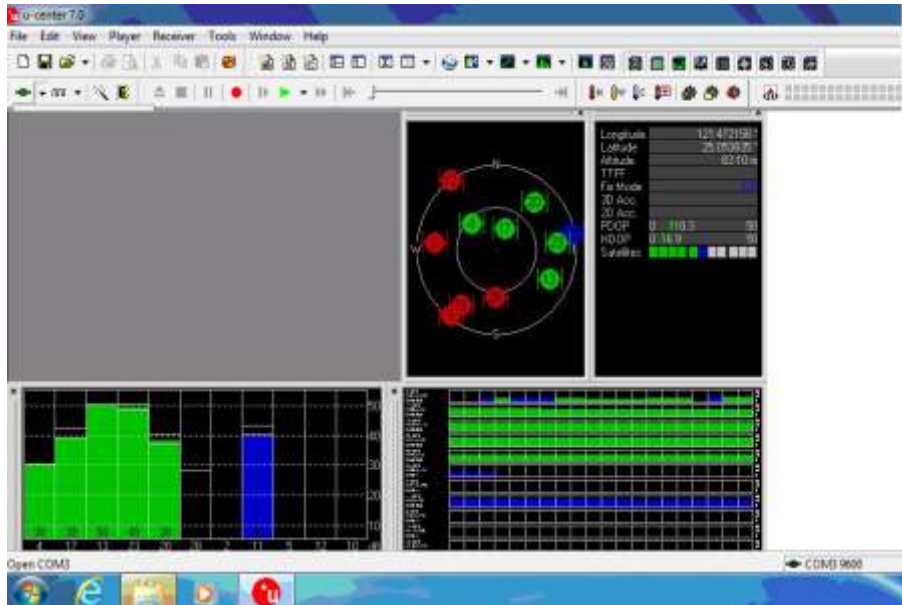


4. Setting the Receiver Baudrate to 9600

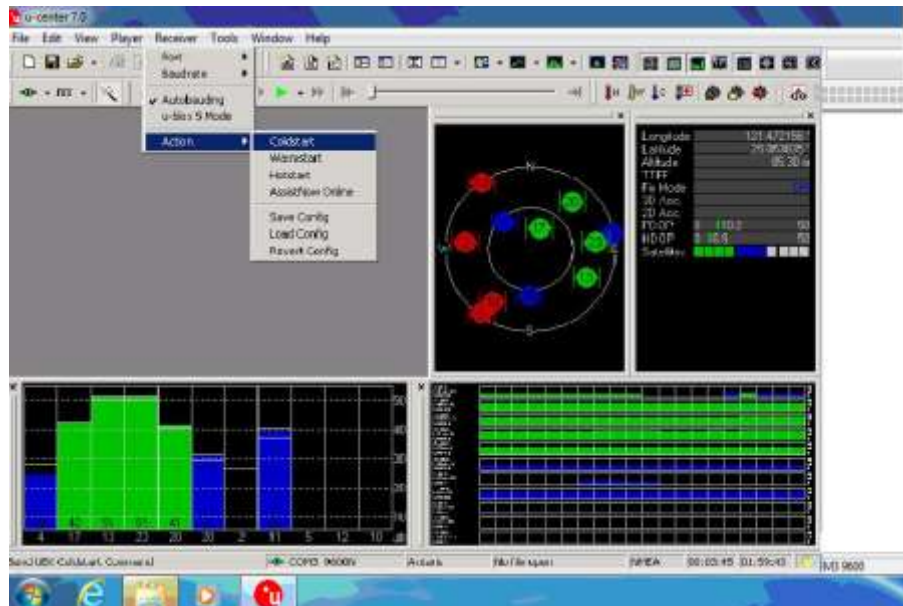




5. GPS Module will start Cold Start. When the positioning is complete, the Fix Mode will appear as DR



6. You can choose coldstart, warmstart or Hotstart from Receiver Action





8. How to use the Camera Feature

The ALGIZ 10X applies a internal 5M Pixels Camera with microphone module for default function .

1. Press the Menu button on your Tablet PC to open the Hottab menu. Click the "Camera" to switch the Camera power on/off.



2. Start the Camera program. You will be in Camera mode.

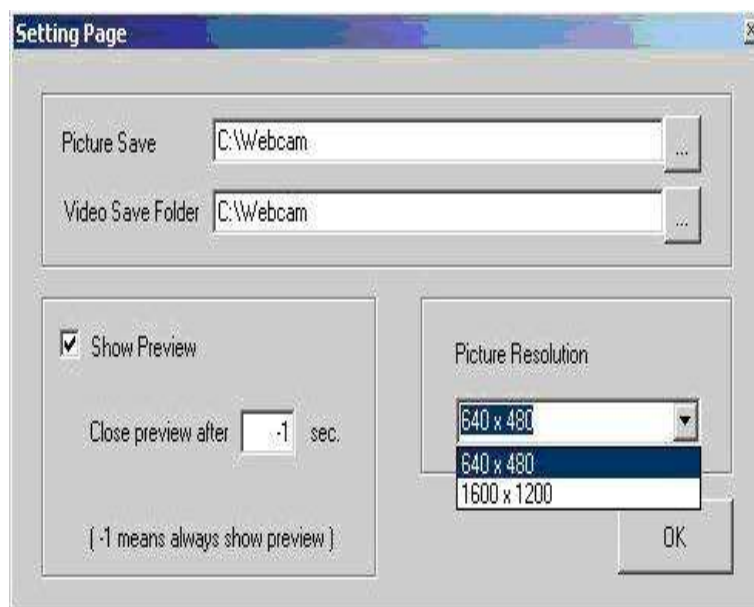




3. Setting the image pre-view resolution.



4. When you set the pre-view resolution to 640*480,the final picture resolution is also 640*480..





9. How to use the external antenna.

1. Press the Menu button on your Tablet PC to open the Hottab menu. Click the “3G Antenna(Auto)”and “GPS Antenna(Auto) to switch the internal and external 3G/GPS Antenna.



2. If you choose these two items and plug the tablet pc to the Vehicle Docking. It will automatically switch to use the external antenna on the Vehicle Docking.



10. How to adjust the LCD brightness

1. Press the Menu button on your Tablet PC to open the Hottab menu.
2. Allows you to use the left and right arrow keys to adjust the LCD brightness.



3. The "Auto Brightness" choice box allows you configure how the light sensor works.



11. How to adjust the speaker volume.

1. Press the Menu button twice on your Tablet PC to open the Hottab menu.
2. Allows you to use the left and right arrow keys to adjust the speaker volume. ■



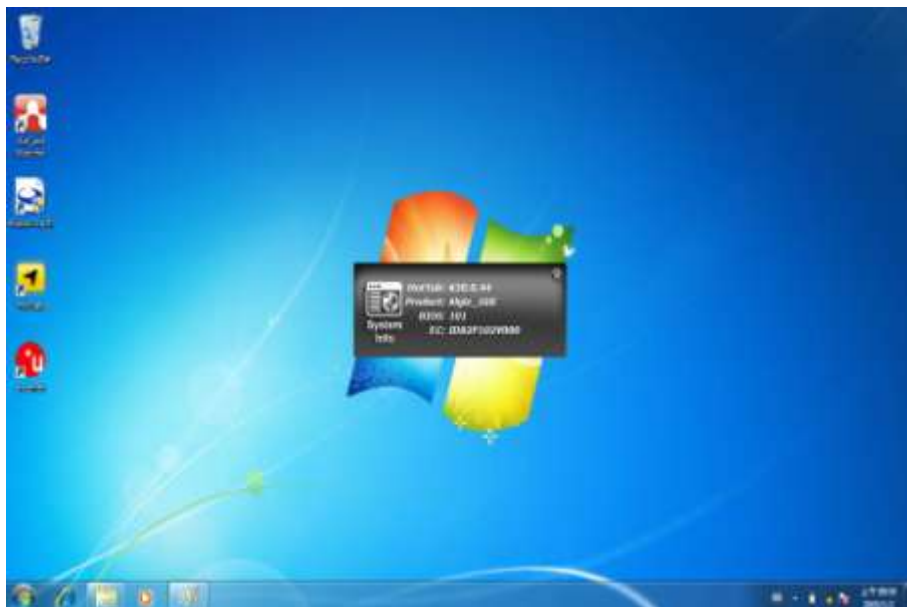


12. Show the battery information..



1. Press the Menu button third times on your Tablet PC to open the Hottab menu.

13. Show the system information..



- 1.



Chapter 5

Installing the Device Driver

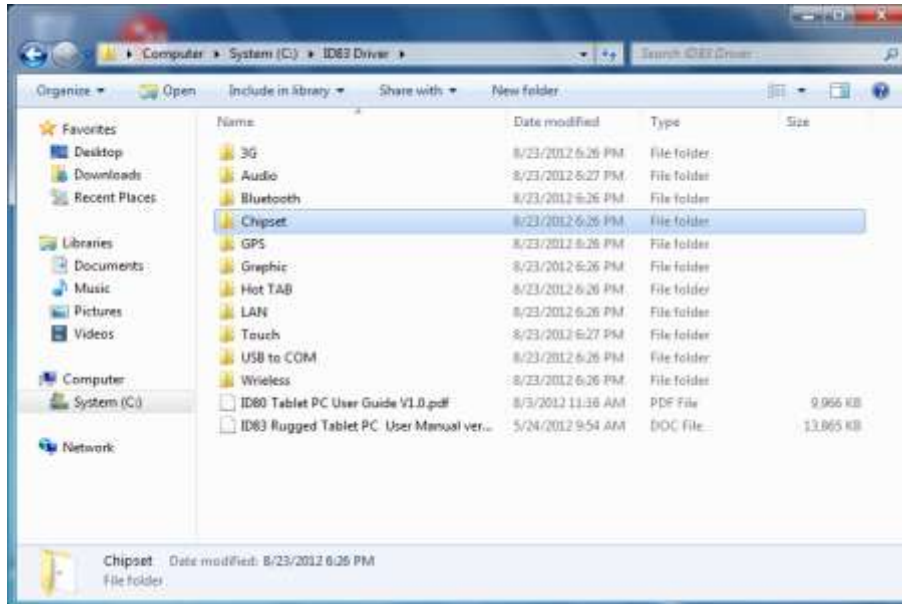
Through Chapter 5 to go further for ALGIZ 10X driver installation guide, you can easily install all related drivers if without operation system by yourself. The default system will include operation system and you do need to install any of



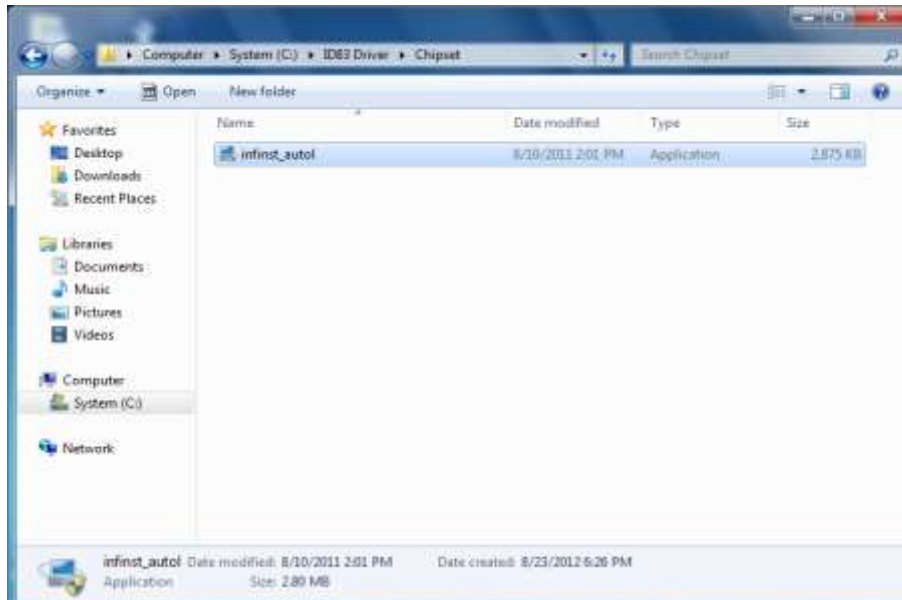
drivers at first time use.

1. Chipset Driver Installation

1. Open the file document "Chipset" from C:\drivers folder.



2. Click on "infinst_auto" to install driver.





3. Click on "Next" to install driver.



4. Click on "Yes " to agree License





5. Click on "Next" to install driver.





6. Click on "Yes, I want to restart this computer now" to go on.

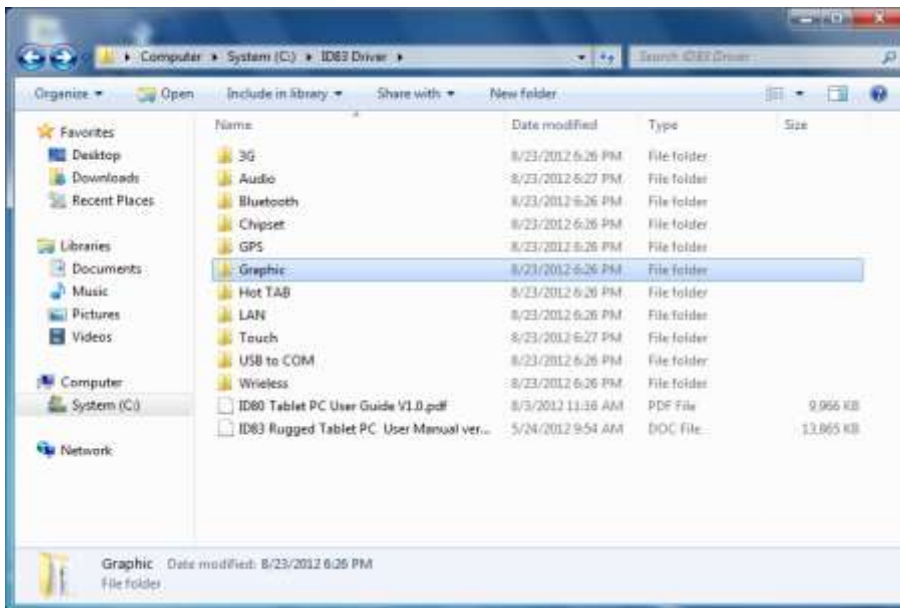




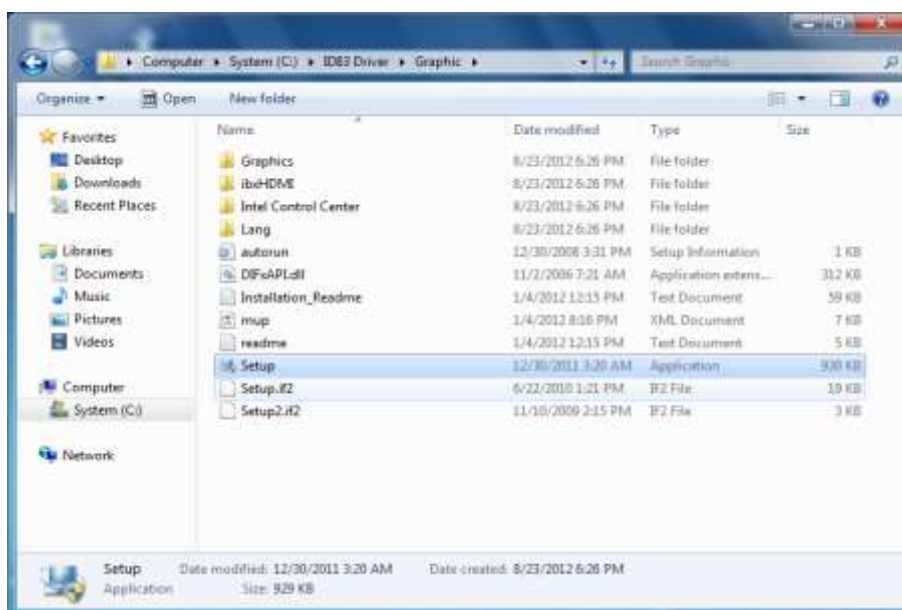
2. Graphic Driver Installation

The system is equipped with Intel NM10 Chipset. The Intel Graphic Drivers should be installed first, and it will enable “Video Controller (VGA compatible). Follow the instructions below to complete the installation. You will quickly complete the installation.

1. Open the file document “Graphic “from C:\drivers folder.



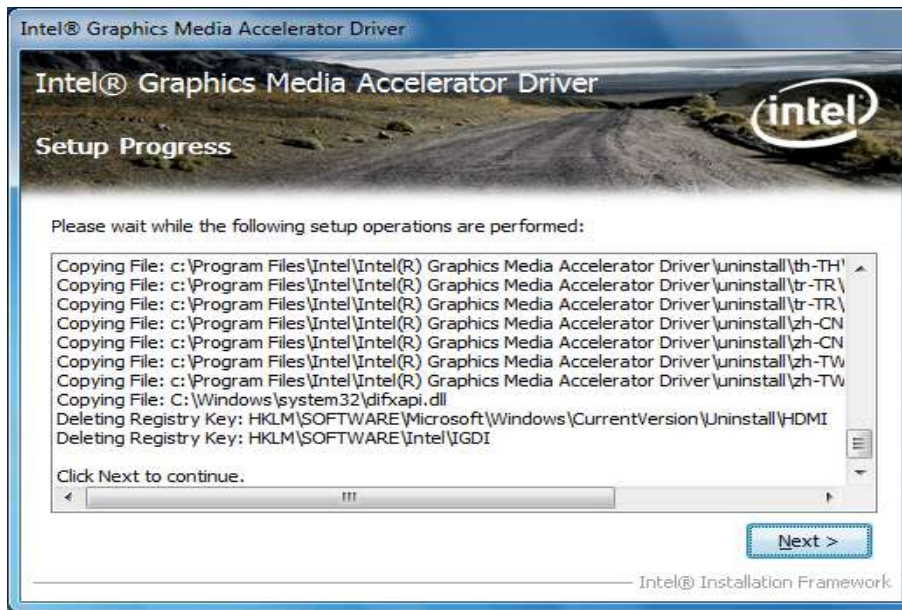
2. Click on “Setup.exe” to execute the setup.



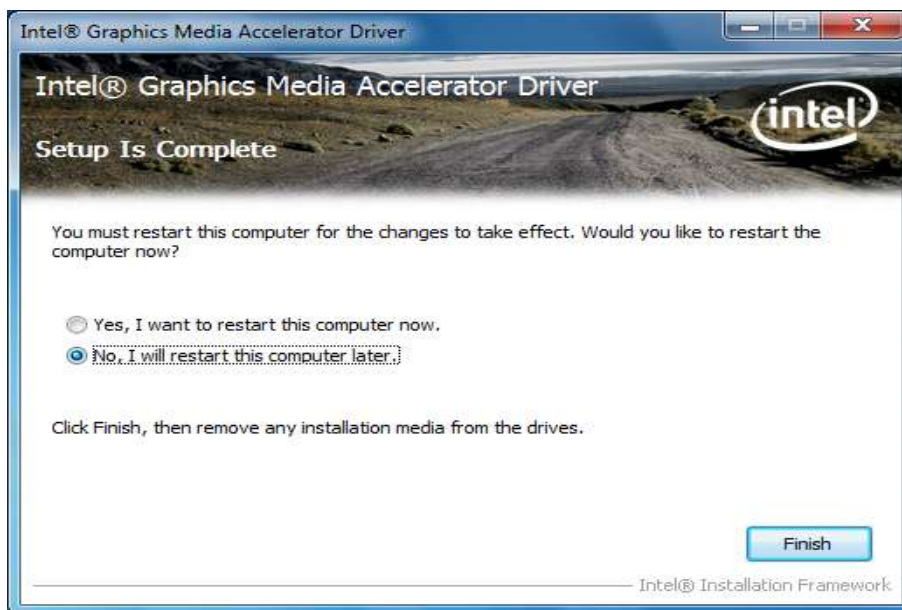


3. Click on "Next" to install Driver.





4. Click on “Yes, I want to restart this computer now” to go on.

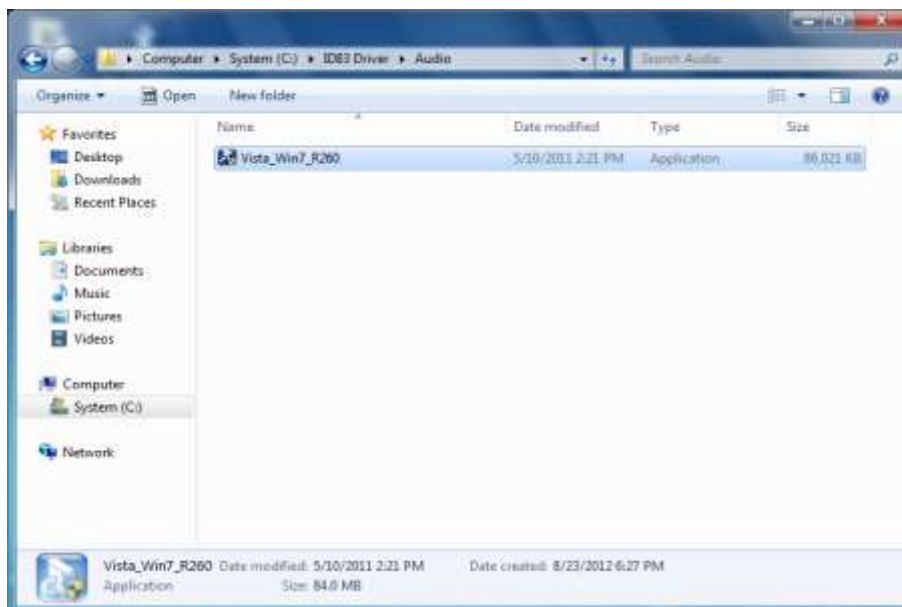
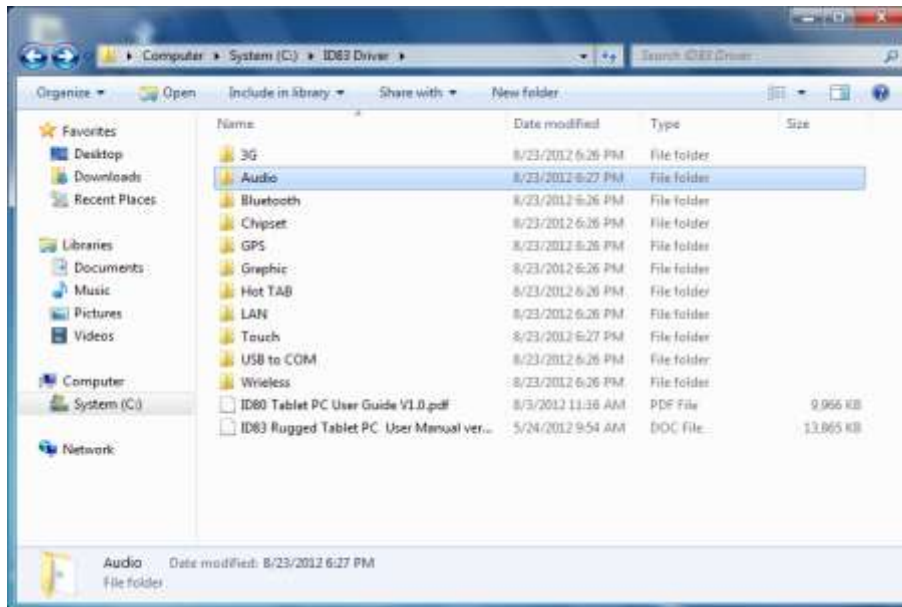




3. Audio Driver Installation

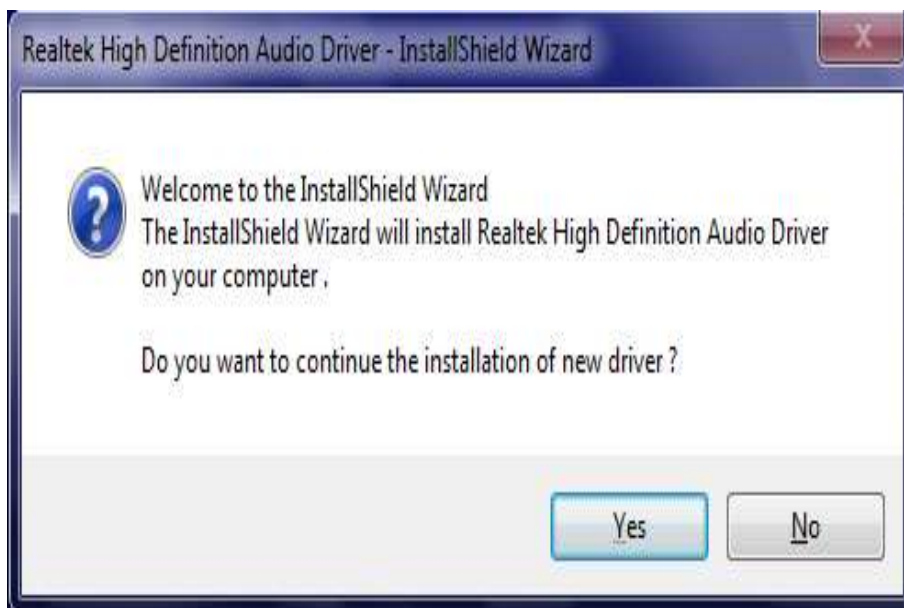
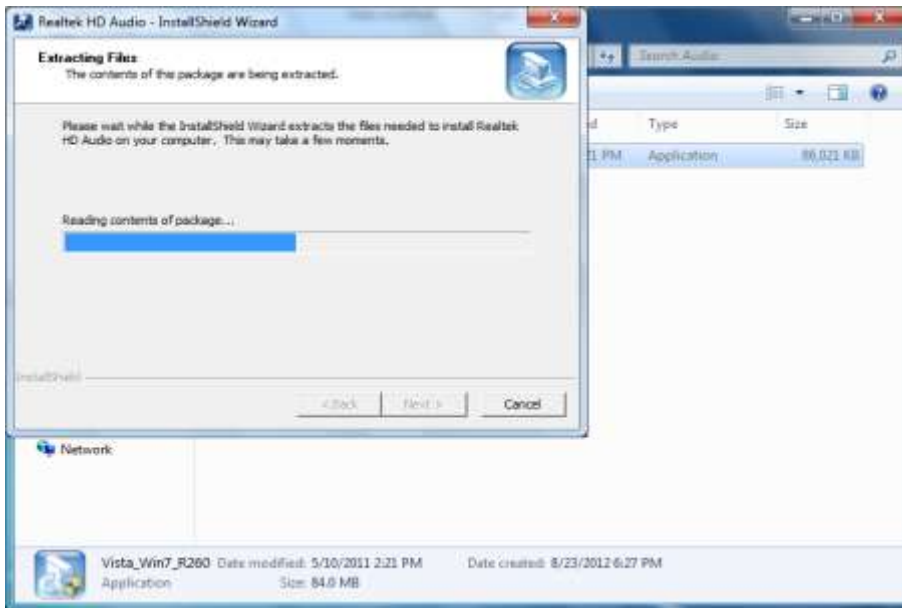
The system is equipped with the Realtek ALC886 HD Audio Codec designed for PC multimedia systems, including host/software audio and AMR/CNR-based designs.

1. Open the file document "Audio" and click on "Vista_Win7_R260.exe" from C:\drivers folder to execute the setup.



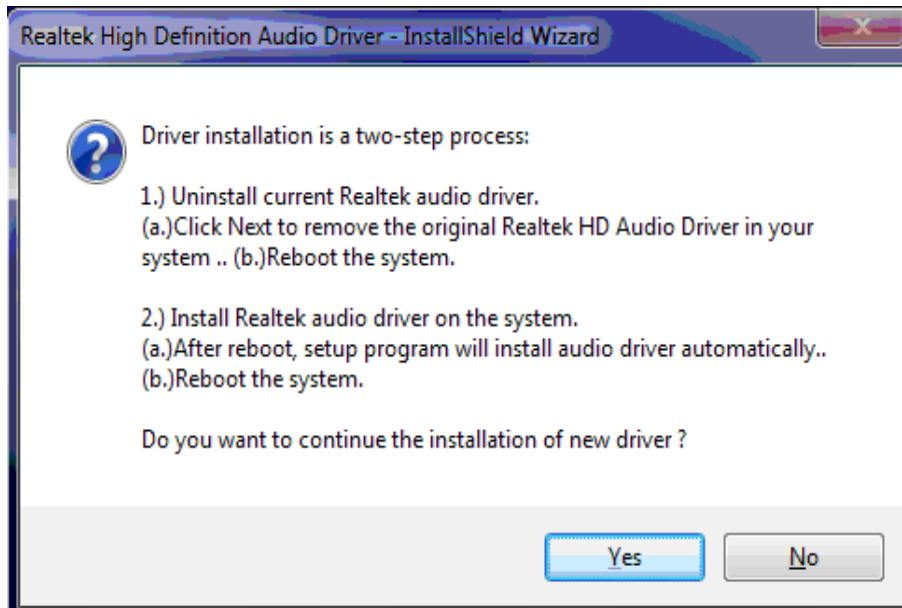


2. Click on "Next" to install driver.





- 3. Click on “Yes, to continue the installation and then click on” Yes, I want to restart my computer now” to finish installation.

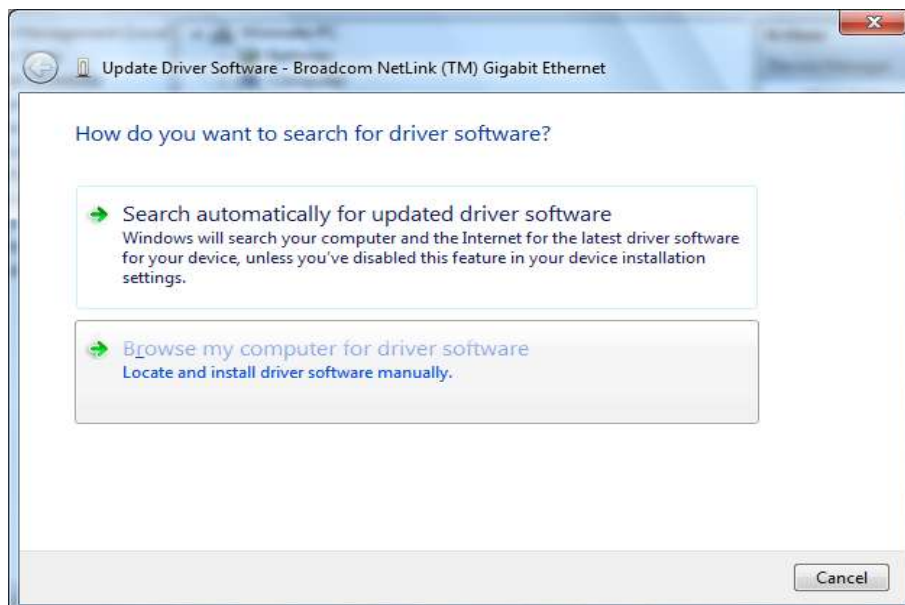
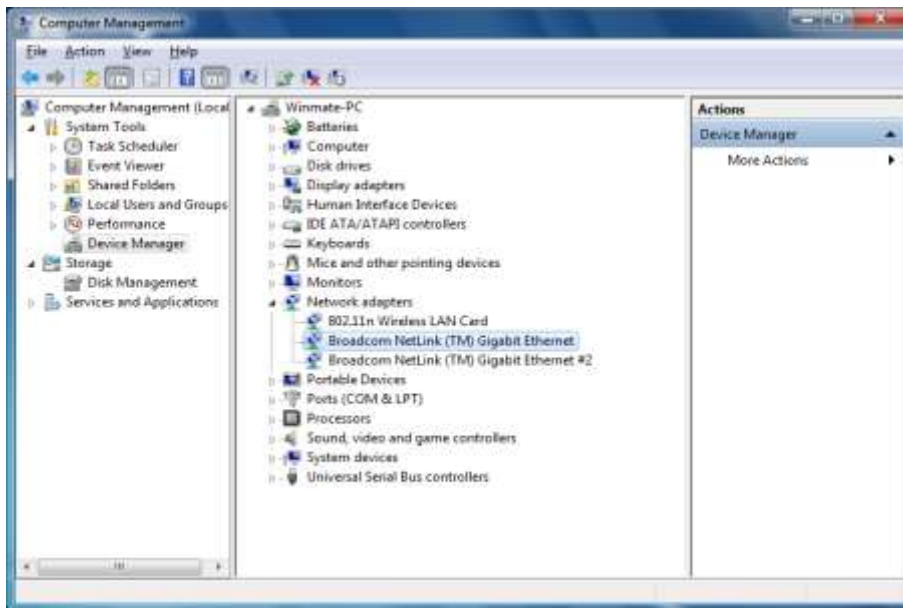




4. LAN Driver Installation

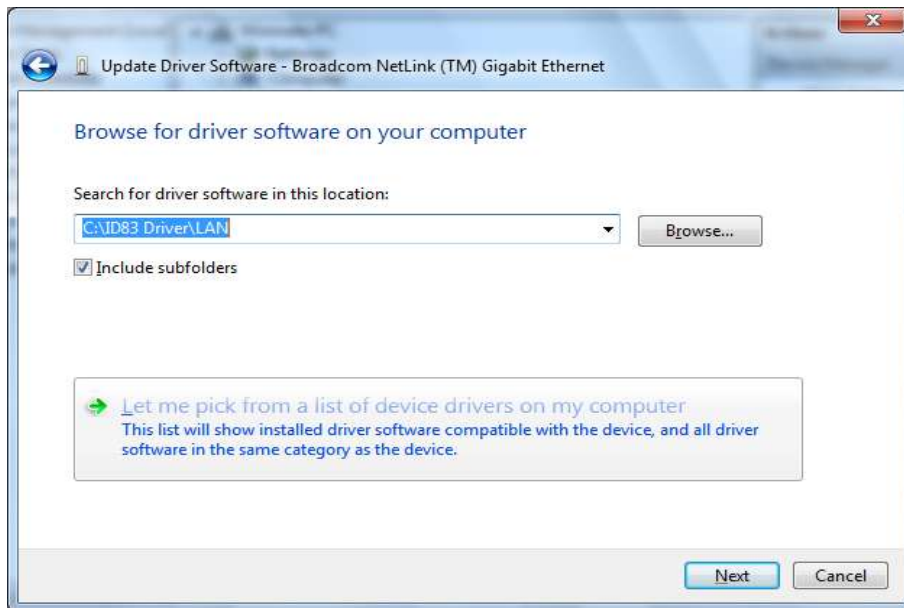
Follow the steps below to complete the installation of the LAN drivers. You will quickly complete the installation.

1. In the Device Manager menu, select LAN device, and right click select update driver

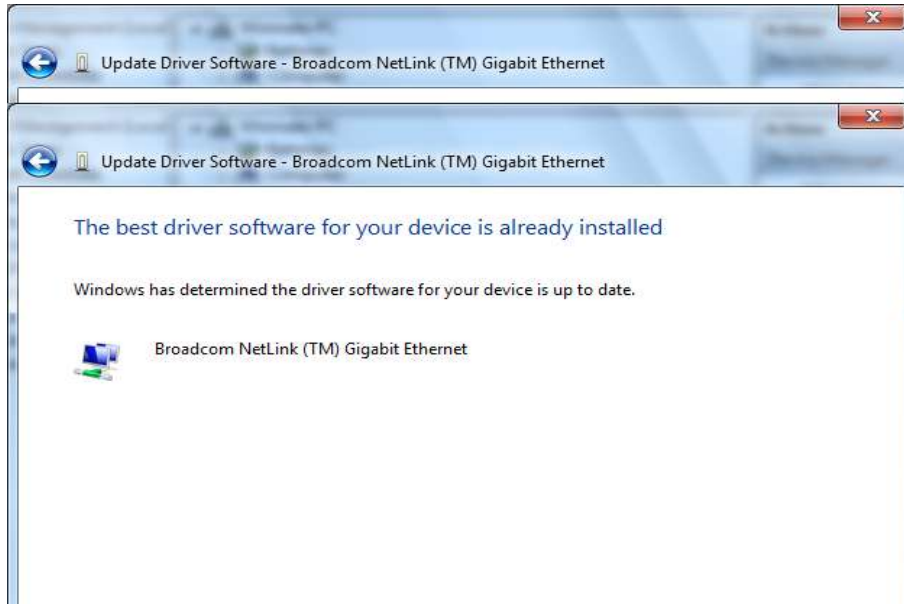




- 2. Open the file document "LAN".



- 3. Select the correct file in the document and click on open to execute the setup.

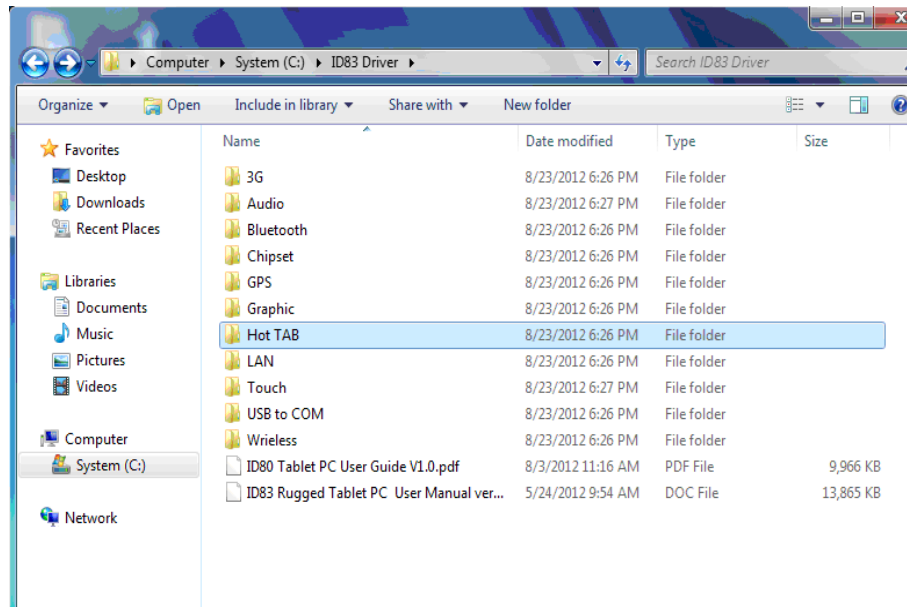




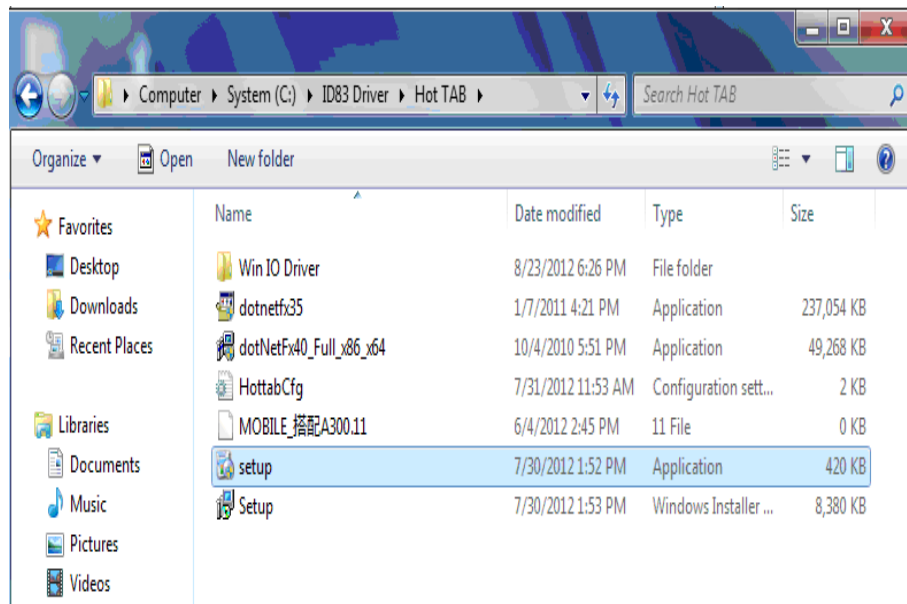
5. HotTab Utility Installation

With our HotTab software application utility, user can very easy to control and program their usual hotkey for help their job.

1. Open the file document “Hot TAB” from C:\drivers folder.
Press the Setup.exe to execute the installation program.

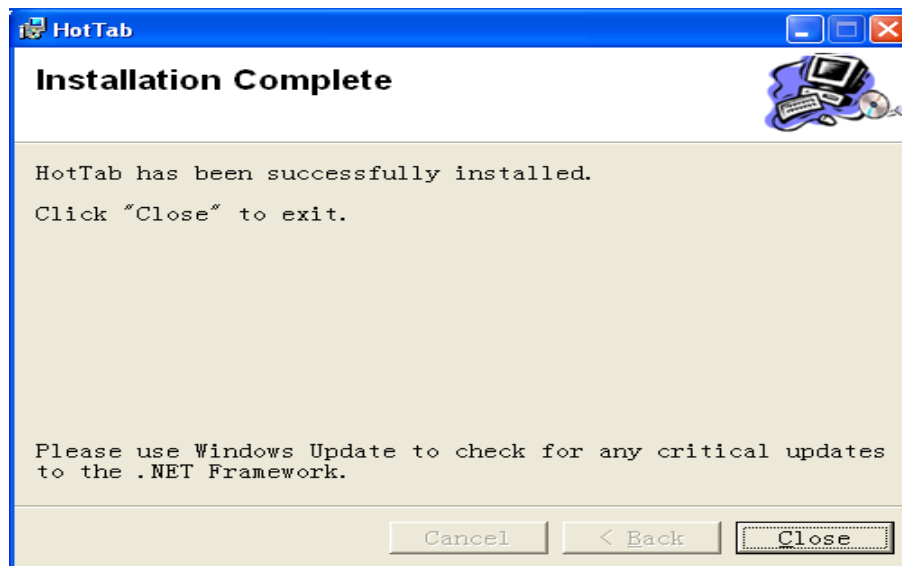


2. Click on “Setup.exe” to start to the installation.





3. Click "Close" to finish the installation.

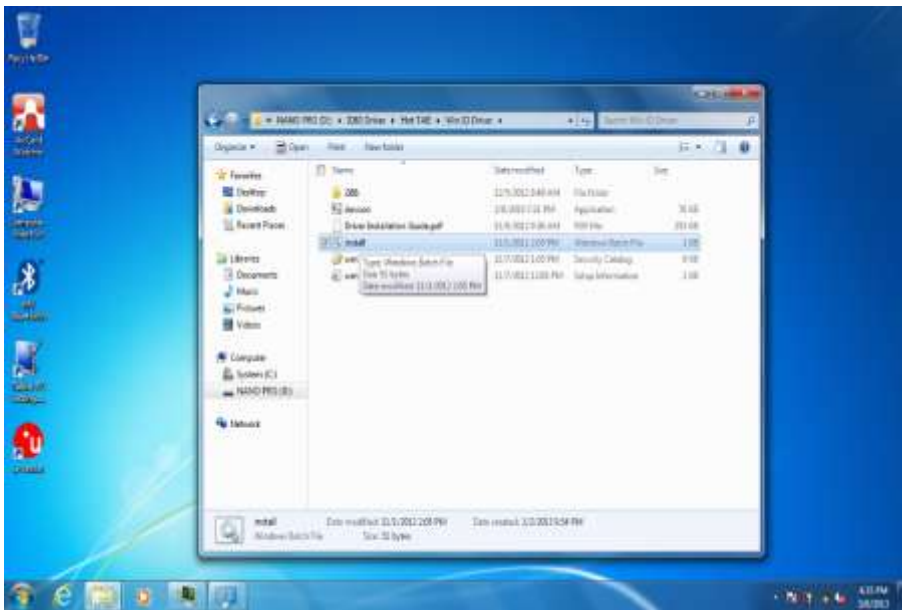




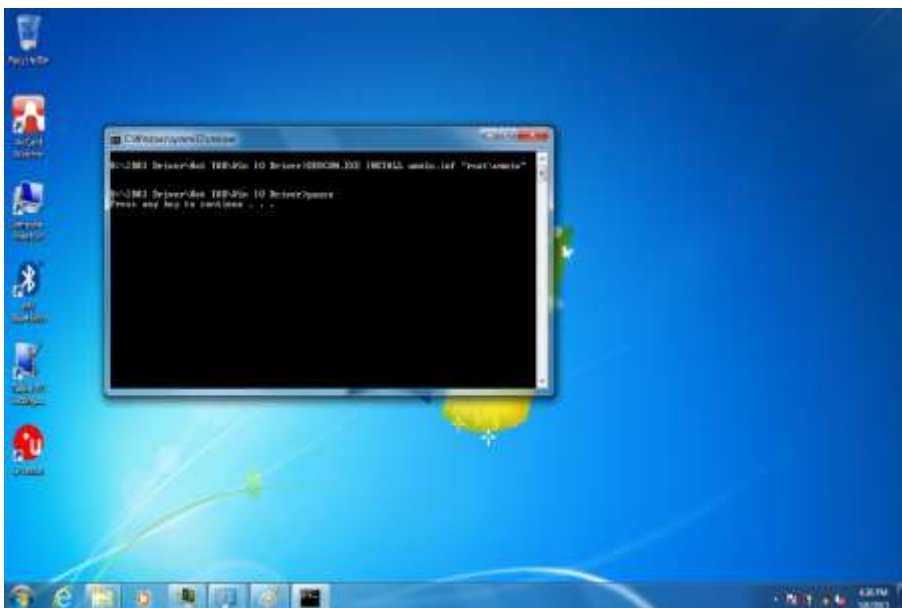
6. HotTab Driver Installation

Following the step by step to finish the driver installation

1. Open the file document Win IO Driver” from C:\drivers folder. Press the Install.bat to execute the installation program.



2. Press any key to complete the driver installation.

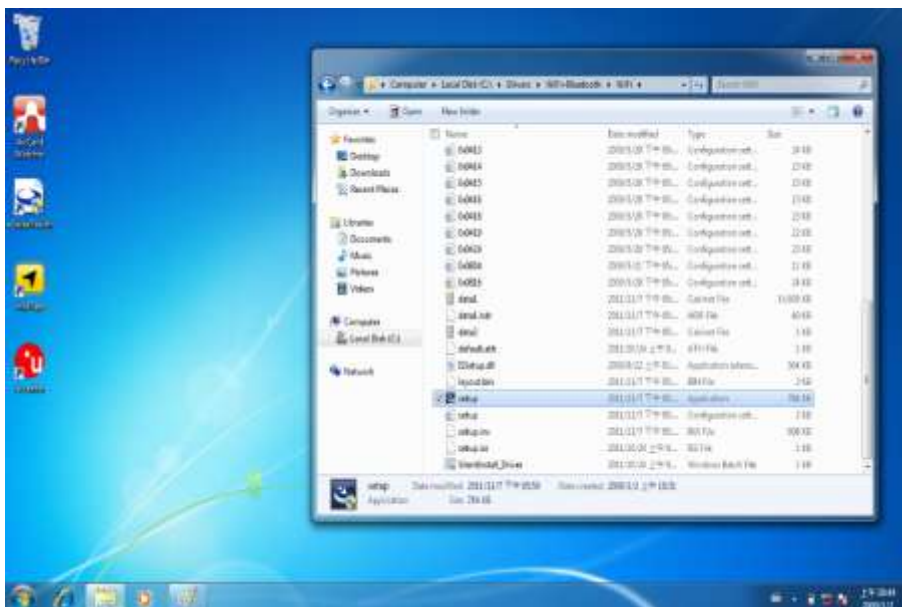
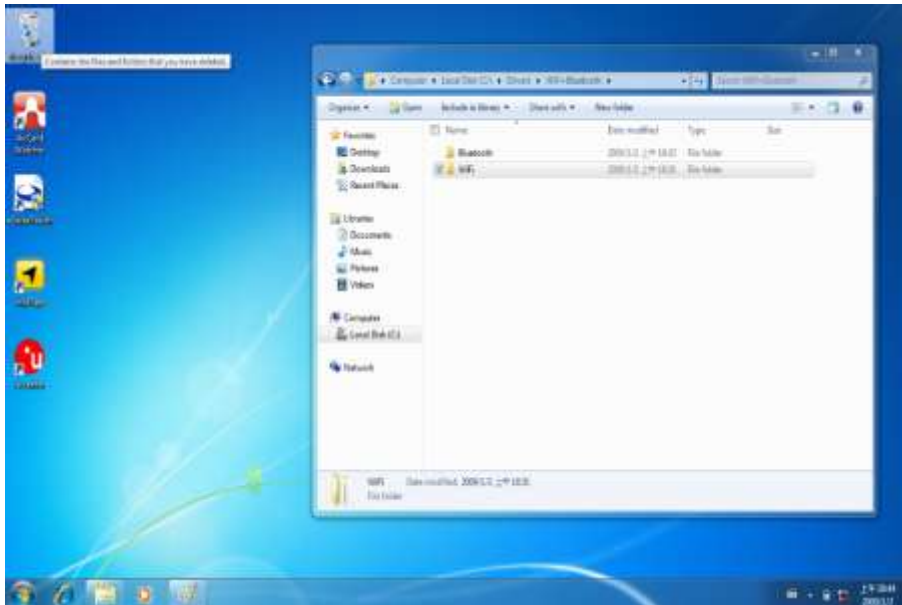




7. Wireless LAN Driver Installation

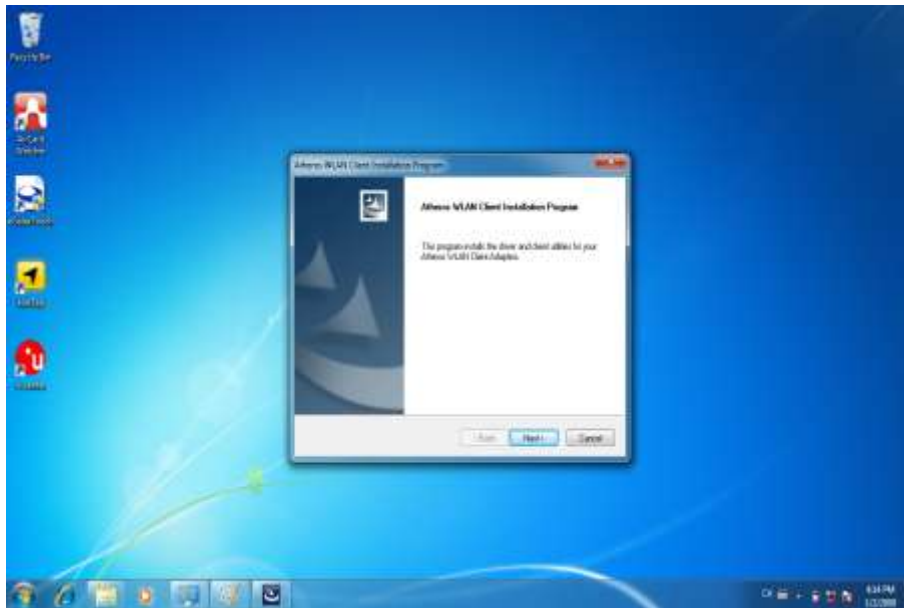
Following the step by step to finish the driver installation

1. Open the file document “Wireless” from C:\drivers folder to execute the installation program.

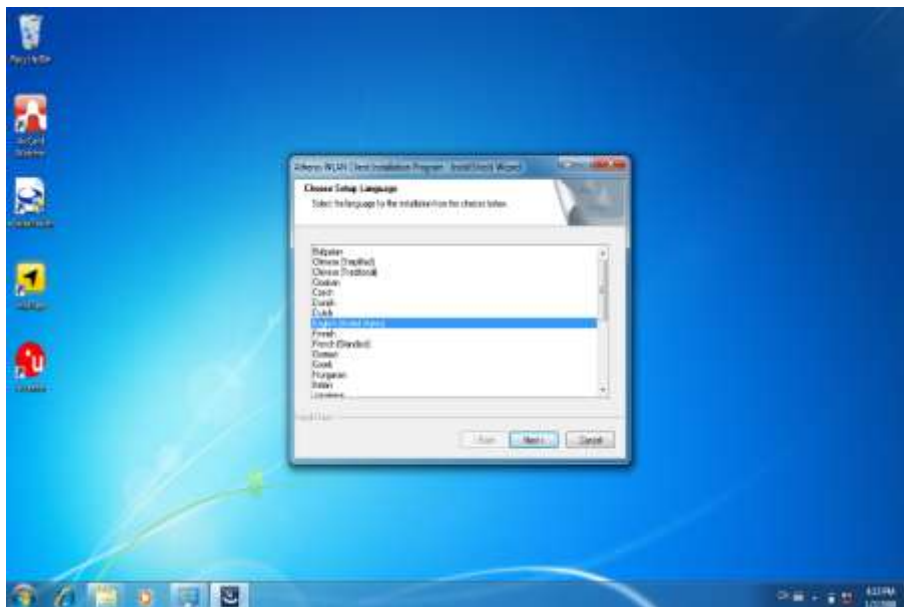




2. Click "Next" to start the driver installation.

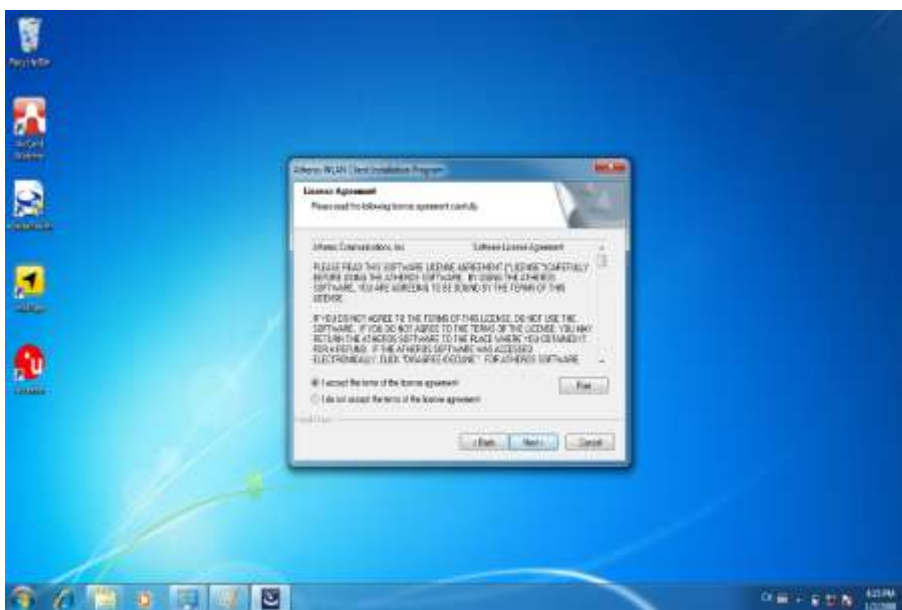
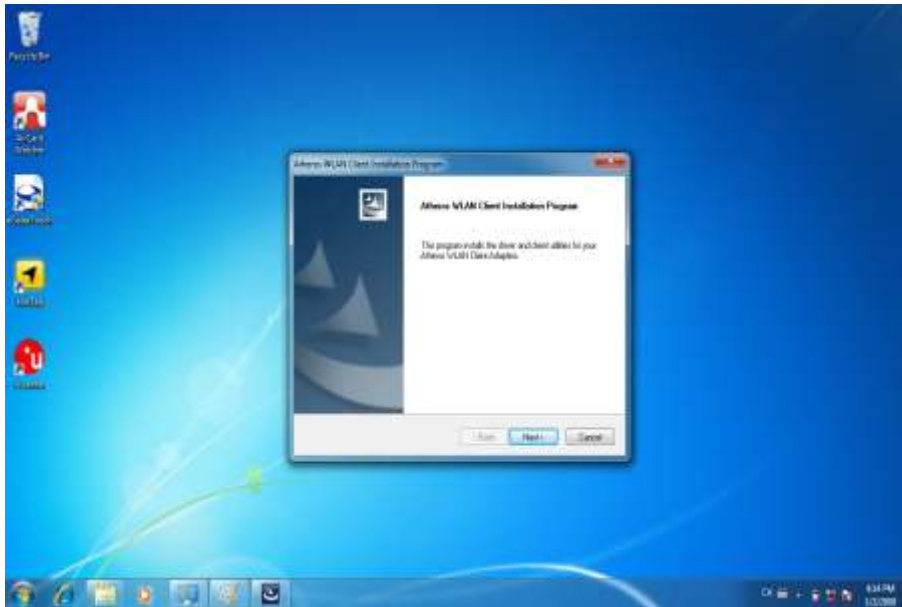


3. Choice Setup Language.



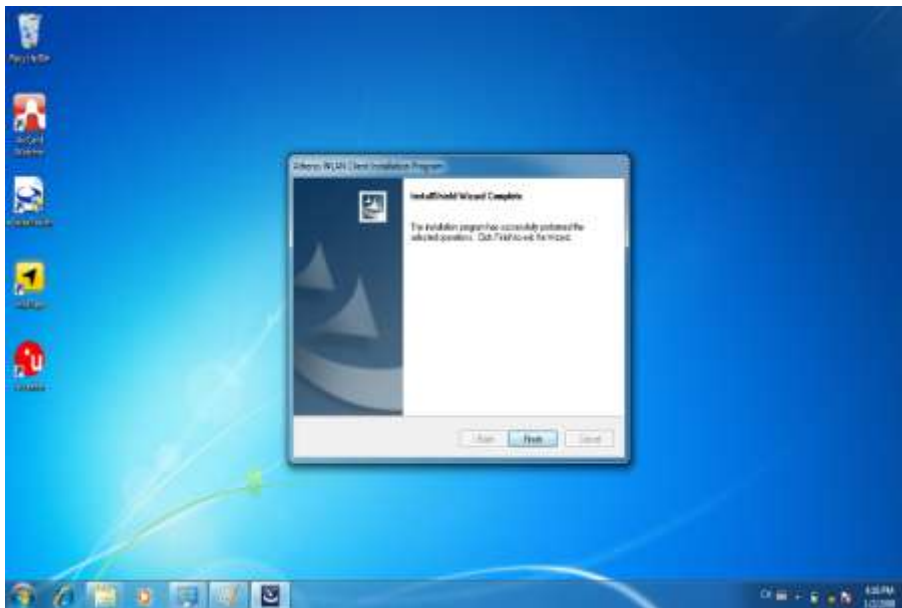


4. Follow the step by step and click “Next” to finish the driver installation.





5. Click "Finish" to complete the installation.

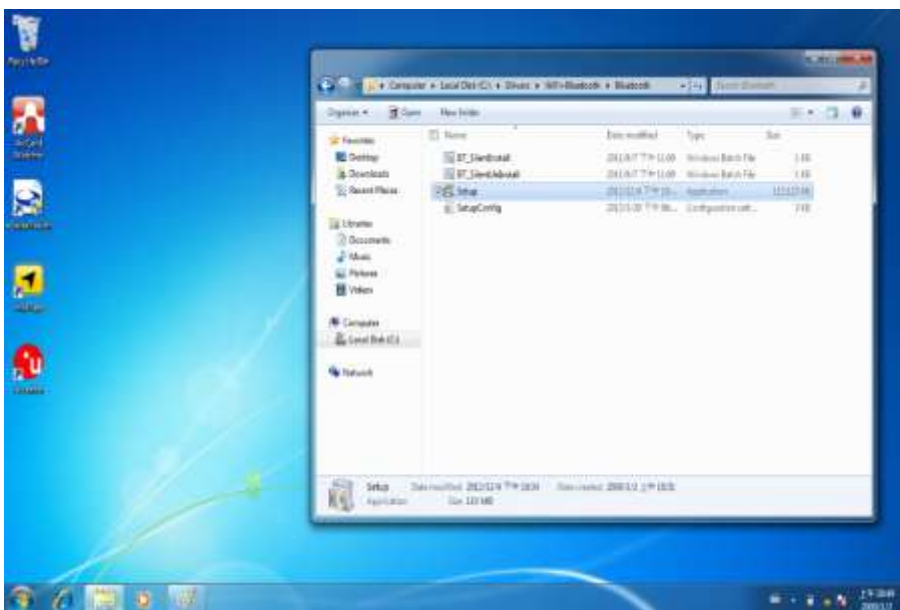
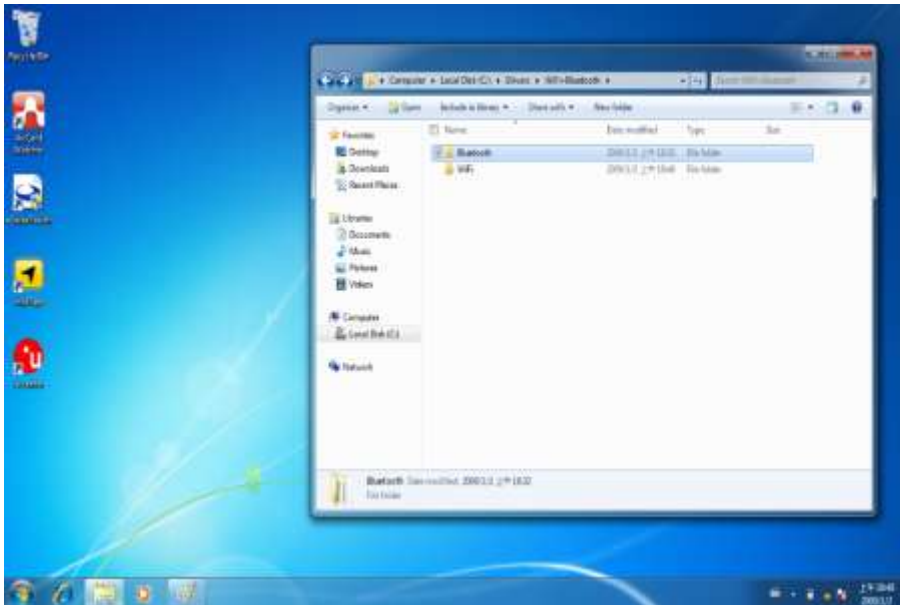




8. Bluetooth Driver Installation.

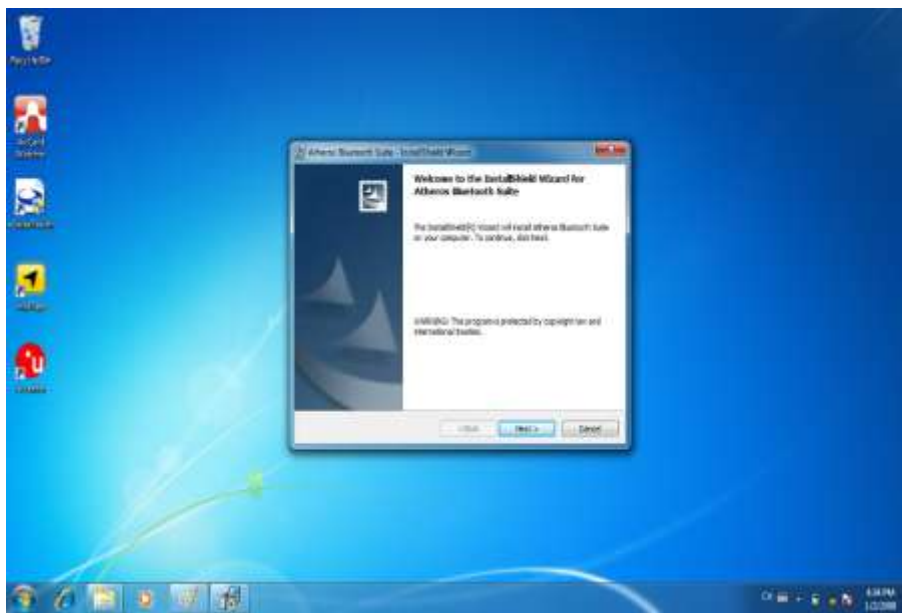
Following the step by step to finish the driver installation

1. Open the file document “Bluetooth” from C:\drivers folder. Press “Setup” to execute the installation program.

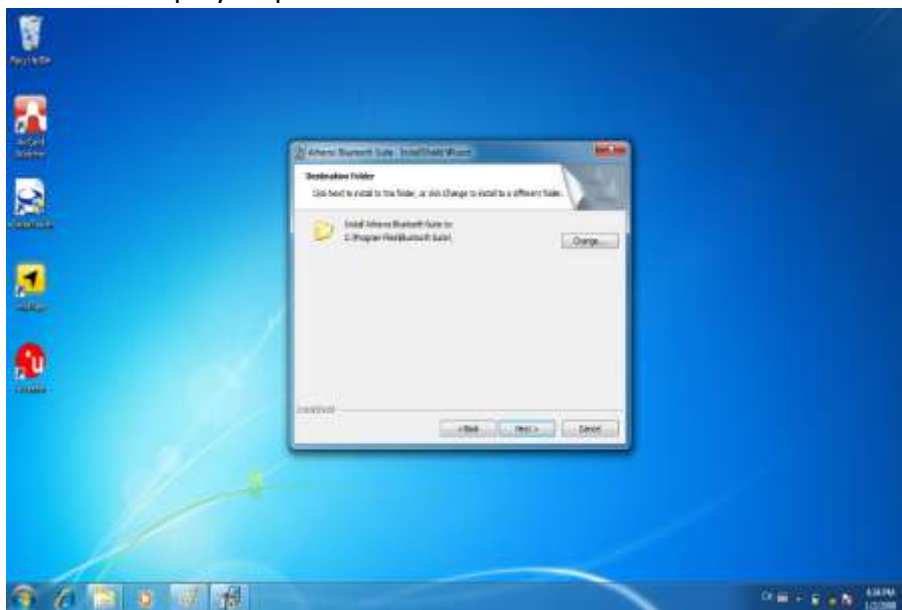


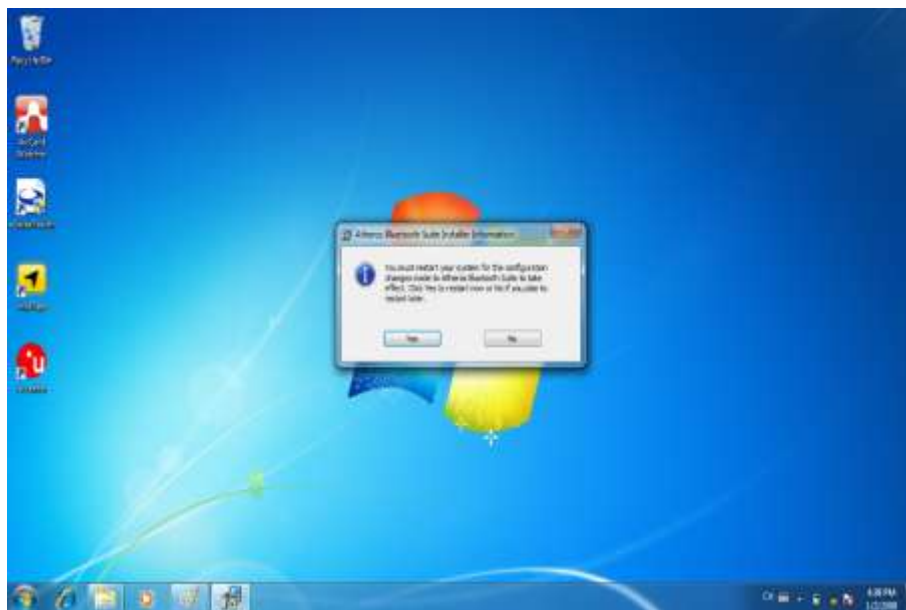
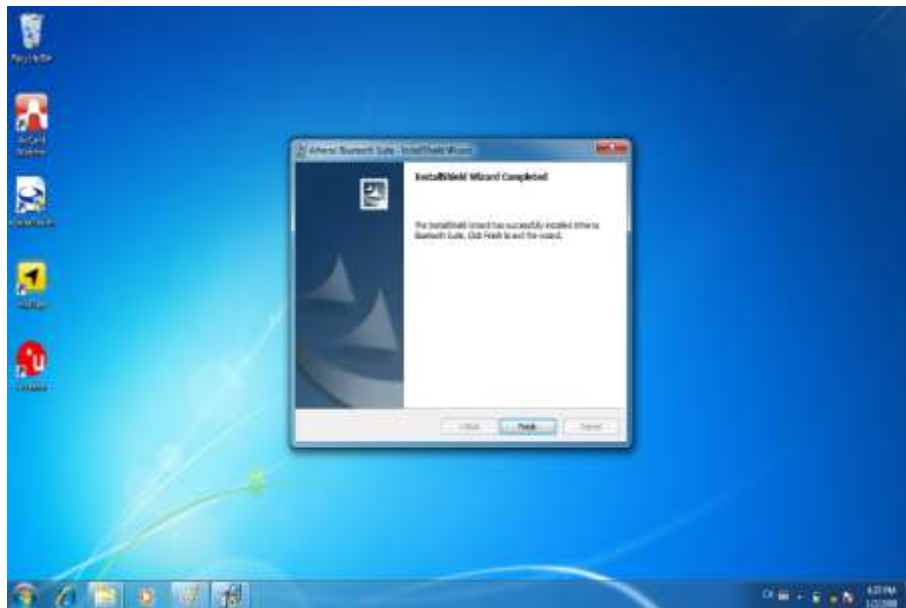


2. Click "Next" to go to installation



3. Follow the step by step and click "Next" to start the driver installation.



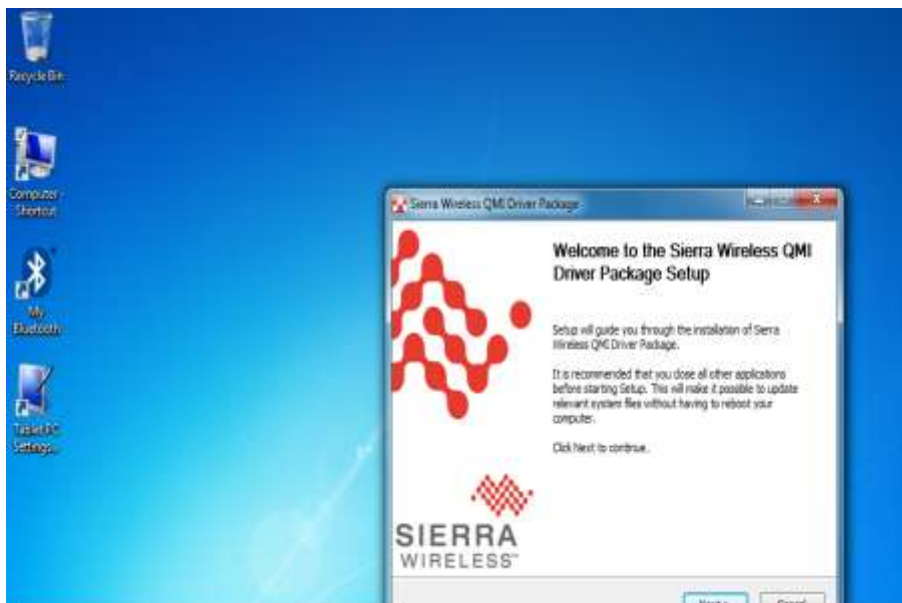
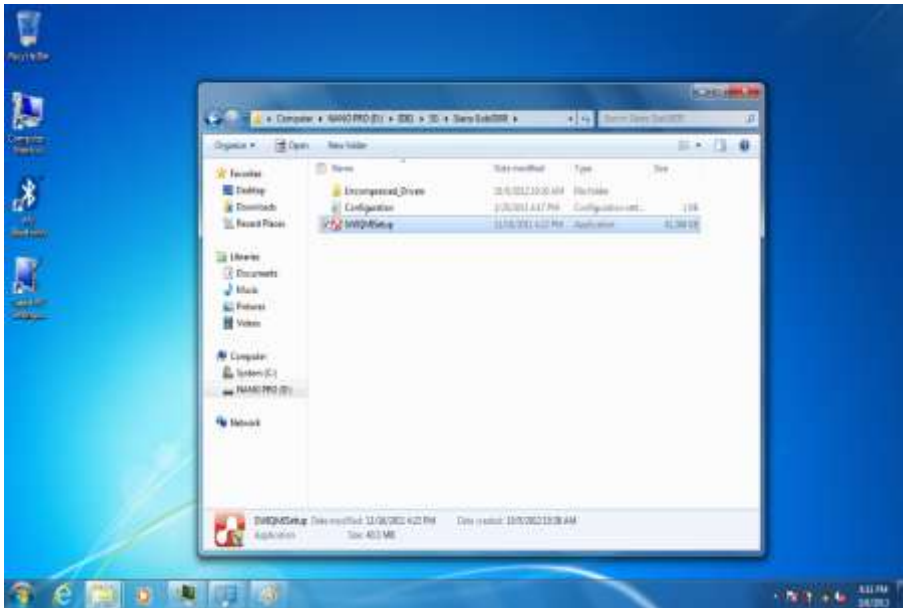




9. 3G Module Driver Installations

Following the step by step to finish the driver installation

1. Open the file document "3G" from C:\drivers folder.
Press "SWIQMISetup.exe" to execute the installation program.





2. Press “Finish” to complete the installation

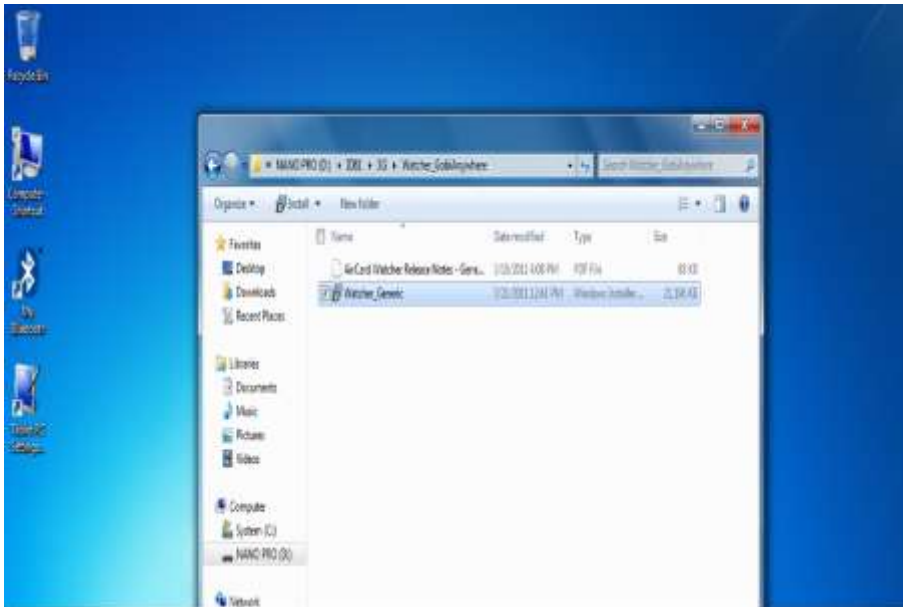




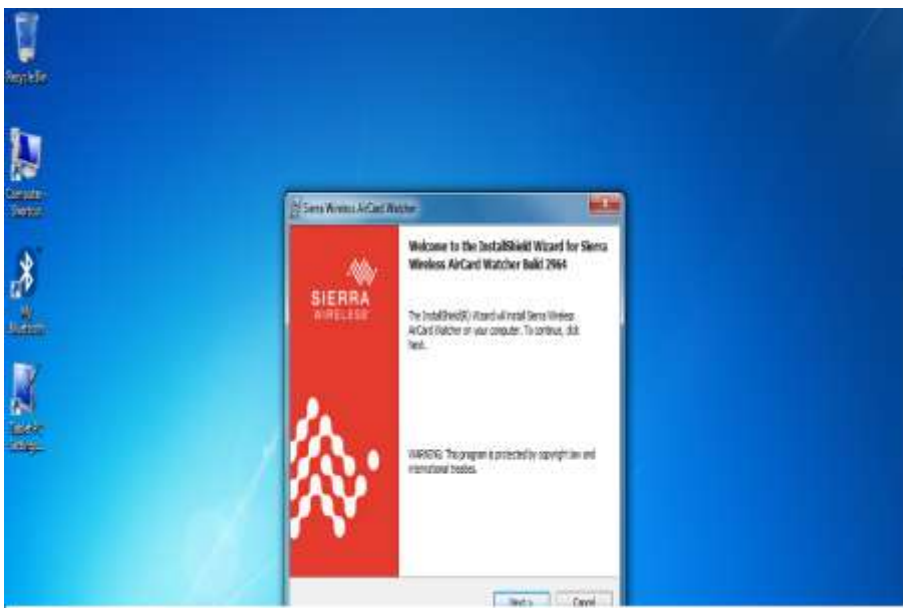
10. AirCard Watcher Installations

Following the step by step to finish the AirCard Watcher installation

1. Open the file document "Watcher_GobiAnywhere" from C:\drivers folder. Press "Watcher_Generic.msi" to execute the installation program.



2. Select the "Next" to next step.





3. Press "Next" to install the driver.



4. Click "Finish" to complete the installation.

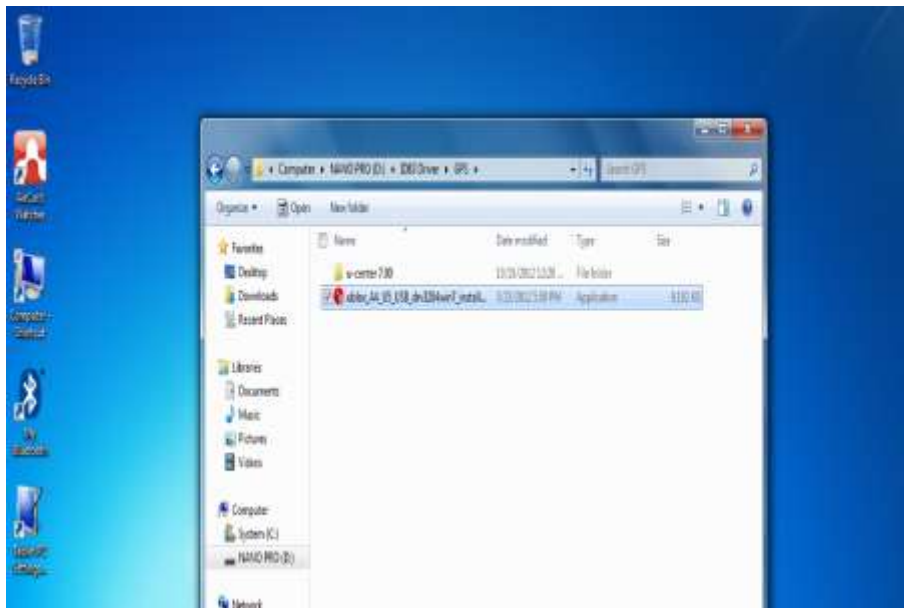




11. GPS Driver Installations

Following the step by step to finish the driver installation

1. Open the file document "GPS". Press "ublox_A4_U5_USB_drv3264win7_install_UI.exe" to execute the installation program.



2. Select the "English" and click the "ok" to next step.



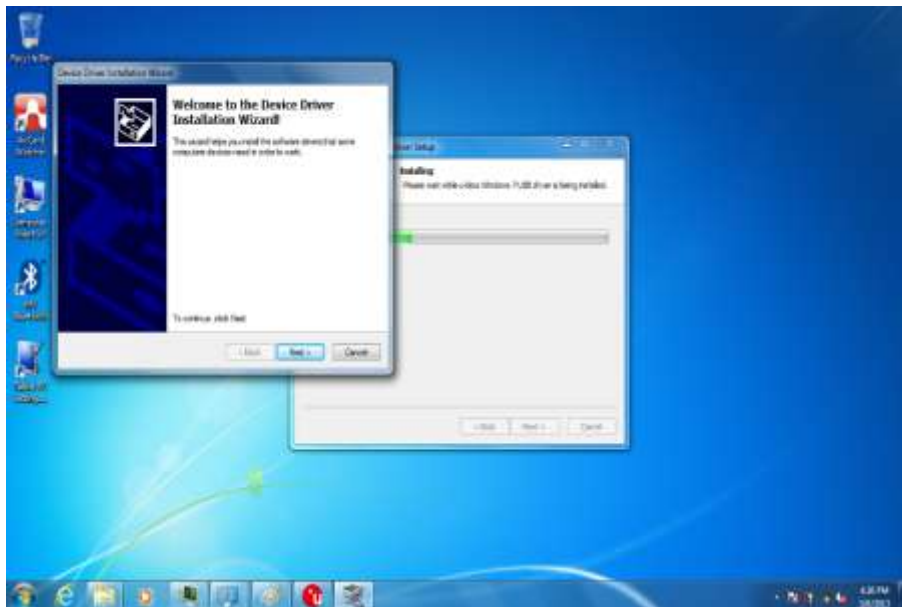
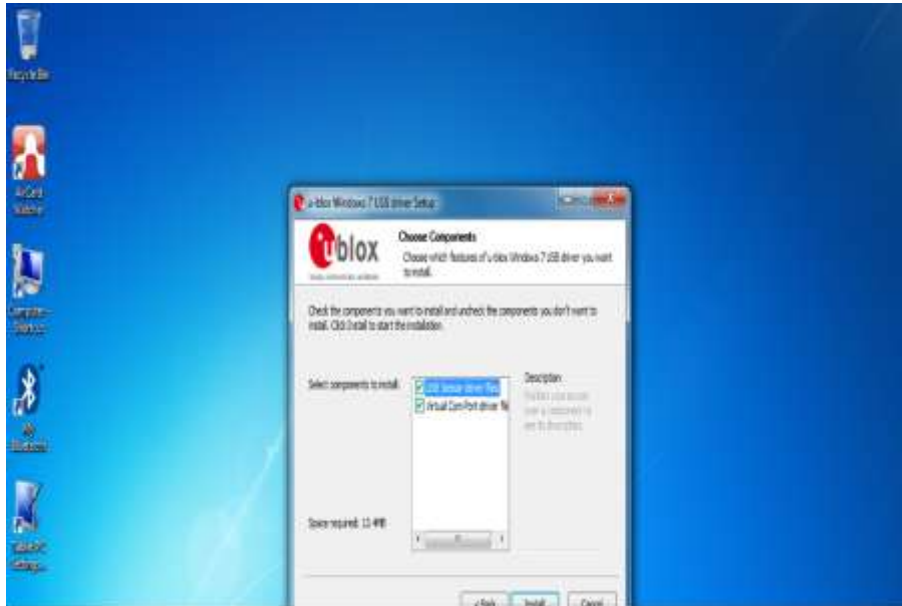


3. Press "Next" to install the driver.



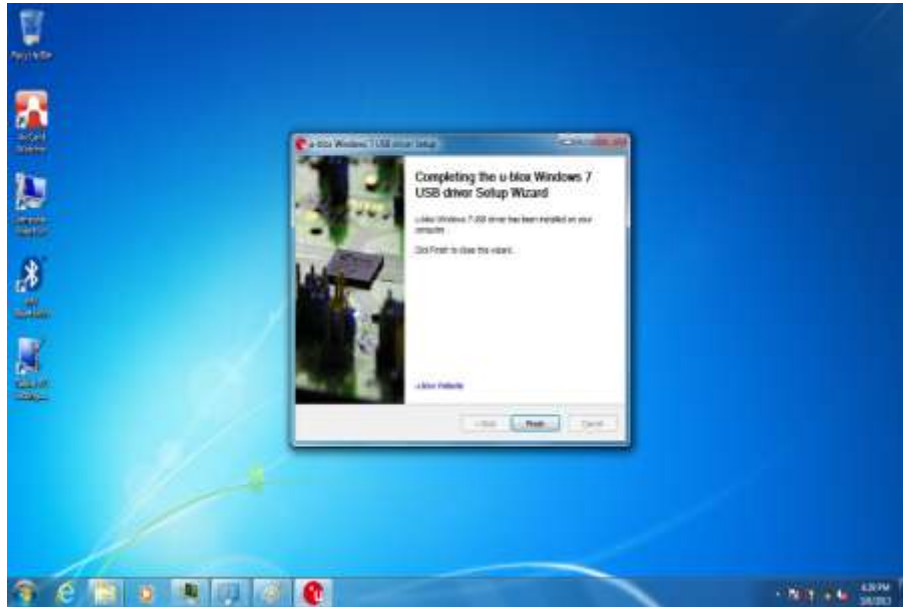
4. Press "I Agree" to install the driver.







5. Click "Finish" to complete the installation.

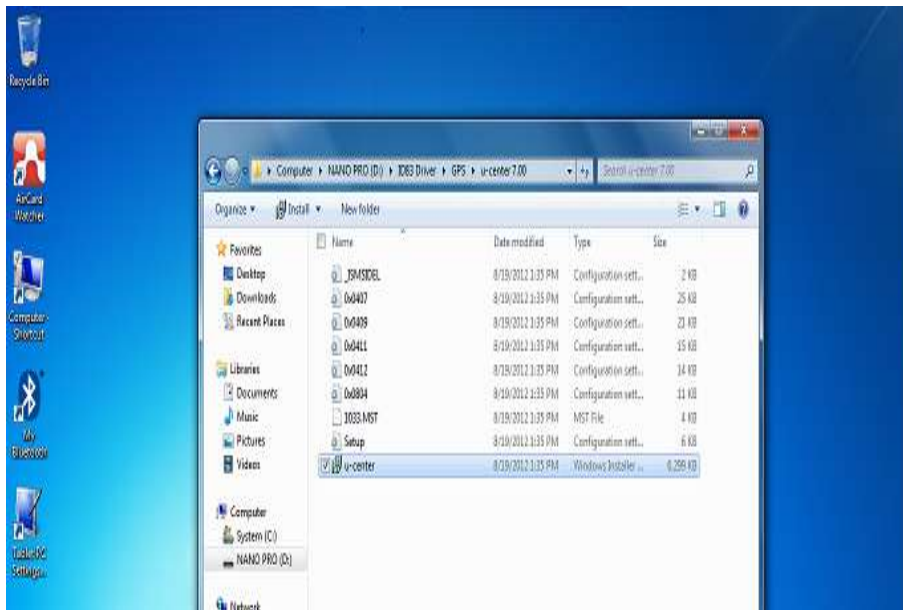




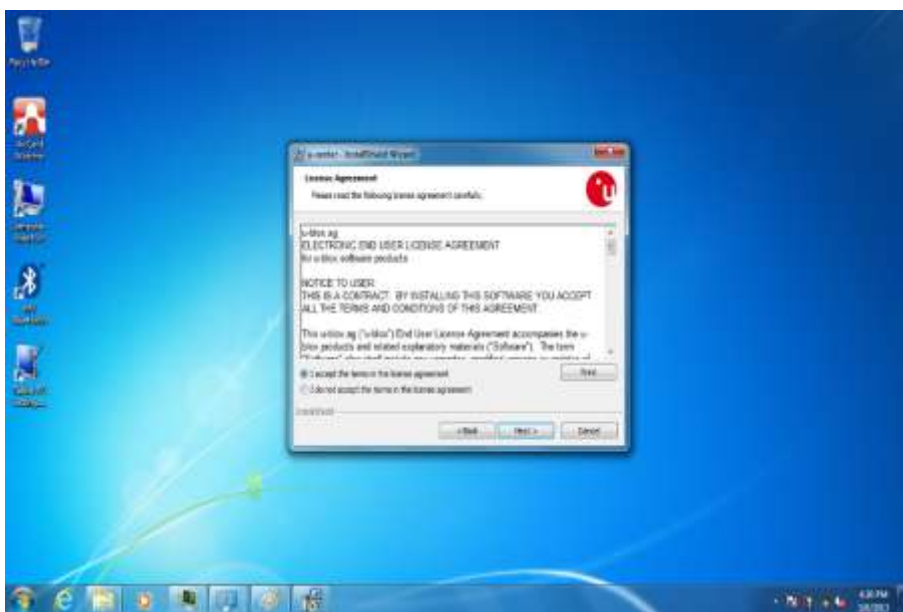
12. U-Center Installations

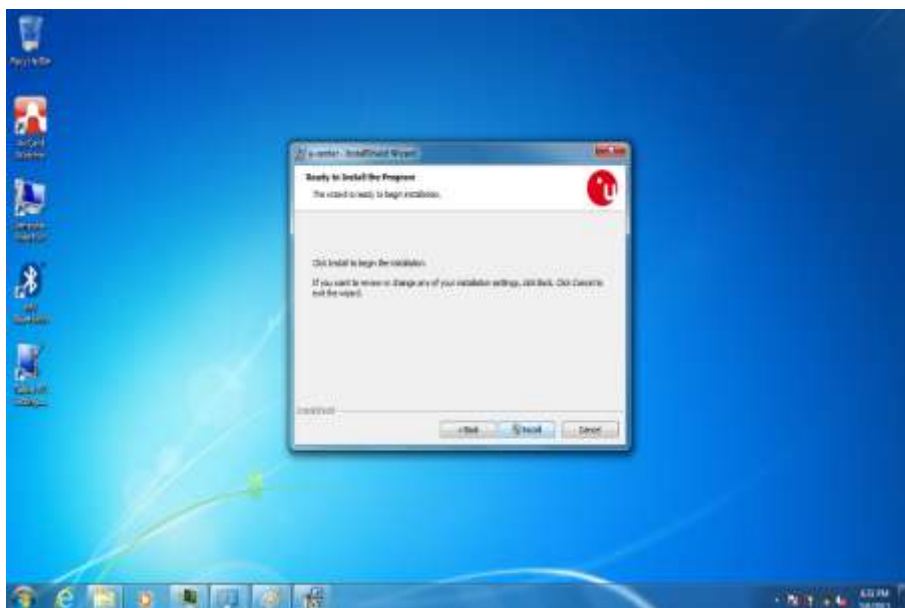
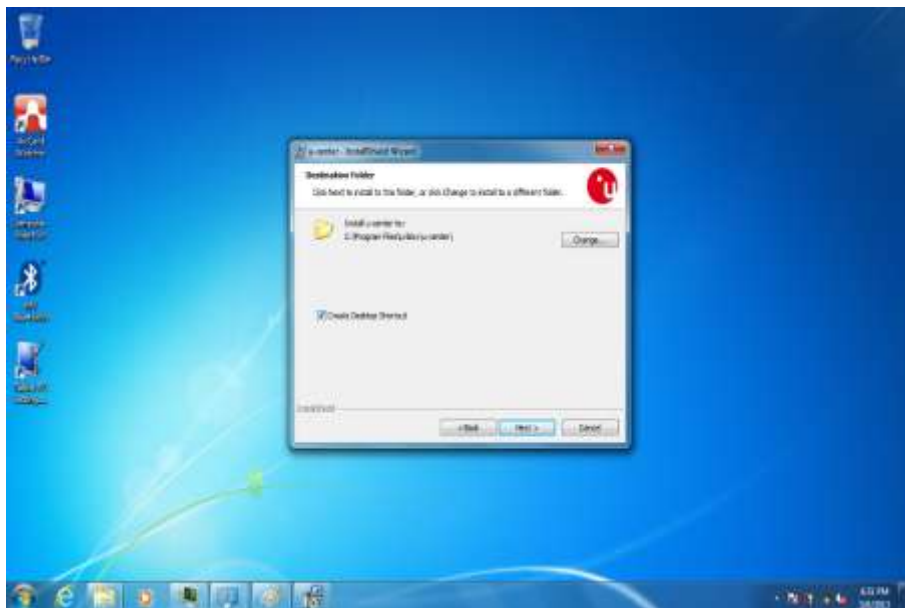
Following the step by step to finish the U-Center installation

1. Open the file document “/GPS/u-center 7.00”. Press “u-center.msi” to execute the installation program.



2. Press “Next’ to install the program.







3. Click "Finish" to complete the installation.





Chapter 6

Caring Your Tablet

PC



1. Battery Protection Tips

- It is recommended temperature range for charging the battery pack between $-5^{\circ}\text{C} \sim 35^{\circ}\text{C}$.
- To avoid harm to the battery, recharge the battery pack when it is nearly discharged. When recharging, make sure that the battery pack is fully charged.
- The battery pack is a consumable product and the following conditions will shorten its life:
 - ◆ Frequently charging the battery pack
 - ◆ When using, charging, or storing the battery in high temperature condition
- To avoid hastening the deterioration of the battery pack thereby prolonging its useful life, minimize the number of times you charge it so as not to frequently increase its internal temperature.
- A higher environment temperature will cause the battery pack's temperature to rise. Avoid charging the battery pack inside a closed vehicle and in hot weather condition. Also, charging will not start if the battery pack is not within the allowed temperature range.
- It is recommended that you do not charge the battery pack more than once a day.
- Charging the battery pack with the system's power off is recommended.
- To maintain the battery pack's operating efficiency, store it in a cool dark place removed from the Tablet PC and with 30 % ~ 40 % charge remaining.
- Avoid installing or removing the battery pack when the Tablet PC is in Standby mode.
- Charging time will be prolonged when the Tablet PC is turned on.



2. Touch screen Protection Tips

- Avoid using excessive force to the display, when use the finger or the included touch screen stylus pen on the display, **the recommended force can not over 200gf.**
- Besides the included stylus, using a sharp or metallic object may cause scratches and damage the display, thereby causing errors.
- Wipe the touch screen with a clean, soft, lint-free cloth.
- Using the touch screen during low temperature (less than 5 °C) may cause a slower response time, this is normal. A normal response time may be restored upon returning to room temperature.
- When there is noticeable discrepancy in the operation of the touch screen function (wrong location on intended operation or improper display resolution), refer to the Windows operating system for instructions on recalibrating the touch screen display.



3. Trouble shooting from A to L

A. Battery Problem

Condition	Check Point
The battery does not charge (Battery Charge indicator does not light orange).	<ul style="list-style-type: none"> ● Make sure that the AC adapter is properly connected. ● Make sure that the battery is not too hot or cold. Allow time for the battery pack to return to room temperature. ● Make sure that the battery pack is installed correctly. ● Make sure that the battery terminals are clean.

B. Bluetooth Transmission Problem

Condition	Check Point
I cannot connect to another device with Bluetooth wireless technology.	<ul style="list-style-type: none"> ● Make sure that both devices have activated Bluetooth feature. ● Make sure that the distance between the two devices are not over 10 meters or that there are no walls or other obstructions between the devices. ● Make sure that the other device is not in "Hidden" mode. ● Make sure that both devices are compatible.

C. Display Problem

Condition	Check Point
Nothing appears on the screen.	<ul style="list-style-type: none"> ● During operation, the screen may automatically turn off as a result of power management. Press any key to see if the screen comes back. ● The brightness level might be too low. Increase brightness by pressing the button.

D. Date/Time Problems

Condition	Check Point
The date/time is incorrect.	<p>Correct the date and time via the operating system or BIOS Setup program.</p> <p>After you have performed everything as described above and still have the incorrect date and time every</p>



	time you turn on the tablet PC, the RTC (Real-Time Clock) battery is at the end of its life. Call an authorized dealer to replace the RTC battery.
--	----------------------------------------------------------------------------------------------------------------------------------------------------

E. SSD Problem

Condition	Check Point
The SSD error message appears on the screen.	<ul style="list-style-type: none"> ● The SSD has defects. Ask your dealer for help.
The SSD operations seem slow.	<ul style="list-style-type: none"> ● The data files stored on the SSD may be fragmented. Use a tool such as Window's Disk Defragmenter to defragment the files.
The SSD indicator glows without blinking.	<ul style="list-style-type: none"> ● The data files stored on the SSD may be fragmented. Use a tool such as Window's Disk Defragmenter to defragment the files.



F. LAN Problem

Condition	Check Point
I cannot access the network.	<ul style="list-style-type: none"> ● Make sure that the LAN cable is properly connected to the RJ-45 connector and the network hub. ● Make sure that the network configuration is appropriate. ● Make sure that the user name or password is correct.

G. Power Management Problems

Condition	Check Point
The Tablet PC does not enter Standby or Hibernation mode automatically.	<ul style="list-style-type: none"> ● If you have a connection to another computer, the Tablet PC does not enter Standby or Hibernation mode if the connection is actively in use. ● Make sure that the Standby or Hibernation time-out is enabled.
The Tablet PC does not enter Standby or Hibernation mode immediately.	<ul style="list-style-type: none"> ● If the Tablet PC is performing an operation, it normally waits for the operation to finish.
The Tablet PC does not resume from Standby or Hibernation mode.	<ul style="list-style-type: none"> ● The Tablet PC automatically enters Standby or Hibernation mode when the battery pack is empty. ● Do any one of the following: <ul style="list-style-type: none"> - Connect the AC adapter to the Tablet PC. - Replace the empty battery pack with a fully charged one.

H. Startup Problems

Condition	Check Point
When you turn on the Tablet PC, it does not respond and the Power indicator does not light green.	<ul style="list-style-type: none"> ● If you are using an external AC power, make sure that the AC adapter is correctly and securely connected. If so, make sure that the electrical outlet works properly. ● If you are using the battery power, make sure that the battery is not discharged. ● Wait awhile.



When you turn on the Tablet PC, it stops after POST.	<ul style="list-style-type: none"> ● Restart your Tablet PC.
------------------------------------------------------	-----------------------------------------------------------------------------

I. Sound Problems

Condition	Check Point
No sound is produced.	<ul style="list-style-type: none"> ● Make sure that the volume control is not set too low. Increase volume by pressing the button. ● Make sure that the Tablet PC is not in Standby mode. ● If using an external speaker, make sure that the speaker is properly connected.
Distorted sound is produced.	<ul style="list-style-type: none"> ● Make sure that the volume control is not set too high or too low. In most cases, a high setting can cause the audio electronics to distort the sound.
The external audio device does not work.	<ul style="list-style-type: none"> ● Make sure that your Tablet PC is equipped with the driver needed. ● Click the speaker symbol on the taskbar and check the Windows volume control. ● Check the volume control of your tablet PC.



J. Wireless LAN Problem

Condition	Check Point
I cannot use the wireless LAN feature.	<ul style="list-style-type: none"> ● Make sure that the wireless LAN feature is turned on.
Transmission quality is poor.	<ul style="list-style-type: none"> ● Your Tablet PC may be in an out-of-range situation. Move your Tablet PC closer to the Access Point or another wireless LAN device it is associated with. ● Check if there is high interference around the environment and solve the problem as described next.
Radio interference exists.	<ul style="list-style-type: none"> ● Move your Tablet PC away from the device causing the radio interference such as microwave oven and large metal objects. ● Plug your Tablet PC into an outlet on a different branch circuit from that used by the affecting device. ● Consult your dealer or an experienced radio technician for help.
I cannot connect to another wireless LAN device.	<ul style="list-style-type: none"> ● Make sure that the wireless LAN feature is turned on. ● Make sure that the SSID setting is the same for every wireless LAN device in the network. ● Your Tablet PC is not recognizing changes. Restart the Tablet PC. ● Make sure that the IP address or subnet mask setting is correct.
I cannot communicate with the computer in the network when Infrastructure mode is configured.	<ul style="list-style-type: none"> ● Make sure that the Access Point your Tablet PC is associated with is powered on and all the LEDs are working properly. ● If the operating radio channel is in poor quality, change the Access Point and all the wireless station(s) within the BSSID to another radio channel. ● Your Tablet PC may be in an out-of-range situation. Move your Tablet PC closer to the Access Point it is associated with. ● Make sure that your Tablet PC is configured with the same security option (encryption) to the Access Point. ● Use the Web Manager/Telnet of the Access Point to check whether it is connected to the network.



	<ul style="list-style-type: none">● Reconfigure and reset the Access Point.
I cannot access the network.	<ul style="list-style-type: none">● Make sure that the network configuration is appropriate.● Make sure that the user name or password is correct.● You have moved out of range of the network.● Turn off power management.



4. Appendix

A.COM PORT Define

